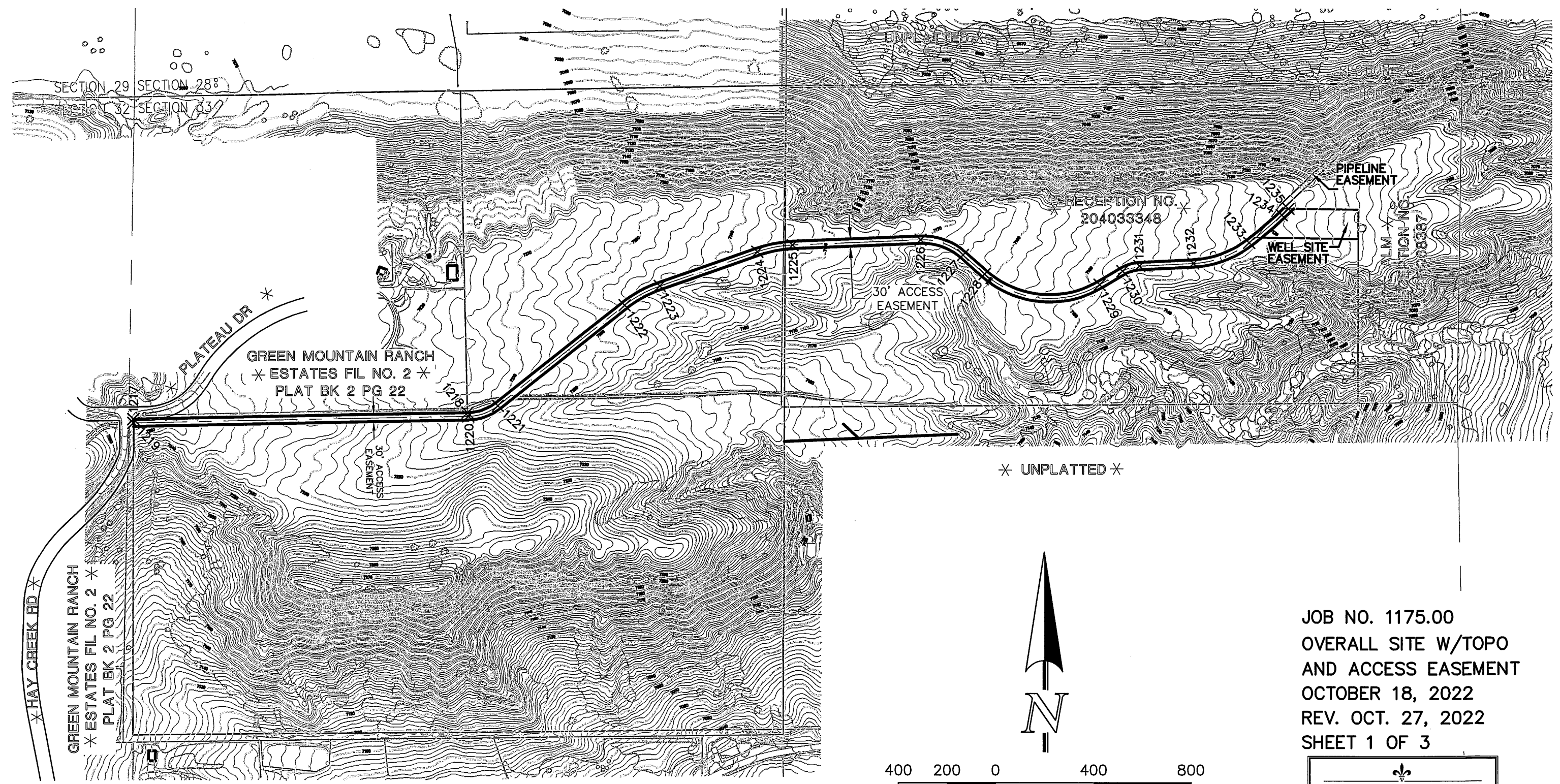
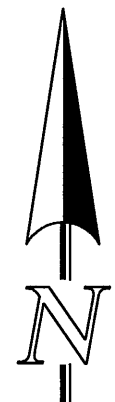


\\117500\DRAWINGS\SURVEY\EXHIBITS\WELL AND ACCESS 22-10-27.dwg 10/27/2022 8:47:19 AM Suite110B W.p.3 1-1



* UNPLATTED *



SCALE: 1" = 400'
U.S. SURVEY FOOT

JOB NO. 1175.00
OVERALL SITE W/TOPO
AND ACCESS EASEMENT
OCTOBER 18, 2022
REV. OCT. 27, 2022
SHEET 1 OF 3



619 N. Cascade Avenue, Suite 200
Colorado Springs, Colorado 80903

(719)785-0790
(719)785-0799 (Fax)

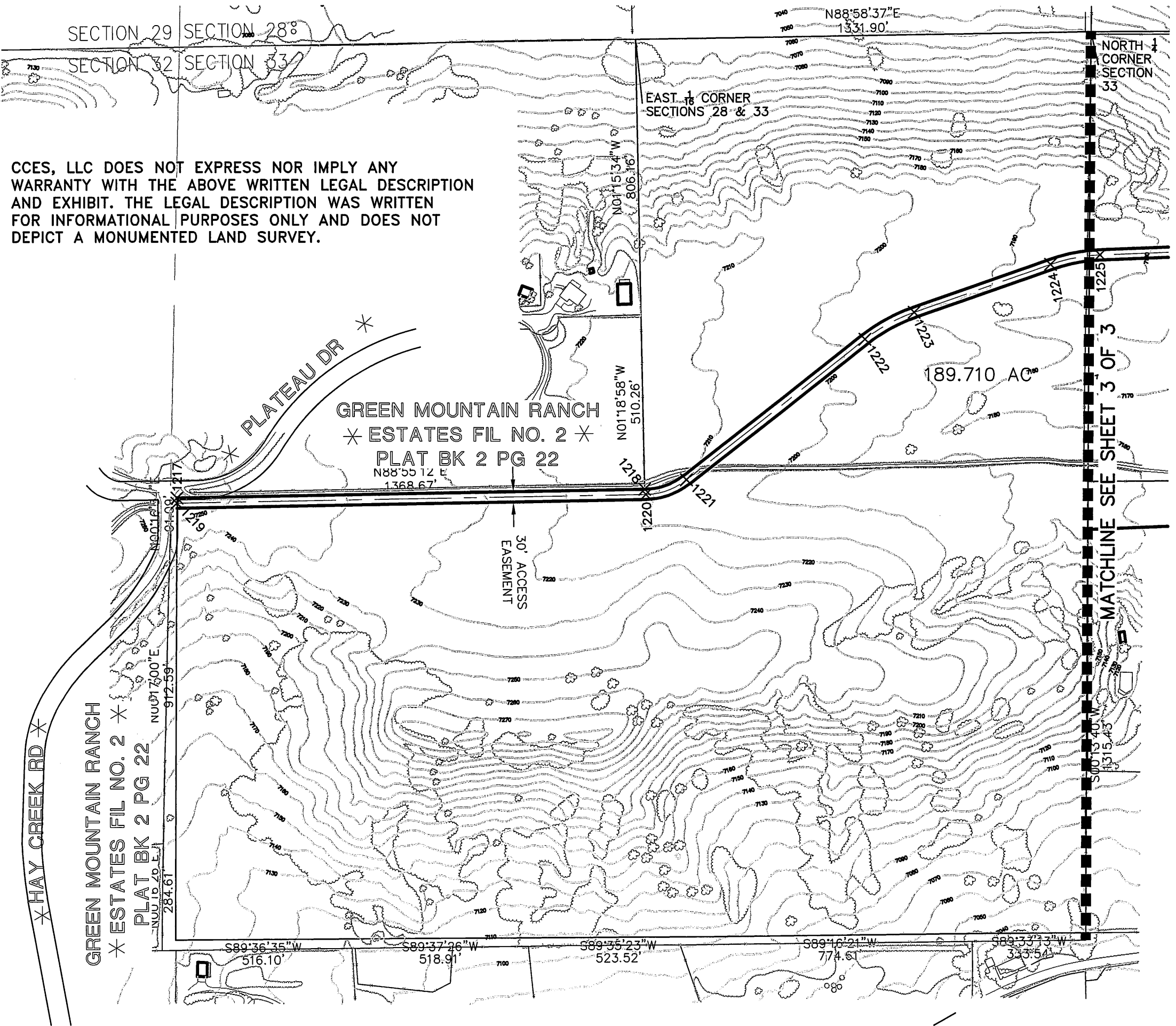
CCES, LLC DOES NOT EXPRESS NOR IMPLY ANY WARRANTY WITH THE ABOVE WRITTEN LEGAL DESCRIPTION AND EXHIBIT. THE LEGAL DESCRIPTION WAS WRITTEN FOR INFORMATIONAL PURPOSES ONLY AND DOES NOT DEPICT A MONUMENTED LAND SURVEY.

N:\117500\DRAWINGS\SURVEY\EXHIBITS\MELL AND ACCESS 22-10-27.dwg 10/27/2022 8:48:58 AM \\svr-ces-fpbce01\Suite110B.W 1-1

SECTION 29 SECTION 28

SECTION 32 SECTION 33

CCES, LLC DOES NOT EXPRESS NOR IMPLY ANY WARRANTY WITH THE ABOVE WRITTEN LEGAL DESCRIPTION AND EXHIBIT. THE LEGAL DESCRIPTION WAS WRITTEN FOR INFORMATIONAL PURPOSES ONLY AND DOES NOT DEPICT A MONUMENTED LAND SURVEY.



EAST 1/4 CORNER SECTIONS 28 & 33

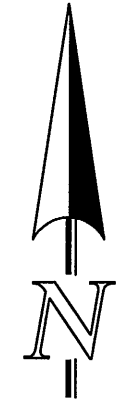
NORTH 1/4 CORNER SECTION 33

GREEN MOUNTAIN RANCH
* ESTATES FIL NO. 2 *
PLAT BK 2 PG 22
N88°55'12"E
1368.67'

189.710 AC[±]

30' ACCESS EASEMENT

MATCHLINE SEE SHEET 3 OF 3



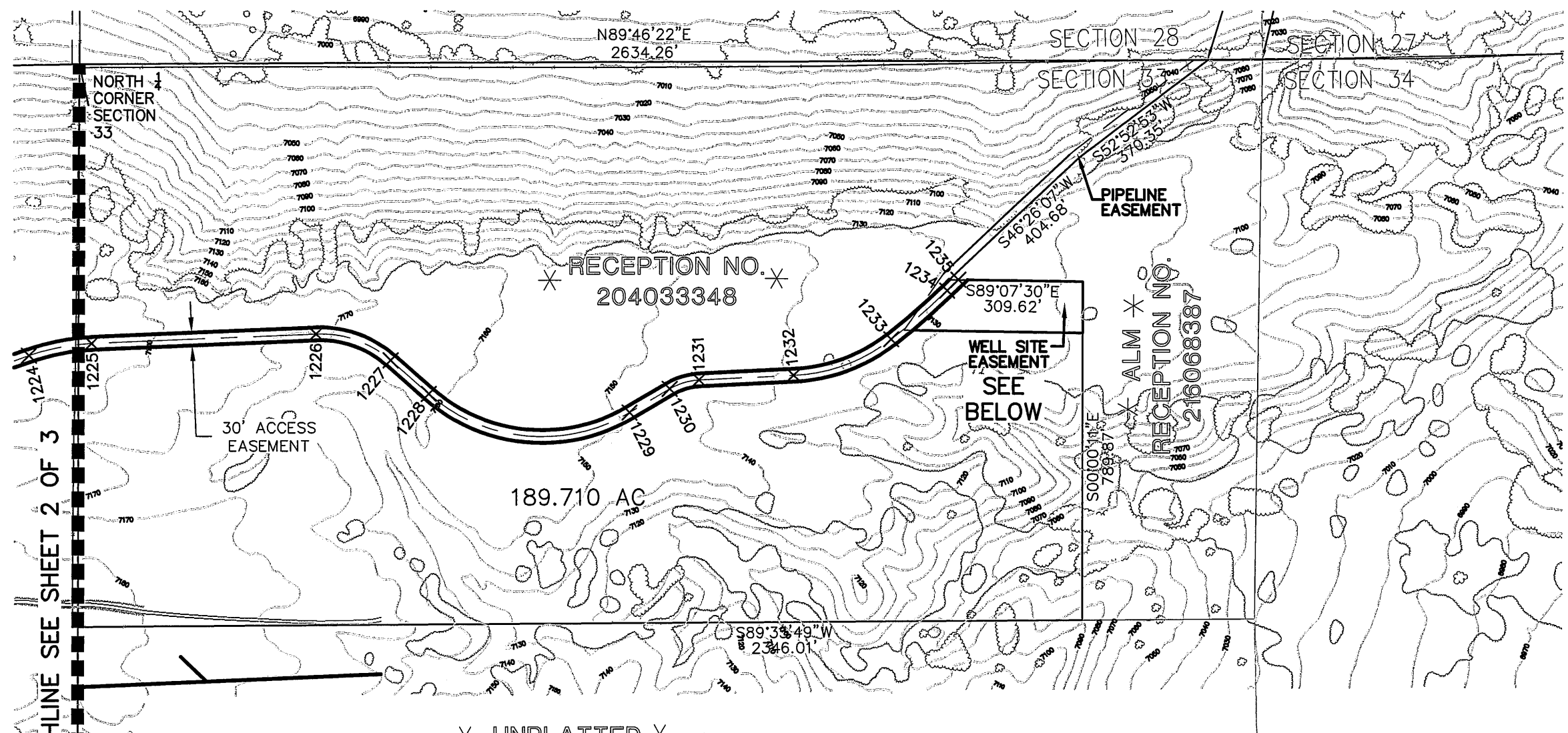
SCALE: 1" = 300'
U.S. SURVEY FOOT
JOB NO. 1175.00
ACCESS EASEMENT WEST HALF
OCTOBER 12, 2022
REV. OCT. 27, 2022
SHEET 2 OF 3



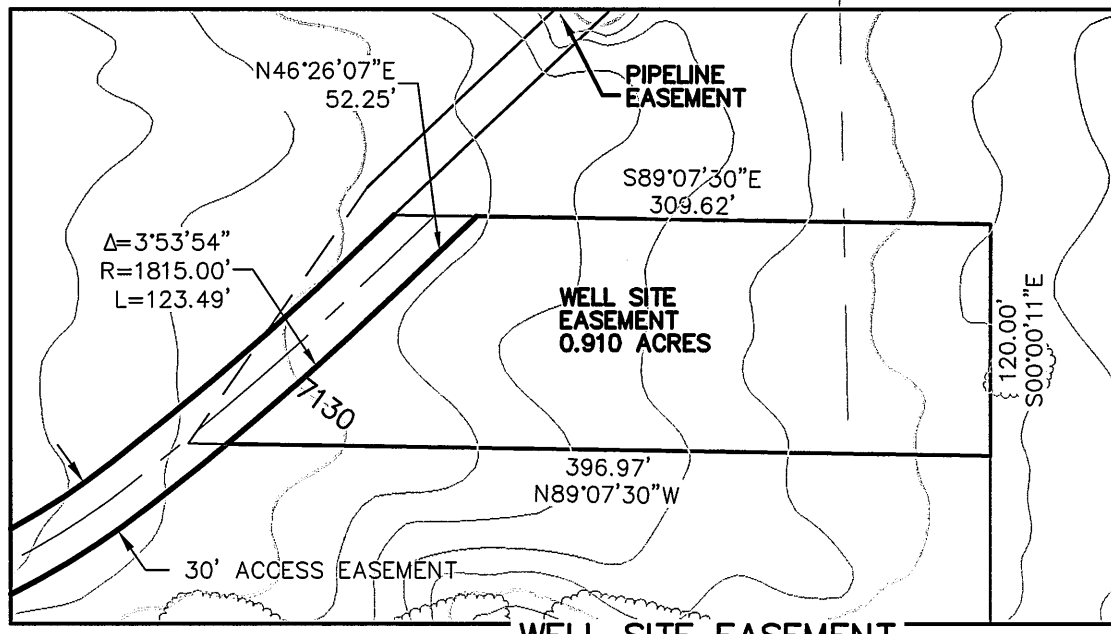
619 N. Cascade Avenue, Suite 200
Colorado Springs, Colorado 80903

(719)785-0790
(719)785-0799 (Fax)

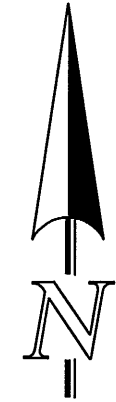
N:\117500\DRAWINGS\SURVEY\EXHIBITS\WELL AND ACCESS 22-10-27.dwg 10/27/2022 8:49:51 AM \\svr-ces-fpbnc01\cshita10r_w_1-1



* UNPLATTED *



WELL SITE EASEMENT
1"=100'



SCALE: 1" = 300'
U.S. SURVEY FOOT

JOB NO. 1175.00
ACCESS EASEMENT EAST HALF
OCTOBER 12, 2022
REV. OCT. 27, 2022
SHEET 3 OF 3



CCES, LLC DOES NOT EXPRESS NOR IMPLY ANY WARRANTY WITH THE ABOVE WRITTEN LEGAL DESCRIPTION AND EXHIBIT. THE LEGAL DESCRIPTION WAS WRITTEN FOR INFORMATIONAL PURPOSES ONLY AND DOES NOT DEPICT A MONUMENTED LAND SURVEY.

619 N. Cascade Avenue, Suite 200
Colorado Springs, Colorado 80903

(719)785-0790
(719)785-0799 (Fax)