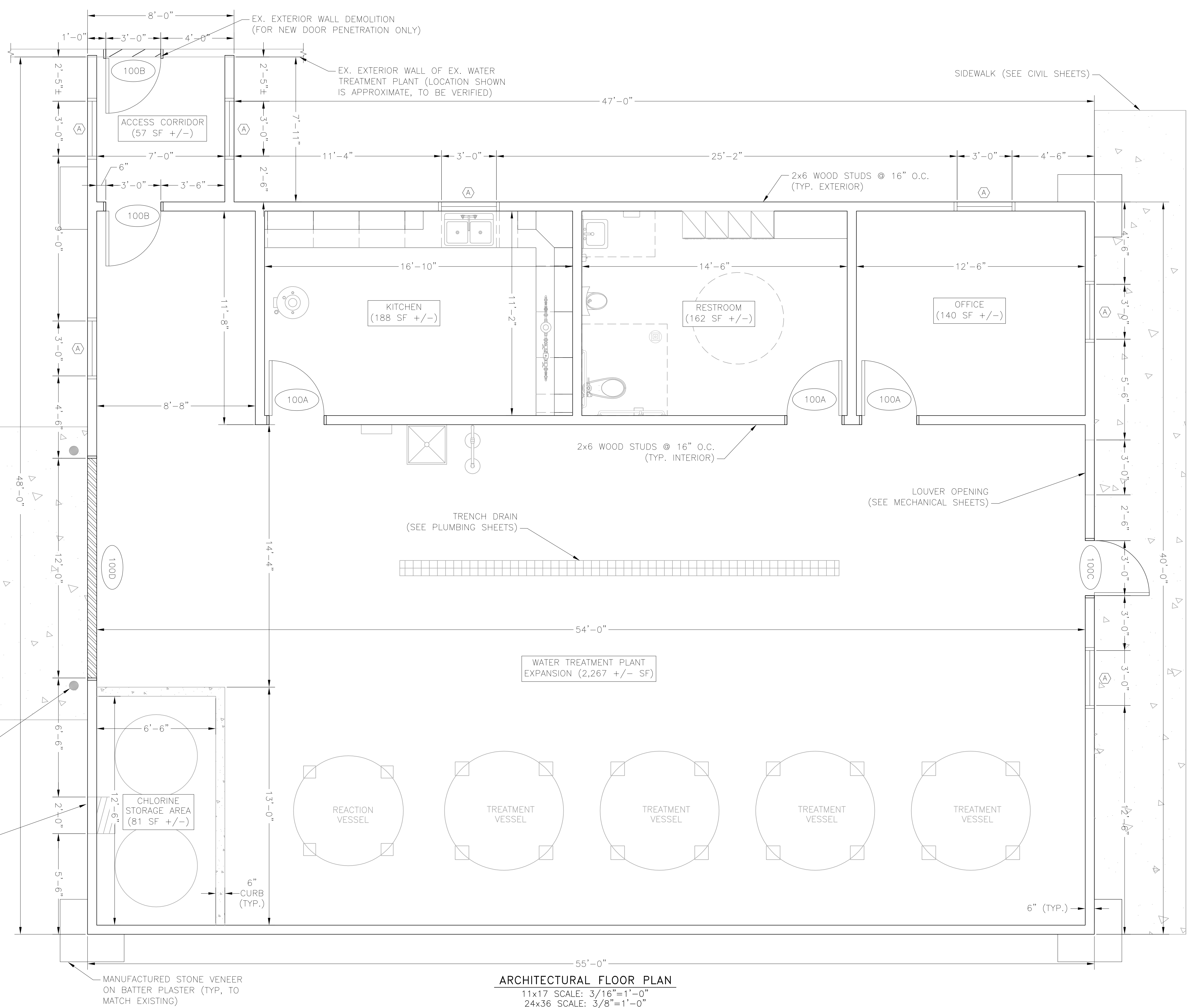


- NOTES:
- OWNER TO SELECT PAINT COLOR FOR ALL PAINTED SURFACES, INCLUDING DOORS, TRIM, INTERIOR AND EXTERIOR MATERIALS. SEE SPECIFICATIONS FOR FINISHES.
 - EXPOSED CONCRETE SURFACES SHALL BE COATED WITH WATERPROOFING PER SPECIFICATIONS.
 - FINISHED FLOOR ELEVATION VARIES. SEE STRUCTURAL FLOOR PLAN.
 - SEE SHEET A5 FOR DOOR/WINDOW SCHEDULE.

16'-0"x10'-0" CONCRETE LANDING

BOLLARD (TYP.)
SEE SHEET A6

EXHAUST FAN OPENING
(SEE MECHANICAL SHEETS)



WATER TREATMENT PLANT
EXPANSION (2,267 +/- SF)

ARCHITECTURAL FLOOR PLAN
11x17 SCALE: 3/16"=1'-0"
24x36 SCALE: 3/8"=1'-0"

NOTE: TBD BY EPC

PCD File No. PPR-21-

JDS-HYDRO
CONSULTANTS, INC.
5540 TECH CENTER DR., SUITE 100
COLORADO SPRINGS, COLORADO 80919
(719) 227-0072

MERIDIAN SERVICE METROPOLITAN DISTRICT
WATER TREATMENT PLANT EXPANSION
ARCHITECTURAL FLOOR PLAN

NO.	DESCRIPTION	BY	APP.	DATE
1				
2				
3				
4				
5				
6				
7				

FOR REVIEW

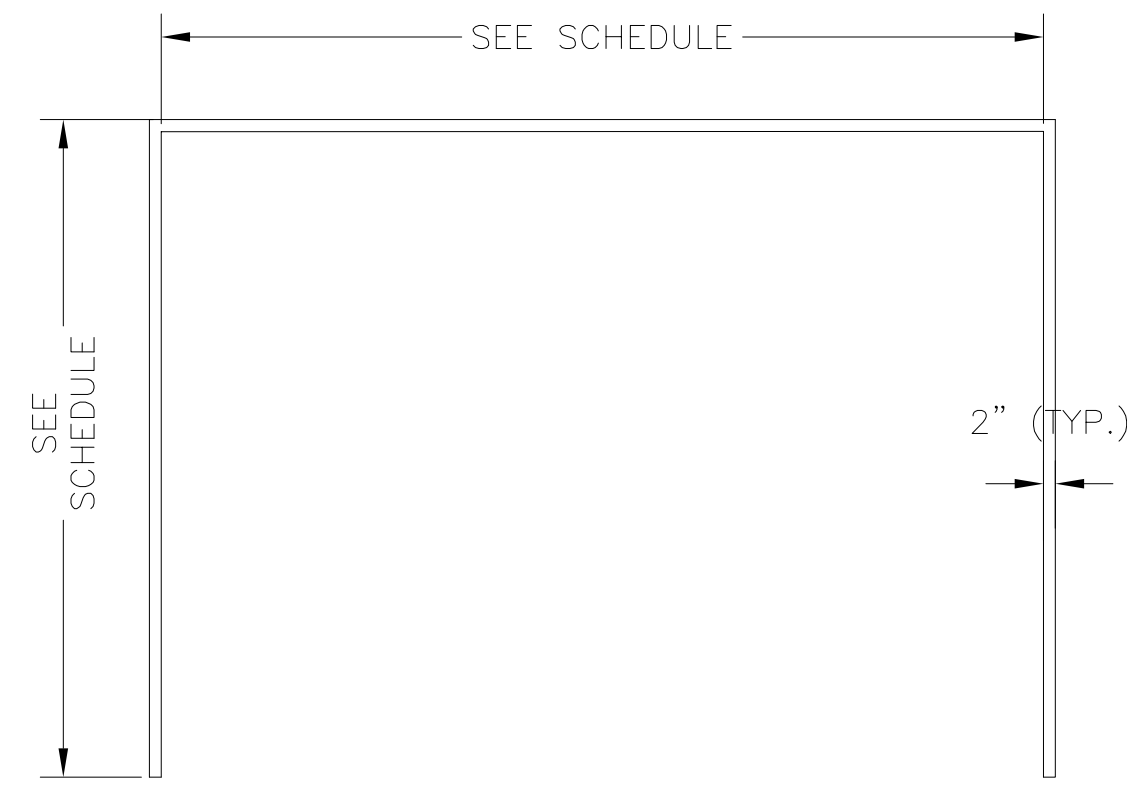
Project No.: 151.52
Date: 02/23/22
Design: RMM
Drawn: SKG
Check: RMM

A1
SHEET OF

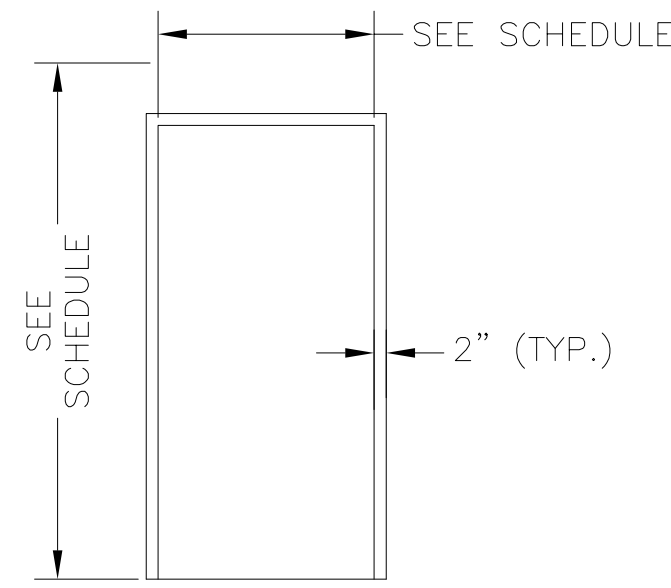
2022/02/23 10:36 AM By: Shelby Galfin N:\Projects\151_Meridian Service Metropolitan District\151.52_WTP_Expansion_SBP\Drawings\Working\151.52_3_Architectural.dwg

UNLESS THE CONTRACTOR SHALL VERIFY ALL DIMENSIONS, ANY ERRORS OR OMISSIONS SHALL BE REPORTED TO JDS-HYDRO CONSULTANTS, INC. JDS-HYDRO ASSUMES NO LIABILITY FOR UNAUTHORIZED CHANGES AND/OR REVISIONS MADE TO PLANS.

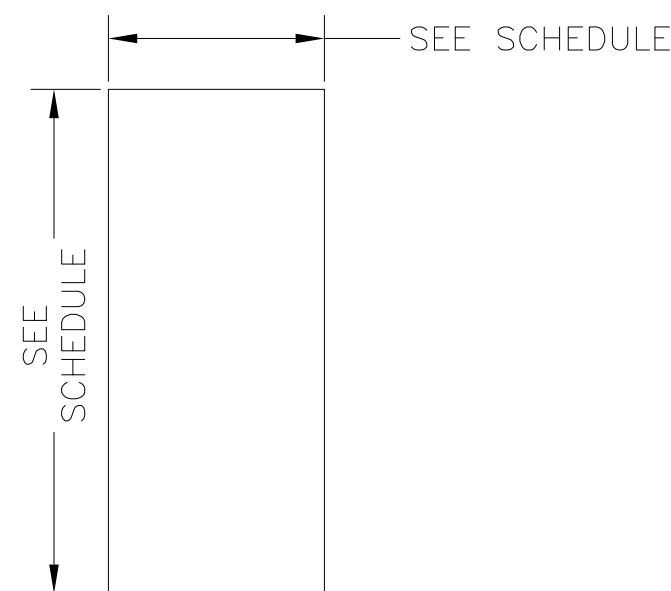
2022/02/23 10:36 AM By: Shelby, Catlin N:\Projects\151 Meridian Service Metropolitan District\151.52 WTP Expansion_SBP\Drawings\Working\151.52_3_Architectural.dwg



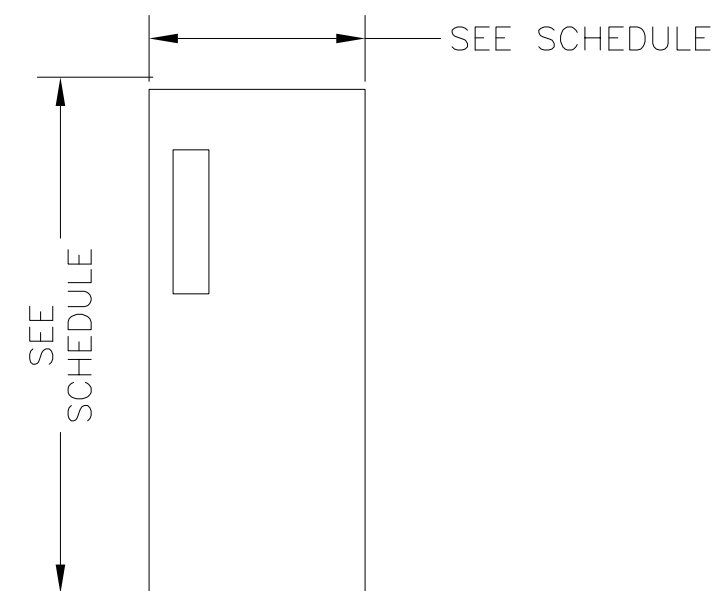
DOOR FRAME 1
MC8 STEEL CHANNEL FRAME W/ FIELD-WELDED CORNERS - SHOP PRIME FOR FIELD PAINT



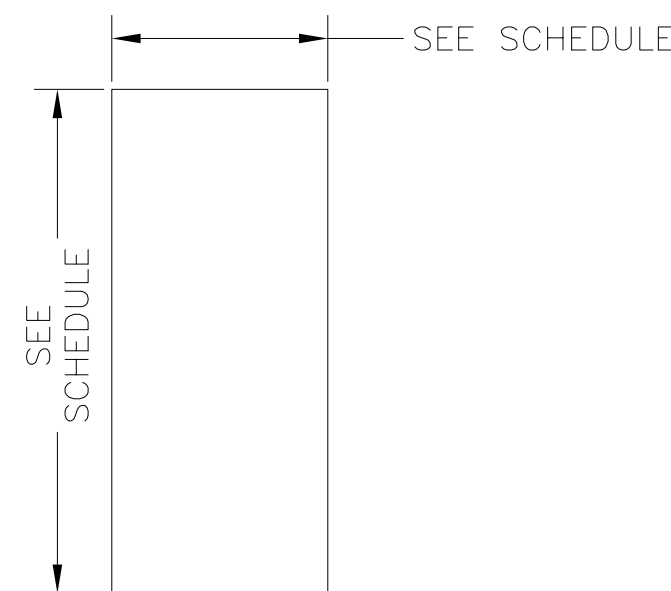
DOOR FRAME 2
HOLLOW METAL W/ FACTORY-WELDED CORNERS - SHOP PRIME FOR FIELD PAINT GAUGE PER SPEC



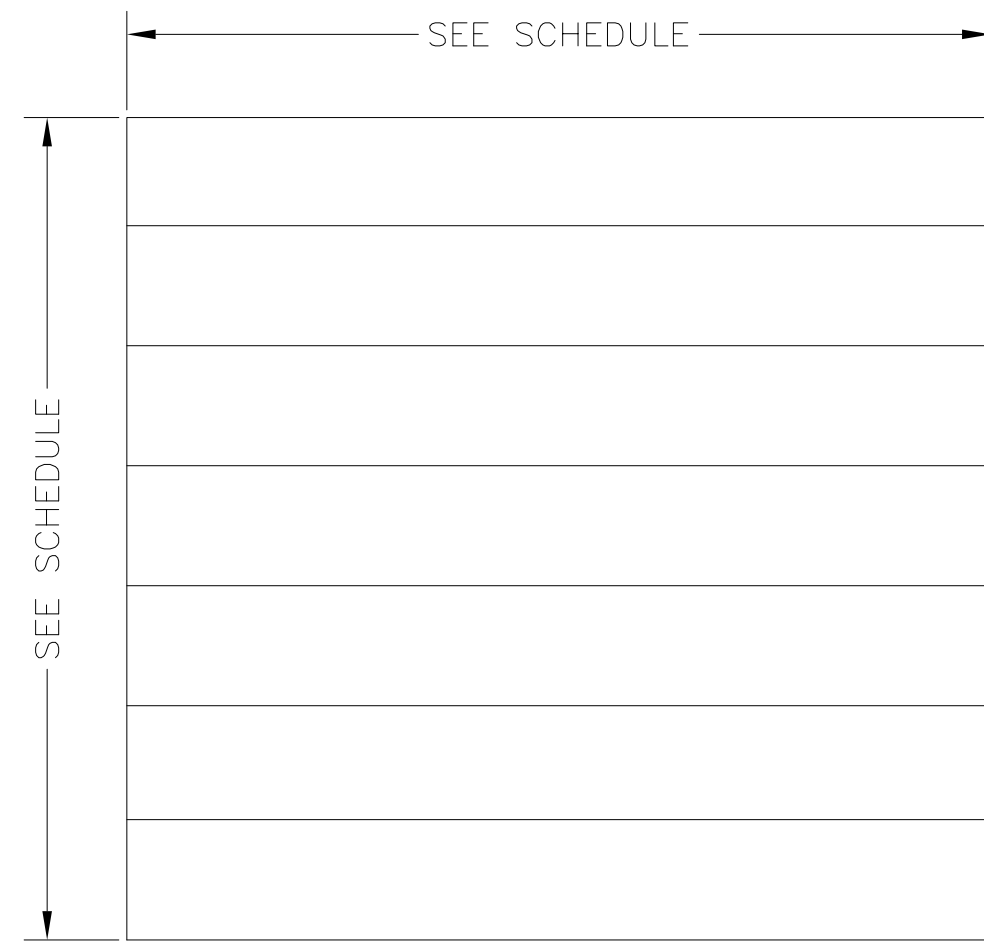
DOOR TYPE A
INTERIOR, 18 GAUGE, INSULATED HOLLOW METAL FLUSH FACE DOOR W/ SHOP PRIME FOR FIELD PAINT



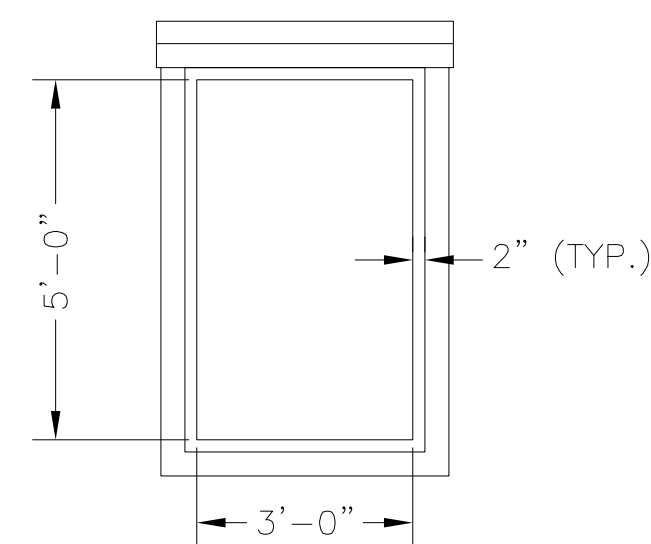
DOOR TYPE B
INTERIOR, 18 GAUGE, INSULATED HOLLOW METAL FLUSH FACE DOOR W/ SHOP PRIME FOR FIELD PAINT



DOOR TYPE C
EXTERIOR, 14 GAUGE, INSULATED HOLLOW METAL FLUSH FACE DOOR W/ SHOP PRIME FOR FIELD PAINT



DOOR TYPE C
2-INCH THICK, INSULATED STEEL SECTIONAL OVERHEAD DOOR. SEE SPECS FOR GAUGE AND INSULATION. HARDWARE PER MANUFACTURER



WINDOW
EXTERIOR WINDOW TO MATCH EX., 14 GAUGE METAL FRAME. SEE RIGHT FOR GLAZING. FACTORY WELDED CORNERS - SHOP PRIME FOR FIELD PAINT.

DOOR/WINDOW SCHEDULE									
PLAN MARK	SIZE	DOOR			FRAME			*GLAZING TYPE	REMARKS
		TYPE	MAT'L.	FINISH	TYPE	MAT'L.	FINISH		
100A	3'-0" x 7'-0"	A	HM	PAINT	2	HM	PAINT		• SEE SPECIFICATIONS FOR HARDWARE
100B	3'-0" x 7'-0"	B	HM	PAINT	2	HM	PAINT	B	• SEE SPECIFICATIONS FOR HARDWARE
100C	3'-0" x 7'-0"	C	HM	PAINT	2	HM	PAINT		• SEE SPECIFICATIONS FOR HARDWARE
100D	12'-0" WIDE 12'-0" HIGH	C	STEEL	PAINT	1	HM	PAINT		• SEE MANUFACTURER'S SPECIFICATIONS FOR HARDWARE
A	3'-0" WIDE 5'-0" HIGH				SEE BELOW	HM	PAINT	A	• FIXED, MOUNT 4'-2" A.F.F. TO MATCH EXISTING

*GLAZING LEGEND	
A	INSULATED, LAMINATED, LOW-E
B	6"x24" WIRE GLASS LITE WITH GL-3 ON OUTBOARD PANE

DOOR/WINDOW SCHEDULE DETAILS
SCALE: N.T.S.

JDS-HYDRO CONSULTANTS, INC.
5540 TECH CENTER DR., SUITE 100
COLORADO SPRINGS, COLORADO 80919
(719) 227-0072

UNLESS THE CONTRACTOR SHALL VERIFY ALL DIMENSIONS, ANY ERRORS OR OMISSIONS SHALL BE REPORTED TO JDS-HYDRO CONSULTANTS, INC. JDS-HYDRO ASSUMES NO LIABILITY FOR UNAUTHORIZED CHANGES AND/OR REVISIONS MADE TO PLANS.

MERIDIAN SERVICE METROPOLITAN DISTRICT
WATER TREATMENT PLANT EXPANSION
ARCHITECTURAL DOOR/WINDOW SCHEDULE/DETAILS

REVISIONS			
NO.	DESCRIPTION	BY	DATE
1			
2			
3			
4			
5			
6			
7			

FOR REVIEW

Project No.: 151.52
Date: 02/23/22
Design: RMM
Drawn: SKG
Check: RMM

NOTE: TBD BY EPC

PCD File No. PPR-21-

A5
SHEET OF