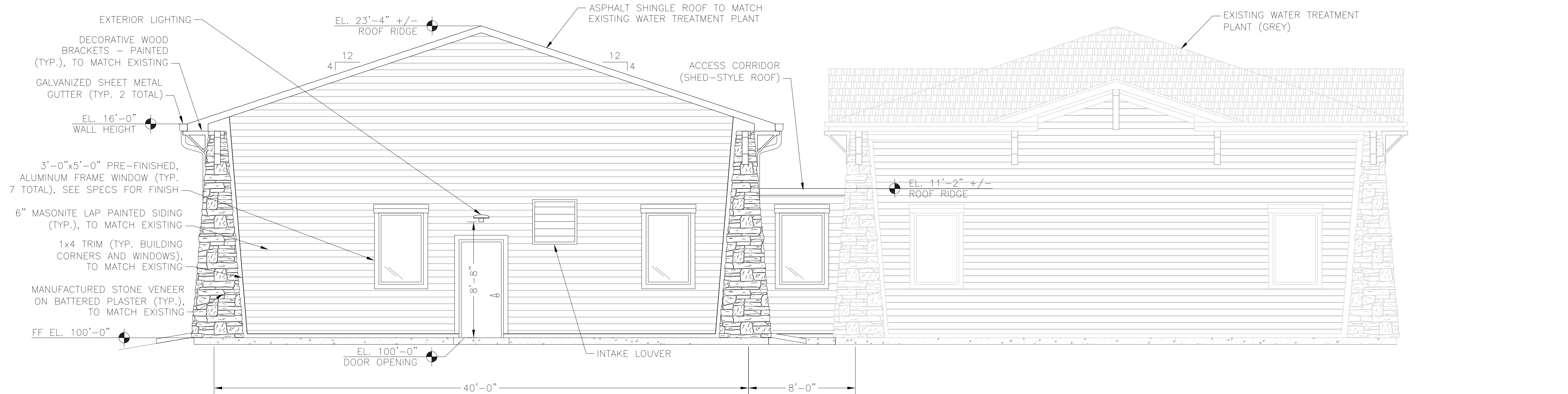
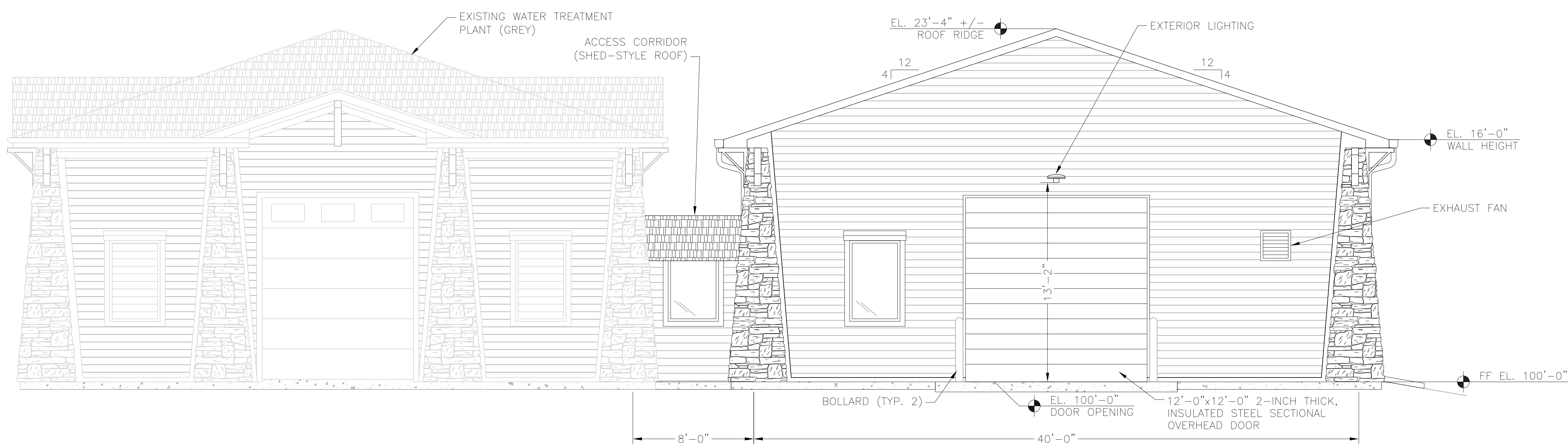


2022/02/18 2:45 PM By: Shelby Gustin N:\Projects\151 Meridian Service Metropolitan District\151.52 WTP Expansion_SBP\Drawings\Working\151.52_3_Architectural.dwg



ARCHITECTURAL NORTH ELEVATION
 11x17 SCALE: 1/8"=1'-0" +/-
 24x36 SCALE: 1/4"=1'-0" +/-



ARCHITECTURAL SOUTH ELEVATION
 11x17 SCALE: 1/8"=1'-0" +/-
 24x36 SCALE: 1/4"=1'-0" +/-

NOTE: TBD BY EPC

PCD File No. PPR-21-

JDS-HYDRO CONSULTANTS, INC.
 5540 TECH CENTER DR., SUITE 100
 COLORADO SPRINGS, COLORADO 80919
 (719) 227-0072

UNLESS THE CONTRACTOR SHALL VERIFY ALL DIMENSIONS, ANY ERRORS OR OMISSIONS SHALL BE REPORTED TO JDS-HYDRO CONSULTANTS, INC. JDS-HYDRO ASSUMES NO LIABILITY FOR UNAUTHORIZED CHANGES AND/OR REVISIONS MADE TO PLANS.

MERIDIAN SERVICE METROPOLITAN DISTRICT
 WATER TREATMENT PLANT EXPANSION
 BUILDING ELEVATIONS 1

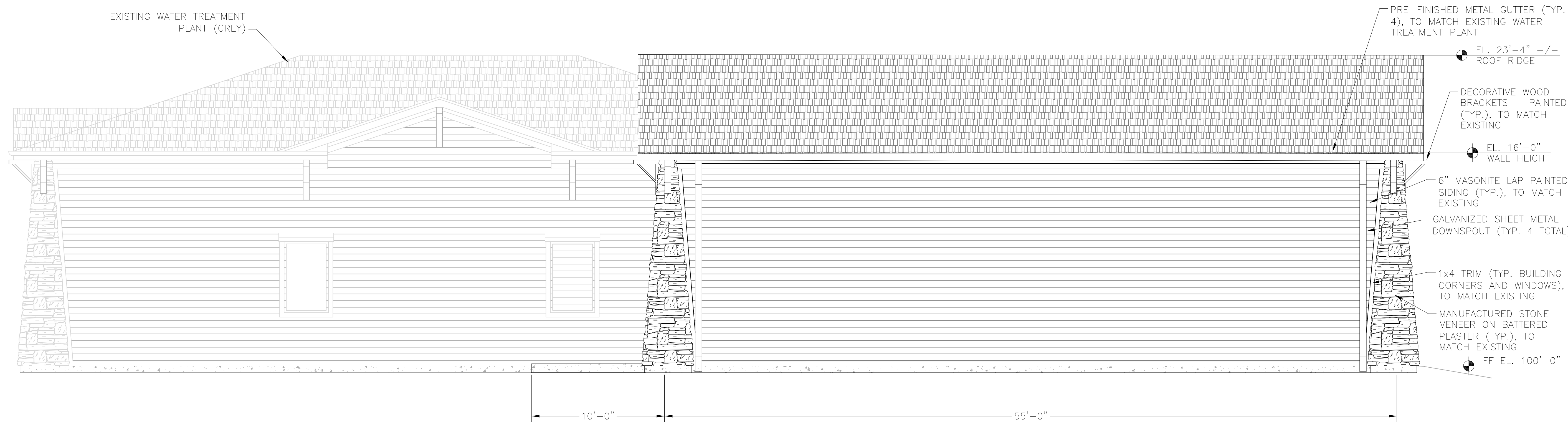
NO.	DESCRIPTION	BY	APP.	DATE
1				
2				
3				
4				
5				
6				
7				

PRELIMINARY

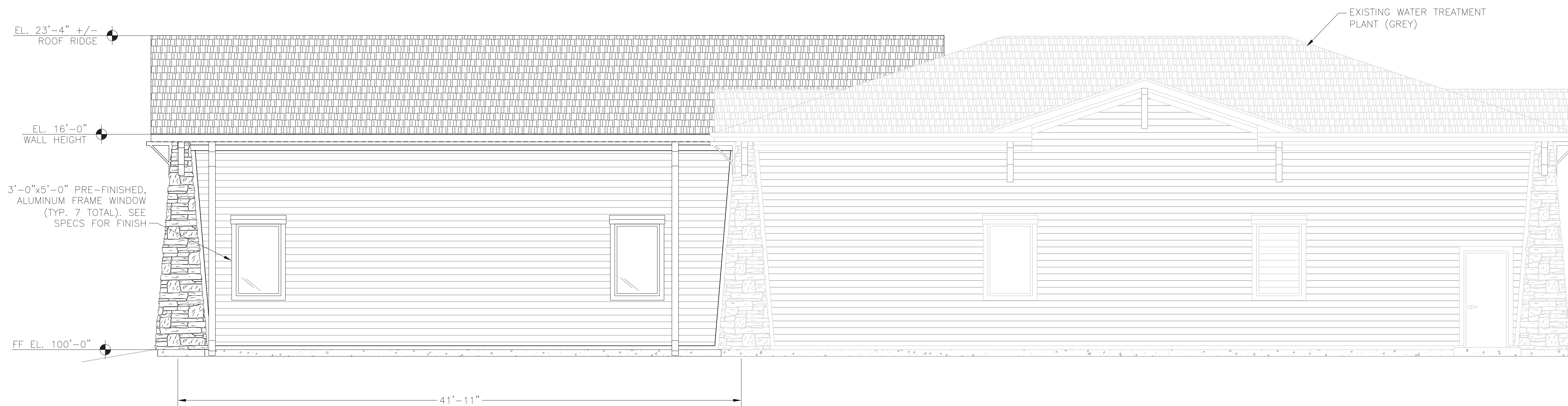
Project No.: 151.52
 Date: 02/18/22
 Design: RMM
 Drawn: SKG
 Check: RMM

A3
 SHEET OF

2022/02/18 2:46 PM By: Shelby Gustin M:\Projects\151 Meridian Service Metropolitan District\151.52 WTP Expansion_SBP\Drawings\Working\151.52_3_Architectural.dwg



ARCHITECTURAL EAST ELEVATION
 11x17 SCALE: 1/8"=1'-0" +/-
 24x36 SCALE: 1/4"=1'-0" +/-



ARCHITECTURAL WEST ELEVATION
 11x17 SCALE: 1/8"=1'-0" +/-
 24x36 SCALE: 1/4"=1'-0" +/-

JDS-HYDRO CONSULTANTS, INC.
 5540 TECH CENTER DR., SUITE 100
 COLORADO SPRINGS, COLORADO 80919
 (719) 227-0072

UNLESS OTHERWISE SPECIFIED, THE CONTRACTOR SHALL VERIFY ALL DIMENSIONS. ANY ERRORS OR OMISSIONS SHALL BE REPORTED TO JDS-HYDRO CONSULTANTS, INC. JDS-HYDRO ASSUMES NO LIABILITY FOR UNAUTHORIZED CHANGES AND/OR REVISIONS MADE TO PLANS.

MERIDIAN SERVICE METROPOLITAN DISTRICT
 WATER TREATMENT PLANT EXPANSION
 BUILDING ELEVATIONS 2

REVISIONS		
NO.	DESCRIPTION	BY APP. DATE
1		
2		
3		
4		
5		
6		
7		

PRELIMINARY

Project No.: 151.52
 Date: 02/18/22
 Design: RMM
 Drawn: SKG
 Check: RMM

NOTE: TBD BY EPC
PCD File No. PPR-21-

A4
 SHEET OF