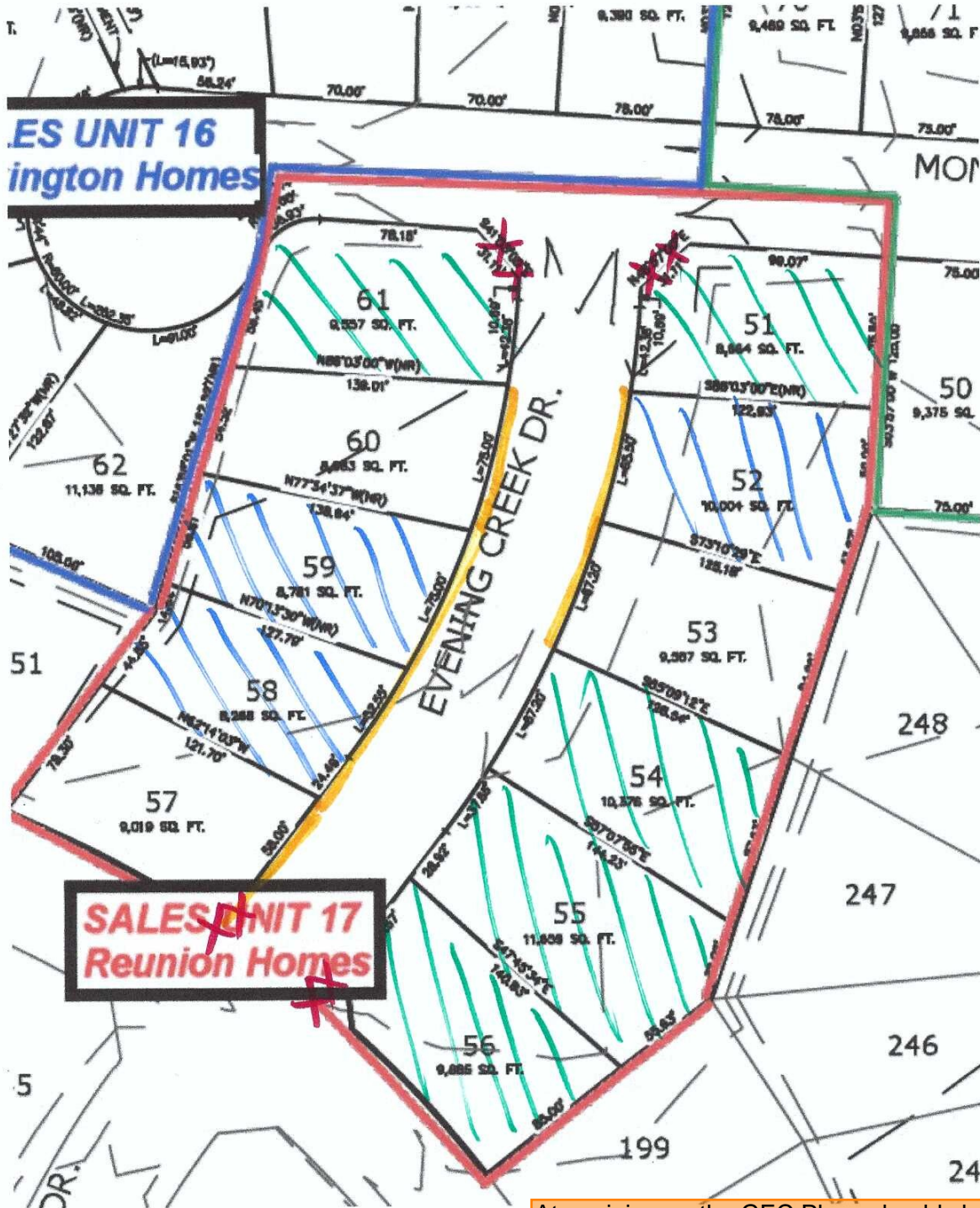






Rolling Hills Ranch

File #3



-  Inlet protection
-  Under construction
-  closed homes
-  BMP's

At a minimum, the GEC Plans should clearly show the limits of construction (i.e., the permitted area), specific control measure types, and general direction of flow.

Refer to the example GEC plan sent via email for GEC Plan expectations.

Show lots 57, 53, 60, and any active ZRH lots with existing BESQCPs as your limits of construction.