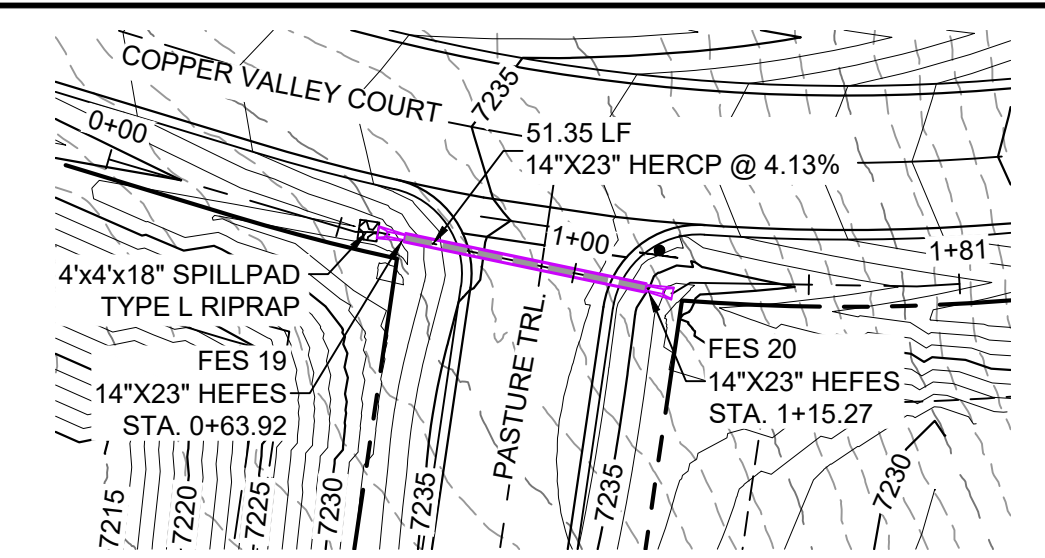
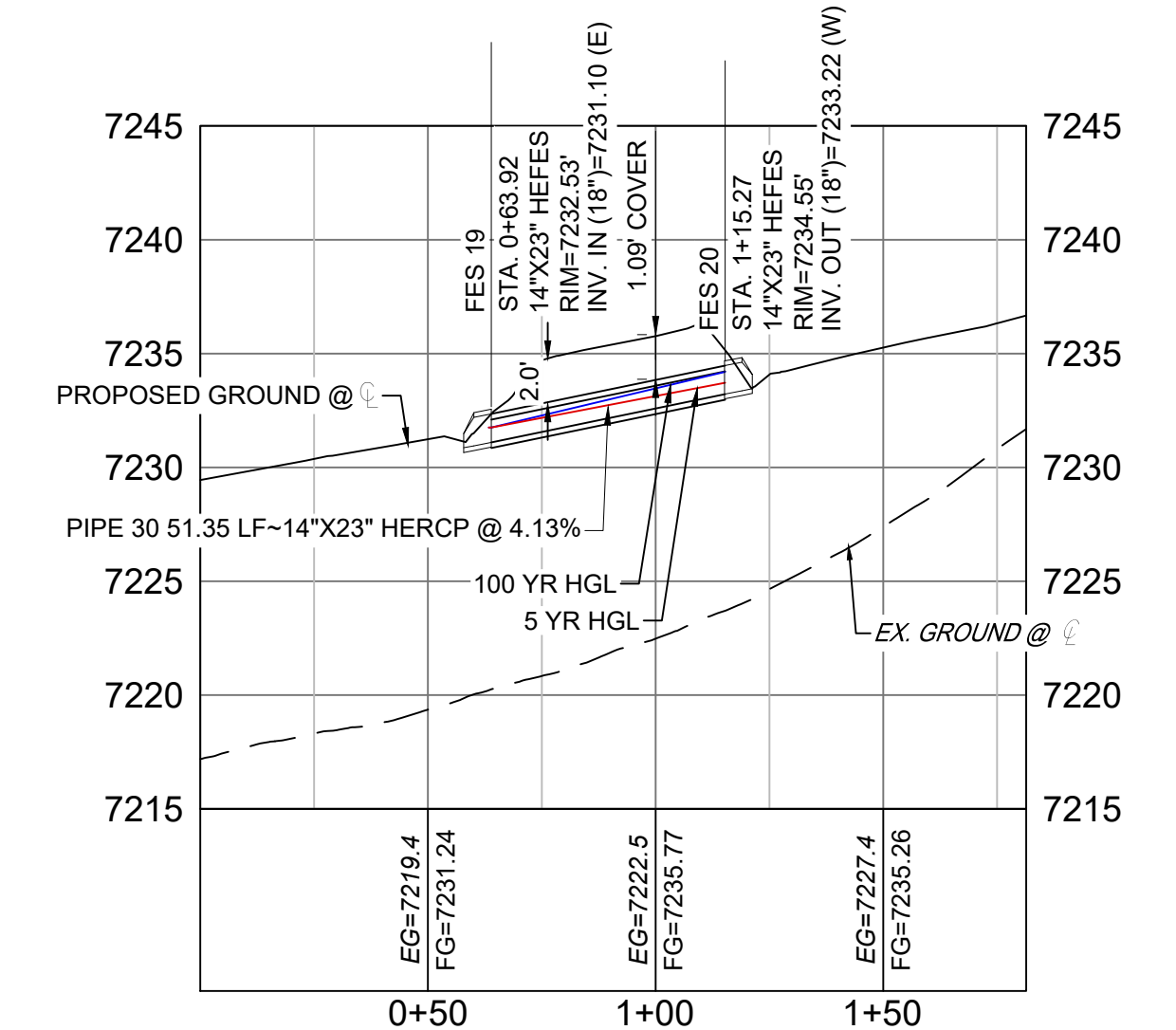




Know what's below.
Call before you dig.



**COPPER VALLEY COURT
STORM CULVERT 4 PLAN**



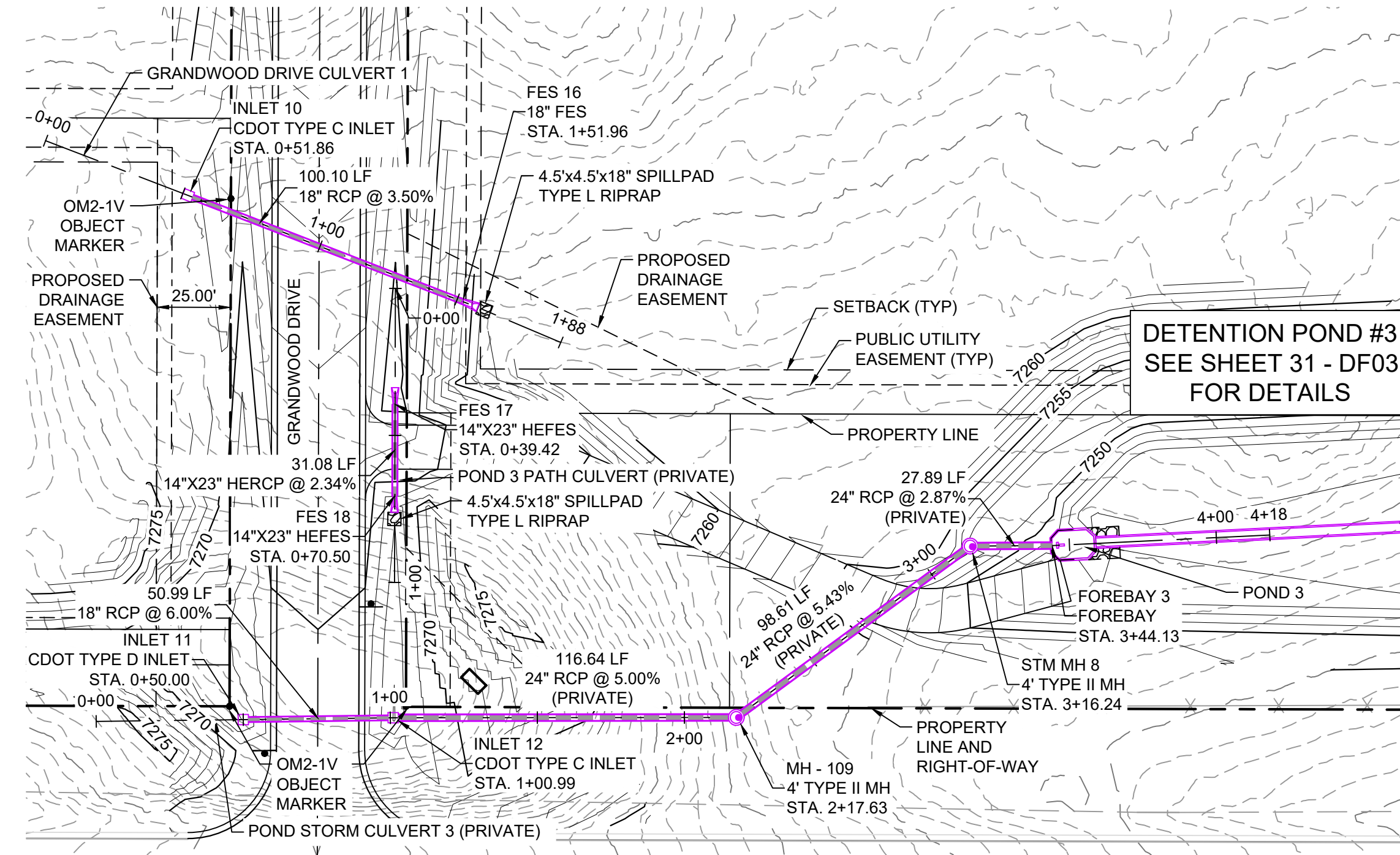
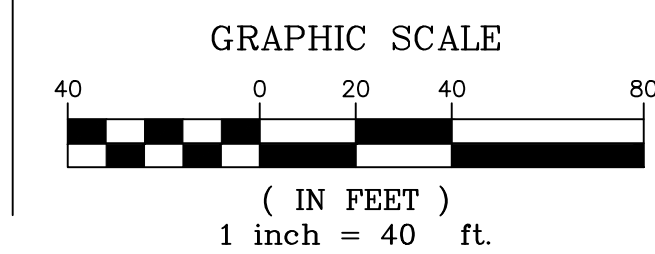
**COPPER VALLEY COURT STORM
CULVERT 4 PROFILE**

HORIZ: 1" = 40'
VERT: 1" = 8'

STRUCTURE TABLE			
NAME	TYPE	DETAILS	N&E
FES 19	14"x23" HEFES	RIM = 7232.53 PIPE 30 INV IN = 7231.10	N: 1454867.92 E: 3191823.61
FES 20	14"x23" HEFES	RIM = 7234.55 PIPE 30 INV OUT = 7233.22	N: 1454857.43 E: 3191873.88

PIPE TABLE				
NAME	SIZE	LENGTH	SLOPE	BEARING
PIPE 30	14"x23" HERCP	51.35	4.13%	N78°12'45"W

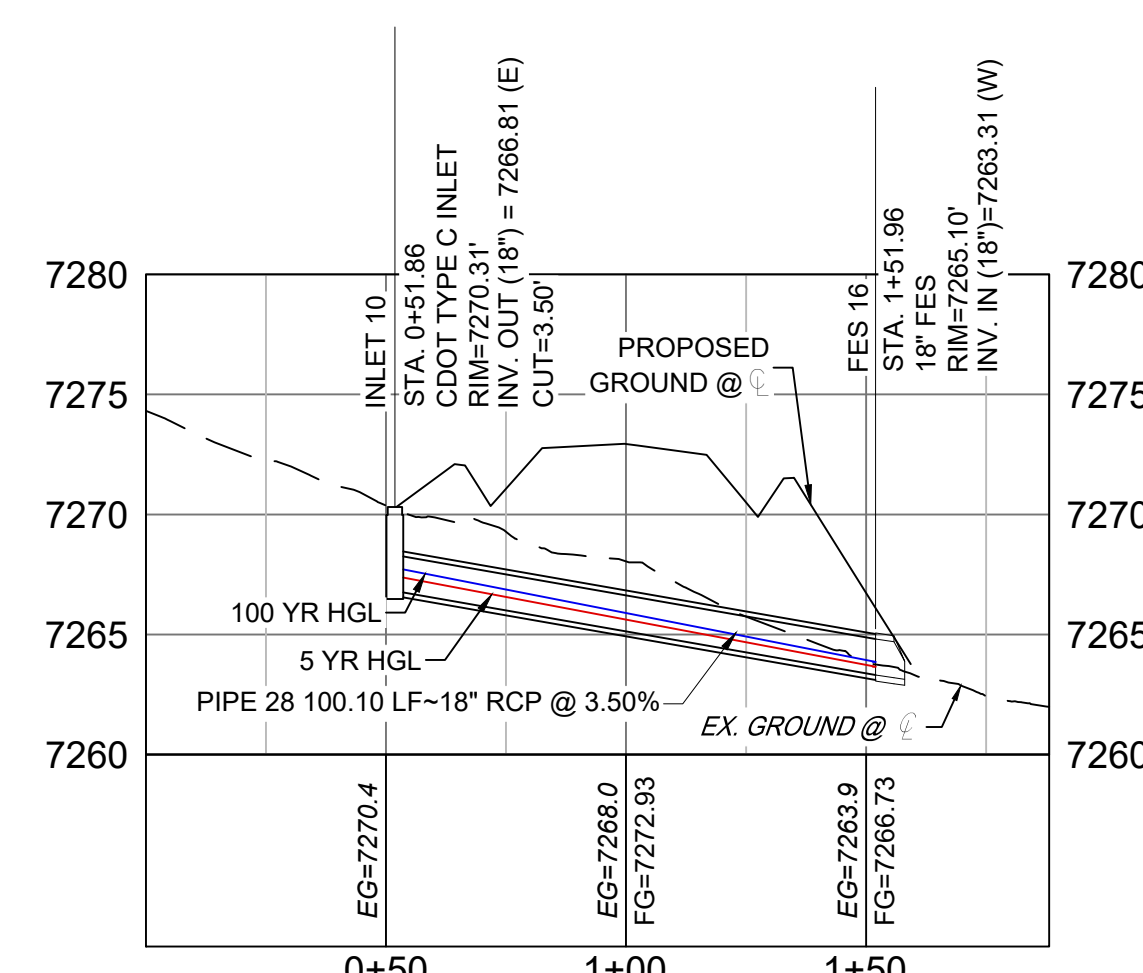
- NOTES:**
- ALL STATION, OFFSET, AND NORTHING/EASTING VALUES ARE TO THE CENTER OF ALL STRUCTURES UNLESS OTHERWISE NOTED.
 - PIPE LENGTHS ARE MEASURED FROM CENTER TO CENTER OF ALL STRUCTURES.
 - ALL PIPE BENDS ANGLES ARE MEASURED FROM THE CENTER OF PIPE.
 - CONTRACTOR TO FIELD VERIFY HORIZONTAL AND VERTICAL LOCATION OF EXISTING STRUCTURES.
 - ALL TYPE C AND TYPE D INLETS SHALL BE CONSTRUCTED AND INSTALLED PER CDOT M&S STANDARD DETAILS. ELEVATIONS PROVIDED REFER TO TOP OF GRATE/STRUCTURE ELEVATION.
 - ALL RCP PIPE SHALL BE CLASS III UNLESS OTHERWISE NOTED.
 - PIPES OF DIFFERENT SIZES ARE TO BE MATCHED TO THE CROWN OF THE INSIDE WALL OF PIPE.
 - PER THE EL PASO COUNTY ENGINEERING CRITERIA MANUAL, MANHOLES SHALL BE INSTALLED 1/8" BELOW THE SURFACE OF THE PAVEMENT ON THE LOWEST SIDE OF THE MANHOLE.
 - SECTIONS OF STORM PIPE WITH PRESSURE HEAD DURING THE 100 YR STORM SHALL USE WATERTIGHT JOINTS WITH A 100 YR SERVICE LIFE PER ECM 3.3.1.B.2.
 - ALL STORM SEWER IS PRIVATE UNLESS OTHERWISE NOTED. STORM SEWER SHALL BE OWNED AND MAINTAINED BY THE GRANDWOOD RANCH HOMEOWNER ASSOCIATION, INC.



GRANDWOOD DRIVE STORM PLAN

STRUCTURE TABLE			
NAME	TYPE	DETAILS	N&E
FES 16	18" FES	RIM = 7265.10 PIPE 28 INV IN = 7263.31	N: 1454323.80 E: 3193225.19
INLET 10	CDOT TYPE C INLET	RIM = 7270.31 PIPE 28 INV OUT = 7266.81	N: 1454359.90 E: 3193131.83

PIPE TABLE				
NAME	SIZE	LENGTH	SLOPE	BEARING
PIPE 28	18" RCP	100.10	3.50%	S68°51'39"E

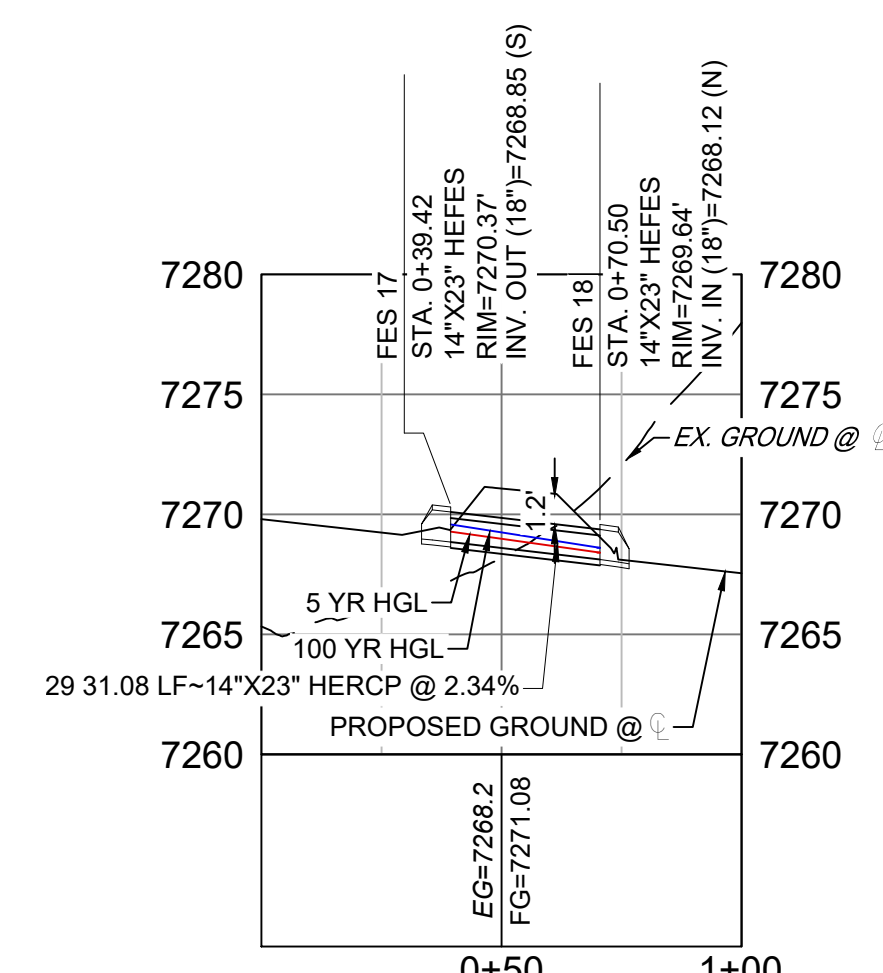


**GRANDWOOD DRIVE STORM
CULVERT 1 PROFILE**

HORIZ: 1" = 40'
VERT: 1" = 8'

STRUCTURE TABLE			
NAME	TYPE	DETAILS	N&E
FES 17	14"x23" HEFES	RIM = 7270.37 PIPE 29 INV OUT = 7268.85	N: 1454288.84 E: 3193202.25
FES 18	14"x23" HEFES	RIM = 7269.64 PIPE 29 INV IN = 7268.12	N: 1454257.76 E: 3193202.16

PIPE TABLE				
NAME	SIZE	LENGTH	SLOPE	BEARING
PIPE 29	14"x23" HERCP	31.08	2.34%	S00°09'43"W

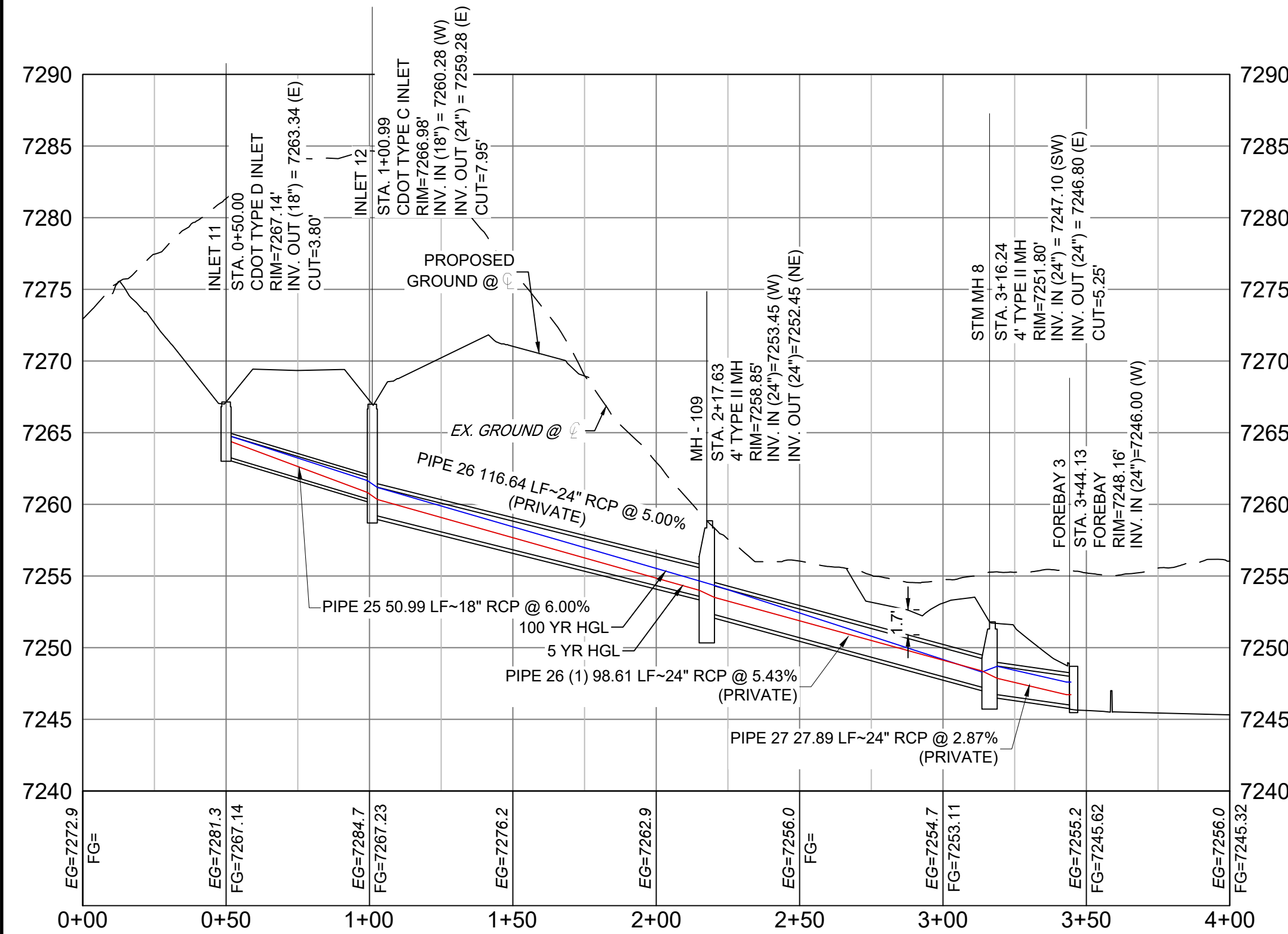


**GRANDWOOD DRIVE STORM
CULVERT 1 PROFILE**

HORIZ: 1" = 40'
VERT: 1" = 8'

PIPE TABLE				
NAME	SIZE	LENGTH	SLOPE	BEARING
PIPE 25	18" RCP	50.99	6.00%	N89°17'24"E
PIPE 26	24" RCP	116.64	5.00%	N89°56'58"E
PIPE 26 (1)	24" RCP	98.61	5.43%	N53°45'43"E
PIPE 27	24" RCP	27.89	2.87%	N89°39'27"E

STRUCTURE TABLE			
NAME	TYPE	DETAILS	N&E
FOREBAY 3	FOREBAY	RIM = 7248.16 PIPE 27 INV IN = 7246.00	N: 1454240.80 E: 3193425.69
INLET 11	CDOT TYPE D INLET	RIM = 7267.14 PIPE 25 INV OUT = 7263.34	N: 1454181.61 E: 3193150.64
INLET 12	CDOT TYPE C INLET	RIM = 7266.98 PIPE 25 INV IN = 7260.28 PIPE 26 INV OUT = 7259.28	N: 1454182.24 E: 3193201.62
MH - 109	4' TYPE II MH	RIM = 7258.85 PIPE 26 INV IN = 7253.45 PIPE 26 (1) INV OUT = 7252.45	N: 1454182.34 E: 3193318.26
STM MH 8	4' TYPE II MH	RIM = 7251.80 PIPE 26 (1) INV IN = 7247.10 PIPE 27 INV OUT = 7246.80	N: 1454240.64 E: 3193397.80



POND STORM CULVERT 3 PROFILE

HORIZ: 1" = 40'
VERT: 1" = 8'

REFERENCE DRAWINGS	###	###	###	###
X-Title-Plan & Profile	###	###	###	###
X-1105-PR-SITE	###	###	###	###
No.	DATE	DESCRIPTION	BY	
REVISIONS				
COMPUTER FILE MANAGEMENT				
FILE NAME: s:\20.1105.004 grandwood ranch\100 Dwg\104 plan sets\construction plans\road & storm plans\SD02.dwg				
CTB FILE: February 8, 2021 9:21:15 AM				
PLOT DATE: February 8, 2021 9:21:15 AM				
THIS DRAWING IS CURRENT AS OF PLOT DATE AND MAY BE SUBJECT TO CHANGE				

SHEET KEY	BENCHMARK	OWNER:
	NGS T 294 ELEVATION - 7247.10 NAVD 88	SYLVAN VISTA, INC. WILLIAM F. HEREBIC II, MANAGER 14160 GLENEAGLE DRIVE, COLORADO SPRINGS, CO 80921
BASIS OF BEARING:	PREPARED BY:	SEAL
A LINE THAT IS 20' NORTH OF AND PARALLEL WITH THE EAST-WEST CENTER LINE OF SECTION 19, T11S, R66W, N89°56'32"W - 5135.84'. THE DIRECTION IS A GRID BEARING OF THE COLORADO STATION PLANE COORDINATE SYSTEM, CENTRAL ZONE, N.A.D. 1983. THE LINE IS MONUMENTED BY 5/8" DIAMETER REBAR, 18" IN LENGTH WITH 1-1/2" ALUMINUM CAPS "LWA PLS 2865"		FOR AND ON BEHALF OF MATRIX DESIGN GROUP, INC. PROJECT No. 20.1120.003

DESIGNED BY:	CAP	SCALE	DATE ISSUED:	FEBRUARY, 2021	DRAWING No.
DRAWN BY:	CAP	HORIZ: 1" = 40'	SHEET	27 OF 40	SD05
CHECKED BY:	NMS	VERT: 1" = 8'			