

# TRAILS AT ASPEN RIDGE

## REZONE PLAN

A TRACT OF LAND LOCATED IN A PORTION OF THE WEST 1/2 OF SECTION 9, TOWNSHIP 15 SOUTH, RANGE 65 WEST OF THE 6TH P.M., EL PASO COUNTY, COLORADO

**LEGAL DESCRIPTION:**

A TRACT OF LAND LOCATED IN A PORTION OF THE WEST 1/2 OF SECTION 9, TOWNSHIP 15 SOUTH, RANGE 65 WEST OF THE 6TH P.M., EL PASO COUNTY, COLORADO, MORE PARTICULARLY DESCRIBED AS FOLLOWS:

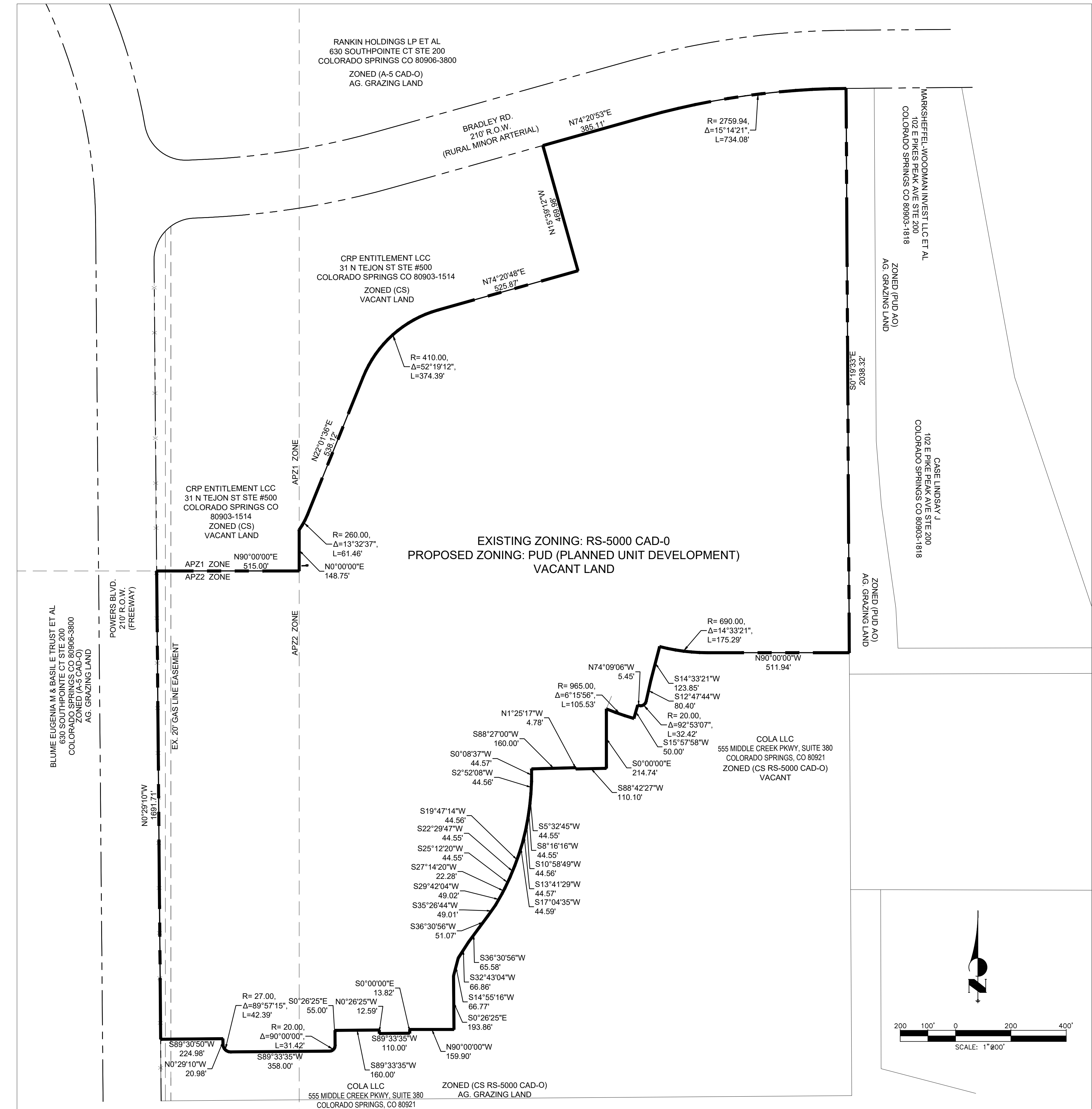
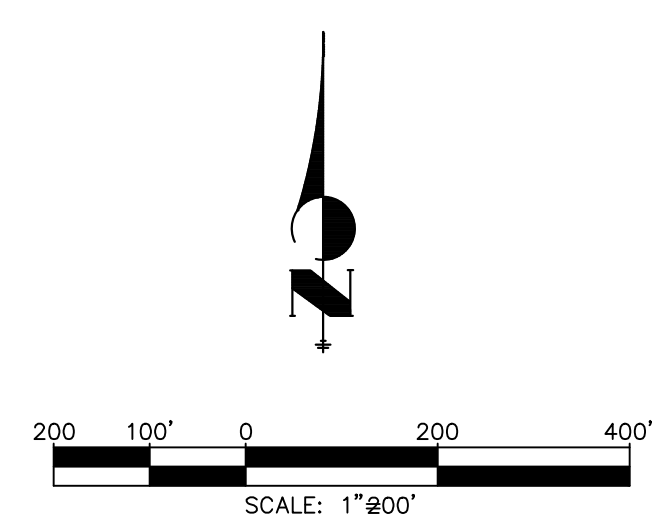
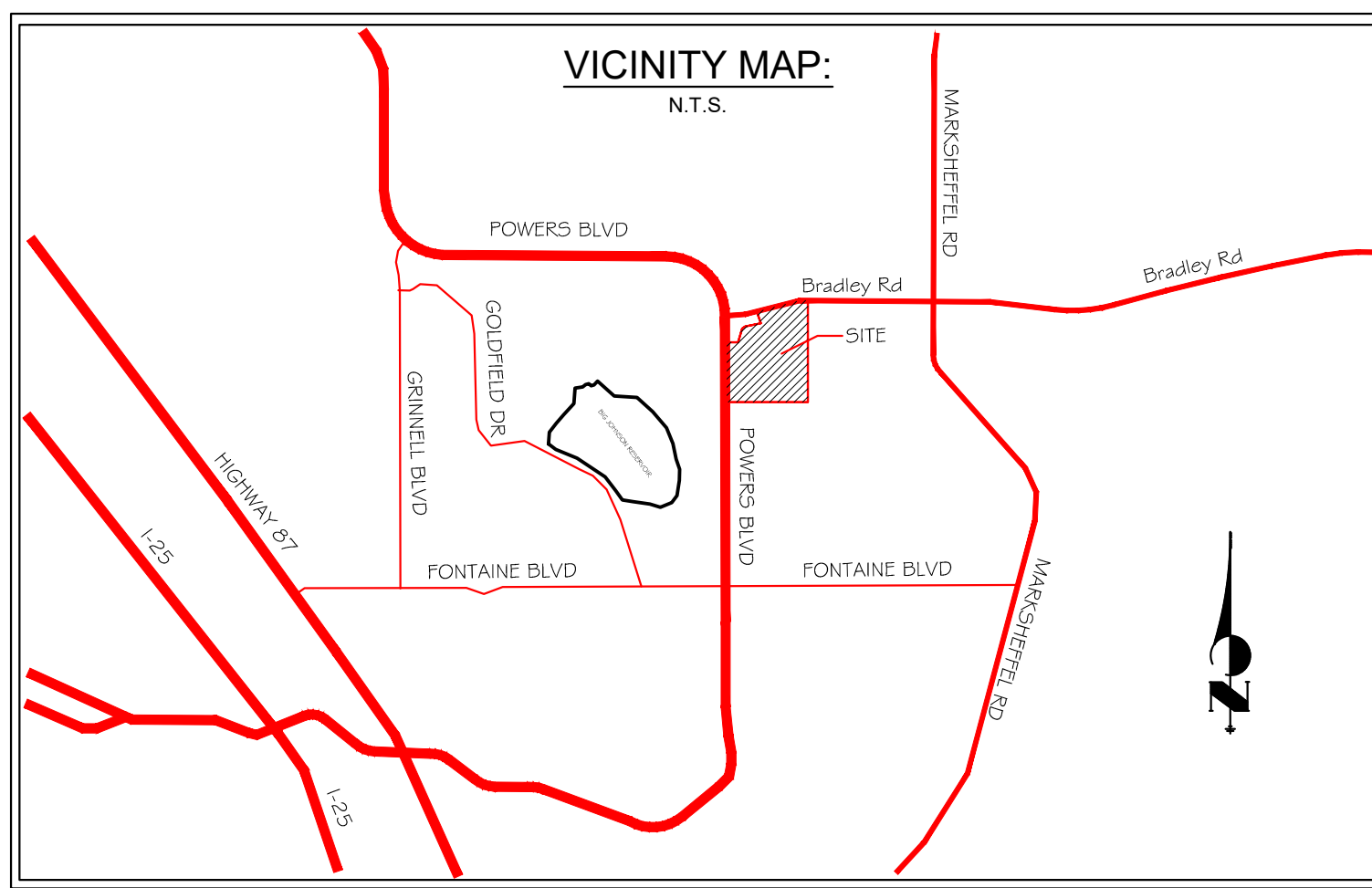
COMMENCING AT THE SOUTH 1/4 CORNER OF SAID SECTION 9; THENCE N00°19'32"W ON THE NORTH-SOUTH 1/4 LINE OF SAID SECTION 9, A DISTANCE OF 1,600.02 FEET TO THE POINT OF BEGINNING OF THIS DESCRIPTION;

- 1) THENCE N80°00'00"W A DISTANCE OF 511.94 FEET TO A POINT OF CURVE TO THE RIGHT;
- 2) THENCE ON THE ARC OF SAID CURVE, HAVING A RADIUS OF 690.00 FEET, A DELTA ANGLE OF 14°33'21", AN ARC LENGTH OF 175.29 FEET, WHOSE LONG CHORD BEARS N82°43'20"W A DISTANCE OF 174.82 FEET;
- 3) THENCE S14°33'21"W A DISTANCE OF 123.85 FEET;
- 4) THENCE S12°47'44"W A DISTANCE OF 80.40 FEET TO A POINT OF CURVE TO THE RIGHT;
- 5) THENCE ON THE ARC OF SAID CURVE, HAVING A RADIUS OF 20.00 FEET, A DELTA ANGLE OF 92°52'44", AN ARC LENGTH OF 32.42 FEET, WHOSE LONG CHORD BEARS S89°14'18"W A DISTANCE OF 28.99 FEET TO A POINT OF COMPOUND CURVE TO THE RIGHT;
- 6) THENCE ON THE ARC OF SAID CURVE, HAVING A RADIUS OF 915.00 FEET, A DELTA ANGLE OF 00°20'29", AN ARC LENGTH OF 5.45 FEET, WHOSE LONG CHORD BEARS N74°09'06"W A DISTANCE OF 5.45 FEET;
- 7) THENCE S15°57'58"W A DISTANCE OF 50.00 FEET TO A NON-TANGENT CURVE TO THE RIGHT;
- 8) THENCE ON THE ARC OF SAID CURVE, HAVING A RADIUS OF 965.00 FEET, A DELTA ANGLE OF 06°15'56", AN ARC LENGTH OF 105.53 FEET, WHOSE LONG CHORD BEARS N70°51'04"W A DISTANCE OF 105.47 FEET;
- 9) THENCE S00°00'00"W A DISTANCE OF 214.74 FEET;
- 10) THENCE S88°42'27"W A DISTANCE OF 110.10 FEET;
- 11) THENCE N01°25'17"W A DISTANCE OF 4.78 FEET;
- 12) THENCE S88°27'00"W A DISTANCE OF 160.00 FEET;
- 13) THENCE S00°08'37"W A DISTANCE OF 44.57 FEET;
- 14) THENCE S02°52'08"W A DISTANCE OF 44.56 FEET;
- 15) THENCE S05°32'45"W A DISTANCE OF 44.55 FEET;
- 16) THENCE S08°16'16"W A DISTANCE OF 44.55 FEET;
- 17) THENCE S10°58'49"W A DISTANCE OF 44.56 FEET;
- 18) THENCE S13°41'29"W A DISTANCE OF 44.57 FEET;
- 19) THENCE S17°04'35"W A DISTANCE OF 44.59 FEET;
- 20) THENCE S19°47'14"W A DISTANCE OF 44.56 FEET;
- 21) THENCE S22°29'47"W A DISTANCE OF 44.55 FEET;
- 22) THENCE S25°12'20"W A DISTANCE OF 44.55 FEET;
- 23) THENCE S27°14'20"W A DISTANCE OF 22.28 FEET;
- 24) THENCE S29°42'04"W A DISTANCE OF 49.02 FEET;
- 25) THENCE S35°26'44"W A DISTANCE OF 49.01 FEET;
- 26) THENCE S36°30'56"W A DISTANCE OF 116.64 FEET;
- 27) THENCE S32°43'04"W A DISTANCE OF 66.86 FEET;
- 28) THENCE S14°55'16"W A DISTANCE OF 66.77 FEET;
- 29) THENCE S00°26'25"E A DISTANCE OF 193.86 FEET;
- 30) THENCE S90°00'00"W A DISTANCE OF 159.90 FEET;
- 31) THENCE S00°00'00"E A DISTANCE OF 13.82 FEET;
- 32) THENCE S89°33'35"W A DISTANCE OF 110.00 FEET;
- 33) THENCE N00°29'10"W A DISTANCE OF 12.59 FEET;
- 34) THENCE S89°33'35"W A DISTANCE OF 160.00 FEET;
- 35) THENCE S00°26'25"E A DISTANCE OF 55.00 FEET TO A POINT OF CURVE TO THE RIGHT;
- 36) THENCE ON THE ARC OF SAID CURVE, HAVING A RADIUS OF 20.00 FEET, A DELTA ANGLE OF 90°00'00", AN ARC LENGTH OF 31.42 FEET, WHOSE LONG CHORD BEARS S44°33'35"W A DISTANCE OF 28.28 FEET;
- 37) THENCE S89°33'35"W A DISTANCE OF 368.00 FEET TO A POINT OF CURVE TO THE RIGHT;
- 38) THENCE ON THE ARC OF SAID CURVE, HAVING A RADIUS OF 27.00 FEET, A DELTA ANGLE OF 89°57'15", AN ARC LENGTH OF 42.39 FEET, WHOSE LONG CHORD BEARS N45°27'48"W A DISTANCE OF 38.17 FEET;
- 39) THENCE N00°29'10"W A DISTANCE OF 20.98 FEET;
- 40) THENCE S89°30'50"W A DISTANCE OF 224.98 FEET TO A POINT ON THE EASTERLY RIGHT-OF-WAY LINE OF HIGHWAY 21, AS RECORDED IN BOOK 5307 AT PAGE 1472 OF THE RECORDS OF SAID EL PASO COUNTY;
- 41) THENCE N00°29'10"W ON SAID RIGHT-OF-WAY LINE, A DISTANCE OF 1,691.70 FEET;
- 42) THENCE S90°00'00"E A DISTANCE OF 515.00 FEET;
- 43) THENCE N00°00'00"E A DISTANCE OF 148.75 FEET TO A NON-TANGENT CURVE TO THE LEFT;
- 44) THENCE ON THE ARC OF SAID CURVE, HAVING A RADIUS OF 280.00 FEET, A DELTA ANGLE OF 13°32'37", AN ARC LENGTH OF 61.46 FEET, WHOSE LONG CHORD BEARS N28°47'53"E A DISTANCE OF 61.32 FEET;
- 45) THENCE N22°01'36"E A DISTANCE OF 538.12 FEET TO A POINT OF CURVE TO THE RIGHT;
- 46) THENCE ON THE ARC OF SAID CURVE, HAVING A RADIUS OF 410.00 FEET, A DELTA ANGLE OF 52°19'12", AN ARC LENGTH OF 374.39 FEET, WHOSE LONG CHORD BEARS N48°11'12"E A DISTANCE OF 381.52 FEET;
- 47) THENCE N74°20'48"E A DISTANCE OF 525.87 FEET;
- 48) THENCE N15°39'12"W A DISTANCE OF 470.00 FEET TO A POINT ON THE SOUTHERLY RIGHT-OF-WAY LINE OF BRADLEY ROAD AS RECORDED IN BOOK 5307 AT PAGE 1472 OF THE RECORDS OF SAID EL PASO COUNTY;

THE FOLLOWING THREE (3) COURSES FOLLOW SAID SOUTHERLY RIGHT-OF-WAY LINE:

- 49) THENCE N74°20'48"E A DISTANCE OF 385.15 FEET TO A POINT OF CURVE TO THE RIGHT;
- 50) THENCE ON THE ARC OF SAID CURVE, HAVING A RADIUS OF 2,759.79 FEET, A DELTA ANGLE OF 15°09'41", AN ARC LENGTH OF 730.29 FEET, WHOSE LONG CHORD BEARS N81°55'39"E A DISTANCE OF 728.16 FEET;
- 51) THENCE N89°30'29"E A DISTANCE OF 3.77 FEET TO A POINT ON THE NORTH-SOUTH 1/4 LINE OF SAID SECTION 9;
- 52) THENCE S00°19'32"E A DISTANCE OF 2,038.35 FEET TO THE POINT OF BEGINNING.

THE ABOVE TRACT OF LAND CONTAINS 5,139,369 SQUARE FEET OR 117,984 ACRES, MORE OR LESS.



### TRAILS AT ASPEN RIDGE

EL PASO COUNTY, COLORADO  
**REZONE PLAN**

CONSULTANT:  
 PLANNER/ CIVIL ENGINEER:  
**Matrix**  
 DESIGN GROUP  
 2435 Research Parkway, Suite 300  
 Colorado Springs, CO 80920  
 Phone 719-575-0100  
 Fax 719-575-0208

PROJECT:  
**TRAILS AT ASPEN RIDGE**  
**REZONE PLAN**

EL PASO COUNTY  
 FEBRUARY 2019

OWNER:  
**COLA, LLC**  
 555 MIDDLE CREEK PKWY, SUITE 380  
 COLORADO SPRINGS, CO 80921  
 (719) 382-9433

DEVELOPER:  
**COLA, LLC**  
 555 MIDDLE CREEK PKWY, SUITE 380  
 COLORADO SPRINGS, CO 80921  
 (719) 382-9433

ISSUE: FEBRUARY, 2019  
 REV1 COMMENT RESPONSE: JUNE, 2019

DRAWING INFORMATION:  
 PROJECT NO: 19.886.008  
 DRAWN BY:  
 CHECKED BY:  
 APPROVED BY:  
 SHEET TITLE:

**ZONE CHANGE**

**ZC-01**