

OWNERSHIP	--	MAOP	585 PSIG
ENVIRONMENTAL	--	CLASS LOCATION	CLASS 3 / DF = 0.5
JURISDICTION	--	TEST PRESSURE	878 PSIG (MIN.) / 1000 PSIG (MAX)
DEPTH OF COVER	4 FT MIN.	OPERATING PRESSURE	465 PSIG

LEGEND:

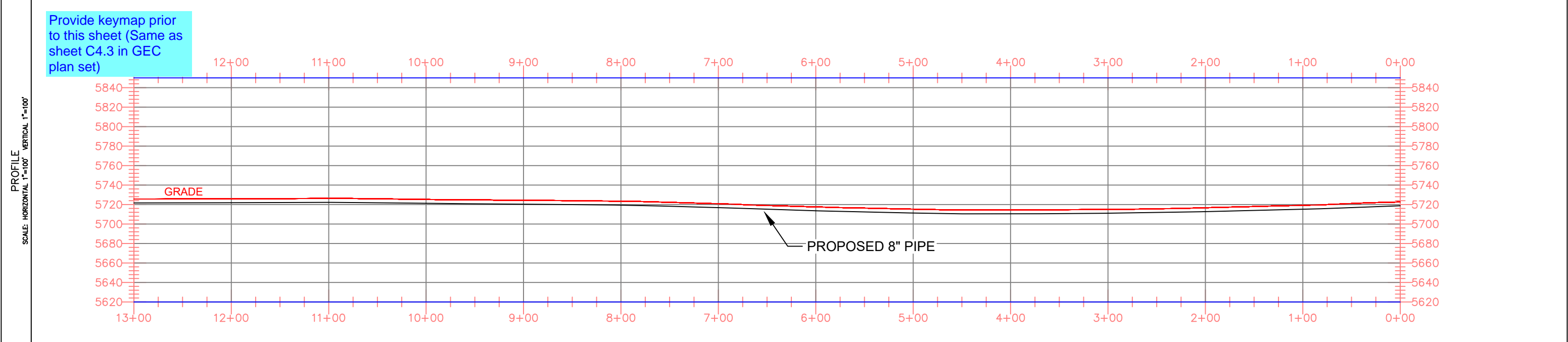
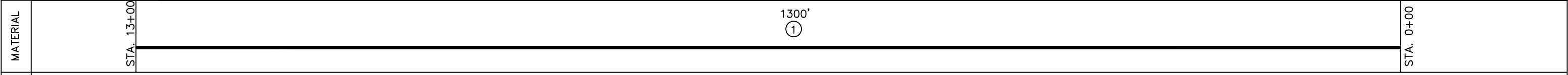
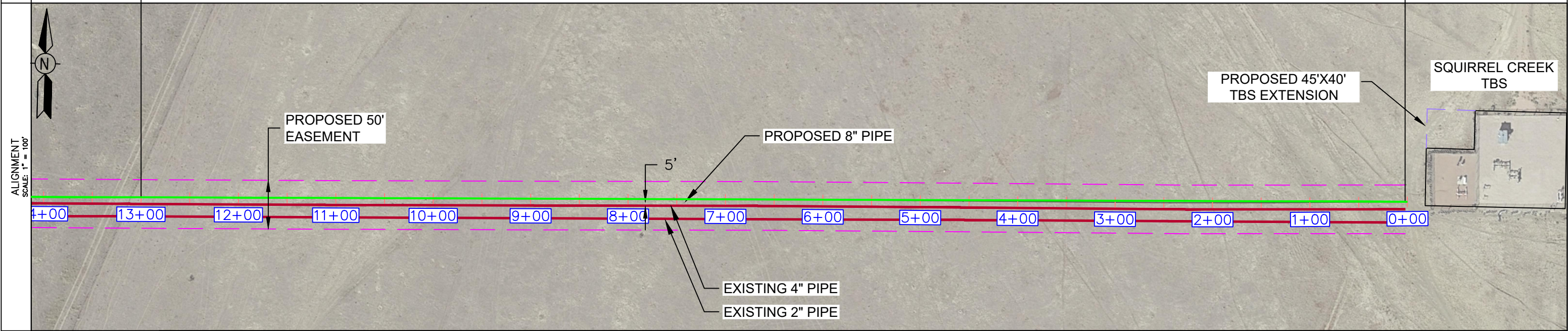
	PIPELINE		TEL. LINE		R.O.W.
	GAS PIPELINE		COMMUNICATION LINE		
	WATER LINE		OVERHEAD ELECTRIC LINE		

STATE HIGHWAY
CR COUNTY ROAD

HORIZONTAL STATIONING

MATCH LINE STA: 13+00 SEE DWG. 0322-3302

LINE START STA: 0+00



NOTES

- STATIONING IS BASED ON HORIZONTAL DISTANCES.
- ALL GAS, WATER AND UTILITY LINES SHOULD BE LOCATED PRIOR TO ANY EXCAVATING, DIGGING, OR TRENCHING ANYWHERE ON OR NEAR THIS SITE.
- BHE ASSUMES NO RESPONSIBILITY FOR THE SPECIFIC LOCATION OF ANY BURIED GAS, WATER, OR UTILITY LINES THAT MAY BE PRESENT ON OR NEAR THIS SITE, NOR IS ANY LIABILITY ASSUMED FOR ANY LEGAL ACTION WHICH RESULTS FROM A DISCOVERY OF A GAS, WATER, OR UTILITY LINE IN ADDITION TO OR IN A DIFFERENT LOCATION THAN SHOW ON THIS PLAN.
- GROUND SURVEY PROVIDED BY (SURVEYOR), (MONTH), 20XX.
- HORIZONTAL CONTROL IS BASED ON NAD83 COLORADO STATE PLANE SOUTH ZONE (0503). VERTICAL DATUM IS NAVD88 AND BASED ON AN OPUS SOLUTION UTILIZING GEOID 12B.

BILL OF MATERIALS

1	8.625" OD 0.250" WT API 5LS X52 W14-16 MILLS FBE COATING	1320'
---	----------------------------------------------------------	-------

REVISIONS

NO.	DESCRIPTION	DATE	BY	CHK.	APPRVD
A	FOR REVIEW	9/21/23	SKS	DJ	CD
B	FOR REVIEW (REVISED)	10/24/23	SKS	DJ	CD
C	ISSUED FOR BID	12/1/23	SKS	DJ	CD
D	ISSUED FOR CONSTRUCTION	12/14/23	SKS	DJ	CD

ENGINEERING DESIGN
760 ALEGRE DR.
FOUNTAIN, CO 80817

2024 CONSTRUCTION

WO: 10083285

DESIGNED IN ACCORDANCE WITH TITLE 49-PART 192 OF MINIMUM FEDERAL SAFETY STANDARDS AND GPIC GUIDE FOR GAS TRANSMISSION AND DISTRIBUTION PIPING SYSTEMS, LATEST EDITION.

SQUIRREL CREEK
ALIGNMENT & BORE PROFILE SHEET
0+00 TO 13+00

EL PASO COUNTY COLORADO

SCALE AS SHOWN DATE 9/8/23

SHEET NO. 2 of 20

ADDITIONAL INFORMATION	811 Know what's below. Call before you dig.	OWNERSHIP	--	MAOP	585 PSIG
		ENVIRONMENTAL	--	CLASS LOCATION	CLASS 3 / DF = 0.5
		JURISDICTION	--	TEST PRESSURE	878 PSIG (MIN.) / 1000 PSIG (MAX)
		DEPTH OF COVER	4 FT MIN.	OPERATING PRESSURE	465 PSIG

LEGEND:

	PIPELINE		TEL. LINE		R.O.W.
	GAS PIPELINE		COMMUNICATION LINE		
	WATER LINE		OVERHEAD ELECTRIC LINE		

STATE HIGHWAY
CR COUNTY ROAD

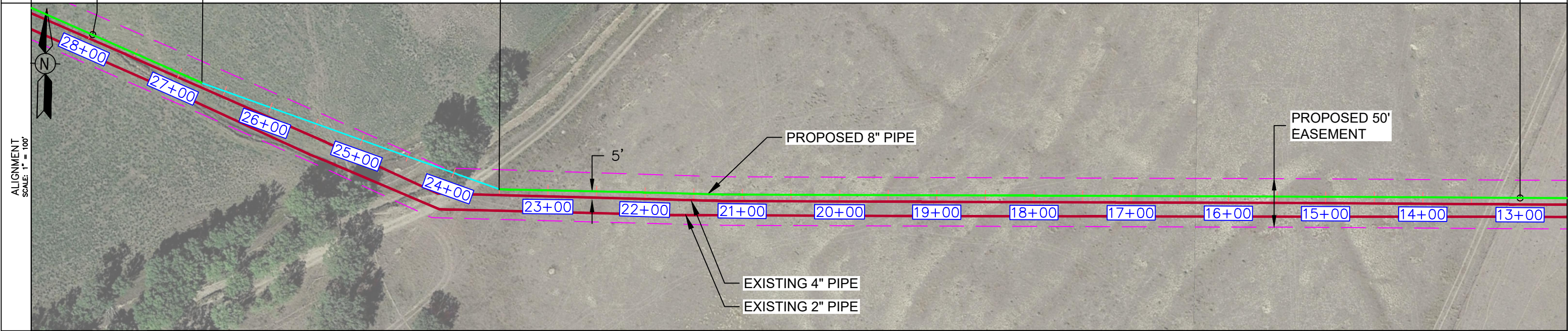
HORIZONTAL STATIONING

MATCH LINE STA: 28+00 SEE DWG. 0322-3303

FOUNTAIN DITCH HDD STA: 26+75

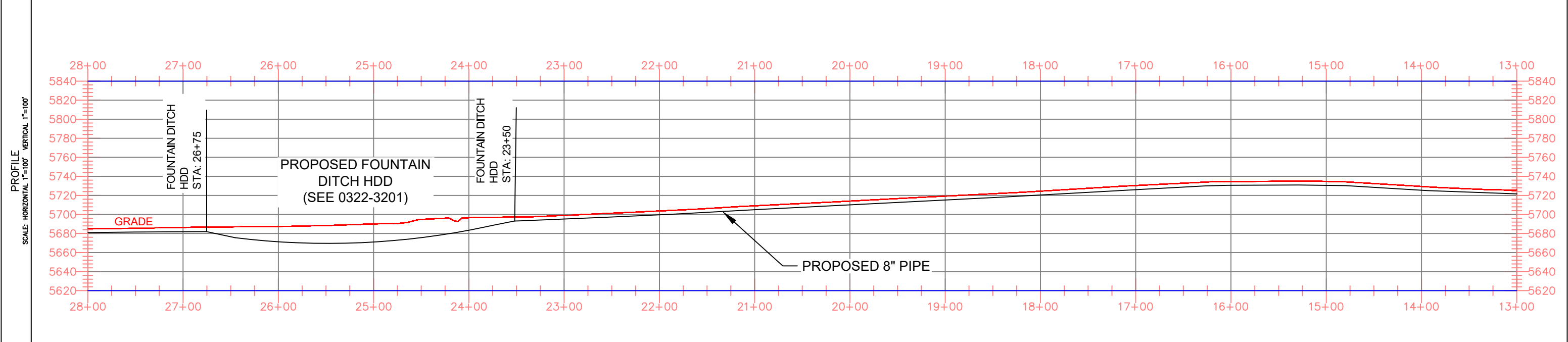
FOUNTAIN DITCH HDD STA: 23+50

MATCH LINE STA: 13+00 SEE DWG. 0322-3301



MATERIAL

STA. 26+75	300' (2)	STA. 23+50	950' (1)	STA. 13+00
------------	----------	------------	----------	------------



- NOTES**
- STATIONING IS BASED ON HORIZONTAL DISTANCES.
 - ALL GAS, WATER AND UTILITY LINES SHOULD BE LOCATED PRIOR TO ANY EXCAVATING, DIGGING, OR TRENCHING ANYWHERE ON OR NEAR THIS SITE.
 - BHE ASSUMES NO RESPONSIBILITY FOR THE SPECIFIC LOCATION OF ANY BURIED GAS, WATER, OR UTILITY LINES THAT MAY BE PRESENT ON OR NEAR THIS SITE, NOR IS ANY LIABILITY ASSUMED FOR ANY LEGAL ACTION WHICH RESULTS FROM A DISCOVERY OF A GAS, WATER, OR UTILITY LINE IN ADDITION TO OR IN A DIFFERENT LOCATION THAN SHOWN ON THIS PLAN.
 - GROUND SURVEY PROVIDED BY (SURVEYOR), (MONTH), 20XX.
 - HORIZONTAL CONTROL IS BASED ON NAD83 COLORADO STATE PLANE SOUTH ZONE (0503). VERTICAL DATUM IS NAVD88 AND BASED ON AN OPUS SOLUTION UTILIZING GEOID 12B.

BILL OF MATERIALS

1	8.625" OD 0.250" WT API 5LS X52 W14-16 MILLS FBE COATING	1300'
2	8.625" OD 0.250" WT API 5LS X52 W14-16 MILLS FBE COATING AND 40 MILS ARO	300'

REVISIONS

NO.	DESCRIPTION	DATE	BY	CHK.	APPRVD
A	FOR REVIEW	9/21/23	SKS	DJ	CD
B	FOR REVIEW (REVISED)	10/24/23	SKS	DJ	CD
C	ISSUED FOR BID	12/1/23	SKS	DJ	CD
D	ISSUED FOR CONSTRUCTION	12/14/23	SKS	DJ	CD

Black Hills Energy

ENGINEERING DESIGN
760 ALEGRE DR.
FOUNTAIN, CO 80817

SQUIRREL CREEK
ALIGNMENT & BORE PROFILE SHEET
13+00 TO 28+00

EL PASO COUNTY COLORADO

2024 CONSTRUCTION WO: 10083285

DESIGNED IN ACCORDANCE WITH TITLE 49-PART 192 OF MINIMUM FEDERAL SAFETY STANDARDS AND OPTIC GUIDE FOR GAS TRANSMISSION AND DISTRIBUTION PIPING SYSTEMS, LATEST EDITION.

DRWN: SKS CHK. DR: DJ SCALE AS SHOWN DATE 9/8/23

DRAWING NUMBER: 0322-3302 SHEET NO. 3 of 20

ADDITIONAL INFORMATION



OWNERSHIP	--	MAOP	585 PSIG
ENVIRONMENTAL	--	CLASS LOCATION	CLASS 3 / DF = 0.5
JURISDICTION	--	TEST PRESSURE	878 PSIG (MIN.) / 1000 PSIG (MAX)
DEPTH OF COVER	4 FT MIN.	OPERATING PRESSURE	465 PSIG

LEGEND:

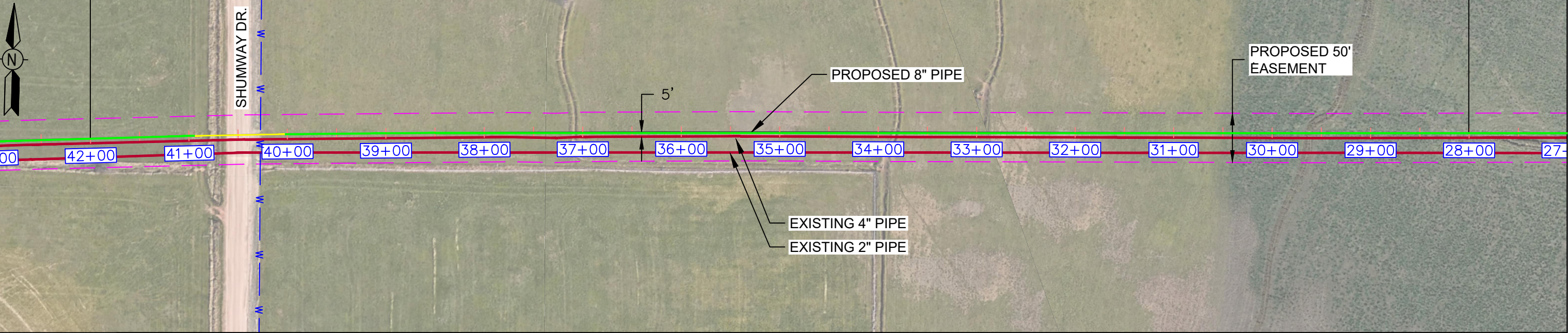
	PIPELINE		TEL. LINE		R.O.W.
	GAS PIPELINE		COMMUNICATION LINE		COUNTY ROAD
	WATER LINE		OVERHEAD ELECTRIC LINE		

HORIZONTAL STATIONING

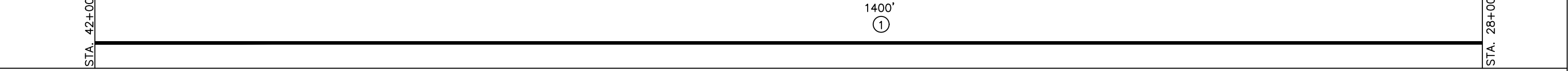
MATCH LINE STA: 42+00 SEE DWG. 0322-3304

MATCH LINE STA: 28+00 SEE DWG. 0322-3302

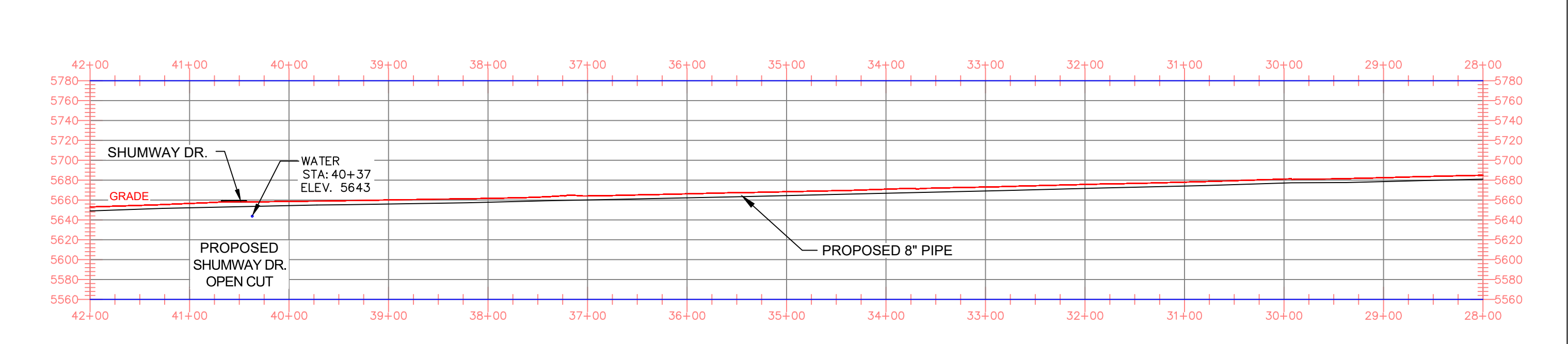
ALIGNMENT SCALE: 1" = 100'



MATERIAL



PROFILE SCALE: HORIZONTAL 1"=100' VERTICAL 1"=40'



NOTES

- STATIONING IS BASED ON HORIZONTAL DISTANCES.
- ALL GAS, WATER AND UTILITY LINES SHOULD BE LOCATED PRIOR TO ANY EXCAVATING, DIGGING, OR TRENCHING ANYWHERE ON OR NEAR THIS SITE.
- BHE ASSUMES NO RESPONSIBILITY FOR THE SPECIFIC LOCATION OF ANY BURIED GAS, WATER, OR UTILITY LINES THAT MAY BE PRESENT ON OR NEAR THIS SITE, NOR IS ANY LIABILITY ASSUMED FOR ANY LEGAL ACTION WHICH RESULTS FROM A DISCOVERY OF A GAS, WATER, OR UTILITY LINE IN ADDITION TO OR IN A DIFFERENT LOCATION THAN SHOW ON THIS PLAN.
- GROUND SURVEY PROVIDED BY (SURVEYOR), (MONTH), 20XX.
- HORIZONTAL CONTROL IS BASED ON NAD83 COLORADO STATE PLANE SOUTH ZONE (0503). VERTICAL DATUM IS NAVD88 AND BASED ON AN OPUS SOLUTION UTILIZING GEOID 12B.

BILL OF MATERIALS		
NO.	DESCRIPTION	QUANTITY
1	8.625" OD 0.250" WT API 5LS X52 W14-16 MILLS FBE COATING	1450'

REVISIONS						
NO.	DESCRIPTION	DATE	BY	CHK.	APPRVD.	
A	FOR REVIEW	9/21/23	SKS	DJ	CD	
B	FOR REVIEW (REVISED)	10/24/23	SKS	DJ	CD	
C	ISSUED FOR BID	12/1/23	SKS	DJ	CD	
D	ISSUED FOR CONSTRUCTION	12/14/23	SKS	DJ	CD	

ENGINEERING DESIGN
760 ALEGRE DR.
FOUNTAIN, CO 80817

2024 CONSTRUCTION

WO: 10083285

DESIGNED IN ACCORDANCE WITH TITLE 49-PART 192 OF MINIMUM FEDERAL SAFETY STANDARDS AND OPTIC GUIDE FOR GAS TRANSMISSION AND DISTRIBUTION PIPING SYSTEMS, LATEST EDITION.

SQUIRREL CREEK
ALIGNMENT & BORE PROFILE SHEET
28+00 TO 42+00

EL PASO COUNTY COLORADO

DRAWN SKS CHK. DR. DJ SCALE AS SHOWN DATE 9/8/23

DRAWING NUMBER: 0322-3303 SHEET NO. 4 of 20

ADDITIONAL INFORMATION



OWNERSHIP	--	MAOP	585 PSIG
ENVIRONMENTAL	--	CLASS LOCATION	CLASS 3 / DF = 0.5
JURISDICTION	--	TEST PRESSURE	878 PSIG (MIN.) / 1000 PSIG (MAX)
DEPTH OF COVER	4 FT MIN.	OPERATING PRESSURE	465 PSIG

LEGEND:

	PIPELINE		TEL. LINE		R.O.W.		DRAIN
	GAS PIPELINE		COMMUNICATION LINE		SEWER		
	WATER LINE		OVERHEAD ELECTRIC LINE		ELECT.		

HORIZONTAL STATIONING

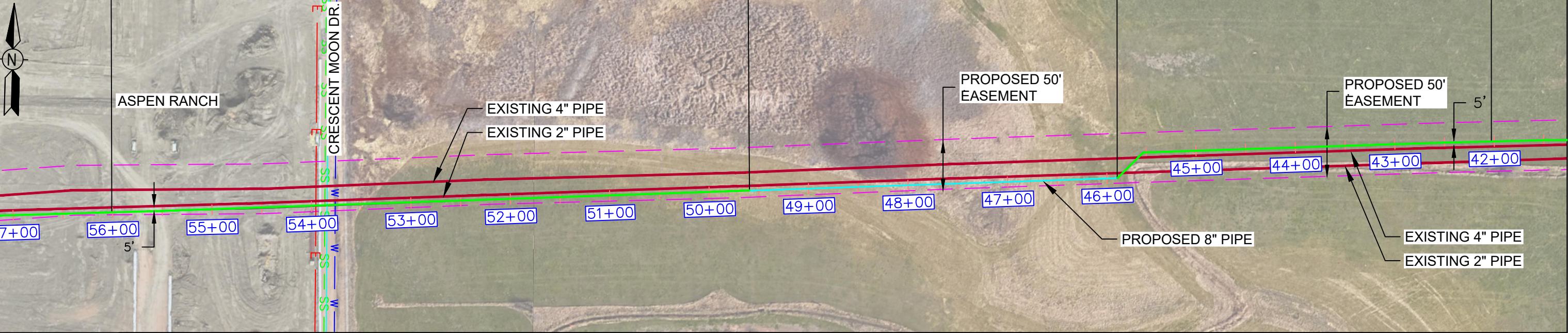
MATCH LINE STA: 56+00 SEE DWG. 0322-3304A

WETLANDS HDD STA: 49+50

WETLANDS HDD STA: 45+80

MATCH LINE STA: 42+00 SEE DWG. 0322-3303

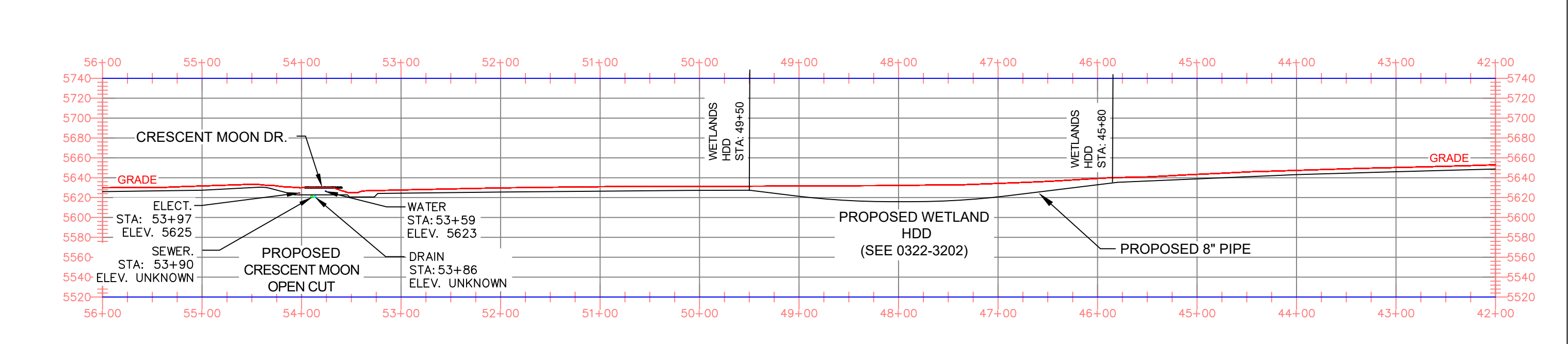
ALIGNMENT SCALE: 1" = 100'



MATERIAL



PROFILE SCALE: HORIZONTAL 1"=100' VERTICAL 1"=40'



NOTES

- STATIONING IS BASED ON HORIZONTAL DISTANCES.
- ALL GAS, WATER AND UTILITY LINES SHOULD BE LOCATED PRIOR TO ANY EXCAVATING, DIGGING, OR TRENCHING ANYWHERE ON OR NEAR THIS SITE.
- BHE ASSUMES NO RESPONSIBILITY FOR THE SPECIFIC LOCATION OF ANY BURIED GAS, WATER, OR UTILITY LINES THAT MAY BE PRESENT ON OR NEAR THIS SITE, NOR IS ANY LIABILITY ASSUMED FOR ANY LEGAL ACTION WHICH RESULTS FROM A DISCOVERY OF A GAS, WATER, OR UTILITY LINE IN ADDITION TO OR IN A DIFFERENT LOCATION THAN SHOWN ON THIS PLAN.
- GROUND SURVEY PROVIDED BY (SURVEYOR), (MONTH), 20XX.
- HORIZONTAL CONTROL IS BASED ON NAD83 COLORADO STATE PLANE SOUTH ZONE (0503). VERTICAL DATUM IS NAVD88 AND BASED ON AN OPUS SOLUTION UTILIZING GEOID 12B.

BILL OF MATERIALS		
1	8.625" OD 0.250" WT API 5LS X52 W14-16 MILLS FBE COATING	800'
2	8.625" OD 0.250" WT API 5LS X52 W14-16 MILLS FBE COATING AND 40 MILS ARO	650'

REVISIONS						
NO.	DESCRIPTION	DATE	BY	CHK.	APPRVD.	
A	FOR REVIEW	9/21/23	SKS	DJ	CD	
B	FOR REVIEW (REVISED)	10/24/23	SKS	DJ	CD	
C	ISSUED FOR BID	12/1/23	SKS	DJ	CD	
D	ISSUED FOR CONSTRUCTION	12/14/23	SKS	DJ	CD	

ENGINEERING DESIGN
760 ALEGRE DR.
FOUNTAIN, CO 80817

SQUIREL CREEK
ALIGNMENT & BORE PROFILE SHEET
42+00 TO 56+00

2024 CONSTRUCTION		WO: 10083285	EL PASO COUNTY	COLORADO
DWG. TYPE	PRELIM. BID FINAL	---	DRAWN SKS	CHK. DR. DJ
DESIGNED IN ACCORDANCE WITH TITLE 49-PART 192 OF MINIMUM FEDERAL SAFETY STANDARDS AND OPTIC GUIDE FOR GAS TRANSMISSION AND DISTRIBUTION PIPING SYSTEMS, LATEST EDITION.			SCALE AS SHOWN	DATE 9/8/23
			DRAWING NUMBER: 0322-3304	SHEET NO. 5 of 20

ADDITIONAL INFORMATION



OWNERSHIP	---	MAOP	585 PSIG
ENVIRONMENTAL	---	CLASS LOCATION	CLASS 3 / DF = 0.5
JURISDICTION	---	TEST PRESSURE	878 PSIG (MIN.) / 1000 PSIG (MAX)
DEPTH OF COVER	4 FT MIN.	OPERATING PRESSURE	465 PSIG

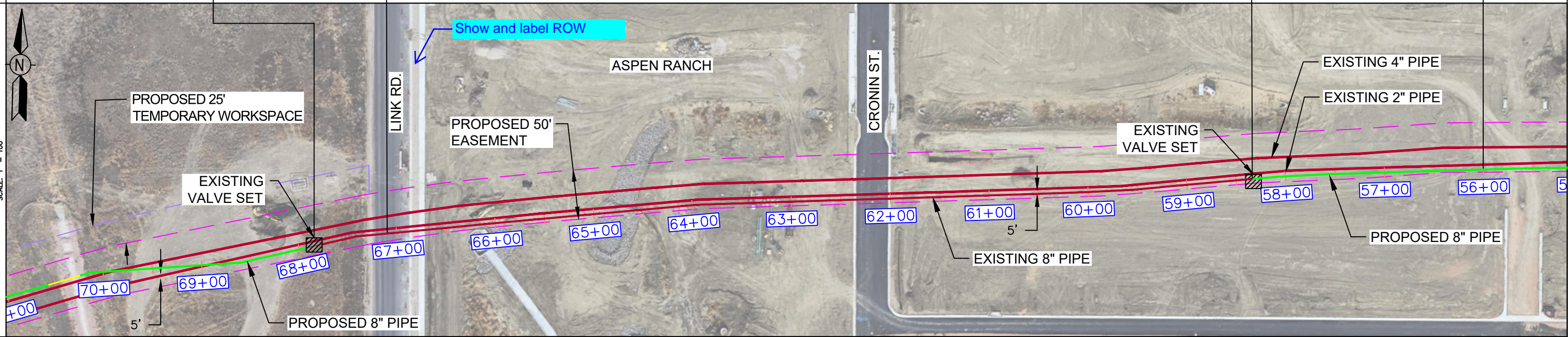
LEGEND:

	PIPELINE		TEL. LINE		R.O.W.	STATE HIGHWAY
	GAS PIPELINE		COMMUNICATION LINE		OVERHEAD ELECTRIC LINE	CR COUNTY ROAD
	WATER LINE					

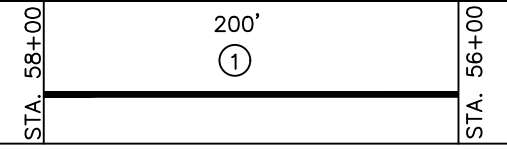
HORIZONTAL STATIONING



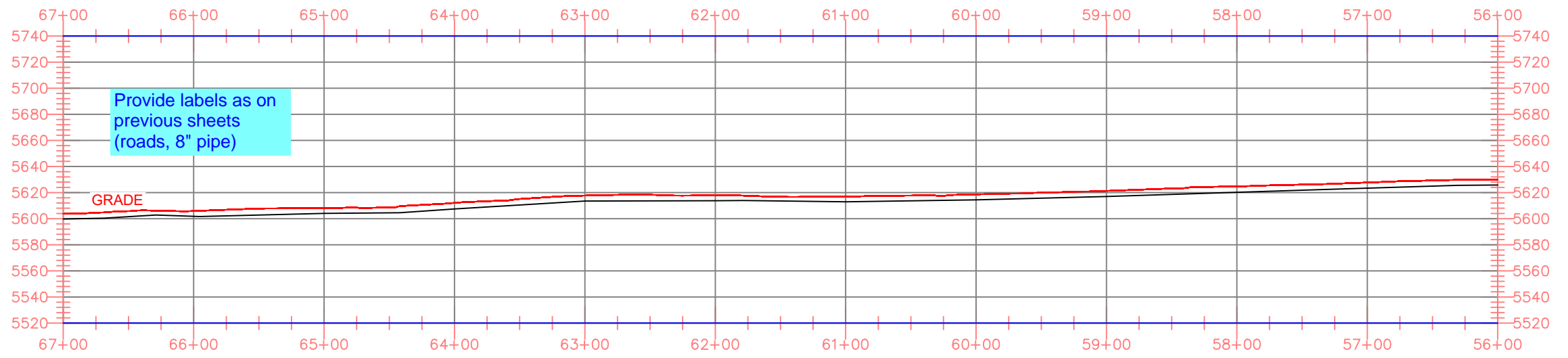
ALIGNMENT SCALE: 1" = 100'



MATERIAL



PROFILE SCALE: HORIZONTAL 1"=100' VERTICAL 1"=40'



NOTES

- STATIONING IS BASED ON HORIZONTAL DISTANCES.
- ALL GAS, WATER AND UTILITY LINES SHOULD BE LOCATED PRIOR TO ANY EXCAVATING, DIGGING, OR TRENCHING ANYWHERE ON OR NEAR THIS SITE.
- BHE ASSUMES NO RESPONSIBILITY FOR THE SPECIFIC LOCATION OF ANY BURIED GAS, WATER, OR UTILITY LINES THAT MAY BE PRESENT ON OR NEAR THIS SITE, NOR IS ANY LIABILITY ASSUMED FOR ANY LEGAL ACTION WHICH RESULTS FROM A DISCOVERY OF A GAS, WATER, OR UTILITY LINE IN ADDITION TO OR IN A DIFFERENT LOCATION THAN SHOW ON THIS PLAN.
- GROUND SURVEY PROVIDED BY (SURVEYOR), (MONTH), 20XX.
- HORIZONTAL CONTROL IS BASED ON NAD83 COLORADO STATE PLANE SOUTH ZONE (0503). VERTICAL DATUM IS NAVD88 AND BASED ON AN OPUS SOLUTION UTILIZING GEOID 12B.

BILL OF MATERIALS		
NO.	DESCRIPTION	QUANTITY
1	8.625" OD 0.250" WT API 5LS X52 W14-16 MILLS FBE COATING	250'

REVISIONS						
NO.	DESCRIPTION	DATE	BY	CHK.	APPRVD	
A	FOR REVIEW	9/21/23	SKS	DJ	CD	
B	FOR REVIEW (REVISED)	10/24/23	SKS	DJ	CD	
C	ISSUED FOR BID	12/1/23	SKS	DJ	CD	
D	ISSUED FOR CONSTRUCTION	12/14/23	SKS	DJ	CD	

ENGINEERING DESIGN
760 ALEGRE DR.
FOUNTAIN, CO 80817

2024 CONSTRUCTION

WO: 10083285

DESIGNED IN ACCORDANCE WITH TITLE 49-PART 192 OF MINIMUM FEDERAL SAFETY STANDARDS AND GPIC GUIDE FOR GAS TRANSMISSION AND DISTRIBUTION PIPING SYSTEMS, LATEST EDITION.

SQUIREL CREEK
ALIGNMENT & BORE PROFILE SHEET
56+00 TO 67+00

EL PASO COUNTY COLORADO

SCALE AS SHOWN DATE 9/8/23

SHEET NO. 6 of 20

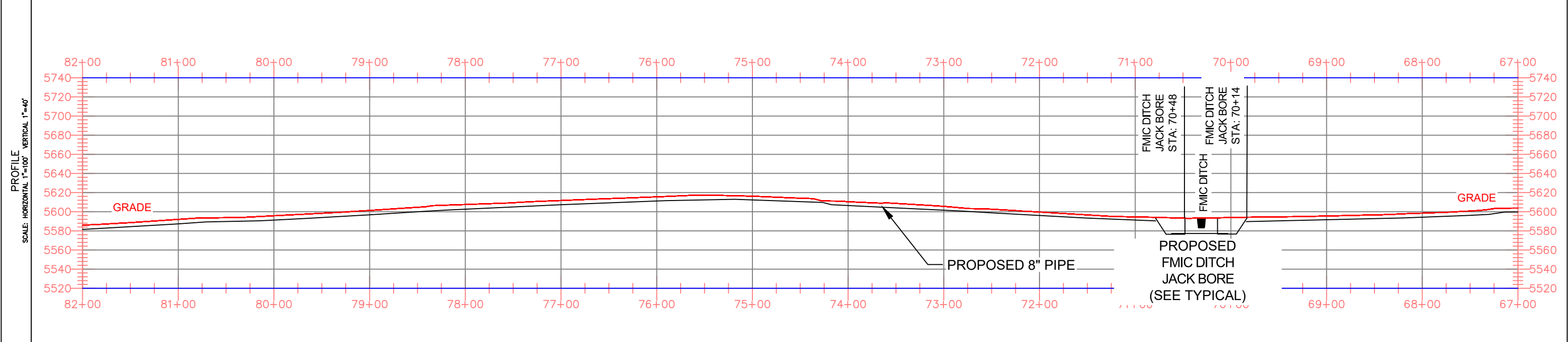
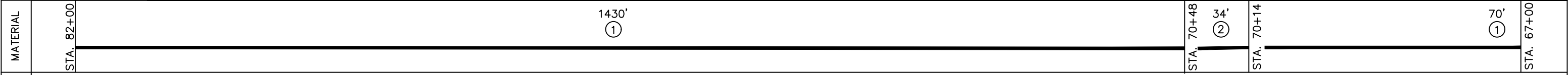
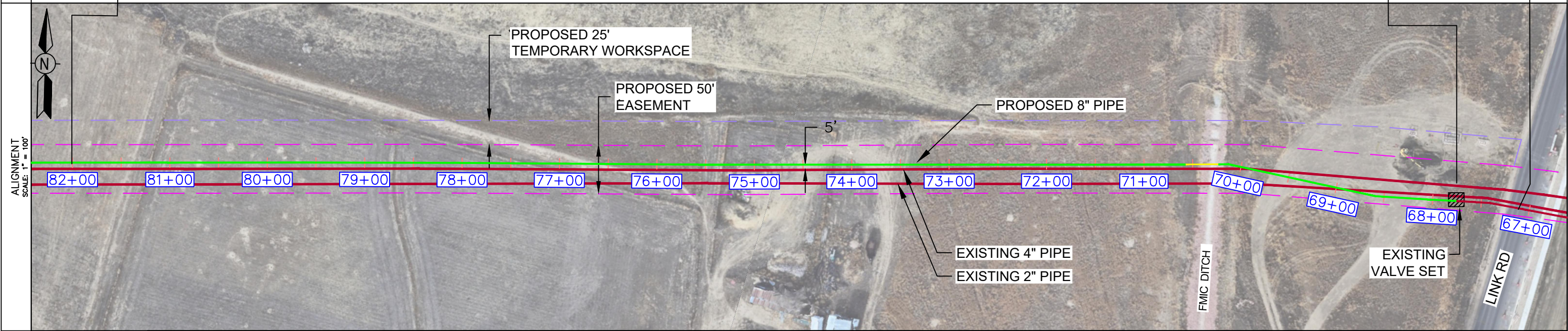
ADDITIONAL INFORMATION	OWNERSHIP	--	MAOP	585 PSIG
	ENVIRONMENTAL	--	CLASS LOCATION	CLASS 3 / DF = 0.5
	JURISDICTION	--	TEST PRESSURE	878 PSIG (MIN.) / 1000 PSIG (MAX)
	DEPTH OF COVER	4 FT MIN.	OPERATING PRESSURE	465 PSIG



LEGEND:	PIPELINE	TEL. LINE	R.O.W.	STATE HIGHWAY
	GAS PIPELINE	COMMUNICATION LINE		CR COUNTY ROAD
	WATER LINE	OVERHEAD ELECTRIC LINE		

HORIZONTAL STATIONING: MATCH LINE STA: 82+00 SEE DWG. 0322-3306 (left); MATCH LINE STA: 67+00 SEE DWG. 0322-3306 (right)

NEW EXISTING



NOTES:

- STATIONING IS BASED ON HORIZONTAL DISTANCES.
- ALL GAS, WATER AND UTILITY LINES SHOULD BE LOCATED PRIOR TO ANY EXCAVATING, DIGGING, OR TRENCHING ANYWHERE ON OR NEAR THIS SITE.
- BHE ASSUMES NO RESPONSIBILITY FOR THE SPECIFIC LOCATION OF ANY BURIED GAS, WATER, OR UTILITY LINES THAT MAY BE PRESENT ON OR NEAR THIS SITE, NOR IS ANY LIABILITY ASSUMED FOR ANY LEGAL ACTION WHICH RESULTS FROM A DISCOVERY OF A GAS, WATER, OR UTILITY LINE IN ADDITION TO OR IN A DIFFERENT LOCATION THAN SHOW ON THIS PLAN.
- GROUND SURVEY PROVIDED BY (SURVEYOR), (MONTH), 20XX.
- HORIZONTAL CONTROL IS BASED ON NAD83 COLORADO STATE PLANE SOUTH ZONE (0503). VERTICAL DATUM IS NAVD88 AND BASED ON AN OPUS SOLUTION UTILIZING GEOID 12B.

BILL OF MATERIALS		
1	8.625" OD 0.250" WT API 5LS X52 W14-16 MILLS FBE COATING	1550'
2	8.625" OD 0.250" WT API 5LS X52 W14-16 MILLS FBE COATING AND 40 MILS ARO	350'

REVISIONS						
A	FOR REVIEW	9/21/23	SKS	DJ	CD	APPROVD
B	FOR REVIEW (REVISED)	10/24/23	SKS	DJ	CD	
C	ISSUED FOR BID	12/1/23	SKS	DJ	CD	
D	ISSUED FOR CONSTRUCTION	12/14/23	SKS	DJ	CD	

ENGINEERING DESIGN
760 ALEGRE DR.
FOUNTAIN, CO 80817

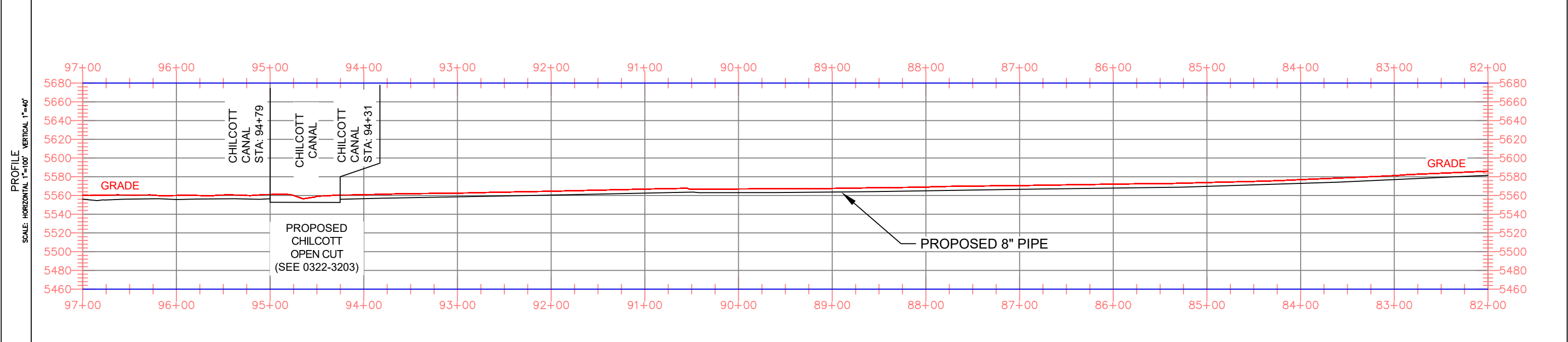
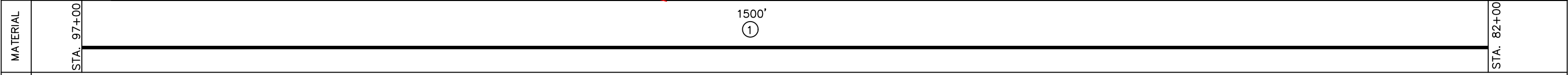
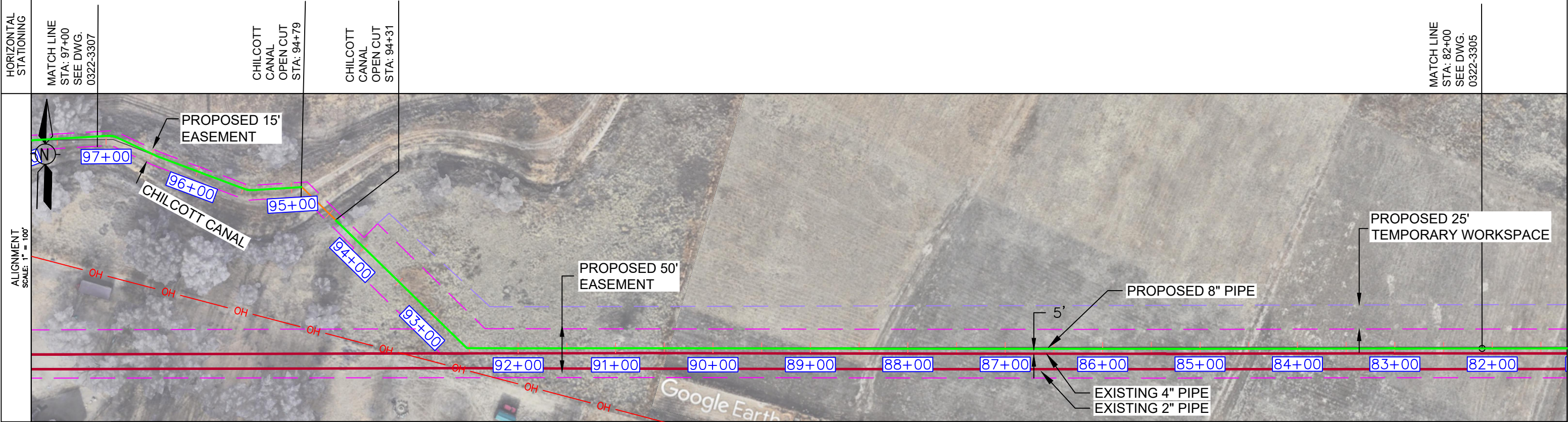
SQUIREL CREEK
ALIGNMENT & BORE PROFILE SHEET
67+00 TO 82+00

2024 CONSTRUCTION		WO: 10083285	EL PASO COUNTY	COLORADO
DWG. TYPE	PRELIM	BID	FINAL	
DESIGNED IN ACCORDANCE WITH TITLE 49-PART 192 OF MINIMUM FEDERAL SAFETY STANDARDS AND GPIC GUIDE FOR GAS TRANSMISSION AND DISTRIBUTION PIPING SYSTEMS, LATEST EDITION.	DRAWN: SKS		CHK. DR: DJ	SCALE AS SHOWN DATE 9/8/23
DRAWING NUMBER: 0322-3305			SHEET NO. 7 of 20	

ADDITIONAL INFORMATION	OWNERSHIP	--	MAOP	585 PSIG
	ENVIRONMENTAL	--	CLASS LOCATION	CLASS 3 / DF = 0.5
	JURISDICTION	--	TEST PRESSURE	878 PSIG (MIN.) / 1000 PSIG (MAX)
	DEPTH OF COVER	4 FT MIN.	OPERATING PRESSURE	465 PSIG



LEGEND:		PIPELINE	TEL. LINE	R.O.W.	STATE HIGHWAY
GAS PIPELINE	COMMUNICATION LINE	OVERHEAD ELECTRIC LINE		CR	COUNTY ROAD
WATER LINE					



NOTES

- STATIONING IS BASED ON HORIZONTAL DISTANCES.
- ALL GAS, WATER AND UTILITY LINES SHOULD BE LOCATED PRIOR TO ANY EXCAVATING, DIGGING, OR TRENCHING ANYWHERE ON OR NEAR THIS SITE.
- BHE ASSUMES NO RESPONSIBILITY FOR THE SPECIFIC LOCATION OF ANY BURIED GAS, WATER, OR UTILITY LINES THAT MAY BE PRESENT ON OR NEAR THIS SITE, NOR IS ANY LIABILITY ASSUMED FOR ANY LEGAL ACTION WHICH RESULTS FROM A DISCOVERY OF A GAS, WATER, OR UTILITY LINE IN ADDITION TO OR IN A DIFFERENT LOCATION THAN SHOW ON THIS PLAN.
- GROUND SURVEY PROVIDED BY (SURVEYOR), (MONTH), 20XX.
- HORIZONTAL CONTROL IS BASED ON NAD83 COLORADO STATE PLANE SOUTH ZONE (0503). VERTICAL DATUM IS NAVD88 AND BASED ON AN OPUS SOLUTION UTILIZING GEOID 12B.

BILL OF MATERIALS		
NO.	DESCRIPTION	QUANTITY
1	8.625" OD 0.250" WT API 5LS X52 W14-16 MILLS FBE COATING	1500'

REVISIONS						
NO.	DESCRIPTION	DATE	BY	CHK.	APPRVD	
A	FOR REVIEW	9/21/23	SKS	DJ	CD	
B	FOR REVIEW (REVISED)	10/24/23	SKS	DJ	CD	
C	ISSUED FOR BID	12/1/23	SKS	DJ	CD	
D	ISSUED FOR CONSTRUCTION	12/14/23	SKS	DJ	CD	

ENGINEERING DESIGN
760 ALEGRE DR.
FOUNTAIN, CO 80817

SQUIREL CREEK
ALIGNMENT & BORE PROFILE SHEET
82+00 TO 97+00

2024 CONSTRUCTION		WO: 10083285	EL PASO COUNTY	COLORADO
DWG. TYPE	PRELIM. BID FINAL	DESIGNED IN ACCORDANCE WITH TITLE 49-PART 192 OF MINIMUM FEDERAL SAFETY STANDARDS AND OPTIC GUIDE FOR GAS TRANSMISSION AND DISTRIBUTION PIPING SYSTEMS, LATEST EDITION.	DRAWN	SCALE AS SHOWN
			SKS	DATE 9/8/23
			DJ	SHEET NO.
			0322-3306	8 of 20

ADDITIONAL INFORMATION



OWNERSHIP	---	MAOP	585 PSIG
ENVIRONMENTAL	---	CLASS LOCATION	CLASS 3 / DF = 0.5
JURISDICTION	---	TEST PRESSURE	878 PSIG (MIN.) / 1000 PSIG (MAX)
DEPTH OF COVER	4 FT MIN.	OPERATING PRESSURE	465 PSIG

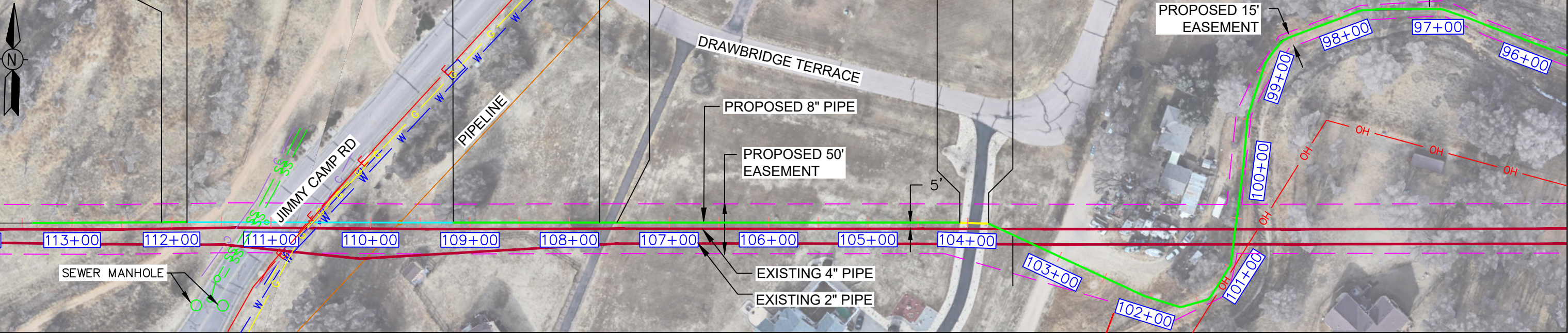
LEGEND:

	PIPELINE		TEL. LINE		SEWER
	GAS PIPELINE		COMMUNICATION LINE		ELECT.
	WATER LINE		OVERHEAD ELECTRIC LINE		R.O.W.

HORIZONTAL STATIONING

MATCH LINE STA: 112+00 SEE DWG. 0322-3308	JIMMY CAMP RD HDD STA: 111+74	JIMMY CAMP RD HDD STA: 109+07	PRIVATE DRWY STA: 107+35	PRIVATE DRWY STA: 107+18	PRIVATE PROP JACK BORE STA: 103+98	PRIVATE PROP JACK BORE STA: 103+68	MATCH LINE STA: 97+00 SEE DWG. 0322-3306
-------------------------------------------	-------------------------------	-------------------------------	--------------------------	--------------------------	------------------------------------	------------------------------------	------------------------------------------

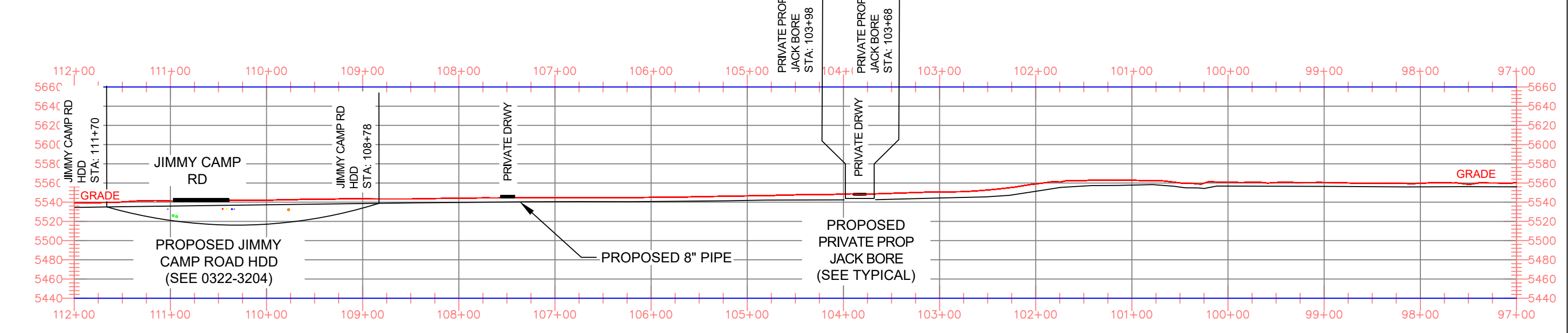
ALIGNMENT SCALE: 1" = 100'



MATERIAL

STA. 112+00	30' (1)	288' (2)	450' (1)	30' (2)	304' (1)	STA. 97+00
-------------	---------	----------	----------	---------	----------	------------

PROFILE SCALE: HORIZONTAL 1"=100' VERTICAL 1"=40'



NOTES

- STATIONING IS BASED ON HORIZONTAL DISTANCES.
- ALL GAS, WATER AND UTILITY LINES SHOULD BE LOCATED PRIOR TO ANY EXCAVATING, DIGGING, OR TRENCHING ANYWHERE ON OR NEAR THIS SITE.
- BHE ASSUMES NO RESPONSIBILITY FOR THE SPECIFIC LOCATION OF ANY BURIED GAS, WATER, OR UTILITY LINES THAT MAY BE PRESENT ON OR NEAR THIS SITE, NOR IS ANY LIABILITY ASSUMED FOR ANY LEGAL ACTION WHICH RESULTS FROM A DISCOVERY OF A GAS, WATER, OR UTILITY LINE IN ADDITION TO OR IN A DIFFERENT LOCATION THAN SHOW ON THIS PLAN.
- GROUND SURVEY PROVIDED BY (SURVEYOR), (MONTH), 20XX.
- HORIZONTAL CONTROL IS BASED ON NAD83 COLORADO STATE PLANE SOUTH ZONE (0503). VERTICAL DATUM IS NAVD88 AND BASED ON AN OPUS SOLUTION UTILIZING GEOID 12B.

1	8.625" OD 0.250" WT API 5LS X52 W14-16 MILLS FBE COATING	1425'
2	8.625" OD 0.250" WT API 5LS X52 W14-16 MILLS FBE COATING AND 40 MILS ARO	245'

NO.	DESCRIPTION	DATE	BY	CHK.	APPRVD
A	FOR REVIEW	9/21/23	SKS	DJ	CD
B	FOR REVIEW (REVISED)	10/24/23	SKS	DJ	CD
C	ISSUED FOR BID	12/1/23	SKS	DJ	CD
D	ISSUED FOR CONSTRUCTION	12/14/23	SKS	DJ	CD

ENGINEERING DESIGN
760 ALEGRE DR.
FOUNTAIN, CO 80817

**SQUIREL CREEK
ALIGNMENT SHEET
97+00 TO 112+00**

2024 CONSTRUCTION		WO: 10083285	EL PASO COUNTY	COLORADO
DRWN: SKS	CHK. DR: DJ	SCALE: AS SHOWN	DATE: 9/8/23	
DESIGNED IN ACCORDANCE WITH TITLE 49-PART 192 OF MINIMUM FEDERAL SAFETY STANDARDS AND OPTIC GUIDE FOR GAS TRANSMISSION AND DISTRIBUTION PIPING SYSTEMS, LATEST EDITION.		DRAWING NUMBER: 0322-3307	SHEET NO. 9 of 20	

ADDITIONAL INFORMATION



OWNERSHIP	---	MAOP	585 PSIG
ENVIRONMENTAL	---	CLASS LOCATION	CLASS 3 / DF = 0.5
JURISDICTION	---	TEST PRESSURE	878 PSIG (MIN.) / 1000 PSIG (MAX)
DEPTH OF COVER	4 FT MIN.	OPERATING PRESSURE	465 PSIG

LEGEND:

	PIPELINE		TEL. LINE		R.O.W.
	GAS PIPELINE		COMMUNICATION LINE		OVERHEAD ELECTRIC LINE
	WATER LINE				

STATE HIGHWAY
CR COUNTY ROAD

HORIZONTAL STATIONING

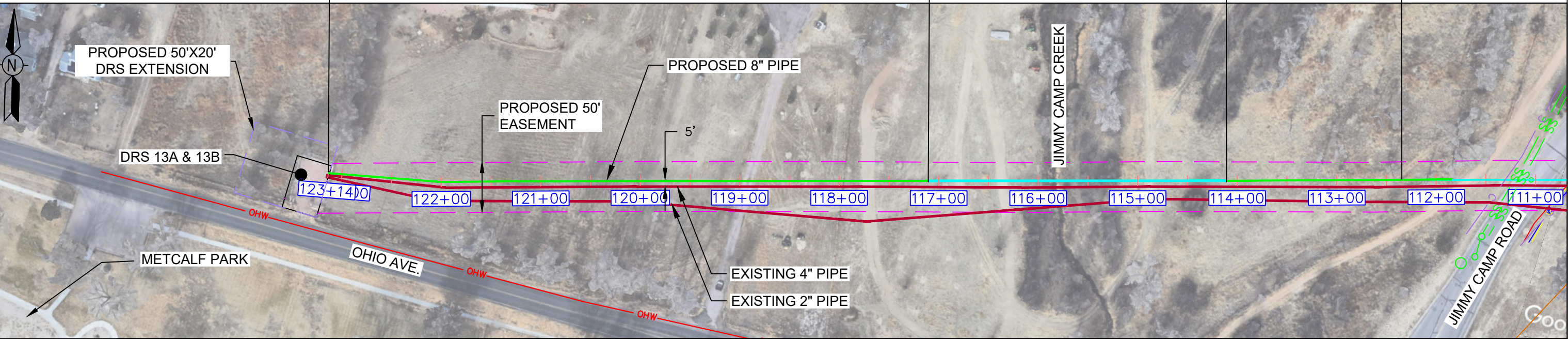
LINE END STA: 122+75

JIMMY CAMP CREEK HDD STA: 117+00

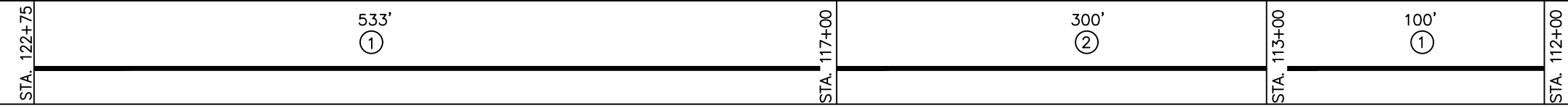
JIMMY CAMP CREEK HDD STA: 114+00

MATCH LINE STA: 112+00 SEE DWG. 0322-3307

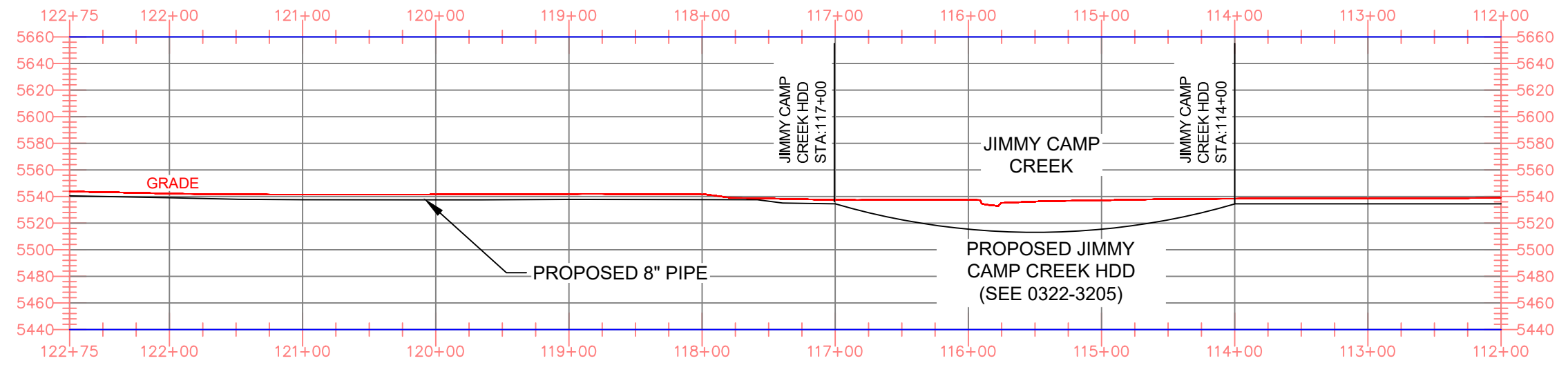
ALIGNMENT SCALE: 1" = 100'



MATERIAL



PROFILE SCALE: HORIZONTAL 1"=100' VERTICAL 1"=40'



NOTES

- STATIONING IS BASED ON HORIZONTAL DISTANCES.
- ALL GAS, WATER AND UTILITY LINES SHOULD BE LOCATED PRIOR TO ANY EXCAVATING, DIGGING, OR TRENCHING ANYWHERE ON OR NEAR THIS SITE.
- BHE ASSUMES NO RESPONSIBILITY FOR THE SPECIFIC LOCATION OF ANY BURIED GAS, WATER, OR UTILITY LINES THAT MAY BE PRESENT ON OR NEAR THIS SITE, NOR IS ANY LIABILITY ASSUMED FOR ANY LEGAL ACTION WHICH RESULTS FROM A DISCOVERY OF A GAS, WATER, OR UTILITY LINE IN ADDITION TO OR IN A DIFFERENT LOCATION THAN SHOW ON THIS PLAN.
- GROUND SURVEY PROVIDED BY (SURVEYOR), (MONTH), 20XX.
- HORIZONTAL CONTROL IS BASED ON NAD83 COLORADO STATE PLANE SOUTH ZONE (0503). VERTICAL DATUM IS NAVD88 AND BASED ON AN OPUS SOLUTION UTILIZING GEOID 12B.

BILL OF MATERIALS

1	8.625" OD 0.250" WT API 5LS X52 W14-16 MILLS FBE COATING	650'
2	8.625" OD 0.250" WT API 5LS X52 W14-16 MILLS FBE COATING AND 40 MILS ARO	325'

REVISIONS

NO.	DESCRIPTION	DATE	BY	CHK.	APPRVD
A	FOR REVIEW	9/21/23	SKS	DJ	CD
B	FOR REVIEW (REVISED)	10/24/23	SKS	DJ	CD
C	ISSUED FOR BID	12/1/23	SKS	DJ	CD
D	ISSUED FOR CONSTRUCTION	12/14/23	SKS	DJ	CD



ENGINEERING DESIGN
760 ALEGRE DR.
FOUNTAIN, CO 80817

SQUIRREL CREEK
ALIGNMENT & BORE PROFILE SHEET
112+00 TO 122+40

2024 CONSTRUCTION

WO: 10083285

EL PASO COUNTY COLORADO

DWG. TYPE: PRELIM. BID FINAL

DESIGNED IN ACCORDANCE WITH TITLE 49-PART 192 OF MINIMUM FEDERAL SAFETY STANDARDS AND GPIC GUIDE FOR GAS TRANSMISSION AND DISTRIBUTION PIPING SYSTEMS, LATEST EDITION.

DRAWN: SKS CHK. DR. DJ SCALE AS SHOWN DATE 9/8/23 SHEET NO. 10 of 20

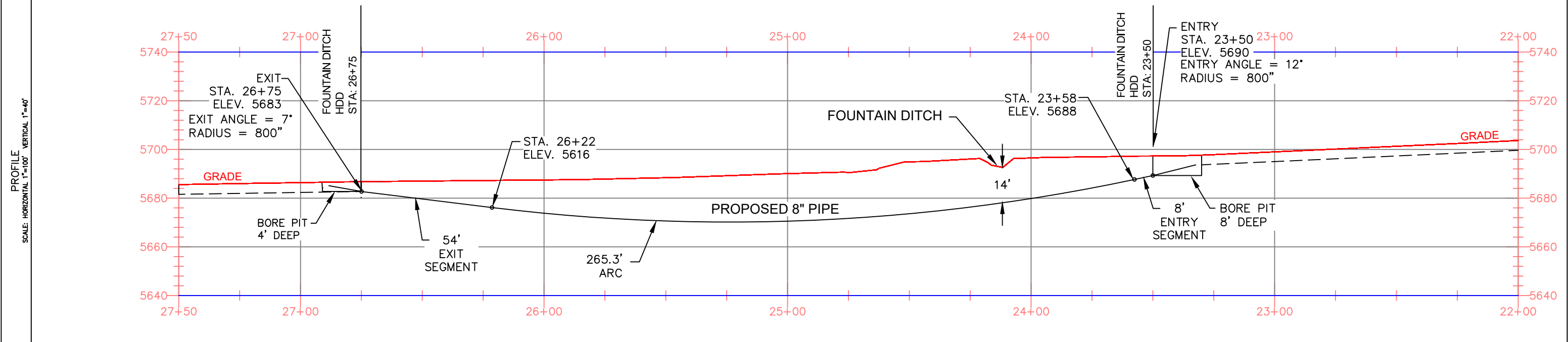
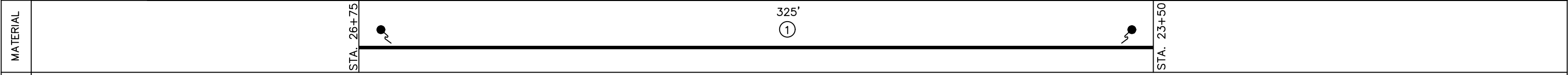
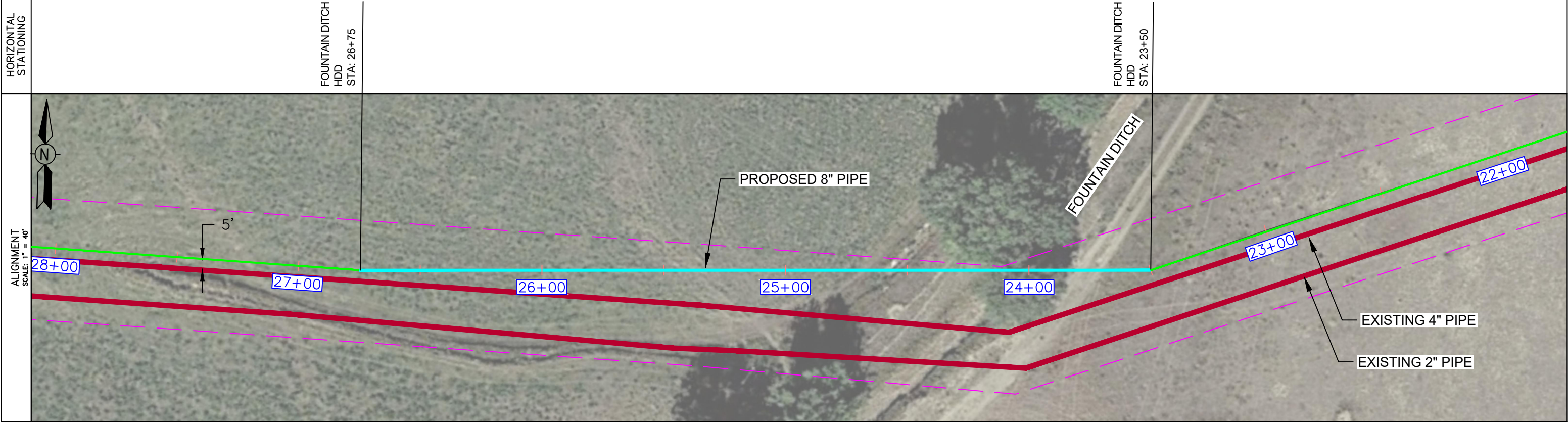
DRAWING NUMBER: 0322-3308



OWNERSHIP	---	MAOP	585 PSIG
ENVIRONMENTAL	---	CLASS LOCATION	CLASS 3 / DF = 0.5
JURISDICTION	---	TEST PRESSURE	878 PSIG (MIN.) / 1000 PSIG (MAX)
DEPTH OF COVER	4 FT MIN.	OPERATING PRESSURE	465 PSIG

LEGEND:

	PIPELINE		TEL. LINE		SEWER
	GAS PIPELINE		COMMUNICATION LINE		ELECT.
	WATER LINE		OVERHEAD ELECTRIC LINE		R.O.W.



NOTES

- STATIONING IS BASED ON HORIZONTAL DISTANCES.
- ALL GAS, WATER AND UTILITY LINES SHOULD BE LOCATED PRIOR TO ANY EXCAVATING, DIGGING, OR TRENCHING ANYWHERE ON OR NEAR THIS SITE.
- BHE ASSUMES NO RESPONSIBILITY FOR THE SPECIFIC LOCATION OF ANY BURIED GAS, WATER, OR UTILITY LINES THAT MAY BE PRESENT ON OR NEAR THIS SITE, NOR IS ANY LIABILITY ASSUMED FOR ANY LEGAL ACTION WHICH RESULTS FROM A DISCOVERY OF A GAS, WATER, OR UTILITY LINE IN ADDITION TO OR IN A DIFFERENT LOCATION THAN SHOW ON THIS PLAN.
- GROUND SURVEY PROVIDED BY (SURVEYOR), (MONTH), 20XX.
- HORIZONTAL CONTROL IS BASED ON NAD83 COLORADO STATE PLANE SOUTH ZONE (0503). VERTICAL DATUM IS NAVD88 AND BASED ON AN OPUS SOLUTION UTILIZING GEOID 12B.

BILL OF MATERIALS

1	8.625" OD 0.250" WT API 5LS X52 W14-16 MILLS FBE COATING AND 40 MILS ARO	350'
---	--------------------------------------------------------------------------	------

REVISIONS

NO.	DESCRIPTION	DATE	BY	CHK.	APPRVD
A	FOR REVIEW	9/21/23	SKS	DJ	CD
B	FOR REVIEW (REVISED)	10/24/23	SKS	DJ	CD
C	ISSUED FOR BID	12/1/23	SKS	DJ	CD
D	ISSUED FOR CONSTRUCTION	12/14/23	SKS	DJ	CD

ENGINEERING DESIGN
760 ALEGRE DR.
FOUNTAIN, CO 80817

2024 CONSTRUCTION

WO: 10083285

DESIGNED IN ACCORDANCE WITH TITLE 49-PART 192 OF MINIMUM FEDERAL SAFETY STANDARDS AND GPIC GUIDE FOR GAS TRANSMISSION AND DISTRIBUTION PIPING SYSTEMS, LATEST EDITION.

**SQUIRREL CREEK
BORE PROFILE SHEET
FOUNTAIN DITCH**

EL PASO COUNTY COLORADO

DRAWN SKS CHK. DR. DJ SCALE AS SHOWN DATE 9/8/23

DRAWING NUMBER: 0322-3201 SHEET NO. 11 of 20

ADDITIONAL INFORMATION



OWNERSHIP	--	MAOP	585 PSIG
ENVIRONMENTAL	--	CLASS LOCATION	CLASS 3 / DF = 0.5
JURISDICTION	--	TEST PRESSURE	878 PSIG (MIN.) / 1000 PSIG (MAX)
DEPTH OF COVER	4 FT MIN.	OPERATING PRESSURE	465 PSIG

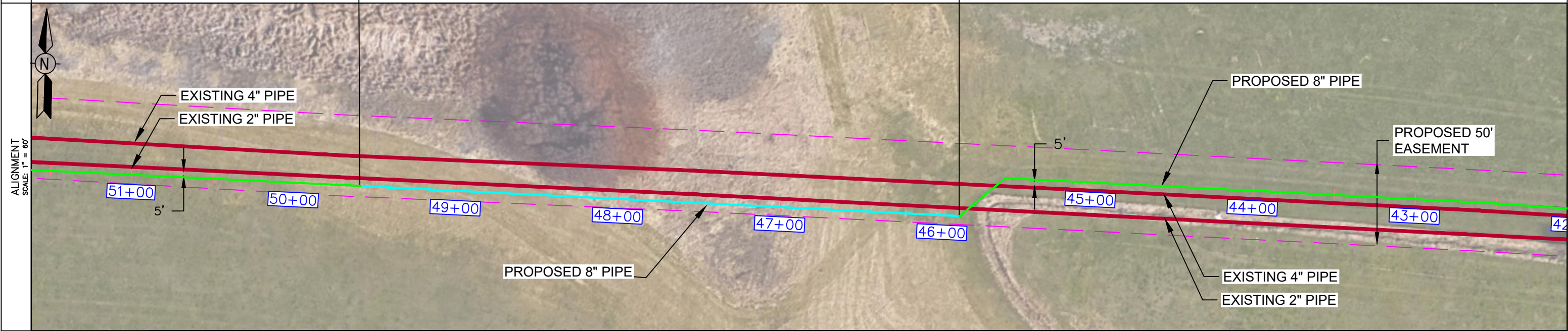
LEGEND:

	PIPELINE		TEL. LINE		SEWER
	GAS PIPELINE		COMMUNICATION LINE		ELECT.
	WATER LINE		OVERHEAD ELECTRIC LINE		R.O.W.

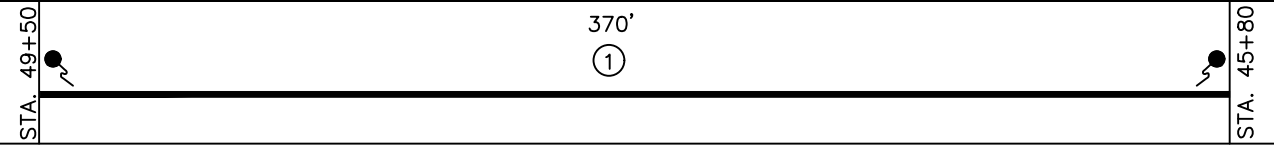
HORIZONTAL STATIONING

WETLANDS HDD STA: 49+50

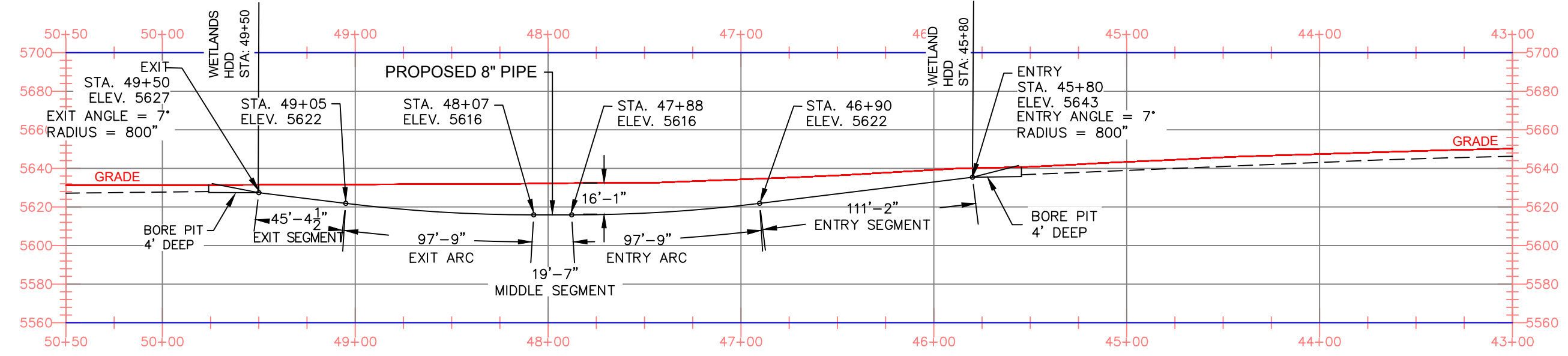
WETLANDS HDD STA: 45+80



MATERIAL



PROFILE SCALE: HORIZONTAL 1"=100' VERTICAL 1"=60'



NOTES

- STATIONING IS BASED ON HORIZONTAL DISTANCES.
- ALL GAS, WATER AND UTILITY LINES SHOULD BE LOCATED PRIOR TO ANY EXCAVATING, DIGGING, OR TRENCHING ANYWHERE ON OR NEAR THIS SITE.
- BHE ASSUMES NO RESPONSIBILITY FOR THE SPECIFIC LOCATION OF ANY BURIED GAS, WATER, OR UTILITY LINES THAT MAY BE PRESENT ON OR NEAR THIS SITE, NOR IS ANY LIABILITY ASSUMED FOR ANY LEGAL ACTION WHICH RESULTS FROM A DISCOVERY OF A GAS, WATER, OR UTILITY LINE IN ADDITION TO OR IN A DIFFERENT LOCATION THAN SHOWN ON THIS PLAN.
- GROUND SURVEY PROVIDED BY (SURVEYOR), (MONTH), 20XX.
- HORIZONTAL CONTROL IS BASED ON NAD83 COLORADO STATE PLANE SOUTH ZONE (0503). VERTICAL DATUM IS NAVD88 AND BASED ON AN OPUS SOLUTION UTILIZING GEOID 12B.

BILL OF MATERIALS		
1	8.625" OD 0.250" WT API 5LS X52 W14-16 MILLS FBE COATING AND 40 MILS ARO	600'

REVISIONS						
NO.	DESCRIPTION	DATE	BY	CHK.	APPRVD	
A	FOR REVIEW	9/21/23	SKS	DJ	CD	
B	FOR REVIEW (REVISED)	10/24/23	SKS	DJ	CD	
C	ISSUED FOR BID	12/1/23	SKS	DJ	CD	
D	ISSUED FOR CONSTRUCTION	12/14/23	SKS	DJ	CD	

ENGINEERING DESIGN
760 ALEGRE DR.
FOUNTAIN, CO 80817

2024 CONSTRUCTION

WO: 10083285

DESIGNED IN ACCORDANCE WITH TITLE 49-PART 192 OF MINIMUM FEDERAL SAFETY STANDARDS AND GPIC GUIDE FOR GAS TRANSMISSION AND DISTRIBUTION PIPING SYSTEMS, LATEST EDITION.

SQUIRREL CREEK
BORE PROFILE SHEET
WETLANDS HDD

EL PASO COUNTY COLORADO

SCALE AS SHOWN DATE 9/8/23

SHEET NO. 12 of 20

ADDITIONAL INFORMATION



OWNERSHIP	--	MAOP	585 PSIG
ENVIRONMENTAL	--	CLASS LOCATION	CLASS 3 / DF = 0.5
JURISDICTION	--	TEST PRESSURE	878 PSIG (MIN.) / 1000 PSIG (MAX)
DEPTH OF COVER	6 FT MIN.	OPERATING PRESSURE	465 PSIG

LEGEND:

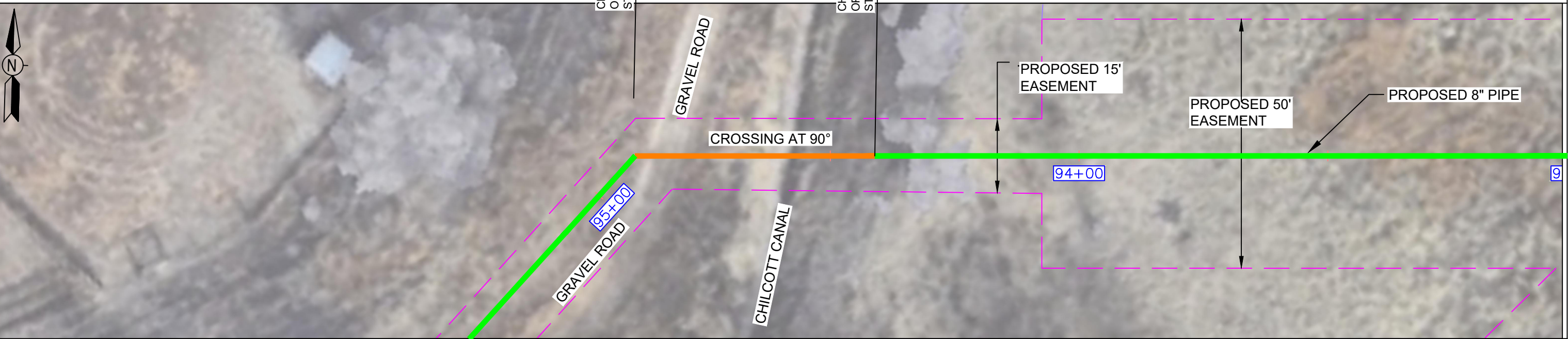
	PIPELINE		TEL. LINE		SEWER
	GAS PIPELINE		COMMUNICATION LINE		ELECT.
	WATER LINE		OVERHEAD ELECTRIC LINE		R.O.W.

HORIZONTAL STATIONING

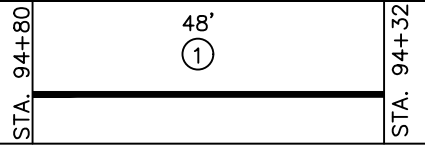
CHILCOTT CANAL
OPEN CUT
STA: 94+80

CHILCOTT CANAL
OPEN CUT
STA: 94+32

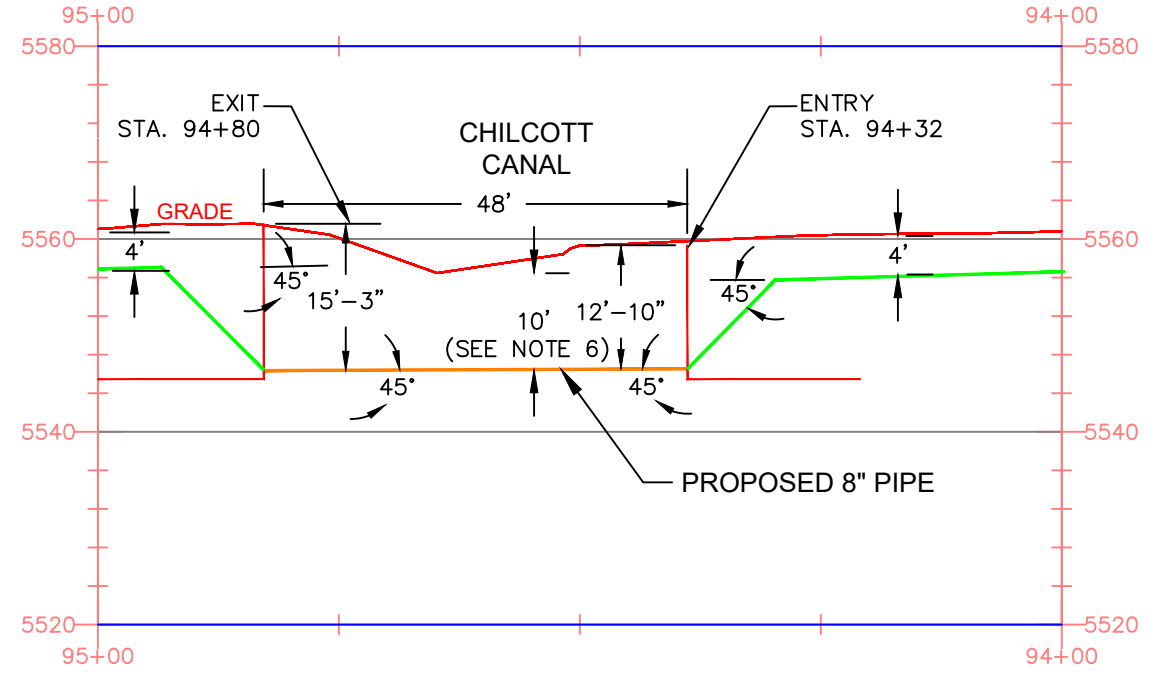
ALIGNMENT
SCALE: 1" = 100'



MATERIAL



PROFILE
SCALE: HORIZONTAL 1"=100' VERTICAL 1"=40'



NOTES

- STATIONING IS BASED ON HORIZONTAL DISTANCES.
- ALL GAS, WATER AND UTILITY LINES SHOULD BE LOCATED PRIOR TO ANY EXCAVATING, DIGGING, OR TRENCHING ANYWHERE ON OR NEAR THIS SITE.
- BHE ASSUMES NO RESPONSIBILITY FOR THE SPECIFIC LOCATION OF ANY BURIED GAS, WATER, OR UTILITY LINES THAT MAY BE PRESENT ON OR NEAR THIS SITE, NOR IS ANY LIABILITY ASSUMED FOR ANY LEGAL ACTION WHICH RESULTS FROM A DISCOVERY OF A GAS, WATER, OR UTILITY LINE IN ADDITION TO OR IN A DIFFERENT LOCATION THAN SHOW ON THIS PLAN.
- GROUND SURVEY PROVIDED BY (SURVEYOR), (MONTH), 20XX.
- HORIZONTAL CONTROL IS BASED ON NAD83 COLORADO STATE PLANE SOUTH ZONE (0503). VERTICAL DATUM IS NAVD88 AND BASED ON AN OPUS SOLUTION UTILIZING GEOID 12B.
- FLOW-FILL SHALL BE USED TO BACKFILL THE TRENCH AT THE DITCH CROSSING.

BILL OF MATERIALS		
1	8.625" OD 0.250" WT API 5LS X52 W14-16 MILLS FBE COATING	50'

REVISIONS						
NO.	DESCRIPTION	DATE	BY	CHK.	APPRVD	
A	FOR REVIEW	9/21/23	SKS	DJ	CD	
B	FOR REVIEW (REVISED)	10/24/23	SKS	DJ	CD	
C	FOR BID	12/1/23	SKS	DJ	CD	
D	ISSUED FOR CONSTRUCTION	12/14/23	SKS	DJ	CD	

ENGINEERING DESIGN
760 ALEGRE DR.
FOUNTAIN, CO 80817

2024 CONSTRUCTION

WO: 10083285

DESIGNED IN ACCORDANCE WITH TITLE 49-PART 192 OF MINIMUM FEDERAL SAFETY STANDARDS AND OPTIC GUIDE FOR GAS TRANSMISSION AND DISTRIBUTION PIPING SYSTEMS, LATEST EDITION.

SQUIREL CREEK
DETAIL PROFILE SHEET
CHILCOTT CANAL
OPEN CUT

EL PASO COUNTY COLORADO

DRWN: SKS CHK. DR.: DJ SCALE: AS SHOWN DATE: 9/8/23

DRAWING NUMBER: 0322-3203 SHEET NO. 13 of 20

ADDITIONAL INFORMATION



OWNERSHIP	---	MAOP	585 PSIG
ENVIRONMENTAL	---	CLASS LOCATION	CLASS 3 / DF = 0.5
JURISDICTION	---	TEST PRESSURE	878 PSIG (MIN.) / 1000 PSIG (MAX)
DEPTH OF COVER	4 FT MIN.	OPERATING PRESSURE	465 PSIG

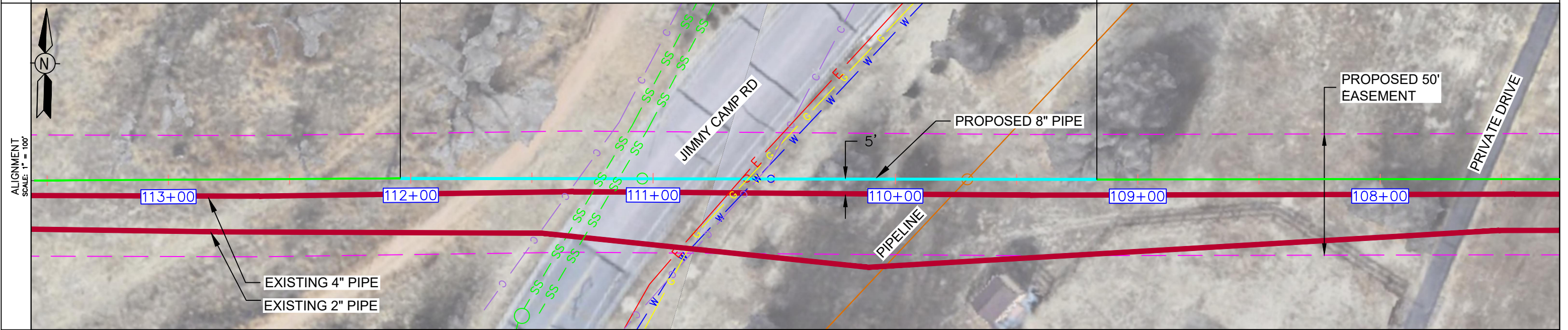
LEGEND:

	PIPELINE		TEL. LINE		SEWER		CABLE/FIBER
	GAS PIPELINE		COMMUNICATION LINE		ELECT.		R.O.W.
	WATER LINE		OVERHEAD ELECTRIC LINE		TEST STATION		

HORIZONTAL STATIONING

JIMMY CAMP RD
HDD
STA: 111+70

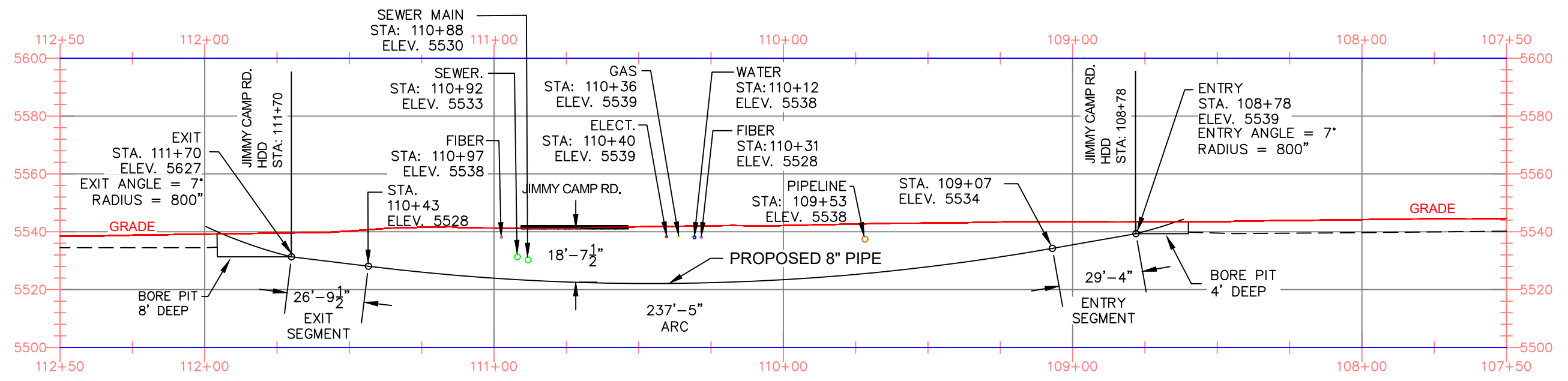
JIMMY CAMP RD
HDD
STA: 108+78



MATERIAL



PROFILE SCALE: HORIZONTAL 1"=100' VERTICAL 1"=40'



NOTES

- STATIONING IS BASED ON HORIZONTAL DISTANCES.
- ALL GAS, WATER AND UTILITY LINES SHOULD BE LOCATED PRIOR TO ANY EXCAVATING, DIGGING, OR TRENCHING ANYWHERE ON OR NEAR THIS SITE.
- BHE ASSUMES NO RESPONSIBILITY FOR THE SPECIFIC LOCATION OF ANY BURIED GAS, WATER, OR UTILITY LINES THAT MAY BE PRESENT ON OR NEAR THIS SITE, NOR IS ANY LIABILITY ASSUMED FOR ANY LEGAL ACTION WHICH RESULTS FROM A DISCOVERY OF A GAS, WATER, OR UTILITY LINE IN ADDITION TO OR IN A DIFFERENT LOCATION THAN SHOW ON THIS PLAN.
- GROUND SURVEY PROVIDED BY (SURVEYOR), (MONTH), 20XX.
- HORIZONTAL CONTROL IS BASED ON NAD83 COLORADO STATE PLANE SOUTH ZONE (0503). VERTICAL DATUM IS NAVD88 AND BASED ON AN OPUS SOLUTION UTILIZING GEOID 12B.

BILL OF MATERIALS		
NO.	DESCRIPTION	QUANTITY
1	8.625" OD 0.250" WT API 5LS X52 W14-16 MILLS FBE COATING AND 40 MILS ARO	300'

REVISIONS						
NO.	DESCRIPTION	DATE	BY	CHK.	APPROVD.	
A	FOR REVIEW	9/21/23	SKS	DJ	CD	
B	FOR REVIEW (REVISED)	10/24/23	SKS	DJ	CD	
C	ISSUED FOR BID	12/1/23	SKS	DJ	CD	
D	ISSUED FOR CONSTRUCTION	12/14/23	SKS	DJ	CD	

ENGINEERING DESIGN
760 ALEGRE DR.
FOUNTAIN, CO 80817

2024 CONSTRUCTION

WO: 10083285

DESIGNED IN ACCORDANCE WITH TITLE 49-PART 192 OF MINIMUM FEDERAL SAFETY STANDARDS AND GPIC GUIDE FOR GAS TRANSMISSION AND DISTRIBUTION PIPING SYSTEMS, LATEST EDITION.

SQUIREL CREEK
BORE PROFILE
JIMMY CAMP ROAD

EL PASO COUNTY COLORADO

DRWN: SKS CHK. DR. DJ SCALE AS SHOWN DATE 9/8/23

SHEET NO. 14 OF 20

ADDITIONAL INFORMATION



OWNERSHIP	---	MAOP	585 PSIG
ENVIRONMENTAL	---	CLASS LOCATION	CLASS 3 / DF = 0.5
JURISDICTION	---	TEST PRESSURE	878 PSIG (MIN.) / 1000 PSIG (MAX)
DEPTH OF COVER	4 FT MIN.	OPERATING PRESSURE	465 PSIG

LEGEND:

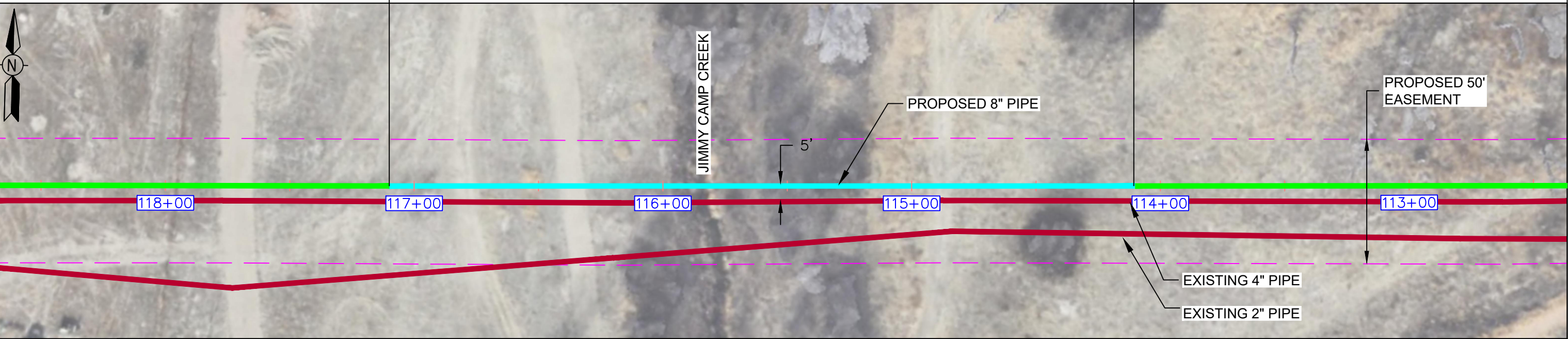
	PIPELINE		TEL. LINE		SEWER
	GAS PIPELINE		COMMUNICATION LINE		ELECT.
	WATER LINE		OVERHEAD ELECTRIC LINE		R.O.W.

HORIZONTAL STATIONING

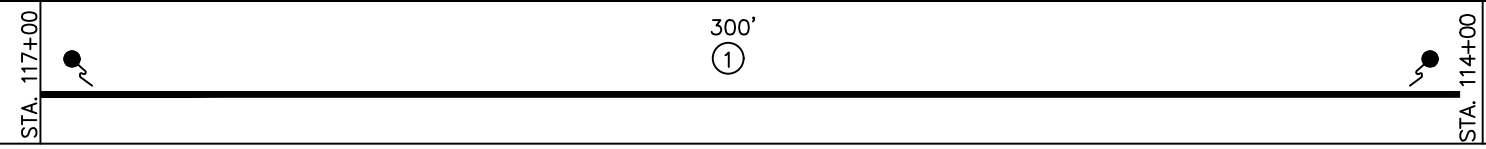
JIMMY CAMP CK
HDD
STA: 117+00

JIMMY CAMP CK
HDD
STA: 114+00

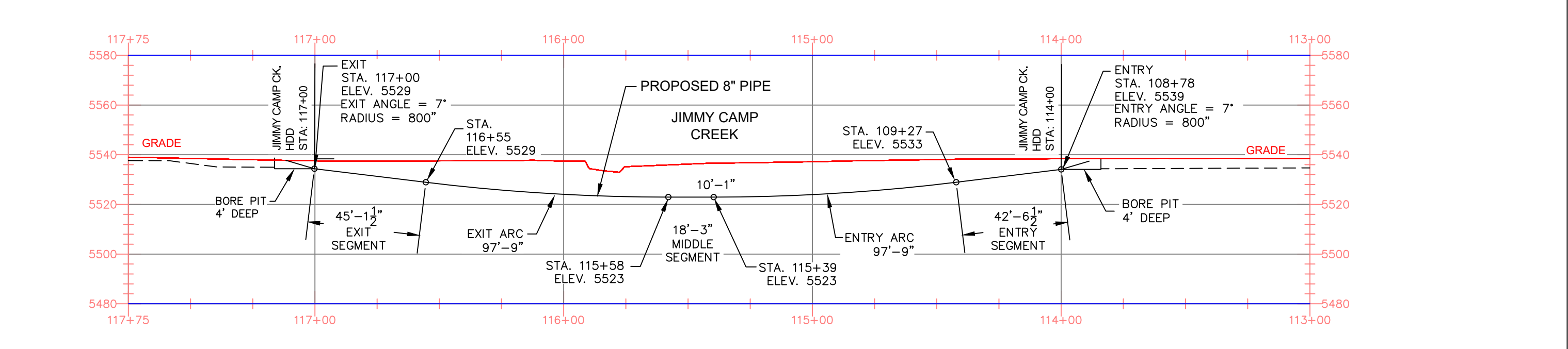
ALIGNMENT
SCALE: 1" = 40'



MATERIAL



PROFILE
SCALE: HORIZONTAL 1"=100' VERTICAL 1"=40'



NOTES

- STATIONING IS BASED ON HORIZONTAL DISTANCES.
- ALL GAS, WATER AND UTILITY LINES SHOULD BE LOCATED PRIOR TO ANY EXCAVATING, DIGGING, OR TRENCHING ANYWHERE ON OR NEAR THIS SITE.
- BHE ASSUMES NO RESPONSIBILITY FOR THE SPECIFIC LOCATION OF ANY BURIED GAS, WATER, OR UTILITY LINES THAT MAY BE PRESENT ON OR NEAR THIS SITE, NOR IS ANY LIABILITY ASSUMED FOR ANY LEGAL ACTION WHICH RESULTS FROM A DISCOVERY OF A GAS, WATER, OR UTILITY LINE IN ADDITION TO OR IN A DIFFERENT LOCATION THAN SHOWN ON THIS PLAN.
- GROUND SURVEY PROVIDED BY (SURVEYOR), (MONTH), 20XX.
- HORIZONTAL CONTROL IS BASED ON NAD83 COLORADO STATE PLANE SOUTH ZONE (0503). VERTICAL DATUM IS NAVD88 AND BASED ON AN OPUS SOLUTION UTILIZING GEOID 12B.

BILL OF MATERIALS		
1	8.625" OD 0.250" WT API 5LS X52 W14-16 MILLS FBE COATING AND 40 MILS ARO	350'

REVISIONS						
NO.	DESCRIPTION	DATE	BY	CHK.	APPRVD.	
A	FOR REVIEW	9/21/23	SKS	DJ	CD	
B	FOR REVIEW (REVISED)	10/24/23	SKS	DJ	CD	
C	ISSUED FOR BID	12/1/23	SKS	DJ	CD	
D	ISSUED FOR CONSTRUCTION	12/14/23	SKS	DJ	CD	

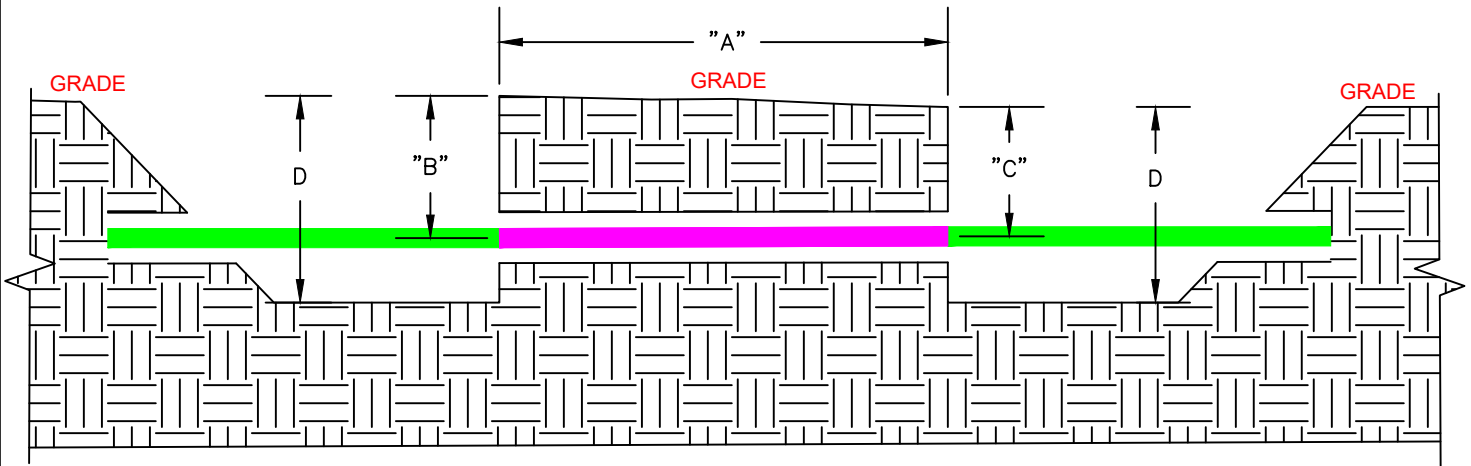
	ENGINEERING DESIGN 760 ALEGRE DR. FOUNTAIN, CO 80817	SQUIRREL CREEK BORE PROFILE SHEET JIMMY CAMP CREEK	
	2024 CONSTRUCTION WO: 10083285	EL PASO COUNTY COLORADO	SCALE AS SHOWN DATE 9/8/23
DESIGNED IN ACCORDANCE WITH TITLE 49-PART 192 OF MINIMUM FEDERAL SAFETY STANDARDS AND GPIC GUIDE FOR GAS TRANSMISSION AND DISTRIBUTION PIPING SYSTEMS, LATEST EDITION.	DRWN: SKS CHK. DR.: DJ	SHEET NO. 0322-3205	15 of 20

DATA TABLE

DESCRIPTION	SHEET	LENGTH "A"	DEPTH "B"	DEPTH "C"	DEPTH BELOW OBSTACLE
FMIC DITCH	7	34'-0"	16'-3"	16'-3"	6'-0"
PRIVATE PROP	9	30'-0"	4'-4"	4'-5"	4'-0"

* DIMENSION "D" IS TO BE DETERMINED BY CONTRACTOR.

- BORE PIPE
- INTERCONNECTION PIPE



JACK AND BORE TYPICAL DETAIL
SCALE=NONE



Know what's below.
Call before you dig.

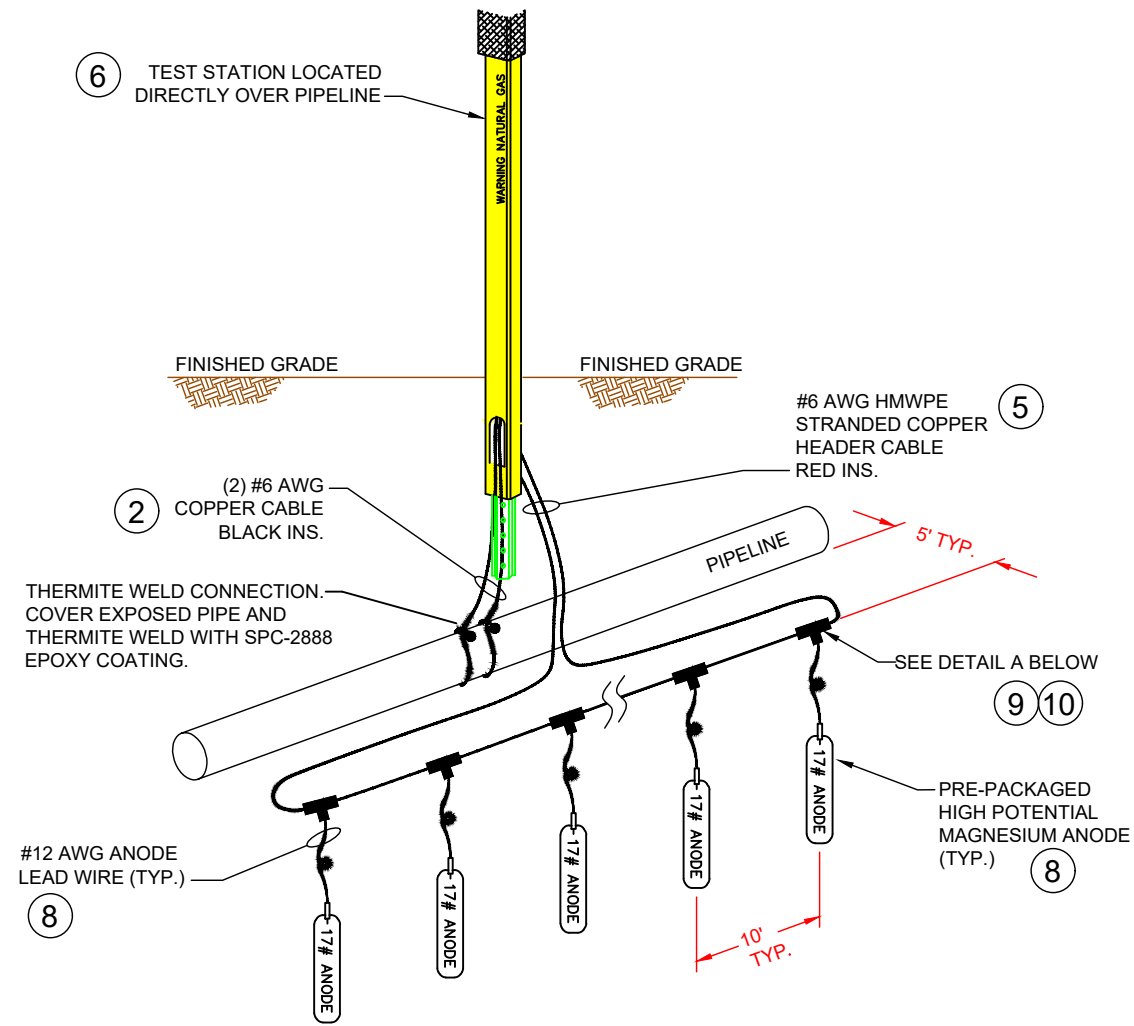
DRAWING REVISIONS					
NO.	DESCRIPTION	DATE	BY	CK.	APPRYD
0	ISSUED FOR CONSTRUCTION	12/14	SKS	DJ	CD
B	REVISED	12/10	SKS	DJ	CD
A	FOR REVIEW	11/10	SKS	DJ	CD



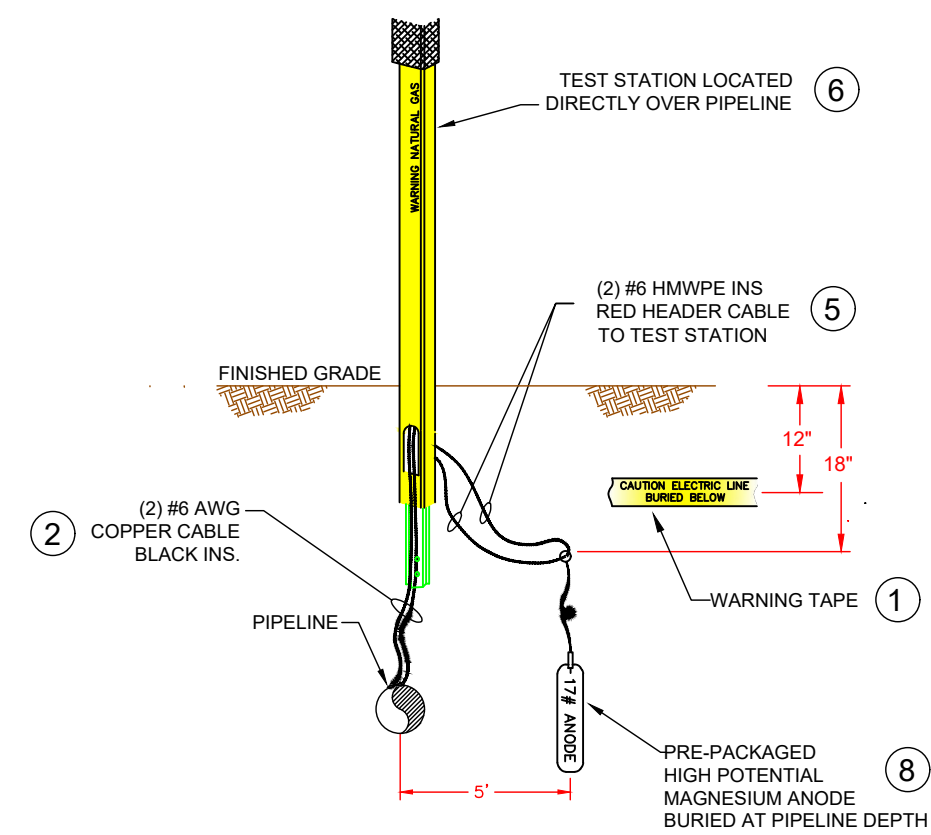
Natural Gas
Engineering Services
1102 E 1st Street
Papillion, NE 68046

DRAWING APPROVALS		
TYPE	DATE	BY
MECHANICAL		
ELECTRICAL		
PROJECT	11/10/2023	DEZMOND JEANS
PIPELINE		
DRAFTING	11/10/2023	SCOTT SHEPERD
MEASUREMENT		
FIELD		

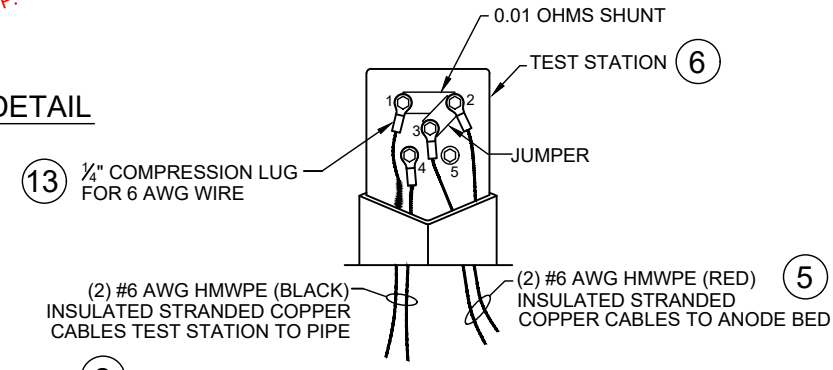
JACK AND BORE TYPICAL ----- PIPING STANDARDS		
DRAWN BY SKS	DATE 11/10/2023	STANDRAD DRAWING
SCALE AS-NOTED	CHECKED DJ	DWG. TYPE PRELIM. BID FINAL X
CADD FILE TBD		W.O. NO. 10083285
P.N. TBD		SHEET NO. 16 of 20



MAGNESIUM ANODE INSTALLATION DETAIL



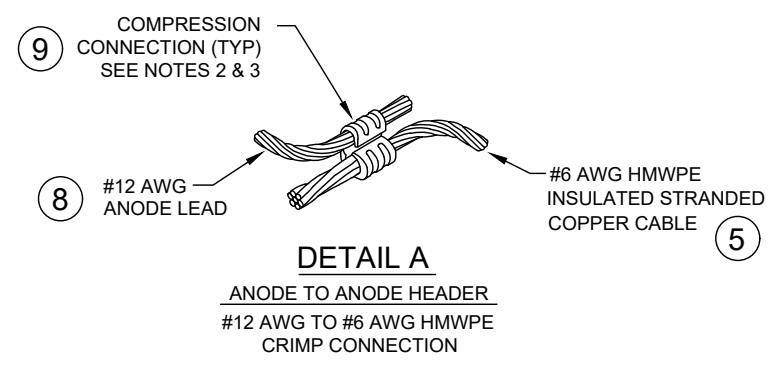
**SIDE VIEW
MAGNESIUM ANODE
INSTALLATION**



**ANODE TEST STATION
WIRING DETAIL
(SHOWN WITHOUT COVER)**

ANODE TEST STATION WIRING DETAIL

ANODE TEST STATION WIRING		
CONNECTIONS TO:		
TERMINAL	PIPE/DEVICE	QUANTITY
1	PIPELINE	1
2	ANODE BED	1
3	ANODE BED	1
4	PIPELINE	1
5	UNUSED	-



**DETAIL A
ANODE TO ANODE HEADER
#12 AWG TO #6 AWG HMWPE
CRIMP CONNECTION**

NOTES:

1. INSTALL MAGNESIUM ANODE BEDS AT LOCATIONS ALONG PIPELINE ACCORDING TO CP TECHNICIAN INSTRUCTIONS.
2. INSTALL MAGNESIUM ANODE A MINIMUM OF 5' AWAY FROM PIPELINE.
3. ANODE CAN BE INSTALLED IN HORIZONTAL OR VERTICAL CONFIGURATIONS.
4. ANODE BED TO BE CENTERED AT LOCATION INDICATED BY CP TECHNICIAN .
5. INSTALL WARNING TAPE (ITEM 1) APPROXIMATELY 1 FT BELOW GRADE OVERALL ANODE BED.
6. THE MAGNESIUM ANODES WILL BE INSTALLED AT LEAST AS DEEP AS THE BOTTOM OF THE PIPE.
7. USE RESIN SPLICE KIT TO SEAL CRIMP CONNECTIONS.
8. COMPRESS CRIMP CONNECTOR USING CORRECT HAND OPERATED OR HYDRAULIC CRIMPING TOOL WITH CORRECT DIE FOR THE GIVEN CRIMP CONNECTOR.

NOTES

1. STATIONING IS BASED ON HORIZONTAL DISTANCES.
2. ALL GAS, WATER AND UTILITY LINES SHOULD BE LOCATED PRIOR TO ANY EXCAVATING, DIGGING, OR TRENCHING ANYWHERE ON OR NEAR THIS SITE.
3. BHE ASSUMES NO RESPONSIBILITY FOR THE SPECIFIC LOCATION OF ANY BURIED GAS, WATER, OR UTILITY LINES THAT MAY BE PRESENT ON OR NEAR THIS SITE, NOR IS ANY LIABILITY ASSUMED FOR ANY LEGAL ACTION WHICH RESULTS FROM A DISCOVERY OF A GAS, WATER, OR UTILITY LINE IN ADDITION TO OR IN A DIFFERENT LOCATION THAN SHOW ON THIS PLAN.
4. GROUND SURVEY PROVIDED BY (SURVEYOR), (MONTH), 20XX.
5. HORIZONTAL CONTROL IS BASED ON NAD83 COLORADO STATE PLANE SOUTH ZONE (0503). VERTICAL DATUM IS NAVD88 AND BASED ON AN OPUS SOLUTION UTILIZING GEOID 12B.

BILL OF MATERIALS

SEE MATERIAL LIST ON DRAWING 0322-5993

REVISIONS

NO.	DESCRIPTION	DATE	BY	CHK.	APPRVD
A	FOR REVIEW	9/21/23	SKS	DJ	CD
B	FOR REVIEW (REVISED)	10/24/23	SKS	DJ	CD
C	ISSUED FOR BID	12/1/23	SKS	DJ	CD
D	ISSUED FOR CONSTRUCTION	12/14/23	SKS	DJ	CD

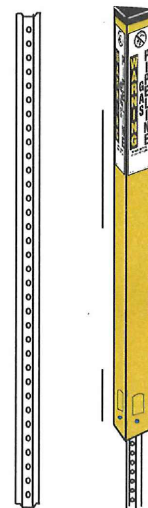
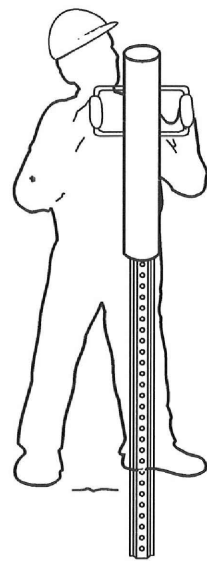


ENGINEERING DESIGN
760 ALEGRE DR.
FOUNTAIN, CO 80817

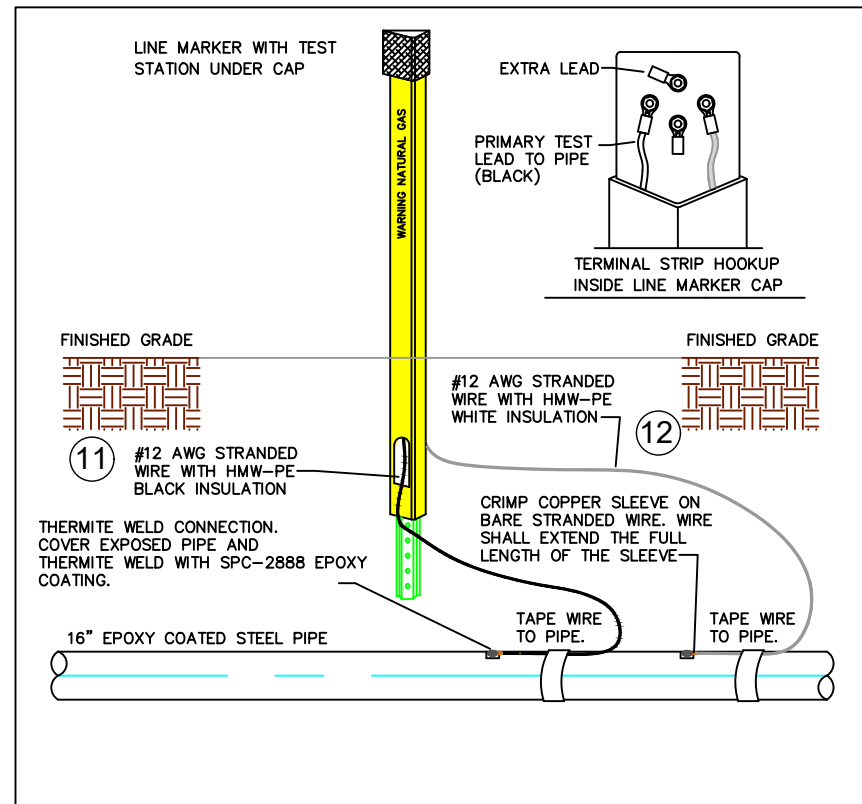
**SQUIREL CREEK
CATHODIC PROTECTION TEST STATION
DETAILS 1**

2024 CONSTRUCTION	WO: 10083285	EL PASO COUNTY	COLORADO
DWG. TYPE PRELIM. BID FINAL ✓	DESIGNED IN ACCORDANCE WITH TITLE 49-PART 192 OF MINIMUM FEDERAL SAFETY STANDARDS AND GPIC GUIDE FOR GAS TRANSMISSION AND DISTRIBUTION PIPING SYSTEMS, LATEST EDITION.	DRAWN SKS	CHK. DR. DJ
		SCALE AS SHOWN	DATE 9/8/23
		DRAWING NUMBER 0322-5990	SHEET NO. 17 of 20

New Installation With U-Channel Posts



1. Drive u-channel 18"-24" into ground.
 2. Slide TriView over the u-channel post.
 3. Fasten TriView to u-channel post with the TriView Fastener or bolts.
- TriView fasteners.*
One hit with a hammer locks the TriView onto a 1.12 lb. u-channel post.



PART	QUANTITY	UNIT	SIZE	ITEM DESCRIPTION	M.S. No.	CLASS	ITEM
11	TBD FT		#12 AWG	HMWPE (BLACK) INSULATED STRANDED COPPER CABLE, SOFT-DRAWN, COMMERCIALY PURE COPPER, ASTM B8, CLASS B STD.		N/A	
12	TBD FT		#12 AWG	HMWPE (WHITE) INSULATED STRANDED COPPER CABLE, SOFT-DRAWN, COMMERCIALY PURE COPPER, ASTM B8, CLASS B STD.		N/A	

LINE MARKER/CATHODIC TEST STATION DETAIL

NO SCALE

NOTES

1. STATIONING IS BASED ON HORIZONTAL DISTANCES.
2. ALL GAS, WATER AND UTILITY LINES SHOULD BE LOCATED PRIOR TO ANY EXCAVATING, DIGGING, OR TRENCHING ANYWHERE ON OR NEAR THIS SITE.
3. BHE ASSUMES NO RESPONSIBILITY FOR THE SPECIFIC LOCATION OF ANY BURIED GAS, WATER, OR UTILITY LINES THAT MAY BE PRESENT ON OR NEAR THIS SITE, NOR IS ANY LIABILITY ASSUMED FOR ANY LEGAL ACTION WHICH RESULTS FROM A DISCOVERY OF A GAS, WATER, OR UTILITY LINE IN ADDITION TO OR IN A DIFFERENT LOCATION THAN SHOWN ON THIS PLAN.
4. GROUND SURVEY PROVIDED BY (SURVEYOR), (MONTH), 20XX.
5. HORIZONTAL CONTROL IS BASED ON NAD83 COLORADO STATE PLANE SOUTH ZONE (0503). VERTICAL DATUM IS NAVD88 AND BASED ON AN OPUS SOLUTION UTILIZING GEOID 12B.

BILL OF MATERIALS

NO.	DESCRIPTION	QUANTITY
1	8" API 5LS X52 W/14-16 MILLS FBE COATING AND 40 MILS ARO	750'
2	8" API 5LS X52 W/14-16 MILLS FBE COATING AND 40 MILS ARO, WT-0.250"	225'

REVISIONS

NO.	DESCRIPTION	DATE	BY	CHK.	APPRVD
A	FOR REVIEW	9/21/23	SKS	DJ	CD
B	FOR REVIEW (REVISED)	10/24/23	SKS	DJ	CD
C	ISSUED FOR BID	12/1/23	SKS	DJ	CD
D	ISSUED FOR CONSTRUCTION	12/14/23	SKS	DJ	CD



ENGINEERING DESIGN
760 ALEGRE DR.
FOUNTAIN, CO 80817

SQUIRREL CREEK
CATHODIC PROTECTION TEST STATION
DETAILS 2

2024 CONSTRUCTION

WO: 10083285

EL PASO COUNTY COLORADO

DWG. TYPE

DRAWN SKS CHK. DR. DJ SCALE AS SHOWN DATE 9/8/23

PRELIM. BID FINAL

DESIGNED IN ACCORDANCE WITH TITLE 49-PART 192 OF MINIMUM FEDERAL SAFETY STANDARDS AND GPIC GUIDE FOR GAS TRANSMISSION AND DISTRIBUTION PIPING SYSTEMS, LATEST EDITION.

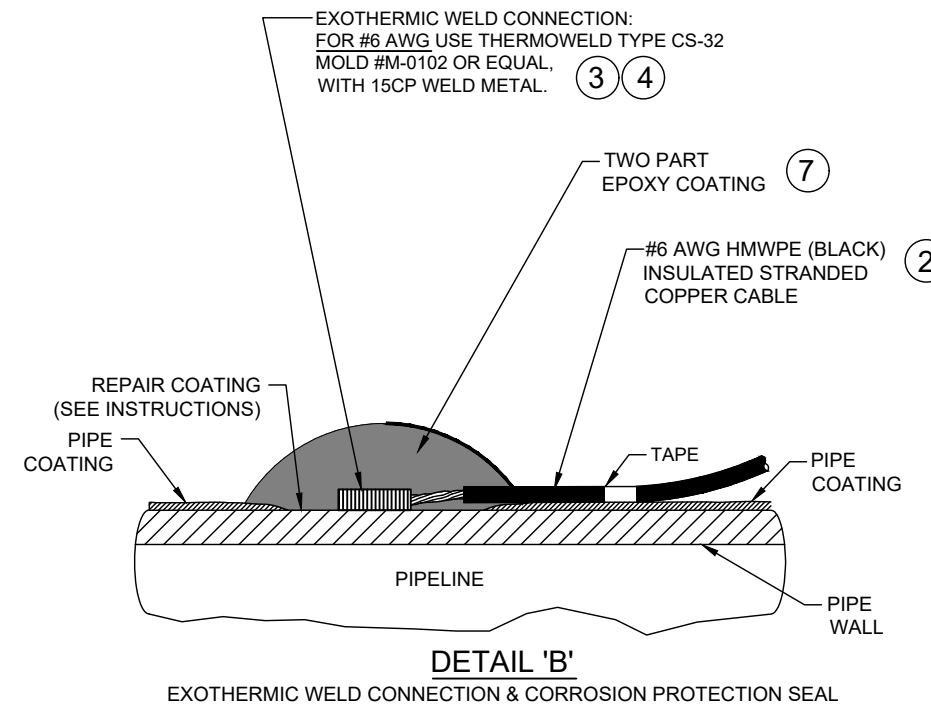
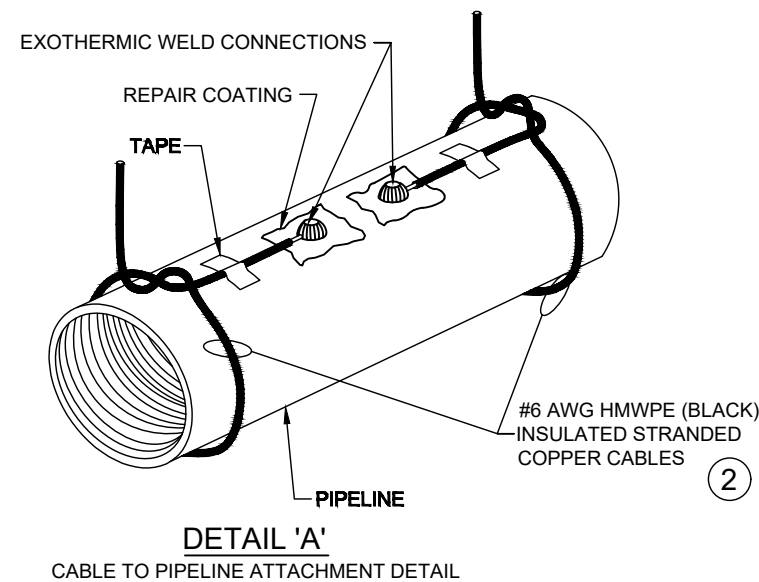
DRAWING NUMBER: 0322-5991 SHEET NO. 18 of 20

EXOTHERMIC WELD INSTRUCTIONS:

- FIRST DETERMINE IF THE PIPELINE IS SUITABLE FOR EXOTHERMIC WELDING BY CONDUCTING THE FOLLOWING TESTS:
 - DETERMINE THAT THE PIPELINE SMYS (SPECIFIED MINIMUM YIELD STRENGTH) IS <80,000 PSI.
 - DETERMINE THAT PIPELINE WALL THICKNESS IS 1/8" (0.125") OR GREATER.
 - PERFORM ULTRASONIC TESTING TO PIPELINE TO DETERMINE THAT NO SURFACE OR INTERNAL DEFECTS EXIST.
- FOR EACH CABLE TO PIPELINE CONNECTION (EXOTHERMIC WELD), REMOVE A 3"x3" MAX AREA OF PIPELINE COATING AT THE 12:00 O'CLOCK POSITION ON THE PIPELINE AND BRUSH UNTIL BRIGHT-CLEAN. ANY ADJACENT CABLE CONNECTIONS SHALL BE A MINIMUM OF 12" APART.
- PREPARE PIPELINE SURFACE AS SPECIFIED BY COATING MANUFACTURER.
- DETAIL 'A' SHOWS POSSIBLE METHOD OF CABLE STRAIN RELIEF FOR NEW PIPELINE INSTALLATIONS. THIS METHOD IS NOT A REQUIREMENT. OTHER MEANS OF STRAIN RELIEF MAY BE USED.
- STRIP BACK ANY CABLE INSULATION 1"-2" AND TAPE CABLE TO PIPE. CRUCIBLE TIGHT TO PIPELINE.

- ENSURE THAT THE PIPELINE WELD AREA AND CABLE ARE CLEAN AND DRY PRIOR TO WELDING.
- USE SPECIFIC WELD MOLD AND WELD METAL AS INDICATED IN DRAWING MATERIAL LIST.
- IF INDICATED, USE COPPER HEAT SLEEVE ON CABLE END TO BE WELDED.
- USE ONLY A 15 GRAM WELDING CHARGE. DO NOT EXCEED.
- PLACE THE METAL RETAINER DISK IN THE SPECIFIED WELD MOLD AND DUMP (DO NOT POUR) WELD METAL POWDER ONTO THE DISK. MAKE SURE THAT ALL OF THE FINE STARTING POWDER IS IN THE MOLD. IF ANY POWDER REMAINS IN THE CARTRIDGE BOTTOM, SQUEEZE OUT INTO MOLD AND BREAK UP.
- CLOSE MOLD LID.
- REPLACE CAP ON EMPTY WELD METAL CARTRIDGE AND PLACE BACK INTO CARTRIDGE PACK BOX UPSIDE DOWN TO KEEP THE REMAINING CARTRIDGES UPRIGHT.
- LAY THE CABLE END ON THE PREPARED PIPE HOLDING

- USING EYE AND HAND PROTECTION, STAND ON THE OPPOSITE SIDE OF THE CRUCIBLE FROM THE TOUCH HOLE AND IGNITE POWDER WITH SPARK FROM FLINT GUN. ***CAUTION: POWDER WILL FLASH WHEN IGNITED***
- WHEN WELD HAS SET, REMOVE WELD MOLD AND TEST CONNECTION BY RAPPING SHARPLY WITH A SLAG HAMMER. IF THERE IS ANY INDICATION THAT A COMPLETE WELD HAS NOT BEEN ACHIEVED, REMOVE THE WELD AND RE-APPLY.
- IF WELD IS GOOD, REMOVE ANY SLAG WITH HAMMER AND CLEAN USING A WIRE BRUSH.
- ONCE THE WELD CONNECTION AND AREA HAVE BEEN CLEANED, REPAIR COATING USING TWO-PART EPOXY COATING REPAIR KIT AS SPECIFIED IN THE DRAWING MATERIALS LIST (OR APPROVED COATING AS SPECIFIED BY BLACK HILLS ENERGY).
- REFER TO BLACK HILLS ENERGY REPAIR SPECIFICATIONS AND PRODUCT DATA SHEET TO DETERMINE IF REPAIR IS ACCEPTABLE.
- AFTER REPAIR COATING HAS CURED ACCORDING TO MANUFACTURER'S SPECIFICATIONS, HOLIDAY DETECTION MUST BE PERFORMED.



PART	QUANTITY	UNIT	SIZE	ITEM DESCRIPTION	M.S. No.	CLASS	ITEM
2	TBD FT		#6 AWG	HMWPE (BLACK) INSULATED STRANDED COPPER CABLE, SOFT-DRAWN, COMMERCIALY PURE COPPER, ASTM B8, CLASS B STD. (ANODE TEST STATIONS)		N/A	
3	1 EA			EXOTHERMIC WELD MOLD, THERMOWELD P/N M-0102 OR EQUAL W/ HANDLE & FLINT IGNITOR		N/A	
4	1 BOX			EXOTHERMIC WELD METAL, THERMOWELD P/N 15CP OR EQUAL		N/A	
7	TBD TUBE(S)			SPC-2888 TWO PART EPOXY (APPLY 20 MILS THICKNESS MIN. 50 ML TUBE WILL REPAIR TWO CONNECTIONS TO PIPE)		N/A	

EXOTHERMIC WELD-CATHODIC TEST STATION DETAIL

NO SCALE

NOTES

- STATIONING IS BASED ON HORIZONTAL DISTANCES.
- ALL GAS, WATER AND UTILITY LINES SHOULD BE LOCATED PRIOR TO ANY EXCAVATING, DIGGING, OR TRENCHING ANYWHERE ON OR NEAR THIS SITE.
- BHE ASSUMES NO RESPONSIBILITY FOR THE SPECIFIC LOCATION OF ANY BURIED GAS, WATER, OR UTILITY LINES THAT MAY BE PRESENT ON OR NEAR THIS SITE, NOR IS ANY LIABILITY ASSUMED FOR ANY LEGAL ACTION WHICH RESULTS FROM A DISCOVERY OF A GAS, WATER, OR UTILITY LINE IN ADDITION TO OR IN A DIFFERENT LOCATION THAN SHOW ON THIS PLAN.
- GROUND SURVEY PROVIDED BY (SURVEYOR), (MONTH), 20XX.
- HORIZONTAL CONTROL IS BASED ON NAD83 COLORADO STATE PLANE SOUTH ZONE (0503). VERTICAL DATUM IS NAVD88 AND BASED ON AN OPUS SOLUTION UTILIZING GEOID 12B.

BILL OF MATERIALS

DESCRIPTION	QUANTITY	UNIT
SEE ABOVE	750'	
	225'	

REVISIONS

NO.	DESCRIPTION	DATE	BY	CHK.	APPRVD
A	FOR REVIEW	9/21/23	SKS	DJ	CD
B	FOR REVIEW (REVISED)	10/24/23	SKS	DJ	CD
C	ISSUED FOR BID	12/1/23	SKS	DJ	CD
D	ISSUED FOR CONSTRUCTION	12/14/23	SKS	DJ	CD



ENGINEERING DESIGN
760 ALEGRE DR.
FOUNTAIN, CO 80817

SQUIRREL CREEK
CATHODIC PROTECTION TEST STATION
EXOTHERMIC WELD DETAILS

2024 CONSTRUCTION

WO: 10083285

EL PASO COUNTY COLORADO

DWG. TYPE: PRELIM. BID. FINAL

DESIGNED IN ACCORDANCE WITH TITLE 49-PART 192 OF MINIMUM FEDERAL SAFETY STANDARDS AND GPIC GUIDE FOR GAS TRANSMISSION AND DISTRIBUTION PIPING SYSTEMS, LATEST EDITION.

DRWN: SKS CHK. DR.: DJ SCALE: AS SHOWN DATE: 9/8/23

DRAWING NUMBER: 0322-5992 SHEET NO. 19 of 20

PART	QUANTITY	UNIT	SIZE	ITEM DESCRIPTION	M.S. No.	CLASS	ITEM
1	1	ROLL	3" WIDE	PANDUIT CORP., UNDERGROUND WARNING TAPE, PART #HTU3Y-E, YELLOW TAPE WITH BLACK LETTERS, READS "CAUTION ELECTRICAL LINE BURIED BELOW", 1 ROLL = 1000 FEET, GRAYBAR ELECTRICAL COMPANY, OMAHA, NE, PHONE 402-592-7676		N/A	
2	TBD	FT	#6 AWG	HMWPE (BLACK) INSULATED STRANDED COPPER CABLE, SOFT-DRAWN, COMMERCIALY PURE COPPER, ASTM B8, CLASS B STD. (ANODE TEST STATIONS		N/A	
3	1	EA		EXOTHERMIC WELD MOLD, THERMOWELD P/N M-0102 OR EQUAL W/ HANDLE & FLINT IGNITOR		N/A	
4	1	BOX		EXOTHERMIC WELD METAL, THERMOWELD P/N 15CP OR EQUAL		N/A	
5	TBD	FT	#6 AWG	HMWPE (RED) INSULATED STRANDED COPPER CABLE, SOFT-DRAWN, COMMERCIALY PURE COPPER, ASTM B8, CLASS B STD. (ANODE TEST STATIONS CONNECTIONS TO		N/A	
6	TBD	EA	6'	RHINO TRVIEW TEST STATION, YELLOW POST WITH WHITE CAP & LOCK, 72" LENGTH, 5 - 1/4" BRASS TERMINALS, TO INCLUDE (1 EA.) 0.01 OHM SHUNT & (1 EA.) JUMPER		N/A	
7	TBD	TUBE(S)		SPC-2888 TWO PART EPOXY (APPLY 20 MILS THICKNESS MIN. 50 ML TUBE WILL REPAIR TWO CONNECTIONS TO PIPE)		N/A	
8	TBD	EA	17#	MAGNESIUM ANODE, 17 LB SIZE, PREPACKAGED WITH LEAD WIRE	44.01	044	0143
9	TBD	EA		CRIMP CONNECTOR, COPPER, #6 AWG STRANDED RUN, #12 AWG TAP, BURNDY P/N YC6L12		N/A	
10	TBD	EA		RESIN SPLICE KIT, 3M SCOTCHCAST 90-B1 (FOR PROTECTION OF CRIMPED CABLE		N/A	
11	TBD	FT	#12 AWG	HMWPE (BLACK) INSULATED STRANDED COPPER CABLE, SOFT-DRAWN, COMMERCIALY PURE COPPER, ASTM B8, CLASS B STD.		N/A	
12	TBD	FT	#12 AWG	HMWPE (WHITE) INSULATED STRANDED COPPER CABLE, SOFT-DRAWN, COMMERCIALY PURE COPPER, ASTM B8, CLASS B STD.		N/A	
13	4	PER POST	#6	COMPRESSION LUG - 1/4" STUD HOLE, BURNDY PT. #YA6C OR EQUAL		N/A	

MATERIAL LIST-CATHODIC TEST STATION

NO SCALE

NOTES

- STATIONING IS BASED ON HORIZONTAL DISTANCES.
- ALL GAS, WATER AND UTILITY LINES SHOULD BE LOCATED PRIOR TO ANY EXCAVATING, DIGGING, OR TRENCHING ANYWHERE ON OR NEAR THIS SITE.
- BHE ASSUMES NO RESPONSIBILITY FOR THE SPECIFIC LOCATION OF ANY BURIED GAS, WATER, OR UTILITY LINES THAT MAY BE PRESENT ON OR NEAR THIS SITE, NOR IS ANY LIABILITY ASSUMED FOR ANY LEGAL ACTION WHICH RESULTS FROM A DISCOVERY OF A GAS, WATER, OR UTILITY LINE IN ADDITION TO OR IN A DIFFERENT LOCATION THAN SHOW ON THIS PLAN.
- GROUND SURVEY PROVIDED BY (SURVEYOR), (MONTH), 20XX.
- HORIZONTAL CONTROL IS BASED ON NAD83 COLORADO STATE PLANE SOUTH ZONE (0503). VERTICAL DATUM IS NAVD88 AND BASED ON AN OPUS SOLUTION UTILIZING GEOID 12B.

REVISIONS		Black Hills Energy		ENGINEERING DESIGN 760 ALEGRE DR. FOUNTAIN, CO 80817		SQUIRREL CREEK CATHODIC PROTECTION TEST STATION DETAILS 4	
NO.	DESCRIPTION	DATE	BY	CHK.	APPRYD	EL PASO COUNTY	COLORADO
A	FOR REVIEW	9/21/23	SKS	DJ	CD		
B	FOR REVIEW (REVISED)	10/24/23	SKS	DJ	CD		
C	ISSUED FOR BID	12/1/23	SKS	DJ	CD		
D	ISSUED FOR CONSTRUCTION	12/14/23	SKS	DJ	CD		
		2024 CONSTRUCTION		WO: 10083285		SCALE AS SHOWN DATE 9/8/23	
		Dwg. TYPE: PRELIM. BID FINAL ✓		DESIGNED IN ACCORDANCE WITH TITLE 49-PART 192 OF MINIMUM FEDERAL SAFETY STANDARDS AND GPIC GUIDE FOR GAS TRANSMISSION AND DISTRIBUTION PIPING SYSTEMS, LATEST EDITION.		DRAWING NUMBER: 0322-5993 SHEET NO. 20 of 20	

V1_Plan & Profile Sheet.pdf Markup Summary

Callout (1)



Subject: Callout
Page Label: [6] Squirrel Creek-ALIGNMENT 4 (2)
Author: CDurham
Date: 1/9/2024 9:48:54 AM
Status:
Color: ■
Layer:
Space:

Show and label ROW

CD - Engineer (1)



Subject: CD - Engineer
Page Label: [1] Squirrel Creek-COVER SHEET PE SEAL
Author: CDurham
Date: 1/9/2024 9:23:30 AM
Status:
Color: ■
Layer:
Space:

Design Engineer's Statement:

These detailed plans and specifications were prepared under my direction and supervision. Said plans and specifications have been prepared according to the criteria established by the County for detailed roadway, drainage, grading and erosion control plans and specifications, and said plans and specifications are in conformity with applicable master drainage plans and master transportation plans. Said plans and specifications meet the purposes for which the particular roadway and drainage facilities are designed and are correct to the best of my knowledge and belief.

I accept responsibility for any liability caused by any negligent acts, errors or omissions on my part in preparation of these detailed plans and specifications.

[Name, P.E. # _____]
Date

CD-Developer (1)



Subject: CD-Developer
Page Label: [1] Squirrel Creek-COVER SHEET PE SEAL
Author: CDurham
Date: 1/9/2024 9:23:23 AM
Status:
Color: ■
Layer:
Space:

Owner/Developer's Statement:

I, the owner/developer have read and will comply with the requirements of the grading and erosion control plan and all of the requirements specified in these detailed plans and specifications.

[Name, Title]
Date
[Business Name]
[Address]

Construction Drawings - County (1)



Subject: Construction Drawings - County
Page Label: [1] Squirrel Creek-COVER SHEET PE SEAL
Author: CDurham
Date: 1/9/2024 9:23:38 AM
Status:
Color: ■
Layer:
Space:

El Paso County:

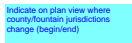
County plan review is provided only for general conformance with County Design Criteria. The County is not responsible for the accuracy and adequacy of the design, dimensions, and/or elevations which shall be confirmed at the job site. The County through the approval of this document assumes no responsibility for completeness and/or accuracy of this document.

Filed in accordance with the requirements of the El Paso County Land Development Code, Drainage Criteria Manual, Volumes 1 and 2, and Engineering Criteria Manual as amended.

In accordance with ECM Section 1.12, these construction documents will be valid for construction for a period of 2 years from the date signed by the El Paso County Engineer. If construction has not started within those 2 years, the plans will need to be resubmitted for approval, including payment of review fees at the Planning and Community Development Directors discretion.

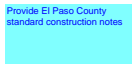
Joshua Palmer
Date
County Engineer / ECM Administrator

Text Box (6)



Subject: Text Box
Page Label: [1] Squirrel Creek-COVER SHEET PE SEAL
Author: CDurham
Date: 1/9/2024 9:23:00 AM
Status:
Color: ■
Layer:
Space:

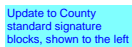
Indicate on plan view where county/fountain jurisdictions change (begin/end)



Subject: Text Box
Page Label: [1] Squirrel Creek-COVER SHEET PE SEAL
Author: CDurham
Date: 1/9/2024 9:23:09 AM
Status:
Color: ■
Layer:
Space:

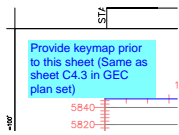
Provide El Paso County standard construction notes

BILL OF L



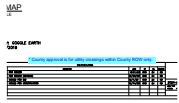
Subject: Text Box
Page Label: [1] Squirrel Creek-COVER SHEET PE SEAL
Author: CDurham
Date: 1/9/2024 9:23:15 AM
Status:
Color: ■
Layer:
Space:

Update to County standard signature blocks, shown to the left



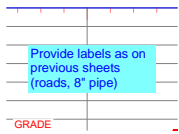
Subject: Text Box
Page Label: [2] Squirrel Creek-ALIGNMENT 1
Author: CDurham
Date: 1/9/2024 9:23:53 AM
Status:
Color: ■
Layer:
Space:

Provide keymap prior to this sheet (Same as sheet C4.3 in GEC plan set)



Subject: Text Box
Page Label: [1] Squirrel Creek-COVER SHEET PE SEAL
Author: CDurham
Date: 1/9/2024 9:43:52 AM
Status:
Color: ■
Layer:
Space:

* County approval is for utility crossings within County ROW only.



Subject: Text Box
Page Label: [6] Squirrel Creek-ALIGNMENT 4 (2)
Author: CDurham
Date: 1/9/2024 9:48:37 AM
Status:
Color: ■
Layer:
Space:

Provide labels as on previous sheets (roads, 8" pipe)