

EROSION CONTROL LEGEND

- SF SILT FENCE (INITIAL/INTERIM)
RS CURB ROCK SOCKS (INITIAL/INTERIM)
CF CONSTRUCTION FENCE (INITIAL, INTERIM)
SCL SEDIMENT CONTROL LOG (INITIAL, INTERIM)
PS PERMANENT SEEDING (INTERIM, FINAL)
TSB TEMPORARY SEDIMENT BASIN (INITIAL)
SSA STABILIZED STAGING AREA (INITIAL)
CWA CONCRETE WASHOUT AREA (INTERIM)
SP STOCKPILE AREA (INTERIM)
VTC VEHICLE TRACK CONTROL (INITIAL, INTERIM)
IP-# ON-GRADE (IP-1) & SUMP (IP-2) INLET PROTECTION (INITIAL/INTERIM)

- PROPERTY LINE
EASEMENT LINE
SETBACK LINE
LIMITS OF DISTURBANCE/CONSTRUCTION
PROPERTY CORNER/MONUMENT, BENCHMARK OR TEMPORARY BENCHMARK
SHEET FLOW/DRAINAGE DIRECTION
PROPOSED MINOR CONTOUR
PROPOSED MAJOR CONTOUR
EXISTING MINOR CONTOUR
EXISTING MAJOR CONTOUR
SPOT ELEVATION

SITE HATCHING

- AREAS OF CUT
AREAS OF FILL
PROP. STRUCTURE/BUILDING
PROP. SIDEWALK

FEMA FLOODPLAIN STATEMENT

ACCORDING TO FEMA FLOODPLAIN MAP 0804100752G DATED 12/07/2018, THE PROPERTY FALLS WITHIN ZONE X, AREA OF MINIMAL FLOOD HAZARD.

BATCH PLANT STATEMENT

NO BATCH PLANTS ARE TO BE USED ON SITE

EXISTING VEGETATION COVERS APPROXIMATELY 98.5% OF THE SITE AND CONSISTS OF NATIVE GRASS WITH EXISTING IMPERVIOUSNESS OF APPROXIMATELY 1.5%

\*CONTRACTOR TO HAUL DIRT/SOIL OFF-SITE DURING CONSTRUCTION. NO OVER NIGHT STOCKPILING OF MATERIALS TO BE DONE ON-SITE.

BMP COST ESTIMATE

Table with columns: BID ITEM, UNIT, EST. \$/UNIT, TOTAL COST. Includes items like Permanent Seeding, Permanent Mulching, Permanent Pond, Safety Fence, etc.

NET: \$36,191.50
MAINTENANCE (35%): \$6,207.95
TOTAL: \$42,399.45

NOTES

- 1. ALL UNIT PRICES REFLECT INSTALLED PRICES UNLESS OTHERWISE NOTED.
2. ALL UNIT PRICES PROVIDED BY EL PASO COUNTY 2021 FINANCIAL ASSURANCE ESTIMATE FORM.

ENGINEER'S STATEMENT

THIS GRADING AND EROSION CONTROL PLAN WAS PREPARED UNDER MY DIRECTION AND SUPERVISION AND IS CORRECT TO THE BEST OF MY KNOWLEDGE AND BELIEF. SAID PLAN HAS BEEN PREPARED ACCORDING TO THE CRITERIA ESTABLISHED BY THE COUNTY FOR GRADING AND EROSION CONTROL PLANS. I ACCEPT RESPONSIBILITY FOR ANY LIABILITY CAUSED BY ANY NEGLIGENT ACTS, ERRORS OR OMISSIONS ON MY PART IN PREPARING THIS PLAN.

ENGINEER OF RECORD SIGNATURE DATE 12/07/2022

EL PASO COUNTY STANDARD NOTES

- 1. STORMWATER DISCHARGES FROM CONSTRUCTION SITES SHALL NOT CAUSE OR THREATEN TO CAUSE POLLUTION, CONTAMINATION, OR DEGRADATION OF STATE WATERS. ALL WORK AND EARTH DISTURBANCES SHALL BE DONE IN A MANNER THAT MINIMIZES POLLUTION OF ANY SOIL-SITE OR OFF-SITE WATERS, INCLUDING WETLANDS.
2. NOTWITHSTANDING ANYTHING DEPICTED IN THESE PLANS IN WORDS OR GRAPHIC REPRESENTATION, ALL DESIGN AND CONSTRUCTION RELATED TO ROADS, STORM DRAINAGE AND EROSION CONTROL SHALL CONFORM TO THE STANDARDS AND REQUIREMENTS OF THE MOST RECENT VERSION OF THE RELEVANT ADOPTED EL PASO COUNTY STANDARDS, INCLUDING THE LAND DEVELOPMENT CODE, THE ENGINEERING CRITERIA MANUAL, THE DRAINAGE CRITERIA MANUAL, AND THE DRAINAGE CRITERIA MANUAL VOLUME 2. ANY DEVIATION FROM REGULATIONS AND STANDARDS MUST BE REQUESTED, AND APPROVED, IN WRITING.
3. A SEPARATE STORMWATER MANAGEMENT PLAN (SWMP) FOR THIS PROJECT SHALL BE COMPLETED AND AN EROSION AND STORMWATER QUALITY CONTROL PERMIT (ESQCP) ISSUED PRIOR TO COMMENCING CONSTRUCTION. MANAGEMENT OF THE SWMP DURING CONSTRUCTION IS THE RESPONSIBILITY OF THE DESIGNATED QUALIFIED STORMWATER MANAGER OR CERTIFIED EROSION CONTROL INSPECTOR. THE SWMP SHALL BE LOCATED ON-SITE AT ALL TIMES DURING CONSTRUCTION AND SHALL BE KEPT UP TO DATE WITH WORK PROGRESS AND CHANGES IN THE FIELD.
4. ONCE THE ESQCP IS APPROVED AND A NOTICE TO PROCEED HAS BEEN ISSUED, THE CONTRACTOR MAY INSTALL THE INITIAL EROSION AND SEDIMENT CONTROL MEASURES AS INDICATED ON THE APPROVED GEC. A PRECONSTRUCTION MEETING BETWEEN THE CONTRACTOR, ENGINEER, AND EL PASO COUNTY WILL BE HELD PRIOR TO ANY CONSTRUCTION. IT IS THE RESPONSIBILITY OF THE APPLICANT TO COORDINATE THE MEETING TIME AND PLACE WITH COUNTY STAFF.
5. CONTROL MEASURES MUST BE INSTALLED PRIOR TO COMMENCEMENT OF ACTIVITIES THAT COULD CONTRIBUTE POLLUTANTS TO STORMWATER. CONTROL MEASURES FOR ALL SLOPED, CHANNELS, DITCHES, AND DISTURBED LAND AREAS SHALL BE INSTALLED IMMEDIATELY UPON COMPLETION OF THE DISTURBANCE.
6. ALL TEMPORARY SEDIMENT CONTROL MEASURES SHALL BE MAINTAINED AND REMAIN IN EFFECTIVE OPERATING CONDITION UNTIL PERMANENT SOIL EROSION CONTROL MEASURES ARE IMPLEMENTED AND FINAL STABILIZATION IS ESTABLISHED. ALL PERSONS ENGAGED IN LAND DISTURBANCE ACTIVITIES SHALL ASSESS THE ADEQUACY OF CONTROL MEASURES AT THE SITE AND IDENTIFY IF CHANGES TO THOSE CONTROL MEASURES ARE NEEDED TO ENSURE THE CONTINUED EFFECTIVE PERFORMANCE OF THE CONTROL MEASURES. ALL CHANGES TO TEMPORARY SEDIMENT AND EROSION CONTROL MEASURES MUST BE INCORPORATED INTO THE STORMWATER MANAGEMENT PLAN.
7. TEMPORARY STABILIZATION SHALL BE IMPLEMENTED ON DISTURBED AREAS AND STOCKPILES WHERE GROUND DISTURBING CONSTRUCTION ACTIVITY HAS PERMANENTLY CEASED OR TEMPORARILY CEASED FOR LONGER THAN 14 DAYS.
8. FINAL STABILIZATION MUST BE IMPLEMENTED AT ALL APPLICABLE CONSTRUCTION SITES. FINAL STABILIZATION IS ACHIEVED WHEN ALL GROUND DISTURBING ACTIVITIES ARE COMPLETED AND ALL DISTURBED AREAS EITHER HAVE A UNIFORM VEGETATIVE COVER WITH INDIVIDUAL PLANT DENSITY OF 70 PERCENT OF PRE-DISTURBANCE LEVELS ESTABLISHED OR EQUIVALENT PERMANENT ALTERNATIVE STABILIZATION METHOD IS IMPLEMENTED. ALL TEMPORARY SEDIMENT AND EROSION CONTROL MEASURES SHALL BE REMOVED UPON FINAL STABILIZATION AND BEFORE PERMIT CLOSURE.
9. ALL PERMANENT STORMWATER MANAGEMENT FACILITIES SHALL BE INSTALLED AS DESIGNED IN THE APPROVED PLANS. ANY PROPOSED CHANGES THAT EFFECT THE DESIGN OR FUNCTION OF PERMANENT STORMWATER MANAGEMENT STRUCTURES MUST BE APPROVED BY THE ECM ADMINISTRATOR PRIOR TO IMPLEMENTATION.
10. EARTH DISTURBANCES SHALL BE CONDUCTED IN SUCH A MANNER SO AS TO EFFECTIVELY MINIMIZE ACCELERATED SOIL EROSION AND RESULTING SEDIMENTATION. ALL DISTURBANCES SHALL BE DESIGNED, CONSTRUCTED, AND COMPLETED SO THAT THE EXPOSED AREA OF ANY DISTURBED LAND SHALL BE LIMITED TO THE SHORTEST PRACTICAL PERIOD OF TIME. PRE-EXISTING VEGETATION SHALL NOT BE PROTECTED AND MAINTAINED WITHIN 50 HORIZONTAL FEET OF THE WATERS OF THE STATE UNLESS SHOWN TO BE INFEASIBLE AND SPECIFICALLY REQUESTED AND APPROVED.
11. COMPACTION OF SOIL MUST BE PREVENTED IN AREAS DESIGNATED FOR INFILTRATION CONTROL MEASURES OR WHERE FINAL STABILIZATION WILL BE ACHIEVED BY VEGETATIVE COVER. AREAS DESIGNATED FOR INFILTRATION CONTROL MEASURES SHALL ALSO BE PROTECTED FROM SEDIMENTATION DURING CONSTRUCTION UNTIL FINAL STABILIZATION OF INFILTRATION AND VEGETATIVE CONTROL MEASURES MUST BE LOOSENED PRIOR TO INSTALLATION OF THE CONTROL MEASURE(S).
12. ANY TEMPORARY OR PERMANENT FACILITY DESIGNED AND CONSTRUCTED FOR THE CONVEYANCE OF STORMWATER AROUND, THROUGH, OR FROM THE EARTH DISTURBANCE AREA SHALL BE A STABILIZED CONVEYANCE DESIGNED TO MINIMIZE EROSION AND THE DISCHARGE OF SEDIMENT OFF-SITE.
13. CONCRETE WASH WATER SHALL BE CONTAINED AND DISPOSED OF IN ACCORDANCE WITH THE SWMP. NO WASH WATER SHALL BE DISCHARGED TO OR ALLOWED TO ENTER STATE WATERS, INCLUDING ANY SURFACE OR SUBSURFACE STORM DRAINAGE SYSTEM OR FACILITIES. CONCRETE WASHWATER SHALL NOT BE LOCATED IN AN AREA WHERE SHALLOW GROUNDWATER MAY BE PRESENT, OR WITHIN 50 FEET OF A SURFACE WATER BODY, CREEK OR STREAM.
14. DURING DEWATERING OPERATIONS, UNCONTAMINATED GROUNDWATER MAY BE DISCHARGED ON-SITE, BUT SHALL NOT LEAVE THE SITE IN THE FORM OF SURFACE RUNOFF UNLESS AN APPROVED STATE DEWATERING PERMIT IS IN PLACE.
15. EROSION CONTROL BLANKETING OR OTHER PROTECTIVE COVERING SHALL BE USED ON SLOPES STEEPER THAN 3:1.
16. CONTRACTOR SHALL BE RESPONSIBLE FOR THE REMOVAL OF ALL WASTES FROM THE CONSTRUCTION SITE FOR DISPOSAL IN ACCORDANCE WITH LOCAL AND STATE REGULATORY REQUIREMENTS. TO CONSTRUCTION DEBRIS, TREE SLASH, BUILDING MATERIAL WASTES OR UNUSED BUILDING MATERIALS SHALL BE BURIED, DUMPED, OR DISCHARGED AT THE SITE.
17. WASTE MATERIALS SHALL NOT BE TEMPORARILY PLACED OR STORED IN THE STREET, ALLEY, OR OTHER PUBLIC WAY, UNLESS IN ACCORDANCE WITH AN APPROVED TRAFFIC CONTROL PLAN. CONTROL MEASURES MAY BE REQUIRED BY EL PASO COUNTY ENGINEERING IF DEEMED NECESSARY, BASED ON SPECIFIC CONDITIONS AND CIRCUMSTANCES.
18. TRACKING OF SOILS AND CONSTRUCTION DEBRIS OFF-SITE SHALL BE MINIMIZED. MATERIALS TRACKED OFF-SITE SHALL BE CLEANED UP AND PROPERLY DISPOSED OF IMMEDIATELY.
19. THE OWNER/DEVELOPER SHALL BE RESPONSIBLE FOR THE REMOVAL OF ALL CONSTRUCTION DEBRIS, DIRT, ROCK, TRASH, SEDIMENT, SAND AND SAND THAT MAY ACCUMULATE IN ROADS, STORM DRAINS AND OTHER DRAINAGE CONVEYANCE SYSTEMS AND STORMWATER APPURTENANCES AS A RESULT OF SITE DEVELOPMENT.
20. THE QUANTITY OF MATERIALS STORED ON THE PROJECT SITE SHALL BE LIMITED, AS MUCH AS PRACTICAL, TO THE QUANTITY REQUIRED TO PERFORM THE WORK IN AN ORDERLY SEQUENCE. ALL MATERIALS STORED ON-SITE SHALL BE STORED IN A NEAT, ORDERLY MANNER, IN THEIR ORIGINAL CONTAINERS, WITH ORIGINAL MANUFACTURER'S LABELS.
21. NO CHEMICAL(S) HAVING THE POTENTIAL TO BE RELEASED IN STORMWATER ARE TO BE STORED OR USED ON-SITE UNLESS PERMISSION FOR THE USE OF SUCH CHEMICAL(S) IS GRANTED IN WRITING BY THE ECM ADMINISTRATOR. IN GRANTING APPROVAL FOR THE USE OF SUCH CHEMICAL(S), SPECIAL CONDITIONS AND MONITORING MAY BE REQUIRED.
22. BULK STORAGE OF ALLOWED PETROLEUM PRODUCTS OR OTHER ALLOWED LIQUID CHEMICALS IN EXCESS OF 55 GALLONS SHALL REQUIRE ADEQUATE SECONDARY CONTAINMENT PROTECTION TO CONTAIN ALL SPILLS ON-SITE AND TO PREVENT ANY SPILLED MATERIALS FROM ENTERING STATE WATERS, ANY SURFACE OR SUBSURFACE STORM DRAINAGE SYSTEM OR OTHER FACILITIES.
23. NO PERSON SHALL CAUSE THE IMPEDIMENT OF STORMWATER FLOW IN THE CURB AND GUTTER OR DITCH EXCEPT WITH APPROVED SEDIMENT CONTROL MEASURES.
24. OWNER/DEVELOPER AND THEIR AGENTS SHALL COMPLY WITH THE COLORADO WATER QUALITY CONTROL ACT (TITLE 25, ARTICLE 8, CRS), AND THE CLEAN WATER ACT (33 USC 1344), IN ADDITION TO THE REQUIREMENTS OF THE LAND DEVELOPMENT CODE, DCM VOLUME II AND THE ECM APPENDIX I. ALL APPROPRIATE PERMITS MUST BE OBTAINED BY THE CONTRACTOR PRIOR TO CONSTRUCTION (DOH, NPDES, FLOODPLAIN, 404, FUGITIVE DUST, ETC.). IN THE EVENT OF CONFLICTS BETWEEN THESE REQUIREMENTS AND OTHER LAWS, RULES, OR REGULATIONS OF OTHER FEDERAL, STATE, LOCAL, OR COUNTY AGENCIES, THE MOST RESTRICTIVE LAWS, RULES, OR REGULATIONS SHALL APPLY.
25. ALL CONSTRUCTION TRAFFIC MUST ENTER/EXIT THE SITE ONLY AT APPROVED CONSTRUCTION POINTS. PRIOR TO CONSTRUCTION THE PERMITTEE SHALL VERIFY THE LOCATION OF EXISTING UTILITIES.
26. A WATER SOURCE SHALL BE AVAILABLE ON-SITE DURING EARTHWORK OPERATIONS AND SHALL BE UTILIZED AS REQUIRED TO MINIMIZE DUST FROM THE EARTHWORK EQUIPMENT AND WIND.
27. THE SOILS REPORT FOR THE SITE HAS BEEN PREPARED BY RMG-ROCKY MOUNTAIN GROUP, DATED 2/23/2021 AND SHALL BE CONSIDERED A PART OF THESE PLANS.
28. AT LEAST TEN (1) DAYS PRIOR TO THE ANTICIPATED START OF CONSTRUCTION, FOR PROJECTS THAT WILL DISTURB ONE (1) ACRE OR MORE, THE OWNER OR OPERATOR OF CONSTRUCTION ACTIVITY SHALL SUBMIT A PERMIT APPLICATION FOR STORMWATER DISCHARGE TO THE COLORADO DEPARTMENT OF PUBLIC HEALTH AND ENVIRONMENT, WATER QUALITY DIVISION. THE APPLICATION CONTAINS CERTIFICATION OF COMPLETION OF A STORMWATER MANAGEMENT PLAN (SWMP), OF WHICH THIS GRADING AND EROSION CONTROL PLAN MAY BE A PART. FOR INFORMATION OF APPLICATION MATERIALS CONTACT: COLORADO DEPARTMENT OF PUBLIC HEALTH AND ENVIRONMENT WATER QUALITY CONTROL DIVISION WQCD-PERMITS 4300 CHERRY CREEK DRIVE SOUTH DENVER, CO 80246-1530 ATTN: PERMITS UNIT

EL PASO COUNTY

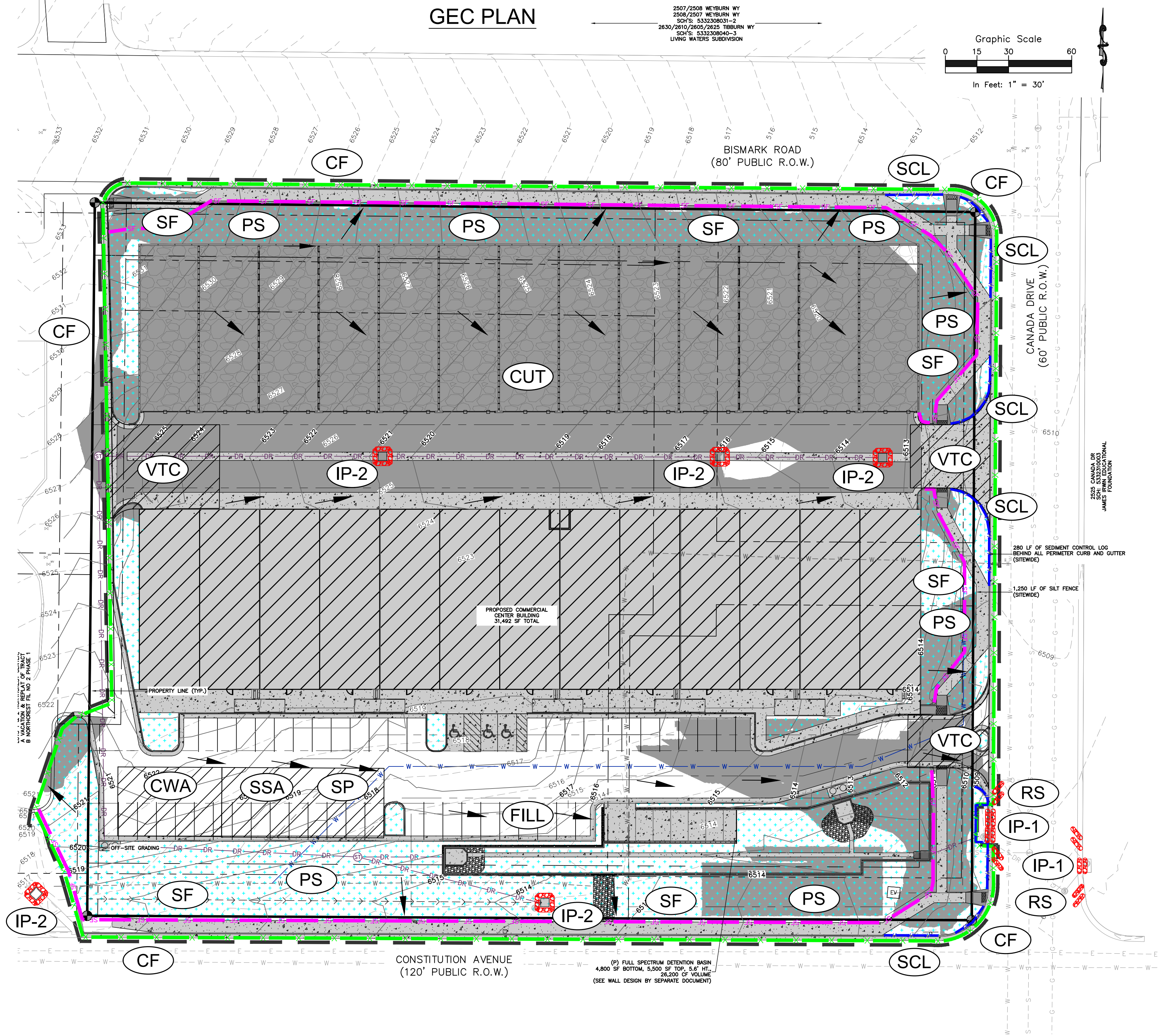
COUNTY PLAN REVIEW IS PROVIDED ONLY FOR GENERAL CONFORMANCE WITH COUNTY DESIGN CRITERIA. THE COUNTY IS NOT RESPONSIBLE FOR THE ACCURACY AND ADEQUACY OF THE DESIGN, DIMENSIONS, AND/OR ELEVATIONS WHICH SHALL BE CONFIRMED AT THE JOB SITE. THE COUNTY THROUGH THE APPROVAL OF THIS DOCUMENT ASSUMES NO RESPONSIBILITY FOR COMPLETENESS AND/OR ACCURACY OF THIS DOCUMENT.

FILED IN ACCORDANCE WITH THE REQUIREMENTS OF THE EL PASO COUNTY LAND DEVELOPMENT CODE, DRAINAGE CRITERIA VOLUMES 1 AND 2, AND ENGINEERING CRITERIA MANUAL AS AMENDED.

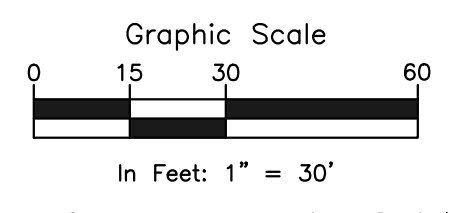
IN ACCORDANCE WITH EGM SECTION 1.12, THESE CONSTRUCTION DOCUMENTS WILL BE VALID FOR CONSTRUCTION FOR A PERIOD OF 2 YEARS FROM THE DATE SIGNED BY THE EL PASO COUNTY ENGINEER. IF CONSTRUCTION HAS NOT STARTED WITHIN THOSE 2 YEARS, THE PLANS WILL NEED TO BE RESUBMITTED FOR APPROVAL, INCLUDING PAYMENT OF REVIEW FEES AT THE PLANNING AND COMMUNITY DEVELOPMENT DIRECTOR'S DISCRETION.

JENNIFER IRVINE, PE COUNTY ENGINEER/ECM ADMINISTRATOR DATE

GEC PLAN



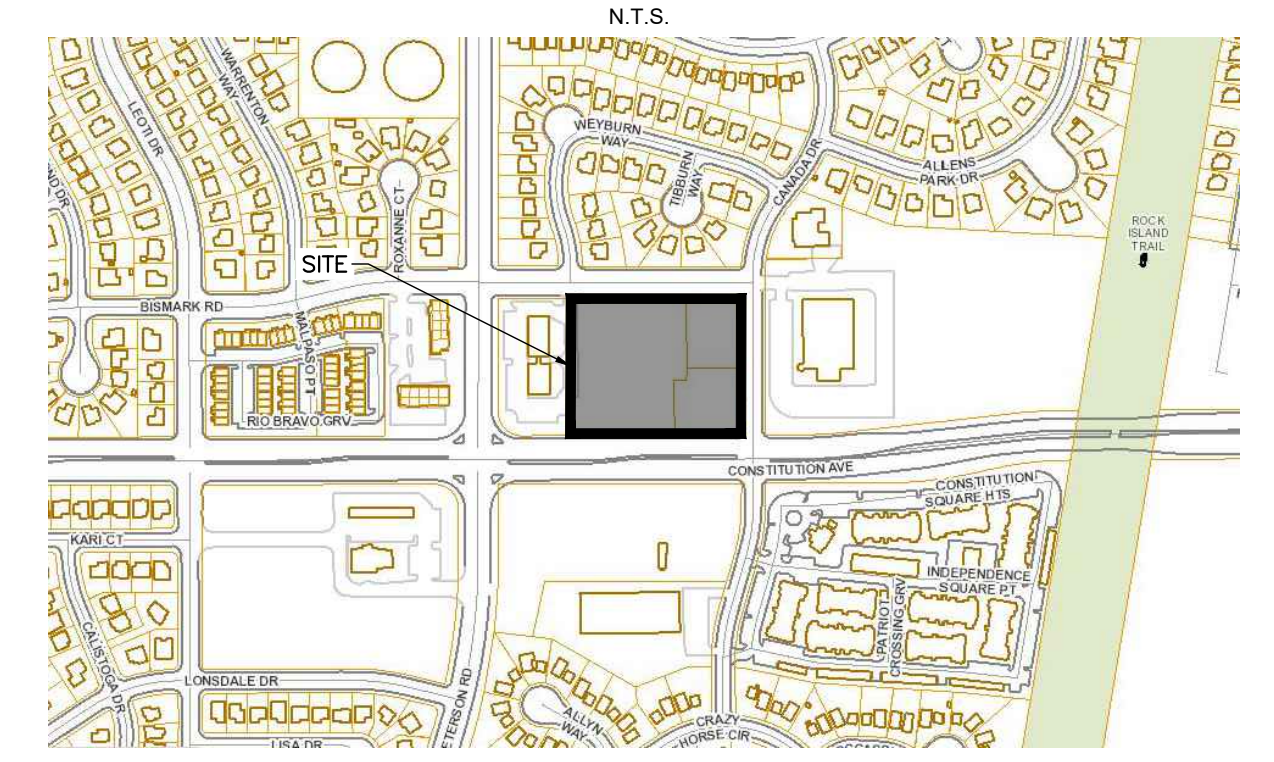
2507/2508 WEYBURN WY 2508/2507 WEYBURN WY SCH'S 5332308031-2 2630/2610/2605/2625 1080URN WY SCH'S 533230804-2 LIVING WATERS SUBDIVISION



RESTORATION NOTES

- 1. FURTHER DETAIL AND NOTES PROVIDED IN THE DRAINAGE CRITERIA MANUAL VOLUME III, CHAPTER 14.
2. SEE SEED MIX TABLES 14-9 THROUGH 14-14 FOR GIVEN GEOGRAPHIC AND GEOLOGIC CONDITIONS IN THE DRAINAGE CRITERIA MANUAL VOLUME III, CHAPTER 14.
3. UNLINED DRAINAGE FACILITIES AND AREAS DISTURBED DURING CONSTRUCTION SHOULD BE ACTIVELY REVEGETATED. SEED MIXES SHOULD BE SELECTED TO MATCH THE CONDITIONS WHERE THEY WILL BE USED. RECOMMENDED SEED MIXES FOR THE BOTTOM (WET SOILS) AND SIDE SLOPES OF DRAINAGE FACILITIES ARE INCLUDED IN TABLES 14-9 AND 14-10, RESPECTIVELY. SEED MIXES FOR ALKALI SOILS AND ALL OTHER SOIL CONDITIONS IN UPLAND AREAS ARE PROVIDED IN TABLES 14-11 AND 14-12, RESPECTIVELY. MULTIFLOWER MIXES ARE PROVIDED IN TABLE 14-13. THE SEEDING RATES IN THESE MIXES ARE RECOMMENDED MINIMUM RATES FOR DRILL SEEDING. THESE RATES SHOULD BE DOUBLED FOR BROADCAST SEEDING AND HYDRO-SEEDING IN SMALL AREAS OR STEEP CONDITIONS WITH SLOPES GREATER THAN 3H:1V.
4. THE RECOMMENDED SEED MIXES ARE SUITABLE FOR THE COLORADO FRONT RANGE FOR SITES FROM 4,800 TO 7,000 FT. IN ELEVATION. APPLICATIONS OUTSIDE THESE RANGES SHOULD BE MADE AFTER CONSULTATION WITH A QUALIFIED REVEGETATION SPECIALIST.
5. FALL IS THE PREFERRED TIME FOR NON-IRRIGATED SEEDING. LATE SUMMER SEEDBED PREPARATION FOLLOWED BY INSTALLATION OF THE SEED IN THE FALL (OCTOBER) ALLOWS WINTER MONTHS FOR ADDITIONAL FIRING OF THE SEEDBED BEFORE SPRING AND GERMINATION. FALL SEEDING BENEFITS FROM WINTER, SPRING MOISTURE, AND USUALLY ASSURES MAXIMUM SOIL MOISTURE AVAILABILITY FOR ESTABLISHMENT.
6. LATE WINTER TO EARLY SPRING (FEBRUARY TO EARLY APRIL) IS TYPICALLY THE NEXT MOST FAVORABLE TIME PERIOD FOR SEEDING. WINTER AND EARLY SPRING SEEDING SHOULD NOT BE CONDUCTED IF THE SOIL IS FROZEN, SNOW COVERED, OR WET (MUDDY). WHILE OF GREATER RISK, SPRING SEEDING (MID-APRIL INTO EARLY JUNE) CAN BE SUCCESSFUL, ESPECIALLY DURING MOIST YEARS. MID- TO LATE SUMMER SEEDING CAN BE SUCCESSFUL WITH ADEQUATE PRECIPITATION. CHAPTER 14 REVEGETATION MAY 2014 CITY OF COLORADO SPRINGS 14-21 DRAINAGE CRITERIA MANUAL, VOLUME II OR IRRIGATION TO WET AND SETTLE THE SEED BED. FIRING OF THE SEEDBED FOLLOWING SEEDING WILL IMPROVE RESULTS DURING DRY OR WARM SEEDING TIMES.
7. CONTRACTOR SHALL BE FAMILIAR WITH THE CUT/FILL OF THE PROPOSED CONDITIONS IN ORDER TO MINIMIZE STOCKPILING OF EXCAVATED DIRT. SITE IS DRY OUT AND STOCKPILING OVERNIGHT IS NOT PERMITTED WITHOUT PERMISSION FROM THE CITY OF COLORADO SPRINGS.

VICINITY MAP



Rocky Mountain Group logo and contact info. Colorado License 51909 for Civil Only. Project Name: COVER. Design Development. Sheet No: C-01 of 12.

**EROSION CONTROL LEGEND**

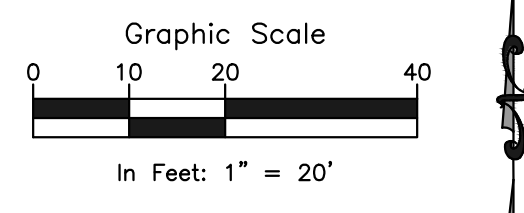
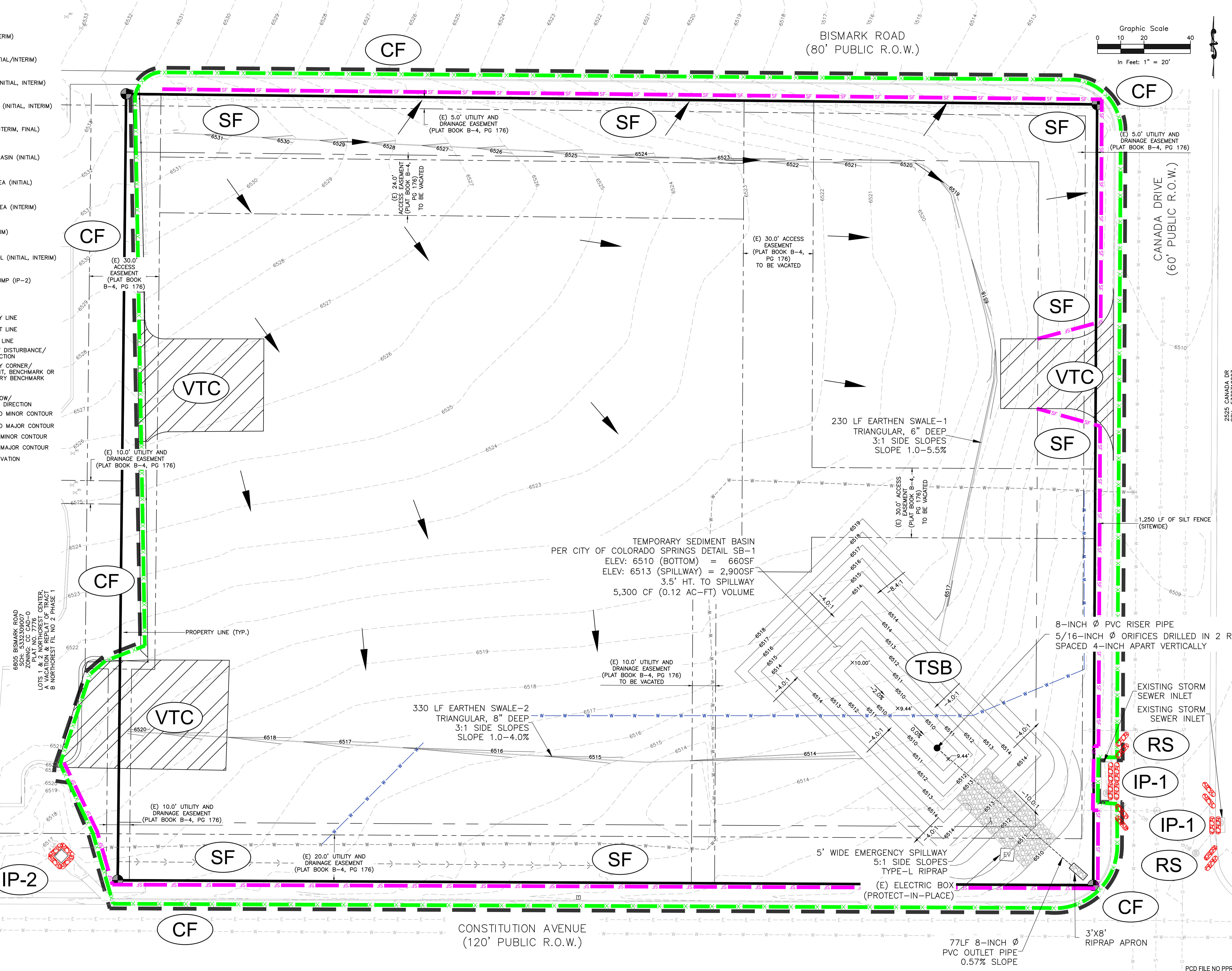
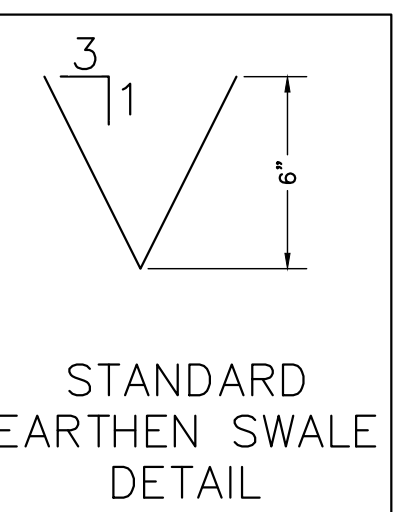
- SF SILT FENCE (INITIAL/INTERIM)
- RS CURB ROCK SOCKS (INITIAL/INTERIM)
- CF CONSTRUCTION FENCE (INITIAL, INTERIM)
- SCL SEDIMENT CONTROL LOG (INITIAL, INTERIM)
- PS PERMANENT SEEDING (INTERIM, FINAL)
- TSB TEMPORARY SEDIMENT BASIN (INITIAL)
- SSA STABILIZED STAGING AREA (INITIAL)
- CWA CONCRETE WASHOUT AREA (INTERIM)
- SP STOCKPILE AREA (INTERIM)
- VTC VEHICLE TRACK CONTROL (INITIAL, INTERIM)
- IP-# ON-GRADE (IP-1) & SUMP (IP-2) INLET PROTECTION (INITIAL/INTERIM)

**LEGEND**

- PROPERTY LINE
- EASEMENT LINE
- SETBACK LINE
- LIMITS OF DISTURBANCE/CONSTRUCTION
- PROPERTY CORNER/MONUMENT, BENCHMARK OR TEMPORARY BENCHMARK
- SHEET FLOW/DRAINAGE DIRECTION
- PROPOSED MINOR CONTOUR
- PROPOSED MAJOR CONTOUR
- EXISTING MINOR CONTOUR
- EXISTING MAJOR CONTOUR
- SPOT ELEVATION

**SITE HATCHING**

- AREAS OF CUT **CUT**
- AREAS OF FILL **FILL**
- PROP. STRUCTURE/BUILDING
- PROP. SIDEWALK



**ROCKY MOUNTAIN GROUP**  
ARCHITECTS  
**RMG** ENGINEERS  
Architectural  
Structural  
Forensics

2910 AUSTIN BLUFFS PARKWAY, COLORADO SPRINGS, CO 80918  
WWW.ROCKYMOUNTAINENGINEERS.COM  
SUSTAINABLE ARCHITECTURE • DESIGN • PLANNING • CONSTRUCTION

COLORADO LICENSE  
DAVID GENAID WALKER  
1/12/23  
51909  
FOR CIVIL ONLY

**NORTHEAST PEMB DEVELOPMENT**  
2510 & 2522 CANADA DRIVE  
COLORADO SPRINGS, COLORADO  
LEISURE CONSTRUCTION

2525 CANADA DR  
SCH: 5332310003  
JAMES IRWIN EDUCATIONAL FOUNDATION

PROJECT STATUS  
**EROSION CONTROL PLAN - INITIAL**  
DESIGN DEVELOPMENT

ENG:	DGW	
DRAWN:	TPT	
CHECKED:	DGW	
DATE:	01/12/2023	
#	REVISION	DATE
JOB NO.	180649	
SHEET NO.	C-02	of 12

PCD FILE NO PPR-21-036

LAST SAVED: 1/12/2023 11:08:41 AM PATH: T:\Projects\Site Specific\2020\04\Leisure Construction\180649\PCD\Drawings\180649-SS-Consultation Avenue Project-GEC-Cover.dwg

These plans are copyrighted 2020 by General Engineers Inc. dba RMG - Rocky Mountain Group all rights reserved. Any sale, reproduction, creation of derivative works based on these plans, or use of these plans for any purpose without proper compensation to and the express written consent of RMG, is strictly prohibited.

**EROSION CONTROL LEGEND**

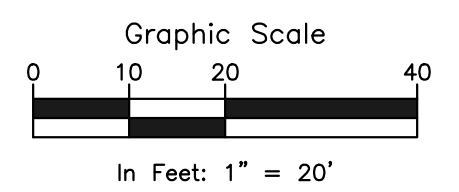
- SF** — SILT FENCE (INITIAL/INTERIM)
- RS** — CURB ROCK SOCKS (INITIAL/INTERIM)
- CF** — CONSTRUCTION FENCE (INITIAL, INTERIM)
- SCL** — SEDIMENT CONTROL LOG (INITIAL, INTERIM)
- PS** — PERMANENT SEEDING (INTERIM, FINAL)
- TSB** — TEMPORARY SEDIMENT BASIN (INITIAL)
- SSA** — STABILIZED STAGING AREA (INITIAL)
- CWA** — CONCRETE WASHOUT AREA (INTERIM)
- SP** — STOCKPILE AREA (INTERIM)
- VTC** — VEHICLE TRACK CONTROL (INITIAL, INTERIM)
- IP-#** — ON-GRADE (IP-1) & SUMP (IP-2) INLET PROTECTION (INITIAL/INTERIM)

- LEGEND**
- PROPERTY LINE
  - - - EASEMENT LINE
  - - - SETBACK LINE
  - - - LIMITS OF DISTURBANCE/CONSTRUCTION
  - PROPERTY CORNER/MONUMENT, BENCHMARK OR TEMPORARY BENCHMARK
  - SHEET FLOW/DRAINAGE DIRECTION
  - PROPOSED MINOR CONTOUR
  - - - PROPOSED MAJOR CONTOUR
  - - - EXISTING MINOR CONTOUR
  - - - EXISTING MAJOR CONTOUR
  - × SPOT ELEVATION

- SITE HATCHING**
- ▨ AREAS OF CUT (**CUT**)
  - AREAS OF FILL (**FILL**)
  - ▨ PROP. STRUCTURE/BUILDING
  - ▨ PROP. SIDEWALK



BISMARCK ROAD  
(80' PUBLIC R.O.W.)



CANADA DRIVE  
(60' PUBLIC R.O.W.)

CONSTITUTION AVENUE  
(120' PUBLIC R.O.W.)

**ROCKY MOUNTAIN GROUP**  
ARCHITECTS  
**RMG ENGINEERS**  
GENERALIST  
Structural  
Forensics  
2910 AUSTIN BLUFFS PARKWAY, COLORADO SPRINGS, CO 80918  
WWW.ROCKYMOUNTAINENGINEERS.COM  
SUSTAINABLE. INNOVATIVE. DRIVEN BY PASSION.

COLORADO LICENSE  
DAVID GERALD WALKER  
1/12/23  
51909  
FOR CIVIL ONLY

2525 CANADA DR  
SCH: 5332310003  
JAMES IRWIN EDUCATIONAL FOUNDATION

**NORTHEAST PEMB DEVELOPMENT**  
2510 & 2522 CANADA DRIVE  
COLORADO SPRINGS, COLORADO  
LEISURE CONSTRUCTION

SHEET NAME  
**EROSION CONTROL PLAN - INTERIM**

PROJECT STATUS  
**DESIGN DEVELOPMENT**

ENG:	DGW	
DRAWN:	TPT	
CHECKED:	DGW	
DATE:	01/12/2023	
#	REVISION	DATE
JOB NO.:	180649	
SHEET NO.:	C-03	

of 12

LAST SAVED: 11/12/2023 11:04:41 AM PATH: T:\Projects\Site\_Spec\20230114\Leisure\_Construction\180649\CD\Drawings\From\_RMG\Sheet\_Spec\EGC\180649-SS-Construction\_Avenue\_Proposed\_Erosion\_Control.dwg

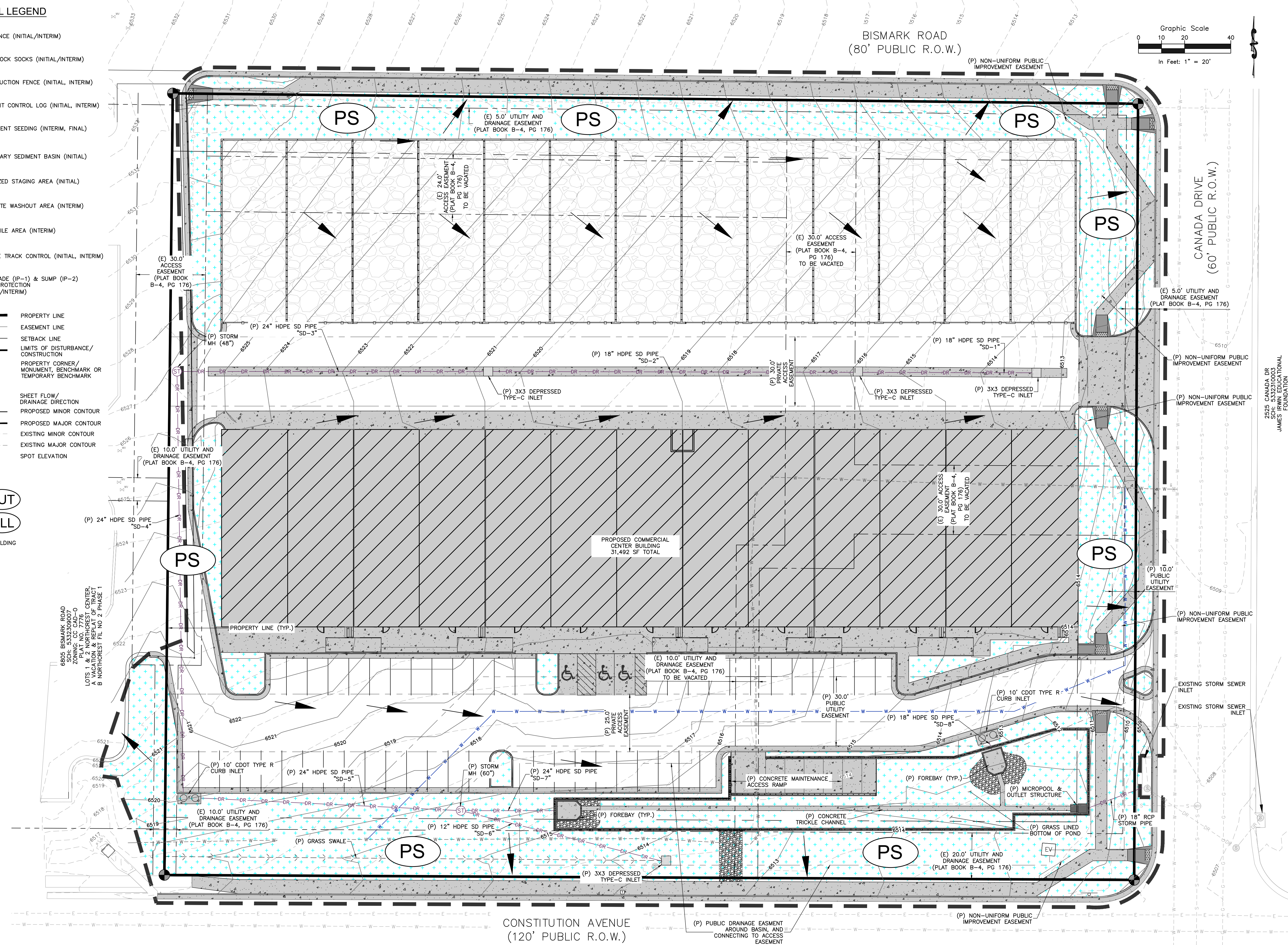
These plans are copyrighted 2020 by Generalist Engineers Inc. dba RMG - Rocky Mountain Group all rights reserved. Any sale, reproduction, creation of derivative works based on these plans, or use of these plans for any purpose without proper compensation to and the express written consent of RMG, is strictly prohibited.

**EROSION CONTROL LEGEND**

- SF** SILT FENCE (INITIAL/INTERIM)
- RS** CURB ROCK SOCKS (INITIAL/INTERIM)
- CF** CONSTRUCTION FENCE (INITIAL, INTERIM)
- SCL** SEDIMENT CONTROL LOG (INITIAL, INTERIM)
- PS** PERMANENT SEEDING (INTERIM, FINAL)
- TSB** TEMPORARY SEDIMENT BASIN (INITIAL)
- SSA** STABILIZED STAGING AREA (INITIAL)
- CWA** CONCRETE WASHOUT AREA (INTERIM)
- SP** STOCKPILE AREA (INTERIM)
- VTC** VEHICLE TRACK CONTROL (INITIAL, INTERIM)
- IP-#** ON-GRADE (IP-1) & SUMP (IP-2) INLET PROTECTION (INITIAL/INTERIM)

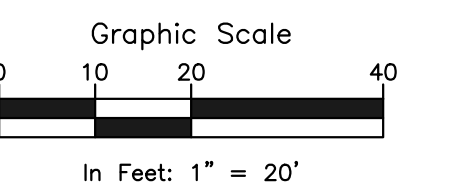
- LEGEND**
- PROPERTY LINE
  - EASEMENT LINE
  - SETBACK LINE
  - LIMITS OF DISTURBANCE/CONSTRUCTION
  - PROPERTY CORNER/MONUMENT, BENCHMARK OR TEMPORARY BENCHMARK
  - BM
  - SHEET FLOW/ DRAINAGE DIRECTION
  - PROPOSED MINOR CONTOUR
  - PROPOSED MAJOR CONTOUR
  - EXISTING MINOR CONTOUR
  - EXISTING MAJOR CONTOUR
  - SPOT ELEVATION

- SITE HATCHING**
- AREAS OF CUT **CUT**
  - AREAS OF FILL **FILL**
  - PROP. STRUCTURE/BUILDING
  - PROP. SIDEWALK



6805 BISMARCK ROAD  
 SCH. 5332300077  
 ZONING: CC CAD-0  
 PLAT NO. 7776  
 VACATING 22 MONUMENTS CENTER,  
 B NORTHWEST 1/4 OF TRACT  
 B NORTHWEST 1/4 OF TRACT 1

BISMARCK ROAD  
 (80' PUBLIC R.O.W.)



CONSTITUTION AVENUE  
 (120' PUBLIC R.O.W.)

CANADA DRIVE  
 (60' PUBLIC R.O.W.)

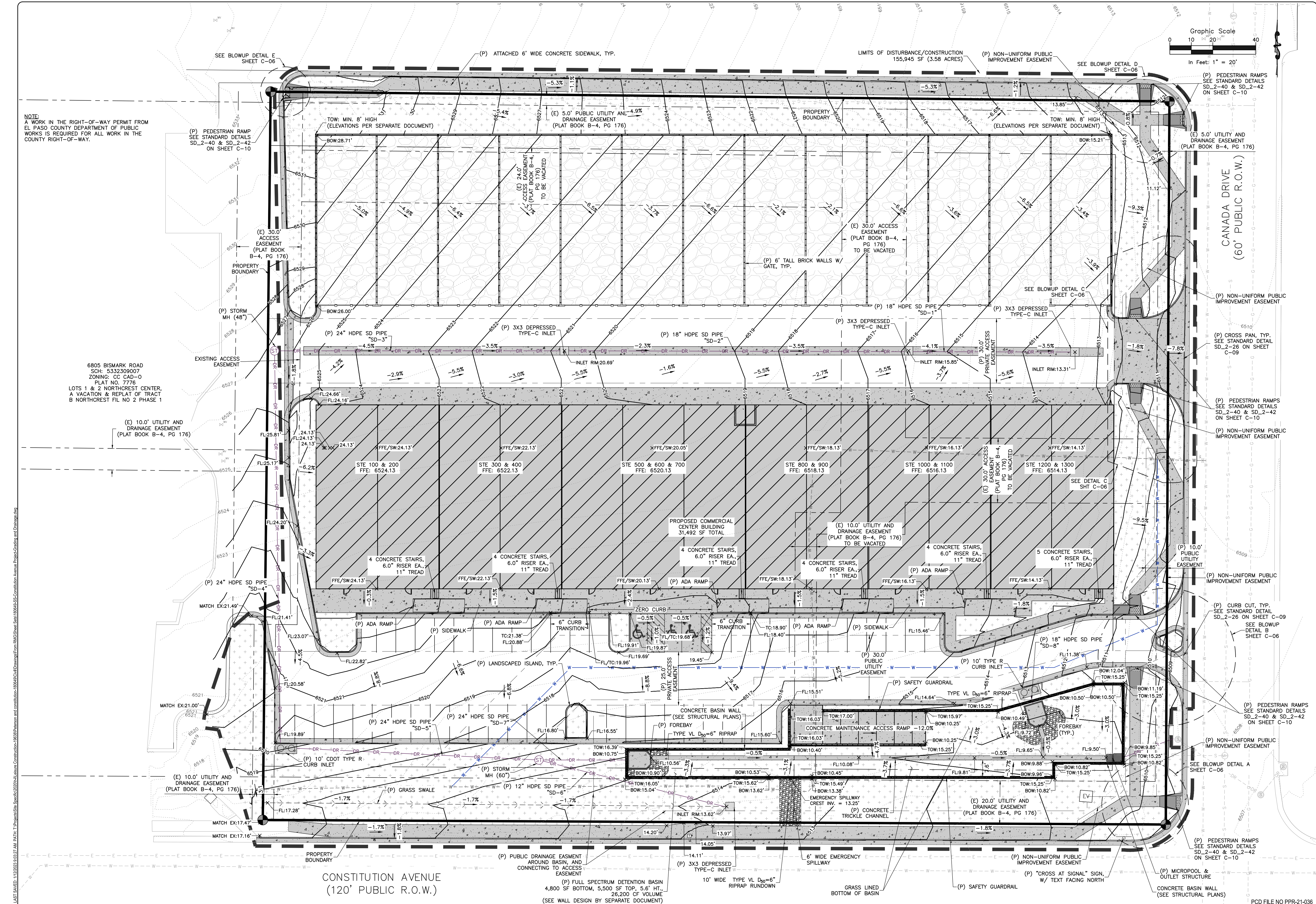
**ROCKY MOUNTAIN GROUP**  
 ARCHITECTS  
**RMG**  
 ENGINEERS  
 Geological  
 Materials Testing  
 Civil Training  
 Architectural  
 Structural  
 Forensics  
 2910 AUSTIN BLUFFS PARKWAY, COLORADO SPRINGS, CO 80918  
 (719) 533-6600 WWW.ROCKYMOUNTAINENGINEERS.COM  
 Structural Engineering, Driveway Design, Right-of-Way, Easements



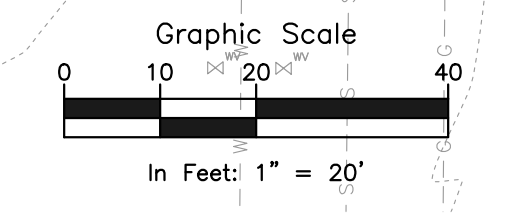
**NORTHWEST PEMB DEVELOPMENT**  
 2510 & 2522 CANADA DRIVE  
 COLORADO SPRINGS, COLORADO  
 LEISURE CONSTRUCTION

**EROSION CONTROL PLAN - FINAL**  
 DESIGN DEVELOPMENT

ENG:	DGW	
DRAWN:	TPT	
CHECKED:	DGW	
DATE:	01/12/2023	
#	REVISION	DATE
JOB NO.:	180649	
SHEET NO.:	C-04	
of 12		



NOTE:  
A WORK IN THE RIGHT-OF-WAY PERMIT FROM EL PASO COUNTY DEPARTMENT OF PUBLIC WORKS IS REQUIRED FOR ALL WORK IN THE COUNTY RIGHT-OF-WAY.



6805 BISMARCK ROAD  
SCH: 5332309007  
ZONING: CC CAD-0  
PLAT NO. 7776  
LOTS 1 & 2 NORTHEAST CENTER, A VACATION & REPLAT OF TRACT B NORTHEAST FIL NO 2 PHASE 1

CONSTITUTION AVENUE  
(120' PUBLIC R.O.W.)

LAST SAVED: 11/23/2023 9:32:27 AM D:\PATH\_T\Projects\Sub-Station\11829\Plan and Const\11829-Civil\Drawings\11829-Civil-SS-Creation\Avenue Project-Grading and Drainage.dwg

ROCKY MOUNTAIN GROUP

Architectural  
Structural  
Forensics

1/12/23  
51909

FOR CIVIL ONLY

SOUTHERN COLORADO  
2910 ALBURN BLUFFS PARKWAY, COLORADO SPRINGS, CO 80918  
WWW.RMGENGINEERS.COM  
SOUTHERN COLORADO ENGINEERING, ARCHITECTURE & FORENSICS

NORTHEAST PEMB DEVELOPMENT

2510 & 2522 CANADA DRIVE  
COLORADO SPRINGS, COLORADO

LEISURE CONSTRUCTION

PRELIMINARY GRADING &  
DRAINAGE

DESIGN DEVELOPMENT

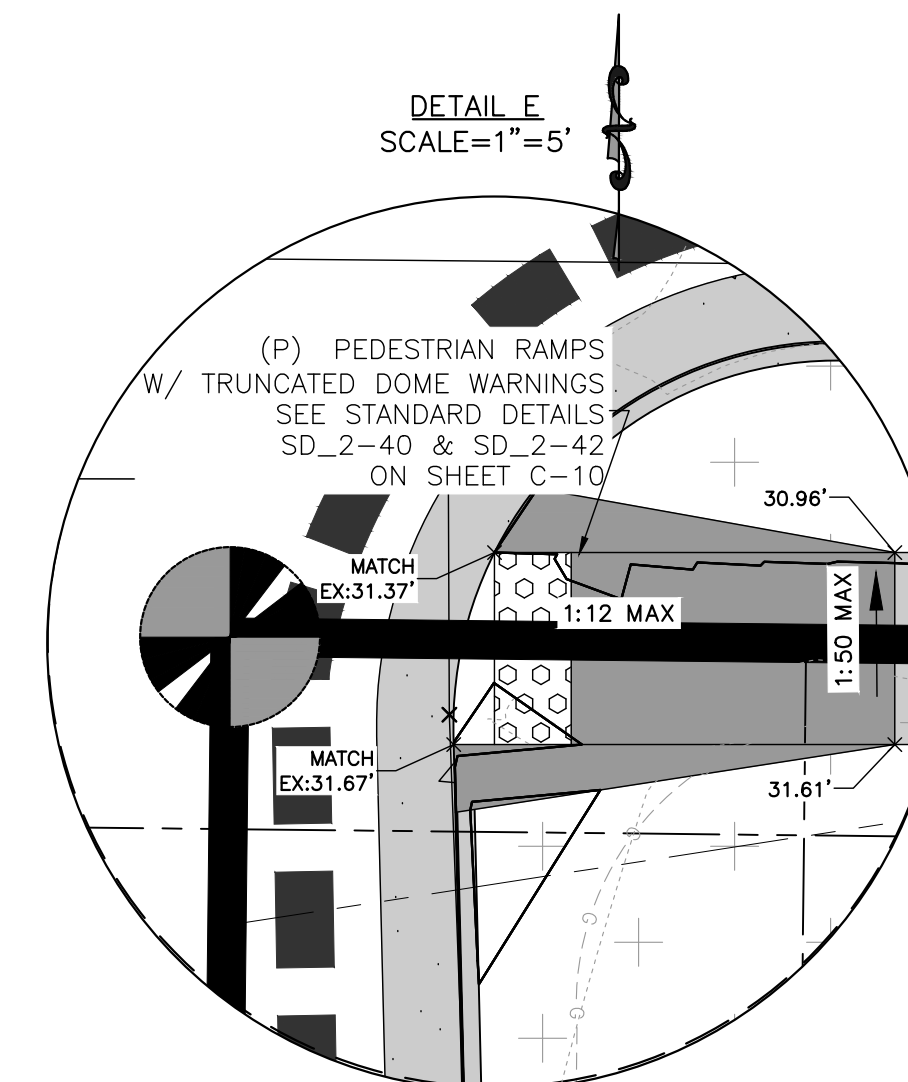
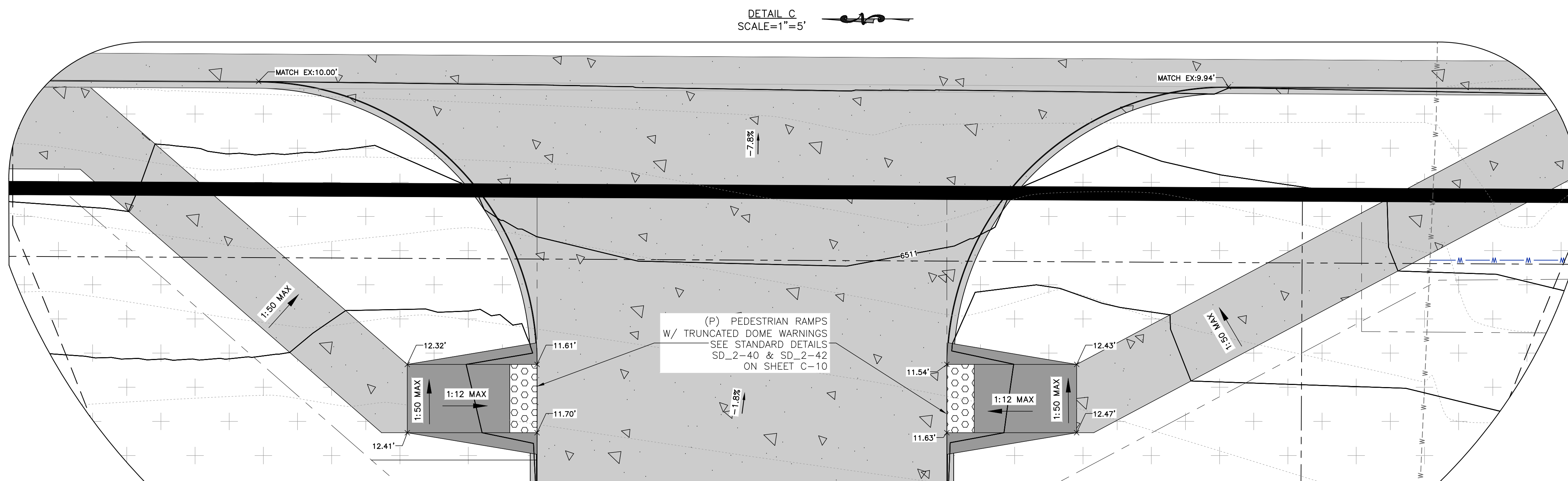
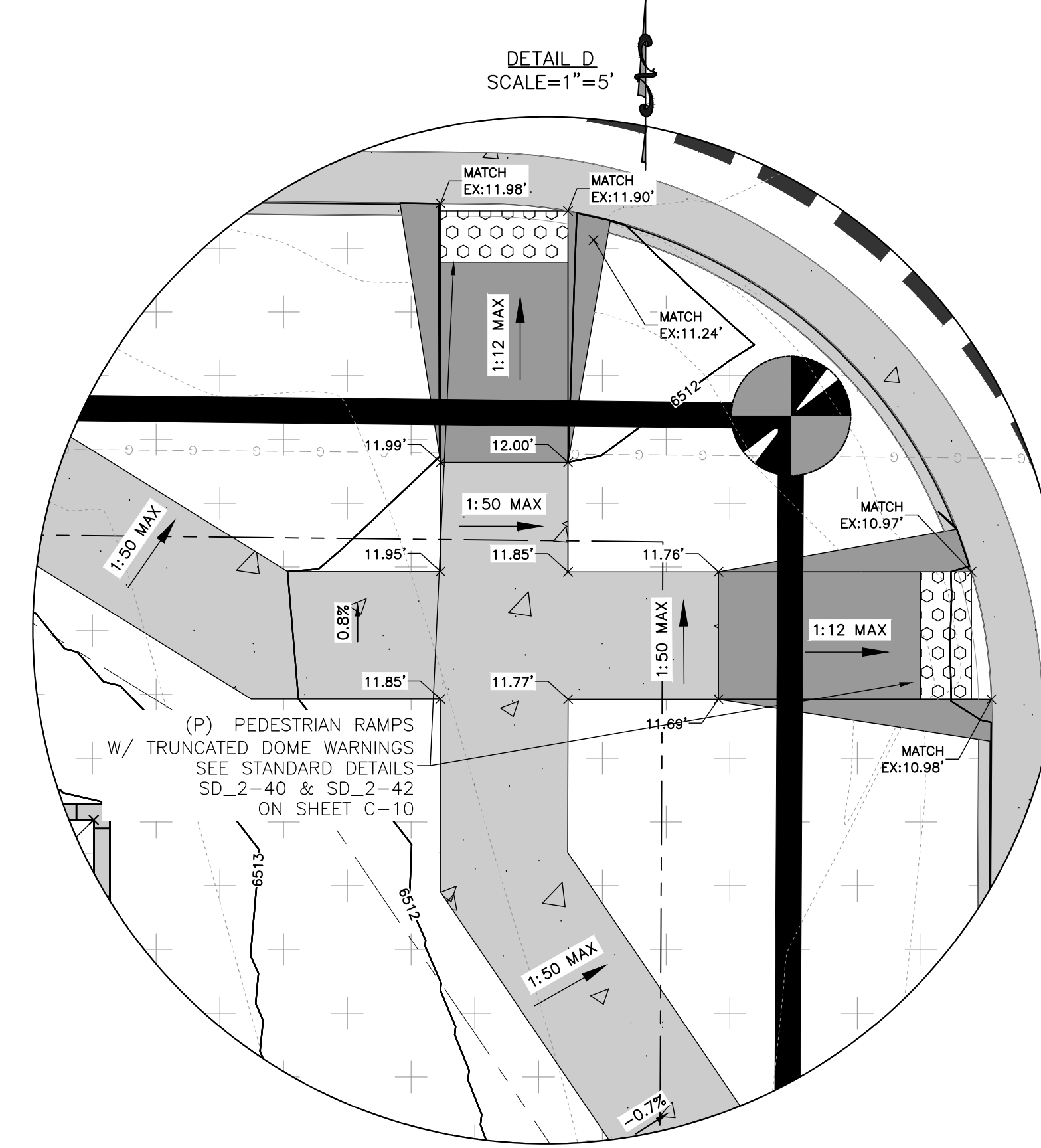
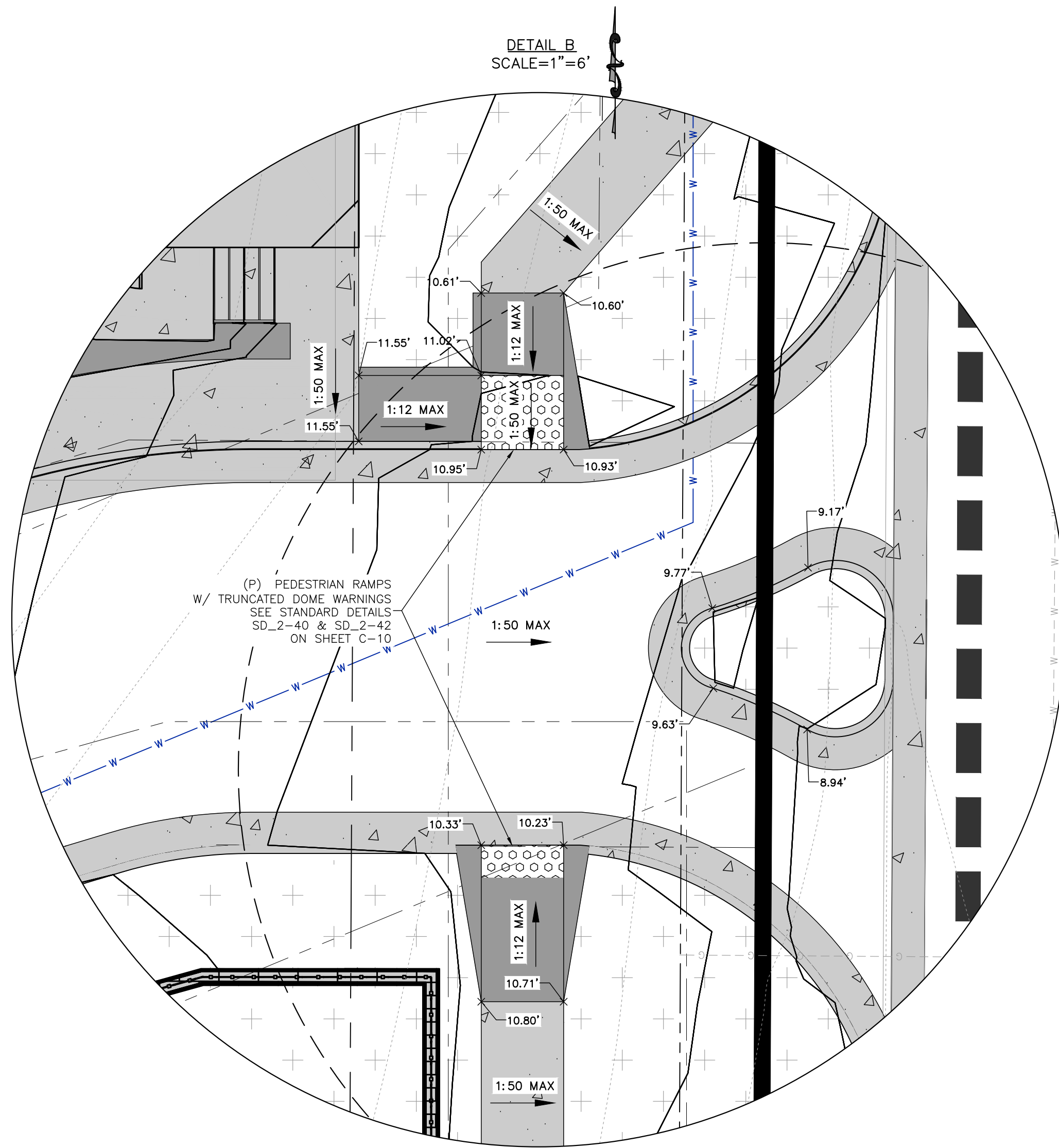
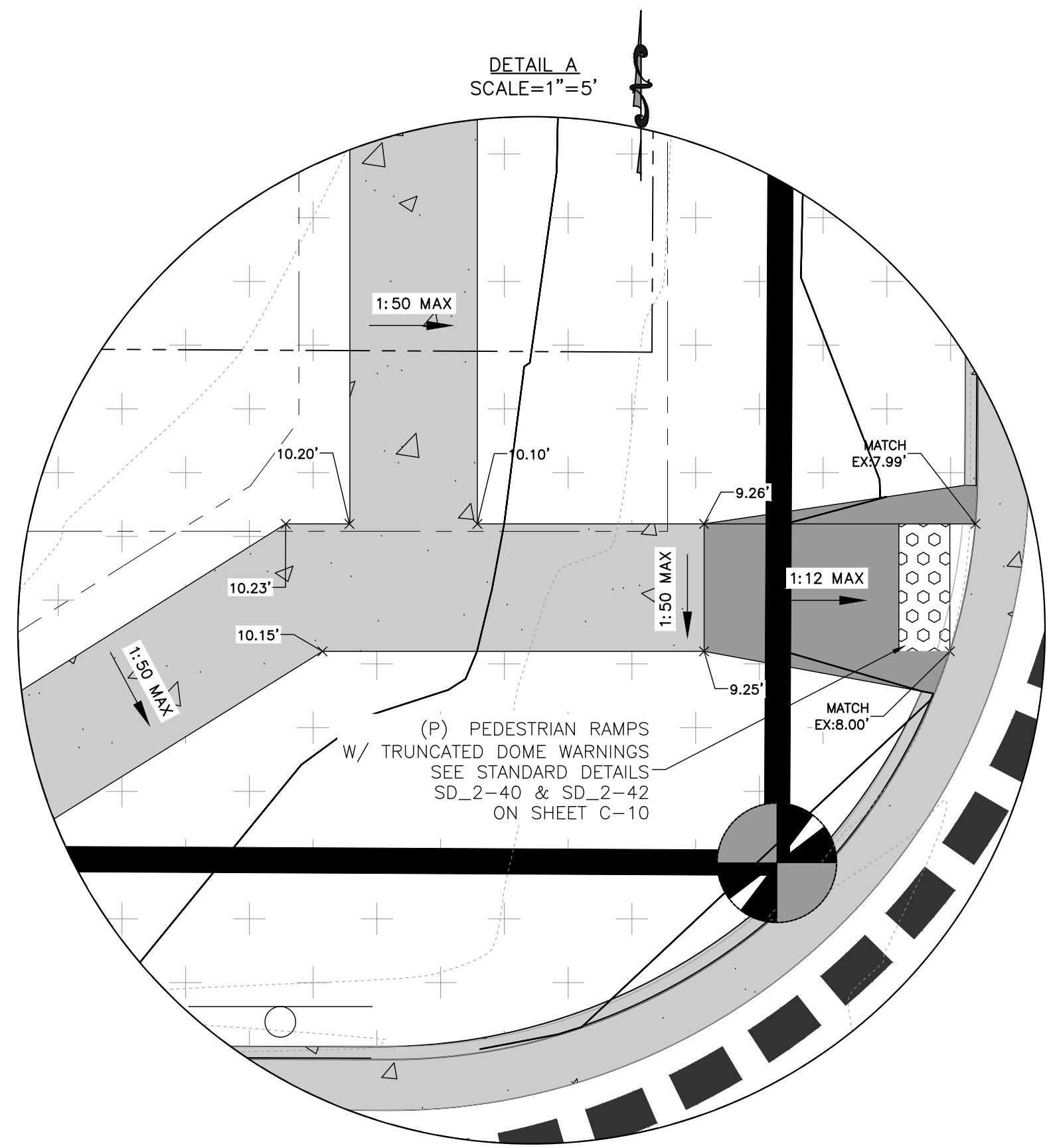
#	REVISION	DATE

JOB NO. 180649

SHEET NO. C-05

PCD FILE NO PPR-21-036

LAST SAVED: 11/12/2023 9:52:37 AM PATH: T:\Projects\Site Specific\2020\Hilbert Construction\18064\CD\Drawings\18064-SS-Civil\SS-Civil\Grading and Drainage.dwg



**ROCKY MOUNTAIN GROUP**  
ARCHITECTS  
ENGINEERS

Geotechnical  
Materials Testing  
Civil Planning

Architectural  
Structural  
Forensics

SOUTHERN COLORADO  
2910 AUSTIN BLUFFS PARKWAY, COLORADO SPRINGS, CO 80918  
719.536.6600 WWW.RMENGINEERS.COM  
SOUTHERN COLORADO DESIGN GROUP, NORTHGLENN, CALIFORNIA

COLORADO LICENSE  
DAVID GENERALI  
1/12/23  
51909  
FOR CIVIL ONLY

NORTHCREST PEMB DEVELOPMENT  
2510 & 2522 CANADA DRIVE  
COLORADO SPRINGS, COLORADO  
LEISURE CONSTRUCTION

SHEET NAME  
**PRELIMINARY GRADING & DRAINAGE**

PROJECT STATUS  
**DESIGN DEVELOPMENT**

ENG: DOW  
DRAWN: TPT  
CHECKED: DGW  
DATE  
01/12/2023

#	REVISION	DATE

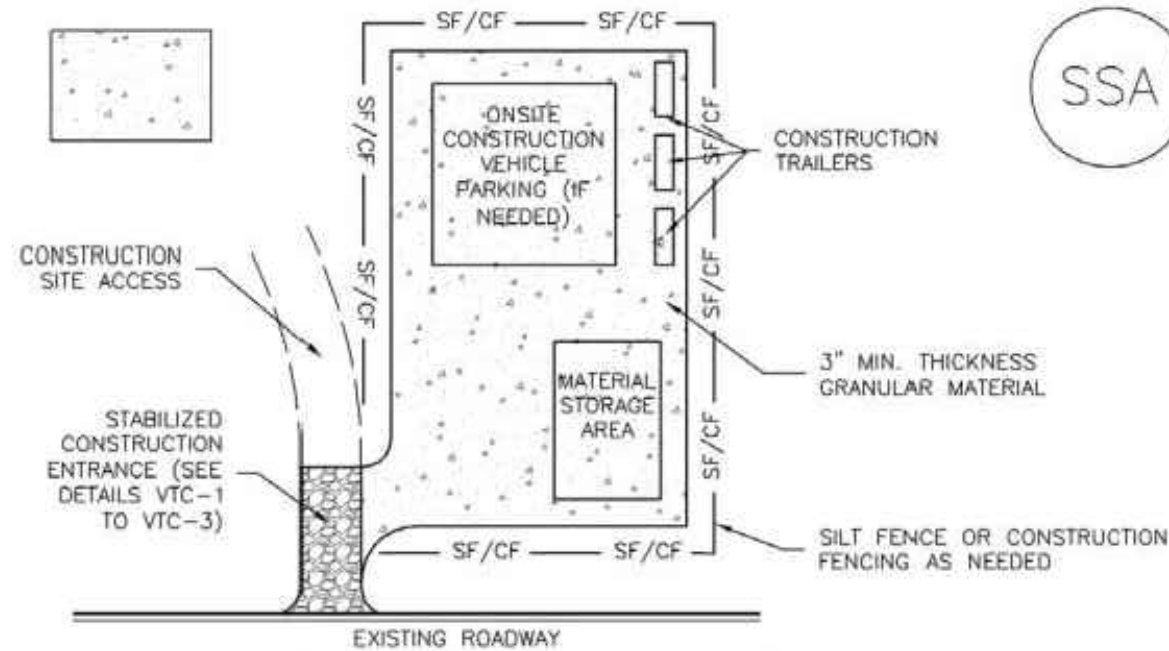
JOB NO.  
180649

SHEET NO.  
C-06

PCD FILE NO PPR-21-036

of 12





SSA-1. STABILIZED STAGING AREA

STABILIZED STAGING AREA INSTALLATION NOTES

- SEE PLAN VIEW FOR LOCATION OF STAGING AREA(S). CONTRACTOR MAY ADJUST LOCATION AND SIZE OF STAGING AREA WITH APPROVAL FROM THE LOCAL JURISDICTION.
- STABILIZED STAGING AREA SHOULD BE APPROPRIATE FOR THE NEEDS OF THE SITE. OVERSIZING RESULTS IN A LARGER AREA TO STABILIZE FOLLOWING CONSTRUCTION.
- STAGING AREA SHALL BE STABILIZED PRIOR TO OTHER OPERATIONS ON THE SITE.
- THE STABILIZED STAGING AREA SHALL CONSIST OF A MINIMUM 3" THICK GRANULAR MATERIAL.
- UNLESS OTHERWISE SPECIFIED BY LOCAL JURISDICTION, ROCK SHALL CONSIST OF DOT SECT. #703, AASHTO #3 COARSE AGGREGATE OR 6" (MINUS) ROCK.
- ADDITIONAL PERIMETER BMPs MAY BE REQUIRED INCLUDING BUT NOT LIMITED TO SILT FENCE AND CONSTRUCTION FENCING.

STABILIZED STAGING AREA MAINTENANCE NOTES

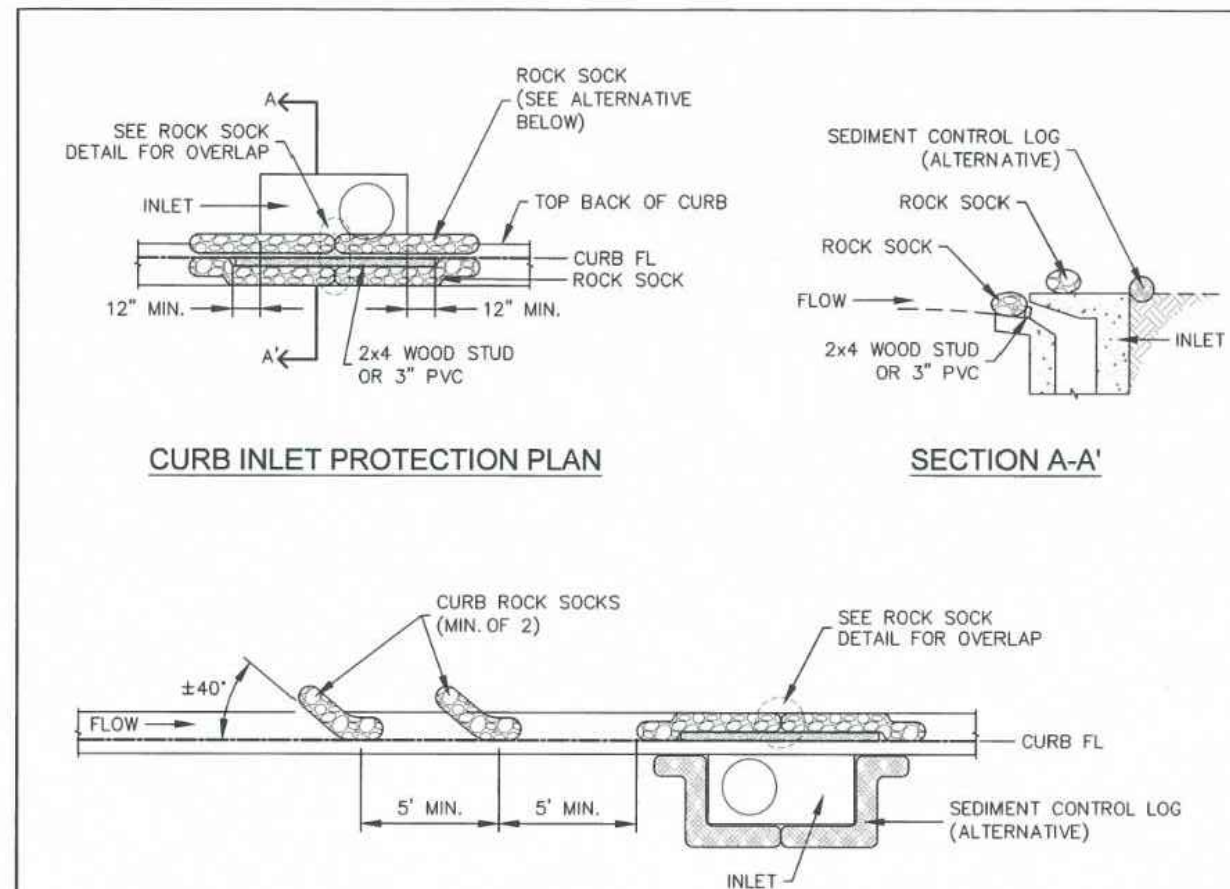
- INSPECT BMPs EACH WORKDAY, AND MAINTAIN THEM IN EFFECTIVE OPERATING CONDITION. MAINTENANCE OF BMPs SHOULD BE PROACTIVE, NOT REACTIVE. INSPECT BMPs AS SOON AS POSSIBLE (AND ALWAYS WITHIN 24 HOURS) FOLLOWING A STORM THAT CAUSES SURFACE EROSION, AND PERFORM NECESSARY MAINTENANCE.
- FREQUENT OBSERVATIONS AND MAINTENANCE ARE NECESSARY TO MAINTAIN BMPs IN EFFECTIVE OPERATING CONDITION. INSPECTIONS AND CORRECTIVE MEASURES SHOULD BE DOCUMENTED THOROUGHLY.
- WHERE BMPs HAVE FAILED, REPAIR OR REPLACEMENT SHOULD BE INITIATED UPON DISCOVERY OF THE FAILURE.
- ROCK SHALL BE REAPPLIED OR REGRADED AS NECESSARY IF RUTTING OCCURS OR UNDERLYING SUBGRADE BECOMES EXPOSED.

STABILIZED STAGING AREA MAINTENANCE NOTES

- STABILIZED STAGING AREA SHALL BE ENLARGED IF NECESSARY TO CONTAIN PARKING, STORAGE, AND UNLOADING/LOADING OPERATIONS.
- THE STABILIZED STAGING AREA SHALL BE REMOVED AT THE END OF CONSTRUCTION. THE GRANULAR MATERIAL SHALL BE REMOVED OR, IF APPROVED BY THE LOCAL JURISDICTION, USED ON SITE, AND THE AREA COVERED WITH TOPSOIL, SEEDED AND MULCHED OR OTHERWISE STABILIZED IN A MANNER APPROVED BY LOCAL JURISDICTION.

NOTE: MANY MUNICIPALITIES PROHIBIT THE USE OF RECYCLED CONCRETE AS GRANULAR MATERIAL FOR STABILIZED STAGING AREAS DUE TO DIFFICULTIES WITH RE-ESTABLISHMENT OF VEGETATION IN AREAS WHERE RECYCLED CONCRETE WAS PLACED.

NOTE: MANY JURISDICTIONS HAVE BMP DETAILS THAT VARY FROM UDFCD STANDARD DETAILS. CONSULT WITH LOCAL JURISDICTIONS AS TO WHICH DETAIL SHOULD BE USED WHEN DIFFERENCES ARE NOTED.



CURB ROCK SOCKS UPSTREAM OF INLET PROTECTION

INSTALLATION NOTES

- SEE ROCK SOCK DETAIL FOR INSTALLATION REQUIREMENTS.
- PLACEMENT OF THE ROCK SOCK SHALL BE APPROXIMATELY 40 DEGREES FROM THE CURB.
- ROCK SOCKS ARE TO BE FLUSH WITH THE CURB AND SPACED A MINIMUM OF 5' APART.
- AT LEAST TWO CURB ROCK SOCKS IN SERIES ARE REQUIRED UPSTREAM OF ON-GRADIENT INLETS.
- ADDITIONAL ROCK SOCKS MAY BE REQUIRED AT GEC INSPECTOR'S DISCRETION.

MAINTENANCE NOTES

- FREQUENT OBSERVATIONS AND MAINTENANCE ARE NECESSARY TO MAINTAIN CONTROL MEASURES IN EFFECTIVE OPERATING CONDITION. INSPECTIONS AND CORRECTIVE MEASURES SHOULD BE DOCUMENTED THOROUGHLY.
- ACCUMULATED SEDIMENT MUST BE REMOVED WHEN THE HEIGHT REACHES 1/2 OF THE DESIGN DEPTH OF THE INLET BARRIER.
- ROCK SOCKS MUST REMAIN UNTIL THE UPSTREAM DISTURBANCE AREA IS STABILIZED.
- PERMANENTLY STABILIZE AREA BEHIND INLET AFTER ROCK SOCKS ARE REMOVED WHEN REMOVAL IS APPROPRIATE.

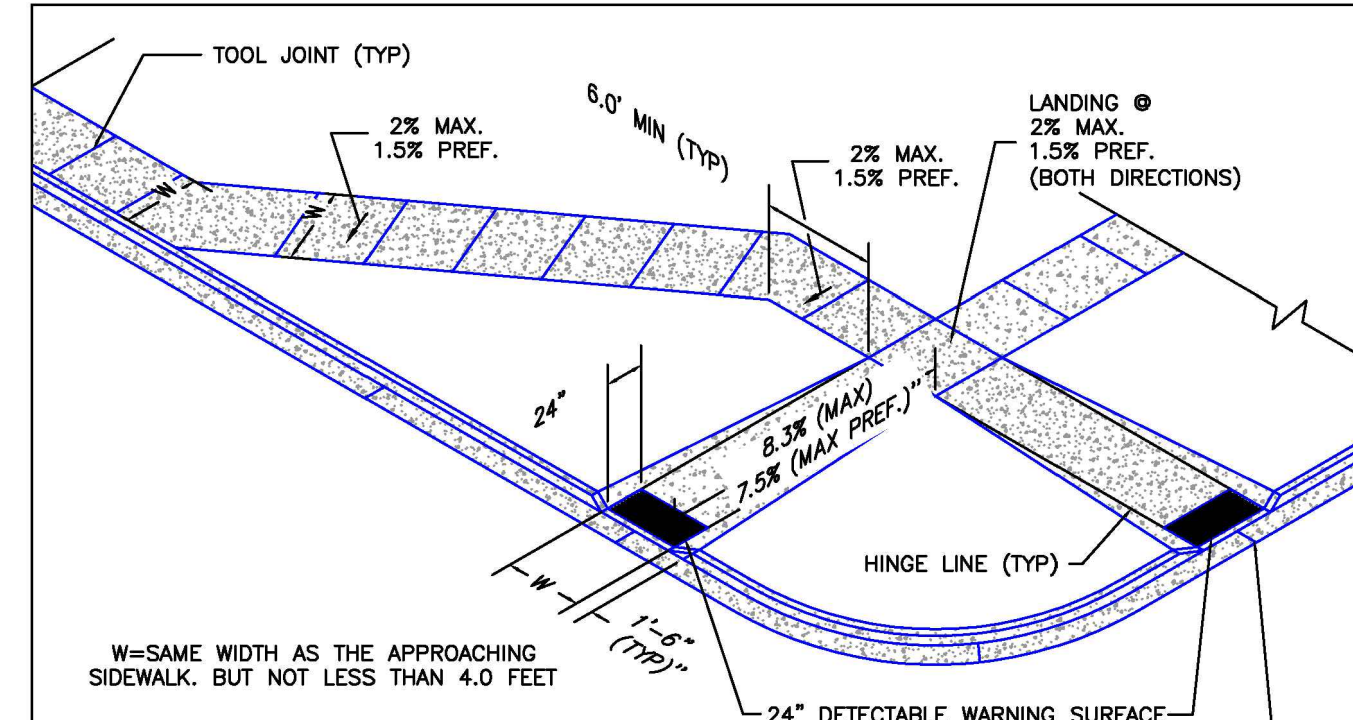
IP-1

STORMWATER ENTERPRISE

ON-GRADE INLET PROTECTION

APPROVED: [Signature]

ISSUES: 10/7/19 REVISED: 6/19/2020 DRAWING NO: 100-IP-1



PEDESTRIAN RAMP NOTES

- ALL WORK SHALL BE DONE IN ACCORDANCE WITH THE CURRENT ENGINEERING CRITERIA MANUAL AND ADA REQUIREMENTS.
- CONTRACTOR TO NOTIFY ENGINEERING DIVISION INSPECTION STAFF 48 HOURS PRIOR TO CONCRETE PLACEMENT.
- PEDESTRIAN CURB RAMP CONSTRUCTION SHALL BE A MINIMUM 4500 PSI CONCRETE, MINIMUM 4" THICK, NON-COLORED, NON-SCORED, COARSE BROOM FINISH.
- PEDESTRIAN CURB RAMP LOCATION AND LENGTH MAY REQUIRE MODIFICATION TO MAINTAIN THE 8.3% MAXIMUM RUNNING RAMP SLOPE DUE TO STREET INTERSECTION GRADIES AND/OR ALIGNMENTS. SEE EGM SECTION 8.3.6 FOR PEDESTRIAN PUSHBUTTON LOCATION REQUIREMENTS.
- DETECTABLE WARNING SURFACE SHALL START A MINIMUM OF 6" BUT NOT MORE THAN 8" FROM THE FLOWLINE OF THE CURB AT ANY POINT.
- DETECTABLE WARNING SURFACE SHALL BE PREFABRICATED, CAST IRON (PATINA NATURAL FINISH) AND IN ACCORDANCE WITH EGM CHAPTER 6 AND SD-2-42. THERMOPLASTIC TRUNCATED DOMES AND PAVERS WILL NOT BE ACCEPTED.
- THE DETECTABLE WARNING SURFACE SHALL BE 24" IN LENGTH AND THE FULL WIDTH OF THE RAMP.
- PEDESTRIAN CURB RAMP WIDTH REQUIRED IS SAME AS APPROACHING SIDEWALK; 4' MINIMUM.
- ALL PEDESTRIAN CURB RAMPS WILL BE PERPENDICULAR TO TRAFFIC WITH THE EXCEPTION OF MID-BLOCK OR TERMINAL RAMPS WHICH MAY BE PARALLEL, SUBJECT TO APPROVAL.
- DRAINAGE STRUCTURES, TRAFFIC SIGNAL/SIGNAGE, UTILITIES/JUNCTION BOXES, OR OTHER OBSTRUCTIONS WITHIN PROPOSED PEDESTRIAN CURB RAMP AREAS AND LANDINGS ARE PROHIBITED.
- THE COUNTER SLOPE OF THE GUTTER OR ROAD AT THE FOOT OF A RAMP SHALL NOT EXCEED 5%.

GENERAL NOTES

- WHERE THE 1"-6" FLARED SIDE(S) OF A PERPENDICULAR CURB RAMP IS (ARE) CONTIGUOUS WITH A PEDESTRIAN OR HARD SURFACE AREA (PEDESTRIAN CIRCULATION PATH), THE MAXIMUM FLARE SLOPE SHALL NOT EXCEED 10:1.
- PEDESTRIAN WALKWAY (PEDESTRIAN ACCESS ROUTE) AND/OR LOCATION OF EXISTING OR FUTURE PEDESTRIAN RAMPS ON OPPOSITE CORNERS SHALL BE REVIEWED BEFORE CONSTRUCTING NEW RAMPS.
- AT MARKED PEDESTRIAN CROSSINGS, THE BOTTOM OF THE RAMPS, EXCLUSIVE OF THE FLARE SIDES, SHALL BE TOTALLY CONTAINED WITHIN THE MARKINGS.

LAYOUT CURB SECTIONS SO THAT AT LEAST ONE TOOL JOINT IS WITHIN RAMP THROAT

6/23/20

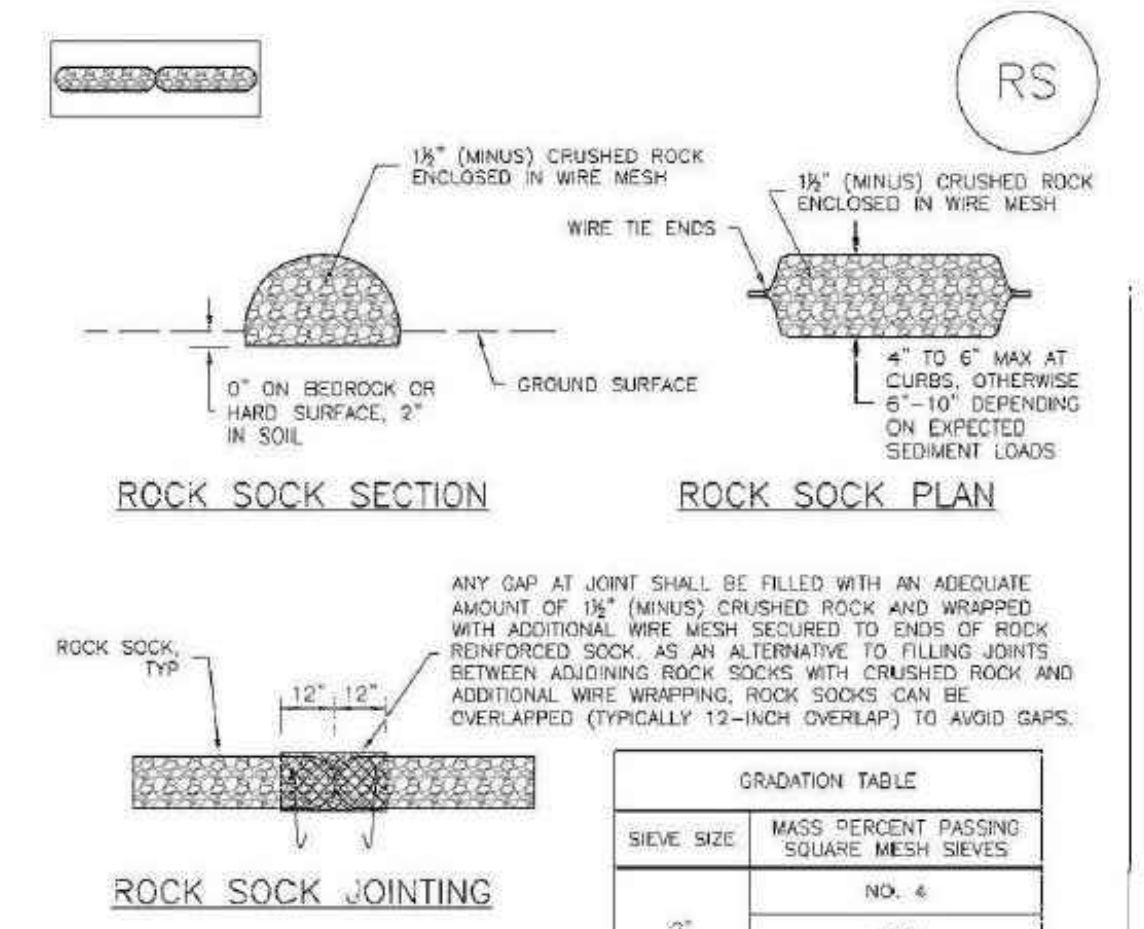
DATE APPROVED: Jennifer E. Irvine

DEPARTMENT OF PUBLIC WORKS

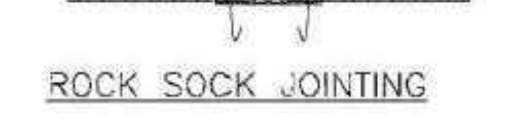
REVISION DATE: 6/23/20

FILE NAME: SD\_2-41

DEPARTMENT OF PUBLIC WORKS



ROCK SOCK JOINTING



GRADATION TABLE	
SIEVE SIZE	MASS PERCENT PASSING
2"	100
1 1/2"	90 - 100
1"	20 - 55
3/4"	0 - 15
3/8"	0 - 5

MATCHES SPECIFICATIONS FOR NO. 4 COARSE AGGREGATE FOR CONCRETE PER AASHTO M443. ALL ROCK SHALL BE FRACTURED FACE, ALL SIDES.

ROCK SOCK INSTALLATION NOTES

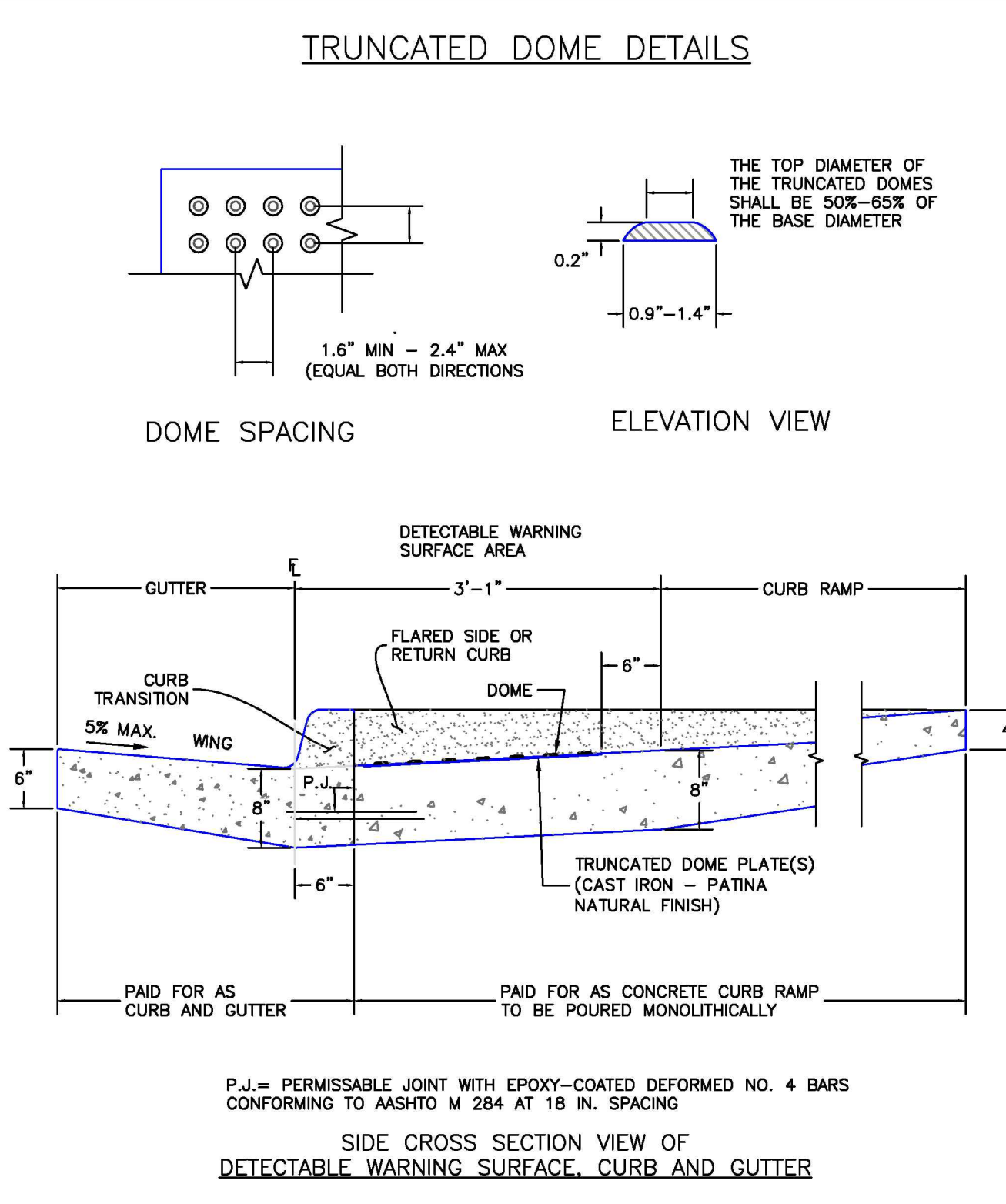
- SEE PLAN VIEW FOR LOCATION(S) OF ROCK SOCKS.
- CRUSHED ROCK SHALL BE 1 1/2" (MINUS) IN SIZE WITH A FRACTURED FACE (ALL SIDES) AND SHALL COMPLY WITH GRADATION SHOWN ON THIS SHEET (1 1/2" MINUS).
- WIRE MESH SHALL BE FABRICATED OF 10 GAUGE POULTRY MESH, OR EQUIVALENT, WITH A MAXIMUM OPENING OF 1/2 INCH, RECOMMENDED MINIMUM ROLL WIDTH OF 48 INCHES.
- WIRE MESH SHALL BE SECURED USING "HOG RINGS" OR WIRE TIES AT 6" CENTERS.
- ALONG ALL JOINTS AND AT 2" CENTERS ON ENDS OF SOCKS.
- JEFFERSON COUNTY MAY ALLOW THE USE OF FILTER FABRIC AS AN ALTERNATIVE TO WIRE MESH FOR THE ROCK ENCLOSURE IF SPECIFIED ON THE APPROVED PLANS.

ROCK SOCK MAINTENANCE NOTES

- INSPECT BMPs EACH WORKDAY, AND MAINTAIN THEM IN EFFECTIVE OPERATING CONDITION. MAINTENANCE OF BMPs SHOULD BE PROACTIVE, NOT REACTIVE. INSPECT BMPs AS SOON AS POSSIBLE (AND ALWAYS WITHIN 24 HOURS) FOLLOWING A STORM THAT CAUSES SURFACE EROSION, AND PERFORM NECESSARY MAINTENANCE.
- FREQUENT OBSERVATIONS AND MAINTENANCE ARE NECESSARY TO MAINTAIN BMPs IN EFFECTIVE OPERATING CONDITION. INSPECTIONS AND CORRECTIVE MEASURES SHOULD BE DOCUMENTED THOROUGHLY.
- WHERE BMPs HAVE FAILED, REPAIR OR REPLACEMENT SHOULD BE INITIATED UPON DISCOVERY OF THE FAILURE.
- ROCK SOCKS SHALL BE REPLACED IF THEY BECOME HEAVILY SOILED, OR DAMAGED BEYOND REPAIR.
- SEDIMENT ACCUMULATED UPSTREAM OF ROCK SOCKS SHALL BE REMOVED AS NEEDED TO MAINTAIN FUNCTIONALITY OF THE BMP. TYPICALLY WHEN DEPTH OF ACCUMULATED SEDIMENTS IS APPROXIMATELY 1/2 OF THE HEIGHT OF THE ROCK SOCK.
- ROCK SOCKS ARE TO REMAIN IN PLACE UNTIL THE UPSTREAM DISTURBED AREA IS STABILIZED AND APPROVED BY JEFFERSON COUNTY.
- WHEN ROCK SOCKS ARE REMOVED, ALL DISTURBED AREAS SHALL BE COVERED WITH TOPSOIL, SEEDED AND MULCHED OR OTHERWISE STABILIZED AS APPROVED BY JEFFERSON COUNTY.

ROCK SOCK

RS Detail 14



SIDE CROSS SECTION VIEW OF DETECTABLE WARNING SURFACE, CURB AND GUTTER

6/23/20

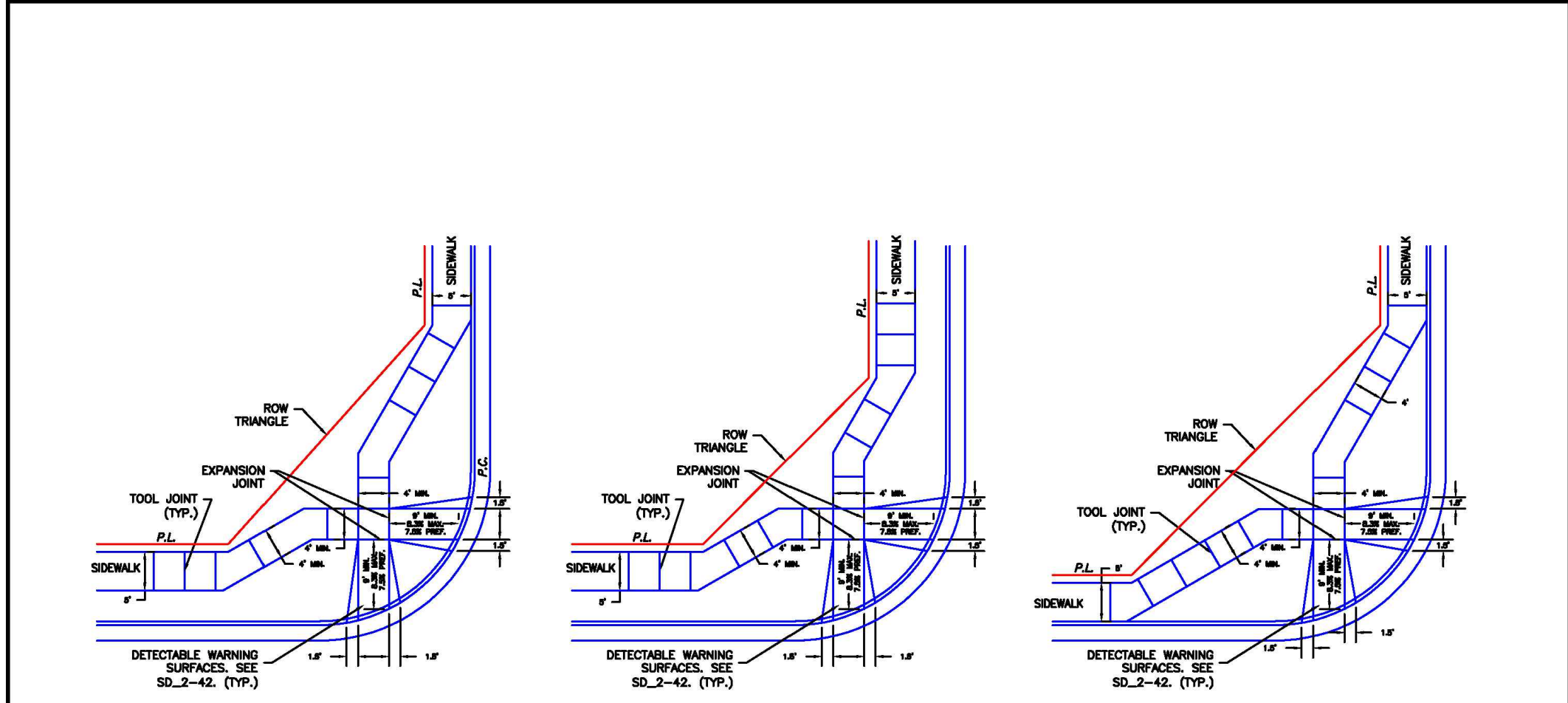
DATE APPROVED: Jennifer E. Irvine

DEPARTMENT OF PUBLIC WORKS

REVISION DATE: 6/23/20

FILE NAME: SD\_2-42

DEPARTMENT OF PUBLIC WORKS



SCALE: NOT TO SCALE

6/23/20

DATE APPROVED: Jennifer E. Irvine

DEPARTMENT OF PUBLIC WORKS

REVISION DATE: 6/23/20

FILE NAME: SD\_2-40

DEPARTMENT OF PUBLIC WORKS

ROCKY MOUNTAIN GROUP

ARCHITECTS ENGINEERS

Geotechnical Materials Testing Civil Planning

Architectural Structural Forensics

2910 ALPINE BLUFFS PARKWAY, COLORADO SPRINGS, CO 80918

WWW.RMG-ENGINEERS.COM

STURGEON LICENSED UNDER PROFESSIONAL REGULATION BOARD

COLORADO LICENSE

NO. 51909

FOR CIVIL ONLY

NORTHCREST PEMB DEVELOPMENT

2510 & 2522 CANADA DRIVE

COLORADO SPRINGS, COLORADO

LEISURE CONSTRUCTION

PROJECT STATUS: DESIGN DEVELOPMENT

SHEET NAME: EROSION CONTROL DETAILS 2

ENG: DOW

DRAWN: TPT

CHECKED: DGW

DATE: 01/12/2023

# REVISION DATE

JOB NO: 180649

SHEET NO: C-08

NOTE: THE STABILIZED DRIVEWAY ACCESS/DRIVEWAY TO BE CONSTRUCTED TO VEHICLE TRACKING CONTROL STANDARDS WITH THE PROPOSED DRIVEWAY AGGREGATE BASE COURSE MATERIAL AND COMPACTION. A MINIMUM OF 30' INSIDE RADII ARE TO BE CONSTRUCTED FOR THE STABILIZED DRIVEWAY ACCESS/DRIVEWAY AND VEHICLE TRACKING FOR HEAVY VEHICLE INGRESS/EGRESS.



**SEEDING & MULCHING**

ALL SOIL TESTING, SOILS AMENDMENT AND FERTILIZER DOCUMENTATION, AND SEED LOAD AND BAG TICKETS MUST BE ADDED TO THE CSWMP.

**SOIL PREPARATION**

1. IN AREAS TO BE SEEDDED, THE UPPER 6 INCHES OF THE SOIL MUST NOT BE HEAVILY COMPACTED, AND SHOULD BE IN FRIABLE CONDITION. LESS THAN 85% STANDARD PROCTOR DENSITY IS ACCEPTABLE. AREAS OF COMPACTION OR GENERAL CONSTRUCTION ACTIVITY MUST BE SCARRIFIED TO A DEPTH OF 6 TO 12 INCHES PRIOR TO SPREADING TOPSOIL TO BREAK UP COMPACTED LAYERS AND PROVIDE A BLENDING ZONE BETWEEN DIFFERENT SOIL LAYERS.
2. AREAS TO BE PLANTED SHALL HAVE AT LEAST 4 INCHES OF TOPSOIL SUITABLE TO SUPPORT PLANT GROWTH.
3. THE CITY RECOMMENDS THAT EXISTING AND/OR IMPORTED TOPSOIL BE TESTED TO IDENTIFY SOIL DEFICIENCIES AND ANY SOIL AMENDMENTS NECESSARY TO ADDRESS THESE DEFICIENCIES. SOIL AMENDMENTS AND/OR FERTILIZERS SHOULD BE ADDED TO CORRECT TOPSOIL DEFICIENCIES BASED ON SOIL TESTING RESULTS.
4. TOPSOIL SHALL BE PROTECTED DURING THE CONSTRUCTION PERIOD TO RETAIN ITS STRUCTURE AVOID COMPACTION, AND TO PREVENT EROSION AND CONTAMINATION. STRIPPED TOPSOIL MUST BE STORED IN AN AREA AWAY FROM MACHINERY AND CONSTRUCTION OPERATIONS, AND CARE MUST BE TAKEN TO PROTECT THE TOPSOIL AS A VALUABLE COMMODITY. TOPSOIL MUST NOT BE STRIPPED DURING UNDESIRABLE WORKING CONDITIONS (E.G. DURING WET WEATHER OR WHEN SOILS ARE SATURATED). TOPSOIL SHALL NOT BE STORED IN SWALES OR IN AREAS WITH POOR DRAINAGE.

**SEEDING**

1. ALLOWABLE SEED MIXES ARE INCLUDED IN THE CITY OF COLORADO SPRINGS STORMWATER CONSTRUCTION MANUAL. ALTERNATIVE SEED MIXES ARE ACCEPTABLE IF INCLUDED IN AN APPROVED LANDSCAPING PLAN.
2. SEED SHOULD BE DRILL-SEEDED WHENEVER POSSIBLE
3. SEED DEPTH MUST BE 1/2 TO 3/4 INCHES WHEN DRILL-SEEDING IS USED
3. BROADCAST SEEDING OR HYDRO-SEEDING WITH TACKIFIER MAY BE SUBSTITUTED ON SLOPES STEEPER THAN 3:1 OR ON OTHER AREAS NOT PRACTICAL TO DRILL SEED.
  - SEEDING RATES MUST BE DOUBLED FOR BROADCAST SEEDING OR INCREASED BY 50% IF USING A BRILLION DRILL OR HYDRO-SEEDING
  - BROADCAST SEEDING MUST BE LIGHTLY HAND-RAKED INTO THE SOIL

**MULCHING**

1. MULCHING SHOULD BE COMPLETED AS SOON AS PRACTICABLE AFTER SEEDING, HOWEVER PLANTED AREAS MUST BE MULCHED NO LATER THAN 14 DAYS AFTER PLANTING.
2. MULCHING REQUIREMENTS INCLUDE:
  - HAY OR STRAW MULCH
    - ONLY CERTIFIED WEED-FREE AND CERTIFIED SEED-FREE MULCH MAY BE USED. MULCH MUST BE APPLIED AT 2 TONS/ACRE AND ADEQUATELY SECURED BY CRIMPING AND/OR TACKIFIER.
    - CRIMPING MUST NOT BE USED ON SLOPES GREATER THAN 3:1 AND MULCH FIBERS MUST BE TUCKED INTO THE SOIL TO A DEPTH OF 3 TO 4 INCHES.
    - TACKIFIER MUST BE USED IN PLACE OF CRIMPING ON SLOPES STEEPER THAN 3:1.
  - HYDRAULIC MULCHING
    - HYDRAULIC MULCHING IS AN OPTION ON STEEP SLOPES OR WHERE ACCESS IS LIMITED.
    - IF HYDRO-SEEDING IS USED, MULCHING MUST BE APPLIED AS A SEPARATE, SECOND OPERATION.
    - WOOD CELLULOSE FIBERS MIXED WITH WATER MUST BE APPLIED AT A RATE OF 2,000 TO 2,500 POUNDS/ACRE, AND TACKIFIER MUST BE APPLIED AT A RATE OF 100 POUNDS/ACRE.
  - EROSION CONTROL BLANKET
    - EROSION CONTROL BLANKET MAY BE USED IN PLACE OF TRADITIONAL MULCHING METHODS.

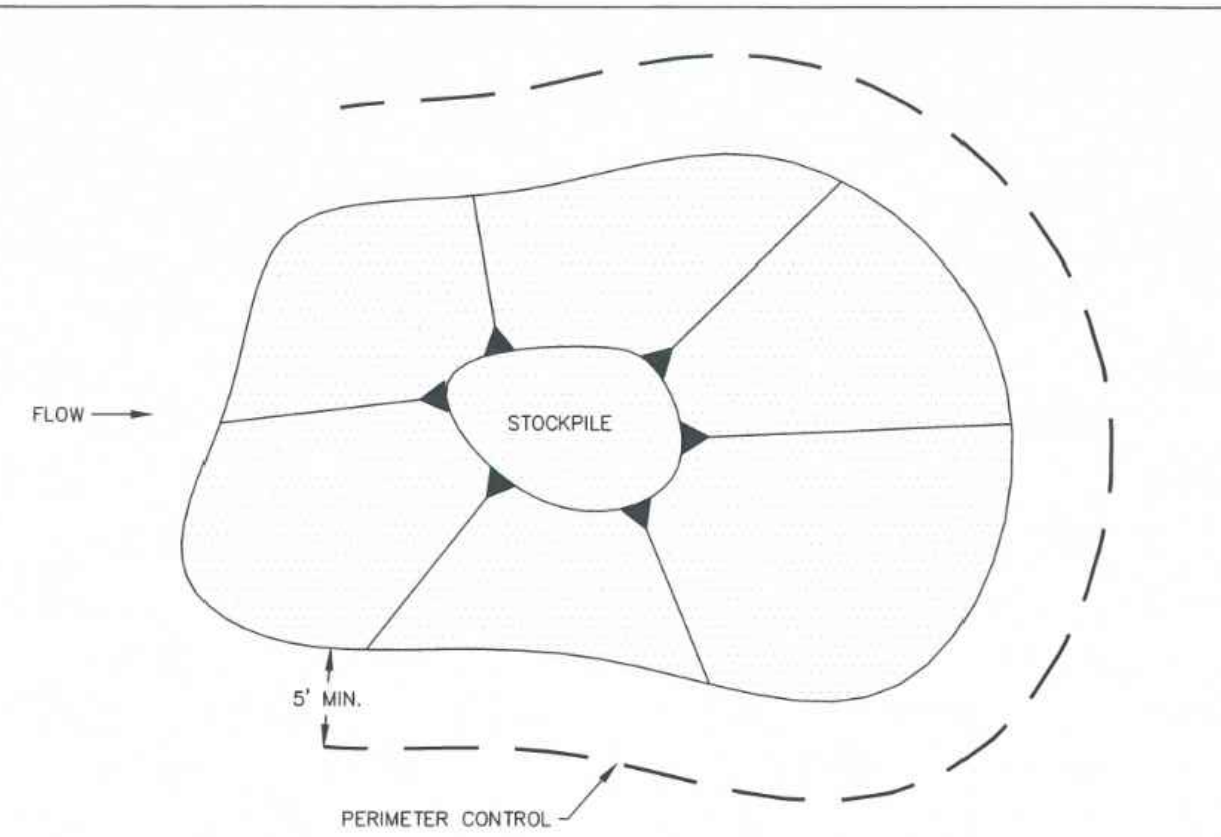
SM

**STORMWATER ENTERPRISE**

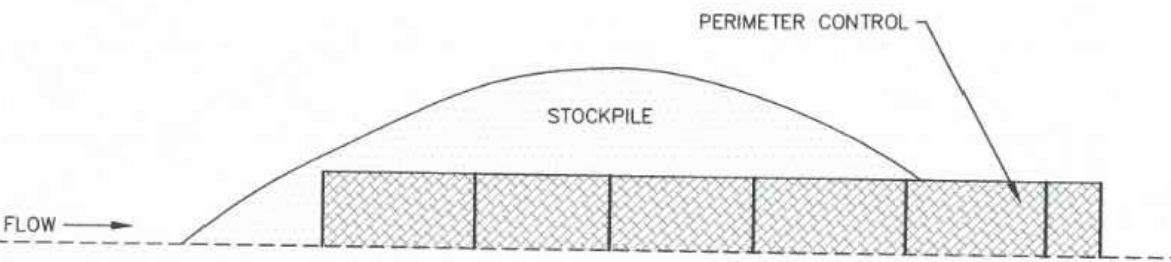
**SEEDING & MULCHING**

APPROVED: *[Signature]*

ISSUED: 10/7/19 REVISED: 8/19/2020 DRAWING NO: 900-SM



**STOCKPILE PROTECTION PLAN**



**STOCKPILE PROTECTION ELEVATION**

**INSTALLATION NOTES**

1. INSTALL PERIMETER CONTROL AROUND STOCKPILE ON DOWNGRADIENT SIDE. PERIMETER CONTROL MUST BE SUITABLE TO SITE CONDITIONS AND INSTALLED ACCORDING TO THE RELEVANT DETAIL.
2. FOR STOCKPILES ON THE INTERIOR PORTION OF A CONSTRUCTION SITE, WHERE OTHER DOWNGRADIENT CONTROLS INCLUDING PERIMETER CONTROL ARE IN PLACE, STOCKPILE PERIMETER CONTROLS MAY NOT BE REQUIRED.

**MAINTENANCE NOTES**

1. FREQUENT OBSERVATIONS AND MAINTENANCE ARE NECESSARY TO MAINTAIN CONTROL MEASURES IN EFFECTIVE OPERATING CONDITION. INSPECTIONS AND CORRECTIVE MEASURES SHOULD BE DOCUMENTED THOROUGHLY.
2. IF PERIMETER CONTROLS MUST BE MOVED TO ACCESS STOCKPILE, REPLACE PERIMETER CONTROLS BY THE END OF THE WORK DAY.
3. ACCUMULATED SEDIMENT MUST BE REMOVED ACCORDING TO PERIMETER CONTROL DETAIL.

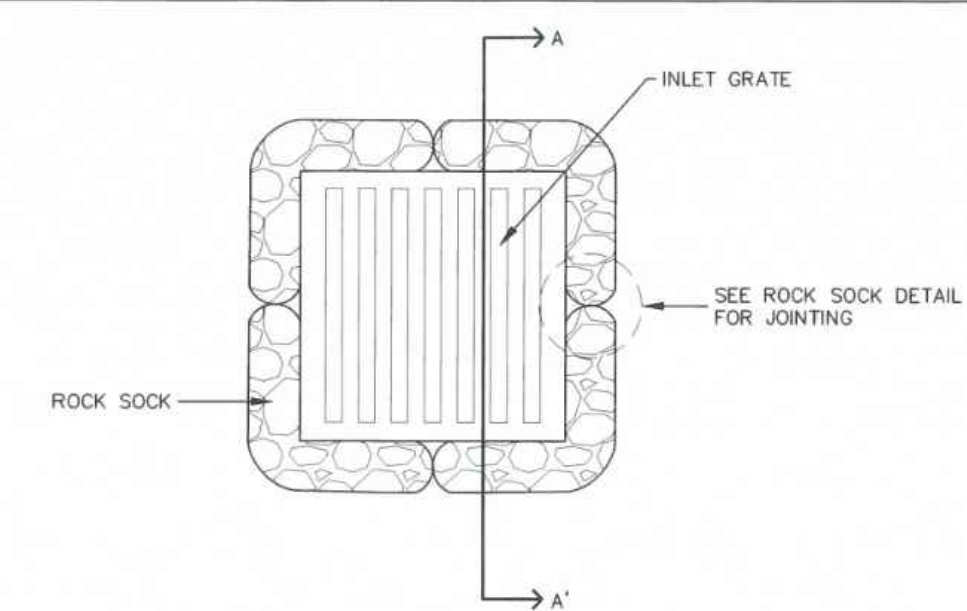
SP

**STORMWATER ENTERPRISE**

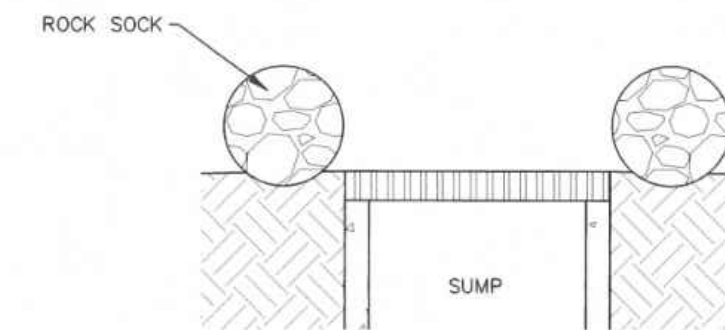
**STOCKPILE PROTECTION**

APPROVED: *[Signature]*

ISSUED: 10/7/19 REVISED: 8/19/2020 DRAWING NO: 900-SP



**ROCK SOCK SUMP INLET PROTECTION PLAN**



**SECTION A-A'**

**INSTALLATION NOTES**

1. SEE ROCK SOCK DETAIL FOR INSTALLATION REQUIREMENTS.
2. SEDIMENT CONTROL LOGS MAY BE USED IN PLACE OF ROCK SOCKS IN PERVIOUS AREAS. INSTALL PER SEDIMENT CONTROL LOG DETAIL.
3. CONTROL MEASURES MUST BE WRAPPED AROUND INLET AS TIGHTLY AS POSSIBLE.

**MAINTENANCE NOTES**

1. FREQUENT OBSERVATIONS AND MAINTENANCE ARE NECESSARY TO MAINTAIN CONTROL MEASURES IN EFFECTIVE OPERATING CONDITION. INSPECTIONS AND CORRECTIVE MEASURES SHOULD BE DOCUMENTED THOROUGHLY.
2. ACCUMULATED SEDIMENT MUST BE REMOVED WHEN THE HEIGHT REACHES 1/2 OF THE DESIGN DEPTH OF THE BARRIER.
3. ROCK SOCKS MUST REMAIN UNTIL THE UPSTREAM DISTURBANCE AREA IS STABILIZED.
4. PERMANENTLY STABILIZE AREA AROUND INLET AFTER ROCK SOCKS ARE REMOVED WHEN REMOVAL IS APPROPRIATE.

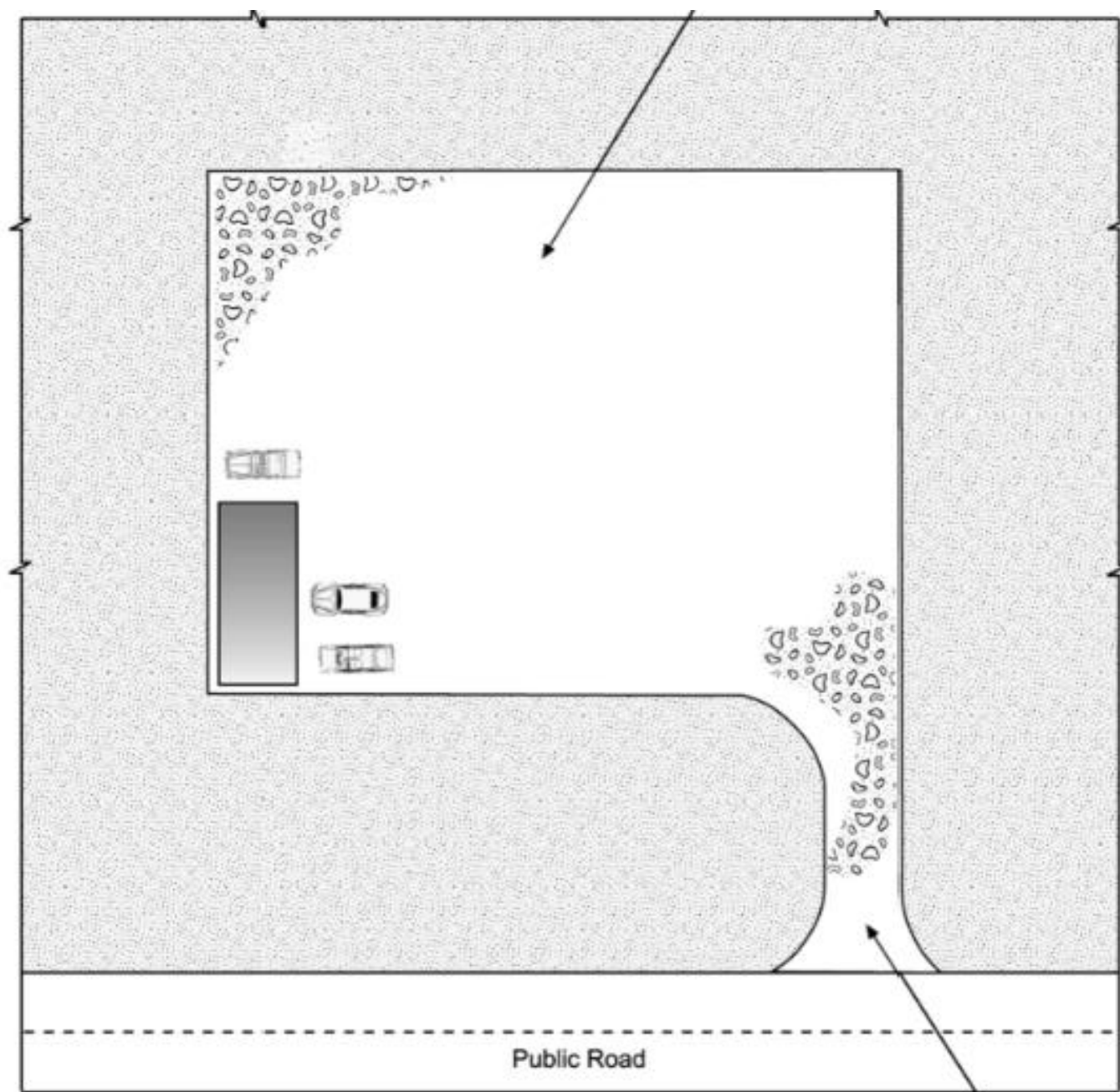
IP-2

**STORMWATER ENTERPRISE**

**SUMP INLET PROTECTION**

APPROVED: *[Signature]*

ISSUED: 10/7/19 REVISED: 8/19/2020 DRAWING NO: 900-IP-2

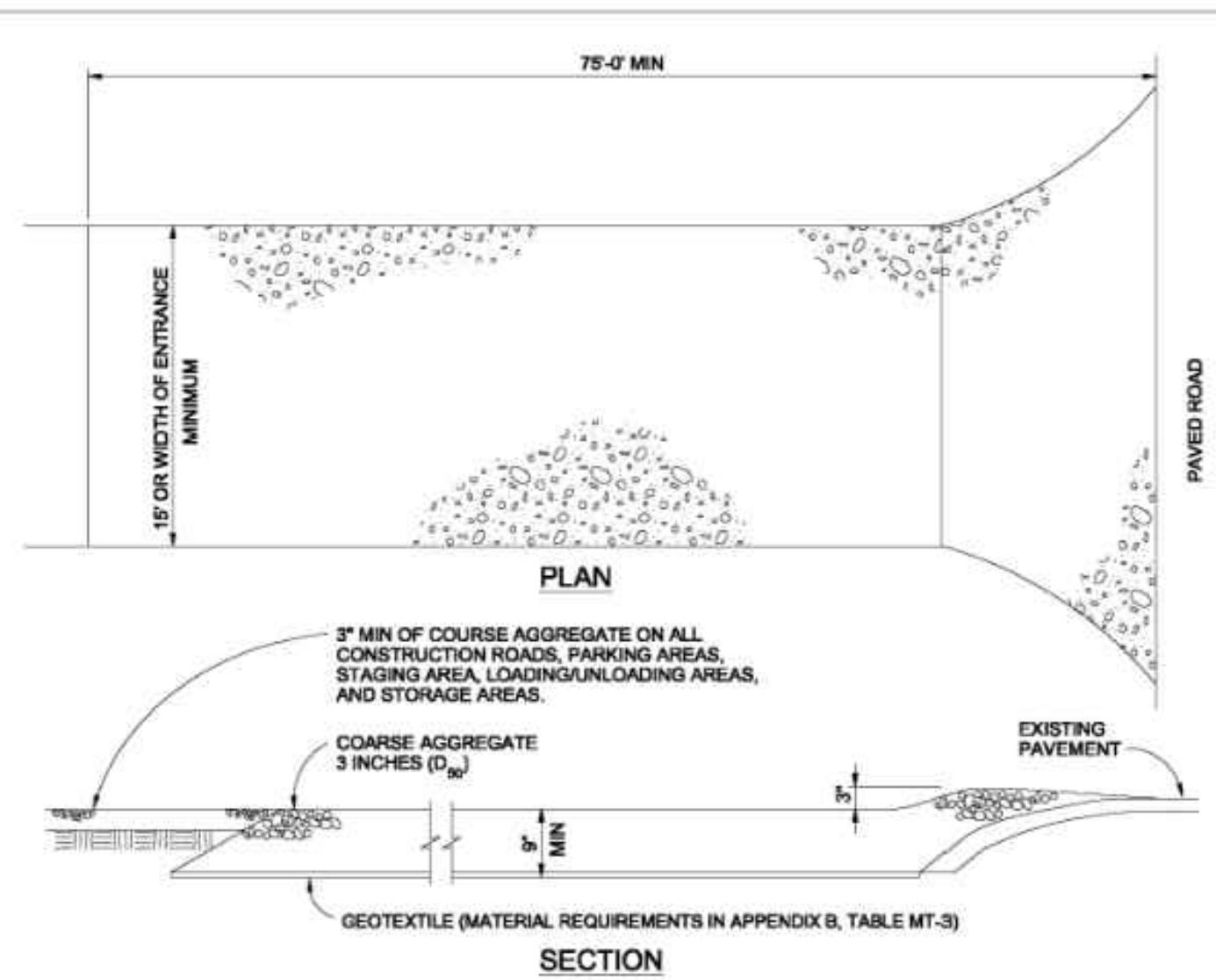


**Table VT-1**

	Case 1	Case 2
Gravel Thickness	9"	3"
Filter Fabric	YES	NO

**City of Colorado Springs Storm Water Quality**

**Figure VT-1 Vehicle Tracking Application Examples**



**VEHICLE TRACKING NOTES**

**INSTALLATION REQUIREMENTS**

1. ALL ENTRANCES TO THE CONSTRUCTION SITE ARE TO BE STABILIZED PRIOR TO CONSTRUCTION BEGINNING.
2. CONSTRUCTION ENTRANCES ARE TO BE BUILT WITH AN APRON TO ALLOW FOR TURNING TRAFFIC, BUT SHOULD NOT BE BUILT OVER EXISTING PAVEMENT EXCEPT FOR A SLIGHT OVERLAP.
3. AREAS TO BE STABILIZED ARE TO BE PROPERLY GRADED AND COMPACTED PRIOR TO LAYING DOWN GEOTEXTILE AND STONE.
4. CONSTRUCTION ROADS, PARKING AREAS, LOADING/UNLOADING ZONES, STORAGE AREAS, AND STAGING AREAS ARE TO BE STABILIZED.
5. CONSTRUCTION ROADS ARE TO BE BUILT TO CONFORM TO SITE GRADES, BUT SHOULD NOT HAVE SIDE SLOPES OR ROAD GRADES THAT ARE EXCESSIVELY STEEP.

**MAINTENANCE REQUIREMENTS**

1. REGULAR INSPECTIONS ARE TO BE MADE OF ALL STABILIZED AREAS, ESPECIALLY AFTER STORM EVENTS.
2. STONES ARE TO BE REAPPLIED PERIODICALLY AND WHEN REPAIR IS NECESSARY.
3. SEDIMENT TRACKED ONTO PAVED ROADS IS TO BE REMOVED DAILY BY SHOVELING OR SWEEPING. SEDIMENT IS NOT TO BE WASHED DOWN STORM SEWER DRAINS.
4. STORM SEWER INLET PROTECTION IS TO BE IN PLACE, INSPECTED, AND CLEANED IF NECESSARY.
5. OTHER ASSOCIATED SEDIMENT CONTROL MEASURES ARE TO BE INSPECTED TO ENSURE GOOD WORKING CONDITION.

**City of Colorado Springs Stormwater Quality**

**Figure VT-2 Vehicle Tracking Application Examples**

NORTHCREST PEMB DEVELOPMENT

2510 & 2522 CANADA DRIVE

COLORADO SPRINGS, COLORADO

LEISURE CONSTRUCTION

EROSION CONTROL DETAILS 3

DESIGN DEVELOPMENT

ENG: DOW  
DRAWN: TPT  
CHECKED: DGW

DATE: 01/12/2023

#	REVISION	DATE

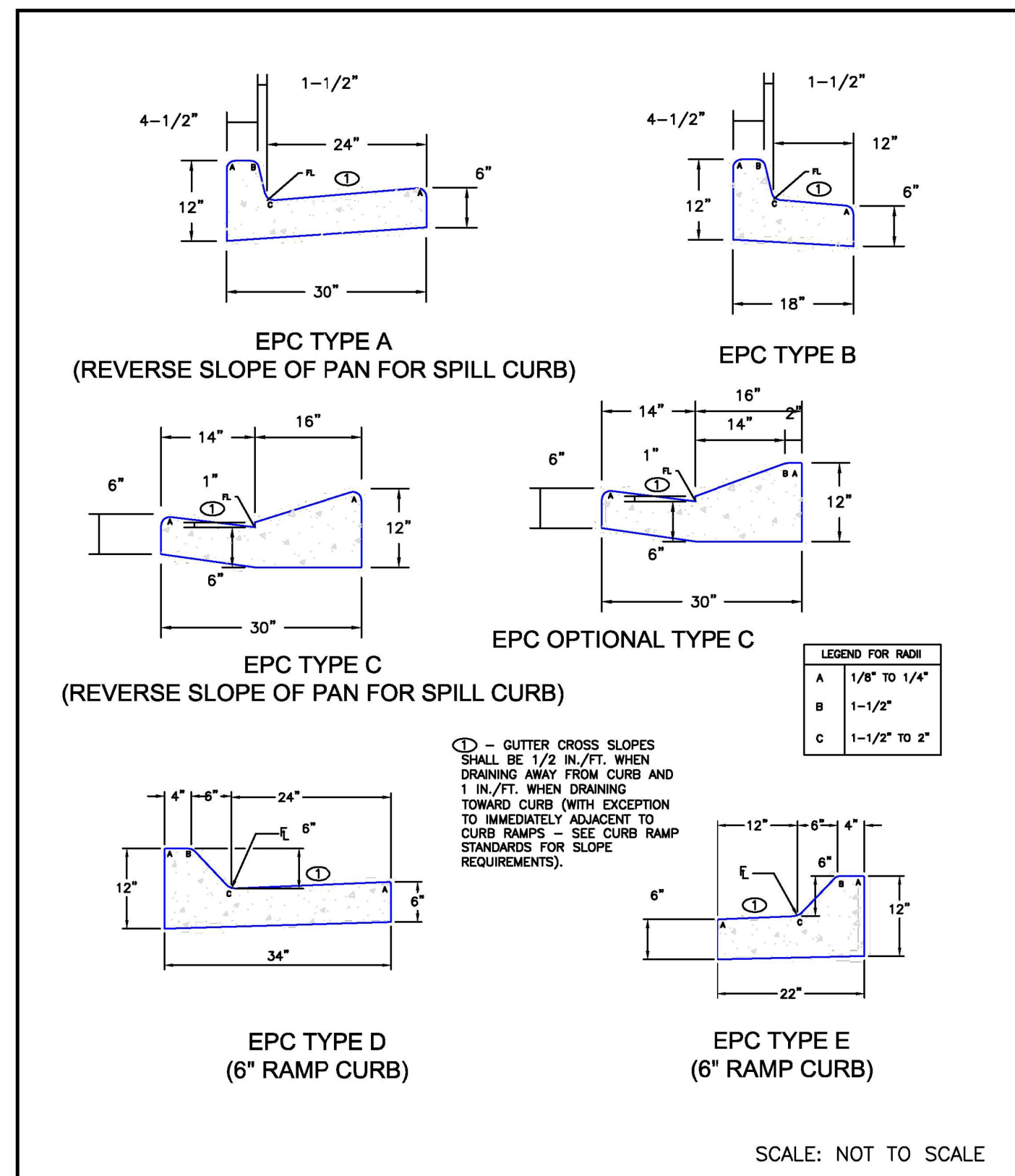
JOB NO: 180649  
SHEET NO: C-09 of 12

**ROCKY MOUNTAIN GROUP**

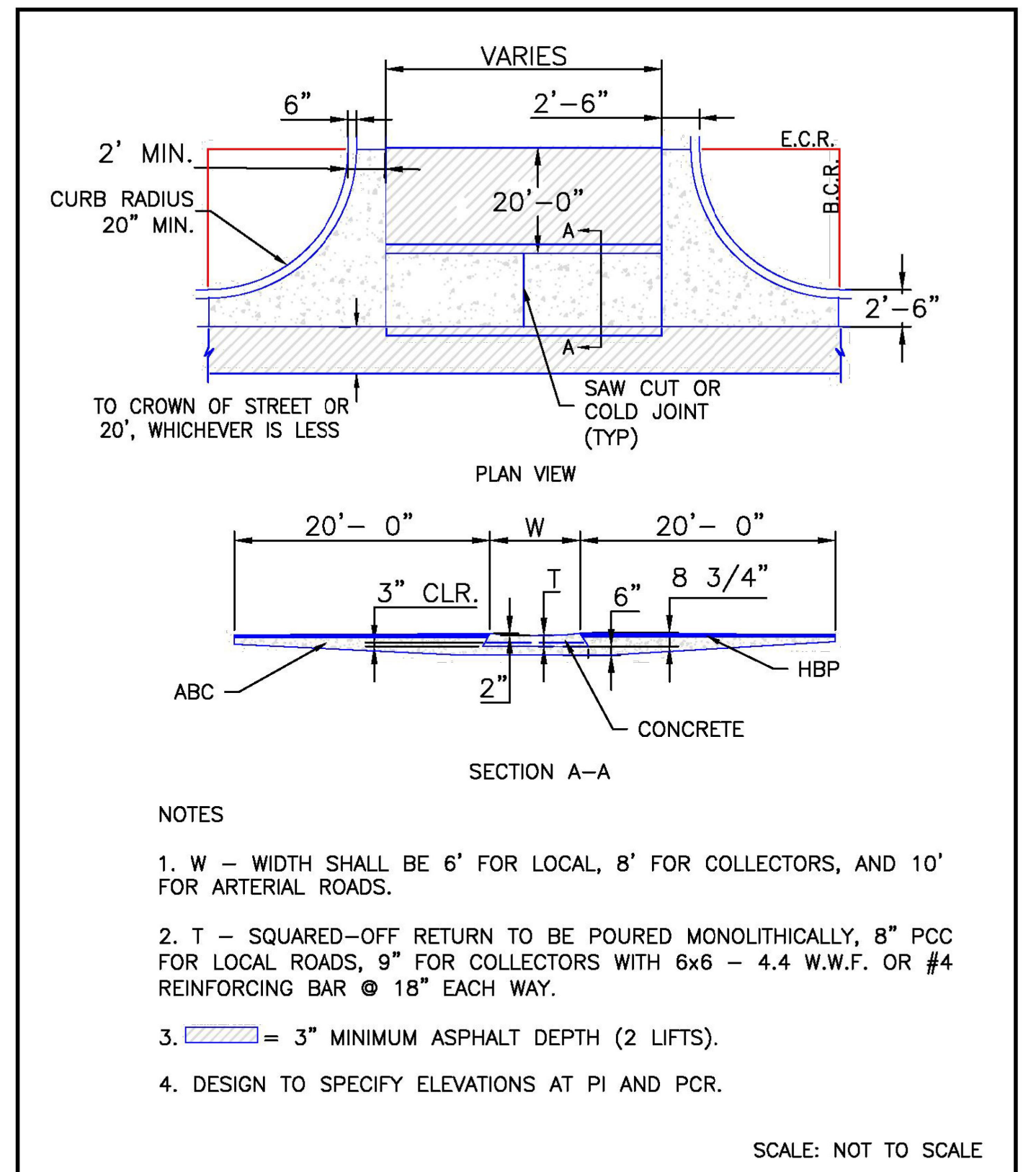
ARCHITECTS  
Geotechnical  
Materials Testing  
Civil Planning  
**RMG**  
ENGINEERS  
Architectural  
Structural  
Forensics

SOUTHERN COLORADO  
2910 ALSTON BLUFFS PARKWAY, COLORADO SPRINGS, CO 80918  
WWW.ROCKYMOUNTAINENGINEERS.COM  
Sedimentation, Erosion Control, Stormwater Management, Construction

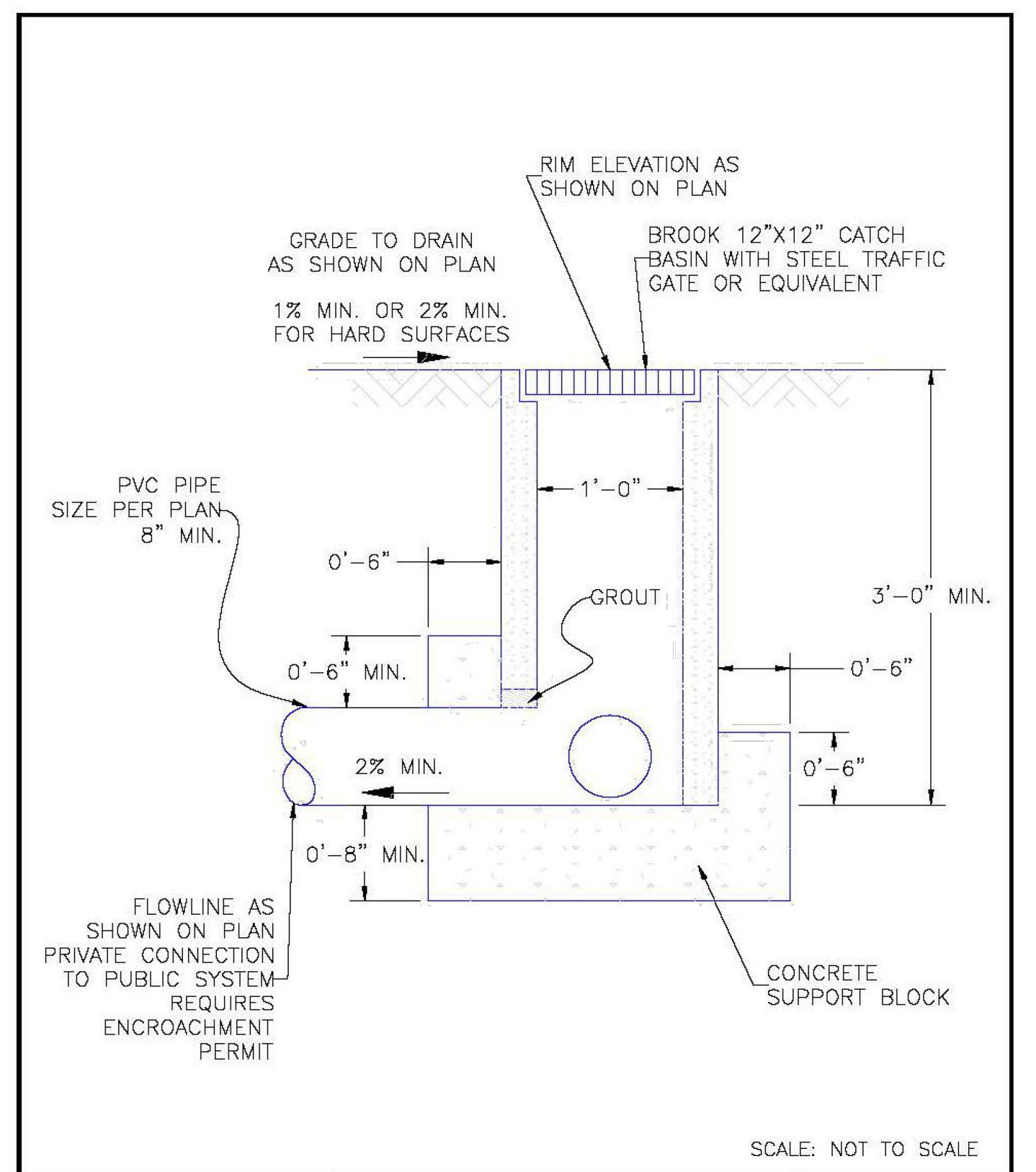
COLORADO LICENSE  
NO. 51909  
1/12/23  
FOR CIVIL ONLY



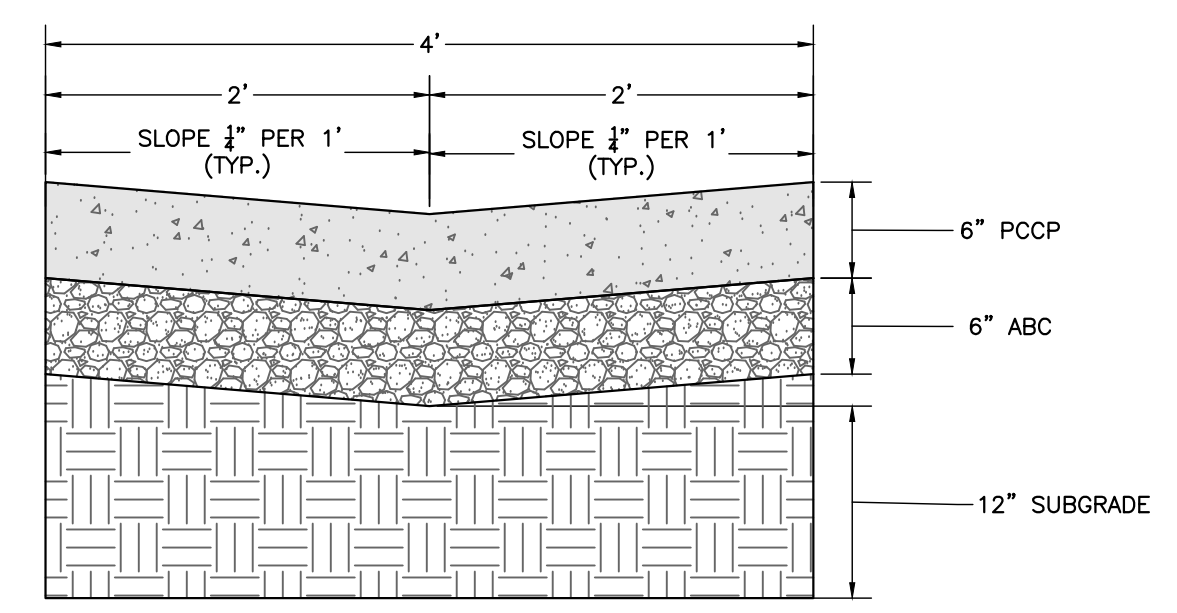
DATE APPROVED: 6/23/20	Typical Curb and Gutter Details Standard Drawing	
APPROVED: Jennifer E. Irvine	REVISION DATE: 6/23/20 FILE NAME: SD_2-20	



DATE APPROVED: 8/11/11	Typical Cross Pan Layout Detail Standard Drawing	
APPROVED: André P. Brackin	REVISION DATE: 12/8/15 FILE NAME: SD_2-26	



DATE APPROVED: 8/11/11	Grate Inlet for Common Areas (guidance) Standard Drawing	
APPROVED: André P. Brackin	REVISION DATE: 11/10/04 FILE NAME: SD_3-8	



**CONCRETE DRAINAGE PAN**  
NOT TO SCALE

LAST SAVED: 12/12/2022 10:31:15 AM PATH: T:\Projects\SSR\_Spec\2020\H-Leisure\_Construction\180649\CD\Drawings\From RMG\Sheet\180649-SS-Construction\_Avenue\_Project\_Construction\_Details.dwg

ROCKY MOUNTAIN GROUP

ARCHITECTS  
Geotechnical  
Materials Testing  
Civil Planning

ARCHITECTS  
Structural  
Forensics

ENGINEERS

SOUTHERN COLORADO

2910 AUSTIN BLUFFS PARKWAY, COLORADO SPRINGS, CO 80918

719.578.0800 WWW.ROCKYMOUNTAINENGINEERS.COM

Structural, Geotechnical, Drainage, Planning, Right-of-Way, Construction

NOT FOR CONSTRUCTION FOR CIVIL ONLY

NORTHCREST PEMB DEVELOPMENT

2510 & 2522 CANADA DRIVE

COLORADO SPRINGS, COLORADO

LEISURE CONSTRUCTION

EROSION CONTROL DETAILS 4

DESIGN DEVELOPMENT

ENG:	DGW	
DRAWN:	TPT	
CHECKED:	DGW	
DATE:	01/12/2023	
#	REVISION	DATE
JOB NO.:	180649	
SHEET NO.:	C-10	

PCD FILE NO PPR-21-036