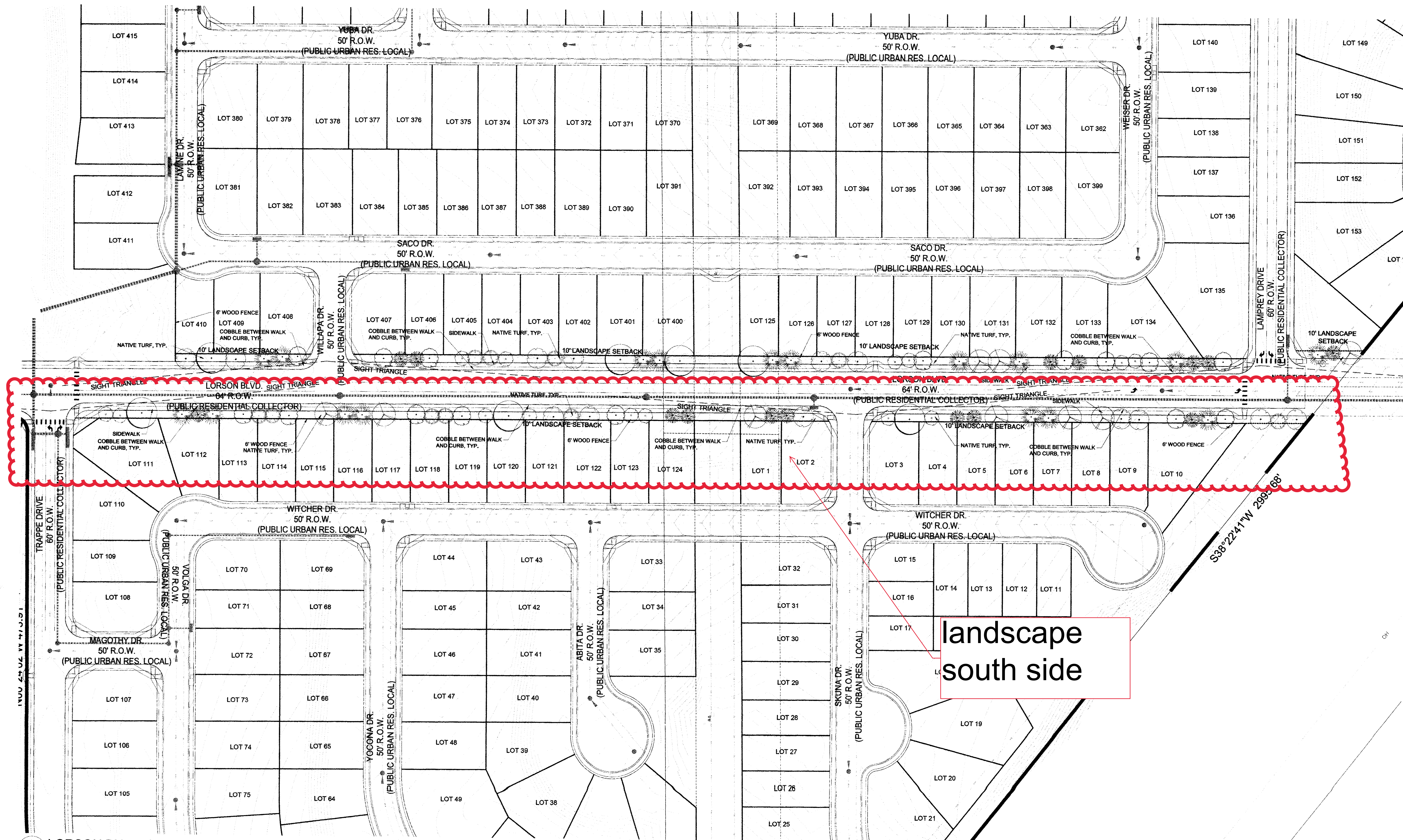


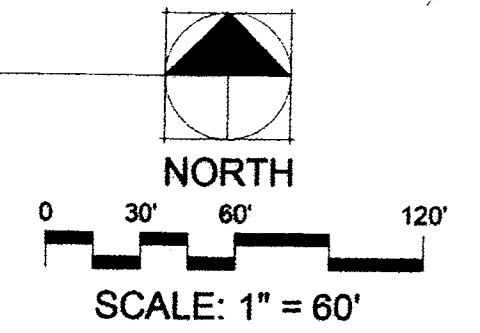
LORSON RANCH

Lorson Ranch East PUD Development & Preliminary Plan

A TRACT OF LAND LOCATED IN A PORTION OF THE SOUTHEAST ONE-QUARTER (SE1/4) OF SECTION 14 A PORTION OF THE SOUTH ONE-HALF (S1/2) OF SECTION 13 A PORTION OF THE NORTH ONE-HALF (N1/2) OF SECTION 24 AND A PORTION OF THE NORTH ONE-HALF (N1/2) OF SECTION 23, TOWNSHIP 15 SOUTH, RANGE 65 WEST OF THE 6TH P.M., EL PASO COUNTY, COLORADO



1 L3 LORSON BLVD. STREETSCAPE



218018251
02/15/18
PCD FILE NO.: PUDSP-16-003

THOMAS THOMAS
Landscape Architecture
702 North Tejon
Colorado (719) 578-8777

REV#	REVISIONS	DATE	DRAWN	CHECKED	APPROVED
1	RESPONSE TO EPC COMMENTS REV1	7/10/17			
2	RESPONSE TO EPC COMMENTS REV2	11/14/17			
3	RESPONSE TO EPC COMMENTS REV3	12/18/17			
4					
5					
6					

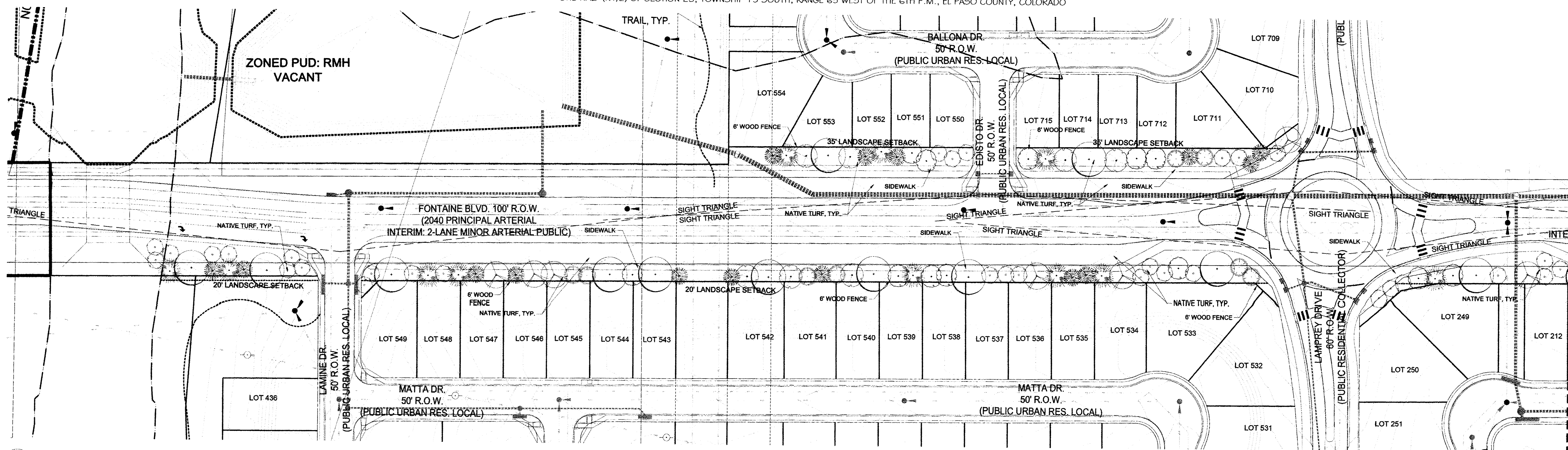
DESIGNED	JRA	10.10.16
DRAWN	JRA	10.10.16
CHECKED	JH	10.10.16
PROJECT NUMBER		2816.13
SCALE:		AS NOTED

Lorson Ranch East
El Paso County, Colorado
PRELIMINARY LANDSCAPE PLAN

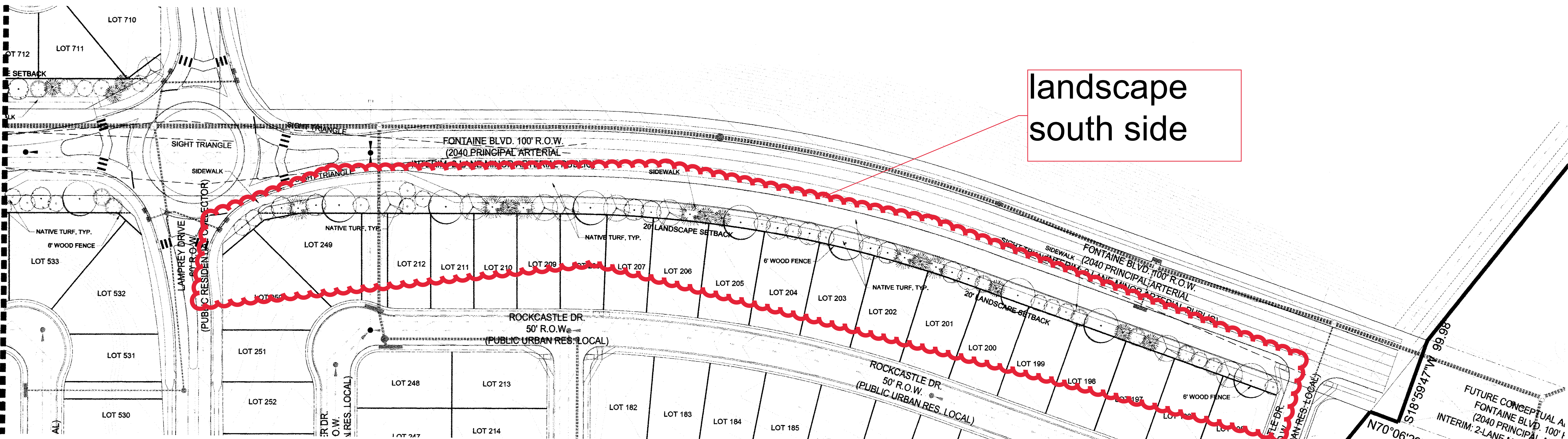
LORSON RANCH

Lorson Ranch East PUD Development & Preliminary Plan

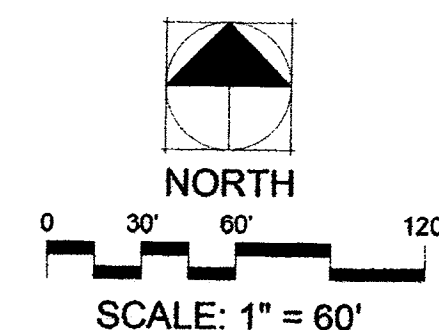
A TRACT OF LAND LOCATED IN A PORTION OF THE SOUTHEAST ONE-QUARTER (SE 1/4) OF SECTION 14 A PORTION OF THE SOUTH ONE-HALF (S 1/2) OF SECTION 13 A PORTION OF THE NORTH ONE-HALF (N 1/2) OF SECTION 24 AND A PORTION OF THE NORTH ONE-HALF (N 1/2) OF SECTION 23, TOWNSHIP 15 SOUTH, RANGE 65 WEST OF THE 6TH P.M., EL PASO COUNTY, COLORADO



1 FOUNTAIN BLVD. STREETSCAPE



2 FOUNTAIN BLVD. STREETSCAPE



218018251
02/16/18

PCD FILE NO.: PUDSP-16-003

THOMAS THOMAS

Planning
Urban Design
Landscape Architecture
707 North Tustin
Cost Mesa (714) 518-8777

REV #	REVISIONS	DATE	DRAWN	CHECKED	APPROVED
1	RESPONSE TO EPC COMMENTS REV1	7/10/17			
2	RESPONSE TO EPC COMMENTS REV2	11/14/17			
3	RESPONSE TO EPC COMMENTS REV3	12/18/17			
4					
5					
6					

DESIGNED	JRA	10.10.16
DRAWN	JRA	10.10.16
CHECKED	JH	10.10.16
PROJECT NUMBER	2816.13	
SCALE	AS NOTED	

Lorson Ranch East

El Paso County, Colorado

PRELIMINARY LANDSCAPE PLAN

L2

2 of 3