

CLAREMONT RANCH FILING NO. 9B

A REPLAT OF LOTS 1-4, CLAREMONT RANCH FILING NO. 9A
IN THE NORTHWEST QUARTER OF SECTION 4, T.14S, R.65W, OF THE 6TH P.M.
COUNTY OF EL PASO, STATE OF COLORADO

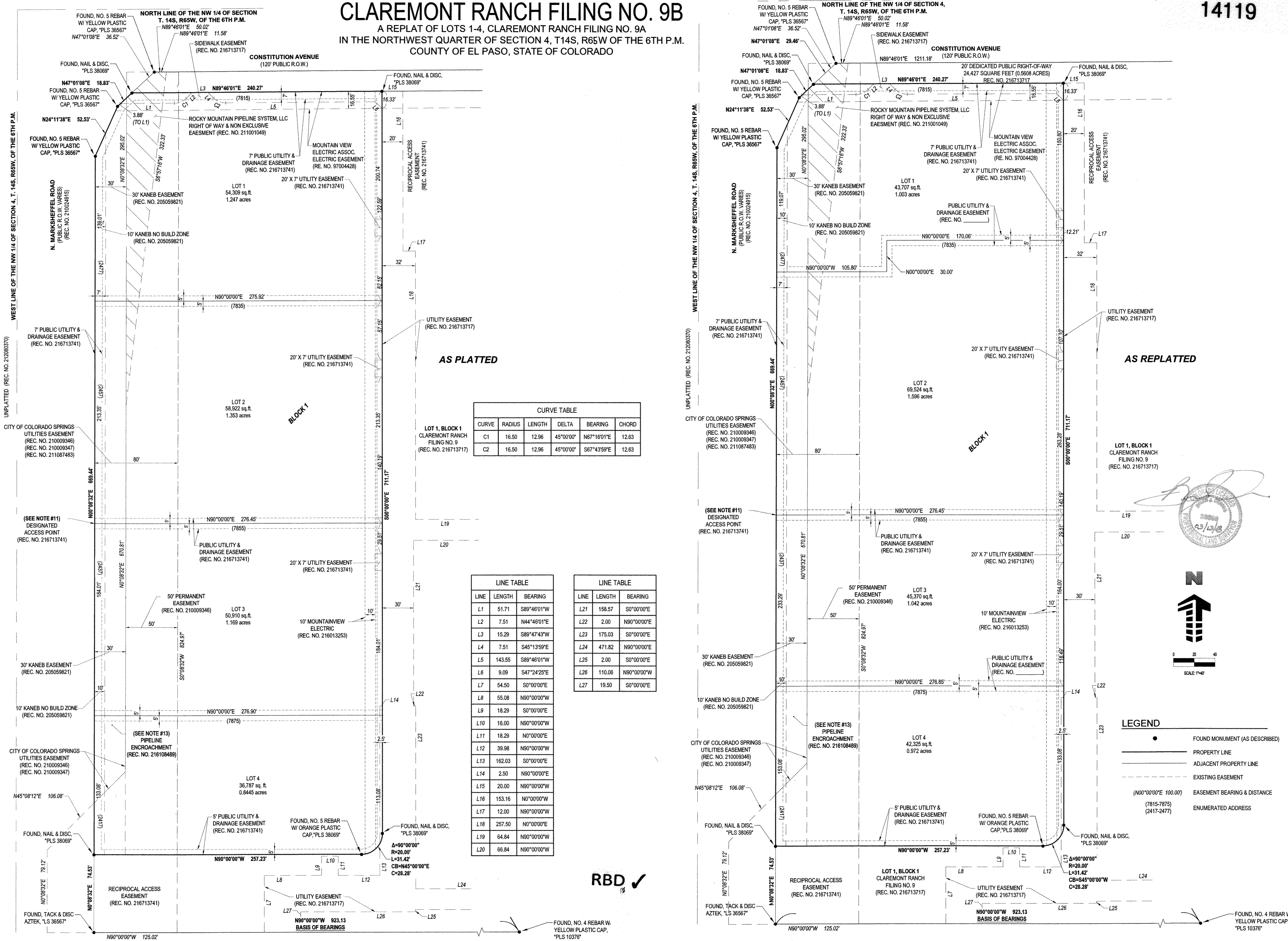
14119

Galloway

Planning, Architecture, Engineering,
6162 S. Willow Drive, Suite 320
Greenwood Village, CO 80111
303.770.8884
www.gallowayus.com

© 2016, Galloway & Company, Inc. All Rights Reserved.

CLAREMONT RANCH
FILING NO. 9B
COUNTY OF EL PASO
STATE OF COLORADO



CURVE TABLE

CURVE	RADIUS	LENGTH	DELTA	BEARING	CHORD
C1	16.50	12.96	45°00'00"	N67°16'01"E	12.63
C2	16.50	12.96	45°00'00"	S67°43'59"E	12.63

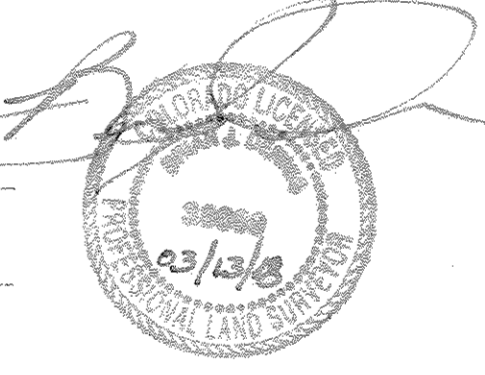
LINE TABLE

LINE	LENGTH	BEARING
L1	51.71	S89°46'01"W
L2	7.51	N44°46'01"E
L3	15.29	S89°47'43"W
L4	7.51	S45°13'59"E
L5	143.55	S89°46'01"W
L6	9.09	S47°24'25"E
L7	54.50	S0°00'00"E
L8	55.08	N90°00'00"W
L9	18.29	S0°00'00"E
L10	16.00	N90°00'00"W
L11	18.29	N0°00'00"E
L12	39.98	N90°00'00"W
L13	162.03	S0°00'00"E
L14	2.50	N90°00'00"E
L15	20.00	N90°00'00"W
L16	153.16	N0°00'00"W
L17	12.00	N90°00'00"W
L18	257.50	N0°00'00"E
L19	64.84	N90°00'00"W
L20	66.84	N90°00'00"W

LINE TABLE

LINE	LENGTH	BEARING
L21	158.57	S0°00'00"E
L22	2.00	N90°00'00"E
L23	175.03	S0°00'00"E
L24	471.82	N90°00'00"E
L25	2.00	S0°00'00"E
L26	110.06	N90°00'00"W
L27	19.50	S0°00'00"E

RBD ✓



LEGEND

- FOUND MONUMENT (AS DESCRIBED)
- PROPERTY LINE
- - - ADJACENT PROPERTY LINE
- - - EXISTING EASEMENT
- (N00°00'00"E 100.00') (7815-7875) (2417-2477) EASEMENT BEARING & DISTANCE
- ENUMERATED ADDRESS

Date Issue / Description Init.

- 12-20-2017 ADDRESS COMMENTS AAY
- 1-6-2018 ADDRESS COMMENTS AAY
- 1-16-2018 ADDRESS COMMENTS AAY
- 1-23-2018 ADDRESS COMMENTS AAY
- 3-13-2018 SIGNATURE BLOCK AAY

Project No: EDI000008.01
 Drawn By: AAY
 Checked By: BJD
 Date: 11/07/2017