



CCES
RESPONSES

Civil Engineer Stormwater Best Management Practice (permanent) Certification Letter

October 16, 2020

El Paso County
Planning and Community Development
2880 International Circle, Suite 110
Colorado Springs, CO 80910

Attn.: Brad Walters, Inspections Supervisor

RE: **Flying Horse North Filing No. 1**

See ECM Chap 5.10.6.B for details on what type of statement should be included in the letter. Including:

State in the letter that the site and adjacent properties (as affected by work performed under the County permit) are stable with respect to settlement and subsidence, sloughing of cut and fill slopes, revegetation or other ground cover, and that the improvements (public improvements, site grading) meet or exceed the minimum design requirements.

For sites including detention and/or water quality facilities, the certification letter shall include a statement that the facilities provide the required storage volume and will meet the required release rates, as documented by an attached UDFCD design form submitted with the original application, the stage areas, elevations and outlet dimensions

The permanent stormwater Best Management Practices (BMP) consists of a four individual Private Full Spectrum Extended Spectrum Retention Pond. These facilities are described by

ADDED ADDITIONAL REQUIRED LANGUAGE TO LETTER ALONG WITH SDI WORKSHEETS FOR EACH FACILITY.

- Pond 1 within Tract B
- Pond 4 within Tract F
- Pond 8 within Tract I
- Pond 12 within Tract E
- Golf Course Irrigation Reservoir (Jurisdictional Facility) within Tract L

Based upon this information and information gathered during periodic site visits to the project during significant/key phases of the stormwater BMP installation, Classic Consulting Engineers & Surveyors, LLC is of the opinion that the stormwater BMPs have been constructed in general compliance with the approved Construction Plans, and Specifications as filed with El Paso County and the State Engineer. The jurisdictional facility mentioned above was approved by the State Engineer for construction on September 17, 2018 and acceptance of construction was given on February 12, 2020. (See attached documents)

Statement Of Engineer In Responsible Charge:

I, Marc A. Whorton, a registered Professional Engineer in the State of Colorado, in accordance with Sections 5.2 and 5.3 of the Bylaws and Rules of the State Board of Registration for Professional Engineers and Professional Land Surveyors, do hereby certify that I or a person under my responsible charge periodically observed the construction of the above mentioned project. Based on the on-site

field observations and review of pertinent as-built documentation, it is my professional opinion that the required permanent BMPs have been installed and are in general compliance with the approved Construction Plans, and Specifications as filed with El Paso County and the State Engineer. For BMPs with a Water Quality Capture Volume (WQCV), I have attached the post-construction As-Built drawings. The As-Built drawings accurately depict the final installation of the stormwater BMPs.



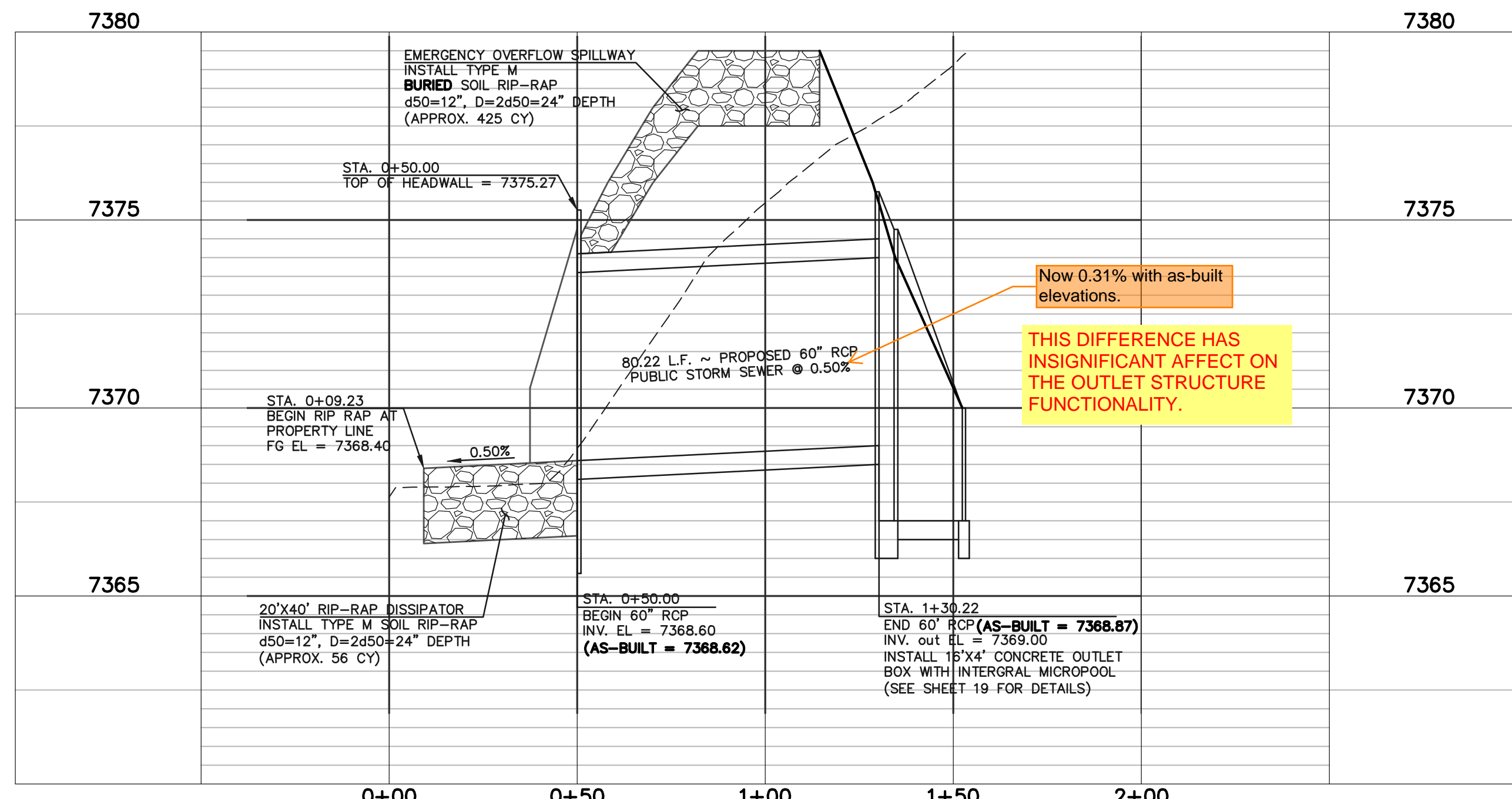
Marc A. Whorton, P.E.
Colorado No. 37155



Seal & Signature of P.E. Goes Here

Specifically to forebays: most of the forebays for each pond have significant enough changes from design to as-built condition. So please confirm with calcs that forebay volume is not less than the required volume shown on the UD-BMP spreadsheets submitted with the original FDR. Because for most forebays no extra capacity was provided as a buffer (although some show at most 0.001 ac-ft extra volume, which might be enough).

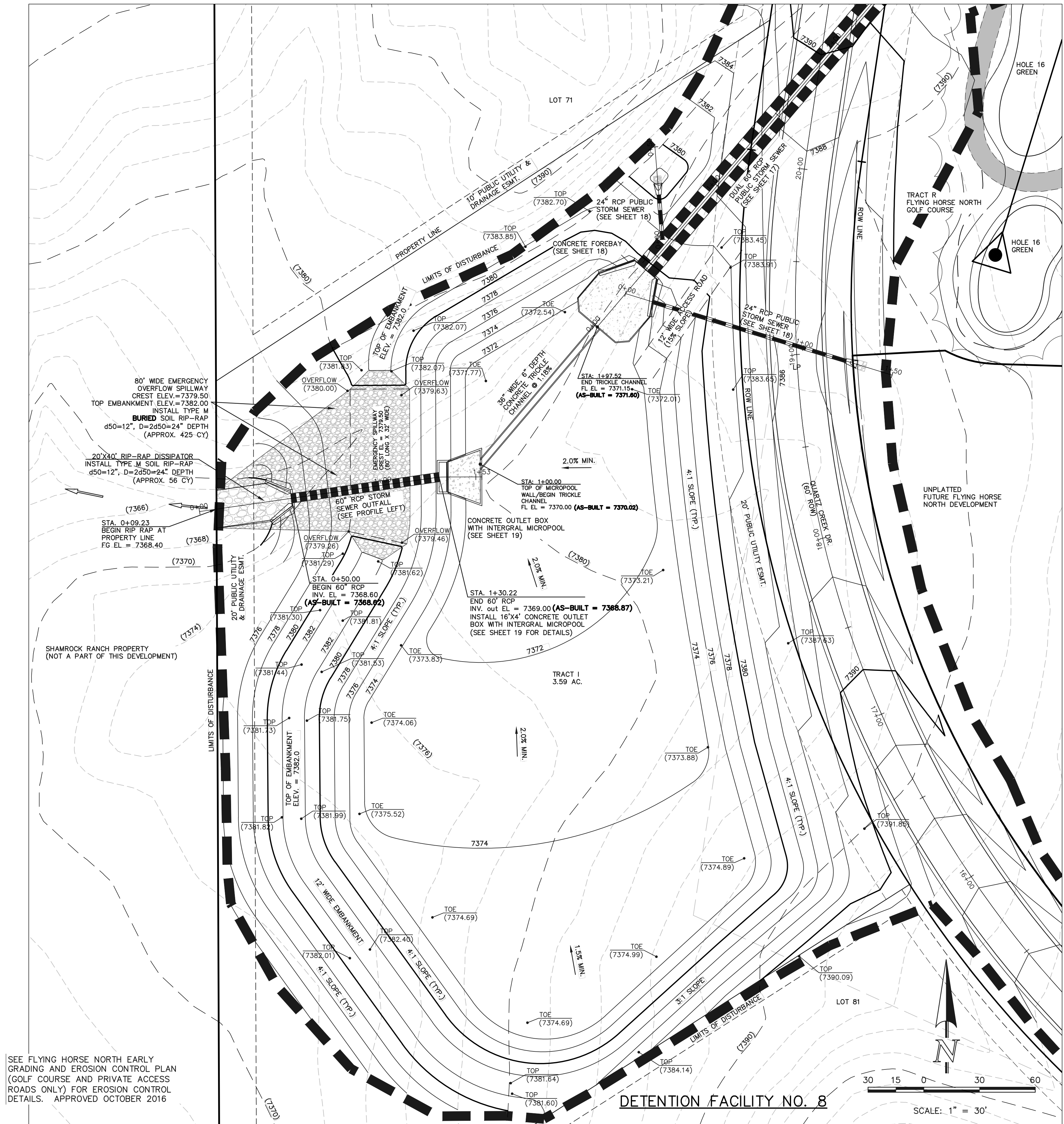
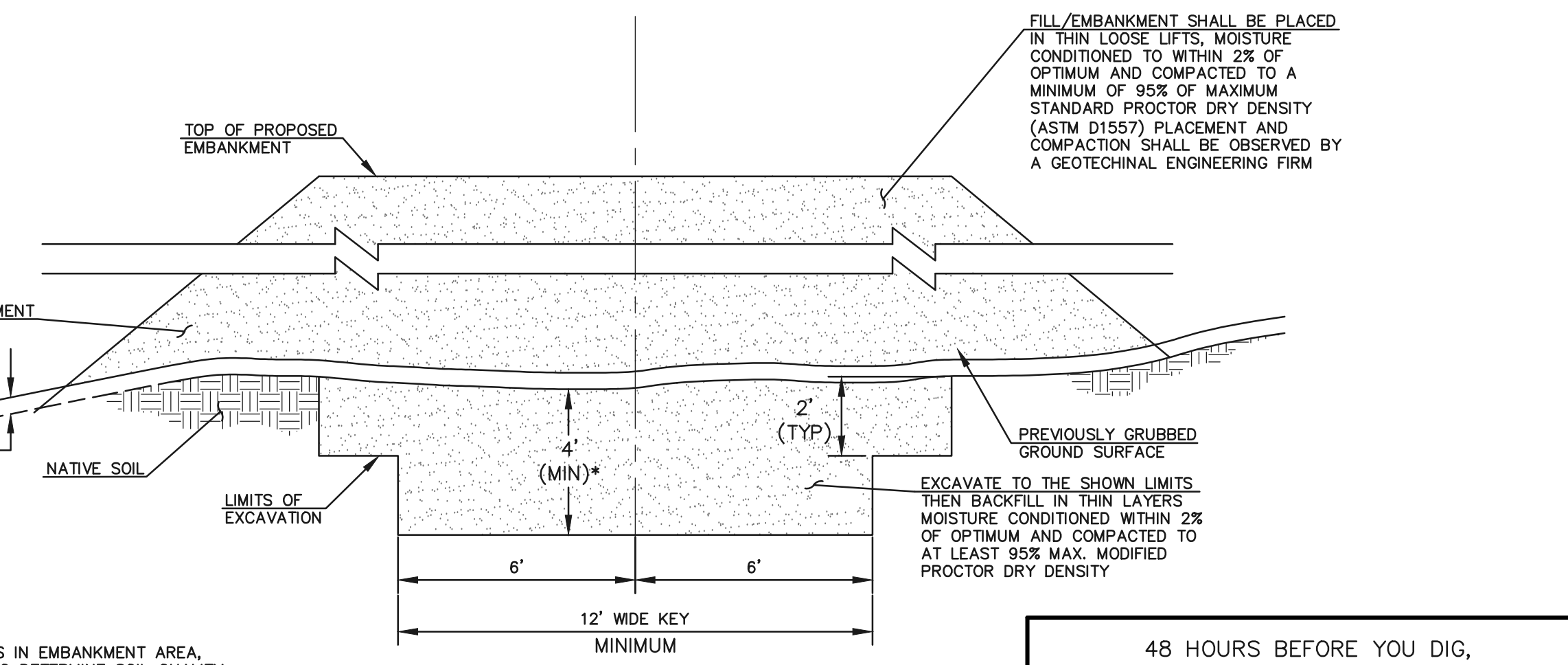
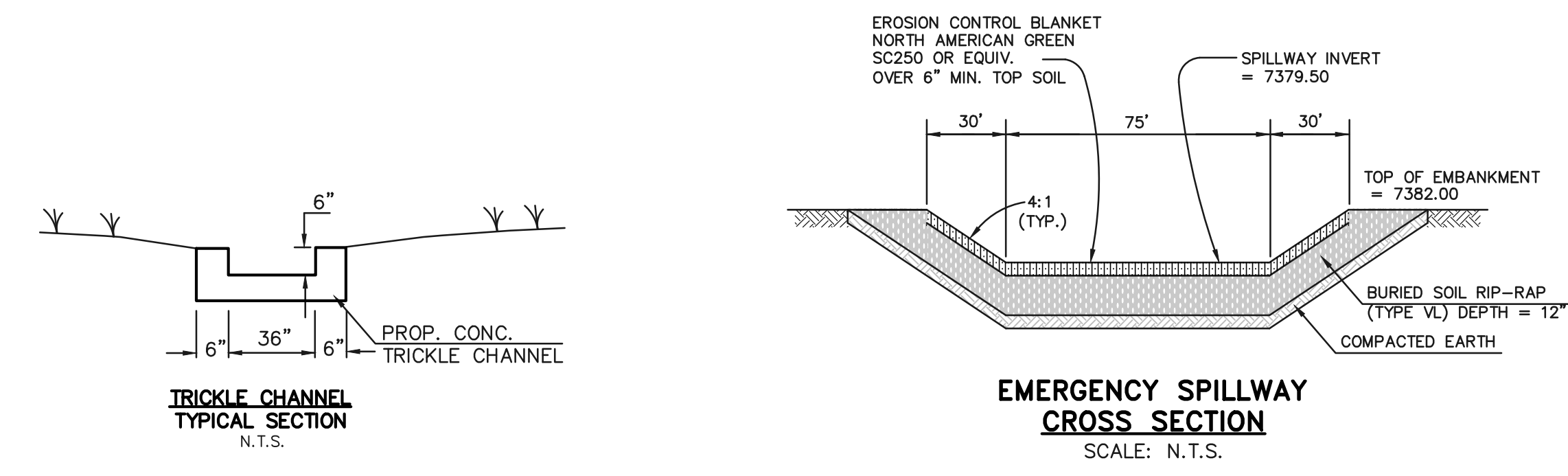
ADDED ADDITIONAL AS-BUILT INFO. RELATED TO VOLUME OF EACH FOREBAY ALONG WITH VOLUME DESIGN INFO. FROM FDR.



**DETENTION FACILITY NO. 8
POND OUTLET PROFILE**
SCALE: HORIZONTAL 1"=30'
VERTICAL 1"=3'

AS-BUILT

STRUCTURE AS-BUILTS TAKEN
11/26/18
TOPO. AS-BUILTS TAKEN
9/25/19 & 11/24/19



DETENTION FACILITY NO. 8
SCALE: 1" = 30'

SEE FLYING HORSE NORTH EARLY GRADING AND EROSION CONTROL PLAN (GOLF COURSE AND PRIVATE ACCESS ROADS ONLY) FOR EROSION CONTROL DETAILS. APPROVED OCTOBER 2016

* UPON GRUBBING EXISTING SOILS IN EMBANKMENT AREA, ENGINEER SHALL BE CONTACTED TO DETERMINE SOIL QUALITY. IF POOR PERMEABILITY IS FOUND (I.E. SANDY-SILT) ONLY TOP 2' x 14' PORTION OF EMBANKMENT KEY IS REQUIRED FOR CONSTRUCTION.

48 HOURS BEFORE YOU DIG, CALL UTILITY LOCATORS
811
UTILITY NOTIFICATION CENTER OF COLORADO
IT'S THE LAW

THE LOCATIONS OF EXISTING UNDERGROUND UTILITIES ARE SHOWN IN AN APPROXIMATE WAY ONLY. THE CONTRACTOR SHALL DETERMINE THE EXACT LOCATION OF ALL EXISTING UTILITIES BEFORE COMMENCING WORK. THE CONTRACTOR SHALL BE FULLY RESPONSIBLE FOR ANY AND ALL DAMAGES WHICH MIGHT BE CAUSED BY HIS FAILURE TO EXACTLY LOCATE AND PRESERVE ANY AND ALL UNDERGROUND UTILITIES.

NO.	REVISION	DATE
1	REVISED PER COUNTY COMMENTS	4-4-18

REVIEW:
PREPARED UNDER THE DIRECT SUPERVISION FOR AND ON BEHALF OF CLASSIC CONSULTING ENGINEERS AND SURVEYORS, LLC

MARC A. WHITTON, COLORADO P.E. #37155
DATE: 10/16/2020

CLASSIC
CONSULTING ENGINEERS & SURVEYORS

619 N. Cascade Avenue, Suite 200
Colorado Springs, Colorado 80903
(719) 785-0790
(719) 785-0799 (Fax)

FLYING HORSE NORTH FILING NO. 1
DRAINAGE IMPROVEMENT PLANS
DETENTION FACILITY NO. 8
POND PLAN

DESIGNED BY	MAW	SCALE	DATE	06-13-18
DRAWN BY	MAW	(H) 1" = 30'	SHEET	16 OF 22
CHECKED BY	(V)	1" = N/A	JOB NO.	1096.11

N:\TOPIC DRAWINGS\CONSTRUCTION\Plan Pond Plans\AS-BUILT\Plan AS-BUILT.dwg, 10/14/2020, 2:40:53 PM, 1:1