

PREPARED BY:  
  
**DREXEL, BARRELL & CO.**  
 Engineers • Surveyors  
 3 SOUTH 7TH STREET  
 COLORADO SPRINGS, COLORADO 80905  
 CONTACT: TIM D. McCONNELL, P.E.  
 (719)260-0887  
 BOULDER • COLORADO SPRINGS  
 GRAND JUNCTION

CLIENT:  
**H&H**  
**Tires & Service**  
 5770 S HIGHWAY 85/87  
 COLORADO SPRINGS, CO. 80911  
 (719)392-4819  
 CONTACT: QUENTYN HOUTCHENS

SITE DEVELOPMENT PLAN  
**H & H TIRE**  
 5770 S. HIGHWAY 85/87  
 EL PASO COUNTY, COLORADO

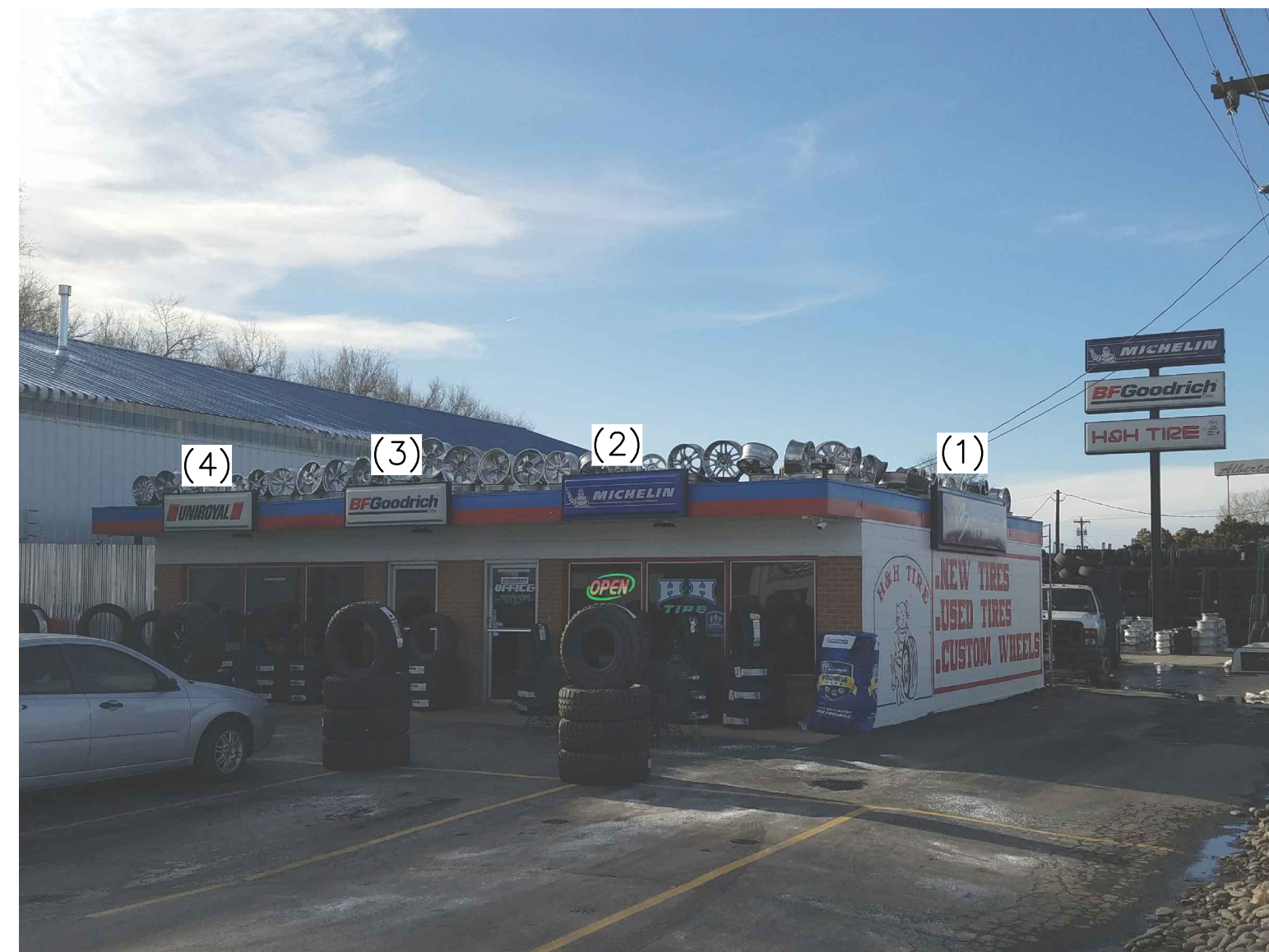
ISSUE	DATE
INITIAL SUBMITTAL	02/19/20
LATEST ISSUE	03/11/20
DESIGNED BY:	TDM
DRAWN BY:	CRS
CHECKED BY:	TDM
FILE NAME:	20898-01SP01

DRAWING SCALE:  
 HORIZONTAL: 1" = 30'  
 VERTICAL: N/A

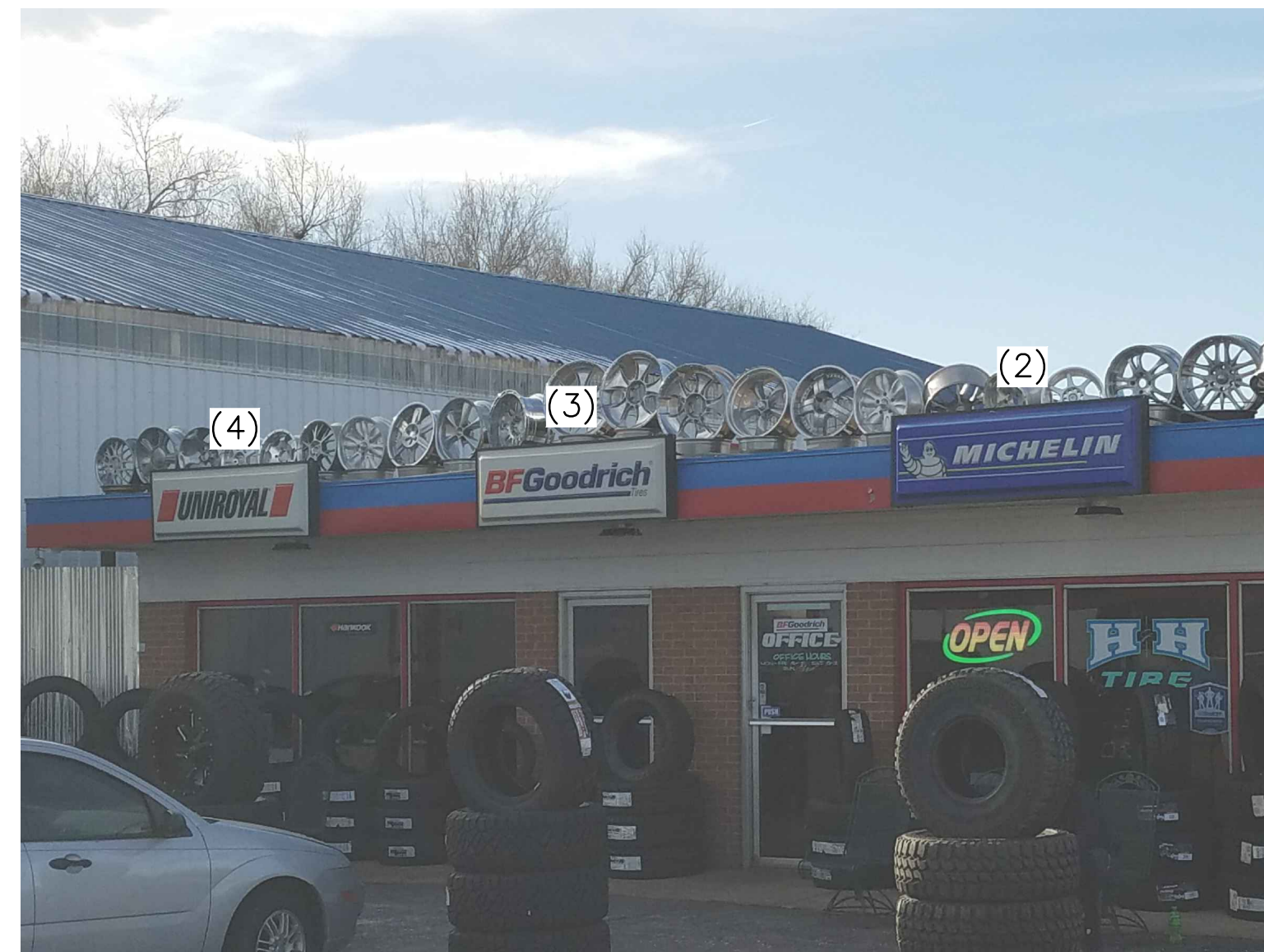
SITE PLAN  
 PROJECT NO. 20898-01CSCV  
 DRAWING NO.  
**SDP**  
 SHEET: 2 OF 11







TIRE SALES BUILDING SIGNS – DETAIL A



TIRE SALES BUILDING SIGNS – DETAIL B  
(3 SIGNS @ 2'x6' EACH)



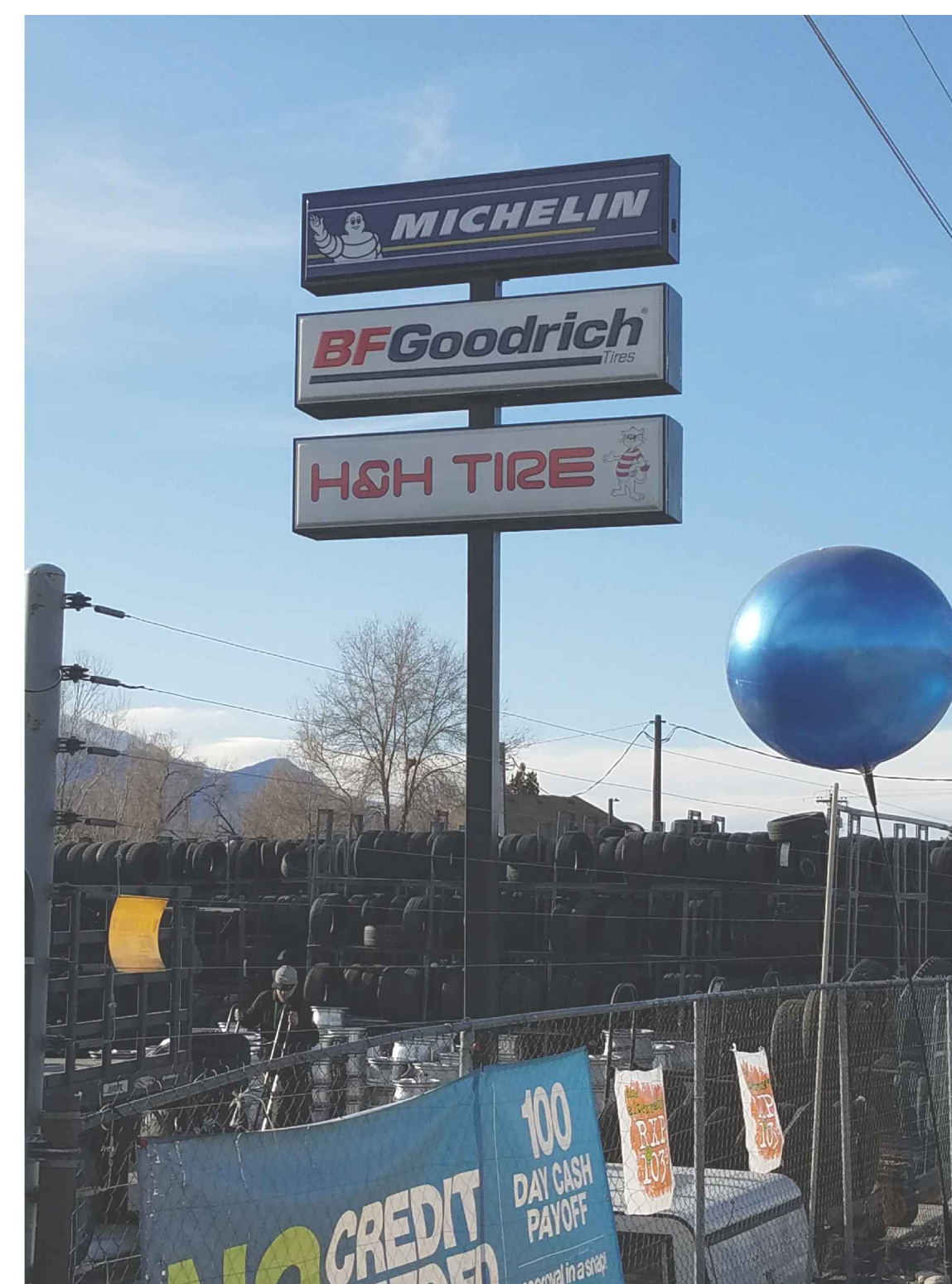
TIRE SALES BUILDING SIGN – DETAIL C  
(1 SIGN @ 3'x8')



AUTO SALE/SERVICE BUILDING SIGN – DETAIL A



AUTO SALE/SERVICE BUILDING SIGN – DETAIL B  
(1 SIGN @ 3'x8')

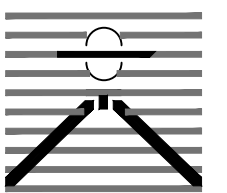


25' POLE SIGN – DETAIL A



25' POLE SIGN – DETAIL B  
(3 SIGNS – 3'x8' EACH)

PREPARED BY:



DREXEL, BARRELL & CO.  
Engineers • Surveyors  
3 SOUTH 7TH STREET  
COLORADO SPRINGS, COLORADO 80905  
CONTACT: TIM D. MCCONNELL, P.E.  
(719)260-0887  
BOULDER • COLORADO SPRINGS  
GRAND JUNCTION

CLIENT:

**H&H**  
Tires & Service

5770 S HIGHWAY 85/87  
COLORADO SPRINGS, CO. 80911  
(719)392-4819  
CONTACT: QUENTYN HOUTCHENS

SITE DEVELOPMENT PLAN

**H & H TIRE**  
5770 S. HIGHWAY 85/87  
EL PASO COUNTY, COLORADO

ISSUE	DATE
INITIAL SUBMITTAL	02/19/20
LATEST ISSUE	03/11/20

DESIGNED BY:	TDM
DRAWN BY:	CRS
CHECKED BY:	TDM
FILE NAME:	20898-01DT01

DRAWING SCALE:  
HORIZONTAL: 1" = 30'  
VERTICAL: N/A

EXISTING  
SIGN  
DETAILS

PROJECT NO. 20898-01CSCV  
DRAWING NO.

**DT-2**

SHEET: 4 OF 11

NOTE: REFER TO SHEET 2 FOR  
SIGN NUMBER REFERENCES