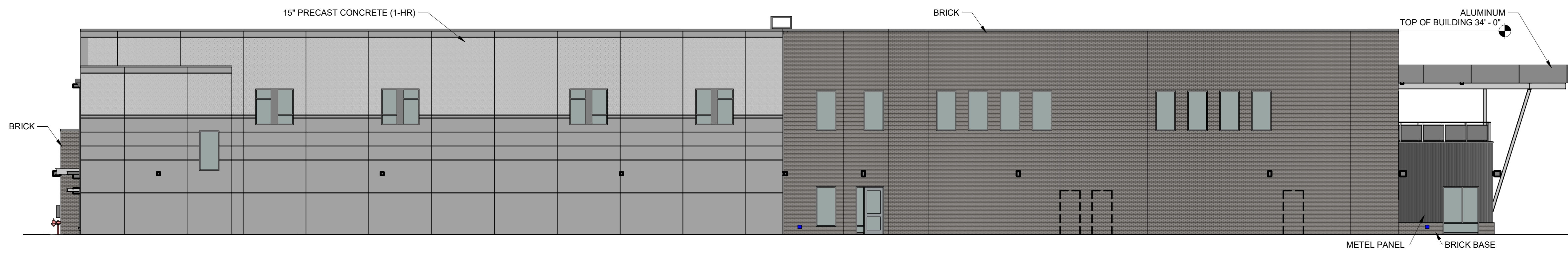
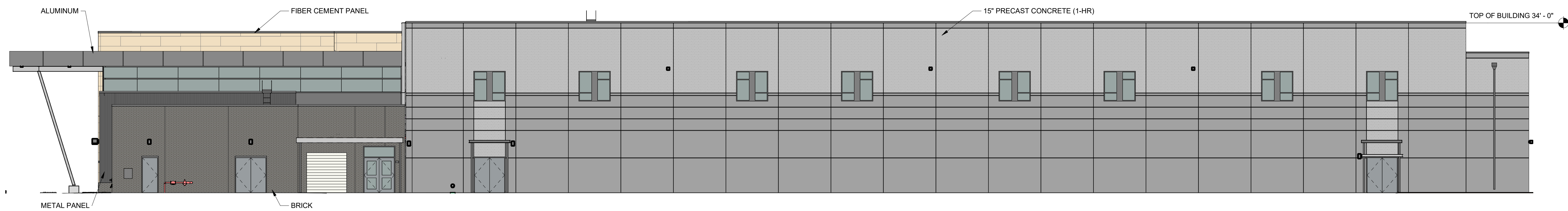


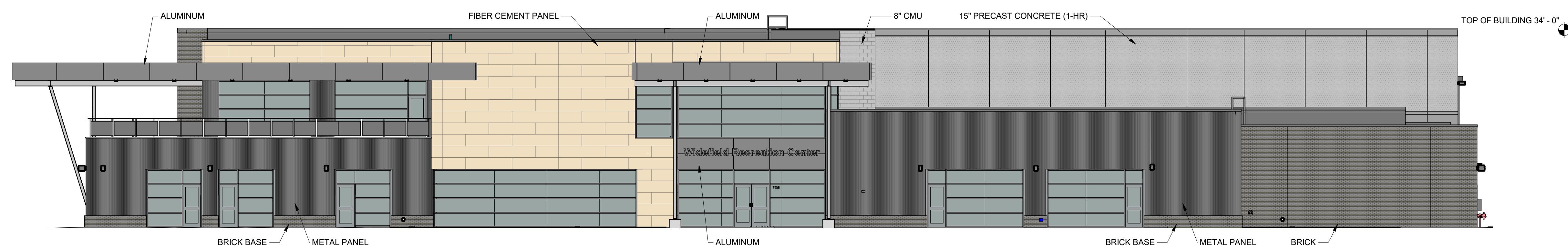
29 NORTH ELEVATION
Scale: 3/32" = 1'-0"



28 EAST ELEVATION
Scale: 3/32" = 1'-0"



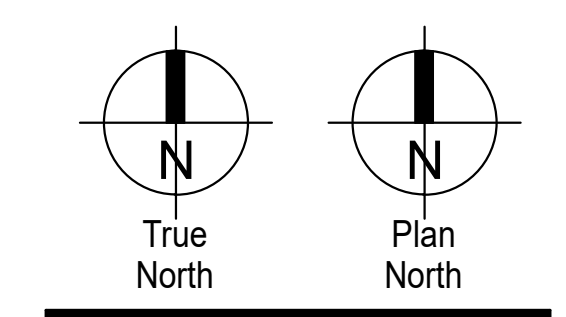
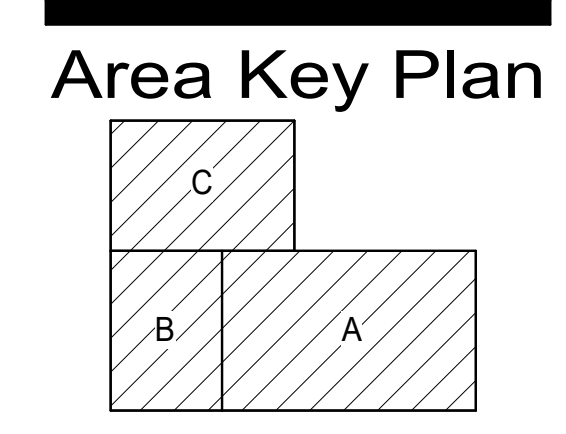
27 SOUTH ELEVATION
Scale: 3/32" = 1'-0"



26 WEST ELEVATION
Scale: 3/32" = 1'-0"



Construction Documents
Drawn: _____ DH
Checked: _____ KO
Issued: 28 January 2022
Revised: _____



BUILDING ELEVATIONS - OVERALL