

GENERAL CONSTRUCTION NOTES:

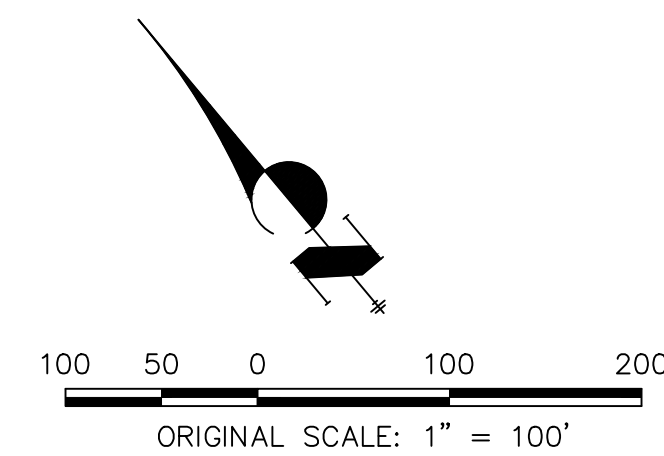
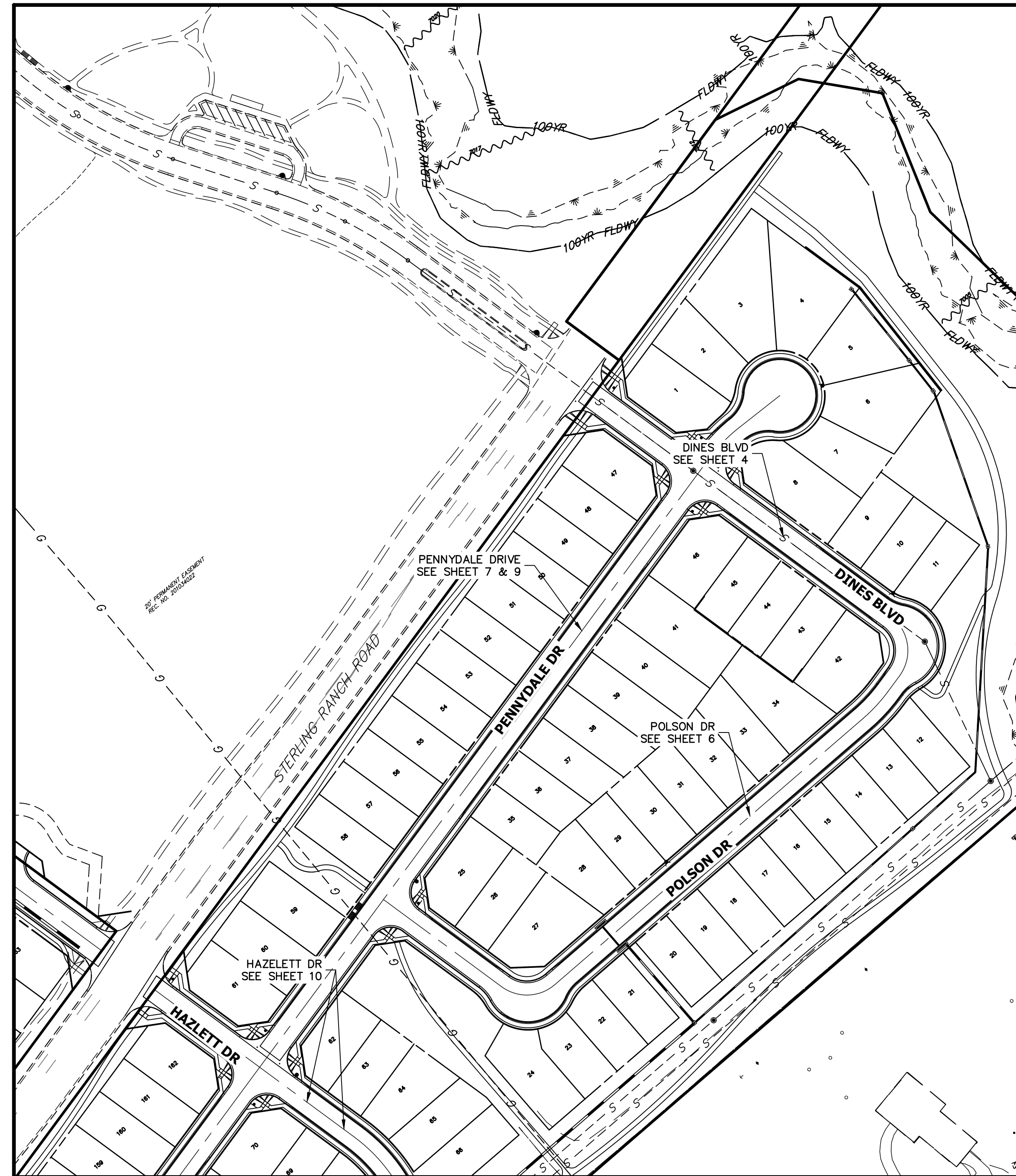
- IT SHALL BE THE RESPONSIBILITY OF THE CONTRACTOR TO VERIFY THE EXISTENCE AND LOCATION OF ALL UNDERGROUND UTILITIES ALONG THE ROUTE OF THE WORK. THE OMISSION FROM OR THE INCLUSION OF UTILITY LOCATIONS ON THE PLANS IS NOT TO BE CONSIDERED AS THE NONEXISTENCE OF OR A DEFINITE LOCATION OF EXISTING UNDERGROUND UTILITIES.
- THE CONTRACTOR WILL TAKE THE NECESSARY PRECAUTIONS TO PROTECT EXISTING UTILITIES FROM DAMAGE DUE TO THIS OPERATION. ANY DAMAGE TO THE UTILITIES WILL BE REPAIRED AT THE CONTRACTOR'S EXPENSE, AND ANY SERVICE DISRUPTION WILL BE SETTLED BY THE CONTRACTOR.
- ADDITIONAL EROSION CONTROL STRUCTURES MAY BE REQUIRED AT THE TIME OF CONSTRUCTION.
- ALL BACKFILL, SUB-BASE, AND/OR BASE COURSE (CLASS 6) MATERIAL SHALL BE COMPACTED PER THE SOILS ENGINEER'S RECOMMENDATIONS, AND APPROVED BY EL PASO COUNTY PCD.
- ALL STATIONING IS CENTERLINE OF IMPROVEMENTS UNLESS OTHERWISE INDICATED. ALL ELEVATIONS ARE FLOW LINE UNLESS OTHERWISE INDICATED AS TOP BACK OF CURB (TBC), ASPHALT (ASP), OR TOP OF INLET OR BOX (TOB).
- ALL DISTURBED PAVEMENT EDGES SHALL BE CUT TO NEAT LINES. REPAIR SHALL CONFORM TO EPC ECM APPENDIX K - 1.2C.
- ALL INTERSECTION ACCESSES TO BE CONSTRUCTED WITH A 25 FOOT SIGHT VISIBILITY TRIANGLES IS REQUIRED AND THERE SHALL BE NO OBSTRUCTIONS GREATER THAN 18" VERTICAL IN THIS AREA.
- ALL CULVERTS AND STORM DRAIN PIPES SHALL BE SMOOTH INTERIOR CORRUGATED POLYETHYLENE PIPE (HDPE), REINFORCED CONCRETE PIPE (RCP). ALL CULVERTS SHALL BE PLACED COMPLETE WITH FLARED END SECTIONS. ADEQUACY OF MATERIAL THICKNESS FOR ANY CSP INSTALLED SHALL BE VERIFIED BY OWNER'S GEOTECHNICAL ENGINEER TO SUPPORT MINIMUM 50 YEAR DESIGN LIFE. CULVERTS MUST CONFORM TO EPC ECM SECTION 3.32 - CULVERTS.
- ASPHALT THICKNESS AND BASE COURSE THICKNESS (COMPACTED) FOR ROADS SHALL BE PER DESIGN REPORT BY OWNER'S GEOTECHNICAL ENGINEER. OWNER'S GEOTECHNICAL ENGINEER TO BE ON SITE AT THE TIME OF ROAD CONSTRUCTION TO EVALUATE SOIL CONDITIONS AND DETERMINE IF ADDITIONAL MEASURES ARE NECESSARY TO ASSURE STABILITY OF THE NEW ROADS. PAVEMENT DESIGN SHALL BE APPROVED BY EL PASO COUNTY DEVELOPMENT SERVICES ENGINEERING DIVISION PRIOR TO CONSTRUCTION.

SIGNING AND STRIPING NOTES:

- ALL SIGNS AND PAVEMENT MARKINGS SHALL BE IN COMPLIANCE WITH THE CURRENT MANUAL ON UNIFORM TRAFFIC CONTROL DEVICES (MUTCD).
- REMOVAL OF EXISTING PAVEMENT MARKINGS SHALL BE ACCOMPLISHED BY A METHOD THAT DOES NOT MATERIALLY DAMAGE THE PAVEMENT. THE PAVEMENT MARKINGS SHALL BE REMOVED TO THE EXTENT THAT THEY WILL NOT BE VISIBLE UNDER DAY OR NIGHT CONDITIONS. AT NO TIME WILL IT BE ACCEPTABLE TO PAINT OVER EXISTING PAVEMENT MARKINGS.
- ANY DEVIATION FROM THE STRIPING AND SIGNING PLAN SHALL BE APPROVED BY EL PASO COUNTY PLANNING AND COMMUNITY DEVELOPMENT.
- ALL SIGNS SHOWN ON THE SIGNING AND STRIPING PLAN SHALL BE NEW SIGNS. EXISTING SIGNS MAY REMAIN OR BE REUSED IF THEY MEET CURRENT EL PASO COUNTY AND MUTCD STANDARDS.
- STREET NAME AND REGULATORY STOP SIGNS SHALL BE ON THE SAME POST AT INTERSECTIONS.
- ALL REMOVED SIGNS SHALL BE DISPOSED OF IN A PROPER MANNER BY THE CONTRACTOR.
- ALL STREET NAME SIGNS SHALL HAVE "D" SERIES LETTERS, WITH LOCAL ROADWAY SIGNS BEING 4" UPPER-LOWER CASE LETTERING ON 8" BLANK AND NON-LOCAL ROADWAY SIGNS BEING 6" LETTERING, UPPER-LOWER CASE ON 12" BLANK, WITH A WHITE BORDER THAT IS NOT RECESSED. MULTI-LANE ROADWAYS WITH SPEED LIMITS OF 40 MPH OR HIGHER SHALL HAVE 8" UPPER-LOWER CASE LETTERING ON 18" BLANK WITH A WHITE BORDER THAT IS NOT RECESSED. THE WIDTH OF THE NON-RECESSED WHITE BORDERS SHALL MATCH PAGE 255 OF THE 2012 MUTCD "STANDARD HIGHWAY SIGNS"
- ALL TRAFFIC SIGNS SHALL HAVE A MINIMUM HIGH INTENSITY PRISMATIC GRADE SHEETING.
- ALL LOCAL RESIDENTIAL STREET SIGNS SHALL BE MOUNTED ON A 1.75" X 1.75" SQUARE TUBE SIGN POST AND STUB POST BASE. FOR OTHER APPLICATIONS, REFER TO THE CDOT STANDARD S-614-8 REGARDING USE OF THE P2 TUBULAR STEEL POST SLIPBASE DESIGN.
- ALL SIGNS SHALL BE SINGLE SHEET ALUMINUM WITH 0.100" MINIMUM THICKNESS.
- ALL LIMIT LINES/STOP LINES, CROSSWALK LINES, PAVEMENT LEGENDS, AND ARROWS SHALL BE A MINIMUM 125 MIL THICKNESS PREFORMED THERMOPLASTIC PAVEMENT MARKINGS WITH TAPERED LEADING EDGES PER CDOT STANDARD S-627-1. WORD AND SYMBOL MARKINGS SHALL BE THE NARROW TYPE. STOP BARS SHALL BE 24" IN WIDTH. CROSSWALKS LINES SHALL BE 12" WIDE AND 8' LONG PER CDOT S-627-1.
- ALL LONGITUDINAL LINES SHALL BE A MINIMUM 15MIL THICKNESS EPOXY PAINT. ALL NON-LOCAL RESIDENTIAL ROADWAYS SHALL INCLUDE BOTH RIGHT AND LEFT EDGE LINE STRIPING AND ANY ADDITIONAL STRIPING AS REQUIRED BY CDOT S-627-1.
- THE CONTRACTOR SHALL NOTIFY EL PASO COUNTY PLANNING AND COMMUNITY DEVELOPMENT (719) 520-6819 PRIOR TO AND UPON COMPLETION OF SIGNING AND STRIPING.
- THE CONTRACTOR SHALL OBTAIN A WORK IN THE RIGHT OF WAY PERMIT FROM THE EL PASO COUNTY DEPARTMENT OF PUBLIC WORKS (DPW) PRIOR TO ANY SIGNAGE OR STRIPING WORK WITHIN AN EXISTING EL PASO COUNTY ROADWAY.

STANDARD NOTES FOR EL PASO COUNTY CONSTRUCTION PLANS:

- ALL DRAINAGE AND ROADWAY CONSTRUCTION SHALL MEET THE STANDARDS AND SPECIFICATIONS OF THE CITY OF COLORADO SPRINGS/EL PASO COUNTY DRAINAGE CRITERIA MANUAL, VOLUMES 1 AND 2, AND THE EL PASO COUNTY ENGINEERING CRITERIA MANUAL.
- CONTRACTOR SHALL BE RESPONSIBLE FOR THE NOTIFICATION AND FIELD NOTIFICATION OF ALL EXISTING UTILITIES, WHETHER SHOWN ON THE PLANS OR NOT, BEFORE BEGINNING CONSTRUCTION. LOCATION OF EXISTING UTILITIES SHALL BE VERIFIED BY THE CONTRACTOR PRIOR TO CONSTRUCTION. CALL 811 TO CONTACT THE UTILITY NOTIFICATION CENTER OF COLORADO (UNCC).
- CONTRACTOR SHALL KEEP A COPY OF THESE APPROVED PLANS, THE GRADING AND EROSION CONTROL PLAN, THE STORMWATER MANAGEMENT PLAN (SWMP), THE SOILS AND GEOTECHNICAL REPORT, AND THE APPROPRIATE DESIGN AND CONSTRUCTION STANDARDS AND SPECIFICATIONS AT THE JOB SITE AT ALL TIMES, INCLUDING THE FOLLOWING:
 - EL PASO COUNTY ENGINEERING CRITERIA MANUAL (ECM)
 - CITY OF COLORADO SPRINGS/EL PASO COUNTY DRAINAGE CRITERIA MANUAL, VOLUMES 1 AND 2
 - COLORADO DEPARTMENT OF TRANSPORTATION (CDOT) STANDARD SPECIFICATIONS FOR ROAD AND BRIDGE CONSTRUCTION
 - CDOT M & S STANDARDS
- NOTWITHSTANDING ANYTHING DEPICTED IN THESE PLANS IN WORDS OR GRAPHIC REPRESENTATION, ALL DESIGN AND CONSTRUCTION RELATED TO ROADS, STORM DRAINAGE AND EROSION CONTROL SHALL CONFORM TO THE STANDARDS AND REQUIREMENTS OF THE MOST RECENT VERSION OF THE RELEVANT ADOPTED EL PASO COUNTY STANDARDS, INCLUDING THE LAND DEVELOPMENT CODE, THE ENGINEERING CRITERIA MANUAL, THE DRAINAGE CRITERIA MANUAL, AND THE DRAINAGE CRITERIA MANUAL VOLUME 2. ANY DEVIATIONS FROM REGULATIONS AND STANDARDS MUST BE REQUESTED, AND APPROVED, IN WRITING. ANY MODIFICATIONS NECESSARY TO MEET CRITERIA AFTER-THE-FACT WILL BE ENTIRELY THE DEVELOPER'S RESPONSIBILITY TO RECTIFY.
- IT IS THE DESIGN ENGINEER'S RESPONSIBILITY TO ACCURATELY SHOW EXISTING CONDITIONS, BOTH ONSITE AND OFFSITE, ON THE CONSTRUCTION PLANS. ANY MODIFICATIONS NECESSARY DUE TO CONFLICTS, OMISSIONS, OR CHANGED CONDITIONS WILL BE ENTIRELY THE DEVELOPER'S RESPONSIBILITY TO RECTIFY.
- CONTRACTOR SHALL SCHEDULE A PRE-CONSTRUCTION MEETING WITH EL PASO COUNTY PLANNING AND COMMUNITY DEVELOPMENT (PCD) - INSPECTIONS, PRIOR TO STARTING CONSTRUCTION.
- IT IS THE CONTRACTOR'S RESPONSIBILITY TO UNDERSTAND THE REQUIREMENTS OF ALL JURISDICTIONAL AGENCIES AND TO OBTAIN ALL REQUIRED PERMITS, INCLUDING BUT NOT LIMITED TO EL PASO COUNTY EROSION AND STORMWATER QUALITY CONTROL PERMIT (ESQCP), REGIONAL BUILDING FLOODPLAIN DEVELOPMENT PERMIT, U.S. ARMY CORPS OF ENGINEERS-ISSUED 401 AND/OR 404 PERMITS, AND COUNTY AND STATE FUGITIVE DUST PERMITS.
- CONTRACTOR SHALL NOT DEVIATE FROM THE PLANS WITHOUT FIRST OBTAINING WRITTEN APPROVAL FROM THE DESIGN ENGINEER AND PCD. CONTRACTOR SHALL NOTIFY THE DESIGN ENGINEER IMMEDIATELY UPON DISCOVERY OF ANY ERRORS OR INCONSISTENCIES.
- ALL STORM DRAIN PIPE SHALL BE CLASS III RCP UNLESS OTHERWISE NOTED AND APPROVED BY PCD.
- CONTRACTOR SHALL COORDINATE GEOTECHNICAL TESTING PER ECM STANDARDS. PAVEMENT DESIGN SHALL BE APPROVED BY EL PASO COUNTY PCD PRIOR TO PLACEMENT OF CURB AND GUTTER AND PAVEMENT.
- ALL CONSTRUCTION TRAFFIC MUST ENTER/EXIT THE SITE AT APPROVED CONSTRUCTION ACCESS POINTS.
- SIGHT VISIBILITY TRIANGLES AS IDENTIFIED IN THE PLANS SHALL BE PROVIDED AT ALL INTERSECTIONS. OBSTRUCTIONS GREATER THAN 18 INCHES ABOVE FLOWLINE ARE NOT ALLOWED WITHIN SIGHT TRIANGLES.
- SIGNING AND STRIPING SHALL COMPLY WITH EL PASO COUNTY PCD AND MUTCD CRITERIA. [IF APPLICABLE, ADDITIONAL SIGNING AND STRIPING NOTES WILL BE PROVIDED.]
- CONTRACTOR SHALL OBTAIN ANY PERMITS REQUIRED BY EL PASO COUNTY DPW, INCLUDING WORK WITHIN THE RIGHT-OF-WAY AND SPECIAL TRANSPORT PERMITS.
- THE LIMITS OF CONSTRUCTION SHALL REMAIN WITHIN THE PROPERTY LINE UNLESS OTHERWISE NOTED. THE OWNER/DEVELOPER SHALL OBTAIN WRITTEN PERMISSION AND EASEMENTS, WHERE REQUIRED, FROM ADJOINING PROPERTY OWNER(S) PRIOR TO ANY OFF-SITE DISTURBANCE, GRADING, OR CONSTRUCTION.



UNTIL SUCH TIME AS THESE DRAWINGS ARE APPROVED BY THE APPROPRIATE REVIEWING AGENCIES, OR ENGINEERING APPROVES THEIR USE, THESE DRAWINGS ARE DESIGNATED BY WRITTEN AUTHORIZATION.

PREPARED FOR
SR LAND, LLC
 20 BOULDER CRESCENT
 SUITE 201
 COLORADO SPRINGS, CO 80903
 JAMES F. MORLEY
 (719) 471-1742

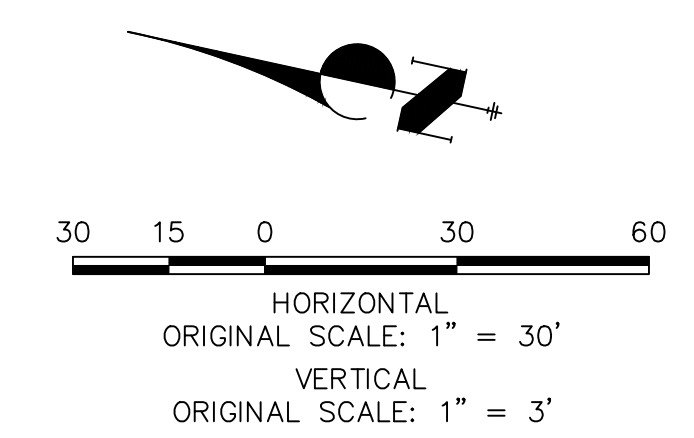
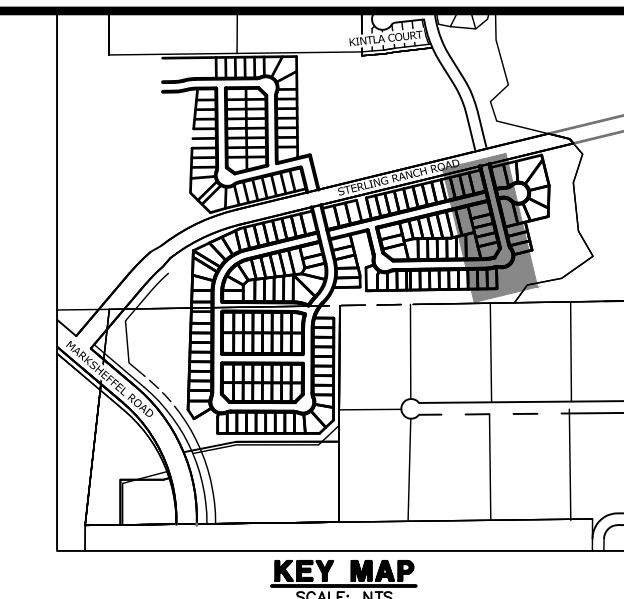
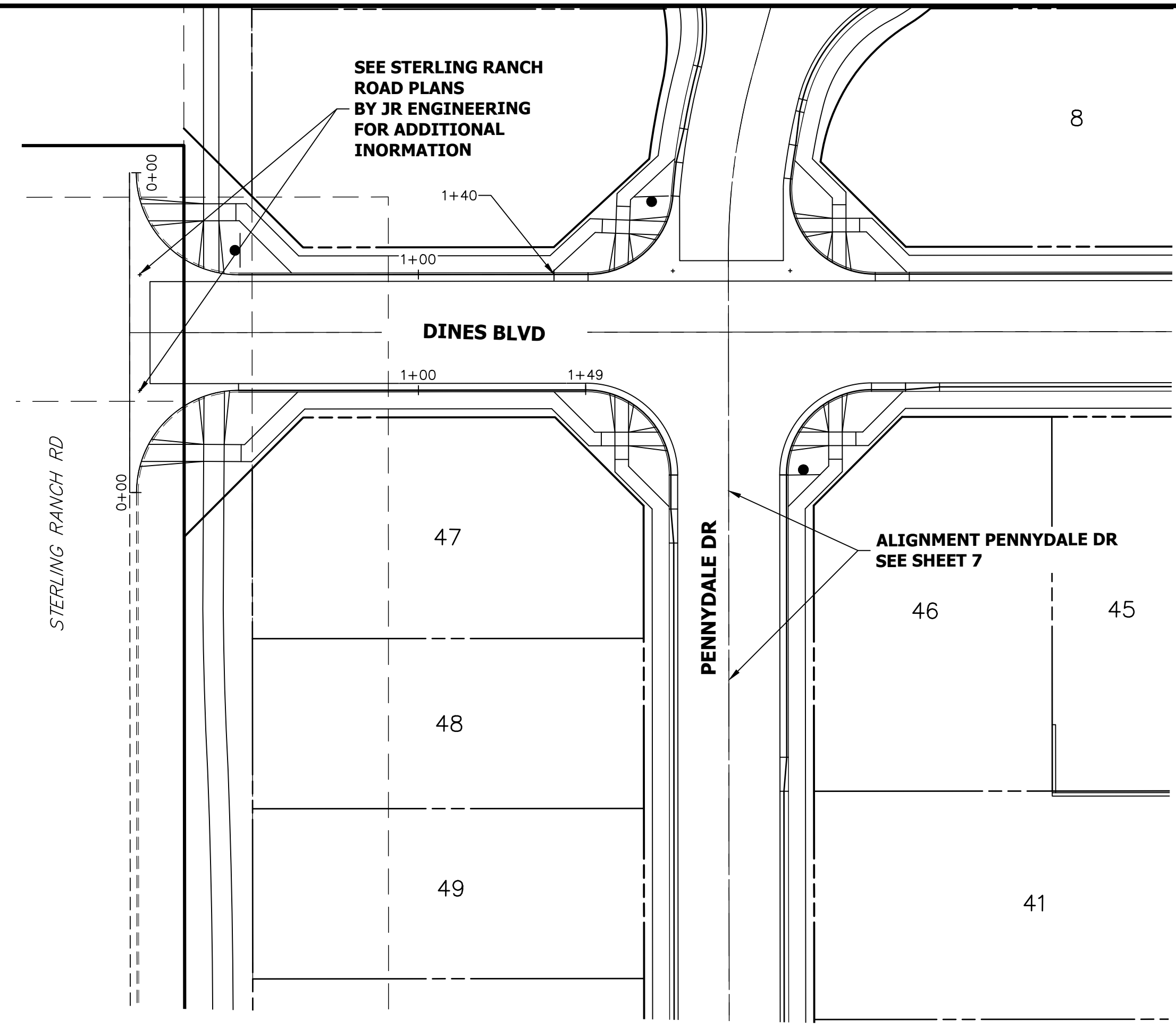
J.R. ENGINEERING
 A Westman Company
 Central 303-740-9888 • Colorado Springs 719-583-2583
 Fort Collins 970-491-9888 • www.jrengineering.com

BY	DATE	No.	REVISION

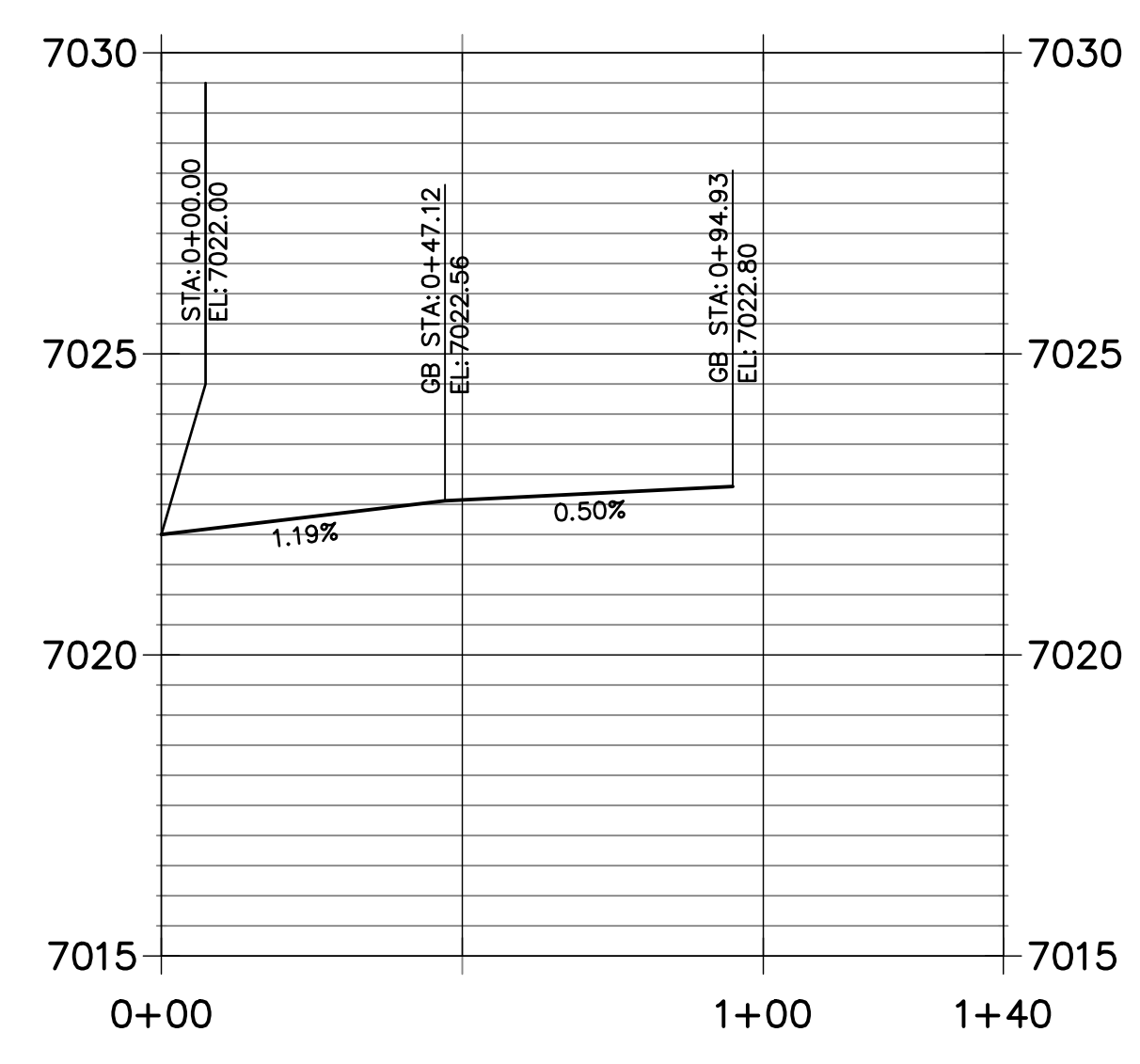
H-SCALE	N/A	V-SCALE	N/A	DATE	DESIGNED BY	DRAWN BY	CHECKED BY
				6/17/21	AJH	CGV	

STERLING RANCH
 FILING 3
 GENERAL NOTES

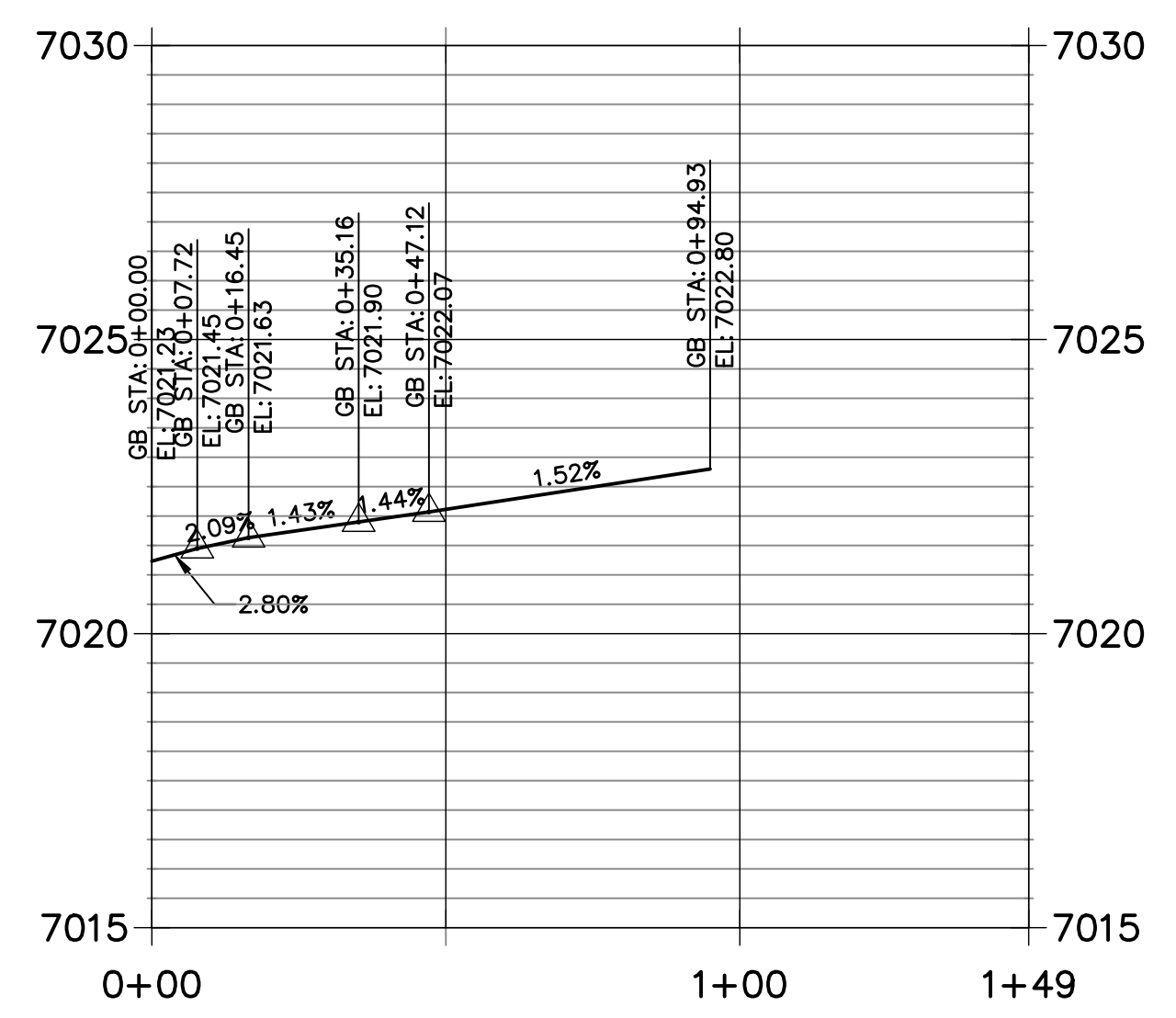




**EAST FL DINES PROFILE
STA 0+00.00 TO 1+39.87**



**WEST FL DINES PROFILE
STA 0+00.00 TO 1+49.12**

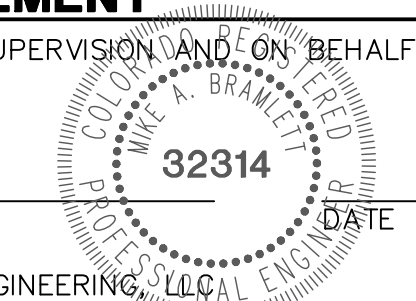


Know what's below.
Call before you dig.

ENGINEER'S STATEMENT

PREPARED UNDER MY DIRECT SUPERVISION AND ON BEHALF OF JR ENGINEERING

MIKE A. BRAMLETT, P.E.
COLORADO P.E. 32314



FILE NO. SF-21-XXX

UNTIL SUCH TIME AS THESE DRAWINGS ARE APPROVED BY THE APPROPRIATE REVIEWING AGENCIES, JR ENGINEERING APPROVES THEIR USES DESIGNATED BY WRITTEN AUTHORIZATION.

PREPARED FOR
SR LAND, LLC
20 BOULDER CRESCENT
SUITE 201
COLORADO SPRINGS, CO 80903
JAMES F. MORLEY
(719) 471-1742

J.R. ENGINEERING
A Westman Company
Central 303-740-9888 • Colorado Springs 719-583-2583
Fort Collins 970-491-9888 • www.jrengineering.com

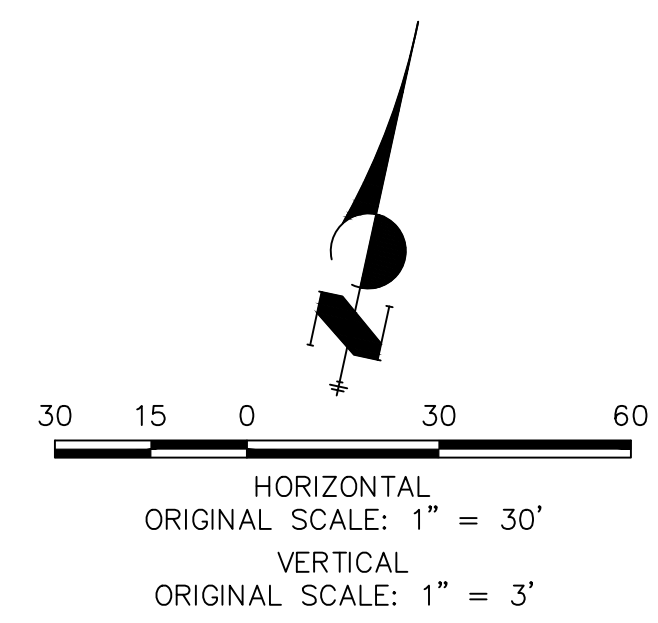
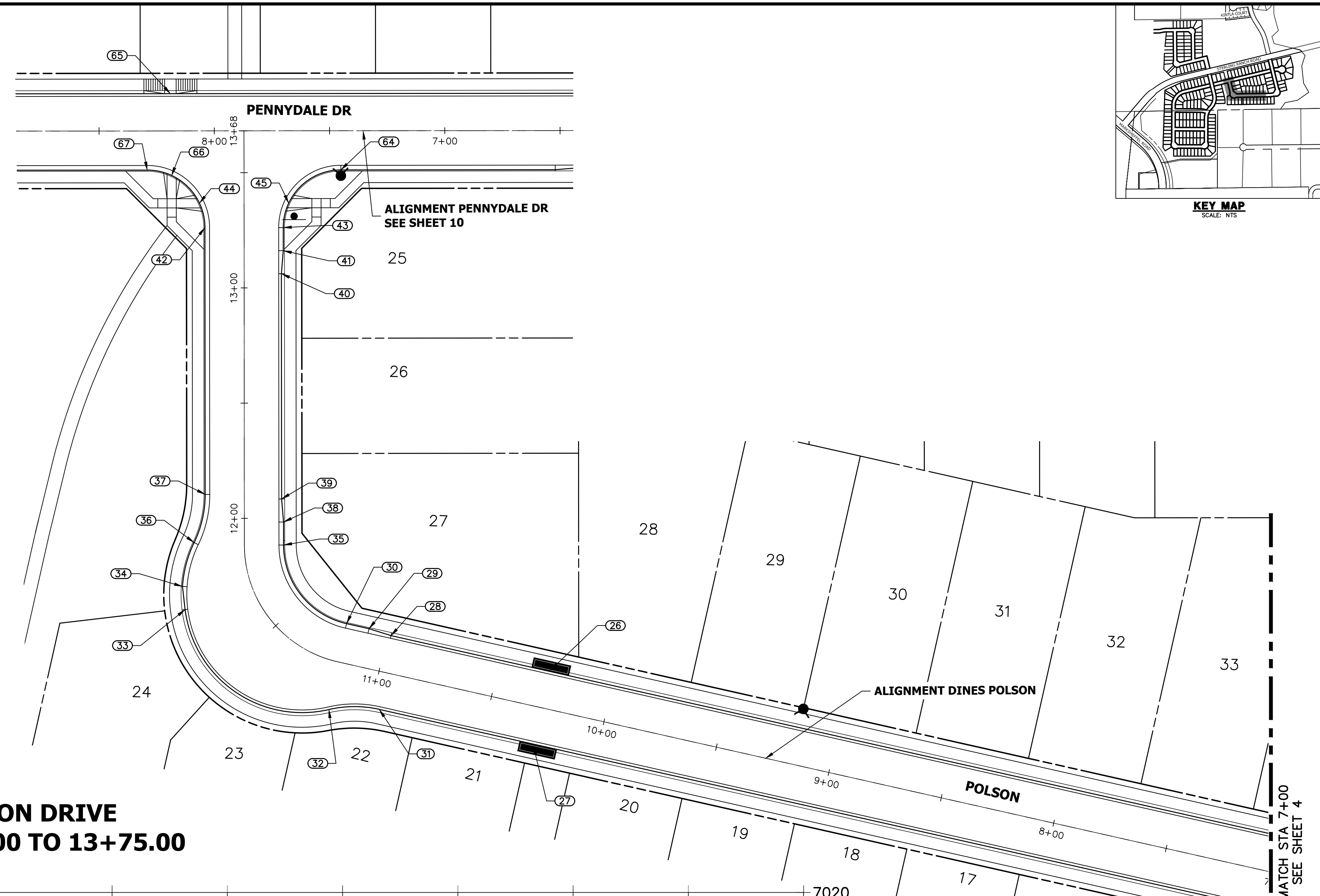
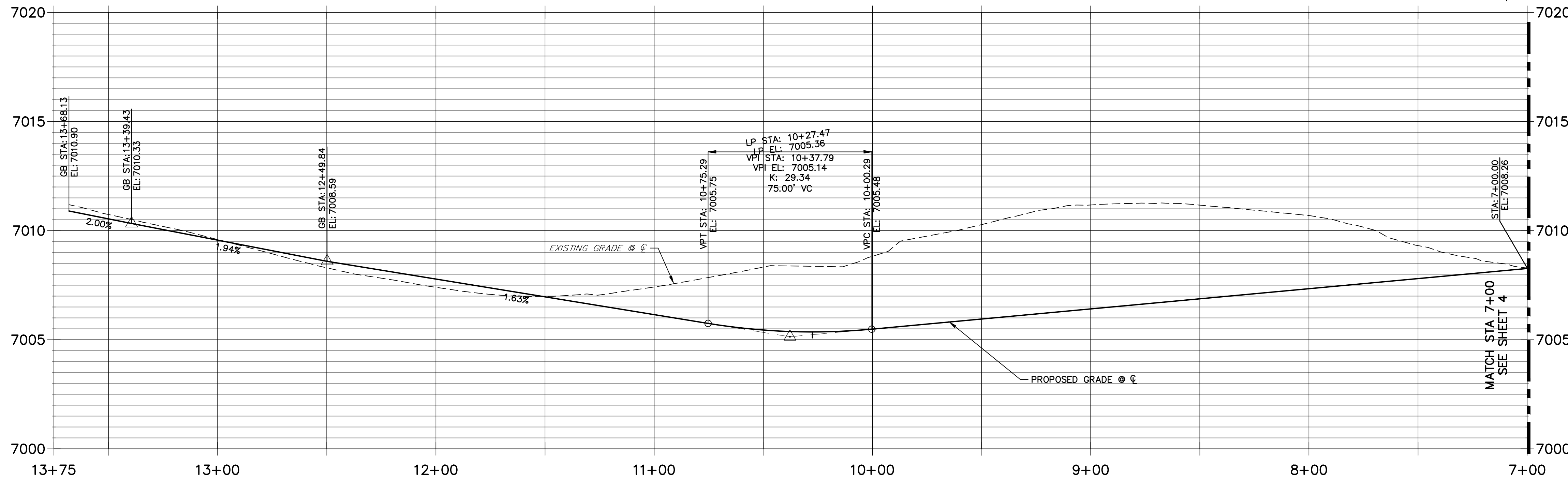
BY	DATE	No.	REVISION

H-SCALE 1"=30'	V-SCALE 1"=3'	DATE 6/17/21	DESIGNED BY JRM	DRAWN BY JRM	CHECKED BY
-------------------	------------------	-----------------	--------------------	-----------------	------------

STERLING RANCH
FILING 3
STREET IMPROVEMENT PLAN

POINT TABULATION					
POINT NUMBER	STATION	OFFSET	ALIGNMENT	ELEVATION	DESCRIPTION
26	10+27.53	16.83' (RT)	DINES POLSON	7005.36	LOW POINT
27	10+27.51	16.99' (LT)	DINES POLSON	7005.45	LOW POINT
28	10+98.31	16.17' (RT)	DINES POLSON	7006.01	CURB TRANSITION
29	11+08.31	17.00' (RT)	DINES POLSON	7005.82	CURB TRANSITION
30	11+18.31	17.00' (RT)	DINES POLSON	7005.98	PCR
31	10+96.29	16.17' (LT)	DINES POLSON	7005.69	PCR
32	11+17.57	21.05' (LT)	DINES POLSON	7005.95	PCR
33	11+70.46	30.64' (LT)	DINES POLSON	7006.95	CURB TRANSITION
34	11+76.79	28.89' (LT)	DINES POLSON	7007.07	CURB TRANSITION
35	11+88.41	17.00' (RT)	DINES POLSON	7007.12	PCR
36	11+89.51	21.80' (LT)	DINES POLSON	7007.30	PCR
37	12+10.43	17.00' (LT)	DINES POLSON	7007.57	PCR
38	11+98.41	17.00' (RT)	DINES POLSON	7007.29	CURB TRANSITION
39	12+08.41	16.17' (RT)	DINES POLSON	7007.52	CURB TRANSITION
40	13+06.13	16.25' (RT)	DINES POLSON	7009.33	CURB TRANSITION
41	13+16.13	17.00' (RT)	DINES POLSON	7009.44	CURB TRANSITION
42	13+26.13	17.00' (LT)	DINES POLSON	7009.41	PCR
43	13+26.13	17.00' (RT)	DINES POLSON	7009.66	PCR
44	13+36.72	19.36' (LT)	DINES POLSON	7009.55	HC RAMP MID PT
45	13+36.72	19.36' (RT)	DINES POLSON	7009.88	HC RAMP MID PT

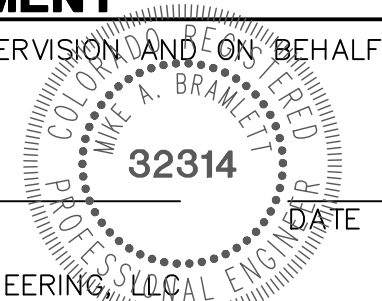
**POLSON DRIVE
STA 7+00.00 TO 13+75.00**



ENGINEER'S STATEMENT

PREPARED UNDER MY DIRECT SUPERVISION AND ON BEHALF OF JR ENGINEERING

MIKE A. BRAMLETT, P.E.
COLORADO P.E. 32314
FOR AND ON BEHALF OF JR ENGINEERING



FILE NO. SF-21-XXX

UNTIL SUCH TIME AS THESE DRAWINGS ARE APPROVED BY THE APPROPRIATE REVIEWING AGENCIES, JR ENGINEERING APPROVES THEIR USE FOR PURPOSES DESIGNATED BY WRITTEN AUTHORIZATION.

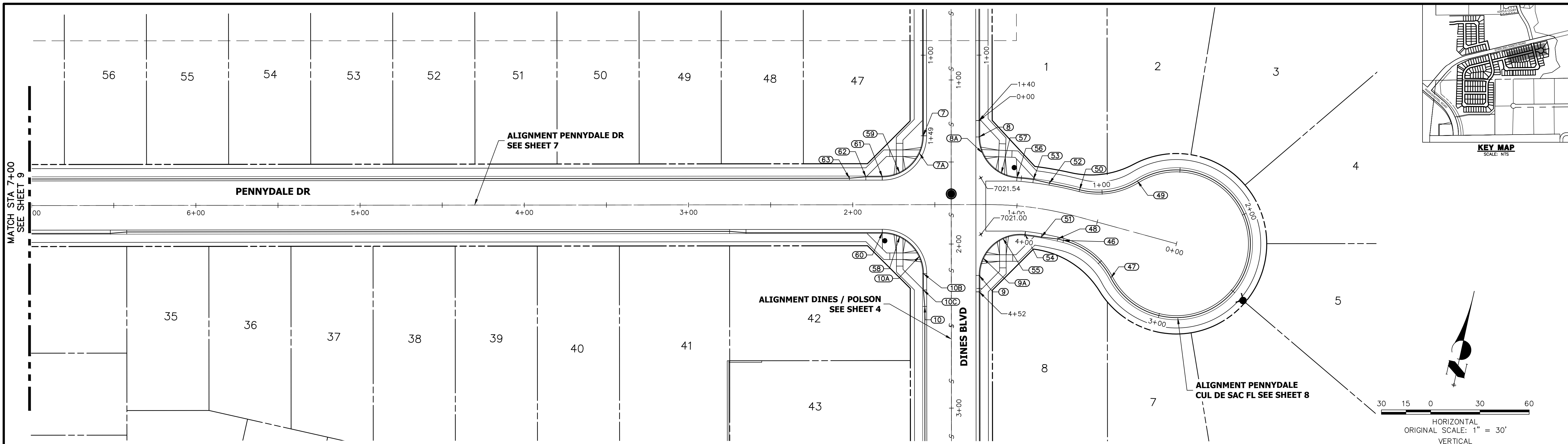
PREPARED FOR
SR LAND, LLC
20 BOULDER CRESCENT
SUITE 201
COLORADO SPRINGS, CO 80903
JAMES F. MORLEY
(719) 471-1742

J.R. ENGINEERING
A Westman Company
Central 303-740-9888 • Colorado Springs 719-588-2583
Fort Collins 970-491-9888 • www.jrengineering.com

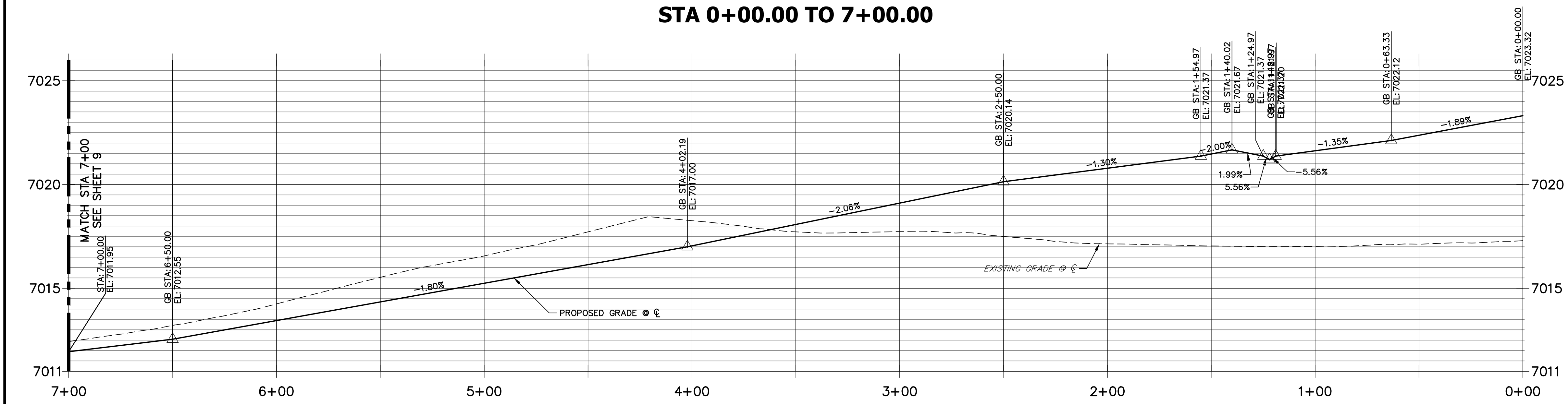
No.	REVISION	BY	DATE

H-SCALE	1"=30'
V-SCALE	1"=3'
DATE	6/17/21
DESIGNED BY	JRM
DRAWN BY	CJD
CHECKED BY	

STERLING RANCH
FILING 3
STREET IMPROVEMENT PLAN



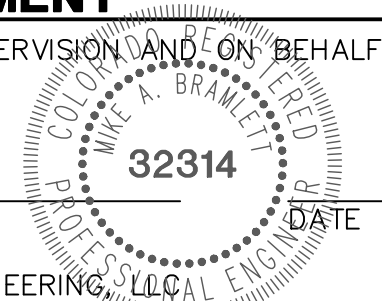
**PENNYDALE DRIVE
STA 0+00.00 TO 7+00.00**



POINT TABULATION					
POINT NUMBER	STATION	OFFSET	ALIGNMENT	ELEVATION	DESCRIPTION
46	0+67.17	16.17' (LT)	PENNYDALE-MOORE	7021.56	PCR
47	0+33.00	30.60' (LT)	PENNYDALE-MOORE	7022.02	PCR
48	0+71.15	16.17' (LT)	PENNYDALE-MOORE	7021.51	CURB TRANSITION
49	0+33.02	30.58' (RT)	PENNYDALE-MOORE	7022.57	PCR
50	0+65.40	16.17' (RT)	PENNYDALE-MOORE	7022.30	PCR
51	0+82.03	17.00' (LT)	PENNYDALE-MOORE	7021.36	CURB TRANSITION
52	0+82.83	16.09' (RT)	PENNYDALE-MOORE	7022.13	CURB TRANSITION
53	0+92.08	17.00' (RT)	PENNYDALE-MOORE	7022.03	CURB TRANSITION
54	0+92.91	17.00' (LT)	PENNYDALE-MOORE	7021.22	PCR
55	1+07.66	20.31' (LT)	PENNYDALE-MOORE	7021.00	HC RAMP MID PT
56	1+01.30	17.00' (RT)	PENNYDALE-MOORE	7021.93	PCR
57	1+10.15	19.17' (RT)	PENNYDALE-MOORE	7021.94	HC RAMP MID PT
58	1+71.42	19.36' (LT)	PENNYDALE-MOORE	7020.83	HC RAMP MID PT
59	1+71.42	19.36' (RT)	PENNYDALE-MOORE	7021.01	HC RAMP MID PT
60	1+82.02	17.00' (LT)	PENNYDALE-MOORE	7020.66	PCR
61	1+82.02	17.00' (RT)	PENNYDALE-MOORE	7020.73	PCR
62	1+92.02	17.00' (RT)	PENNYDALE-MOORE	7020.57	CURB TRANSITION
63	2+02.02	16.17' (RT)	PENNYDALE-MOORE	7020.36	CURB TRANSITION



ENGINEER'S STATEMENT
 PREPARED UNDER MY DIRECT SUPERVISION AND ON BEHALF OF JR ENGINEERING



MIKE A. BRAMLETT, P.E.
 COLORADO P.E. 32314
 FOR AND ON BEHALF OF JR ENGINEERING

FILE NO. SF-21-XXX

UNTIL SUCH TIME AS THESE DRAWINGS ARE APPROVED BY THE APPROPRIATE REVIEWING AGENCIES, JR ENGINEERING APPROVES THEIR USE DESIGNATED BY WRITTEN AUTHORIZATION.

PREPARED FOR
SR LAND, LLC
 20 BOULDER CRESCENT
 SUITE 201
 COLORADO SPRINGS, CO 80903
 JAMES F. MORLEY
 (719) 471-1742

J.R. ENGINEERING
 A Westman Company
 Centennial 300-740-9888 • Colorado Springs 719-588-2583
 Fort Collins 970-491-9888 • www.jrengineering.com

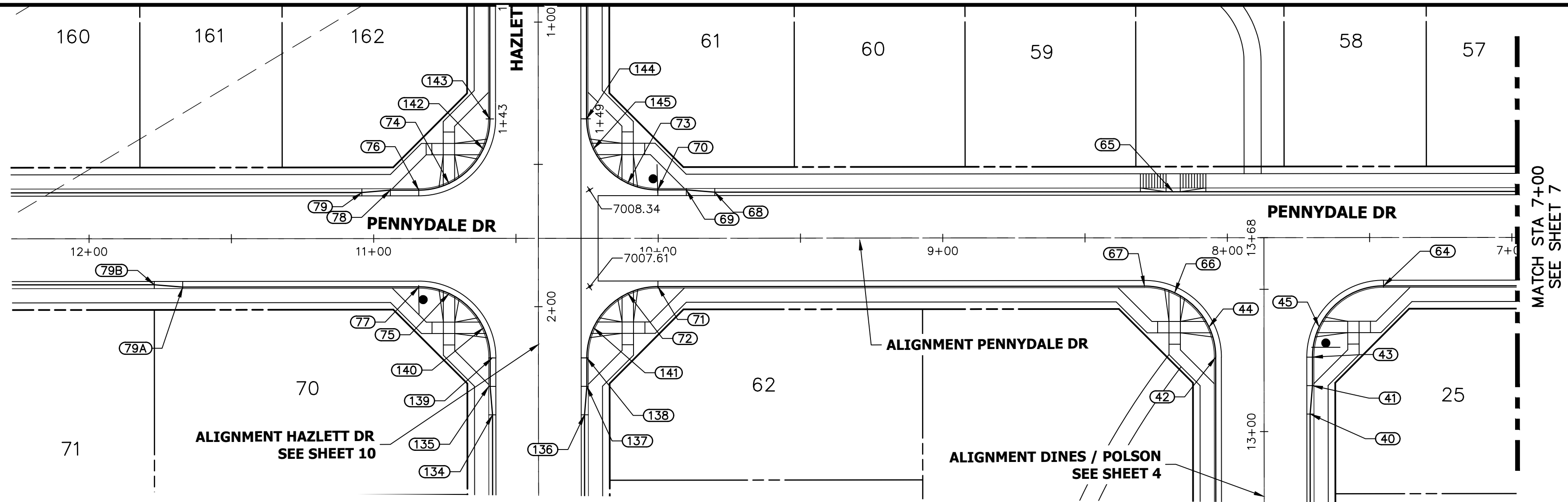
BY	DATE

No.	REVISION

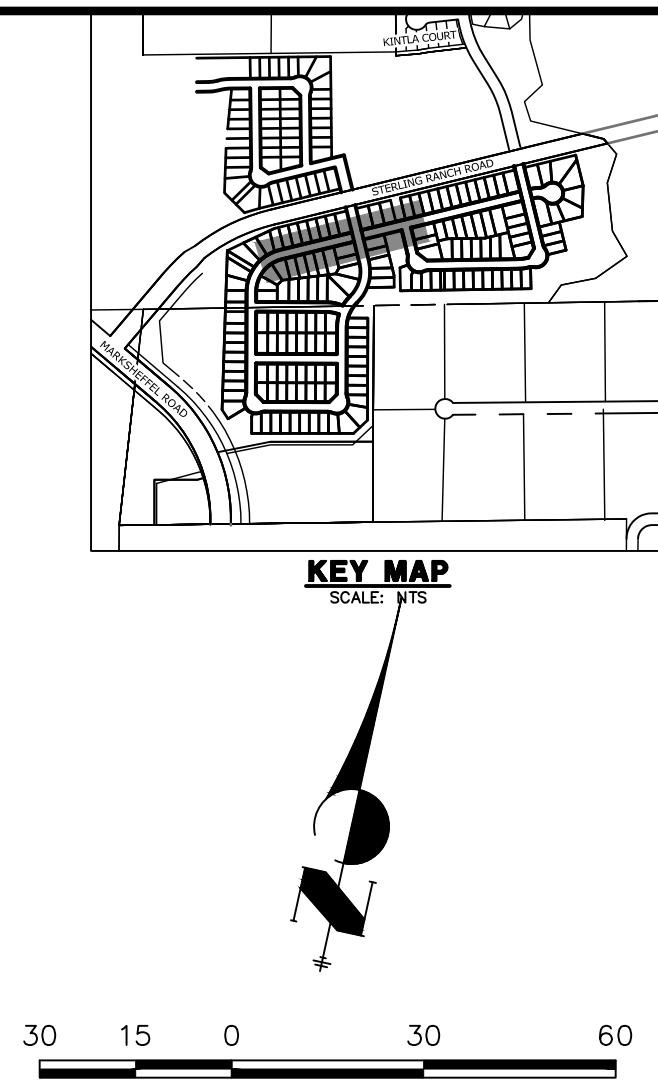
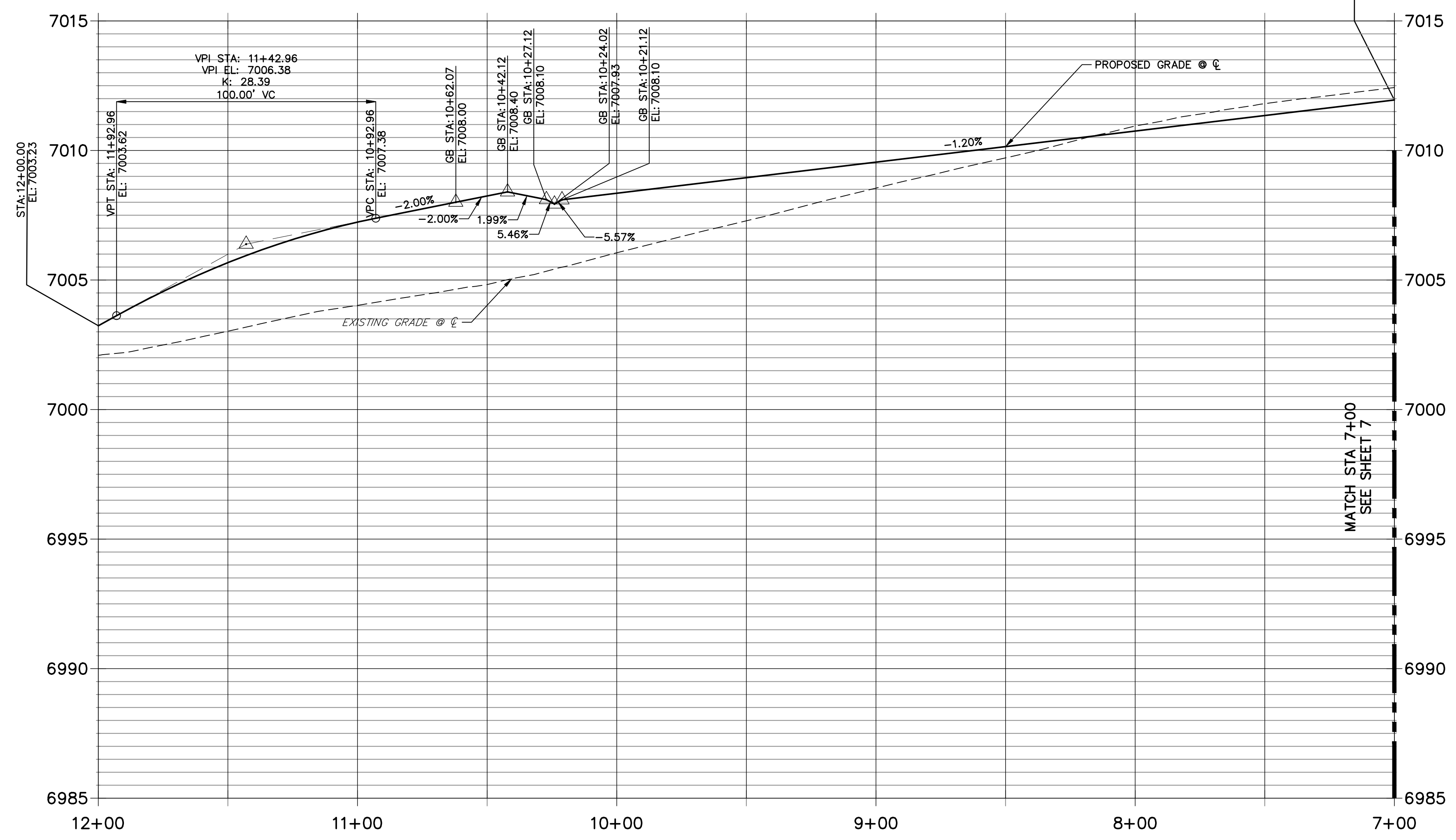
H-SCALE 1"=30'	V-SCALE 1"=3'	DATE 6/17/21	DESIGNED BY JRM	DRAWN BY JRM	CHECKED BY
-------------------	------------------	-----------------	--------------------	-----------------	------------

STERLING RANCH
 FILING 3
 STREET IMPROVEMENT PLAN

SHEET 7 OF 13
 JOB NO. 25188.00



**PENNYDALE DR
STA 7+00.00 TO 12+00.00**



HORIZONTAL ORIGINAL SCALE: 1" = 30'
VERTICAL ORIGINAL SCALE: 1" = 3'

POINT TABULATION					
POINT NUMBER	STATION	OFFSET	ALIGNMENT	ELEVATION	DESCRIPTION
64	7+45.12	17.00' (LT)	PENNYDALE-MOORE	7010.45	PCR
65	8+19.02	16.17' (RT)	PENNYDALE-MOORE	7010.12	HC RAMP MID PT
66	8+18.52	19.36' (LT)	PENNYDALE-MOORE	7009.79	HC RAMP MID PT
67	8+29.12	17.00' (LT)	PENNYDALE-MOORE	7009.94	PCR
68	9+80.12	16.17' (RT)	PENNYDALE-MOORE	7008.19	CURB TRANSITION
69	9+90.12	17.00' (RT)	PENNYDALE-MOORE	7008.30	CURB TRANSITION
70	10+00.12	17.00' (RT)	PENNYDALE-MOORE	7008.41	PCR
71	10+00.12	17.00' (LT)	PENNYDALE-MOORE	7007.78	PCR
72	10+10.71	19.36' (LT)	PENNYDALE-MOORE	7007.60	HC RAMP MID PT
73	10+10.71	19.36' (RT)	PENNYDALE-MOORE	7008.53	HC RAMP MID PT
74	10+73.52	19.36' (RT)	PENNYDALE-MOORE	7007.75	HC RAMP MID PT
75	10+73.52	19.36' (LT)	PENNYDALE-MOORE	7007.26	HC RAMP MID PT
76	10+84.12	17.00' (RT)	PENNYDALE-MOORE	7007.44	PCR

POINT TABULATION					
POINT NUMBER	STATION	OFFSET	ALIGNMENT	ELEVATION	DESCRIPTION
77	10+84.12	17.00' (LT)	PENNYDALE-MOORE	7007.04	PCR
78	10+94.12	17.00' (RT)	PENNYDALE-MOORE	7007.04	CURB TRANSITION
79B	13+51.96	390.00' (LT)	DINES POLSON	7004.06	CURB TRANSITION
79A	13+51.13	380.00' (LT)	DINES POLSON	7004.47	CURB TRANSITION
79	11+04.12	16.17' (RT)	PENNYDALE-MOORE	7006.74	CURB TRANSITION

UNTIL SUCH TIME AS THESE DRAWINGS ARE APPROVED BY THE AGENCIES, JR ENGINEERING APPROVES THEIR USE DESIGNATED BY WRITTEN AUTHORIZATION.

PREPARED FOR
SR LAND, LLC
20 BOULDER CRESCENT
SUITE 201
COLORADO SPRINGS, CO 80903
JAMES F. MORLEY
(719) 471-1742

J.R. ENGINEERING
A Westman Company

Central 303-740-9888 • Colorado Springs 719-588-2583
Fort Collins 970-491-9888 • www.jrengineering.com

H-SCALE	V-SCALE	DATE	DESIGNED BY	DRAWN BY	CHECKED BY	No.	REVISION	BY	DATE



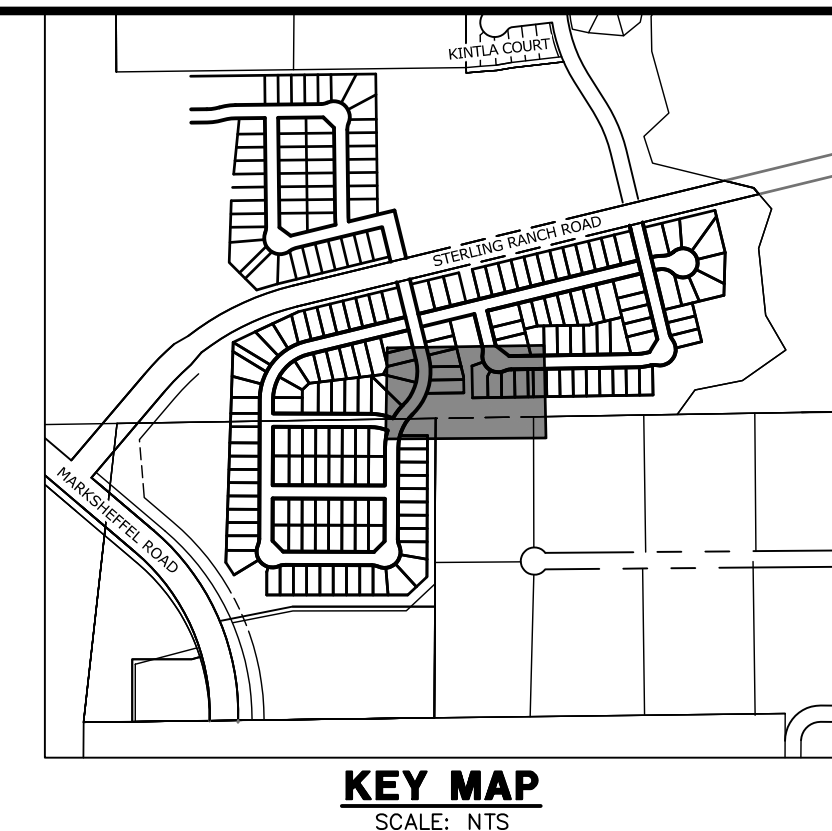
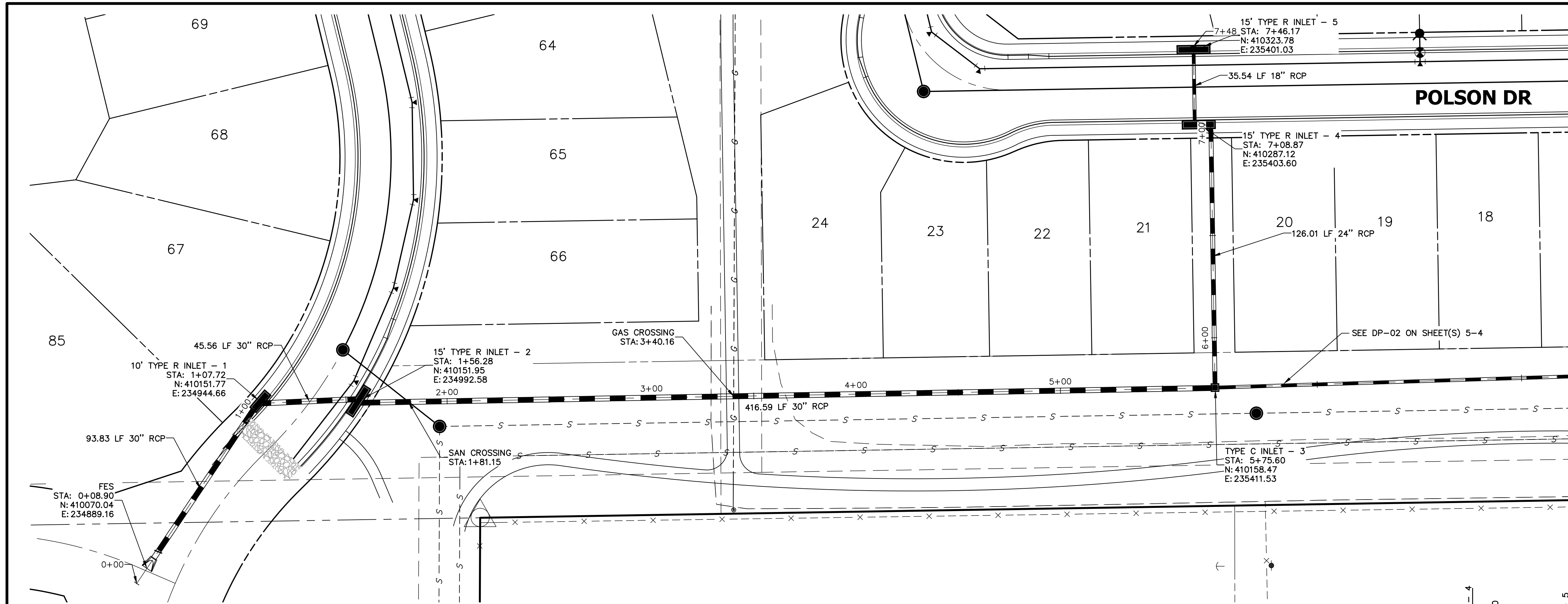
ENGINEER'S STATEMENT
PREPARED UNDER MY DIRECT SUPERVISION AND ON BEHALF OF JR ENGINEERING

MIKE A. BRAMLETT, P.E.
COLORADO P.E. 32314
FOR AND ON BEHALF OF JR ENGINEERING

FILE NO. SF-21-XXX

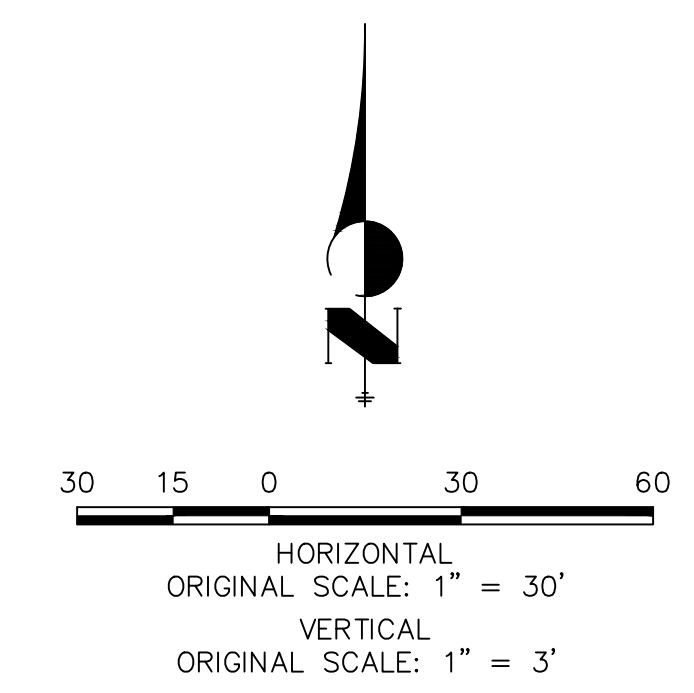
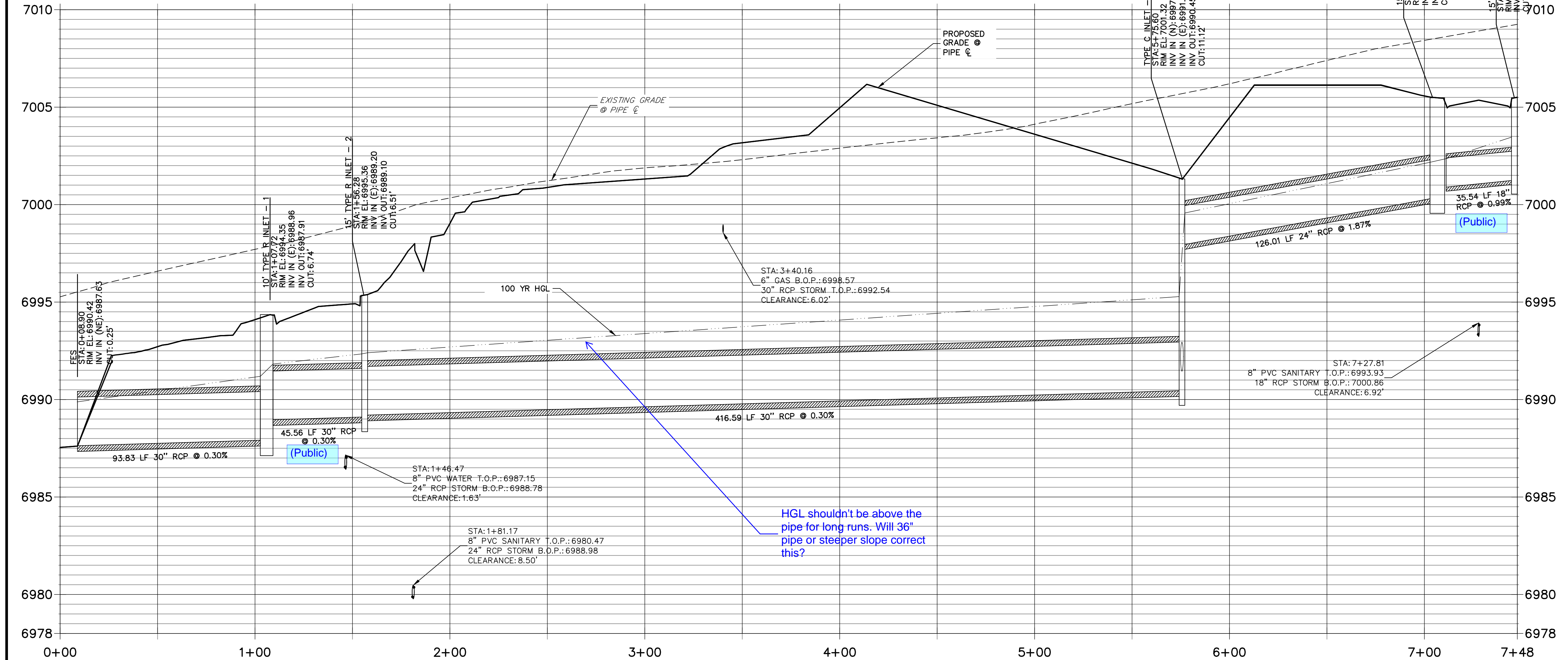
STERLING RANCH
FILING 3
STREET IMPROVEMENT PLAN

SHEET 9 OF 13
JOB NO. 25188.00



ENGINEER'S STATEMENT
 PREPARED UNDER MY DIRECT SUPERVISION AND ON BEHALF OF JR ENGINEERING
 MIKE A. BRAMLETT, P.E.
 COLORADO P.E. 32314
 FOR AND ON BEHALF OF JR ENGINEERING

DP-01 PROFILE
STA 0+00.00 TO 7+47.67
 SRMD-owned except where noted

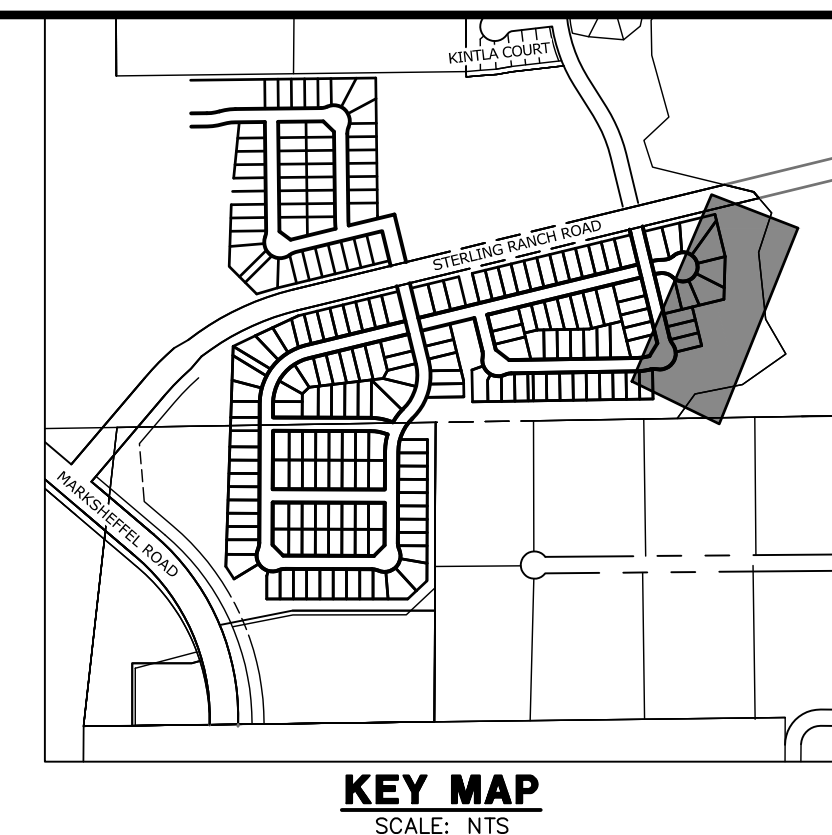
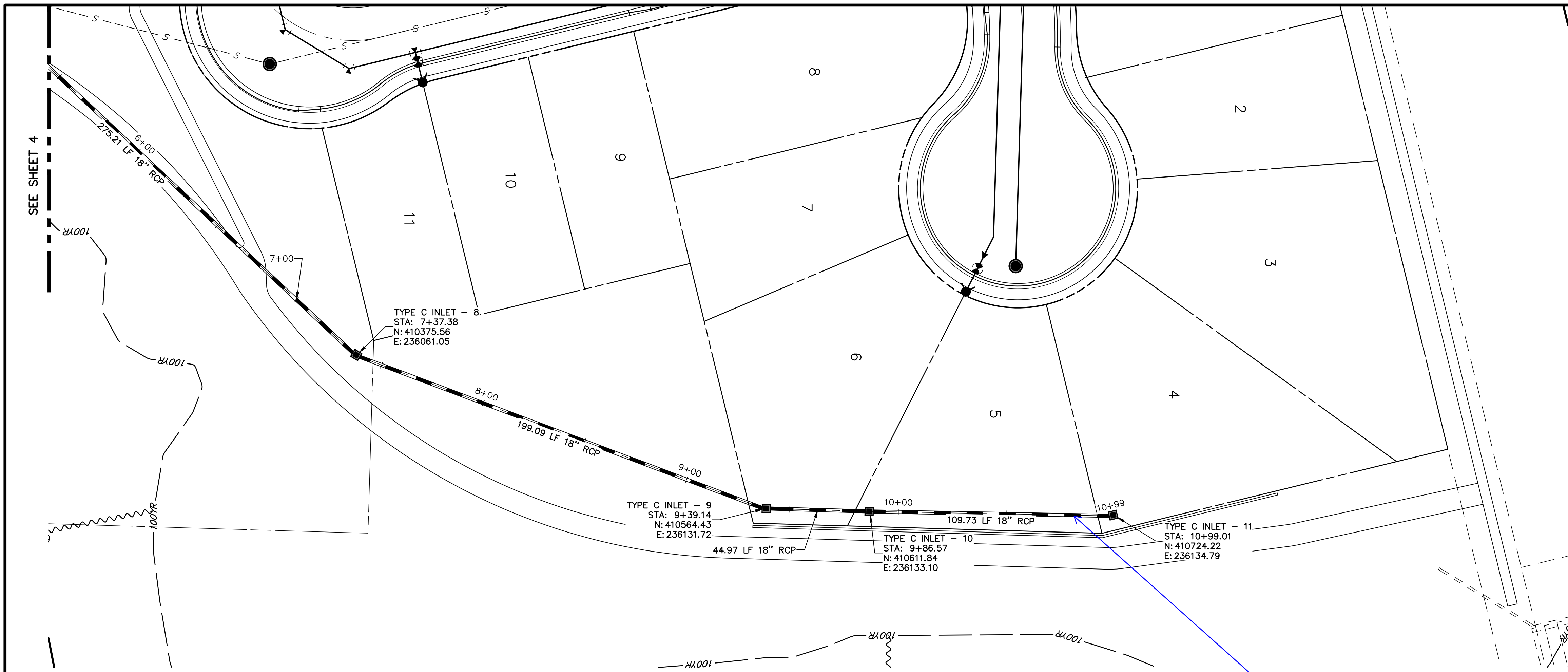


UNTIL SUCH TIME AS THESE DRAWINGS ARE APPROVED BY THE AGENCIES, OR ENGINEERING APPROVES THEIR USE, THESE DRAWINGS ARE DESIGNATED BY WRITTEN AUTHORIZATION.
 PREPARED FOR
SR LAND, LLC
 20 BOULDER CRESCENT
 SUITE 201
 COLORADO SPRINGS, CO 80903
 JAMES F. MORLEY
 (719) 471-1742

J.R. ENGINEERING
 A Westman Company
 Central 303-740-9888 • Colorado Springs 719-583-2583
 Fort Collins 970-491-9888 • www.jrengineering.com

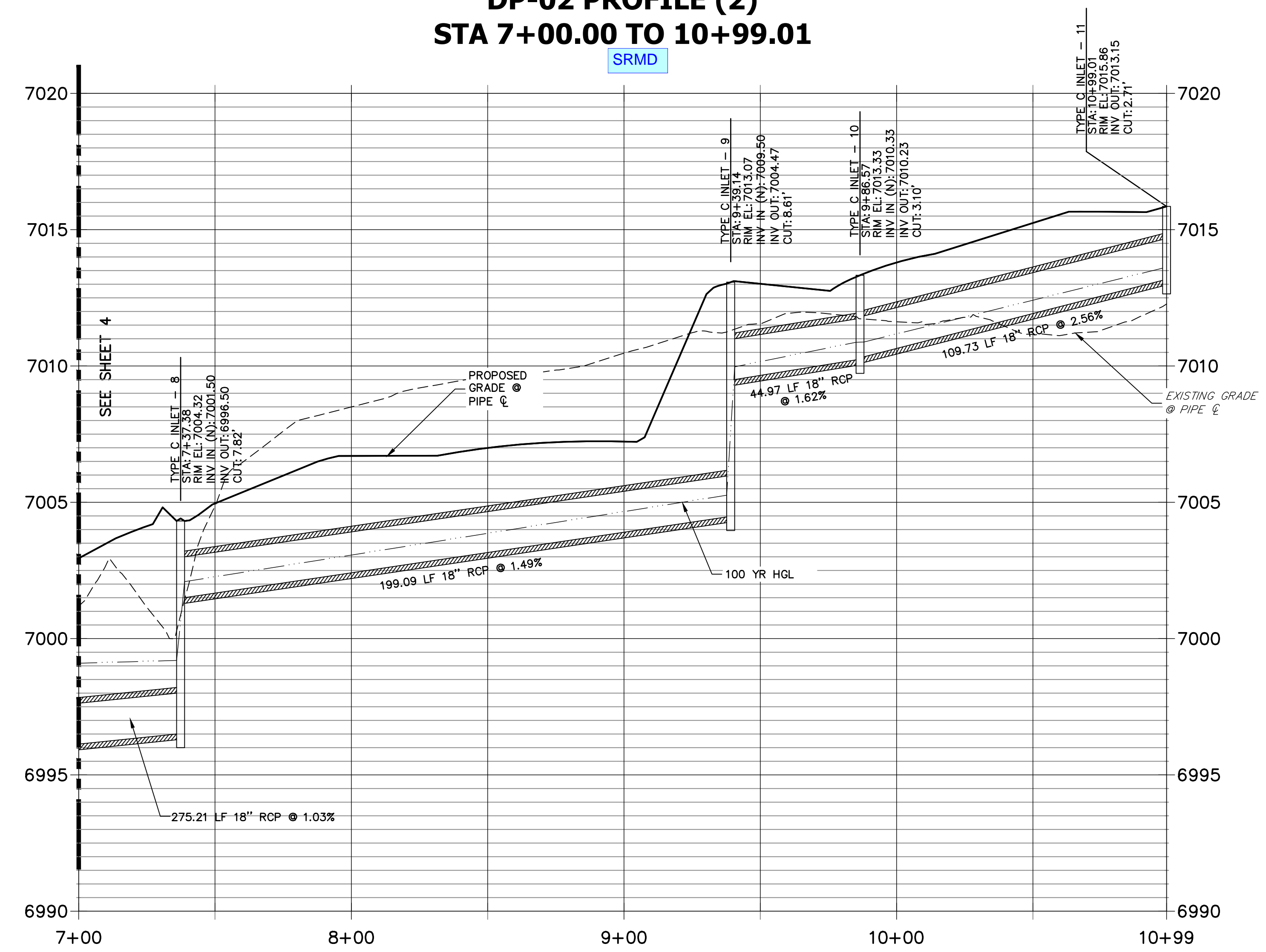
No.	REVISION	BY	DATE

STERLING RANCH FILING 3
 STORM SEWER PLAN
 SHEET 3 OF 7
 JOB NO. 25188.00

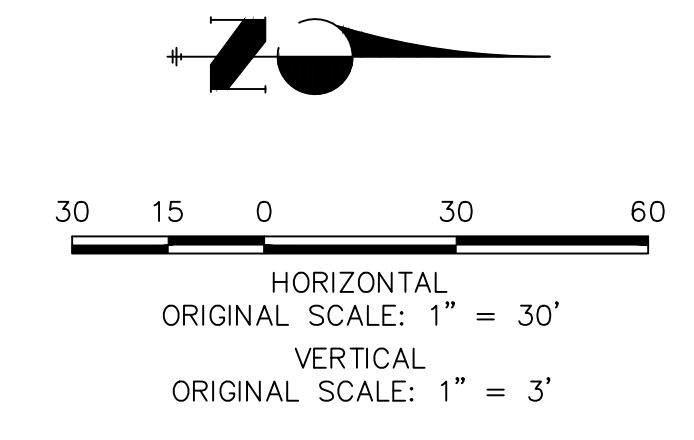


Know what's below.
Call before you dig.

DP-02 PROFILE (2)
STA 7+00.00 TO 10+99.01



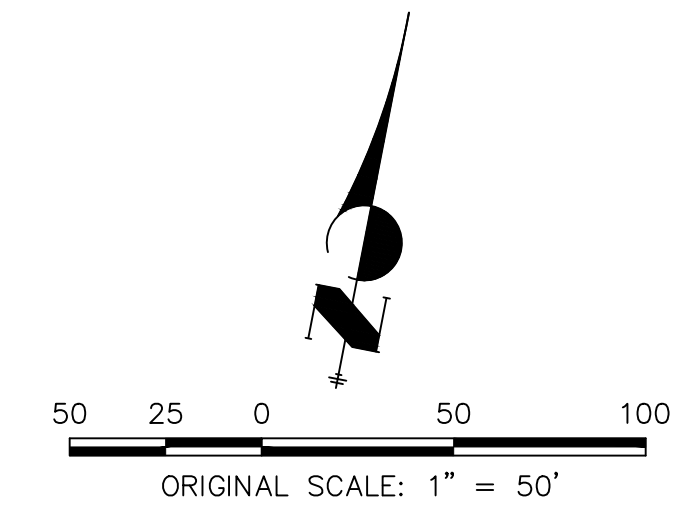
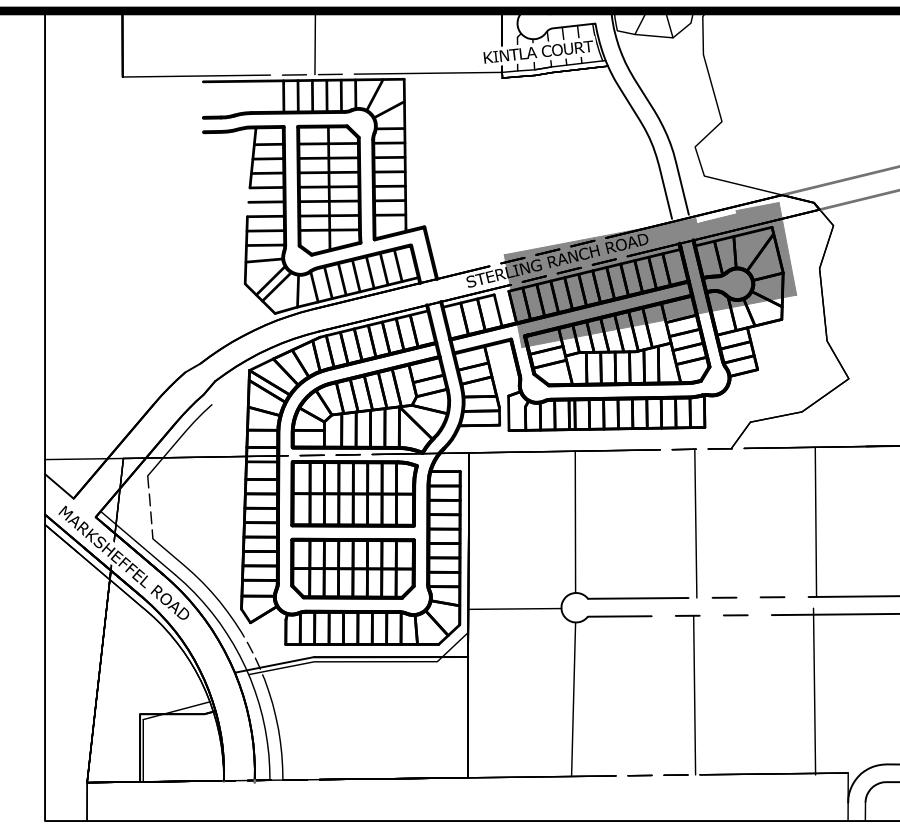
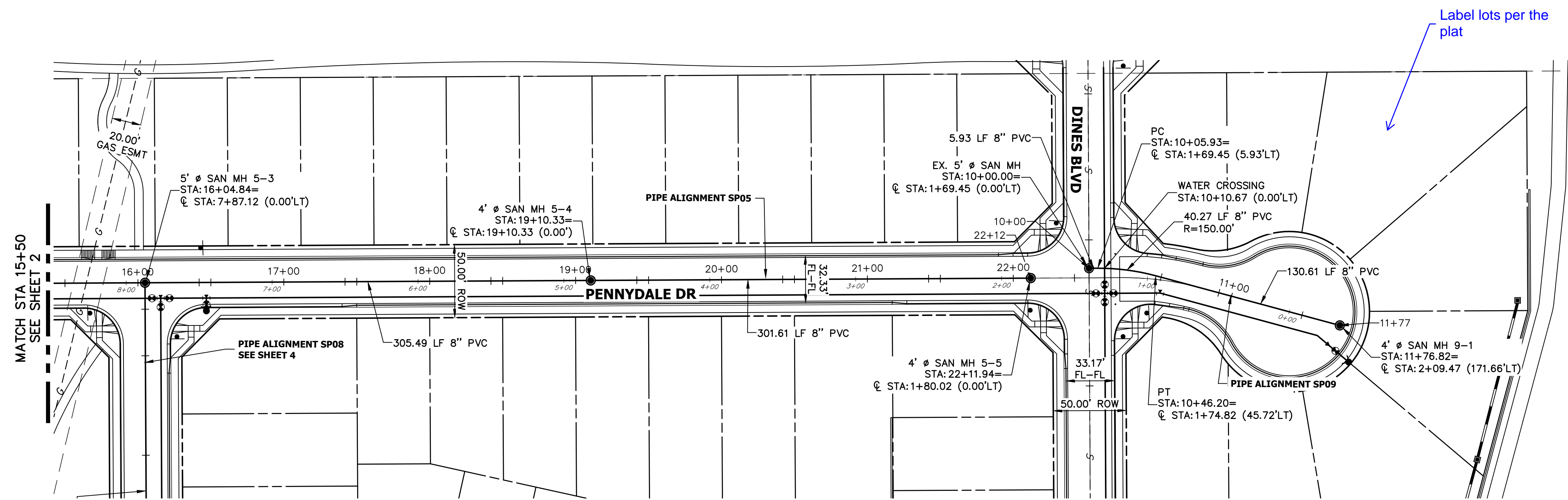
Show and label
the necessary
drainage
easement.



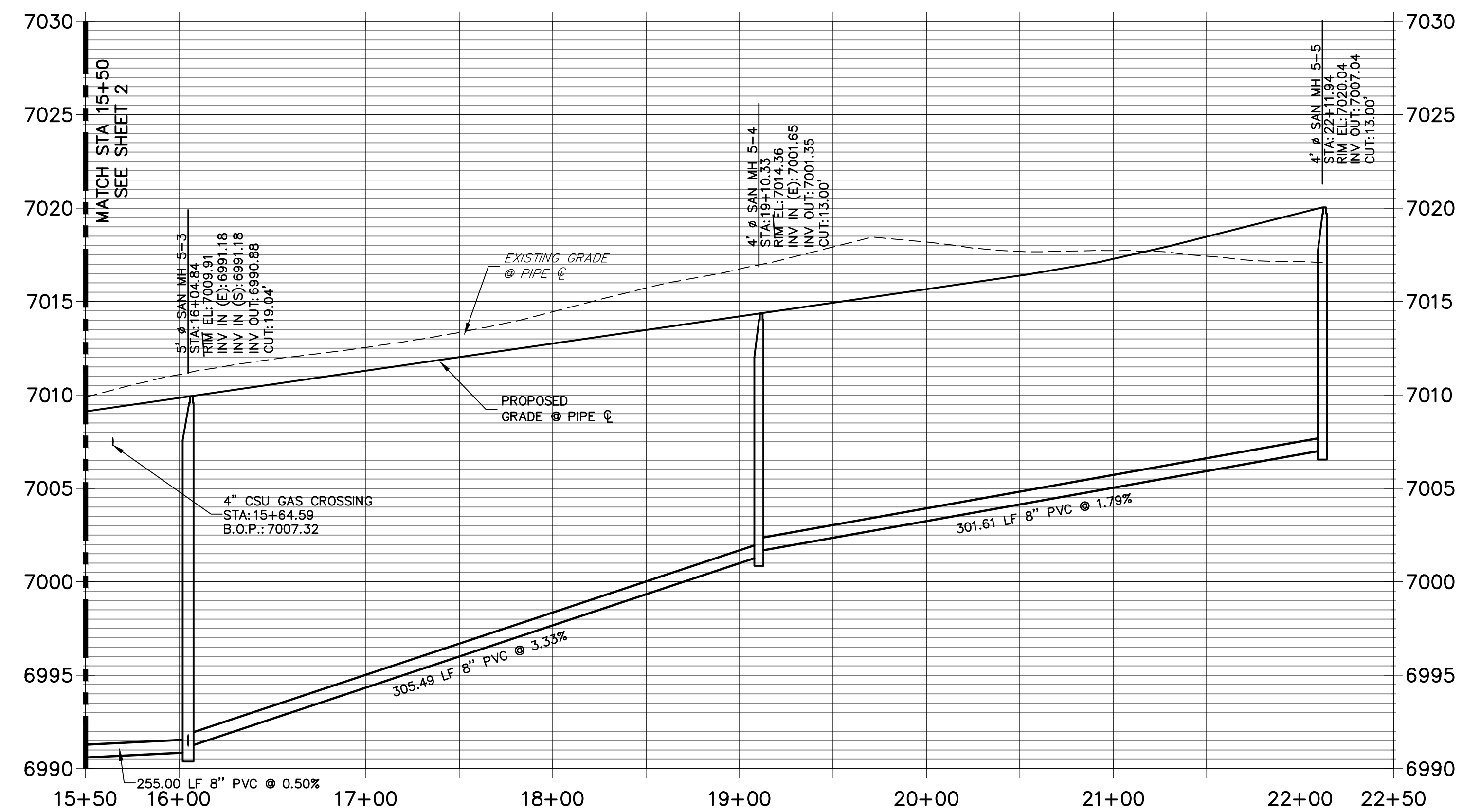
ENGINEER'S STATEMENT

PREPARED UNDER MY DIRECT SUPERVISION AND ON BEHALF OF JR ENGINEERING
 MIKE A. BRAMLETT, P.E.
 COLORADO P.E. 32314
 FOR AND ON BEHALF OF JR ENGINEERING, LOCAL ENGINEER
 DATE

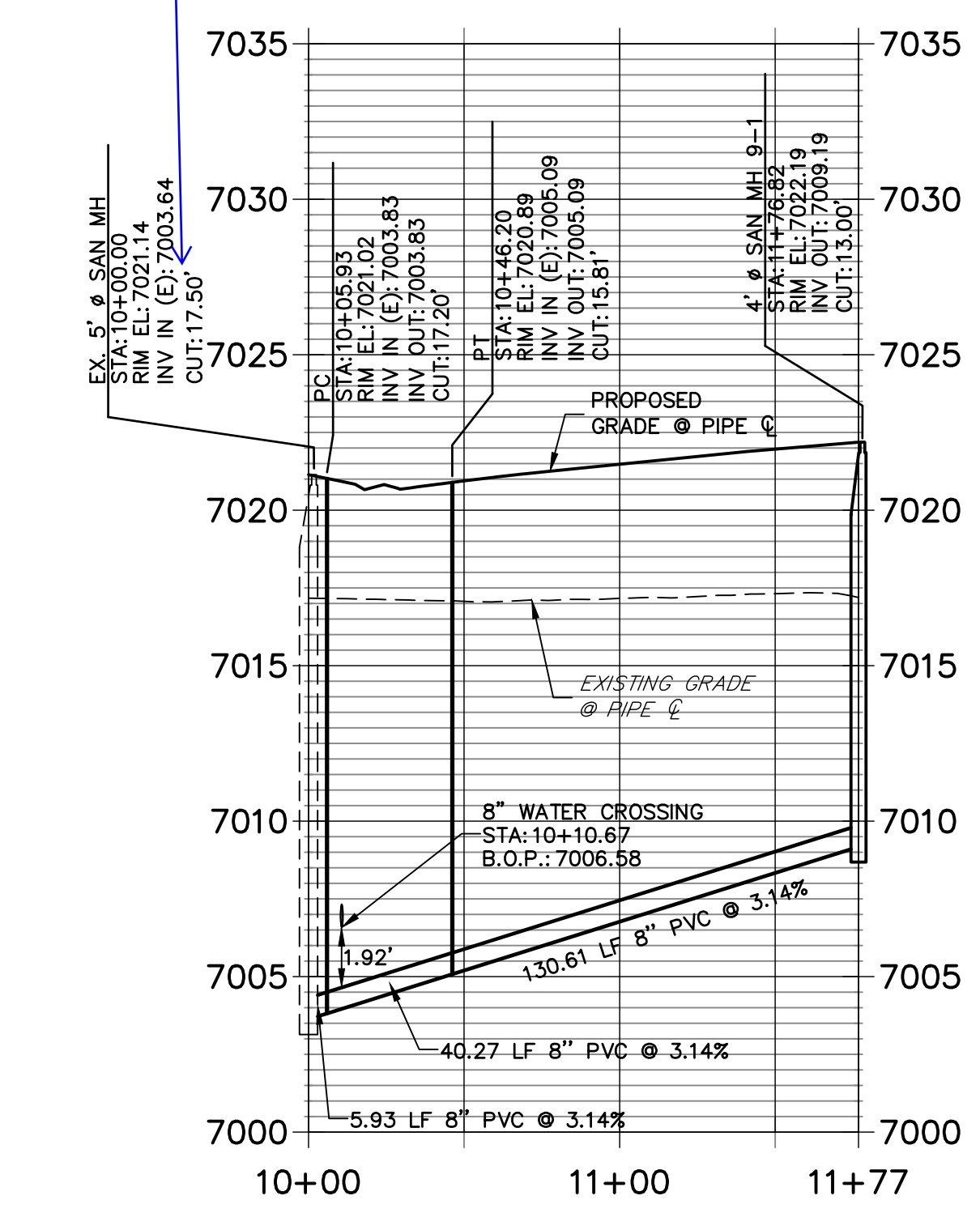
PREPARED FOR SR LAND, LLC 20 BOULDER CRESCENT SUITE 201 COLORADO SPRINGS, CO 80903 JAMES F. MORLEY (719) 471-1742	UNTIL SUCH TIME AS THESE DRAWINGS ARE APPROVED BY THE APPROPRIATE REVIEWING AGENCIES, JR ENGINEERING APPROVES THEIR USES DESIGNATED BY WRITTEN AUTHORIZATION.	
	J.R. ENGINEERING A Westman Company Centennial 303-740-9888 • Colorado Springs 719-583-2583 Fort Collins 970-491-9888 • www.jrengineering.com	BY: _____ DATE: _____
STERLING RANCH FILING 3 STORM SEWER PLAN	SHEET 5 OF 7 JOB NO. 25188.00	FILE NO. SF-21-XXX



**SP05 PROFILE (1)
STA 15+50.00 TO 22+50.00**

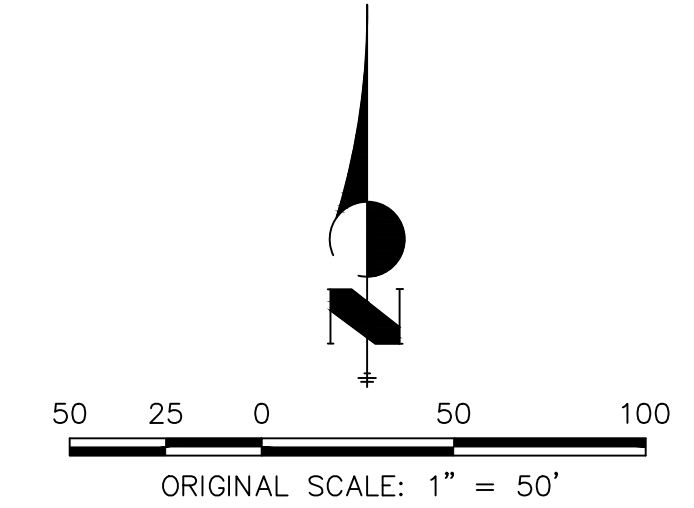
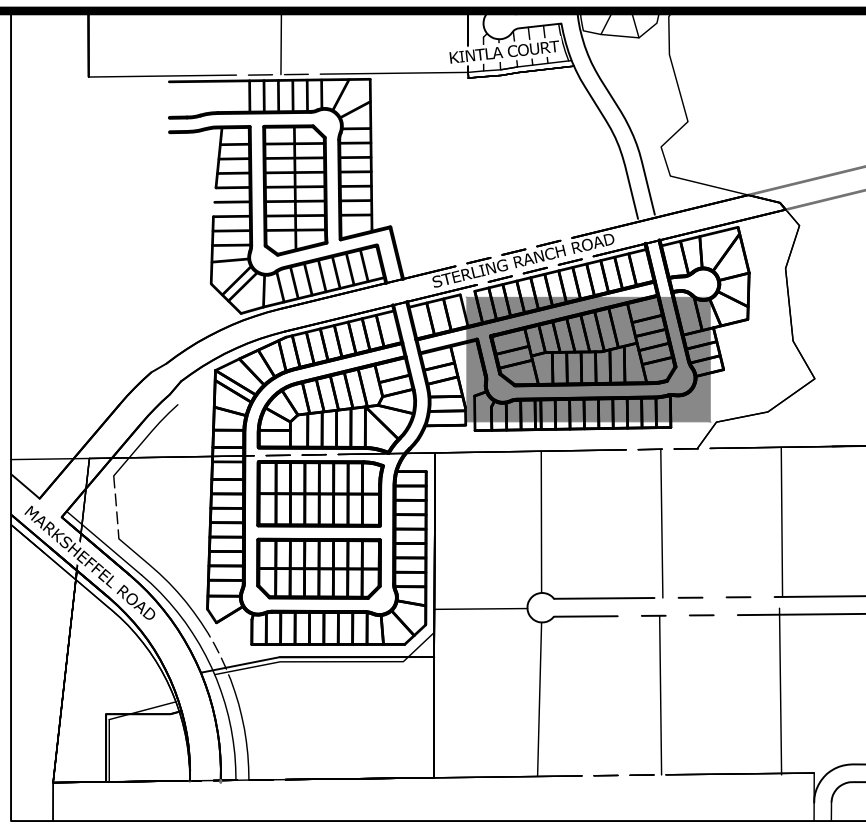
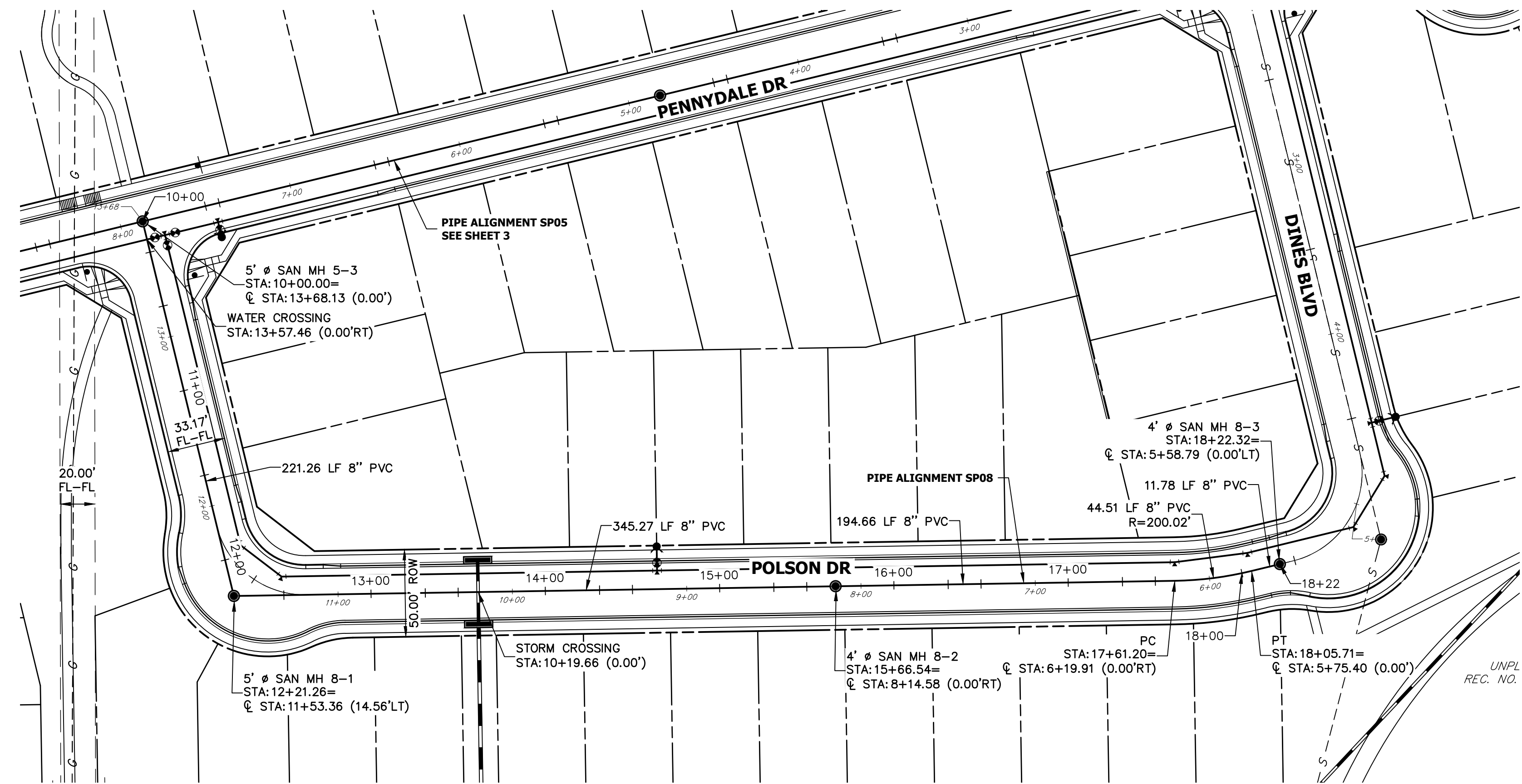


**SP09 PROFILE
STA 10+00.00 TO 11+76.82**

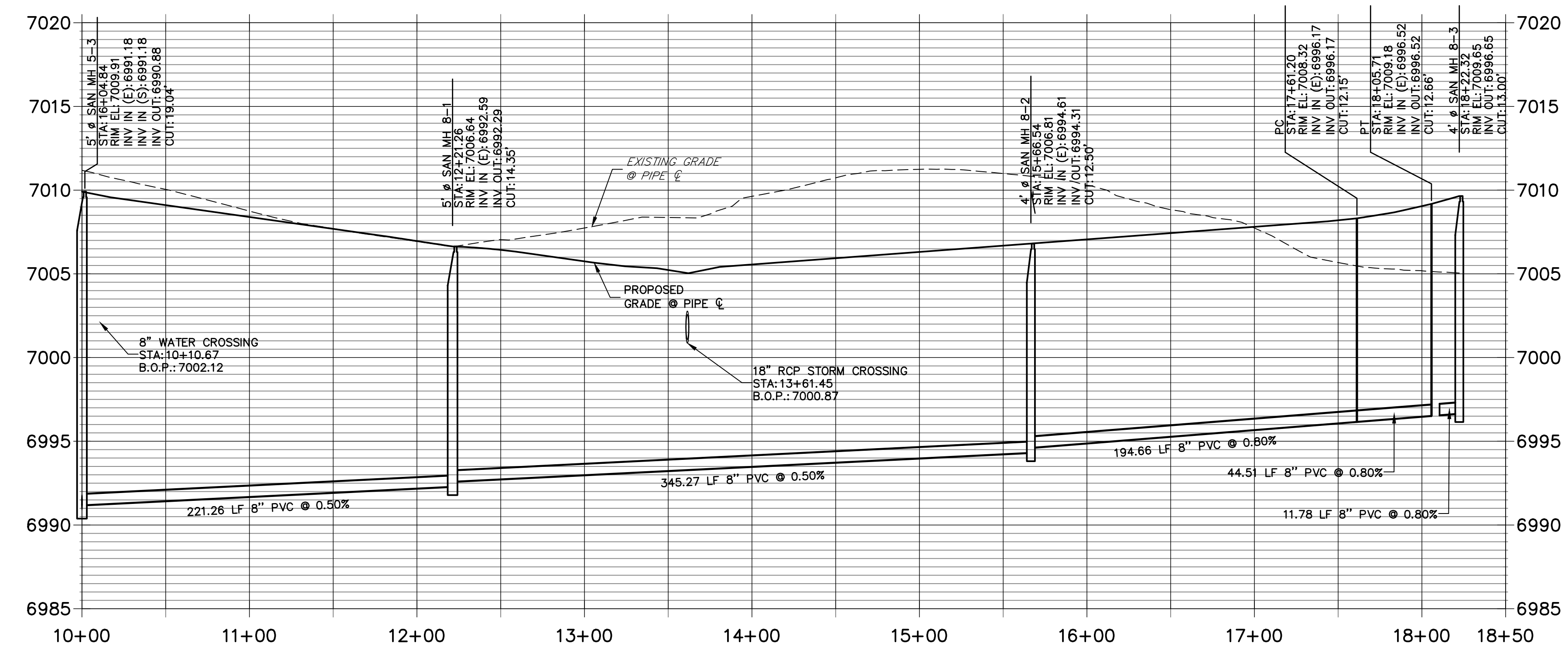


ENGINEER'S STATEMENT
 PREPARED UNDER MY DIRECT SUPERVISION AND ON BEHALF OF JR ENGINEERING
 MIKE A. BRAMLETT, P.E.
 COLORADO P.E. 32314
 FOR AND ON BEHALF OF JR ENGINEERING

UNTIL SUCH TIME AS THESE DRAWINGS ARE APPROVED BY THE APPROPRIATE REVIEWING AGENCIES, JR ENGINEERING APPROVES THEIR USES DESIGNATED BY WRITTEN AUTHORIZATION.	
PREPARED FOR	SR LAND, LLC 20 BOULDER CRESCENT SUITE 201 COLORADO SPRINGS, CO 80903 JAMES F. MORLEY (719) 471-1742
J.R. ENGINEERING A Westman Company	Central 303-740-9888 • Colorado Springs 719-583-2583 Fort Collins 970-491-9888 • www.jrengineering.com
BY	DATE
No. REVISION	
H-SCALE 1"=50'	V-SCALE 1"=5'
DESIGNED BY JRM	DATE 6/8/21
DRAWN BY JRM	CHECKED BY
STERLING RANCH FILING 3	SANITARY SEWER PLANS
SHEET 3 OF 5	JOB NO. 25188.00



**SP08 PROFILE
STA 10+00.00 TO 18+50.00**



Know what's below.
Call before you dig.

ENGINEER'S STATEMENT
 PREPARED UNDER MY DIRECT SUPERVISION AND ON BEHALF OF JR
 ENGINEERING
 MIKE A. BRAMLETT, P.E.
 COLORADO P.E. 32314
 FOR AND ON BEHALF OF JR ENGINEERING
 DATE: 5/26/2021

UNTIL SUCH TIME AS THESE DRAWINGS ARE APPROVED BY THE APPROPRIATE REVIEWING AGENCIES, JR ENGINEERING APPROVES THEIR USES DESIGNATED BY WRITTEN AUTHORIZATION. PREPARED FOR SR LAND, LLC 20 BOULDER CRESCENT SUITE 201 COLORADO SPRINGS, CO 80903 JAMES F. MORLEY (719) 471-1742	J.R. ENGINEERING A Westman Company Centennial 303-740-9383 • Colorado Springs 719-583-2583 Fort Collins 970-491-9888 • www.jrengineering.com	BY	DATE
STERLING RANCH FILING 3 SANITARY SEWER PLANS	No.	REVISION	
	H-SCALE	1"=50'	
	V-SCALE	1"=5'	
	DATE	6/8/21	
	DESIGNED BY	JRM	
DRAWN BY	JRM		
CHECKED BY			
SHEET 4 OF 5 JOB NO. 25188.00			

