



Street Improvements and Storm Drainage Facilities Certification Letter

October 15, 2021

Mr. Brad Walters
El Paso County Development Services
2880 International Circle Suite 110
Colorado Springs, Colorado 80910

RE: The Glen Filing No 9

Dear Mr. Walters:

On Behalf of Glen Development Company, Kiowa Engineering hereby requests that the Public Storm Drainage Facilities, and Public Street Improvements, installed as a part of The Glen a Widefield Filing No 9 development, be accepted for County Maintenance.

Public Storm Drainage Facilities

The Construction of Public Storm Drainage Facilities for The Glen a Widefield Filing No 9 were observed by Kiowa Engineering Corporation. These facilities have been constructed in general compliance with the approved design plans and specifications as filed with The County.

The detention basin as-built drawing is attached.

Based upon this information and information gathered during periodic site visits to the project during the installation of the storm sewer facilities, Kiowa Engineering Corporation is of the opinion that the storm drainage facilities have been constructed in general compliance with the approved design plans and specifications as filed with the County.

The Public Street Improvements

The Public Street Improvements for The Glen at Widefield Filing No 9 consist of; curb and gutter, asphalt paving, crosspans, pedestrian ramps, and signage for the following street segments:

- Spring Glen Drive (from Golden Buffs Drive to North Filing Boundary)
- Bigtooth Maple Drive (from Golden Buffs Drive to Bittercress Place)
- Peachleaf Drive (from Golden Buffs Drive to Bitter Cress Place)
- Bee Balm Place (from Peachleaf Drive to cul-de-sac)
- Bittercress Place (from Cul-De-Sac West to Cul-De-Sac East)

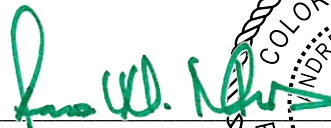

Based upon information gathered during construction and post-construction, Kiowa Engineering Corporation is of the opinion that the street improvements have been constructed in general compliance with the approved design plans and specifications as filed with the County.

On Behalf of the Glen Development Compnay, Kiowa Engineering Corporation hereby requests probationary inspection of these facilities by the County so that the warranty period can begin.

Statement of Engineer in Responsible Charge:

To the best of my knowledge, information and belief, the referenced Public Storm Drainage Facilities and Public Street Improvements have been constructed in general compliance with the approved design plans and specifications as filed with El Paso County.

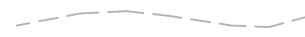
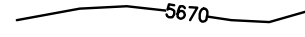
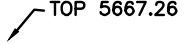
Respectfully submitted,
Kiowa Engineering Corporation

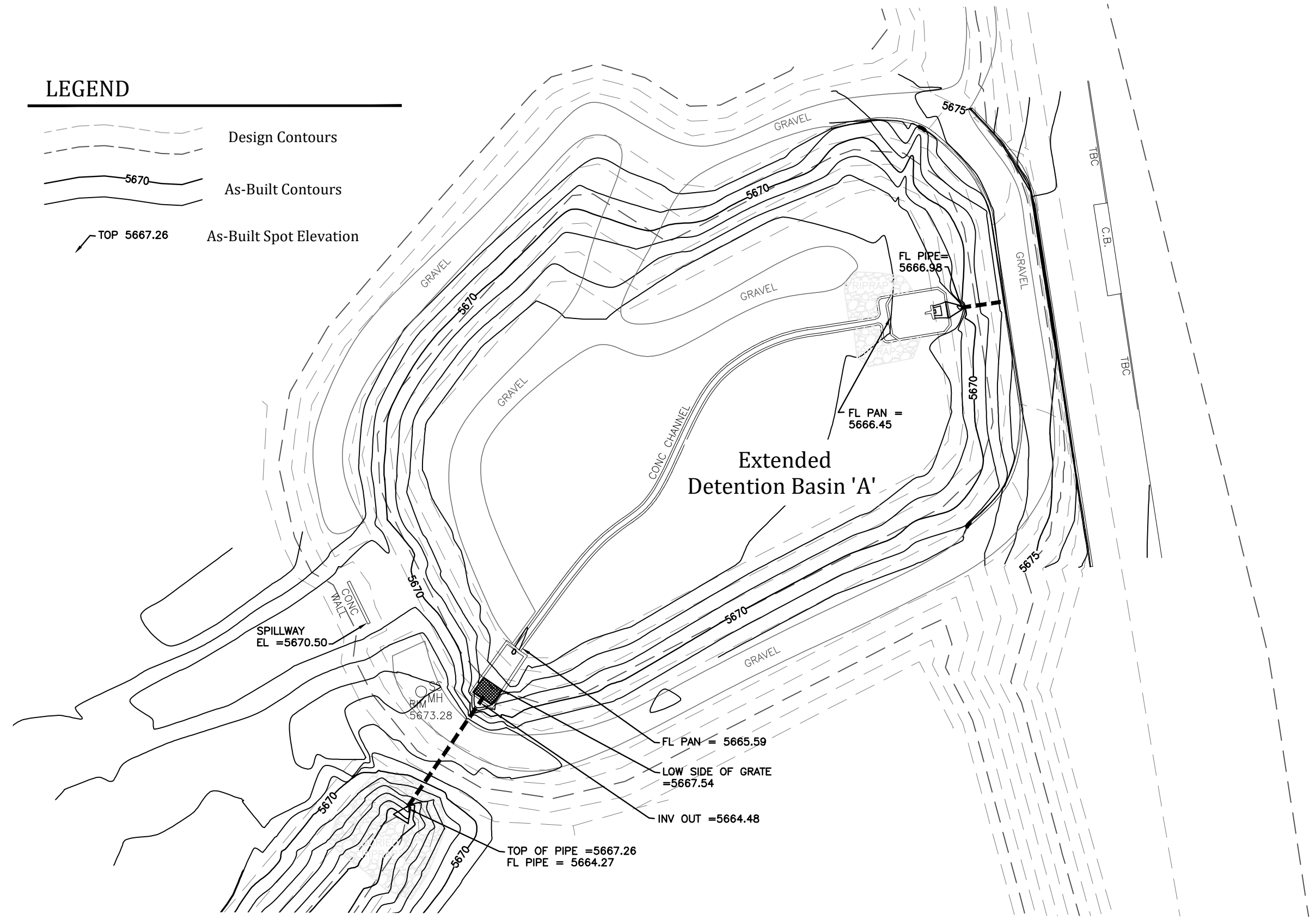



Andrew W. McCord, P.E.
Colorado No. 25057
For and on behalf of Kiowa Engineering Corporation

AWMc/awmc
Kiowa File: 17038

LEGEND

-  Design Contours
-  As-Built Contours
-  As-Built Spot Elevation



PREPARED BY:
Kiowa
 Engineering Corporation
 1604 South 21st Street
 Colorado Springs, Colorado 80904
 (719) 530-7346

DEVELOPER:
W
 WIDEFIELD
 INVESTMENT GROUP
 3 WIDEFIELD BOULEVARD
 COLORADO SPRINGS, CO 80911

THE GLEN AT WIDEFIELD FILING NO 9
As-Built Exhibit for Extended Detention Basin 'A'

Kiowa Project No. 17038
 October 15, 2021

Figure 1