

STRUCTURE IDENTIFIER	STRUCTURE DESCRIPTION	STRUCTURE IDENTIFIER	STRUCTURE DESCRIPTION
1	10' CURB INLET	S1	18-INCH RCP @ 1.0%
2	25' CURB INLET		
3	35' CURB INLET		

The MDDP drainage map (Fig 4) identified constructing riprap channel and a 4'Hx8'W CBC to convey flows from DP3060. The drainage design does not seem to account for conveying the offsite flow through the subdivision.

show the proposed contours

OPEN CHANNEL TO CONVEY FLOW RELEASED FROM DETENTION BASIN A TO WEST FORK JIMMY CAMP CREEK

Remove "Future". EDB A is being constructed with filing 9, therefore the easement must be in place with this filing.

Provide the open channel analysis in the drainage report

Values will be verified on the resubmittal.

Update values for required volume. See redline comments to page 8 of the drainage report

LEGEND

A-1	DRAINAGE BASIN DESIGNATION
4.76 AC	DRAINAGE BASIN ACRES
0.25 0.47	C5 RUNOFF COEF C100 RUNOFF COEFFICIENT
2.2 cfs	5-YEAR RUNOFF
4.3 cfs	100-YEAR RUNOFF
(Arrow)	DIRECTIONAL FLOW ARROW
(Dashed line)	DRAINAGE BASIN BOUNDARY
(Dotted line)	PHASE/FILING BOUNDARY
(Triangle)	DESIGN POINT
(Arrow)	TIME OF CONCENTRATION PATH
(Circle)	HYDRAULIC STRUCTURE IDENTIFIER
(S1)	STORM SEWER IDENTIFIER
(Line)	PROPOSED STORM SEWER PIPE
(Circle)	PROPOSED STORM SEWER MANHOLE
(Line)	PROPOSED STORM DRAINAGE CURB INLET
(Dashed line)	EXISTING CONTOURS
(Solid line)	PROPOSED CONTOURS

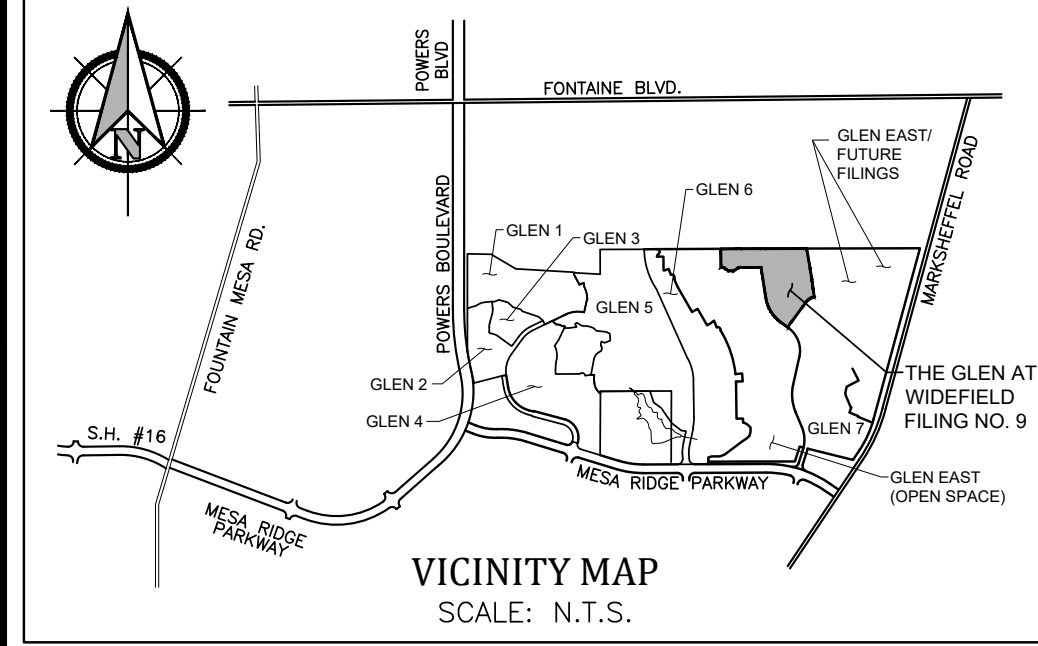
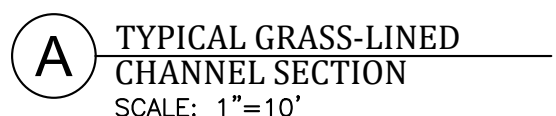
DESIGN POINT FLOWS

	5-YEAR	100-YEAR		5-YEAR	100-YEAR
1	5.6 cfs	17.4 cfs	11	7.7 cfs	25.0 cfs
2	1.4 cfs	4.1 cfs	12	9.3 cfs	28.3 cfs
3	3.1 cfs	9.2 cfs	13	14.7 cfs	43.9 cfs
4	5.0 cfs	15.5 cfs	14	14.8 cfs	44.8 cfs
5	6.0 cfs	17.5 cfs	15	3.8 cfs	11.0 cfs
6	1.0 cfs	4.6 cfs			
7	3.6 cfs	11.2 cfs			
8	0.9 cfs	2.6 cfs			
9	1.6 cfs	4.8 cfs			
10	3.5 cfs	10.4 cfs			

DETENTION BASIN 'A' DATA

	REQUIRED VOLUME	RELEASE RATE
WQCV	0.20 AC-FT	
EURV	0.25 AC-FT	
100-YR	1.04 AC-FT	22.0 CFS
100-YR + 1/2 WQCV	1.14 AC-FT	22.0 CFS

TOP OF EMBANKMENT ELEVATION: 5666.0



GLEN AT WIDEFIELD FILING NO. 9
FINAL DRAINAGE PLAN
DEVELOPED CONDITION
EL PASO COUNTY, COLORADO

Project No.: 17038
Date: March 20, 2018
Design: CJC
Drawn: CJC
Check: AWMc
Revisions: