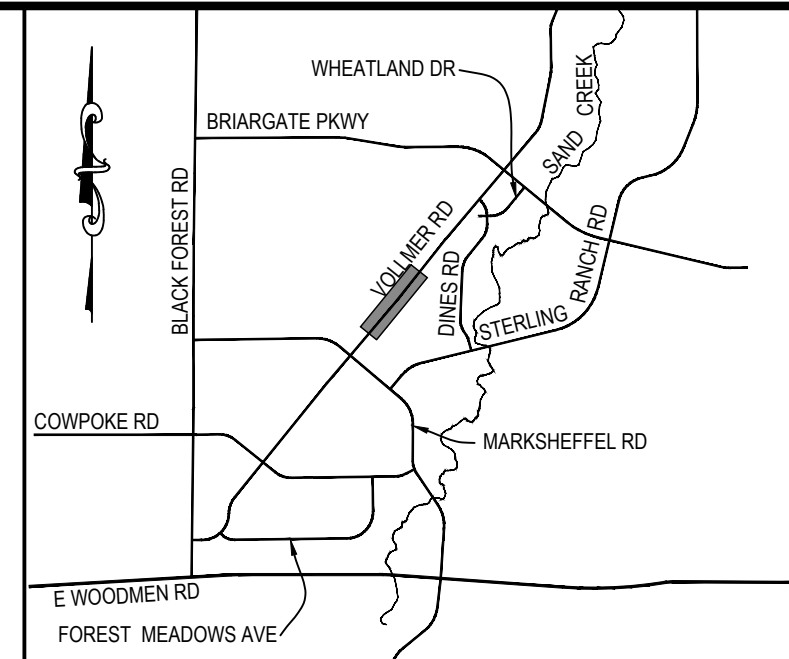


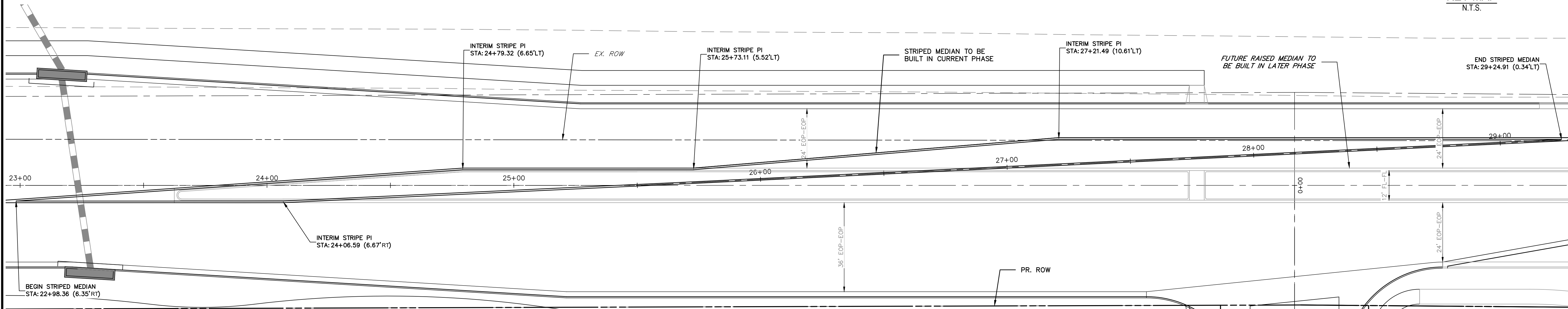
20 10 0 20 40  
ORIGINAL SCALE: 1" = 20'



Know what's below.  
Call before you dig.



KEY MAP  
N.T.S.



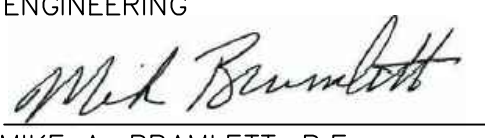
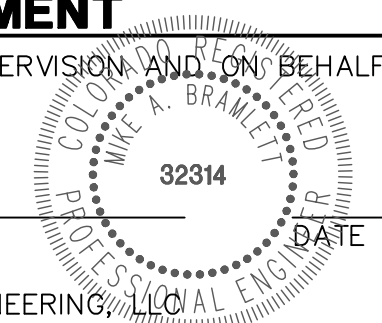
**VOLLMER ROAD INTERIM STRIPED MEDIAN  
(AND FUTURE RAISED MEDIAN)  
STA 22+98.00 TO STA 29+25.00**

UNTIL SUCH TIME AS THESE DRAWINGS ARE APPROVED BY THE APPROPRIATE REVIEWING AGENCIES, JR ENGINEERING APPROVES THEIR USE ONLY AS DESIGNATED BY WRITTEN AUTHORIZATION.  
PREPARED FOR  
**SR LAND, LLC**  
20 BOULDER CRESCENT  
SUITE 201  
COLORADO SPRINGS, CO 80903  
JAMES F. MORLEY  
(719) 471-1742

**J.R. ENGINEERING**  
A Westman Company  
Central 303-740-9888 • Colorado Springs 719-583-2583  
Fort Collins 970-491-9888 • www.jrengineering.com

BY	DATE	No.	REVISION

H-SCALE	1"=50'
V-SCALE	1"=5'
DATE	3/7/22
DESIGNED BY	RAB
DRAWN BY	KRW
CHECKED BY	

**ENGINEER'S STATEMENT**  
 PREPARED UNDER MY DIRECT SUPERVISION AND ON BEHALF OF JR ENGINEERING  
  
 MIKE A. BRAMLETT, P.E.  
 COLORADO P.E. 32314  
 FOR AND ON BEHALF OF JR ENGINEERING, INC. LOCAL ENGINEER  
  
 DATE 3/7/22





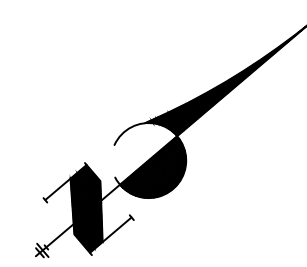


STRIPING LEGEND		
STRIPE	PAVEMENT MARKINGS	MARKING DESCRIPTION
②	DOUBLE CENTERLINE LANE MARKINGS (EPOXY)	PARALLEL SOLID YELLOW, 4" WIDE, 12" APART
③	LANE LANES (EPOXY)	BROKEN WHITE, 4" WIDE, 10' SEGMENTS WITH 30" GAPS
④	BROKEN EDGE/BIKE LANE LINES (EPOXY)	BROKEN WHITE, 4" WIDE, 5' SEGMENTS WITH 15" GAPS
⑤	EDGE/BIKE LANE LINES (EPOXY)	SOLID WHITE, 4" WIDE
⑥	CHANNELIZING LINES (EPOXY)	SOLID WHITE, 8" WIDE
⑦	STOP LINES (THERMO PLASTIC)	SOLID WHITE, 24" WIDE

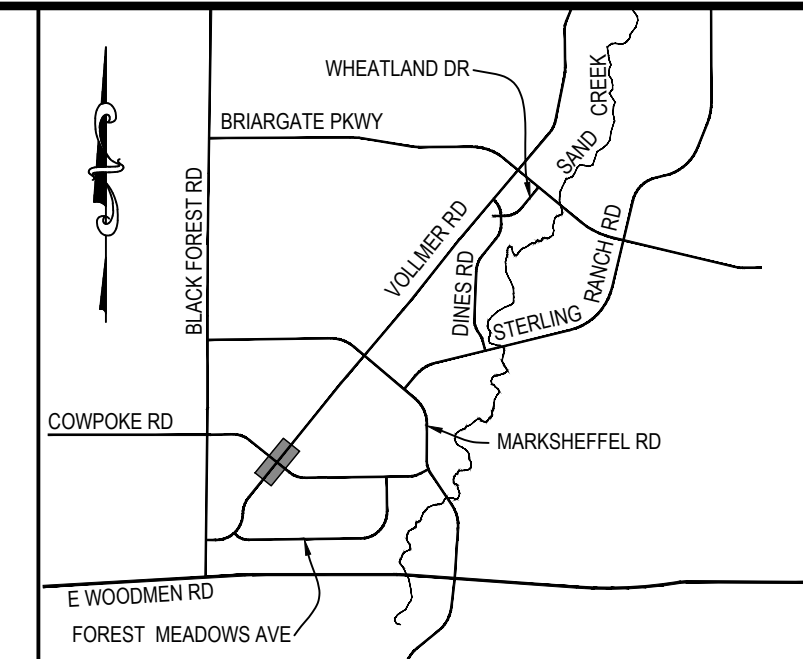
NOTE: ALL STRIPING INSTALLATION SHALL BE PER COLORADO DEPARTMENT OF TRANSPORTATION (CDOT) "M&S STANDARDS" STANDARD PLAN NO. S-627-1.

**NOTE TO CONTRACTOR:**

- ALL 4" AND 8" SOLID OR SKIP PAVEMENT MARKINGS ARE TO BE EPOXY.
- SIGNS AND POLES SHALL BE PER CDOT STANDARDS S-614-8, S-1614-2, AND S-614-3, LATEST REVISION.
- ALL SIGNAGE INSTALLATION IS TO BE IN COMPLIANCE WITH THE MANUAL ON UNIFORM TRAFFIC CONTROL DEVICES (MUTCD).



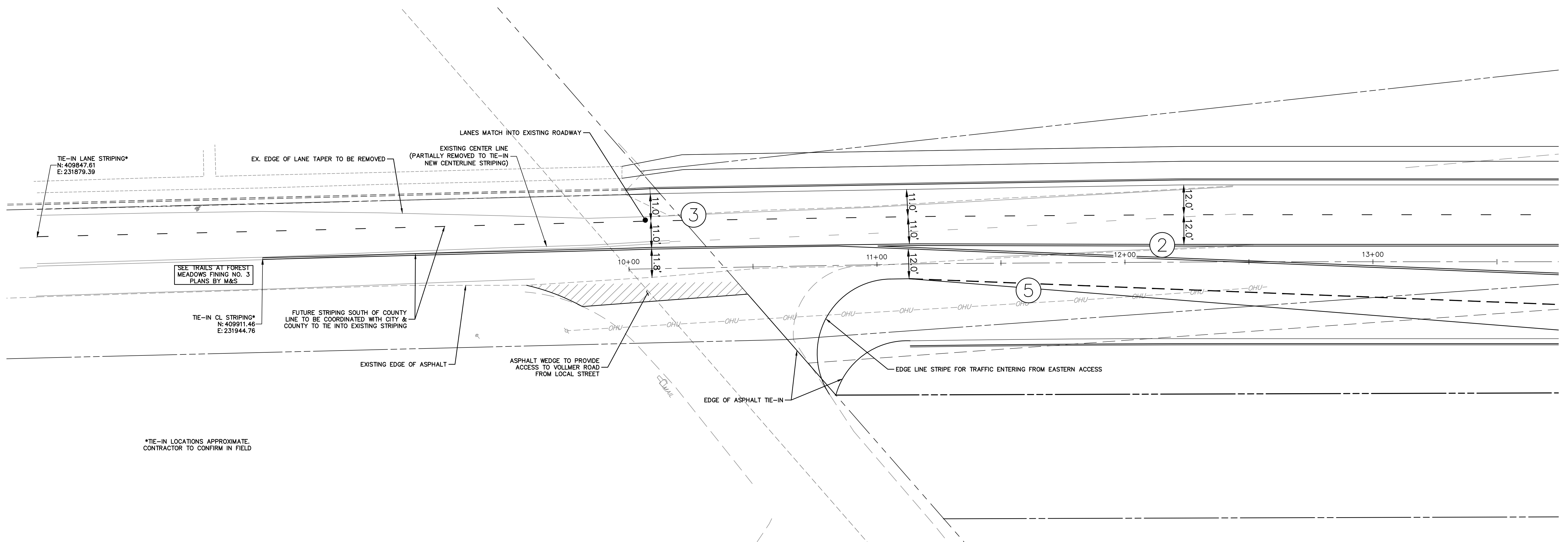
Know what's below.  
Call before you dig.



KEY MAP  
N.T.S.

PREPARED FOR  
**SR LAND, LLC**  
20 BOULDER CRESCENT  
SUITE 201  
COLORADO SPRINGS, CO 80903  
JAMES F. MORLEY  
(719) 471-1742

**J.R. ENGINEERING**  
A Westman Company  
Central 303-740-9888 • Colorado Springs 719-588-2583  
Fort Collins 970-491-9888 • www.jrengineering.com



\*TIE-IN LOCATIONS APPROXIMATE.  
CONTRACTOR TO CONFIRM IN FIELD

**VOLLMER ROAD SOUTHERN TIE-IN TO EXISTING**

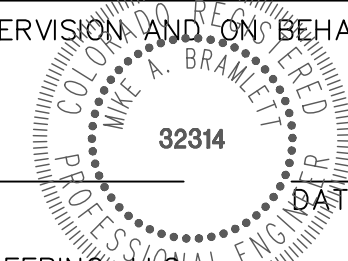
No.	REVISION	BY	DATE						
				H-SCALE	V-SCALE	DATE	DESIGNED BY	DRAWN BY	CHECKED BY
				1"=50'	N/A	3/7/22	RAB	KRW	

**ENGINEER'S STATEMENT**

PREPARED UNDER MY DIRECT SUPERVISION AND ON BEHALF OF JR ENGINEERING

*Mike A. Bramlett*

MIKE A. BRAMLETT, P.E.  
COLORADO P.E. 32314



DATE 3/7/22

FOR AND ON BEHALF OF JR ENGINEERING, A LOCAL ENGINEERING FIRM

STERLING RANCH -  
VOLLMER ROAD FILING 2  
SIGNAGE & STRIPING





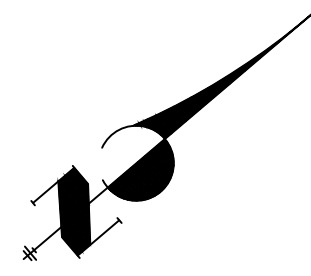




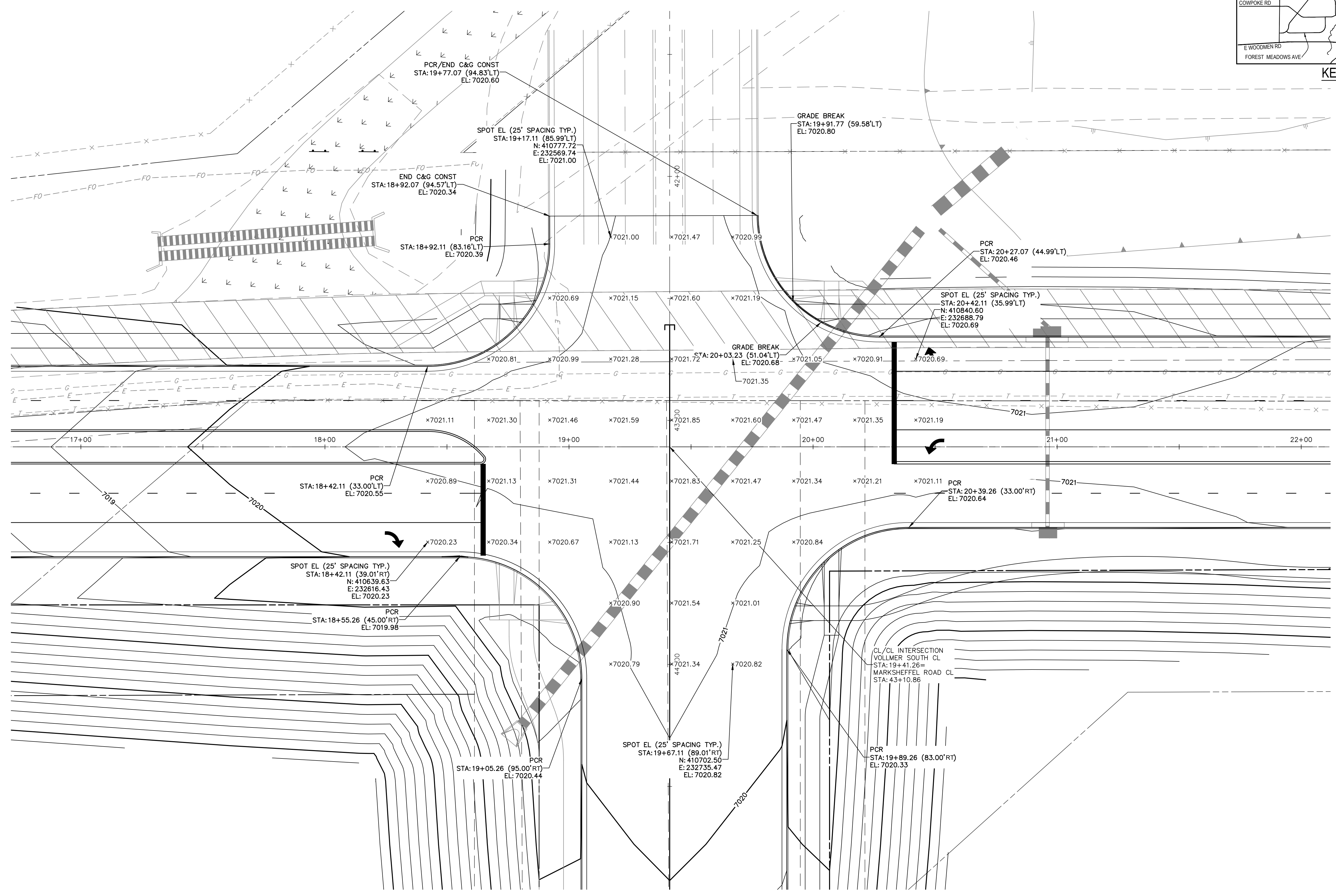
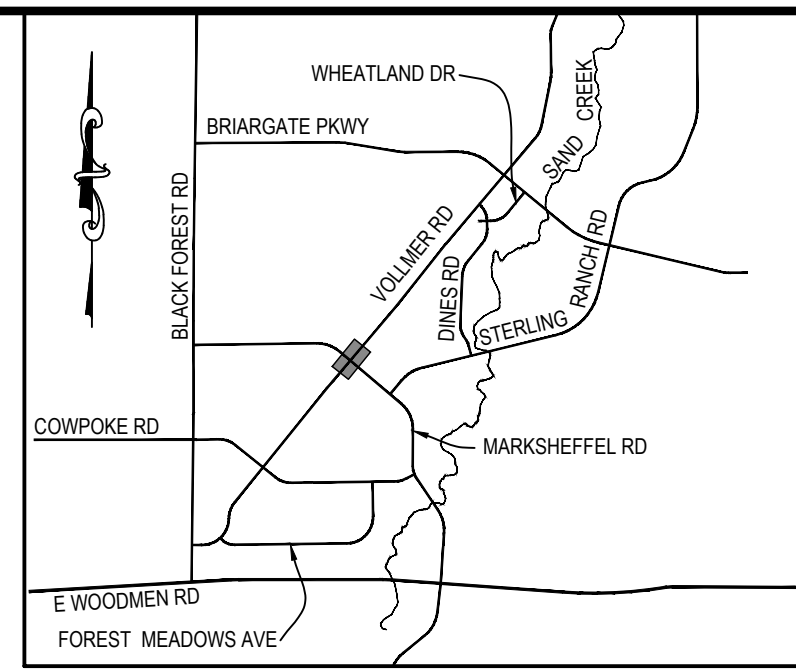








20 10 0 20 40  
ORIGINAL SCALE: 1" = 20'



**VOLLMER ROAD  
INTERSECTION AT MARKSHEFFEL ROAD DETAIL**

**ENGINEER'S STATEMENT**

PREPARED UNDER MY DIRECT SUPERVISION AND ON BEHALF OF JR ENGINEERING  
*Mike A. Bramlett*  
MIKE A. BRAMLETT, P.E.  
COLORADO P.E. 32314  
DATE 3/7/22  
FOR AND ON BEHALF OF JR ENGINEERING, A LOCAL ENGINEERING FIRM

UNTIL SUCH TIME AS THESE DRAWINGS ARE APPROVED BY THE APPROPRIATE REVIEWING AGENCIES, JR ENGINEERING APPROVES THEIR USES DESIGNATED BY WRITTEN AUTHORIZATION.  
PREPARED FOR  
**SR LAND, LLC**  
20 BOULDER CRESCENT  
SUITE 201  
COLORADO SPRINGS, CO 80903  
JAMES F. MORLEY  
(719) 471-1742

**J.R. ENGINEERING**  
A Westman Company  
Central 303-740-9888 • Colorado Springs 719-583-2583  
Fort Collins 970-491-9888 • www.jrengineering.com

BY	DATE	No.	REVISION

STERLING RANCH -  
VOLLMER ROAD FILING 2  
INTERSECTION DETAIL

H-SCALE 1"=50'  
V-SCALE 1"=5'  
DATE 3/7/22  
DESIGNED BY RAB  
DRAWN BY KRW  
CHECKED BY

SHEET 11 OF 11  
JOB NO. 25188.01