

# STERLING RANCH - STERLING RANCH ROAD

## COUNTY OF EL PASO, STATE OF COLORADO

### STREET IMPROVEMENT PLAN

**APRIL 2021**  
**CDR-20-005**

#### AGENCIES

**OWNER/DEVELOPER:** SR LAND, LLC  
20 BOULDER CRESCENT, SUITE 201  
COLORADO SPRINGS, CO 80903  
JAMES F. MORLEY (719) 471-1742

**CIVIL ENGINEER:** JR ENGINEERING, LLC  
5475 TECH CENTER DRIVE  
COLORADO SPRINGS, CO 80919  
MIKE BRAMLETT P.E. (303) 267-6240

**COUNTY ENGINEERING:** EL PASO COUNTY PLANNING  
AND COMMUNITY DEVELOPMENT  
2880 INTERNATIONAL CIRCLE, SUITE 110  
COLORADO SPRINGS, CO 80910  
JEFF RICE, P.E. (719) 520-6300

**TRAFFIC ENGINEERING:** EL PASO COUNTY DEPARTMENT OF PUBLIC WORKS  
3275 AKERS DRIVE  
COLORADO SPRINGS, CO 80922  
JENNIFER IRVINE, P.E. (719) 520-6460

**WATER RESOURCES:** STERLING RANCH METRO DISTRICT ENGINEERS  
JDS-HYDRO CONSULTANTS  
545 E. PIKES PEAK AVE., SUITE 300  
COLORADO SPRINGS, CO 80903  
JOHN MCGINN (719) 668-8769

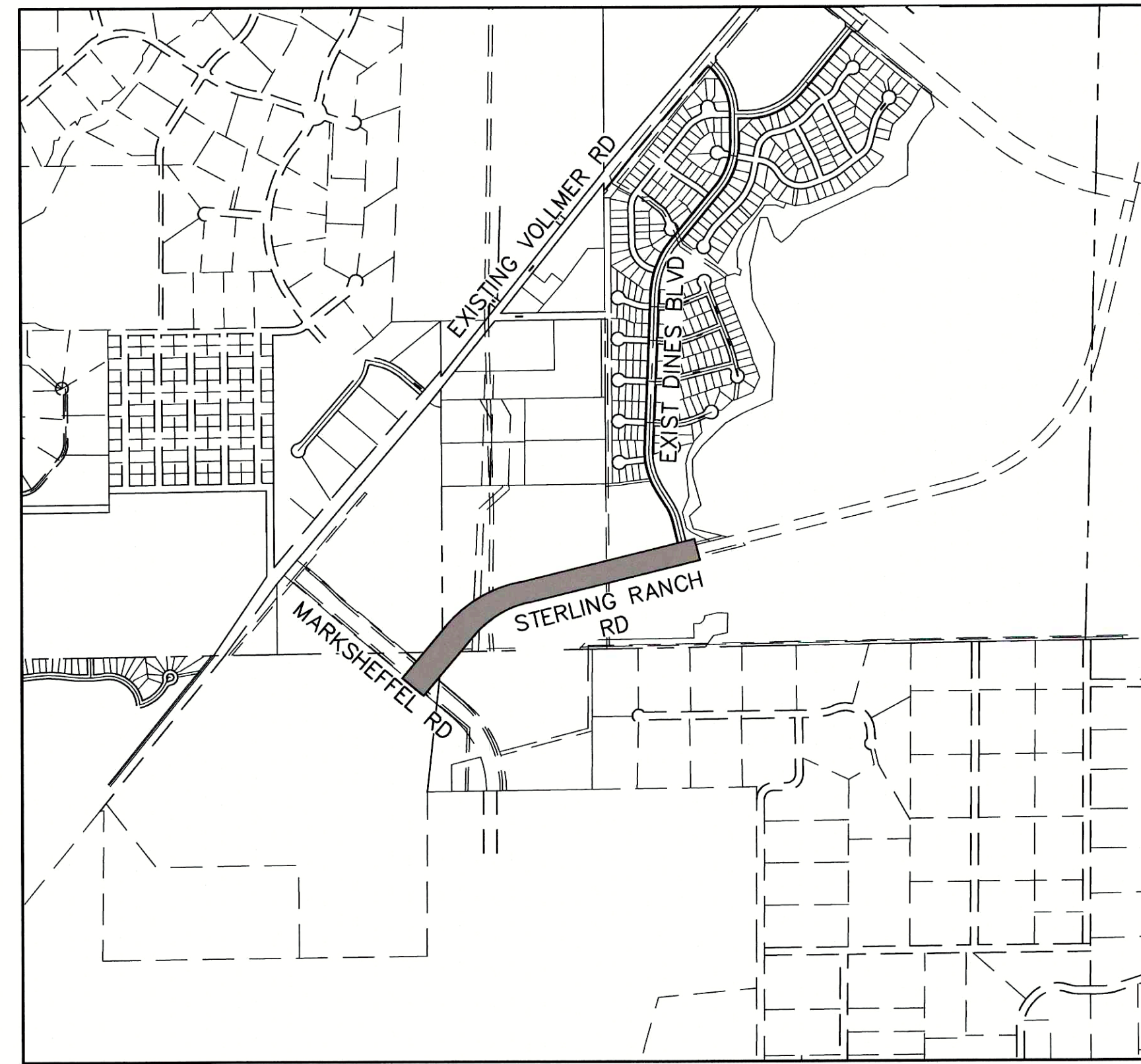
**FIRE DISTRICT:** BLACK FOREST FIRE PROTECTION DISTRICT  
11445 TEACHOUT ROAD  
COLORADO SPRINGS, CO 80908  
CHIEF BRYAN JACK (719) 495-4300

**GAS DEPARTMENT:** COLORADO SPRINGS UTILITIES  
7710 DURANT DR.  
COLORADO SPRINGS, CO 80947  
TIM WENDT (719) 668-3556

**ELECTRIC DEPARTMENT:** MOUNTAIN VIEW ELECTRIC  
11140 E. WOODMEN ROAD  
FALCON, CO 80831  
(719) 495-2283

**COMMUNICATIONS:** QWEST COMMUNICATIONS  
(U.N.C.C. LOCATORS) (800) 922-1987  
AT&T (LOCATORS) (719) 635-3674

**CITY STORMWATER:** STORMWATER ENTERPRISE  
30 S. NEVADA AVENUE, SUITE 401  
COLORADO SPRINGS, CO 80903  
(719)-385-5918



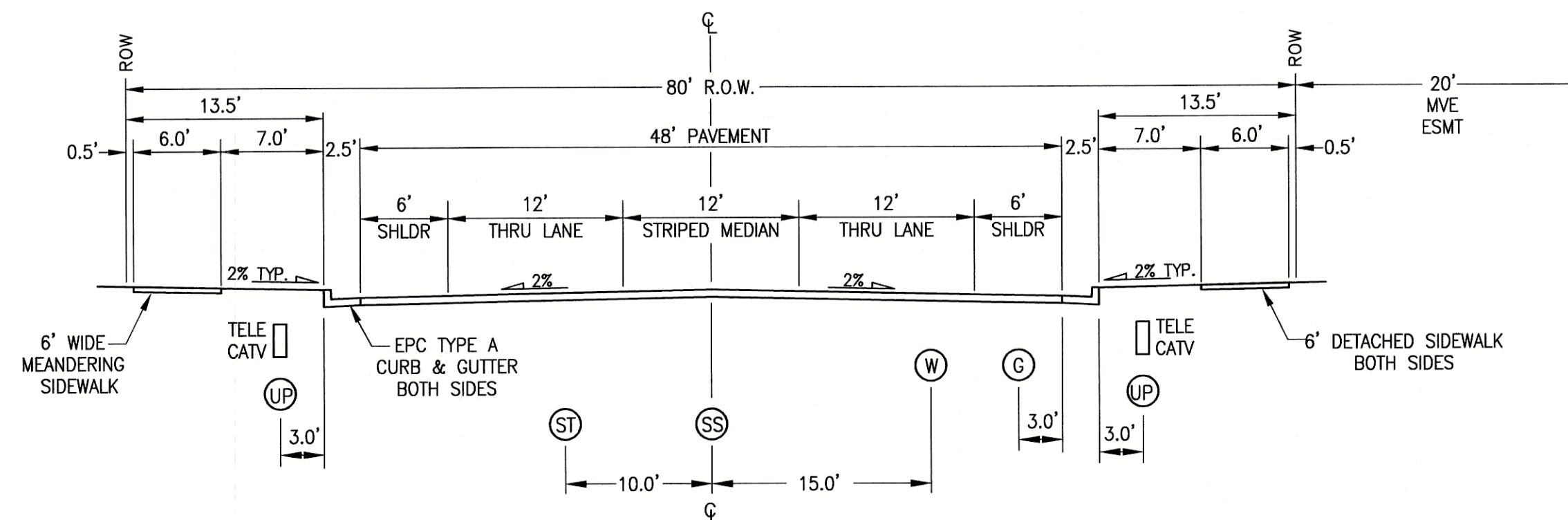
**VICINITY MAP**  
SCALE: 1"=1,000'

#### SHEET INDEX

- 1 COVER SHEET
- 2 NOTES AND DETAILS
- 3 STREET SECTIONS
- 4 PLAN & PROFILE - STA 0+00 TO 12+50
- 5 PLAN & PROFILE - STA 12+50 TO 24+79.37
- 6 MEDIAN DETAILS
- 7 SIGNAGE & STRIPING PLAN

#### BENCHMARKS

1. THE TOP OF AN ALUMINUM SURVEYORS CAP, STAMPED "9853", AT THE SOUTHEAST BOUNDARY CORNER OF BARBARICK SUBDIVISION  
NORTHING = 411416.273  
EASTING = 235167.071  
ELEVATION = 7023.42
2. THE TOP OF A RED PLASTIC SURVEYORS CAP, ILLEGIBLE, AT THE NORTHWEST BOUNDARY CORNER OF PANNEE RANCHEROS SUBDIVISION  
NORTHING = 410095.404  
EASTING = 235052.131  
ELEVATION = 7000.40
3. THE TOP OF A RED PLASTIC SURVEYORS CAP, STAMPED "38141", AT THE SOUTHWEST BOUNDARY CORNER OF BARBARICK SUBDIVISION  
NORTHING = 411399.962  
EASTING = 233849.817  
ELEVATION = 7030.82



**STERLING RANCH ROAD**  
**URBAN NON-RESIDENTIAL COLLECTOR**  
SCALE: NTS  
DESIGN SPEED - 40 MPH  
POSTED SPEED - 35 MPH

#### OWNER/DEVELOPER STATEMENT

I, THE OWNER/DEVELOPER HAVE READ AND WILL COMPLY WITH ALL OF THE REQUIREMENTS SPECIFIED IN THESE DETAILED PLANS AND SPECIFICATIONS.

*James F. Morley* 5/19/2021  
JAMES F. MORLEY DATE

SR LAND, LLC  
20 BOULDER CRESCENT, SUITE 201  
COLORADO SPRINGS, CO 80903

#### EL PASO COUNTY STATEMENT

COUNTY PLAN REVIEW IS PROVIDED ONLY FOR GENERAL CONFORMANCE WITH COUNTY DESIGN CRITERIA. THE COUNTY IS NOT RESPONSIBLE FOR THE ACCURACY AND ADEQUACY OF THE DESIGN, DIMENSIONS, AND/OR ELEVATIONS WHICH SHALL BE CONFIRMED AT THE JOB SITE. THE COUNTY THROUGH THE APPROVAL OF THIS DOCUMENT ASSUMES NO RESPONSIBILITY FOR COMPLETENESS AND/OR ACCURACY OF THIS DOCUMENT.

FILED IN ACCORDANCE WITH THE REQUIREMENTS OF THE EL PASO COUNTY LAND DEVELOPMENT CODE, DRAINAGE CRITERIA MANUAL, VOLUMES 1 AND 2, AND ENGINEERING CRITERIA MANUAL AS AMENDED.

IN ACCORDANCE WITH ECM SECTION 1.12, THESE CONSTRUCTION DOCUMENTS WILL BE VALID FOR CONSTRUCTION FOR A PERIOD OF 2 YEARS FROM THE DATE SIGNED BY THE EL PASO COUNTY ENGINEER. IF CONSTRUCTION HAS NOT STARTED WITHIN THOSE 2 YEARS, THE PLANS WILL NEED TO BE RESUBMITTED FOR APPROVAL, INCLUDING PAYMENT OF REVIEW FEES AT THE PLANNING AND COMMUNITY DEVELOPMENT DIRECTORS DISCRETION.

JENNIFER IRVINE, P.E. DATE  
COUNTY ENGINEER/ECM ADMINISTRATOR

#### ENGINEER'S STATEMENT

THESE DETAILED PLANS AND SPECIFICATIONS WERE PREPARED UNDER MY DIRECT SUPERVISION. SAID PLANS AND SPECIFICATIONS HAVE BEEN PREPARED ACCORDING TO THE CRITERIA ESTABLISHED BY THE COUNTY FOR DETAILED ROADWAY, DRAINAGE, GRADING AND EROSION CONTROL PLANS AND SPECIFICATIONS, AND SAID PLANS AND SPECIFICATIONS ARE IN CONFORMITY WITH APPLICABLE MASTER DRAINAGE PLANS AND MASTER TRANSPORTATION PLANS. SAID PLAN AND SPECIFICATIONS MEET THE PURPOSES FOR WHICH THE PARTICULAR ROADWAY AND DRAINAGE FACILITIES ARE DESIGNED AND ARE CORRECT TO THE BEST OF MY KNOWLEDGE AND BELIEF. I ACCEPT RESPONSIBILITY FOR ANY LIABILITY CAUSED BY ANY NEGLIGENT ACTS, ERRORS OR OMISSIONS ON MY PART IN PREPARATION OF THESE DETAILED PLANS AND SPECIFICATIONS.

*Mike A. Bramlett* 5/13/21  
MIKE A. BRAMLETT, P.E. DATE  
COLORADO P.E. 32314  
FOR AND ON BEHALF OF JR ENGINEERING, LLC AT DING

#### DISTRICT APPROVALS

THESE DOCUMENTS HAVE BEEN REVIEWED AND APPROVED FOR STORM DRAIN AND ASSOCIATED UTILITY SERVICE CONSTRUCTION.

*James F. Morley* 5/19/2021  
FOR AND ON BEHALF OF THE STERLING RANCH METRO DISTRICT DATE



Know what's below.  
Call before you dig.

CDR-20-005

UNTIL SUCH TIME AS THESE DOCUMENTS ARE APPROVED BY THE APPROPRIATE REVIEWING AGENCIES, JR ENGINEERING APPROVES THEIR USE ONLY FOR THE PURPOSES DESIGNATED BY WRITTEN AUTHORIZATION.

PREPARED FOR  
SR LAND, LLC  
20 BOULDER CRESCENT  
SUITE 201  
COLORADO SPRINGS, CO 80903  
JAMES F. MORLEY  
(719) 471-1742

**JR ENGINEERING**  
A Westman Company  
Central 303-740-9888 • Colorado Springs 719-588-2888  
Fort Collins 970-491-8888 • www.jrengineering.com

No.	REVISION	DATE	BY	DATE	DESIGNED BY	DRAWN BY	CHECKED BY	H-SCALE	V-SCALE
								N/A	N/A
					05/13/21				

STERLING RANCH -  
STERLING RANCH ROAD  
COVER SHEET



**GENERAL CONSTRUCTION NOTES:**

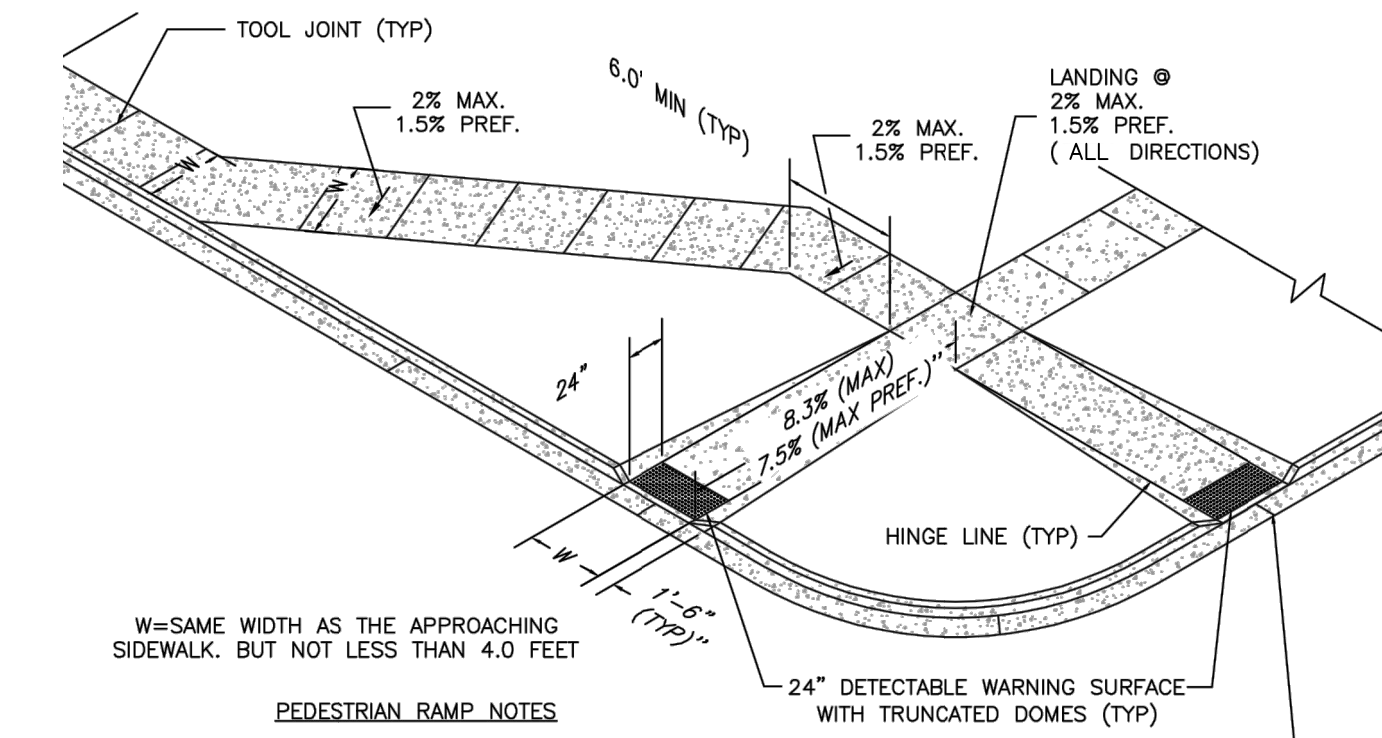
- IT SHALL BE THE RESPONSIBILITY OF THE CONTRACTOR TO VERIFY THE EXISTENCE AND LOCATION OF ALL UNDERGROUND UTILITIES ALONG THE ROUTE OF THE WORK. THE OMISSION FROM OR THE INCLUSION OF UTILITY LOCATIONS ON THE PLANS IS NOT TO BE CONSIDERED AS THE NONEXISTENCE OF OR A DEFINITE LOCATION OF EXISTING UNDERGROUND UTILITIES.
- THE CONTRACTOR WILL TAKE THE NECESSARY PRECAUTIONS TO PROTECT EXISTING UTILITIES FROM DAMAGE DUE TO THIS OPERATION. ANY DAMAGE TO THE UTILITIES WILL BE REPAIRED AT THE CONTRACTOR'S EXPENSE, AND ANY SERVICE DISRUPTION WILL BE SETTLED BY THE CONTRACTOR.
- ADDITIONAL EROSION CONTROL STRUCTURES MAY BE REQUIRED AT THE TIME OF CONSTRUCTION.
- ALL BACKFILL, SUB-BASE, AND/OR BASE COURSE (CLASS 6) MATERIAL SHALL BE COMPACTED PER THE SOILS ENGINEER'S RECOMMENDATIONS, AND APPROVED BY EL PASO COUNTY PCD.
- ALL STATIONING IS CENTERLINE OF IMPROVEMENTS UNLESS OTHERWISE INDICATED. ALL ELEVATIONS ARE FLOW LINE UNLESS OTHERWISE INDICATED AS TOP BACK OF CURB (TBC), ASPHALT (ASP), OR TOP OF INLET OR BOX (TOB).
- ALL DISTURBED PAVEMENT EDGES SHALL BE CUT TO NEAT LINES. REPAIR SHALL CONFORM TO EPC ECM APPENDIX K - 1.2C.
- ALL INTERSECTION ACCESSES TO BE CONSTRUCTED WITH A 25 FOOT SIGHT VISIBILITY TRIANGLES EXCEPT [VOLLMER ROAD, MARKSHEFFEL ROAD, BRAIRGATE PARKWAY] WHICH IS AN ARTERIAL AND A 50 FOOT SIGHT VISIBILITY TRIANGLE IS REQUIRED AND THERE SHALL BE NO OBSTRUCTIONS GREATER THAN 18" IN THIS AREA.
- ALL CULVERTS AND STORM DRAIN PIPES SHALL BE SMOOTH INTERIOR CORRUGATED POLYETHYLENE PIPE (HDPE), REINFORCED CONCRETE PIPE (RCP). ALL CULVERTS SHALL BE PLACED COMPLETE WITH FLARED END SECTIONS. ADEQUACY OF MATERIAL THICKNESS FOR ANY CSP INSTALLED SHALL BE VERIFIED BY OWNER'S GEOTECHNICAL ENGINEER TO SUPPORT MINIMUM 50 YEAR DESIGN LIFE. CULVERTS MUST CONFORM TO EPC ECM SECTION 3.32 - CULVERTS.
- ASPHALT THICKNESS AND BASE COURSE THICKNESS (COMPACTED) FOR ROADS SHALL BE PER DESIGN REPORT BY OWNER'S GEOTECHNICAL ENGINEER. OWNER'S GEOTECHNICAL ENGINEER TO BE ON SITE AT THE TIME OF ROAD CONSTRUCTION TO EVALUATE SOIL CONDITIONS AND DETERMINE IF ADDITIONAL MEASURES ARE NECESSARY TO ASSURE STABILITY OF THE NEW ROADS. PAVEMENT DESIGN SHALL BE APPROVED BY EL PASO COUNTY PLANNING AND COMMUNITY DEVELOPMENT ENGINEERING DIVISION PRIOR TO CONSTRUCTION.

**SIGNING AND STRIPING NOTES:**

- ALL SIGNS AND PAVEMENT MARKINGS SHALL BE IN COMPLIANCE WITH THE CURRENT MANUAL ON UNIFORM TRAFFIC CONTROL DEVICES (MUTCD).
- REMOVAL OF EXISTING PAVEMENT MARKINGS SHALL BE ACCOMPLISHED BY A METHOD THAT DOES NOT MATERIALLY DAMAGE THE PAVEMENT. THE PAVEMENT MARKINGS SHALL BE REMOVED TO THE EXTENT THAT THEY WILL NOT BE VISIBLE UNDER DAY OR NIGHT CONDITIONS. AT NO TIME WILL IT BE ACCEPTABLE TO PAINT OVER EXISTING PAVEMENT MARKINGS.
- ANY DEVIATION FROM THE STRIPING AND SIGNING PLAN SHALL BE APPROVED BY EL PASO COUNTY PCD.
- ALL SIGNS SHOWN ON THE SIGNING AND STRIPING PLAN SHALL BE NEW SIGNS. EXISTING SIGNS MAY REMAIN OR BE REUSED IF THEY MEET CURRENT EL PASO COUNTY AND MUTCD STANDARDS.
- STREET NAME AND REGULATORY STOP SIGNS SHALL BE ON THE SAME POST AT INTERSECTIONS.
- ALL REMOVED SIGNS SHALL BE DISPOSED OF IN A PROPER MANNER BY THE CONTRACTOR.
- ALL STREET NAME SIGNS SHALL HAVE "D" SERIES LETTERS, WITH LOCAL ROADWAY SIGNS BEING 4" UPPER-LOWER CASE LETTERING ON 8" BLANK AND NON-LOCAL ROADWAY SIGNS BEING 6" LETTERING, UPPER-LOWER CASE ON 12" BLANK, WITH A WHITE BORDER THAT IS NOT RECESSED. MULTI-LANE ROADWAYS WITH SPEED LIMITS OF 40 MPH OR HIGHER SHALL HAVE 8" UPPER-LOWER CASE LETTERING ON 18" BLANK WITH A WHITE BORDER THAT IS NOT RECESSED. THE WIDTH OF THE NON-RECESSED WHITE BORDERS SHALL MATCH PAGE 255 OF THE 2012 MUTCD "STANDARD HIGHWAY SIGNS".
- ALL TRAFFIC SIGNS SHALL HAVE A MINIMUM HIGH INTENSITY PRISMATIC GRADE SHEETING.
- ALL LOCAL RESIDENTIAL STREET SIGNS SHALL BE MOUNTED ON A 1.75" X 1.75" SQUARE TUBE SIGN POST AND STUB POST BASE. FOR OTHER APPLICATIONS, REFER TO THE CDOT STANDARD S-614-8 REGARDING USE OF THE P2 TUBULAR STEEL POST SLIPBASE DESIGN.
- ALL SIGNS SHALL BE SINGLE SHEET ALUMINUM WITH 0.100" MINIMUM THICKNESS.
- ALL LIMIT LINES/STOP LINES, CROSSWALK LINES, PAVEMENT LEGENDS, AND ARROWS SHALL BE A MINIMUM 125 MIL THICKNESS PREFORMED THERMOPLASTIC PAVEMENT MARKINGS WITH TAPERED LEADING EDGES PER CDOT STANDARD S-627-1. WORD AND SYMBOL MARKINGS SHALL BE THE NARROW TYPE. STOP BARS SHALL BE 24" IN WIDTH. CROSSWALKS LINES SHALL BE 12" WIDE AND 8' LONG PER CDOT S-627-1.
- ALL LONGITUDINAL LINES SHALL BE A MINIMUM 15MIL THICKNESS EPOXY PAINT. ALL NON-LOCAL RESIDENTIAL ROADWAYS SHALL INCLUDE BOTH RIGHT AND LEFT EDGE LINE STRIPING AND ANY ADDITIONAL STRIPING AS REQUIRED BY CDOT S-627-1.
- THE CONTRACTOR SHALL NOTIFY EL PASO COUNTY PLANNING AND COMMUNITY DEVELOPMENT (719) 520-6819 PRIOR TO AND UPON COMPLETION OF SIGNING AND STRIPING.
- THE CONTRACTOR SHALL OBTAIN A WORK IN THE RIGHT OF WAY PERMIT FROM THE EL PASO COUNTY DPW PRIOR TO ANY SIGNAGE OR STRIPING WORK WITHIN AN EXISTING EL PASO COUNTY ROADWAY.

**STANDARD NOTES FOR EL PASO COUNTY CONSTRUCTION PLANS:**

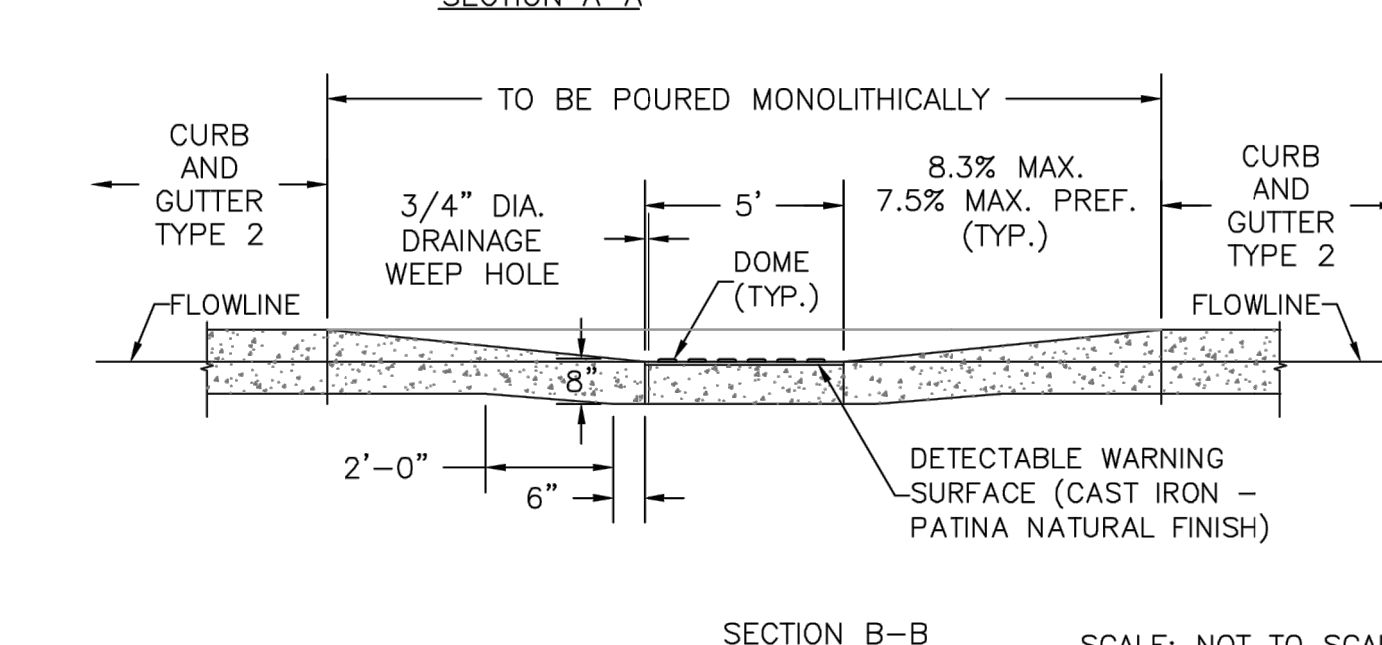
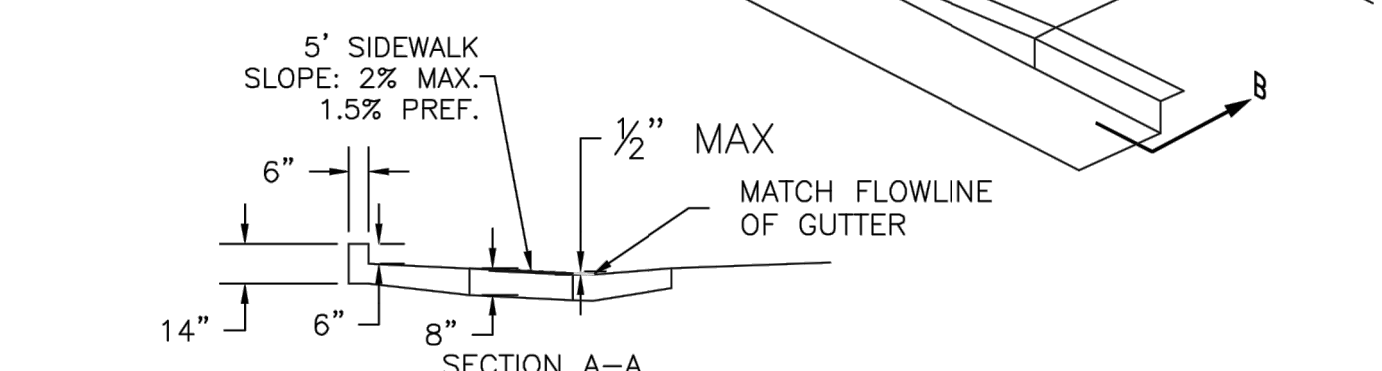
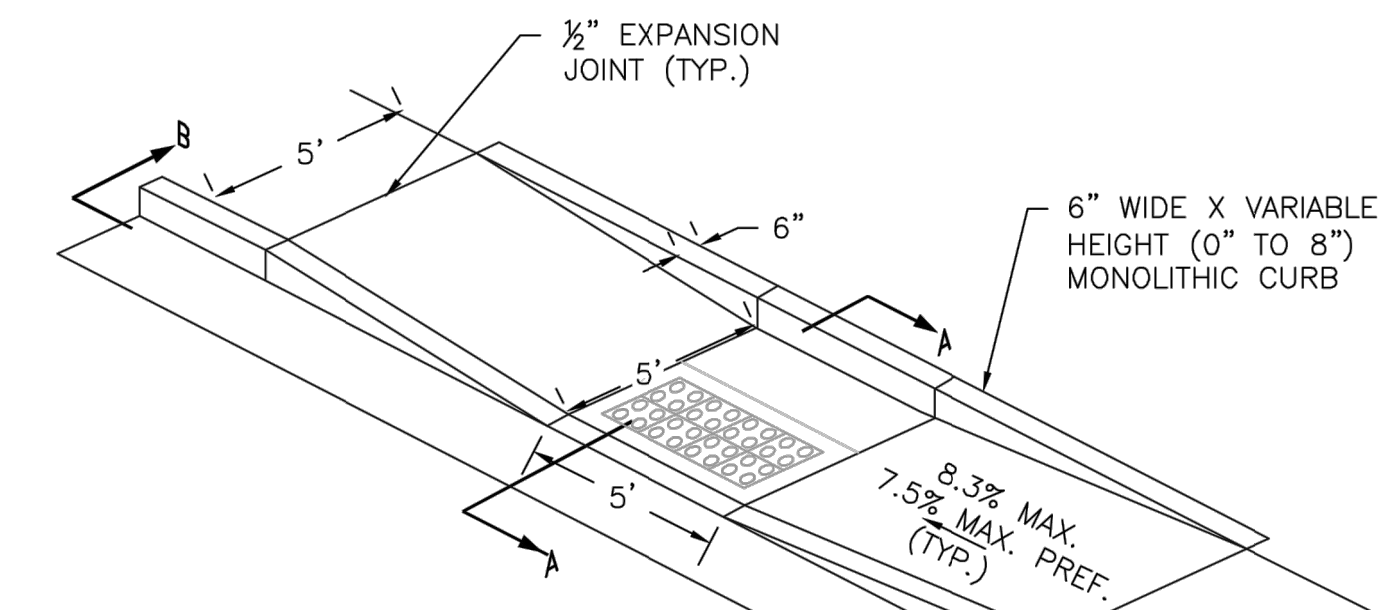
- ALL DRAINAGE AND ROADWAY CONSTRUCTION SHALL MEET THE STANDARDS AND SPECIFICATIONS OF THE CITY OF COLORADO SPRINGS/EL PASO COUNTY DRAINAGE CRITERIA MANUAL, VOLUMES 1 AND 2, AND THE EL PASO COUNTY ENGINEERING CRITERIA MANUAL.
- CONTRACTOR SHALL BE RESPONSIBLE FOR THE NOTIFICATION AND FIELD NOTIFICATION OF ALL EXISTING UTILITIES, WHETHER SHOWN ON THE PLANS OR NOT, BEFORE BEGINNING CONSTRUCTION. LOCATION OF EXISTING UTILITIES SHALL BE VERIFIED BY THE CONTRACTOR PRIOR TO CONSTRUCTION. CALL 811 TO CONTACT THE UTILITY NOTIFICATION CENTER OF COLORADO (UNCC).
- CONTRACTOR SHALL KEEP A COPY OF THESE APPROVED PLANS, THE GRADING AND EROSION CONTROL PLAN, THE STORMWATER MANAGEMENT PLAN (SWMP), THE SOILS AND GEOTECHNICAL REPORT, AND THE APPROPRIATE DESIGN AND CONSTRUCTION STANDARDS AND SPECIFICATIONS AT THE JOB SITE AT ALL TIMES, INCLUDING THE FOLLOWING:
  - EL PASO COUNTY ENGINEERING CRITERIA MANUAL (ECM)
  - CITY OF COLORADO SPRINGS/EL PASO COUNTY DRAINAGE CRITERIA MANUAL, VOLUMES 1 AND 2
  - COLORADO DEPARTMENT OF TRANSPORTATION (CDOT) STANDARD SPECIFICATIONS FOR ROAD AND BRIDGE CONSTRUCTION
  - CDOT M & S STANDARDS
- NOTWITHSTANDING ANYTHING DEPICTED IN THESE PLANS IN WORDS OR GRAPHIC REPRESENTATION, ALL DESIGN AND CONSTRUCTION RELATED TO ROADS, STORM DRAINAGE AND EROSION CONTROL SHALL CONFORM TO THE STANDARDS AND REQUIREMENTS OF THE MOST RECENT VERSION OF THE RELEVANT ADOPTED EL PASO COUNTY STANDARDS, INCLUDING THE LAND DEVELOPMENT CODE, THE ENGINEERING CRITERIA MANUAL, THE DRAINAGE CRITERIA MANUAL, AND THE DRAINAGE CRITERIA MANUAL VOLUME 2. ANY DEVIATIONS FROM REGULATIONS AND STANDARDS MUST BE REQUESTED, AND APPROVED, IN WRITING. ANY MODIFICATIONS NECESSARY TO MEET CRITERIA AFTER-THE-FACT WILL BE ENTIRELY THE DEVELOPER'S RESPONSIBILITY TO RECTIFY.
- IT IS THE DESIGN ENGINEER'S RESPONSIBILITY TO ACCURATELY SHOW EXISTING CONDITIONS, BOTH ONSITE AND OFFSITE, ON THE CONSTRUCTION PLANS. ANY MODIFICATIONS NECESSARY DUE TO CONFLICTS, OMISSIONS, OR CHANGED CONDITIONS WILL BE ENTIRELY THE DEVELOPER'S RESPONSIBILITY TO RECTIFY.
- CONTRACTOR SHALL SCHEDULE A PRE-CONSTRUCTION MEETING WITH EL PASO COUNTY PCD INSPECTIONS, PRIOR TO STARTING CONSTRUCTION.
- IT IS THE CONTRACTOR'S RESPONSIBILITY TO UNDERSTAND THE REQUIREMENTS OF ALL JURISDICTIONAL AGENCIES AND TO OBTAIN ALL REQUIRED PERMITS, INCLUDING BUT NOT LIMITED TO EL PASO COUNTY EROSION AND STORMWATER QUALITY CONTROL PERMIT (ESQCP), REGIONAL BUILDING FLOODPLAIN DEVELOPMENT PERMIT, U.S. ARMY CORPS OF ENGINEERS-ISSUED 401 AND/OR 404 PERMITS, AND COUNTY AND STATE FUGITIVE DUST PERMITS.
- CONTRACTOR SHALL NOT DEVIATE FROM THE PLANS WITHOUT FIRST OBTAINING WRITTEN APPROVAL FROM THE DESIGN ENGINEER AND PCD. CONTRACTOR SHALL NOTIFY THE DESIGN ENGINEER IMMEDIATELY UPON DISCOVERY OF ANY ERRORS OR INCONSISTENCIES.
- ALL STORM DRAIN PIPE SHALL BE CLASS III RCP UNLESS OTHERWISE NOTED AND APPROVED BY PCD.
- CONTRACTOR SHALL COORDINATE GEOTECHNICAL TESTING PER ECM STANDARDS. PAVEMENT DESIGN SHALL BE APPROVED BY EL PASO COUNTY PCD PRIOR TO PLACEMENT OF CURB AND GUTTER AND PAVEMENT.
- ALL CONSTRUCTION TRAFFIC MUST ENTER/EXIT THE SITE AT APPROVED CONSTRUCTION ACCESS POINTS.
- SIGHT VISIBILITY TRIANGLES AS IDENTIFIED IN THE PLANS SHALL BE PROVIDED AT ALL INTERSECTIONS. OBSTRUCTIONS GREATER THAN 18 INCHES ABOVE FLOWLINE ARE NOT ALLOWED WITHIN SIGHT TRIANGLES.
- SIGNING AND STRIPING SHALL COMPLY WITH EL PASO COUNTY PCD AND MUTCD CRITERIA. [IF APPLICABLE, ADDITIONAL SIGNING AND STRIPING NOTES WILL BE PROVIDED.]
- CONTRACTOR SHALL OBTAIN ANY PERMITS REQUIRED BY EL PASO COUNTY PCD, INCLUDING WORK WITHIN THE RIGHT-OF-WAY AND SPECIAL TRANSPORT PERMITS.
- THE LIMITS OF CONSTRUCTION SHALL REMAIN WITHIN THE PROPERTY LINE UNLESS OTHERWISE NOTED. THE OWNER/DEVELOPER SHALL OBTAIN WRITTEN PERMISSION AND EASEMENTS, WHERE REQUIRED, FROM ADJOINING PROPERTY OWNER(S) PRIOR TO ANY OFF-SITE DISTURBANCE, GRADING, OR CONSTRUCTION.



- PEDESTRIAN RAMP NOTES**
- ALL WORK SHALL BE DONE IN ACCORDANCE WITH THE CURRENT ENGINEERING CRITERIA MANUAL AND ADA REQUIREMENTS.
  - CONTRACTOR TO NOTIFY ENGINEERING DIVISION INSPECTION STAFF 48 HOURS PRIOR TO CONCRETE PLACEMENT.
  - PEDESTRIAN CURB RAMP CONSTRUCTION SHALL BE A MINIMUM 4,500 PSI CONCRETE, MINIMUM 4" THICK, NON-COLORED, NON-SCORED, COARSE BROOM FINISH.
  - PEDESTRIAN CURB RAMP LOCATION AND LENGTH MAY REQUIRE MODIFICATION TO MAINTAIN THE 8.3% MAXIMUM RUNNING RAMP SLOPE DUE TO STREET INTERSECTION GRADES AND/OR ALIGNMENTS. SEE ECM SECTION 6.3.6 FOR PEDESTRIAN PUSHBUTTON LOCATION REQUIREMENTS.
  - DETECTABLE WARNING SURFACE SHALL START A MINIMUM OF 6" BUT NOT MORE THAN 8" FROM THE FLOWLINE OF THE CURB AT ANY POINT.
  - DETECTABLE WARNING SURFACE SHALL BE PREFABRICATED, CAST IRON (PATINA NATURAL FINISH) AND IN ACCORDANCE WITH EGM CHAPTER 6 AND SD.2-42. THERMOPLASTIC TRUNCATED DOMES AND PAVERS WILL NOT BE ACCEPTED.
  - THE DETECTABLE WARNING SURFACE SHALL BE 24" IN LENGTH AND THE FULL WIDTH OF THE RAMP.
  - PEDESTRIAN CURB RAMP WIDTH REQUIRED IS SAME AS APPROACHING SIDEWALK; 4" MINIMUM.
  - ALL PEDESTRIAN CURB RAMP SHALL BE PERPENDICULAR TO TRAFFIC WITH THE EXCEPTION OF MID-BLOCK OR TERMINAL RAMPS WHICH MAY BE PARALLEL SUBJECT TO APPROVAL.
  - DRAINAGE STRUCTURES, TRAFFIC SIGNAL/SIGNALAGE, UTILITIES/JUNCTION BOXES, OR OTHER OBSTRUCTIONS WITHIN PROPOSED PEDESTRIAN CURB RAMP AREAS AND LANDINGS ARE PROHIBITED.
  - THE COUNTER SLOPE OF THE GUTTER OR ROAD AT THE FOOT OF A RAMP SHALL NOT EXCEED 3%.

- GENERAL NOTES**
- WHERE THE 1'-6" FLARED SIDES OF A PERPENDICULAR CURB RAMP IS (ARE) CONTIGUOUS WITH A PEDESTRIAN OR HAND SURFACE AREA (PEDESTRIAN CIRCULATION PATH), THE MAXIMUM FLARE SLOPE SHALL NOT EXCEED 10:1.
  - PEDESTRIAN WALKWAY (PEDESTRIAN ACCESS ROUTE) AND/OR LOCATION OF EXISTING OR FUTURE PEDESTRIAN RAMPS ON OPPOSITE CORNERS SHALL BE REVIEWED BEFORE CONSTRUCTING NEW RAMPS.
  - AT MARKED PEDESTRIAN CROSSINGS, THE BOTTOM OF THE RAMPS, EXCLUSIVE OF THE FLARE SIDES, SHALL BE TOTALLY CONTAINED WITHIN THE MARKINGS.

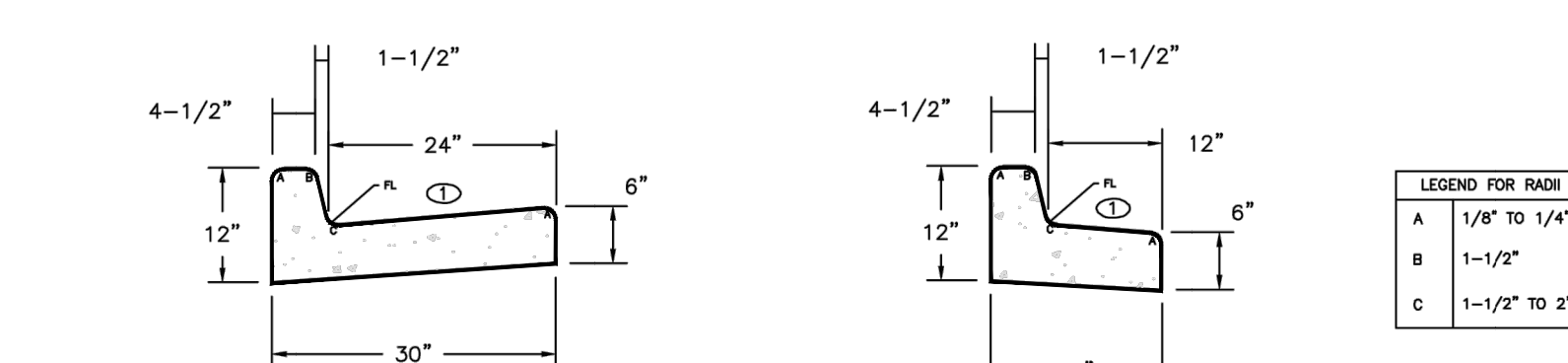
**PEDESTRIAN INTERSECTION RAMP (SD 2-41)**  
 SCALE: NTS



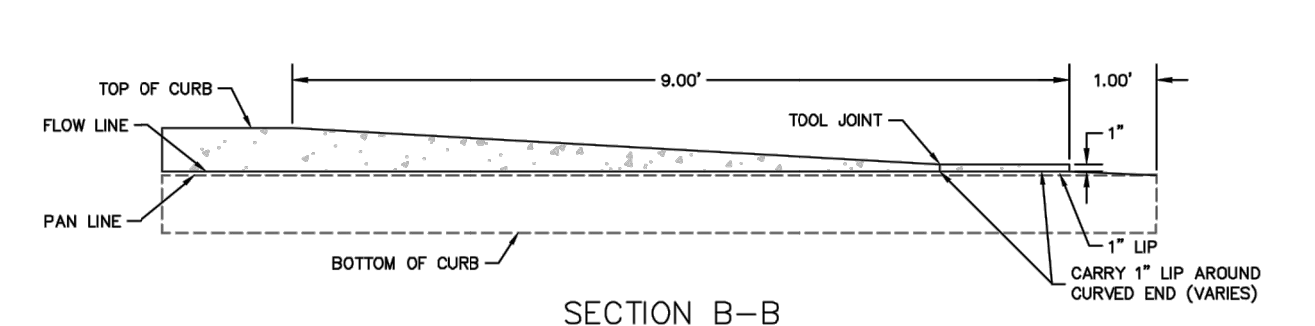
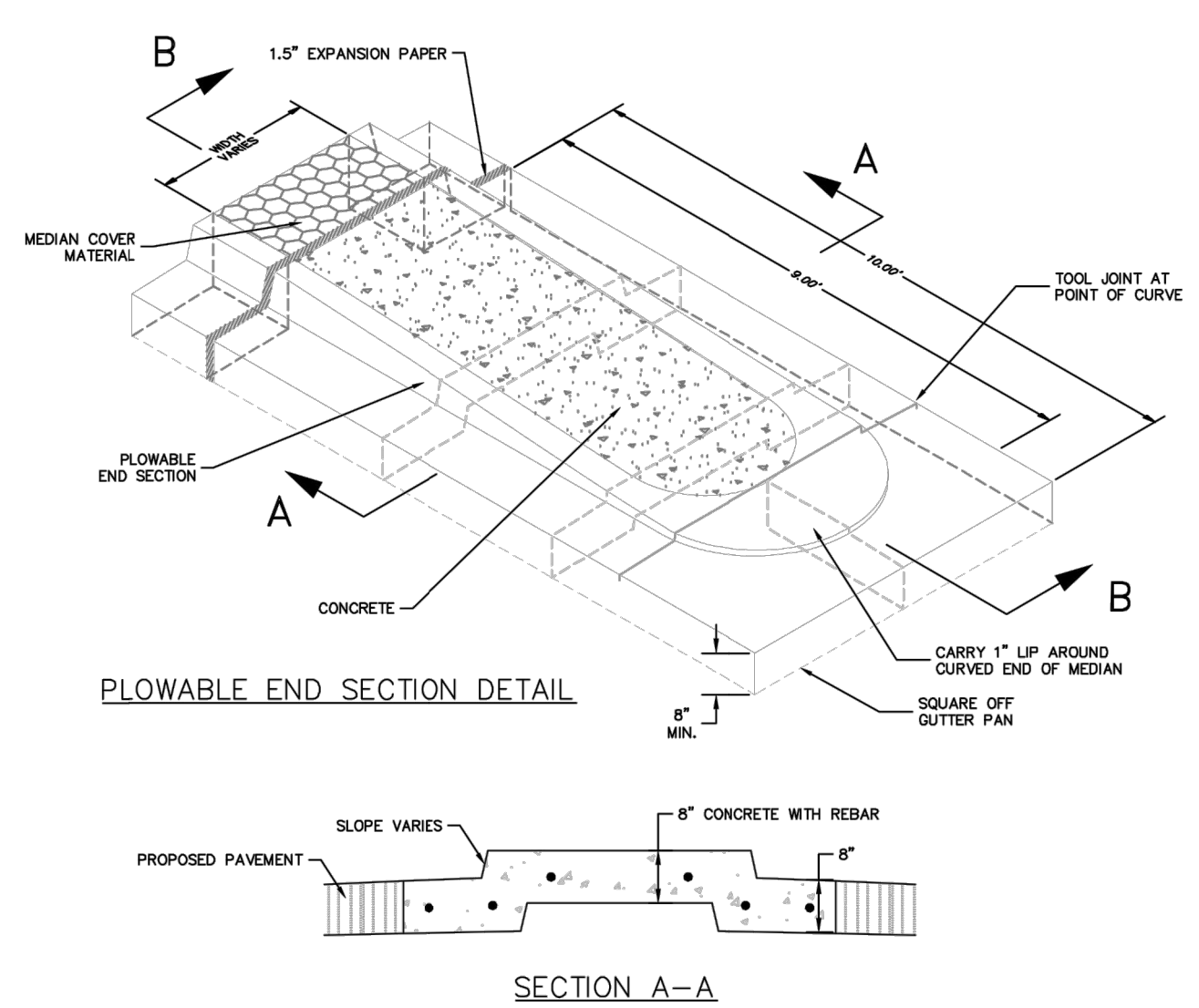
**PARALLEL PEDESTRIAN RAMP DETAIL (SD 2-50)**  
 SCALE: NTS



**ENGINEER'S STATEMENT**  
 STANDARD DETAILS SHOWN WERE REVIEWED ONLY AS TO THEIR APPLICATION ON THIS PROJECT.  
 Mike Bramlett  
 MIKE A. BRAMLETT, P.E.  
 COLORADO P.E. 32314  
 FOR AND ON BEHALF OF JR ENGINEERING, LOCAL ENGINEER  
 DATE 5/13/21  
 32314



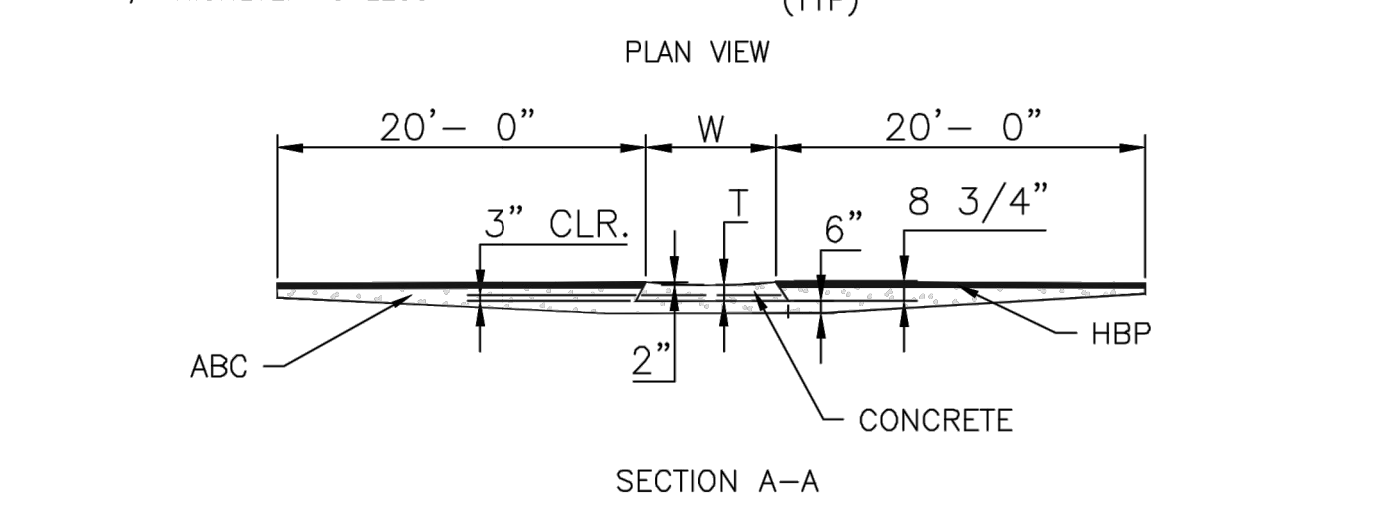
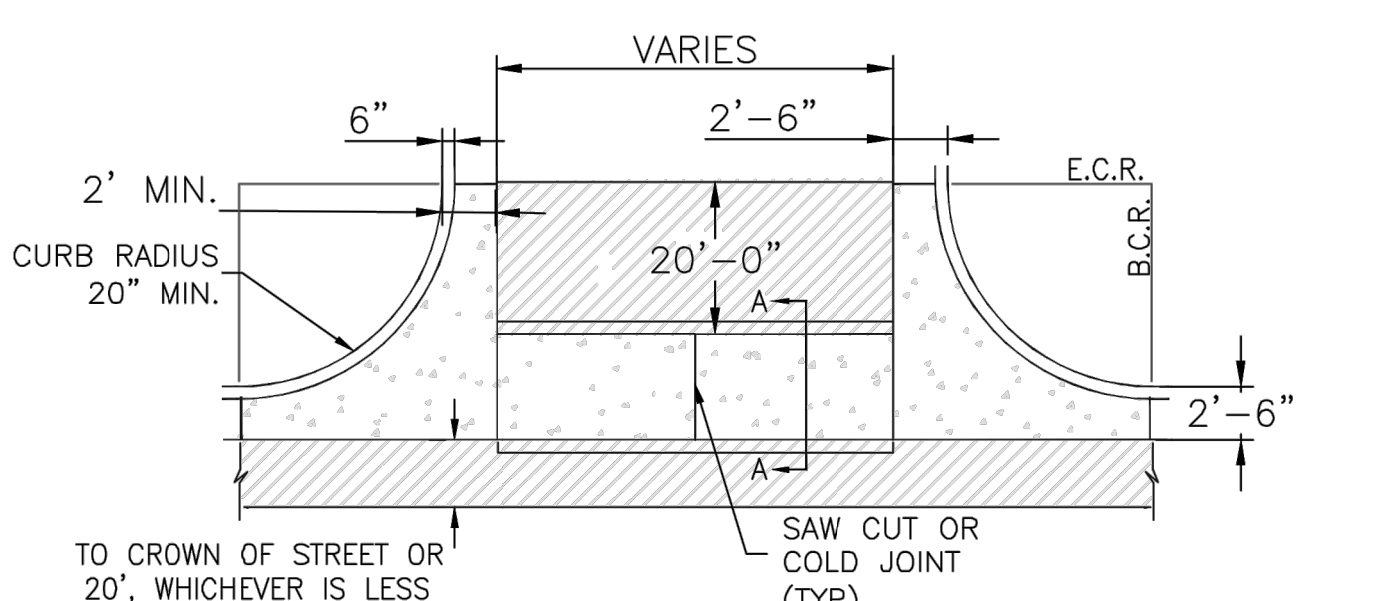
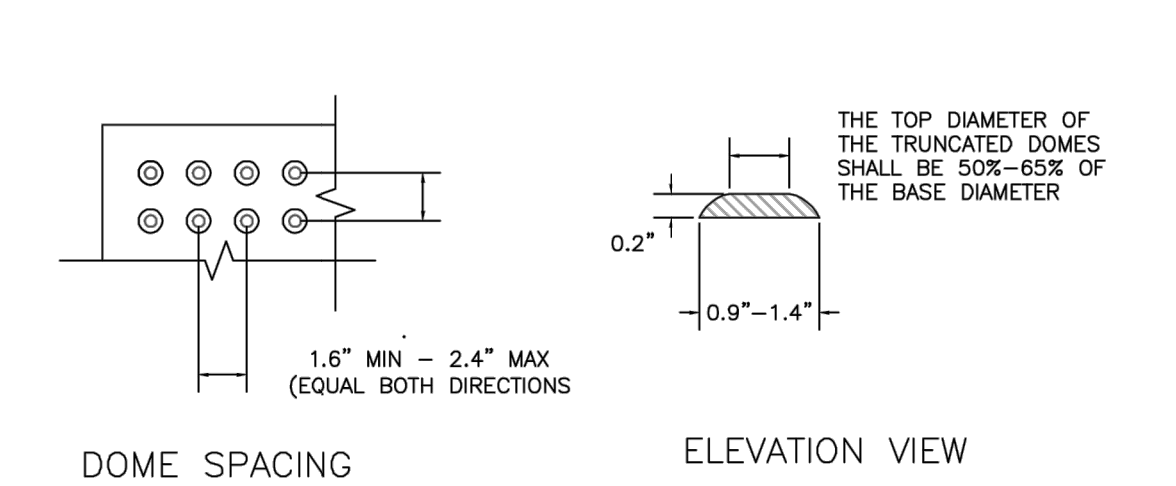
**TYPICAL CURB & GUTTER DETAILS DETAIL (SD 2-20)**  
 SCALE: NTS



- NOTES:**
- MEDIAN NOSE CONCRETE AND CURB & GUTTER SHALL BE PLACED MONOLITHIC WITH NON-COLORED CONCRETE REINFORCED #4 REBAR AT 18" E.W.
  - MEDIANS GREATER THAN 10' WIDE (BOC TO BOC) DO NOT REQUIRE MEDIAN NOSE.

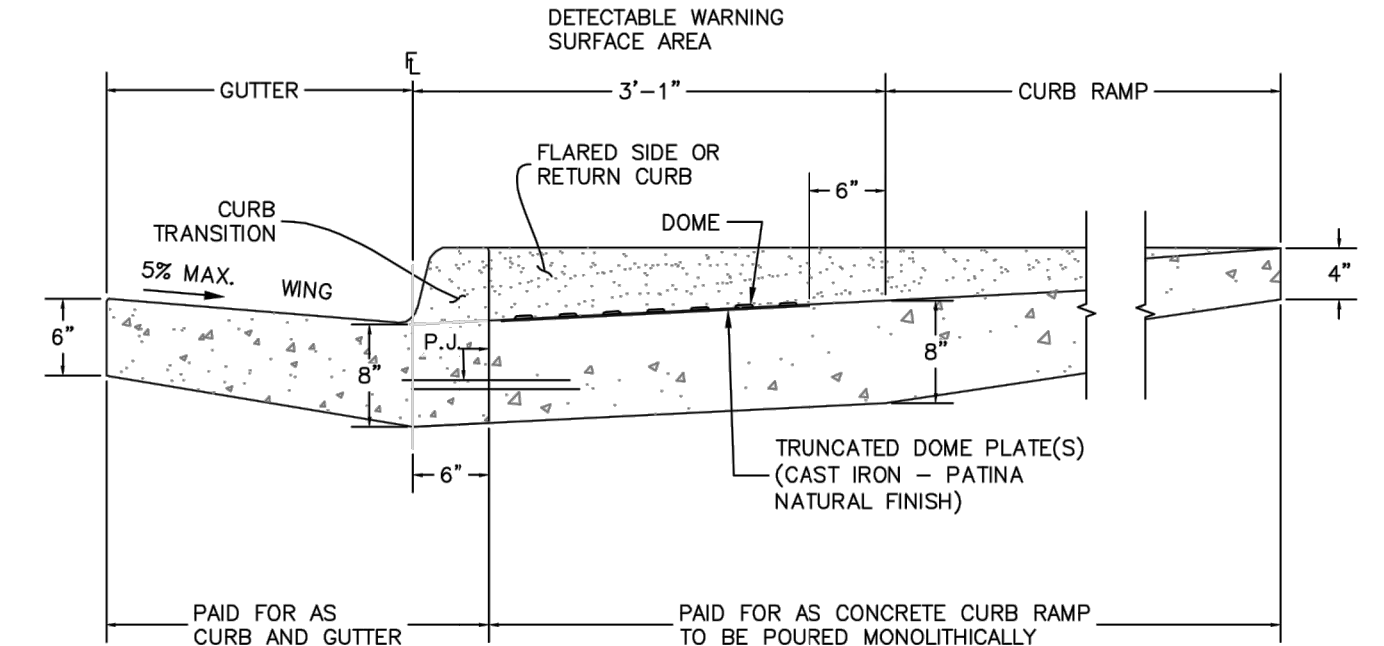
**PLOWABLE MEDIAN NOSE DETAIL (SD 2-22)**  
 SCALE: NTS

**TRUNCATED DOME DETAILS**



- NOTES**
- W - WIDTH SHALL BE 6' FOR LOCAL, 8' FOR COLLECTORS, AND 10' FOR ARTERIAL ROADS.
  - T - SQUARED-OFF RETURN TO BE POURED MONOLITHICALLY, 8" PCC FOR LOCAL ROADS, 9" FOR COLLECTORS WITH 6x6 - 4.4 W.W.F. OR #4 REINFORCING BAR @ 18" EACH WAY.
  - 3" = 3" MINIMUM ASPHALT DEPTH (2 LIFTS).
  - DESIGN TO SPECIFY ELEVATIONS AT PI AND PCR.

**TYPICAL CROSS PAN LAYOUT DETAIL (SD 2-26)**  
 SCALE: NTS



**DETECTABLE WARNING SURFACE DETAILS (SD 2-42)**  
 SCALE: NTS

UNTIL SUCH TIME AS THESE DRAWINGS ARE APPROVED BY THE APPROPRIATE REVIEWING AGENCIES, JR ENGINEERING APPROVES THEIR USE. THESE DRAWINGS ARE DESIGNATED BY WRITTEN AUTHORIZATION.

PREPARED FOR  
 SR LAND, LLC  
 20 BOULDER CRESCENT  
 SUITE 201  
 COLORADO SPRINGS, CO 80903  
 JAMES F. MORLEY (719) 471-1742

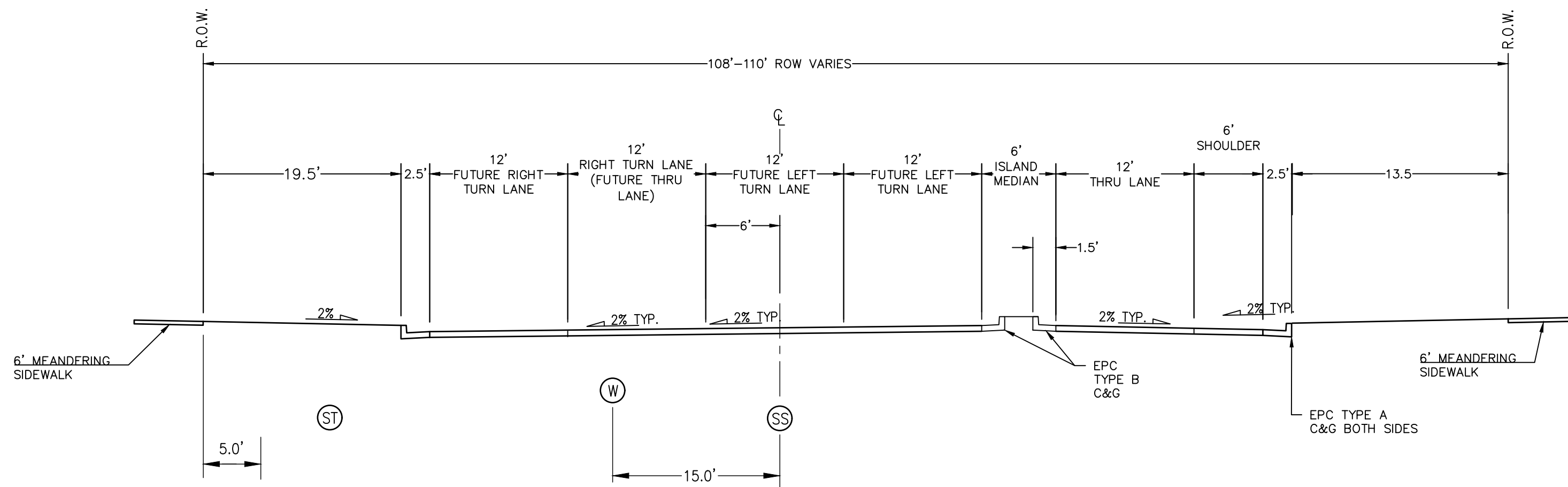
**J.R. ENGINEERING**  
 A Westman Company  
 Centennial 303-740-9988 • Colorado Springs 719-583-2693  
 Fort Collins 970-491-9988 • www.jrengineering.com

BY	DATE	NO.	REVISION

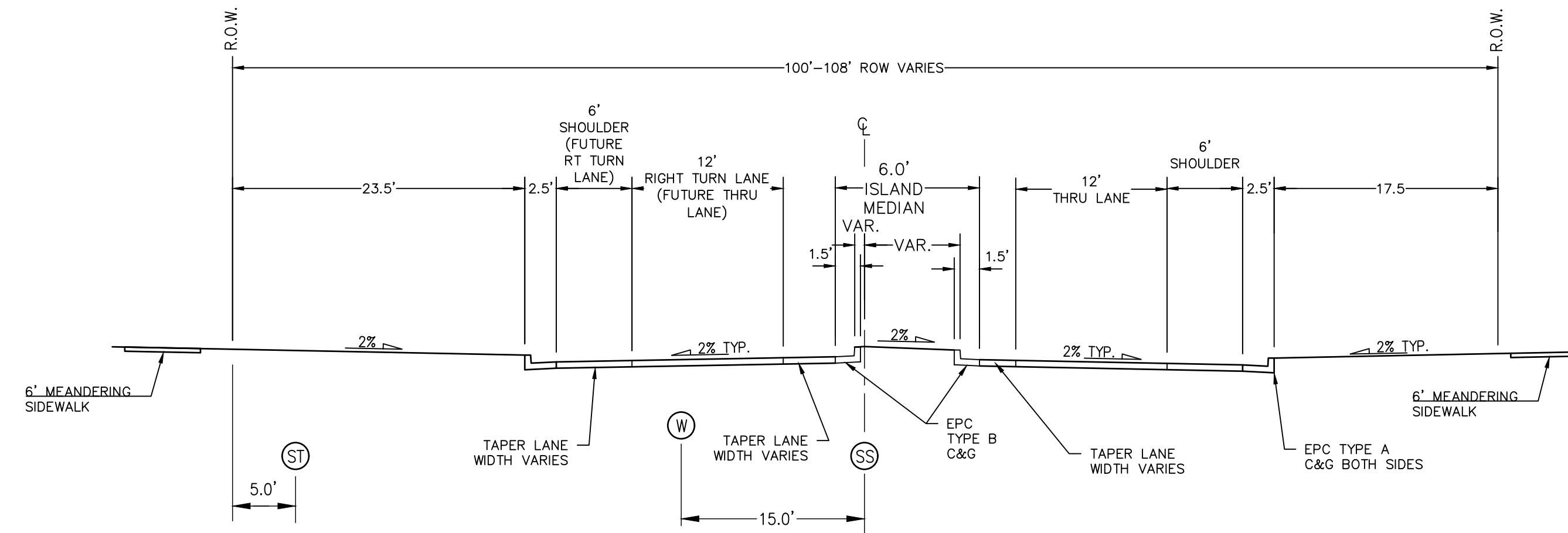
H-SCALE AS NOTED N/A  
 V-SCALE N/A  
 DATE 05/13/21  
 DESIGNED BY RAB  
 DRAWN BY KRW  
 CHECKED BY

STERLING RANCH - STERLING RANCH ROAD  
 NOTES AND DETAILS  
 SHEET 2 OF 7  
 JOB NO. 25188.01

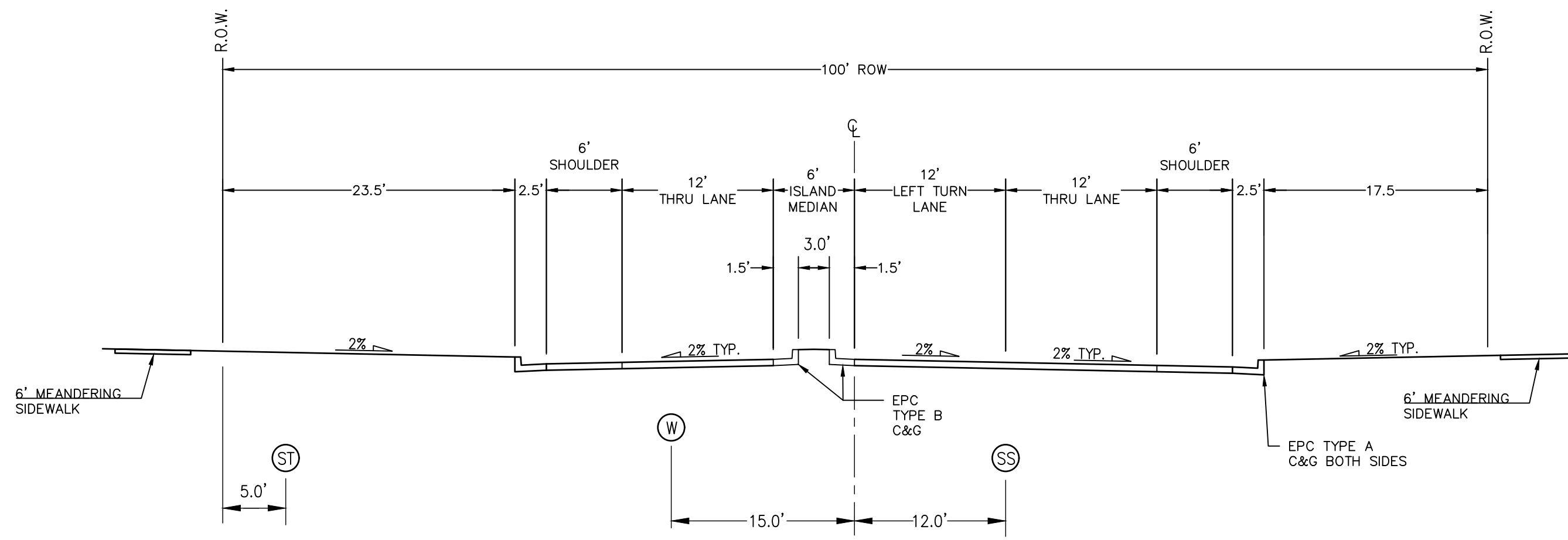




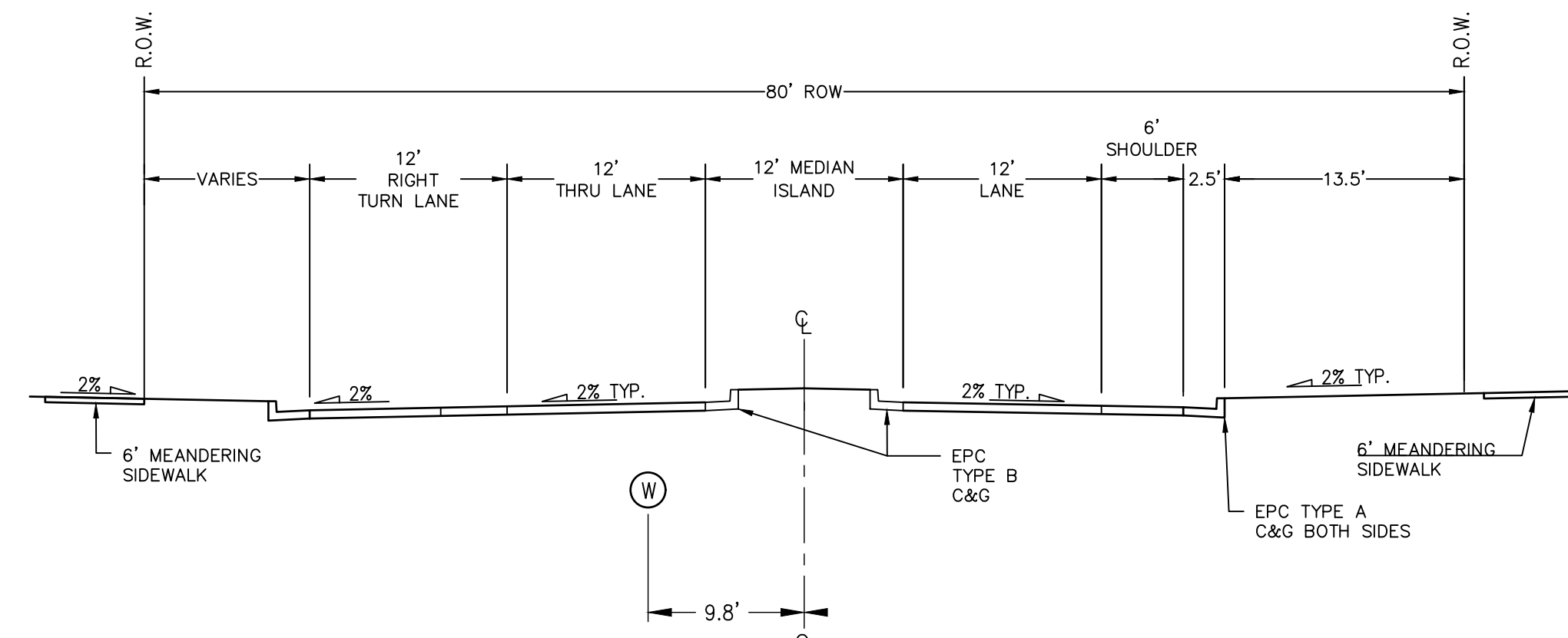
SECTION A  
STA 0+93 TO STA 3+70±  
SCALE: NTS



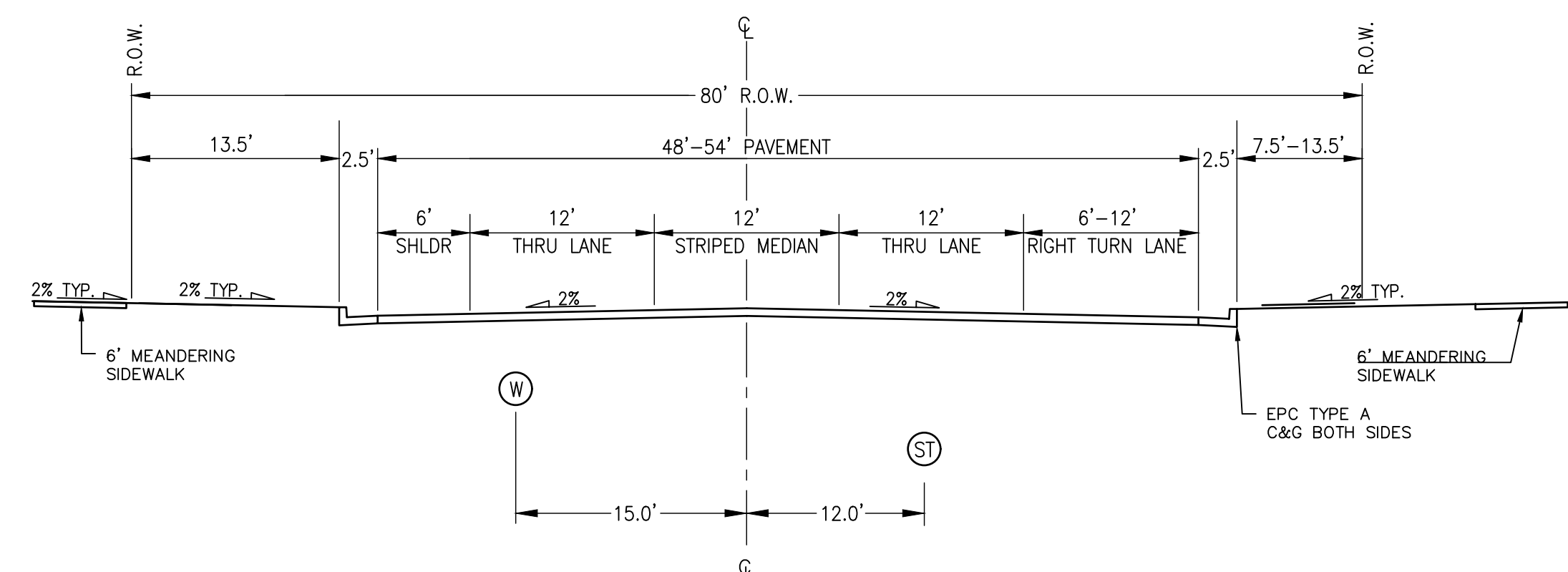
SECTION B  
STA 3+70± TO STA 4+60±  
SCALE: NTS



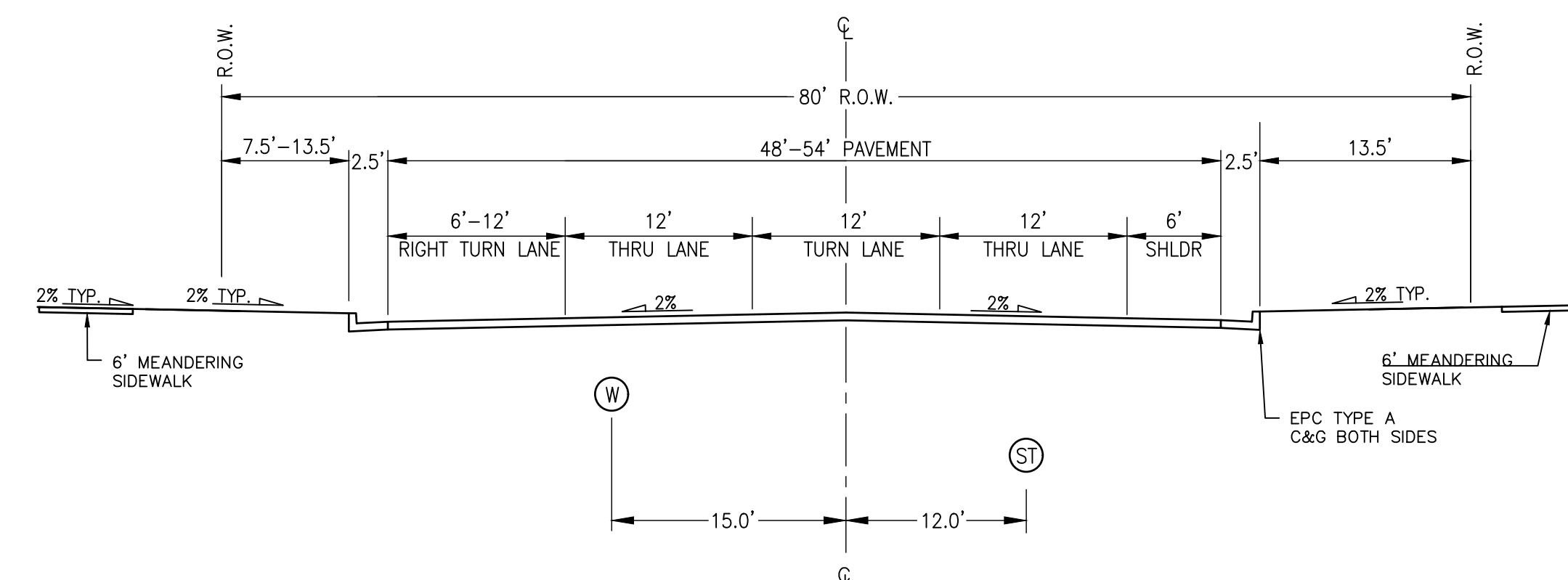
SECTION C  
STA 4+60± TO STA 6+13  
SCALE: NTS



SECTION D  
STA 7+14 TO STA 8+71  
SCALE: NTS



SECTION E  
STA 8+78 TO STA 14+72  
SCALE: NTS



SECTION F  
STA 15+72 TO STA 23+85  
SCALE: NTS

**NOTE**  
CONTRACTOR IS TO PHASE CONSTRUCTION TO ALWAYS PROVIDE A MINIMUM 16 FOOT WIDE EMERGENCY ACCESS TO VOLLMER

**ENGINEER'S STATEMENT**  
PREPARED UNDER MY DIRECT SUPERVISION AND ON BEHALF OF JR ENGINEERING  
*Mike A. Bramlett*  
MIKE A. BRAMLETT, P.E.  
COLORADO P.E. 32314  
FOR AND ON BEHALF OF JR ENGINEERING, INC.  
DATE: 5/26/21

UNTIL SUCH TIME AS THESE DRAWINGS ARE APPROVED BY THE APPROPRIATE REVIEWING AGENCIES, OR ENGINEERING APPROVES THEIR USE, THESE DRAWINGS ARE DESIGNATED BY WRITTEN AUTHORIZATION.  
PREPARED FOR  
SR LAND, LLC  
20 BOULDER CRESCENT  
SUITE 201  
COLORADO SPRINGS, CO 80903  
JAMES F. MORLEY  
(719) 471-1742

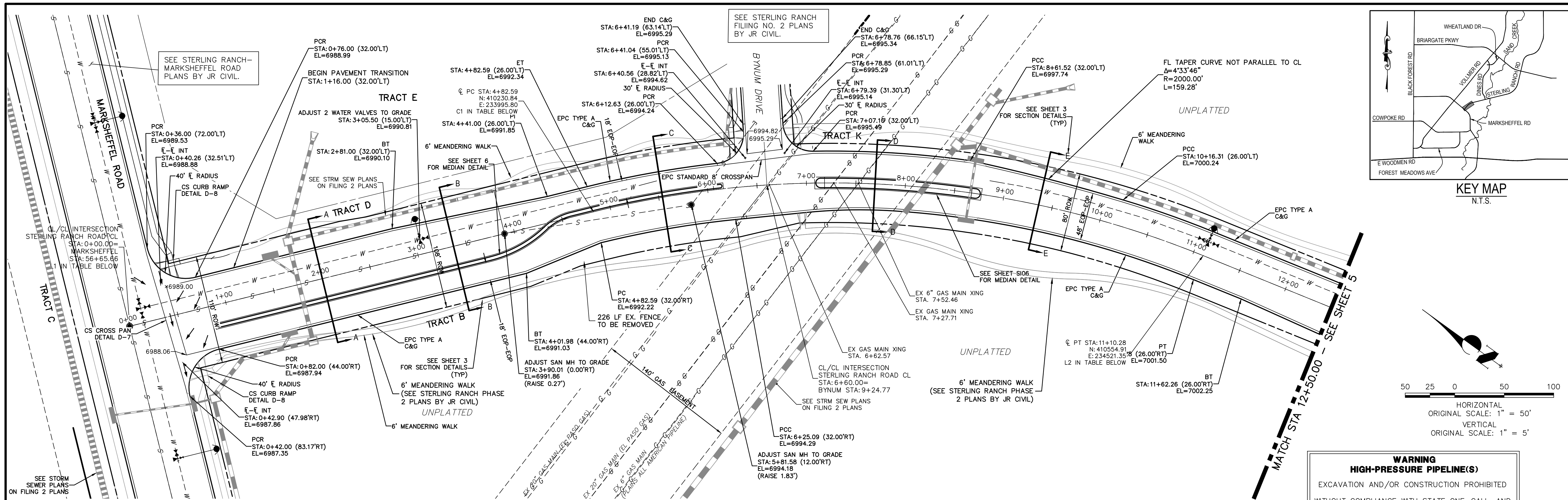
J.R. ENGINEERING  
A Westman Company  
Central 303-740-9888 • Colorado Springs 719-588-2583  
Fort Collins 970-491-9888 • www.jrengineering.com

BY	DATE	REVISION

H-SCALE	AS NOTED	DESIGNED BY	DRAWN BY	CHECKED BY
V-SCALE	N/A	RAB	KRW	
DATE	05/13/21			

STERLING RANCH -  
STERLING RANCH ROAD  
STREET SECTIONS  
SHEET 3 OF 7  
JOB NO. 25188.01

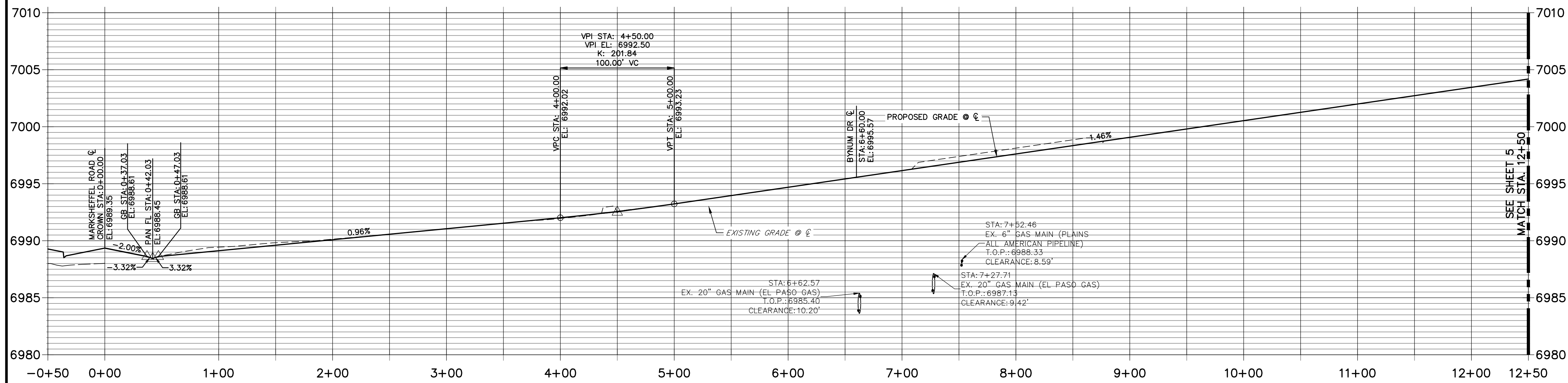




**STERLING RANCH ROAD  
STA 0+00.00 TO STA 12+50.00**

Sterling Ranch Road											
Point	Design Pt	Station	Distance	Bearing	Northing	Easting	Radius	Delta	Length	Tangent	
L1	Begin Line	0+00.00			409863.1034	233683.2862					
	End Line	4+82.59	482.594	N40° 21' 31.02"E	410230.8433	233995.7997					
C1	PC	4+82.59			410230.8433	233995.7997	1000	35°57'49"	627.69	324.57	
	PI	8+07.16			410478.1674	234205.9811					
	PT	11+10.28			410554.9149	234521.3464					

**STERLING RANCH ROAD CL PROFILE  
STA -0+50.00 TO 12+50.00**



**STERLING RANCH ROAD - STA 0+00.00 TO STA 12+50.00**

**WARNING  
HIGH-PRESSURE PIPELINE(S)**  
EXCAVATION AND/OR CONSTRUCTION PROHIBITED  
WITHOUT COMPLIANCE WITH STATE ONE-CALL, AND  
WITHOUT WRITTEN PERMISSION FROM  
MAGELLAN PIPELINE COMPANY, L.P.

**ENGINEER'S STATEMENT**  
PREPARED UNDER MY DIRECT SUPERVISION AND ON BEHALF OF JR ENGINEERING  
*Mike A. Bramlett*  
MIKE A. BRAMLETT, P.E.  
COLORADO P.E. 32314  
FOR AND ON BEHALF OF JR ENGINEERING, L.L.C. LOCAL ENGINEER  
DATE 5/26/21

UNTIL SUCH TIME AS THESE DRAWINGS ARE APPROVED BY THE APPROPRIATE REVIEWING AGENCIES, JR ENGINEERING APPROVES THEIR USE AS DESIGNATED BY WRITTEN AUTHORIZATION.

PREPARED FOR  
**SR LAND, LLC**  
20 BOULDER CRESCENT  
SUITE 201  
COLORADO SPRINGS, CO 80903  
JAMES F. MORLEY  
(719) 471-1742

**J.R. ENGINEERING**  
A Westman Company  
Central 303-740-9888 • Colorado Springs 719-588-2583  
Fort Collins 970-491-9888 • www.jrengineering.com

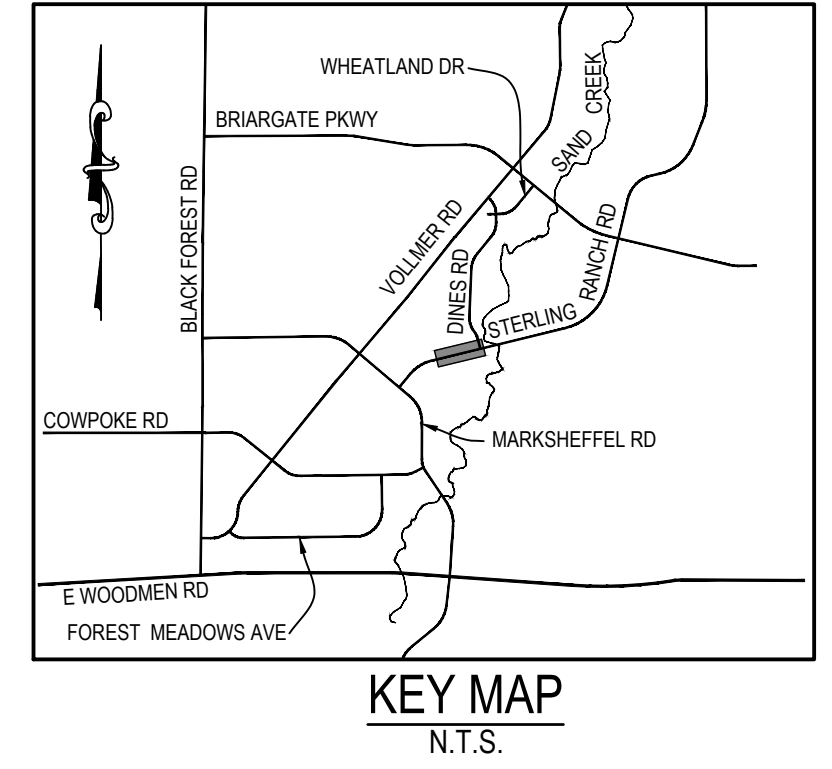
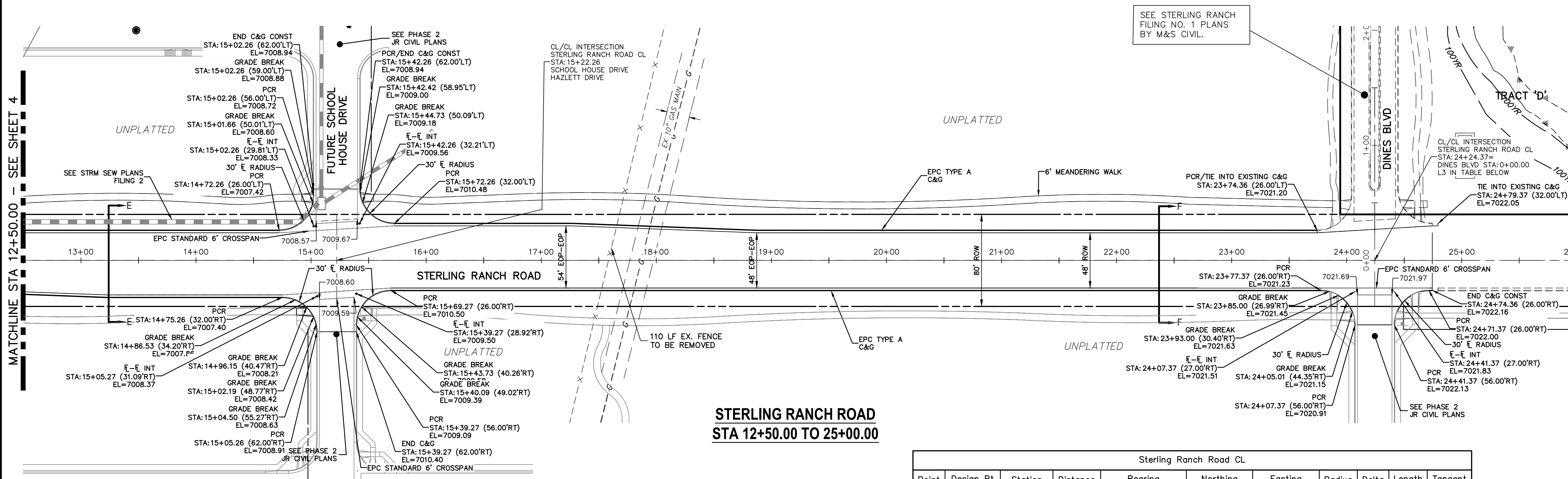
BY	DATE	REVISION

H-SCALE AS NOTED N/A  
V-SCALE 05/13/21  
DESIGNED BY RAB  
DRAWN BY RWK  
CHECKED BY

**STERLING RANCH ROAD -  
STERLING RANCH ROAD  
PLAN & PROFILE**

SHEET 4 OF 7  
JOB NO. 25188.01



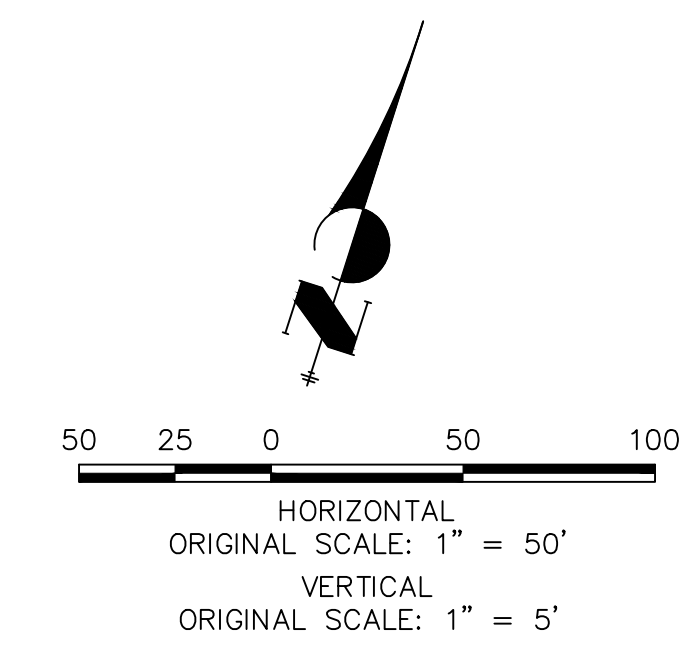


MATCHLINE STA 12+50.00 - SEE SHEET 4

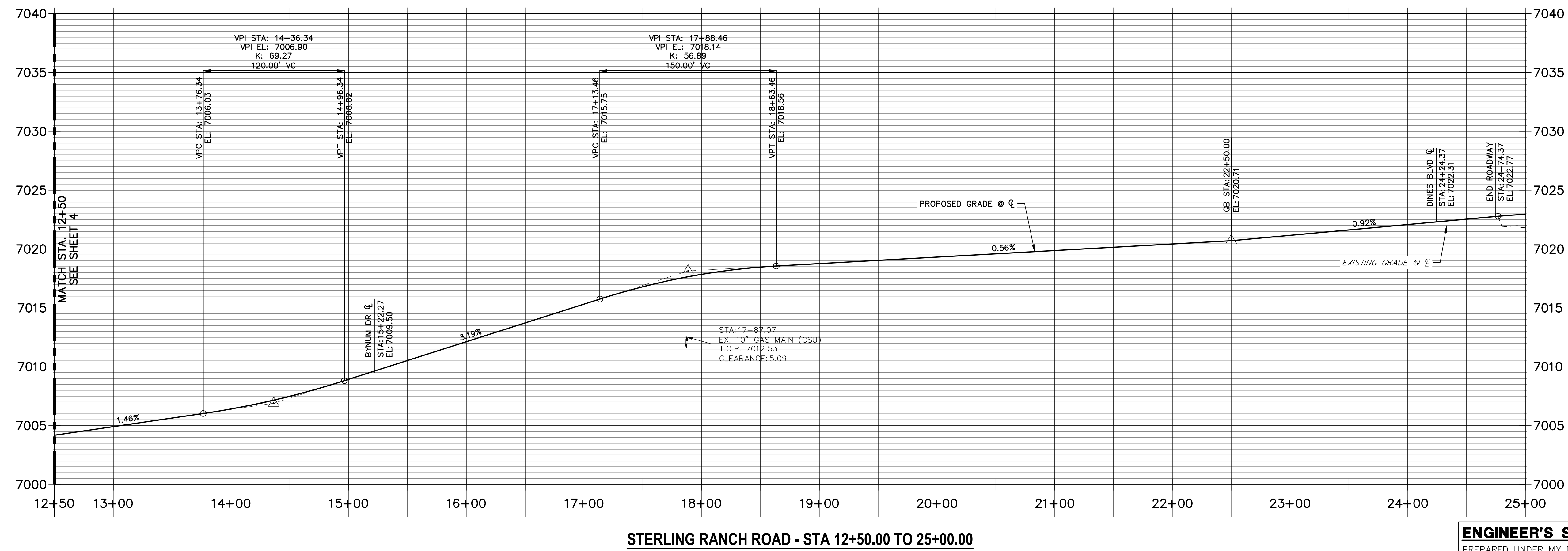
SEE STERLING RANCH FILING NO. 1 PLANS BY M&S CIVIL.

**STERLING RANCH ROAD  
STA 12+50.00 TO 25+00.00**

Sterling Ranch Road CL										
Point	Design Pt	Station	Distance	Bearing	Northing	Easting	Radius	Delta	Length	Tangent
L3	Begin Line	24+24.37	55.000	N76° 19' 20.39"E	410865.6429	235798.1664				
	End Line	24+79.37			410878.6482	235851.6067				
L8	Begin Line	24+79.37	1611.008	N76° 19' 20.39"E	410878.6482	235851.6067				
	End Line	40+90.37			411259.5863	237416.9290				



**STERLING RANCH ROAD CL PROFILE (2)  
STA 12+50.00 TO 25+00.00**



**STERLING RANCH ROAD - STA 12+50.00 TO 25+00.00**

UNTIL SUCH TIME AS THESE DRAWINGS ARE APPROVED BY THE AGENCIES, JR ENGINEERING APPROVES THEIR USES DESIGNATED BY WRITTEN AUTHORIZATION.

PREPARED FOR  
**SR LAND, LLC**  
20 BOULDER CRESCENT  
SUITE 201  
COLORADO SPRINGS, CO 80903  
JAMES F. MORLEY  
(719) 471-1742

**J.R. ENGINEERING**  
A Westman Company  
Central 303-740-9888 • Colorado Springs 719-583-2593  
Fort Collins 970-491-9888 • www.jrengineering.com

BY	DATE	REVISION

**STERLING RANCH ROAD  
PLAN & PROFILE**

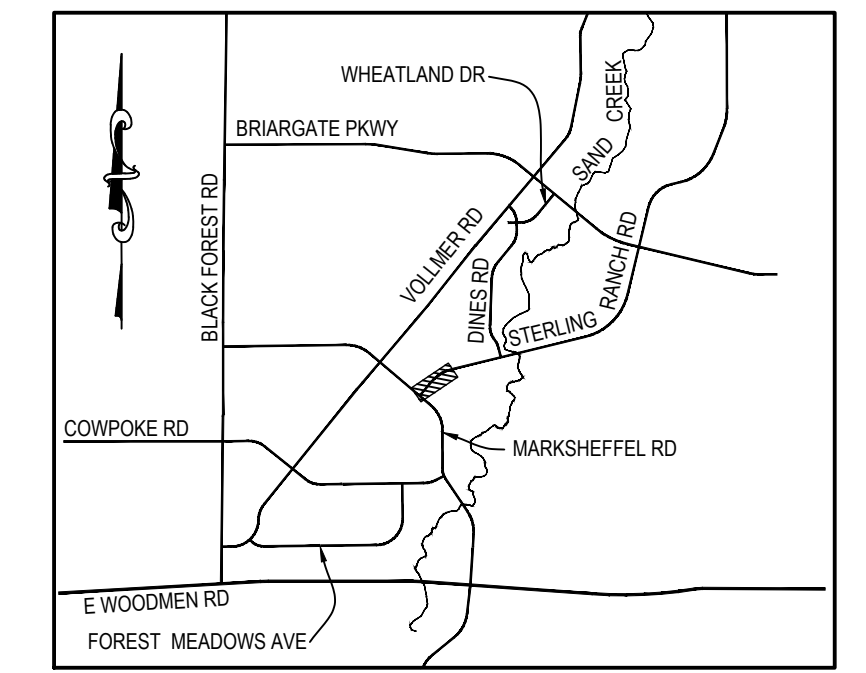
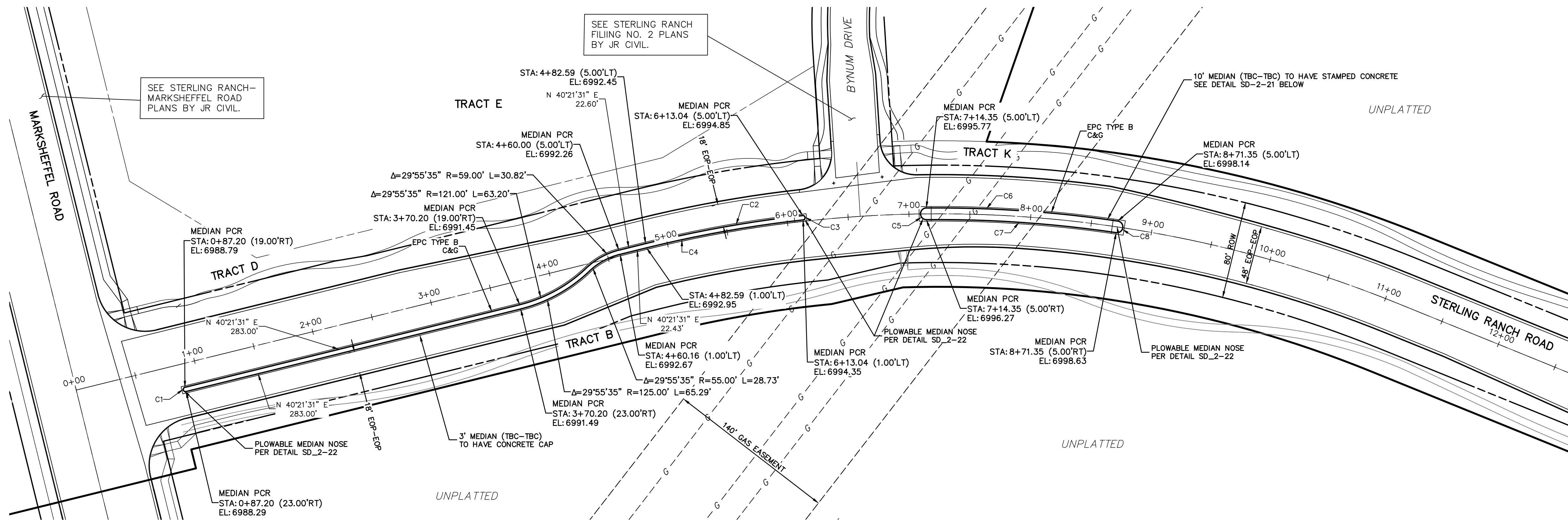
H-SCALE AS NOTED  
V-SCALE N/A  
DATE 05/13/21  
DESIGNED BY RAB  
DRAWN BY  
CHECKED BY

**ENGINEER'S STATEMENT**  
PREPARED UNDER MY DIRECT SUPERVISION AND ON BEHALF OF JR ENGINEERING

*Mike Bramlett*  
MIKE A. BRAMLETT, P.E.  
COLORADO P.E. 32314  
FOR AND ON BEHALF OF JR ENGINEERING

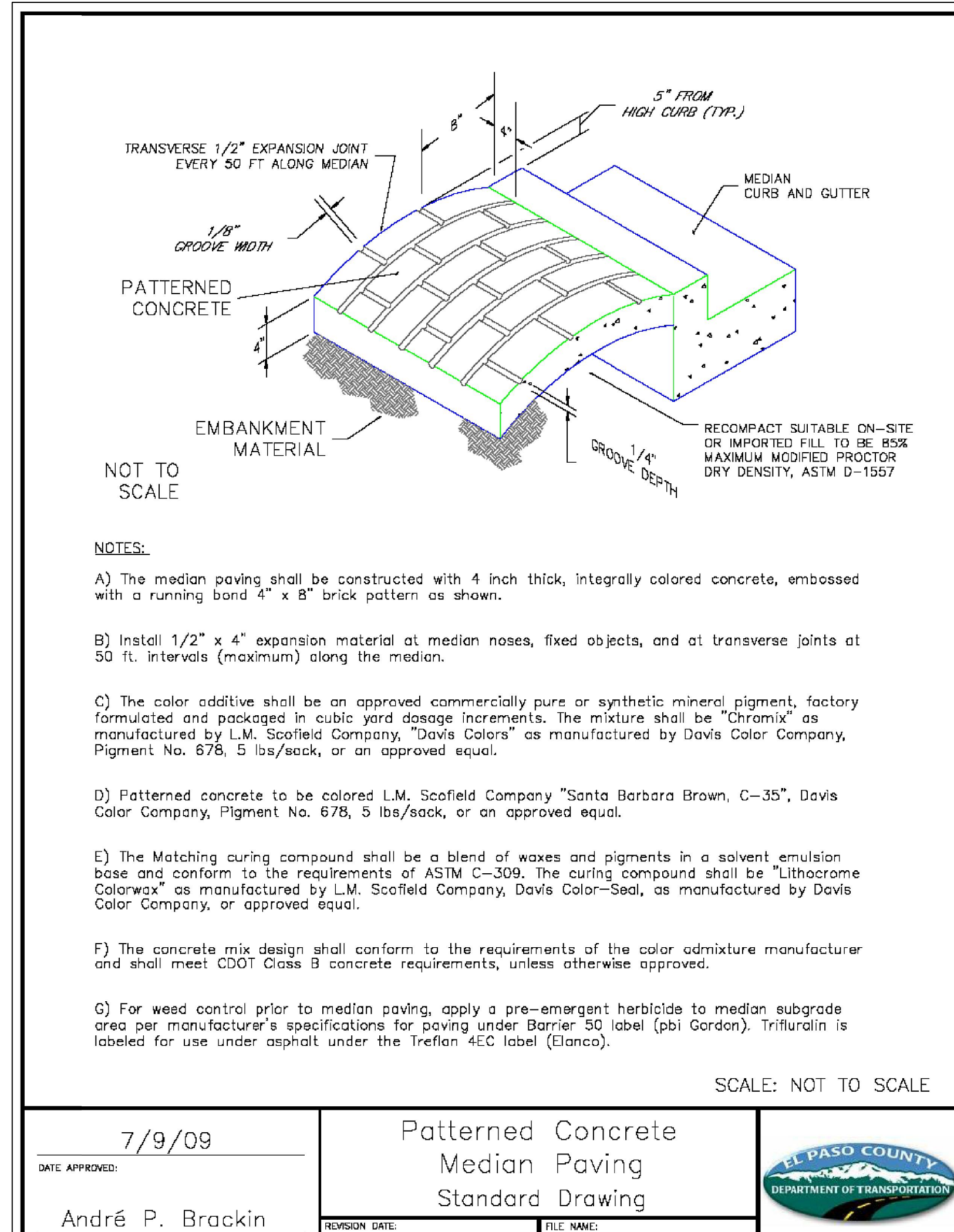
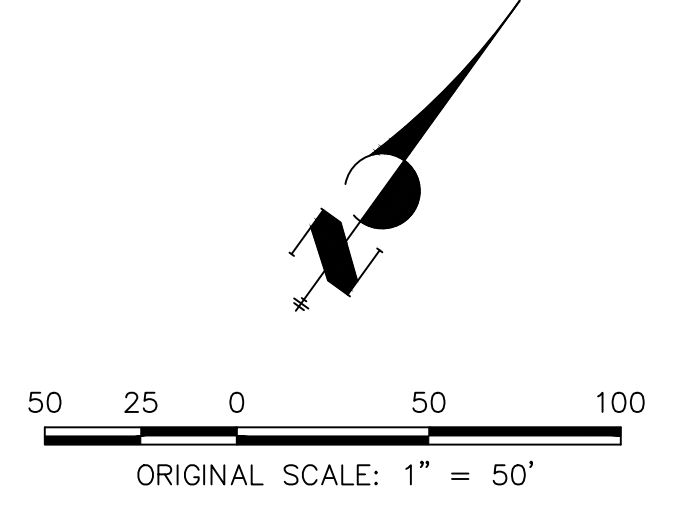
DATE 5/26/21





KEY MAP  
N.T.S.

STERLING RANCH ROAD - MEDIAN DETAILS



- NOTES:**
- The median paving shall be constructed with 4 inch thick, integrally colored concrete, embossed with a running band 4" x 8" brick pattern as shown.
  - Install 1/2" x 4" expansion material at median noses, fixed objects, and at transverse joints at 50 ft. intervals (maximum) along the median.
  - The color additive shall be an approved commercially pure or synthetic mineral pigment, factory formulated and packaged in cubic yard dosage increments. The mixture shall be "Chromix" as manufactured by L.M. Scofield Company, "Davis Colors" as manufactured by Davis Color Company, Pigment No. 678, 5 lbs./sack, or an approved equal.
  - Patterned concrete to be colored L.M. Scofield Company "Santa Barbara Brown, C-35", Davis Color Company, Pigment No. 678, 5 lbs./sack, or an approved equal.
  - The Matching curing compound shall be a blend of waxes and pigments in a solvent emulsion base and conform to the requirements of ASIM C-309. The curing compound shall be "Lithochrome Colorwax" as manufactured by L.M. Scofield Company, Davis Color-Seal, as manufactured by Davis Color Company, or approved equal.
  - The concrete mix design shall conform to the requirements of the color admixture manufacturer and shall meet CDOT Class B concrete requirements, unless otherwise approved.
  - For weed control prior to median paving, apply a pre-emergent herbicide to median subgrade area per manufacturer's specifications for paving under Barrier 50 label (phi Gordon). Trifluralin is labeled for use under asphalt under the Treflan 4EC label (Eltanco).

7/9/09  
DATE APPROVED: André P. Brackin

Patterned Concrete  
Median Paving  
Standard Drawing

EL PASO COUNTY  
DEPARTMENT OF TRANSPORTATION

CURVE	DELTA	RADIUS	LENGTH
C1	180°00'00"	2.00'	6.28'
C2	7°28'26"	1005.00'	131.10'
C3	180°00'00"	2.00'	6.28'
C4	7°35'23"	985.75'	130.58'
C5	180°00'00"	5.00'	15.71'
C6	8°59'44"	1005.00'	157.79'
C7	8°59'44"	995.00'	156.22'
C8	180°00'00"	5.00'	15.71'

**ENGINEER'S STATEMENT**  
 PREPARED UNDER MY DIRECT SUPERVISION AND ON BEHALF OF JR ENGINEERING  
  
 MIKE A. BRAMLETT, P.E.  
 COLORADO P.E. 32314  
 FOR AND ON BEHALF OF JR ENGINEERING, INC.  
 DATE: 5/26/21

UNTIL SUCH TIME AS THESE DRAWINGS ARE APPROVED BY THE APPROPRIATE REVIEWING AGENCIES, JR ENGINEERING APPROVES THEIR USES DESIGNATED BY WRITTEN AUTHORIZATION.

PREPARED FOR  
**SR LAND, LLC**  
 20 BOULDER CRESCENT  
 SUITE 201  
 COLORADO SPRINGS, CO 80903  
 JAMES F. MORLEY  
 (719) 471-1742

**J.R. ENGINEERING**  
 A Westman Company  
 Centennial 303-740-9888 • Colorado Springs 719-583-2593  
 Fort Collins 970-491-9888 • www.jrengineering.com

BY	DATE	REVISION

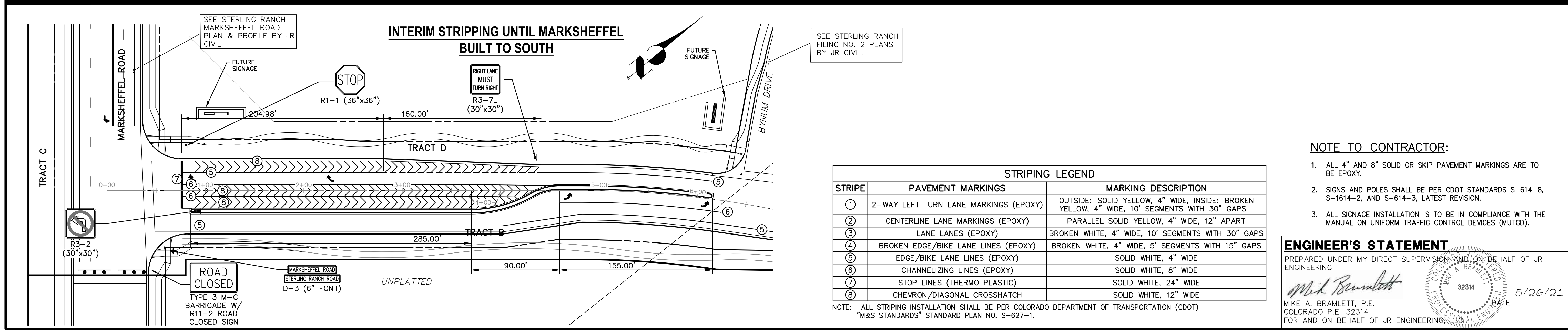
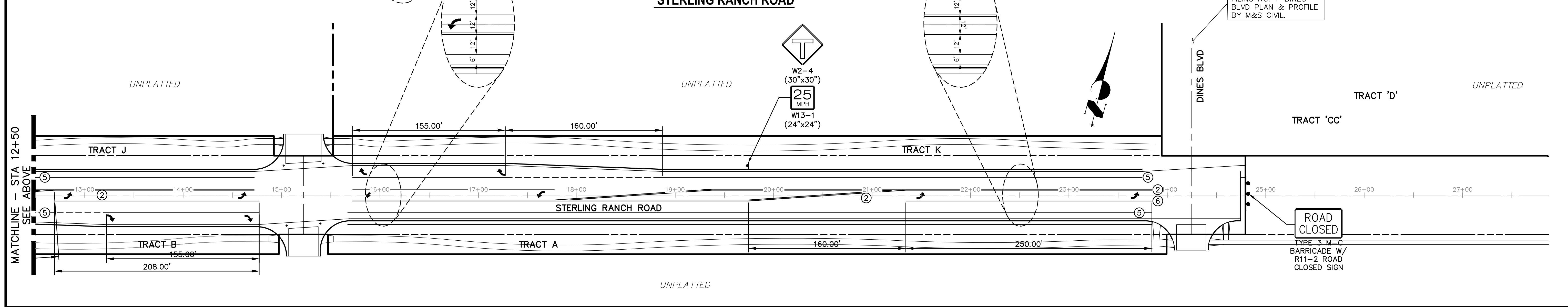
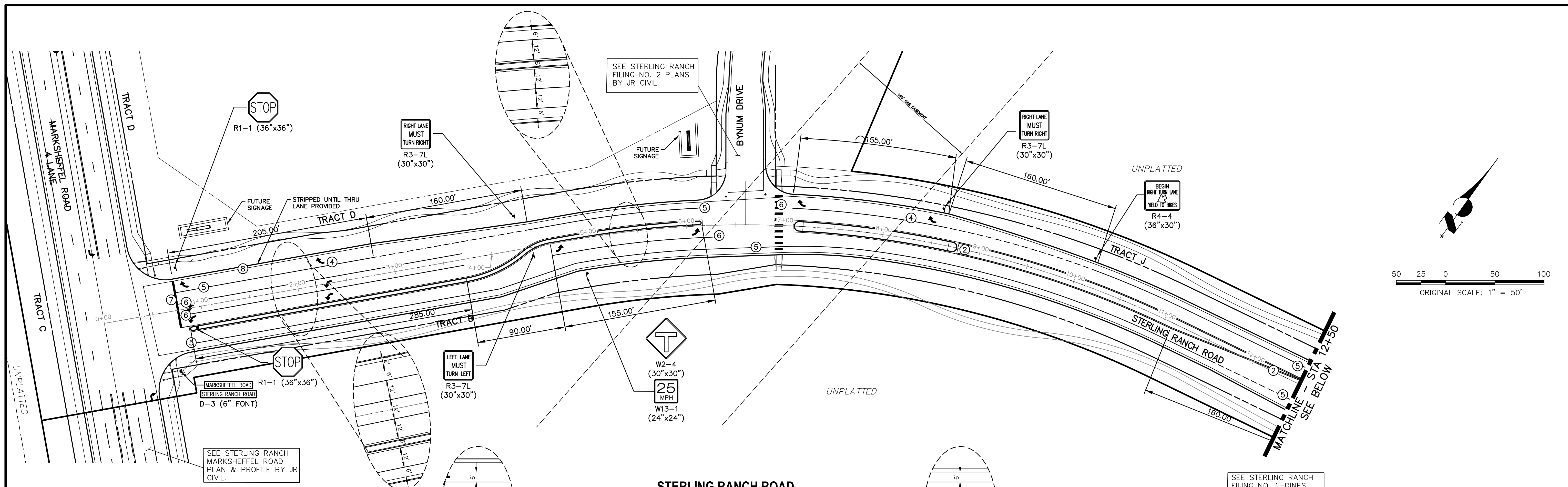
STERLING RANCH -  
 STERLING RANCH ROAD  
 MEDIAN DETAILS

DESIGNED BY: RAB  
 DRAWN BY: KRW  
 CHECKED BY: [Blank]

DATE: 05/13/21

SHEET 6 OF 7  
 JOB NO. 25188.01





STRIPING LEGEND		
STRIPE	PAVEMENT MARKINGS	MARKING DESCRIPTION
①	2-WAY LEFT TURN LANE MARKINGS (EPOXY)	OUTSIDE: SOLID YELLOW, 4" WIDE, INSIDE: BROKEN YELLOW, 4" WIDE, 10' SEGMENTS WITH 30" GAPS
②	CENTERLINE LANE MARKINGS (EPOXY)	PARALLEL SOLID YELLOW, 4" WIDE, 12" APART
③	LANE LANES (EPOXY)	BROKEN WHITE, 4" WIDE, 10' SEGMENTS WITH 30" GAPS
④	BROKEN EDGE/BIKE LANE LINES (EPOXY)	BROKEN WHITE, 4" WIDE, 5' SEGMENTS WITH 15" GAPS
⑤	EDGE/BIKE LANE LINES (EPOXY)	SOLID WHITE, 4" WIDE
⑥	CHANNELIZING LINES (EPOXY)	SOLID WHITE, 8" WIDE
⑦	STOP LINES (THERMO PLASTIC)	SOLID WHITE, 24" WIDE
⑧	CHEVRON/DIAGONAL CROSSHATCH	SOLID WHITE, 12" WIDE

**NOTE TO CONTRACTOR:**

- ALL 4" AND 8" SOLID OR SKIP PAVEMENT MARKINGS ARE TO BE EPOXY.
- SIGNS AND POLES SHALL BE PER CDOT STANDARDS S-614-8, S-1614-2, AND S-614-3, LATEST REVISION.
- ALL SIGNAGE INSTALLATION IS TO BE IN COMPLIANCE WITH THE MANUAL ON UNIFORM TRAFFIC CONTROL DEVICES (MUTCD).

**ENGINEER'S STATEMENT**

PREPARED UNDER MY DIRECT SUPERVISION AND ON BEHALF OF JR ENGINEERING

*Mike A. Bramlett*

MIKE A. BRAMLETT, P.E.  
 COLORADO P.E. 32314  
 FOR AND ON BEHALF OF JR ENGINEERING, LLC

DATE: 5/26/21

UNTIL SUCH TIME AS THESE DRAWINGS ARE APPROVED BY THE AGENCIES, JR ENGINEERING APPROVES THEIR USES DESIGNATED BY WRITTEN AUTHORIZATION.

PREPARED FOR  
 SR LAND, LLC  
 20 BOULDER CRESCENT  
 SUITE 201  
 COLORADO SPRINGS, CO 80903  
 JAMES F. MORLEY  
 (719) 471-1742

**J.R. ENGINEERING**  
 A Westman Company

Centennial 300-740-0888 • Colorado Springs 719-583-2583  
 Fort Collins 970-491-9888 • www.jrengineering.com

BY	DATE	REVISION

H-SCALE	AS NOTED	N/A
V-SCALE	05/13/21	RAB
DESIGNED BY	RWB	CHECKED BY

STERLING RANCH -  
 STERLING RANCH ROAD  
 SIGNAGE & STRIPING

SHEET 7 OF 7

JOB NO. 25188.01