

A

PCD FILE # PPR-22-059





NOTES:

1. WASTE DISPOSAL BIN LOCATIONS ARE TBD AND WILL BE ADDED TO THE SWMP ONCE DETERMINED BY THE CONTRACTOR.
2. ONSITE LOCATION OF THE SWMP IS TBD AND WILL BE ADDED TO THE SWMP ONCE DETERMINED BY THE CONTRACTOR.
3. THE NEED FOR DEWATERING IS NOT ANTICIPATED, IN THE EVENT THAT DEWATERING BECOMES NECESSARY THE CONTRACTOR, WITH INPUT FROM THE COUNTY STORMWATER INSPECTOR, WILL DESIGN THE LOCATIONS OF DIVERSION, PUMP & DISCHARGES.
4. SPARSE GRASSES AND VEGETATION COVER 100% OF THE SITE.
5. NO CONCRETE OR ASPHALT BATCH PLANTS WILL BE UTILIZED ONSITE.



**Know what's below.
Call before you dig.**

CALL 3-BUSINESS DAYS IN ADVANCE BEFORE YOU DIG, GRADE, OR EXCAVATE FOR THE MARKING OF UNDERGROUND MEMBER UTILITIES.



DREXEL, BARRELL & CO.
Engineers • Surveyors
3 SOUTH 7TH STREET
COLORADO SPGS, COLORADO 80905

PCD FILE # PPR-22-059

GRADING & EROSION CONTROL PLAN

NOT FOR
CONSTRUCTION

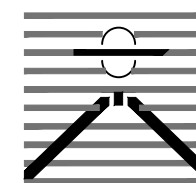
**FALCON SHERIFF
SUBSTATION**
12072 Royal County Down Rd., Falcon, Colorado 80831

**INITIAL GRADING & EROSION
CONTROL PLAN**

SHEET
IDENTIFICATION
EC1



- NOTES:
1. WASTE DISPOSAL BIN LOCATIONS ARE TBD AND WILL BE ADDED TO THE SWMP ONCE DETERMINED BY THE CONTRACTOR.
 2. EXISTING LOCATION OF THE SWMP IS TBD AND WILL BE ADDED TO THE SWMP ONCE DETERMINED BY THE CONTRACTOR.
 3. THE NEED FOR DEWATERING IS NOT ANTICIPATED. IN THE EVENT THAT DEWATERING BECOMES NECESSARY THE CONTRACTOR, WITH INPUT FROM THE COUNTY STORMWATER INSPECTOR, WILL DESIGN THE LOCATIONS OF DIVERSION, PUMP & DISCHARGES
 4. SPOT ELEVATIONS ARE CURB FLOWLINE UNO.



Know what's **below**.
Call before you dig

CALL 3—BUSINESS DAYS IN ADVANCE BEFORE YOU DIG, GRADE, OR EXCAVATE FOR THE MARKING OF UNDERGROUND MEMBER UTILITIES

DREXEL, BARRELL & CO.
Engineers • Surveyors
3 SOUTH 7TH STREET
COLORADO SPGS, COLORADO 80905
PCD FILE # PPR-22-059

SHEET
IDENTIFICATION
EC2

El Paso County Sheriff's Department
**FALCON SHERIFF
SUBSTATION**
12072 Royal County Down Rd. Falcon, Colorado 80831

GRADING & EROSION CONTROL PLAN

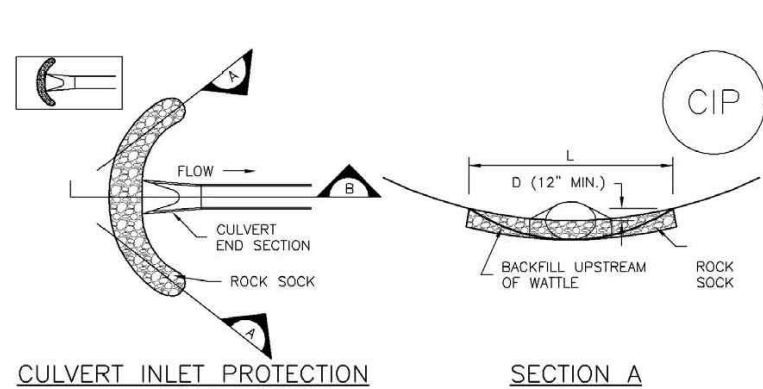
NOT FOR
CONSTRUCTION

DESIGN BY: KGV	D2C PROJECT NUMBER	ISSUE DATE: AUGUST 28, 2023		
		CONSULTANTS PROJECT # 21653-00 CSCV	SOLICITATION NO.:	
	DRAWN BY: Author	CKG BY: Checker	PLOT DATE:	
	SBMT BY: Approver		CONTRACT NO.:	
	PLOT SCALE: 1"=30'		FILE NUMBER:	
	SIZE: 27" x 34"	FILE NAME:		

[illegible]

EC2

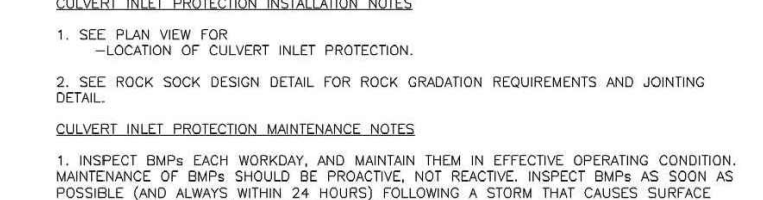
SC-6 Inlet Protection (IP)



KEY IN ROCK SOCK 0" ON BEDROCK,
KEY IN ROCK SOCK 2" ON EARTH

SECTION B

CIR-1 CULVERT INLET PROTECT

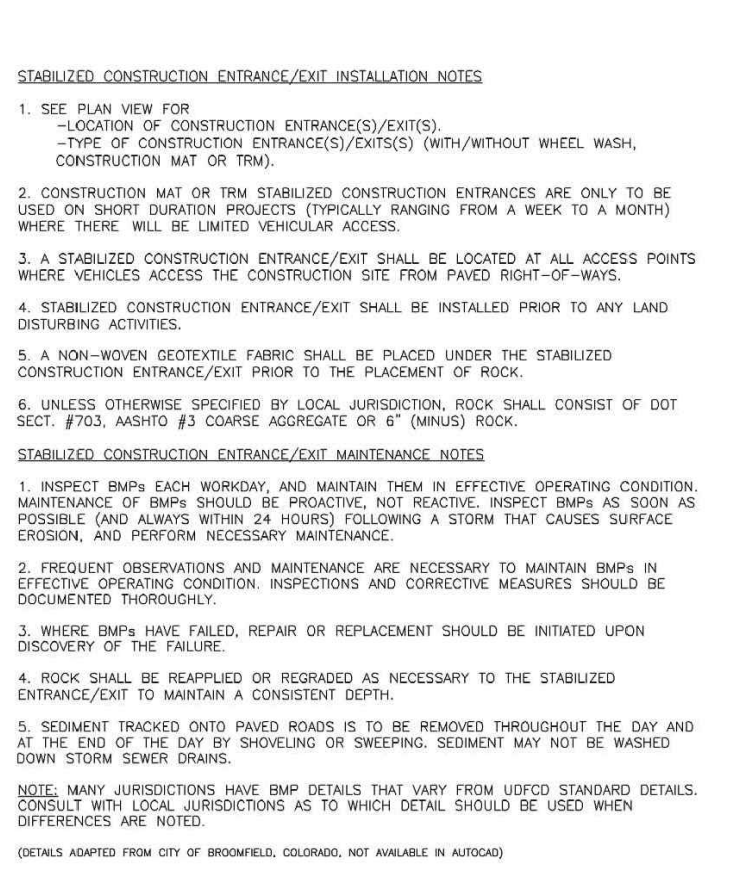


2. FREQUENT OBSERVATIONS AND MAINTENANCE ARE NECESSARY TO KEEP THE SYSTEM IN EFFECTIVE OPERATING CONDITION. INSPECTIONS AND CORRECTIVE MEASURES SHOULD BE DOCUMENTED THOROUGHLY.

3. WHERE BMPs HAVE FAILED, REPAIR OR REPLACEMENT SHOULD BE DISCOVERY OF THE FAILURE.
4. SEDIMENT ACCUMULATED UPSTREAM OF THE CULVERT SHALL BE REMOVED TO A SEDIMENT DEPTH IS $\frac{1}{2}$ THE HEIGHT OF THE ROCK SOCK.
5. CULVERT INLET PROTECTION SHALL REMAIN IN PLACE UNTIL THE UPLAND AREA IS PERMANENTLY STABILIZED AND APPROVED BY THE LOCAL JURISDICTION.

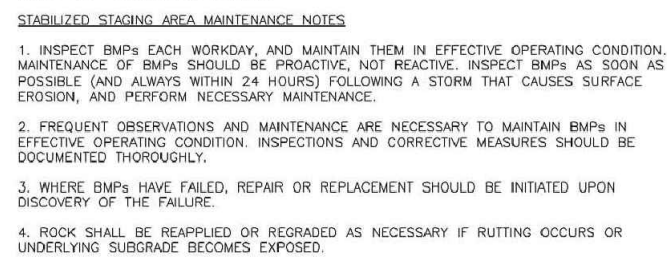
(DETAILS ADAPTED FROM AURORA, COLORADO, NOT AVAILABLE IN AUTOCAD)

IP-8	Urban Drainage and Flood Control District Urban Storm Drainage Criteria Manual Volume 3	August 2013
------	--	-------------

SM-4 Vehicle Tracking Control (VTC)

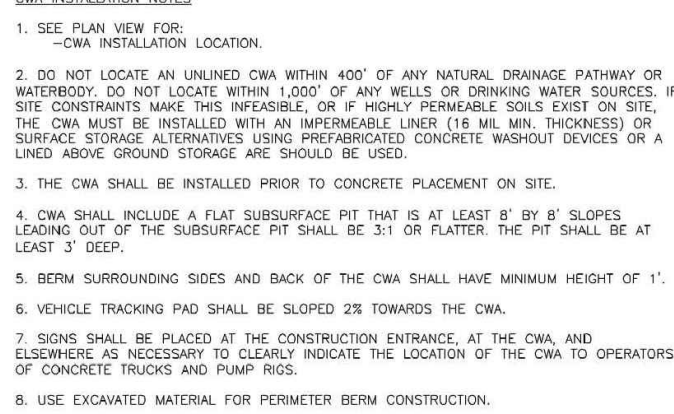
VTC-6	Urban Drainage and Flood Control District	November 2010
	Urban Storm Drainage Criteria Manual Volume 3	

Concrete Washout Area (CWA)



CWA-4
Urban Drainage and Flood Control District
November 2010

Urban Storm Drainage Criteria Manual Volume 3

[illegible]

CWA-4
Urban Drainage and Flood Control District
November 2010

Urban Storm Drainage Criteria Manual Volume 3

NATIVE SEEDING MIX

SOIL PREPARATION, FERTILIZER, SEEDING, MULCHING AND MULCH TACKIFIER WILL BE REQUIRED FOR DISTURBED AREAS EXCLUDING THE RIGHT-OF-WAYS.

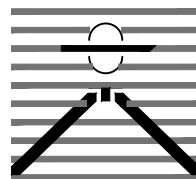
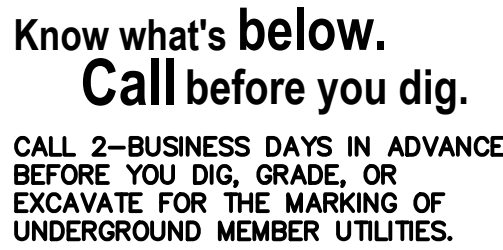
THE FOLLOWING TYPES AND RATES SHALL BE USED:

COMMON NAME	SCIENTIFIC NAME	LBS PLS/ACRE
SAND BLUESTEM V. ELIDA	ANDROPOGON HALLII	2.0
WESTERN WHEATGRASS V. ARRIBA	PASPOGONY SMITHII	7.0
SIDEOTS GRAMA V. VAUGHN	BOUTELOUA CURTIPENDULA	4.0
GALLETA V. VIVA (CARYOPIS)	HILARIA JAMESII	1.0
TITLE BLUESTEM V. PASTURA	SCHIZACHYRIUM SCOPARIUM	2.0
PRARIE SANDREED V. GASHEN	CALAMOVILFA LONGIFOLIA	3.0
SWITCHGRASS V. NEBR 28	PANICUM VIRGATUM	1.0
BLANKETFLOWER	GALLARDIA ARISTATA	1.0
PRARIE CONEFLOWER	RATBIDA COLUMINIFERA	0.5
BLUE FLAX	LINUM LEWISII	1.0
OATS	AVENA SATIVA	3.0
WINTER WHEAT	TRITICUM AESTIVUM	3.0
TOTAL/POUNDS/ACRE		28.5

FERTILIZER	RATE PER ACRE
NITROGEN	27
PHOSPHORUS (P205)	69

SEEDING APPLICATION: DRILL SEED 0.25"-0.5" INTO TOPSOIL. AREA NOT ACCESSIBLE TO A DRILL SEEDER AND SLOPES STEEPER THAN 2:1 SHALL BE HAND BROADCAST AT DOUBLE THE ABOVE SEED RATE AND RAKED AT 1/4 TO 1/2 INTO THE TOPSOIL.

MULCHING APPLICATION: 1 1/2 TONS CERTIFIED WEED FREE NATIVE HAY PER ACRE
MECHANICALLY CRIMED IN TOPSOIL IN COMBINATION WITH AN ORGANIC MULCH
TACKIFIER.



DREXEL, BARRELL & CO.
Engineers • Surveyors
3 SOUTH 7TH STREET
COLORADO SPGS, COLORADO 80902

PCD FILE # PPR-22-059

D2C ARCHITECTS, INC
DENVER, COLORADO
COPYRIGHT © YYYY

THESE DRAWINGS AND PLANS ARE
COPYRIGHTED AND ARE NOT TO BE USED
OR REPRODUCED WHOLLY OR IN PART
WITHOUT THE WRITTEN PERMISSION OF
D2C ARCHITECTS, INC.

[illegible]

ISSUE DATE:	AUGUST 28, 2023
CONSULTANTS PROJECT #	121653-00 CSCV
SOLICITATION NO.:	
CONTRACT NO.:	
FILE NUMBER:	

NOT FOR
CONSTRUCTION

El Paso County Sheriff's Department
**FALCON SHERIFF
SUBSTATION**
12072 Royal County Down Rd. Falcon, Colorado 80831

EROSION CONTROL DETAILS

**SHEET
IDENTIFICATION
DT2**