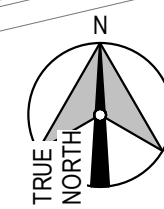
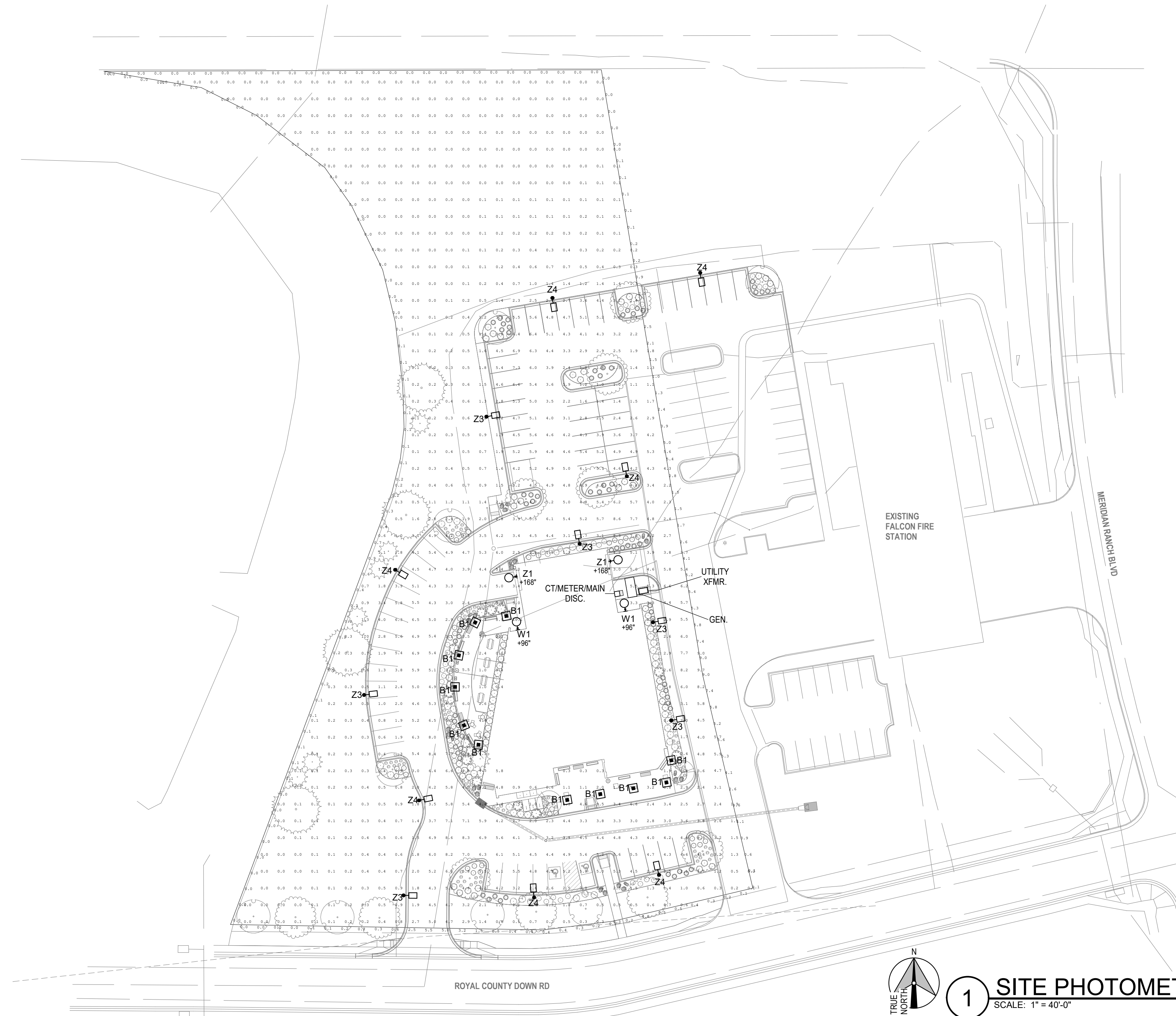


D

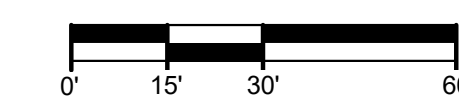
C

B

A



1 SITE PHOTOMETRIC
SCALE: 1" = 40'-0"



MARKS	DATE	APPROVAL
1	12.12.2023	SDP - Second Review Submittal

DESIGN BY: Designer	ISSUE DATE: AUGUST 28, 2023
D2C PROJECT NUMBER 202207	CONSULTANT'S PROJECT #
DRAWN BY: Aldan	CHECK BY: Aldan
SEAL BY: Approver	PILOT DATE: 8/23/2023
PILOT SCALE: 1" = 40'-0"	FILE NUMBER:
SIZE: 22" x 34"	FILE NAME:

SITE DEVELOPMENT PLAN

NOT FOR CONSTRUCTION

El Paso County Sheriff's Department
Falcon - Sheriff Substation
12072 Royal County Down Rd, Falcon, Colorado 80831
SITE PHOTOMETRIC

SHEET IDENTIFICATION
SDP-11
SHEET 11 OF 13

SDP-11-

SLING Micro Strike

AREA/SITE/ROAD LIGHTER

FEATURES

- Compact sleek design with multiple LED configurations and simple installation
- The SLING includes a universal mounting block for easy pole installation or mast arm option for 2-3/8" R OD roadway brackets
- Capable of replacing up to 1000w HD luminaires
- Micro Strike optical distributions of Type 2, 3, 4W or 5W
- Tool-less entry option for easy installation and maintenance
- 15G rated for high vibration applications including bridges and overpasses

DATE: _____ LOCATION: _____
 TYPE: Z3, Z4 PROJECT: El Paso Substation
 CATALOG #: EXO-ASL1-160L-135-3K7-3/4W-U ON A 17" SQUARE POLE



CONTROL TECHNOLOGY



SPECIFICATIONS

CONSTRUCTION

- Die-cast housing with hidden vertical heat fins that are optimal for heat dissipation while keeping a clean smooth outer surface
- Corrosion resistant, die-cast aluminum housing with powder coat paint finish
- Separate optical and electrical compartment for improved thermal management and optimum component operation
- TGC thermostat polyester powder paint finish applied at nominal 2.5 mil thickness

OPTICS

- Entire optical aperture illuminates to create a larger luminous surface area resulting in a low glare appearance without sacrificing optical performance
- Premium engineered individual acrylic lenses deliver ES Type 2, 3, 4W and 5W distributions
- Lens distributions are field rotatable (in 90° increments) or exchangeable for job site fine-tuning
- 300K, 400K, or 500K (70 CR) CCT
- 80, 160, or 320 midpower LEDs
- 300K, 400K or 500K (70 CR) CCT
- Zero uplight at 0 degrees of tilt
- Field rotatable optics

INSTALLATION

- Tool-less entry to wiring/driver compartment optional
- Universal mounting block works with #2 drill pattern
- Fixture ships with slotted mounting block to accommodate wide range of drill patterns for easy retrofit opportunities
- Mast arm filter accessory or option available for 2-3/8" OD brackets with vertical tilt of +3°, 0° or -3°

ELECTRICAL

- Universal 120-277 VAC or 347-480 VAC input voltage, 50/60 Hz
- Ambient operating temperature -40° C to 40° C
- Drivers have greater than 90% power factor and less than 20% THD
- LED drivers have output power over-voltage, over-current protection and short circuit protection with auto recovery
- Field replaceable surge protection device provides 20KA and 30KV protection meeting ANSI/IEEE C62.41.2 Category C High and Surge Location Category C3. Automatically takes future off-line for protection when device is consumed

CONTROLS

- Photo control, occupancy sensor and Zigbee wireless available for complete on/off and dimming control
- 7-pin ANSI C136.41-2013 photocontrol receptacle option available for twist lock photocontrols or wireless control modules (control accessories sold separately)
- Dimming Drivers are standard and dimming leads are extended out of the luminaire unless control options require connection to the dimming leads. Must specify if wiring leads are to be greater than the 6'
- NX Lighting Controls™ available with in fixture wireless control module, features dimming and occupancy sensor
- wISCAPE® available with in fixture wireless control module, features dimming and occupancy sensor via 7-pin
- Please consult brand or sales representative when combining control and electrical options as some combinations may not operate as anticipated depending on your application

CERTIFICATIONS

- Listed to UL 5085 and CSA C22.2#250.0-24 for wet locations and 40°C ambient temperatures
- DLC (DesignLights Consortium Qualified) with some Premium Qualified configurations. Please refer to the DLC website for specific product qualifications at www.designlights.org
- 15G rated for ANSI C136.31 high vibration applications
- IP65 optical assembly
- Meets IDA recommendations using 3K CCT configuration at 0 degrees of tilt
- This product qualifies as a "designated country construction material" per FAR 52.225-11 Buy American-Construction Materials under Trade Agreements effective 04/23/2020.

WARRANTY

- 5 Year warranty

KEY DATA	
Lumen Range	3,200-36,000
Wattage Range	25-255
Efficacy Range (LPW)	118-148
Weight lbs. (kg)	14.5-17.5 (6.6-8.0)

SLING Micro Strike

AREA/SITE/ROAD LIGHTER

ORDERING GUIDE

Example: ASL1-80L-50-3K7-2-UNV-ASQU-BLT-7PRM0-40F

Series	# LEDs	CCT/CRI	Distribution	Rotation/Orientation	Voltage	Mounting
ASL1 ASL MicroStrike Series	80L-25	2,500 lm	2 Type 1	L Optic rotation left	120 120V	ASQ3 Universal Mount
	80L-39	4,500 lm	3 Type 1	R Optic rotation right	208 208V	A3 AS with 3.5-4.13" OD RPA3 & U
	80L-50	6,000 lm	4W Type 4W		240 240V	A4 AS with 4.18-5.25" OD RPA4 & U
	160L-70	9,000 lm	5W Type 5W		277 277V	A5 AS with 5.54-6.5" OD RPA5 & U
	160L-100	12,000 lm			347 347V	MAF Mast Arm Filter for 2-3/8" OD
160L-155	16,000 lm			480 480V		
ASL2 ASL MicroStrike Series	320L-145	21,000 lm				
	320L-170	24,000 lm				
	320L-185	27,000 lm				
	320L-210	30,000 lm				
	320L-235	33,000 lm				
320L-255	35,000 lm					

Control Options Network	Options	Color
NXSPW30P ¹ NX Wireless, PIR Occupancy Sensor, Dimming Daylight Harvesting, 30' use white for WH, black for DB, GT, TT, gray for LG, PS	F Fusing	BLT Black Matte Textured
NXSP30P ¹ NX, PIR Occupancy Sensor, Dimming Daylight Harvesting, 30' use white for WH, black for DB, GT, TT, gray for LG, PS	BC Backlight Control	BLS Black Gloss Smooth
NXU1 ¹ NX1 Networked Wireless Radio Module, NXP2 and Bluetooth Programming, without Sensor	TB Terminal Block	DBT Dark Bronze Matte Textured
Standard Sensors	TE Toolless Entry	DBS Dark Bronze Gloss Smooth
SCR-8P1 ¹ Remote control programmable line voltage sensor	SSF Stainless Steel Fasteners	GTT Graphite Matte Textured
SCR-40P1 ¹ Remote control programmable line voltage sensor		LGS Light Grey Gloss Smooth
Control Options Other		LGT Light Grey Matte Textured
7PR 7 Pin Receptacle		PSS Platinum Silver Smooth
7PR-SC 7 Pin Receptacle with shunting cap		WHT White Matte Textured
7PR-MDBF 7 Pin Receptacle with low voltage sensor at 8' mounting for external control accessory		WHS White Gloss Smooth
7PR-MD40F 7 Pin Receptacle with low voltage sensor at 40' mounting for external control accessory		VGT Verde Green Textured
7PR-RL 7 Pin Receptacle with Photocontrol		
ADD Auto-Dim timer based dimming		Color Options
ADT Auto-Dim time of day dimming		CC Custom Color
Sensors		
BTS_F Bluetooth Programmable, PIR Occupancy/Daylight Sensor, 360° lens		
BTSO_F Bluetooth Programmable, PIR Occupancy/Daylight Sensor, 360° lens, up to 12' mounting height ¹		

Notes:
 1 Not compatible with 80L configurations
 2 Not compatible with 480V configurations
 3 Mast specify voltage
 4 Not available with a combination of 347-480 and fusing
 5 Mast specify voltage, 120V or 277V only
 6 Order at least one SP-REMOTE per project location to program and control the occupancy sensor
 7 Replaces "L" with "TR" for up to 14' mounting height, "40P" for 15-40' mounting height
 8 Replaces "L" with "TR" for up to 12' mounting height

D2C ARCHITECTS, INC.
DENVER, COLORADO
COPYRIGHT © YYYY
 THESE DRAWINGS AND PLANS ARE
COPYRIGHTED AND ARE NOT TO BE USED
OR REPRODUCED WHOLLY OR IN PART
WITHOUT THE WRITTEN PERMISSION OF
D2C ARCHITECTS, INC.

NO.	DATE	DESCRIPTION	MARKS
1	12.12.2022	SDP - Second Review Submittal	

DESIGN BY: Designer D2C PROJECT NUMBER 202207	ISSUE DATE: AUGUST 28, 2023 CONSULTANT'S PROJECT #	DRAWN BY: AutoCAD CHECKER	PILOT DATE: 8/23/2023	FILE NAME:
DATE: 8/23/2023	CONTRACT NO.:	PILOT SCALE:	PILOT DATE:	PILOT SCALE:
PILOT SCALE:	PILOT DATE:	PILOT SCALE:	PILOT DATE:	PILOT SCALE:

SITE DEVELOPMENT PLAN

NOT FOR CONSTRUCTION

El Paso County Sheriff's Department
Falcon - Sheriff Substation
 12072 Royal County Down Rd, Falcon, Colorado 80831
LIGHTING CUT SHEETS

SHEET IDENTIFICATION
SDP-13
 SHEET 13 OF 13