

EL PASO COUNTY

PLANNING AND COMMUNITY DEVELOPMENT DEPARTMENT
2880 INTERNATIONAL CIRCLE, SUITE 110
COLORADO SPRINGS, CO 80910

5417000019
BRIDLE DALE LLC
4356 MONTEBELLO DR
COLORADO SPRINGS, CO 80936

DENVER CO 802

29 JAN 2021 PM

FIRST-CLASS



RECEIVED
FEB 03 2021
BY:

9400921458036030

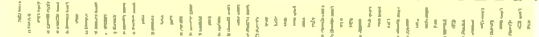
IA

80906-0007-148

NIXIE 008 DE 1 0002

RETURN TO SENDER
INSUFFICIENT ADDRESS
UNABLE TO FORWARD

EC: 20010314835 *2278-0103



NOTICE OF PUBLIC HEARING(S)

This notice provides options to access to the Planning Commission and Board of County Commissioners' hearings on the following Quasi-Judicial land use matter. **The items are scheduled for the Thursday, February 18, 2021 Planning Commission beginning at 1:00 p.m. and the Tuesday, March 9, 2021 Board of County Commissioners' hearing beginning at 9:00 a.m. located in the Centennial Hall Hearing Room located at 200 S. Cascade Avenue, Colorado Springs.**

VA-20-001

HOWSER

VARIANCE OF USE SPACE VILLAGE APARTMENTS

A request by Bridle Dale, LLC, for approval of a variance of use to legalize the existing multi-family residential development. The 0.63-acre property is zoned CC (Commercial Community), is subject to the CAD-O (Commercial Airport Overlay) district, and is located on the south side of Space Village Avenue, approximately 785 feet east of the intersection of Space Village Avenue and Peterson Boulevard, approximately one mile west of Marksheffel Road and is within Section 17, Township 14 South, Range 65 West of the 6th P.M. (Parcel No. 54170-00-019) (Commissioner District No. 4)

Type of Hearing: Quasi-Judicial **Planner: Ryan Howser (ryanhowser@elpasoco.com)**

El Paso County is committed to full access and transparency while the community works through the COVID-19 crisis. That also means balancing public safety and keeping essential parts of County government open for business. Here are the ways you can participate in quasi-judicial land-use items coming up before the Board of County Commissioners:

Watch the Live Hearings Remotely

If you are interested in watching the Planning Commission or Board of County Commissioner hearing live, please go to <https://www.elpasoco.com/news-information-channel/> or visit El Paso County's Facebook page at <https://www.facebook.com/ElPasoCountyCO/> at the scheduled time of the hearing. Staff will be monitoring the County's Facebook Live feed, so please feel free to ask questions or provide any comments you might have; however, any testimony you wish to provide must be done by following the "Participate Remotely" procedures listed below.

Participate Remotely

Due to COVID-19, we are recommending that you participate in the hearing remotely. If you would like to provide testimony on an item being heard by the Planning Commission or Board of County Commissioners, please email Tracey Garcia at TraceyGarcia@elpasoco.com with your name and the best phone number to be reached at and include any documents you would like provided to the hearing body as part of the official record. **NOTE: New exhibits are not permitted via email the day of hearing. All exhibits must be emailed to Ms. Garcia no later than one day prior to each of the above listed hearings.**

A list of individuals wishing to testify will be provided to the Chair in advance of the meeting. When it's time for public testimony on the item you'd like to testify on will receive a phone call at the number you provided and will be brought into the meeting remotely so you can address the hearing body.

Arrive in person (the address is 200 S. Cascade Ave, Colorado Springs, CO 80903)

- In-person attendance at Planning Commission and Board of County Commissioner hearings is permitted, but it is highly discouraged.
- Strict social/physical distancing must be maintained if you arrive to present or testify in person.
- Please pay special attention to any communication you receive regarding the time your item will be heard.

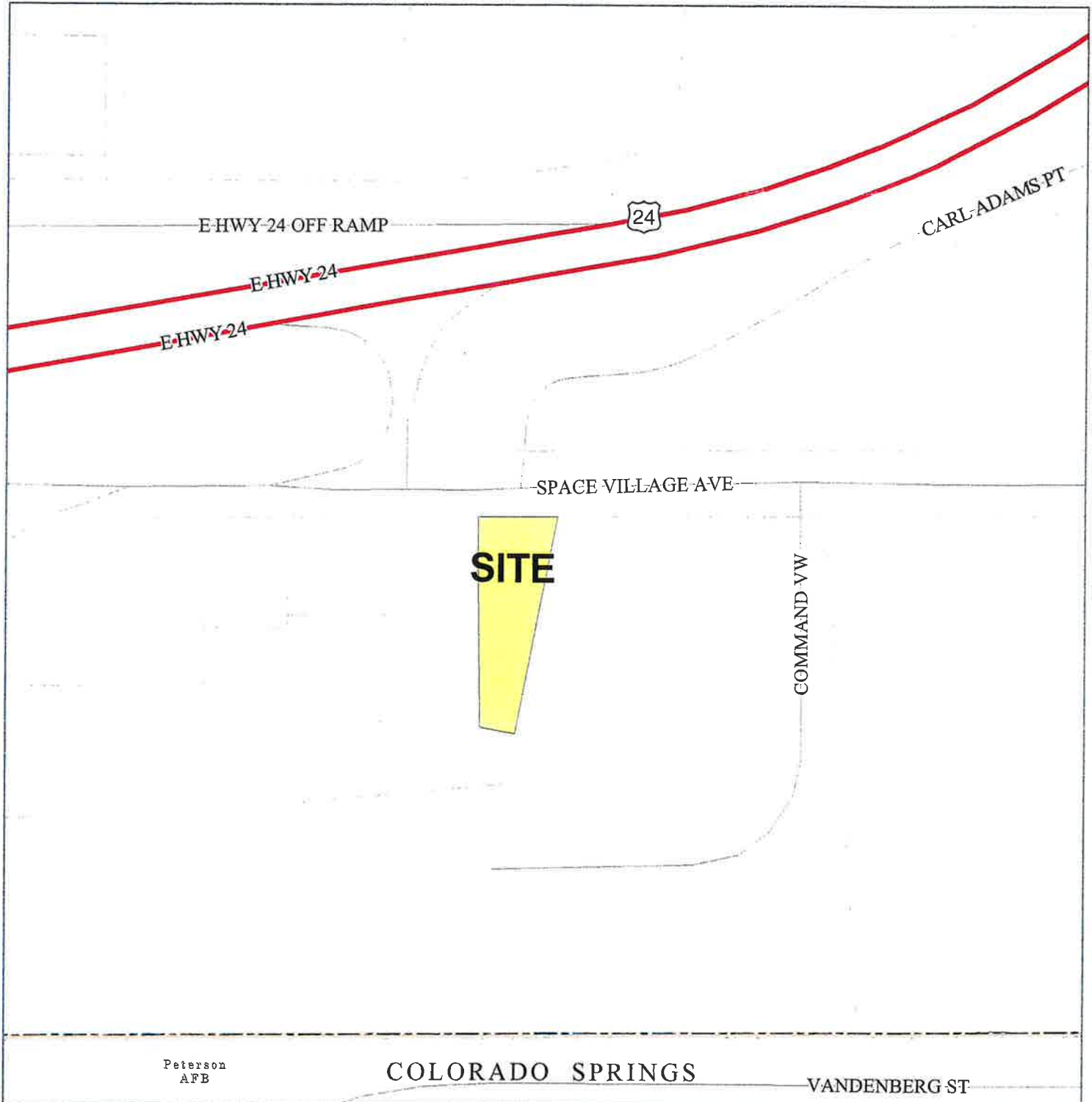
El Paso County Parcel Information

File Name: VA-20-001

PARCEL	NAME
5417000019	BRIDLE DALE LLC

Zone Map No. --

Date: January 27, 2021



Please report any parcel discrepancies to:
El Paso County Assessor
1675 W. Garden of the Gods Rd.
Colorado Springs, CO 80907
(719) 520-6600



COPYRIGHT 2018 by the Board of County Commissioners, El Paso County, Colorado. All rights reserved. No part of this document or data contained hereon may be reproduced, used to prepare derivative products, or distributed without the specific written approval of the Board of County Commissioners, El Paso County, Colorado. This document was prepared from the best data available at the time of printing. El Paso County, Colorado, makes no claim as to the completeness or accuracy of the data contained hereon.