

**POLE SIGN**

**MEINEKE #1547**

1370 Ainsworth St  
Colorado Springs, CO  
80915



Underwriters Laboratories Inc. •  
UL File #E225670

Copyright Notice ©  
This drawing and all  
reproductions thereof are the property  
of Signs Unlimited, Inc. and  
may not be reproduced, published,  
changed or used in any way without  
written consent.

EMBOSSED 1/2" DEEP WITH 2ND SURFACE  
TRANSLUCENT AS SPECIFIED IN COLORS  
"meineke" only

**PROOF**  
**NOTE: ENGINEERING  
REQUIREMENTS MAY  
ALTER FOOTER,  
POLE AND PRICE**

INITIAL LAYOUT:  
January 25, 2019

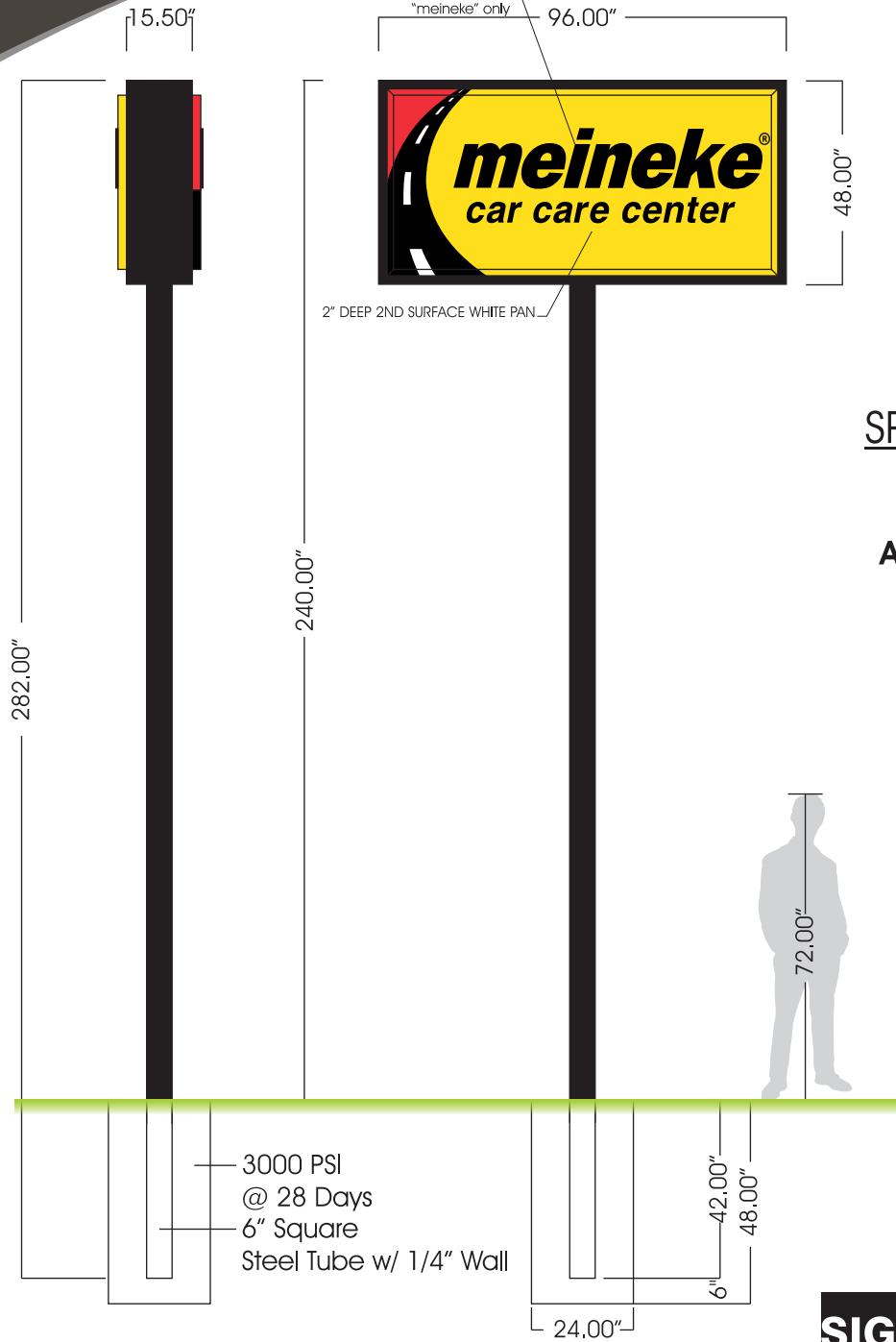
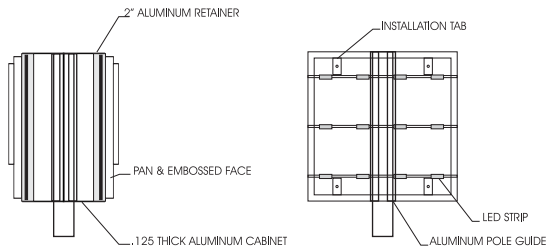
REVISIONS:  
I  
II  
III  
IV  
V

Sq. Ft. Signage: 32.00  
Signage Allowance: 40.00 Sq. Ft.

**COLOR: PAINT AND VINYL**

<b>PAINT:</b> (YELLOW) PMS 109 C <b>VINYL:</b> (YELLOW) 3M 3630-15	<b>PAINT:</b> (RED) PMS 185 C <b>VINYL:</b> (RED) 3M 3630-33
<b>PAINT:</b> (BLACK) PMS BLACK <b>VINYL:</b> (BLACK) 3M 3630-22	<b>PAINT:</b> (WHITE) PMS WHITE <b>VINYL:</b> (WHITE) 3M 3630-20

**DETAIL**



**SPECIFICATIONS**  
**DOUBLE-SIDED**  
**ILLUMINATED**  
**ALUMINUM CABINET**

- Quantity: 1
- Size: As in drawing
- Face Color: As in drawing
- Vinyl Colors: As in drawing
- Face: Pan and Embossed (Top)  
Flat (Bottom)
- Cabinet Interior: Gloss White
- Cabinet Color: Black
- Retainer: 2.0"
- Illumination: LED
- Mounting: Pole w/ concrete footer into earth

3000 PSI  
@ 28 Days  
6" Square  
Steel Tube w/ 1/4" Wall



Owner/Landlord Approval \_\_\_\_\_

SITE PLAN EXHIBIT

# MEINEKE #1547

1370 Ainsworth St  
Colorado Springs, CO  
80915



Underwriters Laboratories Inc.  
UL File #E225670

Copyright Notice ©

This drawing and all reproductions thereof are the property of Signs Unlimited, Inc. and may not be reproduced, published, changed or used in any way without written consent.

INITIAL LAYOUT: January 25, 2019

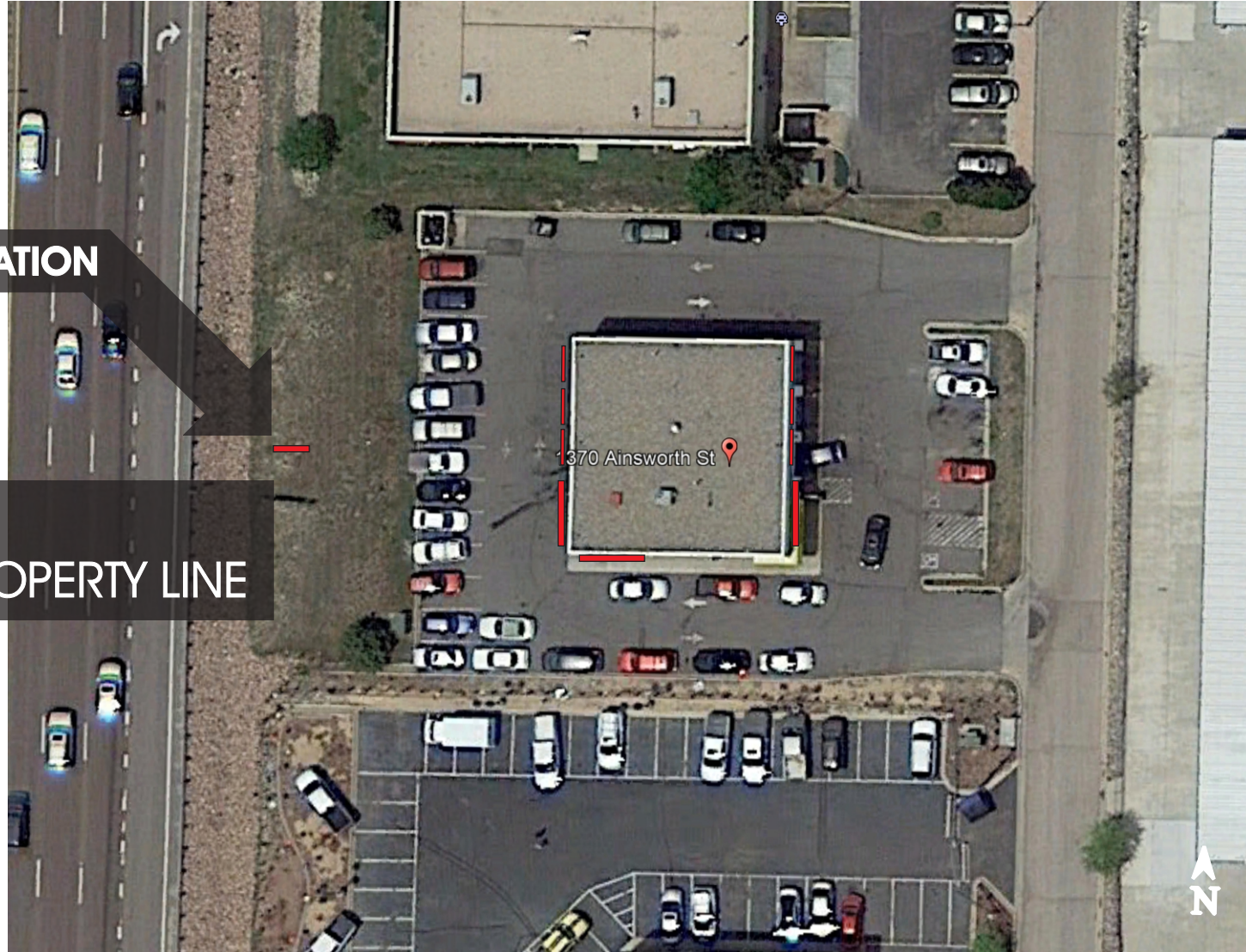
REVISIONS:  
I -  
II -  
III -  
IV -  
V -

## PROPOSED MONUMENT LOCATION

NOTE:  
10' SETBACK FROM PROPERTY LINE

Issues with the site plan,  
1) the property line is still not indicated,  
2) there is also a 14.86' Multi-use easement that is not indicated.

Please include the property line and the easement as depicted on that plat, and sign must be removed from the easement



Owner/Landlord Approval \_\_\_\_\_

**SIGNS UNLIMITED**  
communicate your identity

6801 Mount Hermon Church Rd, Ste C, Durham, NC 27705 • (P) 919-552-8689 • (F) 919-557-1322