



NOTICE OF PUBLIC HEARING(S)

This notice provides options to access to the Planning Commission and Board of County Commissioners' hearings on the following Quasi-Judicial land use matter. **The item is scheduled for the Thursday, August 18, 2022 Planning Commission beginning at 9:00 a.m. located in the Second Floor Hearing Room of the Pikes Peak Regional Development Center, 2880 International Circle, Colorado Springs and the Tuesday, September 6, 2022 Board of County Commissioners' hearing beginning at 1:00 p.m. located in the Centennial Hall Hearing Room located at 200 S. Cascade Avenue, Colorado Springs.**

P-22-003

HOWSER

**MAP AMENDMENT (REZONE)
CLAREMONT RANCH TRACT F**

A request by Rockwood Homes, LLC for approval of a map amendment (rezoning) from PUD (Planned Unit Development) to RM-30 (Residential, Multi-Dwelling). The 9.8-acre property is located at the northeast corner of US Highway 24 and Marksheffel Road and within Section 4, Township 14 South, Range 65 West of the 6th P.M. (Parcel No. 54043-04-013) (Commissioner District No. 2)

Type of Hearing: Quasi-Judicial

Planner: Ryan Howser (RyanHowser@elpasoco.com)

El Paso County is committed to full access and transparency while the community works through the COVID-19 crisis. That also means balancing public safety and keeping essential parts of County government open for business. You are welcome to appear in person at the hearing or attend the hearing remotely.

Watch the Live Hearings Remotely

If you are interested in watching the Planning Commission or Board of County Commissioners' hearing live, please go to <https://cloud.castus.tv/vod/elpasoco/video> at the scheduled time of the hearing. Staff will be monitoring the County's Live feed, so please feel free to ask questions or provide any comments you might have; however, any testimony you wish to provide must be done by following the "Participate Remotely" procedures listed below.

Participate Remotely

If you would like to provide testimony on an item being heard by the Planning Commission or the Board of County Commissioners, please email PCDhearings@elpasoco.com with your name and the best phone number to be reached at and include any documents you would like provided to the hearing body as part of the official record. **NOTE: New exhibits are not permitted via email the day of hearing. All exhibits must be emailed to PCDhearings no later than one day prior to each of the above listed hearings. Whether you are attending remotely or in person, kindly note there is a three (3) minute time limit on public comments and/or presentations.**

A list of individuals wishing to testify will be provided to the Chair in advance of the meeting. When it's time for public testimony on the item you'd like to testify on, you will receive a phone call at the number you provided and will be brought into the meeting remotely so you can address the hearing body.

Please <https://epcdevplanreview.com/Public/ProjectDetails/179391> to view the Staff Report and all other documents related to this hearing item.

El Paso County Parcel Information

PARCEL	NAME
5404304013	ROCKWOOD HOMES LLC

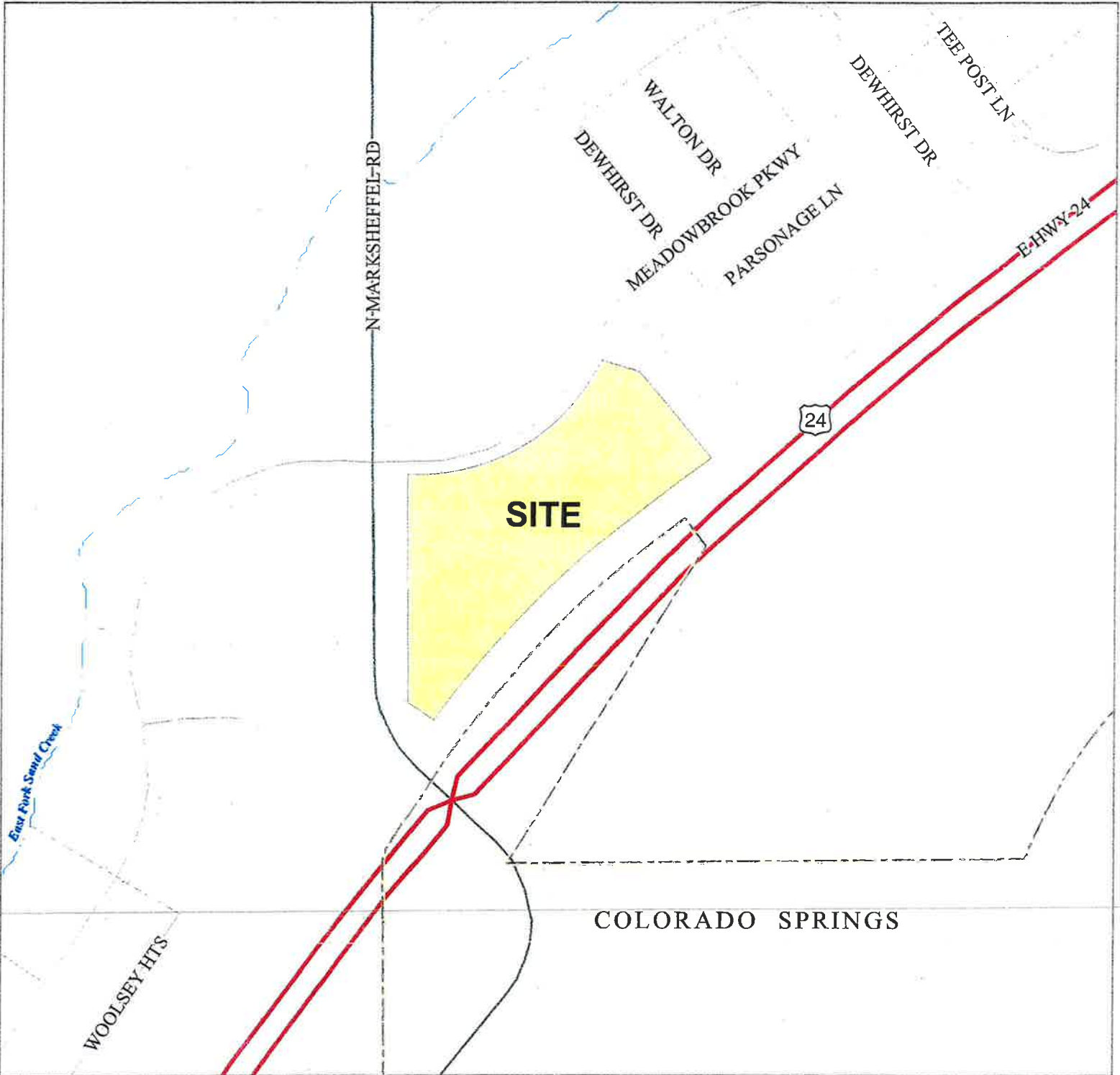
File Name: P-22-003

Zone Map No.: --

ADDRESS	CITY	STATE
5436 CARVEL GRV	COLORADO SPRINGS	CO

ZIP	ZIPLUS
80922	

Date: July 28, 2022



Please report any parcel discrepancies to:
El Paso County Assessor
1675 W. Garden of the Gods Rd.
Colorado Springs, CO 80907
(719) 520-6600



COPYRIGHT 2022 by the Board of County Commissioners, El Paso County, Colorado. All rights reserved. No part of this document or data contained hereon may be reproduced; used to prepare derivative products; or distributed without the specific written approval of the Board of County Commissioners, El Paso County, Colorado. This document was prepared from the best data available at the time of printing. El Paso County, Colorado, makes no claim as to the completeness or accuracy of the data contained hereon.

EL PASO COUNTY



Planning and Community Development Department
2880 International Circle, Suite 110
Colorado Springs, CO 80910



5404304014
CENTRAL MARKSHEFFEL
METROPOLITAN
455 E PIKES PEAK AVE STE 100
COLORADO SPRINGS, CO 80903

FIRST-CLASS



US POSTAGESM PITNEY BOWES
ZIP 80910 \$ 000.57⁰
02 7H
0001332609 JUL 29 2022

POSTNET: 5333323662

80910>8167

NOT DELIVERABLE TO ADDRESSEE
UNABLE TO FORWARD
RC: 80910610735 *1268-00617-03-21