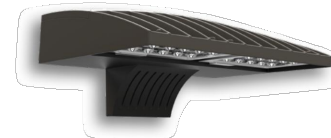


Z:\SCLinc Projects\Meridian Pump Structure\Elec\Meridian Pump Structure Eledwg 2/15/25 4:57 PM By: Matthew Crosby



D-Series Size 1
LED Wall Luminaire

d-series

Specifications
Luminaire

Width: 13-3/4" (34.3 cm)
Depth: 10" (25.4 cm)
Height: 6-3/8" (16.2 cm)

Weight: 12 lbs (5.4 kg)

Back Box (BBW, ELCW)

Width: 13-3/4" (34.3 cm)
Depth: 4" (10.2 cm)
Height: 6-3/8" (16.2 cm)

Weight: 5 lbs (2.3 kg)
Weight: 10 lbs (4.5 kg)

Introduction

The D-Series Wall luminaire is a stylish, fully integrated LED solution for building-mount applications. It features a sleek, modern design and is carefully engineered to provide long-lasting, energy-efficient lighting with a variety of optical and control options for customized performance.

With an expected service life of over 20 years of nighttime use and up to 74% in energy savings over comparable 250W metal halide luminaires, the D-Series Wall is a reliable, low-maintenance lighting solution that produces sites that are exceptionally illuminated.

Ordering Information

EXAMPLE: DSXW1 LED 20C 1000 40K T3M MVOLT DDBTXD

Series	LEDs	Drive Current	Color temperature	Distribution	Voltage	Mounting	Control Options
DSXW1 LED	10C 10 LEDs (one engine)	350 350 mA	30K 3000 K	T5S Type I Short	120 ¹	Shipped included (blank) Surface mounting bracket	Shipped installed PE Photocentric cell, button type ⁴ DMG 0-10v dimming wires pulled outside fixture (for use with an external control, ordered separately) 180° motion/ambient light sensor, <15 mg/ft ² PIR 180° motion/ambient light sensor, 15-30 mg/ft ² PIR1FCW Motion/ambient sensor, 8-15' mounting height, ambient sensor enabled at 16' ¹² ELCW Motion/ambient sensor, 15-30' mounting height, ambient sensor enabled at 16' ¹² Emergency battery backup (includes external component enclosure), (A Note 10 Noncompliant ¹⁴)
	20C 20 LEDs (two engines) ¹	530 530 mA	40K 4000 K	T3M Type II Medium	208 ¹		
	700 700 mA	50K 5000 K	T3S Type II Short	240 ¹			
	1000 1000 mA (1 A) ¹	AMBCP Amber pigtailed converted	T3M Type II Medium	277 ¹			
				T4M Type IV Medium	347 ¹	BBW Surface-mounted back box (for conduit entry) ⁵	
				TFTM Forward Throw Medium	480 ¹⁴		

Other Options	Finish options			
Shipped installed SF Single fuse (120, 277 or 347V) ^{1,14} DF Double fuse (208, 240 or 480V) ^{1,14} HS House-side shield ¹¹ SPD Separate surge protection ¹²	Shipped separately ¹¹ BBW Black-deterrent spikes HS Vandal guard DDL Diffused drop lens	DOBXD Dark bronze DBLXD Black DWAXD Natural aluminum DWAXD White	DSSXD Sandstone DOBXD Textured dark bronze DWAXD Textured black DWAXD Textured natural aluminum	DWHGXD Textured white DSSXD Textured sandstone

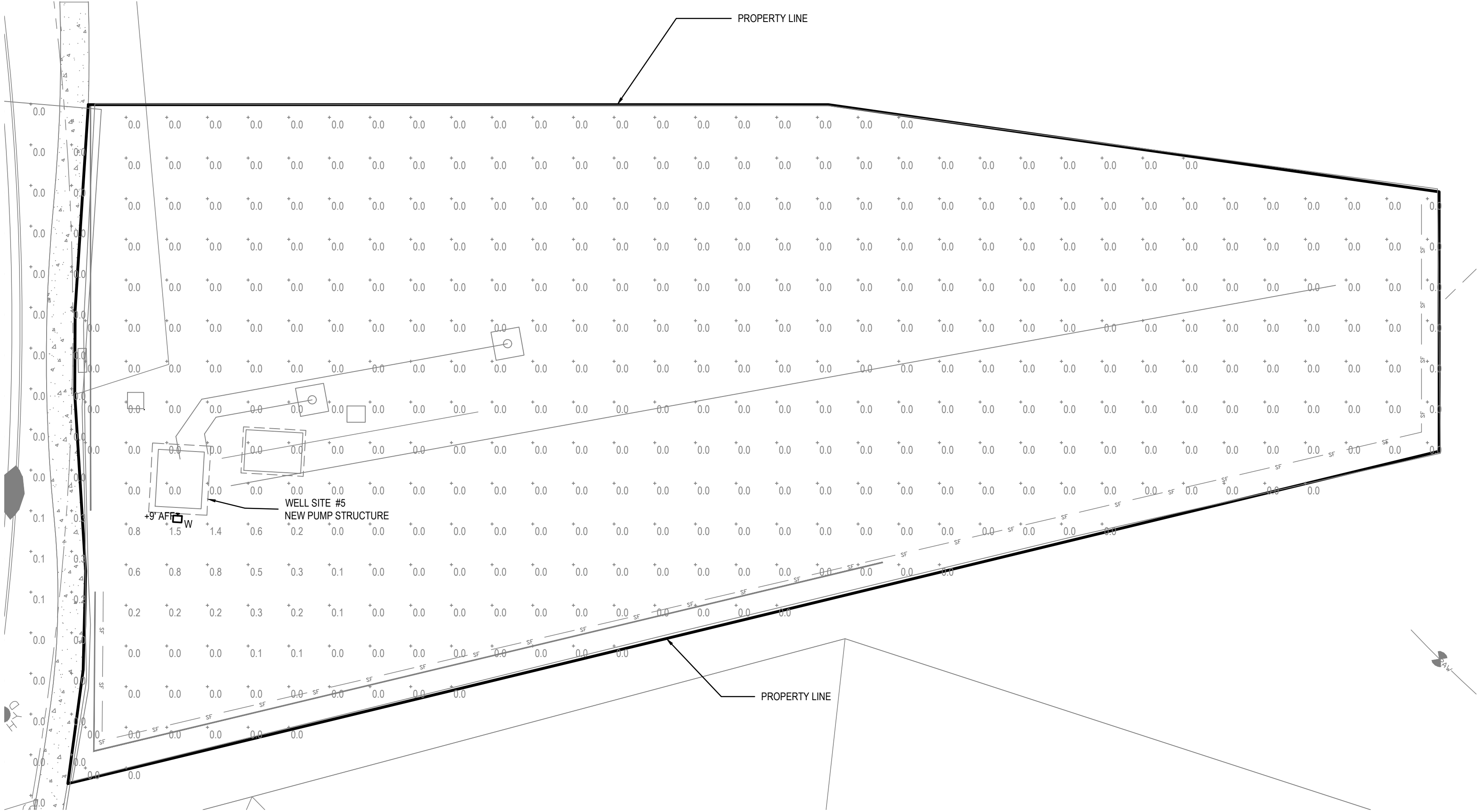
Accessories
Ordered and shipped separately.

DSXW1S House-side shield (see per lamp engine)
DSXW1SDS Black-deterrent spikes
DSXW1VS Vandal guard accessory

NOTES
1. 20C, 1000 is not available with PIR, PIRH, PIR1FCW or PIR1HFCW.
2. MVOLT driver operates on any line voltage from 120-277V (50/60 Hz).
3. Single fuse (SF) requires 120, 277 or 347 voltage option. Double fuse (DF) requires 208, 240 or 480 voltage option.
4. Only available with 25C, 700mA or 1000mA. Not available with PIR or PIRH.
5. Back box ships installed on fixture. Cannot be field installed. Cannot be ordered as an accessory.
6. Photocentric PIR requires 120, 208, 240, 277 or 347 voltage option. Not available with motion/ambient light sensors (PIR or PIRH).
7. Reference Motion Sensor table on page 3.
8. Cold weather (20C) rated. Not compatible with conduit entry applications. Not available with BBW mounting option. Not available with fusing. Not available with 347 or 480 voltage options. Emergency components located in back box housing. Emergency mode (ES) files located on product page at www.lithonia.com.
9. Not available with SPD.
10. Not available with ELCW.
11. Also available as a separate accessory; see Accessories information.
12. Not available with ELCW.

One Lithonia Way • Cary, Georgia 30012 • Phone: 1-800-705-SERV (7378) • www.lithonia.com
© 2013-2021 Acuity Brands Lighting, Inc. All rights reserved.

DSXW1-LED
Rev. 4/19/21



1
DP-1
PHOTOMETRIC PLAN
SCALE: 1"=20'-0"



Chavez Tiffany & Ayers
Engineering Corporation

611 North Nevada Avenue
Colorado Springs, Colorado 80903
P (719)636-0021

GENERAL NOTES:

1. ALL LIGHTS TO BE FULL CUT-OFF

Statistics						
Description	Symbol	Avg	Max	Min	Max/Min	Avg/Min
SITE #5	+	0.0 fc	1.5 fc	0.0 fc	N/A	N/A
SITE #5 BEYOND BOUNDARY	+	0.0 fc	0.3 fc	0.0 fc	N/A	N/A

LIGHT FIXTURE SCHEDULE								
TYPE	MFR	CATALOG NO.	LAMPS		MTG	DESCRIPTION	NOTES	TOTAL
			LUMENS	COLOR TEMP				WATTS
W	LITHONIA	DSXW1 LED 10C 350 40K T3M MVOLT DDBXD	1,600	4000	WALL	LED WALL PACK		120 13.3

JDS-HYDRO CONSULTANTS, INC.
5540 TECH CENTER DR., SUITE 100
COLORADO SPRINGS, COLORADO 80919
(719) 227-0072

DISCLAIMER: THE CONTRACTOR SHALL VERIFY ALL DIMENSIONS. ANY ERRORS OR OMISSIONS SHALL BE REPORTED TO JDS-HYDRO CONSULTANTS, INC. JDS-HYDRO ASSUMES NO LIABILITY FOR UNAUTHORIZED CHANGES AND/OR REVISIONS MADE TO PLANS.

MERIDIAN SERVICE METROPOLITAN DISTRICT

WELL SITE #5

PHOTOMETRIC PLAN

NO.	DESCRIPTION	BY	APP.	DATE
1				
2				
3				
4				
5				
6				
7				

REVISIONS

PRELIMINARY

Project No.: 151.48
Date: 5/28/2021
Design: JJA
Drawn: MTC
Check: JJA

DP-1
SHEET 1 OF

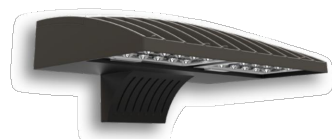
2021/05/25 5:03 PM By: Matthew Crosby Z:\SCL\inc Projects\Meridian Pump Structure\Elec\Meridian Pump Structure Eledwg

LIGHT FIXTURE SCHEDULE								
TYPE	MFGR	CATALOG NO.	LAMPS		MTG	DESCRIPTION	NOTES	TOTAL WATTS
			LUMENS	COLOR TEMP				
W	LITHONIA	DSXW1 LED 10C 350 40K T3M MVOLT DDBXD	1,600	4000	WALL	LED WALL PACK		120
								13.3




GENERAL NOTES:

1. ALL LIGHTS TO BE FULL CUT-OFF

Statistics						
Description	Symbol	Avg	Max	Min	Max/Min	Avg/Min
SITE #8	+	0.0 fc	1.4 fc	0.0 fc	N/A	N/A



D-Series Size 1 LED Wall Luminaire



d-series

Specifications Luminaire

Width: 13-3/4" (34.9 cm)
Depth: 10" (25.4 cm)
Height: 6-3/8" (16.2 cm)

Weight: 12 lbs (5.4 kg)

Back Box (BBW, ELCW)

Width: 13-3/4" (34.9 cm)
Depth: 4" (10.2 cm)
Height: 6-3/8" (16.2 cm)

BBW Weight: 5 lbs (2.3 kg)
ELCW Weight: 10 lbs (4.5 kg)

Introduction

The D-Series Wall luminaire is a stylish, fully integrated LED solution for building-mount applications. It features a sleek, modern design and is carefully engineered to provide long-lasting, energy-efficient lighting with a variety of optical and control options for customized performance.

With an expected service life of over 20 years of nighttime use and up to 74% in energy savings over comparable 250W metal halide luminaires, the D-Series Wall is a reliable, low-maintenance lighting solution that produces sites that are exceptionally illuminated.

Ordering Information

Series	LEDs	Drive Current	Color temperature	Distribution	Voltage	Mounting	Control Options
DSXW1 LED	10C 10 LEDs (blue engine) 20C 20 LEDs (blue engine) ¹	350 350 mA 530 530 mA 700 700 mA 1000 1000 mA (1 A) ¹	30K 3000 K 40K 4000 K 50K 5000 K AMBPC Amber phosphor converted	T2S Type II Short T2M Type II Medium T2S Type II Short T3M Type III Medium T4M Type IV Medium TTFM Forward Throw Medium	MVOLT ² 120 ³ 208 ³ 240 ³ 277 ³ 347 ¹⁴ 480 ¹⁴	Shipped included (blank) Surface-mounting bracket BBW Surface-mounted back box (for conduit entry) ¹	Shipped installed PE Photoelectric cell, button type ⁴ DMG 0-10V dimming wires pulled outside fixture (for use with an external control, ordered separately) PIR 180° motion/ambient light sensor, <15' mtg ht. ¹² PIRH 180° motion/ambient light sensor, 15-30' mtg ht. ¹² PIRHFCV Motion/ambient sensor, 0-15' mounting height, ambient sensor enabled at 16' ¹² PIRHFCV Motion/ambient sensor, 15-30' mounting height, ambient sensor enabled at 16' ¹² ELCW Emergency battery backup (includes external component enclosure), CA Title 20 Noncompliant ¹⁵

Other Options:

Shipped installed	Shipped separately ¹¹	Finish (see note)
SF Single fuse (120, 277 or 347V) ^{1,6}	BSW Bird-deterrent spikes	DOBXD Dark bronze
DF Double fuse (208, 240 or 480V) ^{1,6}	VG Vandal guard	DBLXD Black
HS House-side shield ¹¹	DOL Diffused drop lens	DNALXD Natural aluminum
SPD Separate surge protection ¹¹		DWLXD White
		DNATXD Textured natural aluminum

Accessories

Ordered and shipped separately.

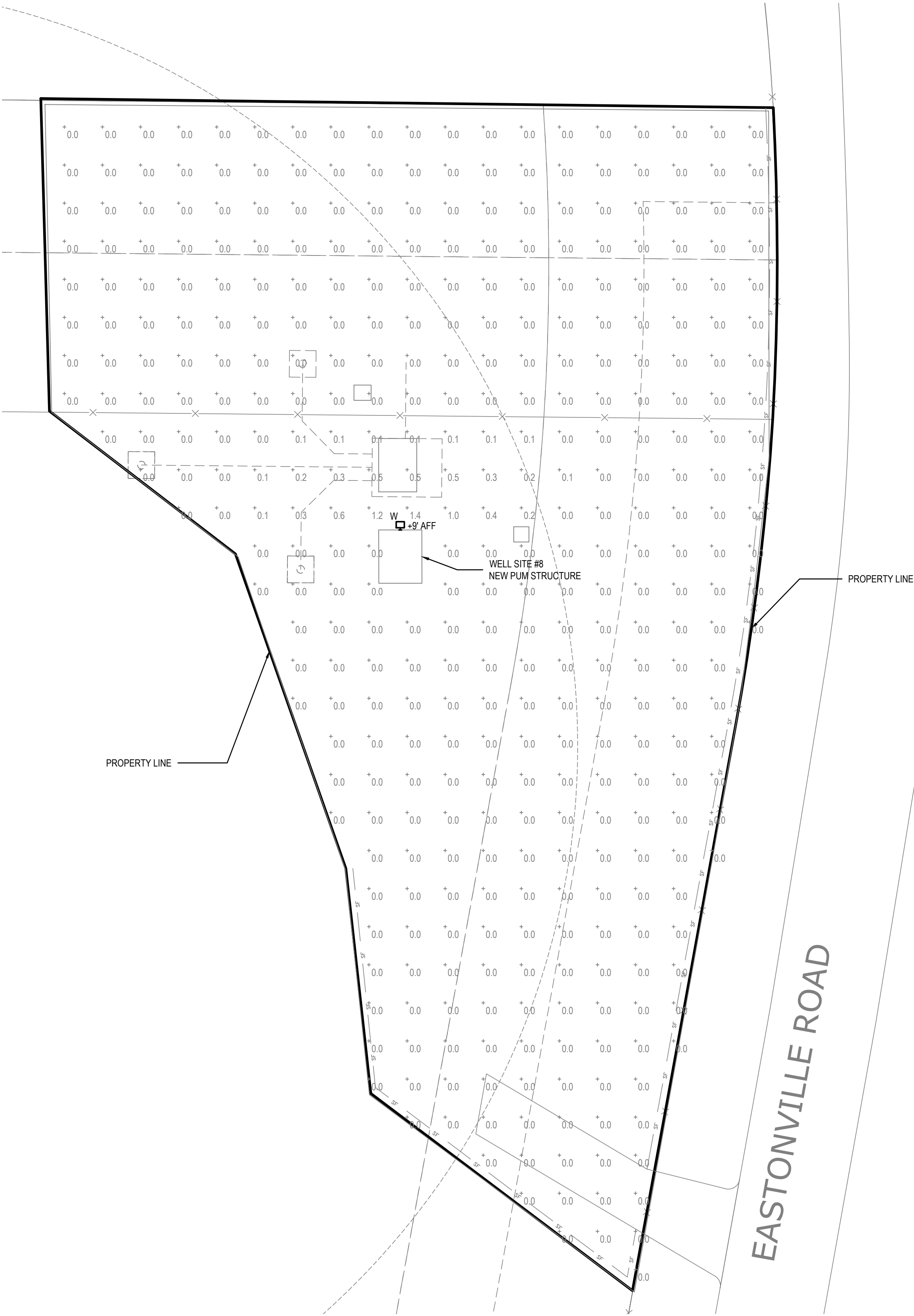
DSXW1S House-side shield (see per light engine)
DSXW1S Bird-deterrent spikes
DSXW1S Vandal guard accessory

NOTES

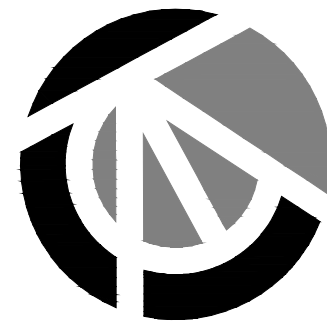
- 20C 1000 is not available with PIR, PIRH, PIRHFCV or PIRHFCV.
- MVOLT driver operates on any line voltage from 120-277V (50/60 Hz).
- Single fuse (SF) requires 120, 277 or 347 voltage option. Double fuse (DF) requires 208, 240 or 480 voltage option.
- Only available with 20C, 700mA or 1000mA. Not available with PIR or PIRH.
- Back box ships installed on fixture. Cannot be field installed. Cannot be ordered as an accessory.
- Photocell (PE) requires 120, 208, 240, 277 or 347 voltage option. Not available with motion/ambient light sensors (PIR or PIRH).
- Reference Motion Sensor table on page 3.
- Cold weather (-20C) rated. Not compatible with conduit entry applications. Not available with BBW mounting option. Not available with fusing. Not available with 347 or 480 voltage options. Emergency components located in back box housing. Emergency mode (ES) files located on product page at www.lithonia.com
- Not available with SPD.
- Not available with ELCW.
- Also available as a separate accessory; see Accessories information.
- Not available with ELCW.

One Lithonia Way • Conyers, Georgia 30012 • Phone: 1-800-705-SERV (7378) • www.lithonia.com
© 2013-2021 Acuity Brands Lighting, Inc. All rights reserved.

DSXW1-LED
Rev. 4/19/21



1
DP-1
PHOTOMETRIC PLAN
SCALE: 1"=20'-0"



Chavez Tiffany & Ayers
Engineering Corporation

611 North Nevada Avenue
Colorado Springs, Colorado 80903
P (719)636-0021

JDS-HYDRO CONSULTANTS, INC.
5540 TECH CENTER DR., SUITE 100
COLORADO SPRINGS, COLORADO 80919
(719) 227-0072

PHOTOMETRIC PLAN

WELL SITE #8

MERIDIAN SERVICE METROPOLITAN DISTRICT

NO.	DESCRIPTION	BY	APP.	DATE
1				
2				
3				
4				
5				
6				
7				

PRELIMINARY

Project No.: 151.48
Date: 5/28/2021
Design: JJA
Drawn: MTC
Check: JJA

DP-1
SHEET 1 OF