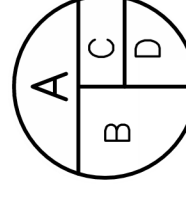


STERLING RANCH FILING NO. 5 PROPOSED DRAINAGE MAP

LEGEND

- BASIN ID
- A: BASIN LABEL
- B: AREA
- C: 100 YR
- D: C-5 YR



- DESIGN POINT
- PROPOSED FLOW DIRECTION
- EXISTING FLOW DIRECTION
- BASIN DRAINAGE AREA
- EXISTING STORM SEWER
- STORM SEWER PROPOSED
- PROPOSED R.O.W
- PROPOSED PROPERTY LINES
- PROPOSED SIDEWALK
- EXISTING PROPERTY LINE
- ROW EXISTING
- FL EXISTING
- SIDEWALK EXISTING
- DRAINAGE ACCESS & MAINTENANCE EASEMENT

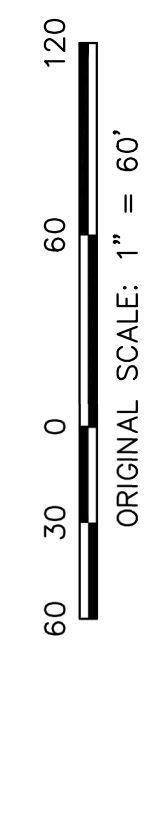
BASIN SUMMARY TABLE

Tributary Sub-basin (area)	Percent Impervious	C _s	C _u	t _c (min)	Q ₁₀₀ (cfs)	Q ₅ (cfs)	Q _{0.5} (cfs)
A1	0.65	37%	0.32	0.51	18.5	0.7	2.0
A2	0.78	46%	0.35	0.53	17.2	0.9	2.6
A3	0.79	44%	0.33	0.51	19.1	0.8	2.5
A4	1.00	80%	0.68	0.79	9.6	2.8	6.0
A5	2.84	62%	0.50	0.64	11.6	5.5	13.2
A6	0.66	58%	0.45	0.60	7.0	1.4	3.3
A7	2.04	59%	0.50	0.65	13.2	3.8	9.2
A8	1.10	77%	0.64	0.75	9.1	3.0	6.4
A9	0.20	52%	0.38	0.54	10.3	0.3	0.8
A10	1.32	52%	0.38	0.55	13.0	1.9	5.0
OS1	0.77	65%	0.45	0.59	10.3	1.4	3.4
C4	3.67	62%	0.55	0.70	27.2	5.4	13.5

DESIGN POINT

DP	OS	C100	Total
1	2.1	5.4	7.5
2	0.7	2.0	2.7
2.1	2.7	7.3	10.0
3	0.8	2.5	3.3
4	2.8	6.0	8.8
5	7.4	18.4	25.8
5.1	10.0	25.7	35.7
6	1.4	3.3	4.7
7	3.8	9.2	13.0
8	3.0	6.4	9.4
8.1	6.4	14.9	21.3
8.2	15.5	38.8	54.3
9	0.3	0.8	1.1
10	1.9	5.0	6.9
10.1	17.1	43.1	60.2
11	12.0	25.9	37.9
12	3.9	19.3	23.2
13	2.0	7.3	9.3
13.1	16.9	35.6	52.5
14	3.8	7.9	11.7
15	5.6	14.1	19.7
16.1	30.0	93.5	123.5
17.1	73.3	194.0	267.3

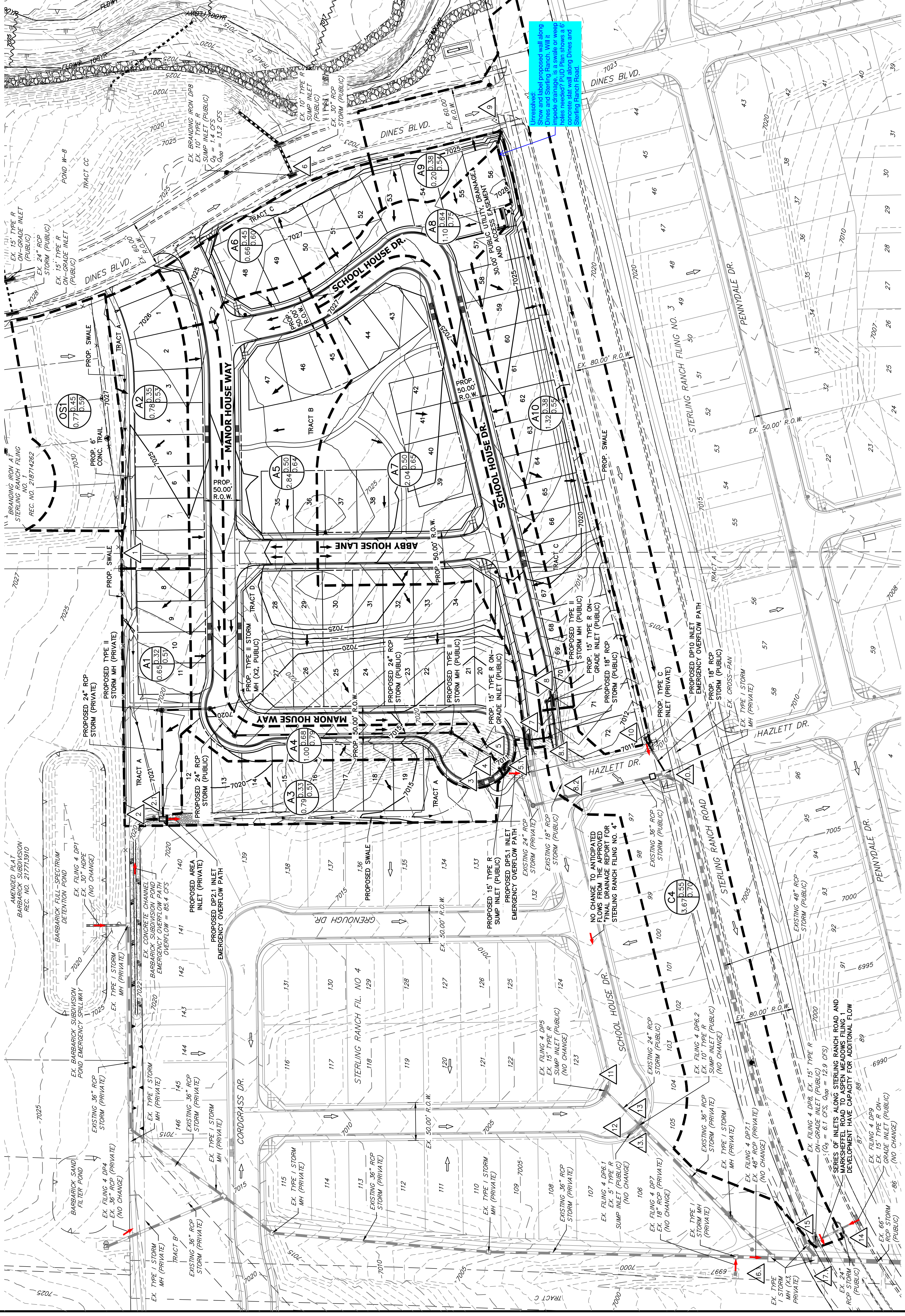
Values in BLUE indicate they are from the approved "Final Drainage Report for Sterling Ranch Filing No. 4" dated August 14, 2023 by JR Engineering.



STERLING RANCH FILING NO. 5
PROPOSED DRAINAGE MAP
JOB NO. 25188.16
11/03/23
SHEET 1 OF 1



JR ENGINEERING
A Westman Company
Central 303-740-9388 • Colorado Springs 719-589-2880
Fort Collins 970-491-9888 • www.jreng.com



Unresolved:
Show and label proposed wall along Dines and Sterling Ranch. Will it be concrete or masonry? P10 7/24 shows 3.6' concrete slab wall along Dines and Sterling Ranch Road.

NO CHANGE TO ANTICIPATED FLOWS FROM THE APPROVED FINAL DRAINAGE REPORT FOR STERLING RANCH FILING NO. 4

SERIES OF INLETS ALONG STERLING RANCH ROAD AND MARKSHELF ROAD TO ASPEN MEADOWS FILING DEVELOPMENT HAVE CAPACITY FOR ADDITIONAL FLOW