

SITE CATEGORY CALCULATIONS

Landscape Setbacks

Street Name or Boundary	Street Classification	Width (in Ft.) Req./Prov.	Linear Footage	Tree/Feet Required	No. of Trees Req./Prov.	Setback Plant Abbr. Denoted on Plan
Londonderry Drive	Non-Arterial	15' / 22'	444'	1 / 15'	30 / 30	(LD)
Turner Avenue	Non-Arterial	10' / 20'	693'	1 / 30'	23 / 23	(TA)

Parking

No. of Vehicles Spaces Provided	Shade Trees Required/Provided	Abbr. on Plan	Vehicle Lot Frontages	Length of Frontage (excluding driveways)	2/3 Length of Frontage (ft.)
67	5 / 5	(MV)	Londonderry Drive Turner Avenue	180' 153'	120' 101'

Min. 3' Screening Plants Req. / Prov.	Evergreen Plants Req. (50%) / Prov.	Length of Screening Wall or Berm Provided	Vehicle Lot Plant Abbr. on Plan	Percent Ground Plane Veg. Req. / Prov.
24 / 24 20 / 20	12 / 15 10 / 10	-	(LS) (TS)	75% / 75% 75% / 75%

Internal Landscaping

Net Site Area (SF) (less public ROW)	Percent Minimum Internal Area (%)	Internal Area (SF) Required / Provided	Internal Trees (1/500 SF) Required / Provided
258,746 s.f.	5%	12,937 s.f. / 19,500 s.f.	26 / 4 (Request Alternative Landscape Plan)

Shrub Substitutes Required / Provided	Internal Plant Abbr. Denoted on Plan
40 / 40	(IN)

Landscape Buffer & Screens

Street Name or Property Line	Width (in Ft.) Req. / Prov.	Linear Footage	Buffer Trees (1/25') Required / Provided	Evergreen Trees Req. (1/3) / Provided
West boundary	15' / 15'	532'	21 / 21	7 / 15
South boundary	15' / 15'	458'	18 / 18	6 / 12

Length of 6 Ft. Opaque Structure Req. / Prov.	Buffer Tree Abbr. Denoted on Plan	Percent Ground Plane Veg. Req. / Prov.
464' / 464' (existing fence)	(WB)	75% / 100%
458' / 458' (existing fence)	(SB)	75% / 100%

ALTERNATIVE LANDSCAPE PLAN REQUEST-

The internal trees and shrubs provided have been calculated and provided based on the developed site area. Since a majority of the site is not being developed it is requested that internal trees and shrubs not be required for the entire site. All other landscape requirements are being met.

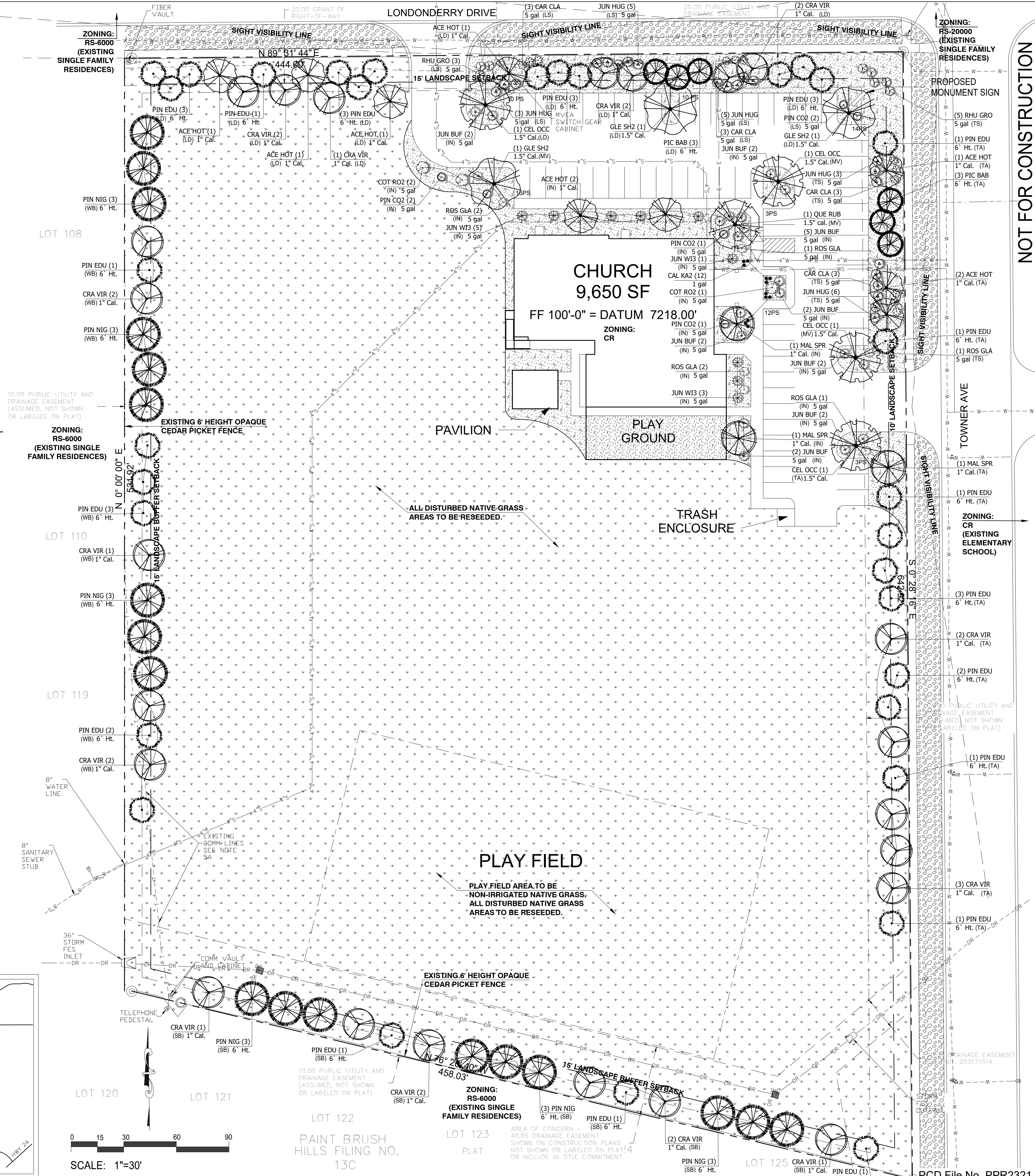
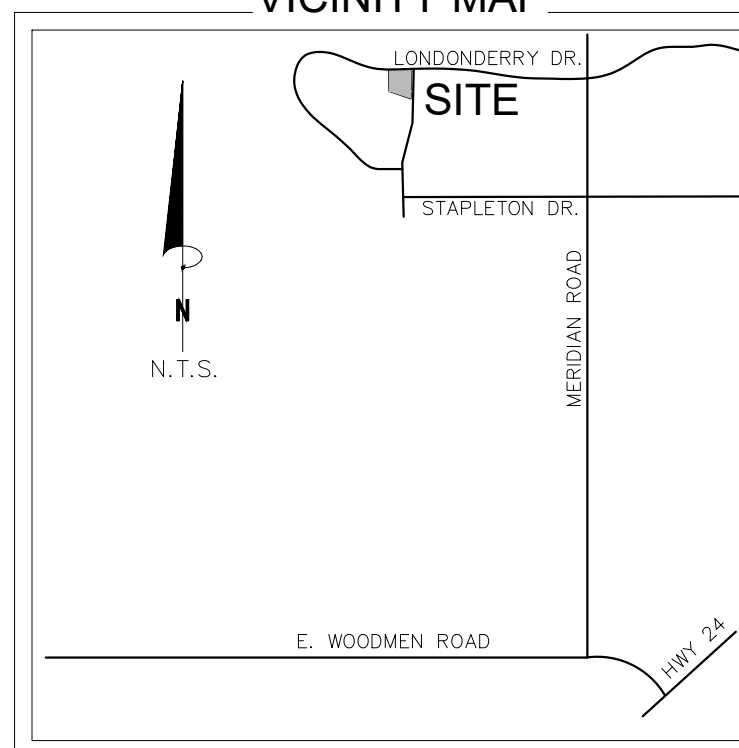
PLANT SCHEDULE

TREES	CODE	QTY	BOTANICAL NAME	COMMON NAME	SIZE	NOTES	HEIGHT
	ACE HOT	9	Acer tataricum 'Hot Wings'	Hot Wings Tatarian Maple	1" Cal.	B & B	15' to 20'
	CEL OCC	4	Celtis occidentalis	Common Hackberry	1.5" Cal.	B & B	30' to 40'
	CRA VIR	23	Crataegus viridis 'Winter King'	Winter King Hawthorn	1" Cal.	B & B	15' to 20'
	GLE SH2	3	Gleditsia triacanthos inermis 'Shademaster' TM	Shademaster Locust	1.5" Cal.	B & B	30' to 40'
	MAL SPR	3	Malus x 'Spring Snow'	Spring Snow Crab Apple	1" Cal.	B & B	20' to 25'
	PIC BAB	6	Picea pungens glauca 'Baby Blue Eyes'	Baby Blue Eyes Spruce	6" Ht.	B & B	25' to 30'
	PIN EDU	32	Pinus cembroides edulis	Pinyon Pine	6" Ht.	B & B	15' to 20'
	PIN NIG	18	Pinus nigra	Austrian Black Pine	6" Ht.	B & B	30' to 40'
	QUE RUB	1	Quercus rubra	Northern Red Oak	1.5" cal.	B & B	30' to 40'
SHRUBS	CODE	QTY	BOTANICAL NAME	COMMON NAME	SIZE	NOTES	HEIGHT
	CAR CLA	12	Caryopteris x clandonensis 'Blue Mist'	Blue Mist Spirea	5 gal		3' to 4'
	COT RO2	3	Cotinus coggygria 'Royal Purple'	Royal Purple Smoke Tree	5 gal		5' to 8'
	JUN HUG	22	Juniperus horizontalis 'Hughes'	Hughes Juniper	5 gal		1' to 2'
	JUN BUF	19	Juniperus sabinina 'Buffalo'	Buffalo Juniper	5 gal		1' to 2'
	JUN W13	9	Juniperus scopulorum 'Wichita Blue'	Wichita Blue Juniper	5 gal		12' to 15'
	PIN CO2	6	Pinus mugo 'Compacta'	Dwarf Mugo Pine	5 gal		3' to 5'
	RHU GRO	8	Rhus aromatica 'Gro-Low'	Gro-Low Fragrant Sumac	5 gal		1' to 2'
	ROS GLA	7	Rosa glauca	Redleaf Rose	5 gal		4' to 5'
ORNAMENTAL GRASSES	CODE	QTY	BOTANICAL NAME	COMMON NAME	SIZE	NOTES	HEIGHT
	CAL KA2	12	Calamagrostis x acutiflora 'Karl Foerster'	Feather Reed Grass	1 gal		3' to 4'

GROUND PLANE TREATMENT

SYMBOL	DESCRIPTION	QTY
	BLUE GRAY RIVER ROCK, 1.5" DIAMETER, 3" DEPTH OVER LANDSCAPE FABRIC	13,873 sf
	CLEAR CREEK GRANITE, 1.5" DIAMETER, 3" DEPTH OVER LANDSCAPE FABRIC	17,764 sf
	PLAYGROUND MULCH- 6" DEPTH	1,994 sf
	EXISTING NATIVE GRASS TO REMAIN. ALL DISTURBED NATIVE GRASS AREAS ARE TO BE RE-SEEDED.	202,469 sf

VICINITY MAP



NOT FOR CONSTRUCTION



Jon Walsh.
LANDSCAPE ARCHITECT
LLC

P.O. Box 354
Palmer Lake, CO 80133
(719) 640-9428
jwlandarch@gmail.com
www.jwlandscapearchitect.com

PROJECT FILE: fdnchurch-1p-8-22-23.dwg

FOUNDATION LUTHERAN CHURCH

9950 & 9960 Turner Avenue
Falcon, CO

PROJECT NAME:

FINAL LANDSCAPE PLAN

SHEET TITLE:

DATE: March 24, 2023

August 24, 2023

REVISIONS:

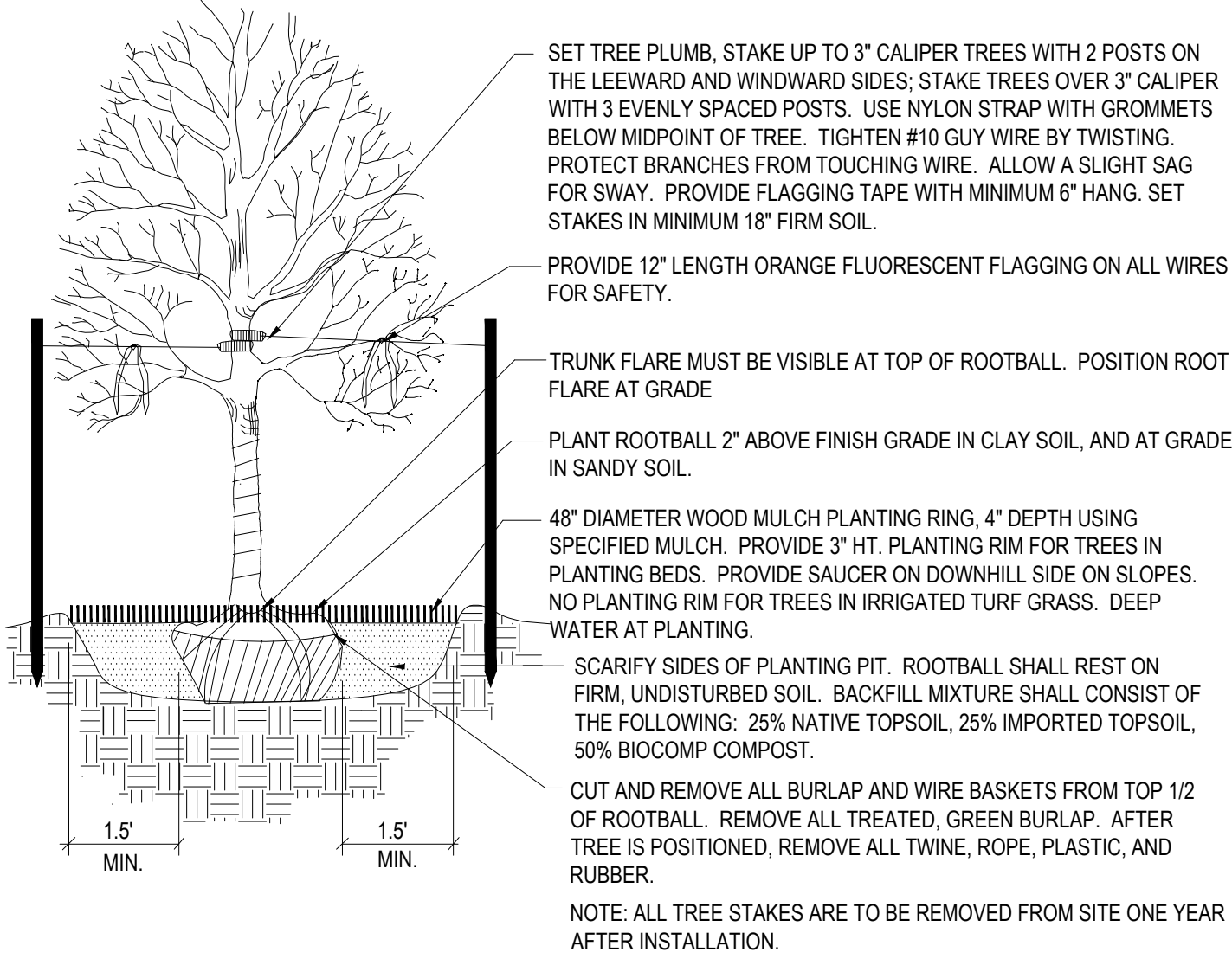
STAMP:

L1

Sheet 1 of 2

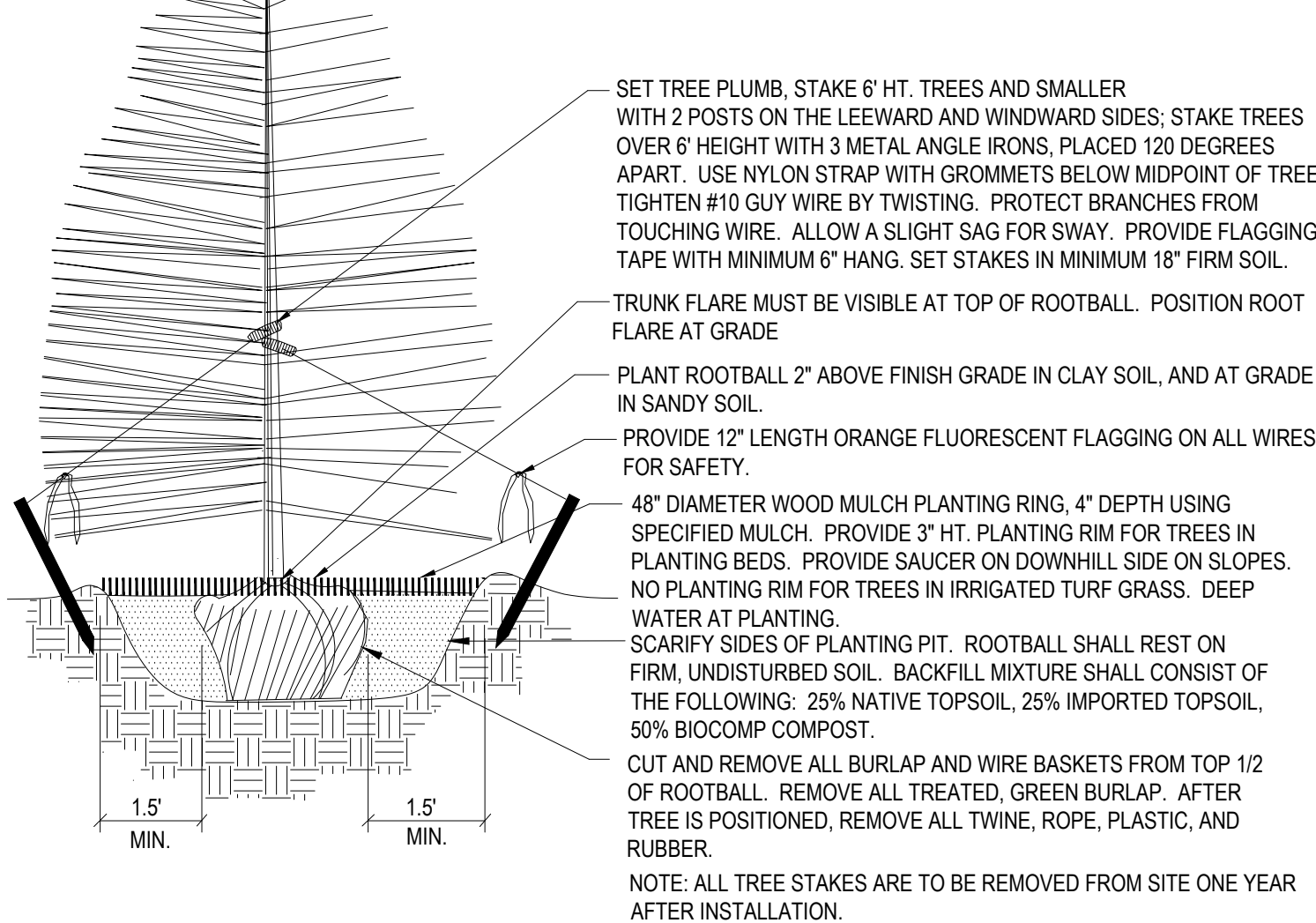
PLANTING DETAILS

- NOTES:
- DO NOT REMOVE OR CUT LEADER.
 - PRUNE ONLY DEAD OR BROKEN BRANCHES AND WEAK OR NARROW CROTCHES.
 - DO NOT REMOVE LOWER LIMBS AND SPROUTS FOR AT LEAST TWO GROWING SEASONS.
 - KEEP PLANTS MOIST AND SHADED UNTIL PLANTED.
 - DO NOT FERTILIZE FOR AT LEAST ONE GROWING SEASON.
 - WRAP TRUNK ON EXPOSED SITES OR SPECIES WITH THIN BARK. USE ELECTRICAL TAPE NOT TWINE.
- WRAP OCTOBER 15 AND REMOVE BY MARCH 31.

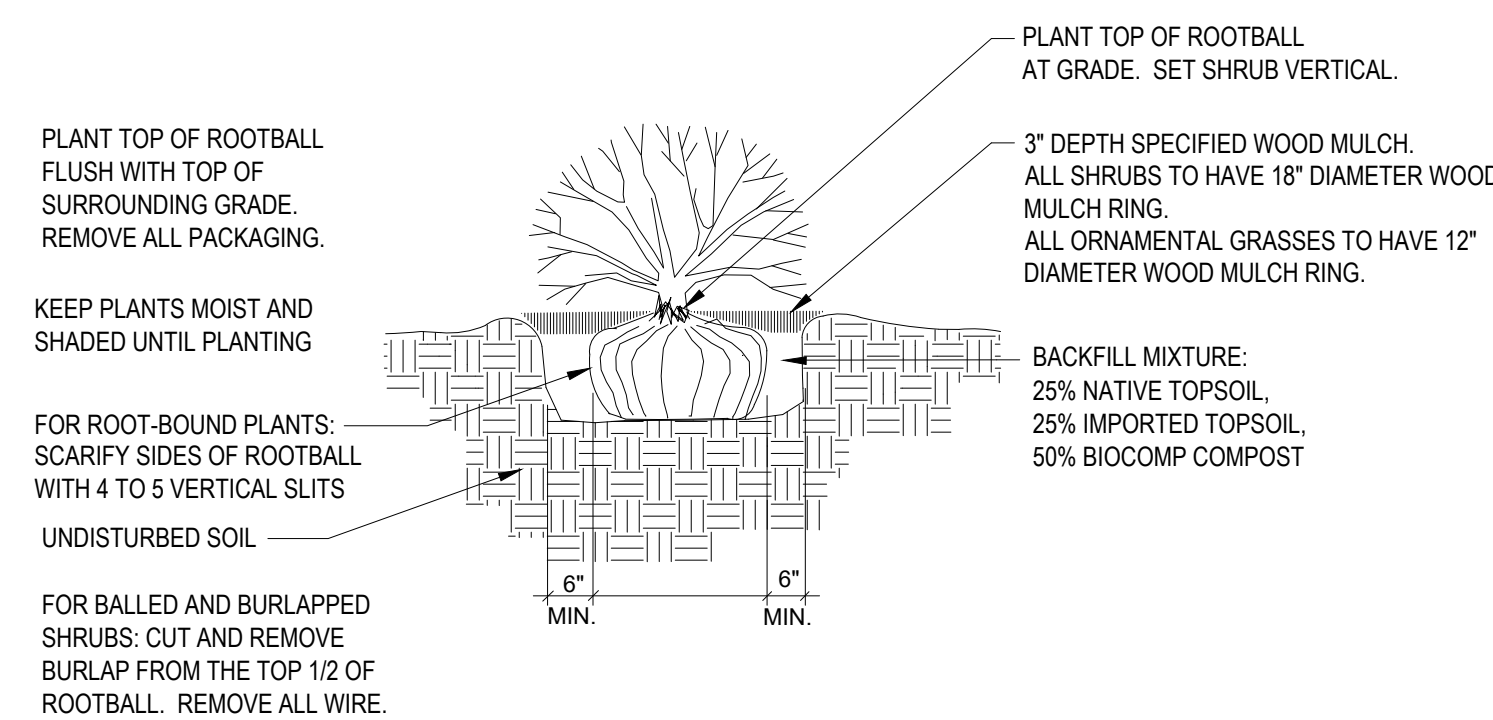


1 Deciduous Tree Planting Detail
NOT TO SCALE

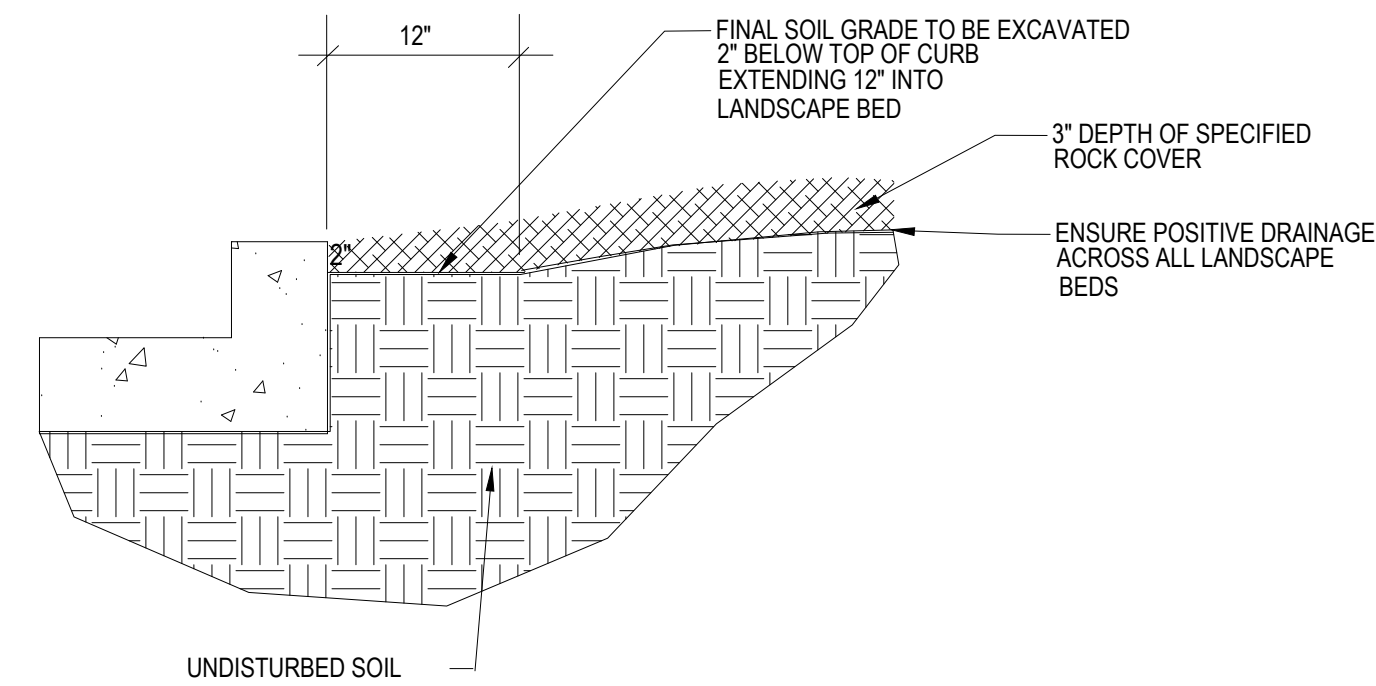
- NOTES:
- DO NOT REMOVE OR CUT LEADER.
 - PRUNE ONLY DEAD OR BROKEN BRANCHES AND WEAK OR NARROW CROTCHES.
 - REMOVE ANY DOUBLE LEADER, UNLESS OTHERWISE DIRECTED BY OWNERS REPRESENTATIVE.
 - KEEP PLANTS MOIST AND SHADED UNTIL PLANTED.
 - AVOID FALL PLANTING IF POSSIBLE.



2 Coniferous Tree Planting Detail
NOT TO SCALE



3 Shrub Planting Detail
SCALE: NOT TO SCALE



4 Rock Cover / Mulch Bed Excavation
SCALE: NOT TO SCALE

EL PASO COUNTY ALL-PURPOSE MIX FOR UPLAND, TRANSITION AND PERMANENT CONTROL MEASURE AREAS

COMMON NAME	SCIENTIFIC NAME	GROWTH SEASON / FORM	% OF MIX	POUNDS PLS (PURE LIVE SEED)		
				-IRRIGATED BROADCAST -IRRIGATED HYDROSEEDDED	-NON-IRRIGATED BROADCAST -NON-IRRIGATED HYDROSEEDDED -IRRIGATED DRILLED	-NON-IRRIGATED DRILLED
				80 SEEDS/SQ. FT.	40 SEEDS/SQ. FT.	20 SEEDS/SQ. FT.
BIG BLUESTEM	<i>Buchloe dactyloides</i>	WARM, SOD	20%	4.4	2.2	1.1
BLUE GRAMA	<i>Bouteloua gracilis</i>	WARM, BUNCH	10%	0.5	0.25	0.13
GREEN NEEDLEGRASS	<i>Nassella viridula</i>	COOL, BUNCH	10%	2	1	0.5
WESTERN WHEATGRASS	<i>Pascopyrum smithii</i>	COOL, SOD	20%	6.4	3.2	1.6
SIDE-OATS GRAMA	<i>Bouteloua curtipendula</i>	WARM, BUNCH	10%	2	1	0.5
SWITCHGRASS	<i>Panicum virgatum</i>	WARM, BUNCH/ SOD	10%	0.8	0.4	0.2
PRAIRIE SANDREED	<i>Calamovilfa longifolia</i>	WARM, BUNCH	10%	1.2	0.6	0.3
YELLOW INDIANGRASS	<i>Sorghastrum nutans</i>	WARM, SOD	10%	2	1	0.5
SEED RATE (LBS. PLS / ACRE)				19.3	9.7	4.8

NATIVE SEED ESTABLISHMENT

INITIAL PLANTING
STOCKPILED TOPSOIL SHOULD BE SPREAD EVENLY OVER ALL AREAS TO RECEIVE NATIVE SEED. SEED BED IS TO BE WEED-FREE. SPECIFIED SOIL AMENDMENTS SHOULD BE SPREAD AND INCORPORATED INTO TOP 6" OF SOIL. SEED BED IS TO BE RAKED SMOOTH AND FREE OF DEBRIS LARGER THAN 1" IN DIAMETER. ANY AREAS THAT THE CONTRACTOR BELIEVES TO BE SUSCEPTIBLE TO EROSION ARE TO BE BROUGHT TO THE ATTENTION OF THE OWNER AND/OR GENERAL CONTRACTOR PRIOR TO SEEDING. THE SPECIFIED SEED MIX IS TO BE APPLIED BY HYDRO-MULCH SEEDING AT THE RATE SPECIFIED. SEED IS TO BE APPLIED BETWEEN APRIL 15 AND SEPTEMBER 15. SEED SHALL NOT BE SOWN IF GROUND IS IN A FROZEN STATE. SPECIFIED EROSION CONTROL BLANKET IS TO BE INSTALLED IMMEDIATELY AFTER SEEDING. BLANKET SHALL BE LAID AND SECURED WITH 6" METAL STAPLES AS PER MANUFACTURER'S INSTRUCTIONS. CONTRACTOR IS TO PROVIDE INCIDENTAL WATERING OF ALL SEEDED AREAS THREE TIMES A WEEK DURING GROWING SEASON FOR A MINIMUM OF 8 WEEKS, OR UNTIL ESTABLISHED AND MEETING COVERAGE REQUIREMENTS. MOWING MAY BE NECESSARY DURING THE FIRST GROWING SEASON TO KEEP INVASIVE WEEDS FROM SETTING SEEDS. CONTRACTOR IS RESPONSIBLE FOR KEEPING BROADLEAF WEEDS UNDER CONTROL FOR 12 MONTHS AFTER INITIAL SEEDING AND IS ALSO RESPONSIBLE FOR OVER SEEDING BARE AREAS UNTIL SPECIFIED NATIVE GRASSES COVER ALL AREAS AND AREAS WITHOUT SPECIFIED NATIVE GRASS DO NOT EXCEED 6' X 6'.

OVER SEEDING
SIX WEEKS AFTER THE INITIAL SEEDING DURING THE FIRST GROWING SEASON AND/OR DURING THE SPRING OF THE SECOND GROWING SEASON CONTRACTOR IS TO REPAIR ANY ERODED AREAS AND OVER SEED ALL BARE NATIVE GRASS AREAS. CONTRACTOR IS TO USE SPECIFIED SEED MIX BY BROADCAST AND RAKING INTO TOP 1/4" TO 1/2" OF SOIL. INCIDENTAL WATERING IS TO BE PROVIDED TO ESTABLISH OVER-SEEDED AREAS. BROADLEAF WEEDS ARE TO BE KEPT UNDER CONTROL BY MANUALLY PULLING OR CUTTING WEEDS OR SPRAYING OF BROADLEAF WEED HERBICIDE. HERBICIDE AND APPLICATION SHALL CONFORM TO ALL APPLICABLE LAWS OF THE STATE OF COLORADO AND MANUFACTURERS INSTRUCTIONS.

GENERAL NOTES

- ALL REFERENCES TO 'CONTRACTOR' REFER TO LANDSCAPE CONTRACTOR, UNLESS OTHERWISE NOTED.
- CONTRACTOR IS RESPONSIBLE FOR GETTING ALL UTILITY LOCATES PRIOR TO STARTING ANY WORK ON SITE AND ALSO HAVING UTILITIES RELOCATED AS NECESSARY FOR THE DURATION OF CONSTRUCTION.
- CONTRACTOR IS RESPONSIBLE FOR INSTALLING ALL LANDSCAPE SHOWN ON THIS PLAN. ANY DEFICIENCIES OR DEVIATIONS FROM THIS PLAN ARE TO BE APPROVED BY OWNER'S REPRESENTATIVE OR LANDSCAPE ARCHITECT. ANY CHANGES FROM THE APPROVED PLANS MAY REQUIRE APPROVAL FROM THE EL PASO COUNTY PLANNING DEPARTMENT AND MAY DELAY COMPLETION OF PROJECT.
- CONTRACTOR IS RESPONSIBLE FOR VERIFYING QUANTITIES OF MATERIALS NEEDED TO COMPLETE THIS PLAN IN THE FIELD. NOTIFY OWNER'S REPRESENTATIVE OF DISCREPANCIES BETWEEN THE DRAWINGS AND CONDITIONS IN THE FIELD. SUBSTITUTIONS OF LANDSCAPE MATERIALS ARE NOT ALLOWED WITHOUT APPROVAL FROM LANDSCAPE ARCHITECT GIVEN PRIOR TO INSTALLATION. NOTIFY LANDSCAPE ARCHITECT PRIOR TO CONSTRUCTION IF LANDSCAPE MATERIAL LOCATIONS NEED TO BE ALTERED DUE TO ON-SITE CONDITIONS.
- CONTRACTOR IS TO PROVIDE A ONE YEAR WARRANTY ON ALL PLANT MATERIALS, IRRIGATION COMPONENTS, NATIVE GRASS, AND WORKMANSHIP. CONTRACTOR IS TO PROVIDE OWNER WITH WARRANTY CONDITIONS AND COMMENCE WARRANTY PERIOD UPON FINAL ACCEPTANCE OF LANDSCAPE INSTALLATION.
- THE OWNER OF THIS PROPERTY AND ANY FUTURE OWNERS SHALL BE RESPONSIBLE FOR THE PROPER LANDSCAPE AND IRRIGATION MAINTENANCE OF THIS SITE. MAINTENANCE OF THIS SITE INCLUDES, BUT IS NOT LIMITED TO, IRRIGATION INSPECTIONS AND ADJUSTMENTS, IRRIGATION SYSTEM SHUT DOWN AND START UP, IRRIGATION LEAK REPAIR, LANDSCAPE WEEDING, MOWING, SEEDING, FERTILIZATION, PRUNING, AND PLANT MATERIAL REPLACEMENT.

PROJECT NOTES

- FINE GRADING TO BE PERFORMED BY LANDSCAPE CONTRACTOR TO REFLECT FINISHED GRADES SHOWN ON THE PROJECT GRADING PLANS. ALL FINISHED GRADES ARE TO HAVE A MINIMUM 2% SLOPE. CONTRACTOR IS TO REPORT POOR DRAINAGE CONDITIONS OR ANY GRADES IN LANDSCAPE AREAS LESS THAN 2% TO GENERAL CONTRACTOR AND LANDSCAPE ARCHITECT PRIOR TO LANDSCAPE CONSTRUCTION WORK.
- CONTRACTOR IS TO PROVIDE FINAL GRADES ADJACENT TO HARDSCAPE SURFACES AT THE FOLLOWING SPECIFICATIONS:
2" BELOW TOP OF CONCRETE OR ASPHALT FOR ALL ROCK COVER BEDS.
1" BELOW TOP OF CONCRETE OR ASPHALT FOR NATIVE SEED AREAS.
CONTRACTOR IS TO COORDINATE THESE GRADING SPECIFICATIONS WITH GENERAL CONTRACTOR AND/OR WHOEVER IS PROVIDING ROUGH GRADING. FINAL GRADES IN ALL LANDSCAPE AREAS ARE TO BE ESTABLISHED USING ON-SITE STOCKPILED TOPSOIL.
- ALL DISTURBED NATIVE GRASS AREAS ARE TO BE SEEDED WITH SPECIFIED SEED MIX BY HYDRO-MULCHING OR DRILL SEEDING (WHERE ACCESSIBLE) AT SEEDING RATE SHOWN IN TABLE. REFER TO NATIVE SEED ESTABLISHMENT SPECIFICATION AND SEED MIX TABLE FOR MORE DETAILED INSTRUCTIONS.
- ROCK COVER AREAS INSIDE PROPERTY BOUNDARIES TO CONSIST OF 1.5" 'CLEAR CREEK GRANITE' CRUSHED GRANITE (C&C SAND), SPREAD 3" DEPTH OVER LANDSCAPE FABRIC. RIGHT OF WAY AREAS TO CONSIST OF 1.5" BLUE GRAY RIVER ROCK, SPREAD 3" DEPTH OVER LANDSCAPE FABRIC. LANDSCAPE FABRIC TO CONSIST OF A WOVEN FIBER FABRIC (MIRAFI OR EQUAL). FABRIC TO OVERLAP 6" MINIMUM AT ALL SEAMS. 6" STEEL ANCHOR PINS TO BE INSTALLED 8" O.C. MAX.
- 'CASCADE CEDAR' (C&C SAND) WOOD MULCH IS TO BE PROVIDED AROUND THE BASE OF ALL PLANTINGS, 3" DEPTH (NO FABRIC BENEATH). REFER TO PLANTING DETAILS.
- STEEL EDGING IS TO CONSIST OF 14 GAUGE PERFORATED GALVANIZED ROLLED-TOP STEEL EDGING. EDGING IS TO BE USED TO SEPARATE GRASS AND ROCK COVER AREAS, UNLESS OTHERWISE NOTED ON PLAN. EDGING IS TO BE PARTIALLY BURIED SO THAT HALF OF EDGING HEIGHT IS BELOW FINISHED SOIL GRADE. 12" STEEL EDGING PINS TO BE INSTALLED EVERY 4' O.C. MAX. ENDS OF STEEL EDGING TO OVERLAP 6" MINIMUM WITH AND HAVE TWO PINS SECURING OVERLAPPED ENDS.

SOIL PREPARATION NOTES

- NATIVE GRASS AREAS:** ALL DISTURBED NATIVE GRASS AREAS TO RECEIVE 2 CU. YDS. PER 1,000 SQ. FT. OF 'BIOCOMP' SOIL AMENDMENTS (C&C SAND) INCORPORATED INTO EXISTING SOIL AND ROTO-TILLED TO A 6" DEPTH.
- PROPOSED TREES AND SHRUBS:** ALL PROPOSED TREES ARE TO BE BACKFILLED WITH A MIXTURE OF 'BIOCOMP' SOIL AMENDMENT AND IMPORTED GRADE A TOPSOIL (C&C SAND). REFER TO PLANTING DETAIL.

IRRIGATION NOTES

- ALL PROPOSED PLANT MATERIALS ARE TO BE WATERED BY A PROPOSED PERMANENT AUTOMATIC DRIP IRRIGATION SYSTEM. ALL SHRUBS TO HAVE (2) 1 GPH EMITTERS PLACED AT EDGE OF ROOTBALL ON OPPOSITE SIDES. ALL TREES TO HAVE (4) 1 GPH EMITTERS PLACED 90 DEGREES APART AROUND EDGE OF ROOTBALL.
- ALL SEEDED NATIVE GRASS AREAS TO BE ESTABLISHED BY A TEMPORARY SPRAY IRRIGATION ZONES CONNECTED TO THE AUTOMATIC IRRIGATION SYSTEM OR WITH PORTABLE SPRINKLER HEADS AND HOSES CONNECTED TO IRRIGATION SYSTEM QUICK COUPLERS AND/OR BUILDING HOSE BIBS.

GRADING / DRAINAGE NOTES

- LANDSCAPE CONTRACTOR IS TO VERIFY THAT ALL FINISHED GRADES COMPLY WITH GRADING PLAN PREPARED BY CIVIL ENGINEER. VERIFY THAT ALL SLOPES DRAIN AWAY FROM BUILDING(S) AND THAT DRAINAGE SWALES ARE CORRECTLY LOCATED AND CARRY WATER AS INTENDED. NOTIFY GENERAL CONTRACTOR PRIOR TO CONSTRUCTION IF STANDING WATER IS PRESENT (OTHER THAN DETENTION FACILITIES) OR IF SLOPES ARE NOT GRADED AS PER APPROVED GRADING PLAN.
- LANDSCAPE CONTRACTOR IS TO LOCATE ALL DOWNSPOUTS AND DOWNSPOUT EXTENSIONS AND VERIFY THAT NO OBSTRUCTIONS ARE IMPEDING THE FLOW OF WATER AWAY FROM THE BUILDING. REMOVE SMALL SECTIONS OF STEEL EDGING WHEREVER DRAINAGE WILL NOT FREELY FLOW THROUGH EDGING.
- LANDSCAPE CONTRACTOR IS TO PROVIDE TEMPORARY EROSION MITIGATION MEASURES FOR THE DURATION OF LANDSCAPE CONSTRUCTION. THIS INCLUDES PLACEMENT OF WATTLES AND/OR EROSION BLANKET WHEREVER DRAINAGE ERODES BARE SOIL AND RUNOFF CAN POTENTIALLY DAMAGE NEIGHBORING PROPERTIES OR SEDIMENT COULD POTENTIALLY FLOW OUTSIDE OF PROPERTY LINES.

NOT FOR CONSTRUCTION

JWLA
Jon Walsh
LANDSCAPE ARCHITECT
LLC
P.O. Box 354
Palmer Lake, CO 80133
(719) 640-9428
jwlandarch@gmail.com
www.jwlandscapearchitect.com

PROJECT FILE: fdnchurch-ftp 8-22-23.dwg

FOUNDATION LUTHERAN CHURCH
9950 & 9960 Tower Avenue
Falcon, CO

PROJECT NAME:

FINAL LANDSCAPE PLAN

SHEET TITLE:

DATE: March 24, 2023

August 24, 2023

REVISIONS:

STAMP:

SHEET NO. L2

Sheet 2 of 2