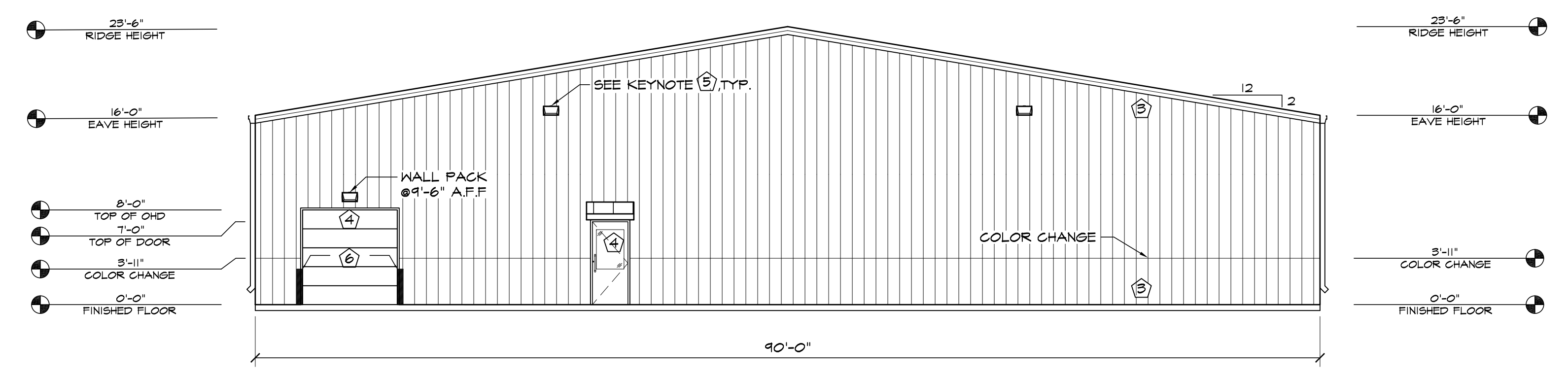
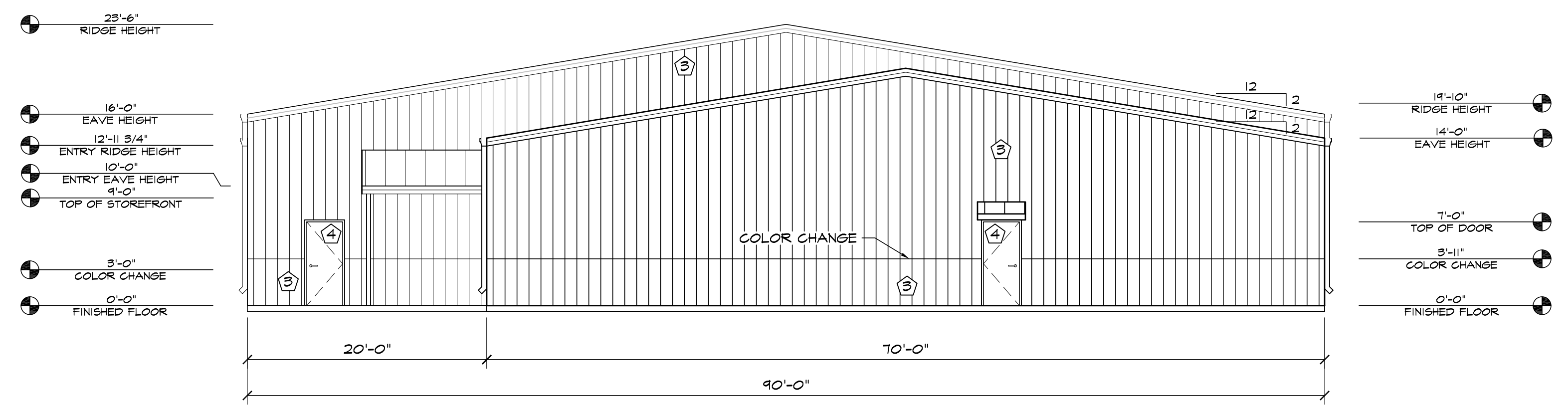


**1 EAST ELEVATION**  
SCALE: 1/8"=1'-0"

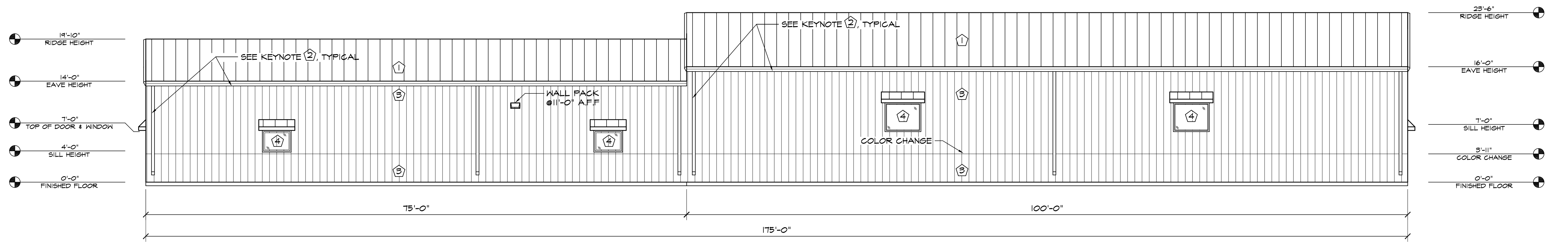


**2 SOUTH ELEVATION**  
SCALE: 1/8"=1'-0"



**3 NORTH ELEVATION**  
SCALE: 1/8"=1'-0"

ELEVATION KEY NOTES	
1	PREFINISHED 24 GA. "PBR" METAL ROOF PANELS BY METAL BUILDING PROVIDER
2	PREFINISHED GUTTER & DOWNSPOUTS BY METAL BUILDING PROVIDER
3	PREFINISHED 26 GA. "PBR" METAL WALL PANELS BY METAL BUILDING PROVIDER
4	SEE SCHEDULES ON "A" SHEETS FOR ALL DOOR INFORMATION
5	WALL PACK LIGHT TOP OF LIGHT @ 16'-0" A.F.F. UNLESS NOTED OTHERWISE
6	PROTECTION POST @ 3'-0" A.F.F.

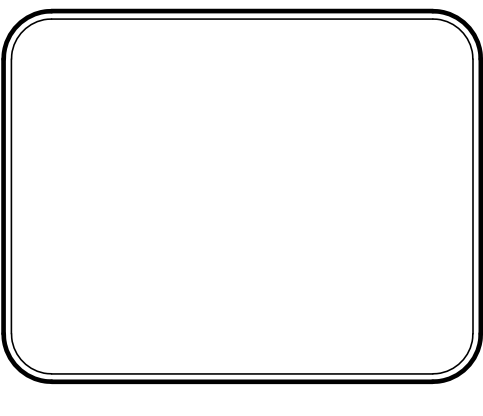
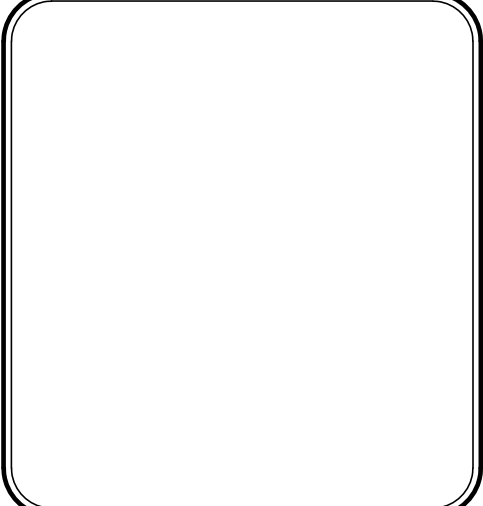


**4 WEST ELEVATION**  
SCALE: 1/8"=1'-0"

**HAMMERS CONSTRUCTION INC.**  
COMMERCIAL GENERAL CONTRACTORS SPECIALIZING IN DESIGN/BUILD  
PRESIDENT: STEVE R. HAMMERS  
VICE PRES: DAVID J. HAMMERS  
1411 WOOLSEY HEIGHTS  
COLORADO SPRINGS, CO 80915  
(719) 570-1589 FAX (719) 570-7008  
www.hammersconstruction.com

THIS DRAWING CONTAINS MATERIAL & INFORMATION WHICH MAY NOT BE REPRODUCED WITHOUT WRITTEN CONSENT OF HAMMERS CONSTRUCTION INC. THESE DRAWINGS ARE INTENDED TO BE USED ONLY BY HAMMERS CONSTRUCTION & ITS REPRESENTATIVES. THESE DRAWINGS HAVE NOT BEEN PREPARED FOR ANY OTHER PURPOSE THAN TO INDICATE THE GENERAL FEATURES AND PLACEMENT OF THE PROPOSED PROJECT. COPYRIGHT © 2018 HAMMERS CONSTRUCTION

**PEAK GYMNASTICS**  
PEAK GYMNASTICS & FITNESS  
10611 MALTESE POINT  
PEYTON, CO 80831  
EL PASO COUNTY, COLORADO



DATE: JULY 9, 2018  
DRAWN BY: J. CANTERBERRY  
PROJ. MGR: Z. CRABTREE  
SCALE: SEE PLAN  
APPROVED BY:  
JOB NO: 1059

- RESUBMITTALS:
- 8-16-18/PARKING REQUEST
- 9-14-18/REVISED LAYOUT
- 10-17-18/COMMENTS 8-1-18
- 11-16-18/COMMENTS 11-7-18
- 
-