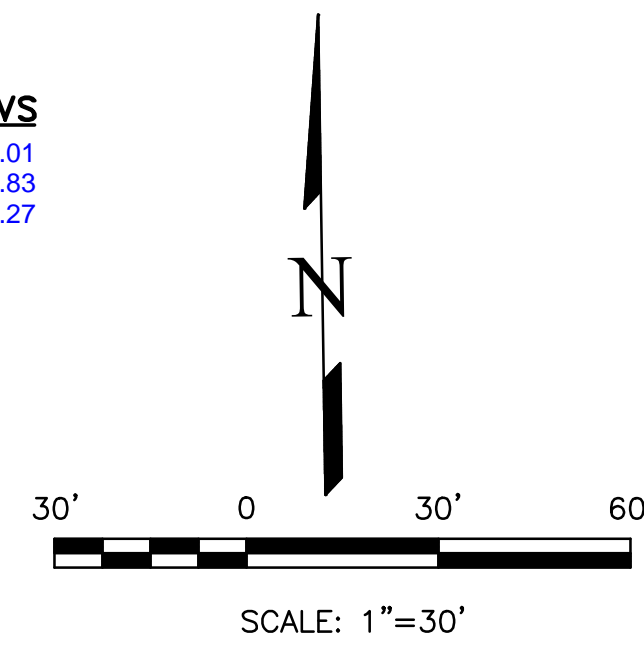


LEGEND

- BASIN DESIGNATION
- AREA IN BASIN (AC)
- DESIGN POINT
- BASIN BOUNDARY
- EXISTING 1' CONTOUR
- EXISTING 10' CONTOUR
- GROUND SURFACE FLOW DIRECTION
- ROAD AND DITCH FLOW DIRECTION
- CHAIN-LINK FENCE

POND WATER LEVEL ELEVATIONS

WQCV: 6483.95 6484.01
 EURV: 6483.70 6485.83
 100-YR: 6486.54 6486.27



ELECTRONIC STORAGE

GRADING AND EROSION CONTROL PLAN

GRADING DETAILS SHEET

NOVEMBER 2021

EXTENDED DETENTION BASIN AS-BUILT
 DANE FRANK, TERRA NOVA ENGINEERING, 2025/03/13

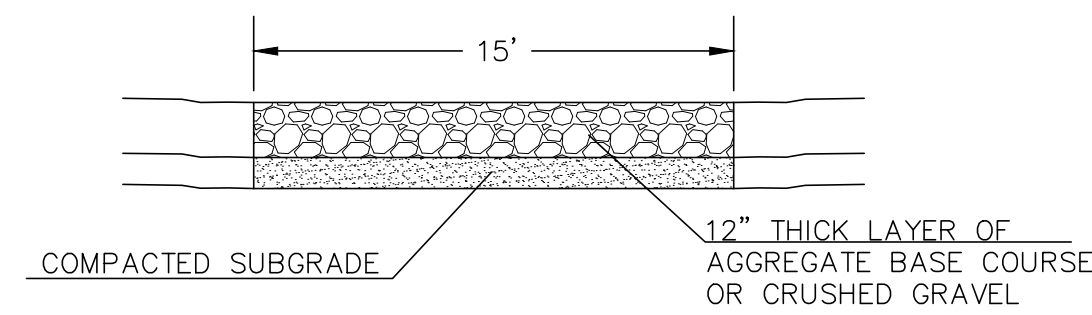


NOTES

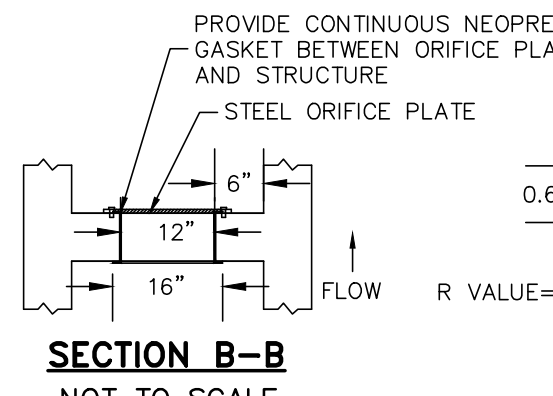
- ALL HDPE STORM PIPE IS TO BE SMOOTH INTERIOR PIPE.
- LARGE BLOCKS OF TEXT QUOTING STANDARD DRAWINGS OR DETAILS ARE INCLUDED AS A REQUIREMENT OF COUNTY REVIEWERS.

BENCHMARKS

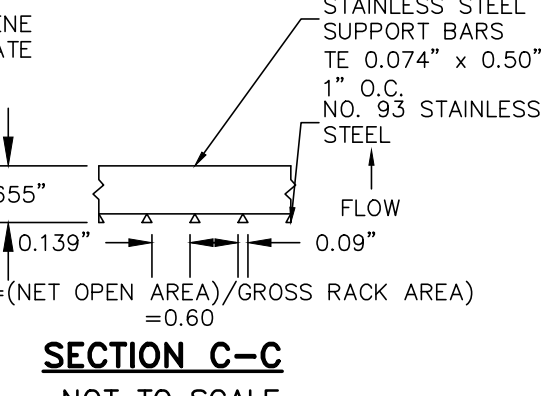
#5 REBAR WITH ORANGE PLASTIC CAP MARKED "CSAM, LLC PLS 32439", FLUSH WITH GROUND - ELEV.=6513.85 (NAVD-1988) [NORTHWEST PROPERTY CORNER]



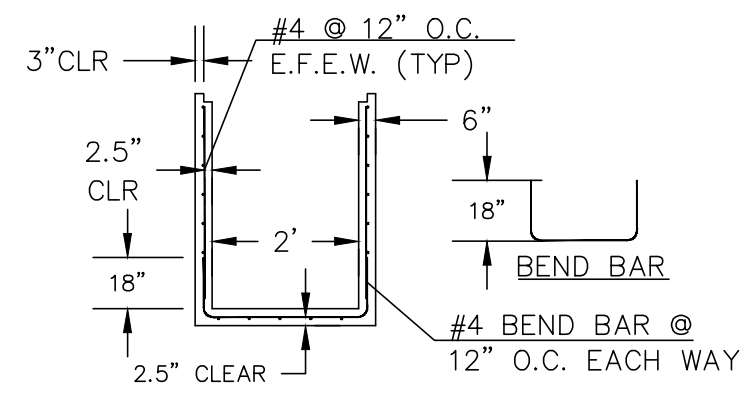
15' MAINTENANCE ACCESS ROAD SECTION NOT TO SCALE



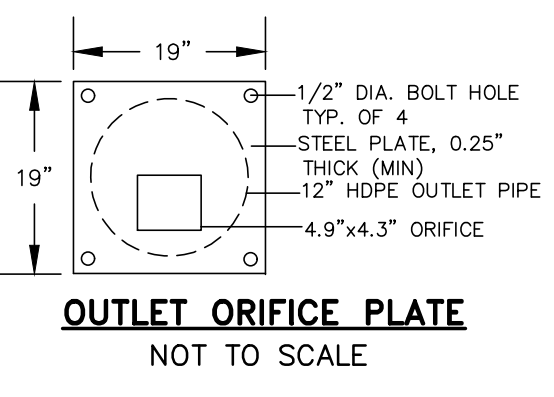
SECTION B-B NOT TO SCALE



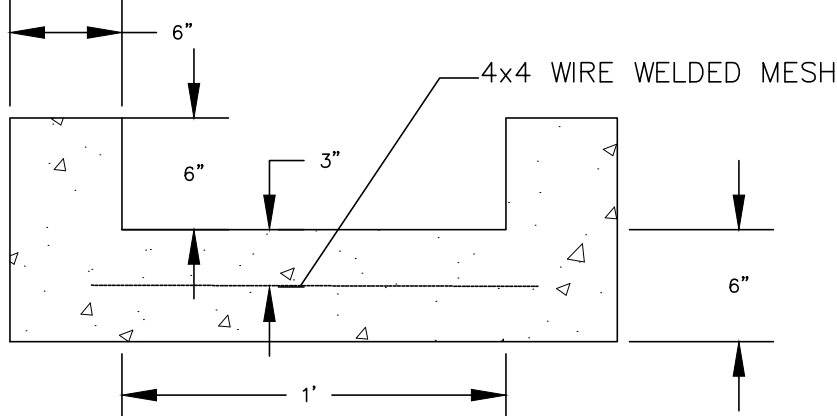
SECTION C-C NOT TO SCALE



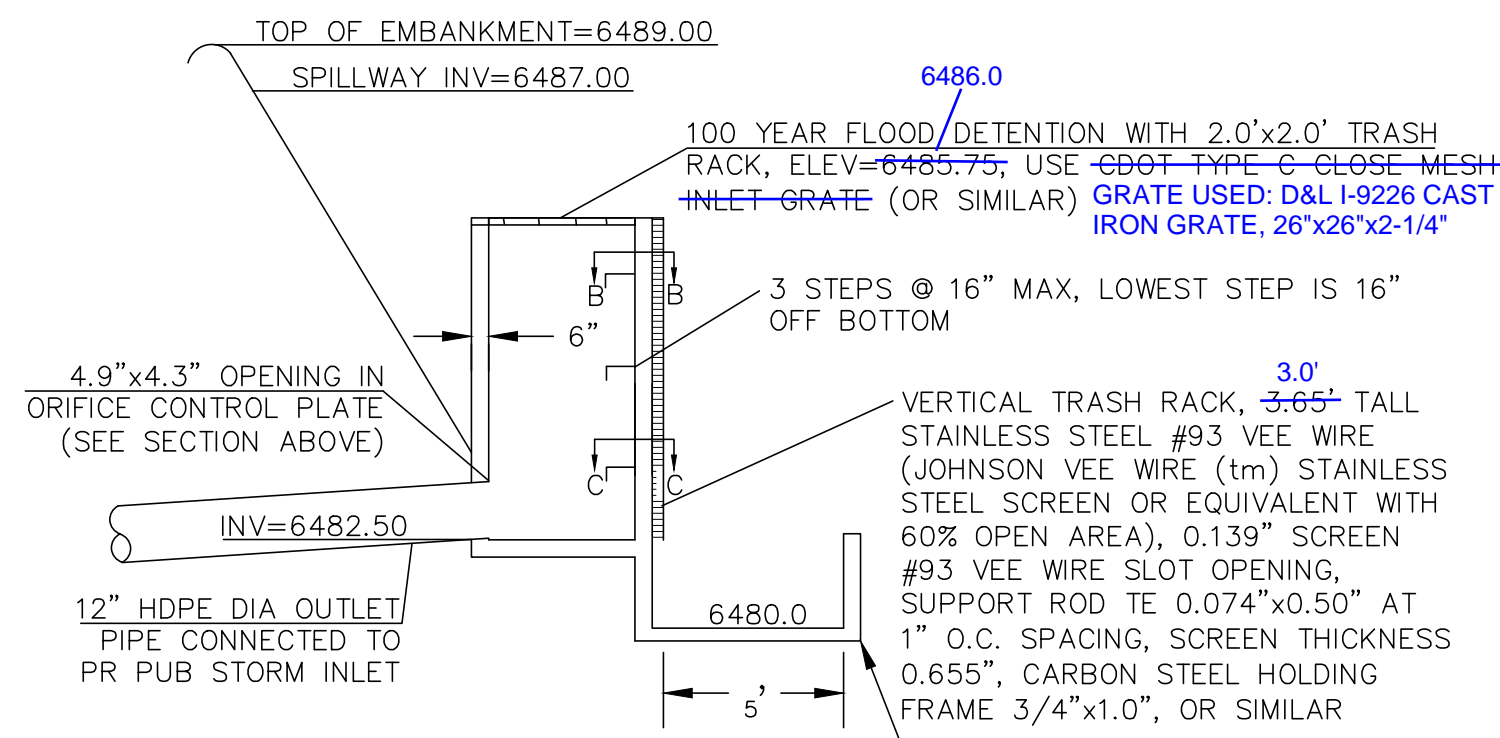
2'x2' OUTLET BOX STRUCTURAL DETAIL NOT TO SCALE



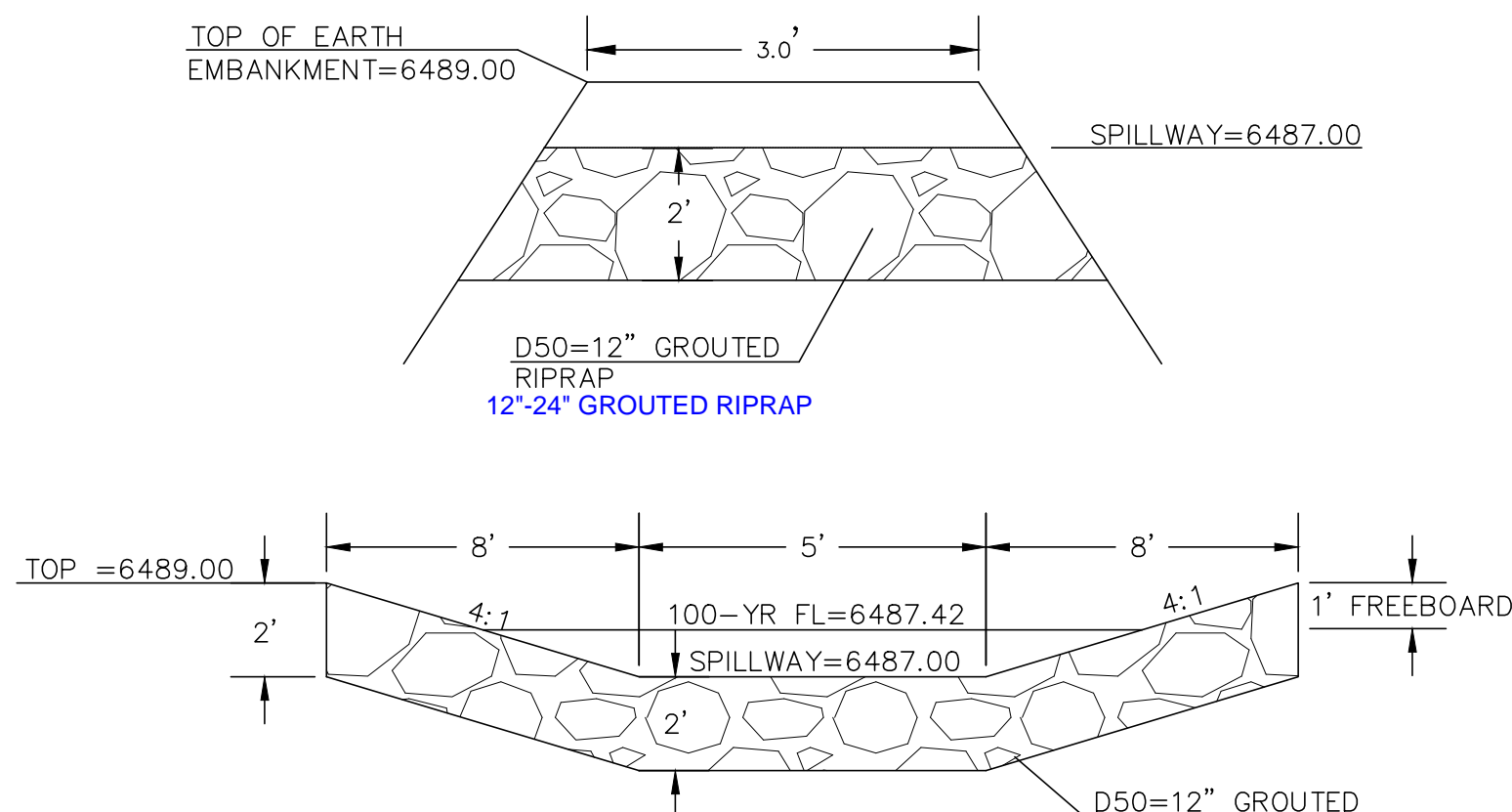
OUTLET ORIFICE PLATE NOT TO SCALE



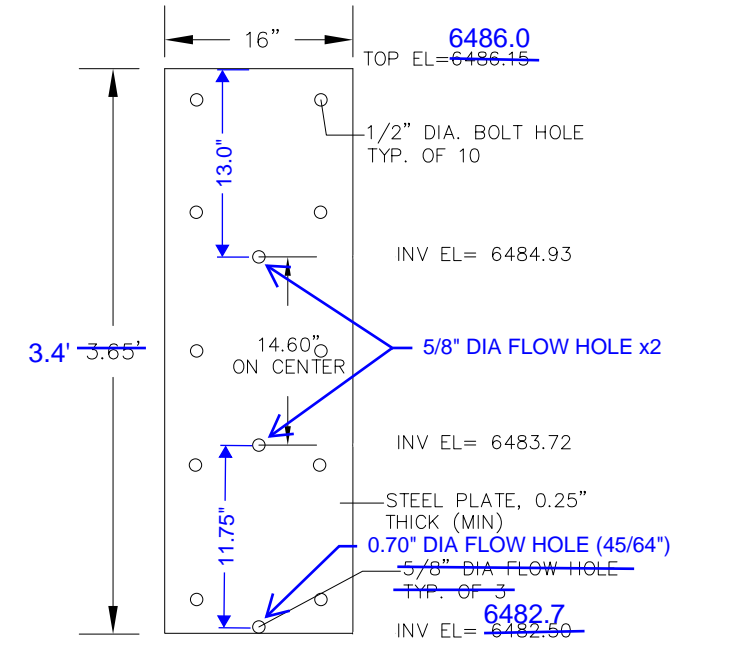
1' CONCRETE TRICKLE CHANNEL NOT TO SCALE



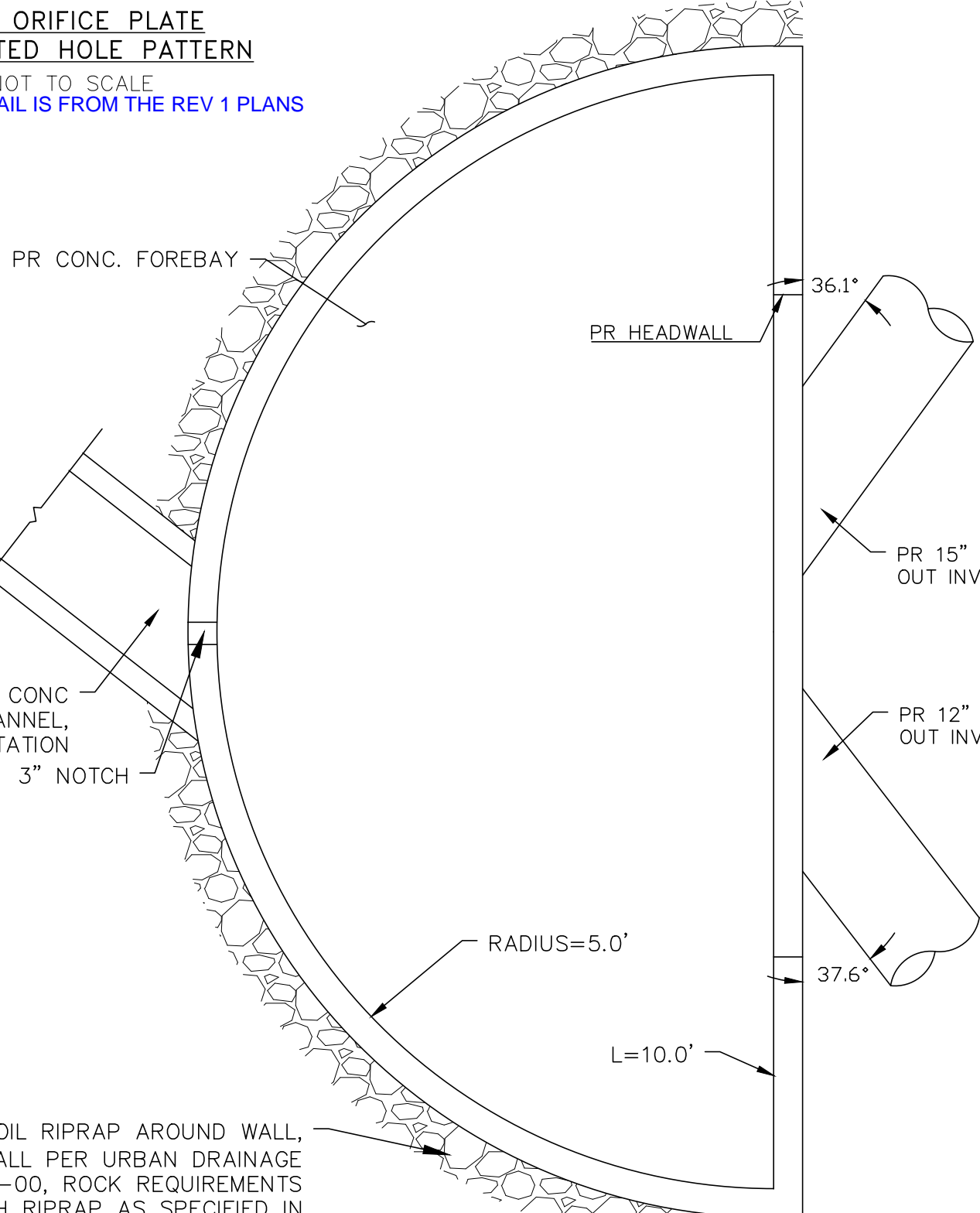
OUTLET STRUCTURE NOT TO SCALE



EDB EMERGENCY WEIR NOT TO SCALE

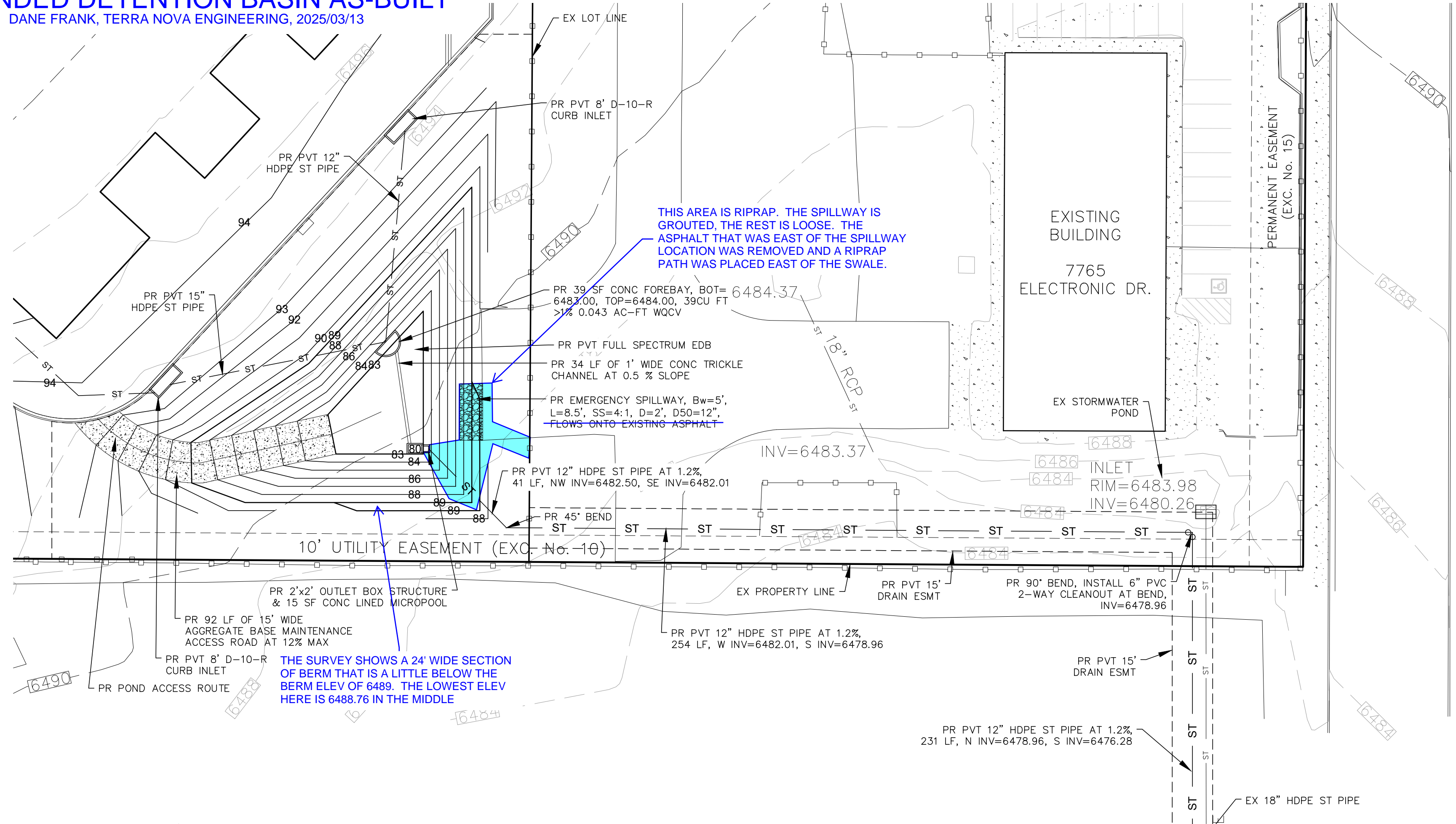


INLET ORIFICE PLATE PERFORATED HOLE PATTERN NOT TO SCALE. THIS DETAIL IS FROM THE REV 1 PLANS



FOREBAY PLAN VIEW NOT TO SCALE

PR D50=12" TYPE M SOIL RIPRAP AROUND WALL, 2' WIDE, 1' DEEP, INSTALL PER URBAN DRAINAGE SPEC SECTION 31-37-00, ROCK REQUIREMENTS ARE TO COMPLY WITH RIPRAP AS SPECIFIED IN ARTICLE MATERIALS, THE SOIL MATERIAL SHALL BE NATIVE OR TOPSOIL AND MIXED WITH SIXTY-FIVE PERCENT (65%) RIPRAP AND THIRTY FIVE PERCENT (35%) SOIL BY VOLUME. SOIL RIPRAP SHALL CONSIST OF A UNIFORM MIXTURE OF SOIL AND RIPRAP WITHOUT VOIDS

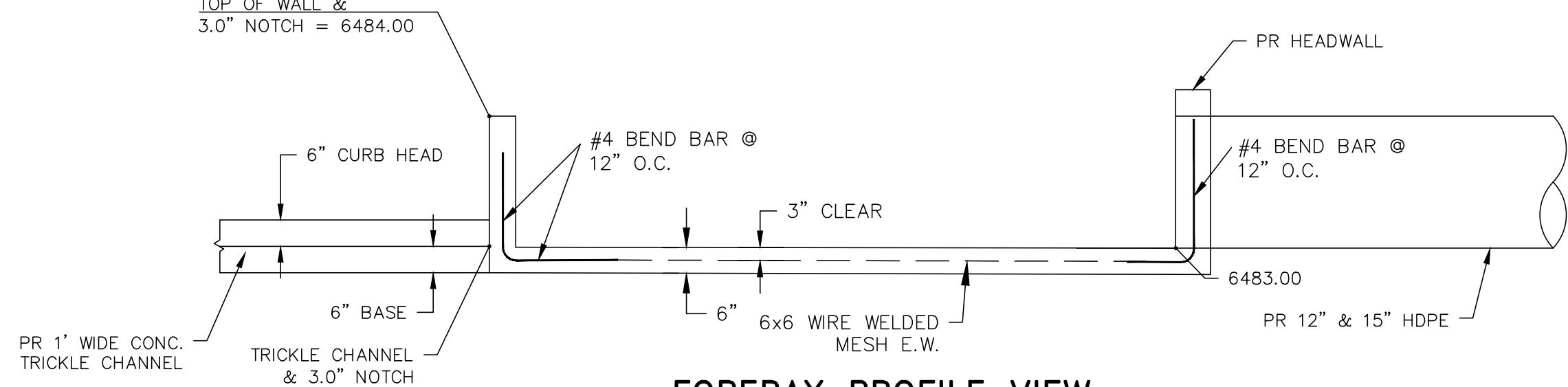


THIS DESIGN WAS PREPARED UNDER MY DIRECT SUPERVISION FOR AND ON BEHALF OF TERRA NOVA ENGINEERING, INC.

Dane Frank
 DANE FRANK
 COLORADO P.E. # 50207

AS-BUILT NOTES

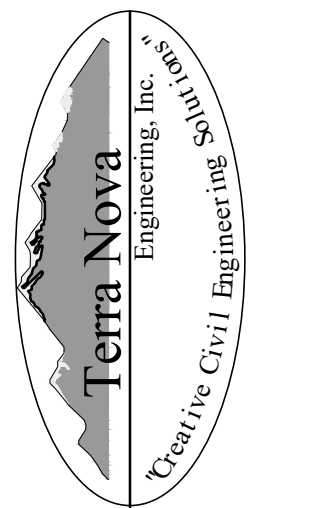
- AS-BUILT REDLINES ARE SHOWN IN BLUE.
- THE FINAL GRADING WAS A LITTLE DIFFERENT THAN THE DESIGN, AND THE TOP OF THE OUTLET STRUCTURE WAS BUILT 6" HIGH. CHECKING THE AS-BUILT NUMBERS WITH THE DESIGN SPREADSHEET SHOWS THE GRADING AND OUTLET STRUCTURE TOP WILL FUNCTION AS INTENDED, WITH THE WATER SURFACE ELEVATIONS CHANGING A LITTLE.
- THE BOTTOM ORIFICE ON THE INLET ORIFICE PLATE IS BUILT 0.2' HIGH. THE TOP TWO ORIFICES HAD TO BE REDRILLED AND THE CONTRACTOR LEFT THE BOTTOM ORIFICE HIGH DUE TO THE DESIGN ELEVATION HAVING TO GO THROUGH THE CONCRETE AND STEEL OF THE OUTLET STRUCTURE. THE BOTTOM ORIFICE WAS UPSIZED TO ADJUST FLOW FOR THE HIGHER ELEVATION. THE DESIGN SPREADSHEET SHOWS THIS ORIFICE LAYOUT CAUSES THE DRAIN TIMES TO BE: WQCV 40 HOURS, EURV 74 HOURS, 2 YEAR 64 HOURS, 5 YEAR 72 HOURS, 10 YEAR 77 HOURS, 25 YEAR 80 HOURS, 50 YEAR 79 HOURS, 100 YEAR 78 HOURS, AND 500 YEAR 77 HOURS. THE POND IS SHOWN TO STILL HAVE ADEQUATE STORAGE CAPACITY AND FREEBOARD IN THIS CONDITION.



FOREBAY PROFILE VIEW NOT TO SCALE

NO.	REVISIONS	DESCRIPTION	DATE
1	ADD OFFSITE PIPE TO DISTURBED AREA	11/03/21	

PREPARED FOR:
 D. STEFANO-BUILDING &...
 ATTN: DAVID STEFANO
 520 W 21ST ST, G-2 #710
 NORFOLK, CA 94557
 757.333.3144



721 S. ZABO STREET
 COLORADO SPRINGS, CO 80904
 OFFICE: 719-635-6422
 FAX: 719-635-6426
 www.tneng.com

ELECTRONIC STORAGE
 PROPOSED DRAINAGE MAP
 PROPOSED DRAINAGE MAP

DESIGNED BY	DLF
DRAWN BY	DLF
CHECKED BY	LD
H-SCALE	AS SHOWN
V-SCALE	N/A
JOB NO.	1971.00
DATE ISSUED	11/03/21
SHEET NO.	4 OF 8

COUNTY PRJ #: PPR-20-020
 EPC 11/29/21

N:\jobs\1971.00\Drawings\197100 GEC.dwg, 11/3/2021 8:58:53 AM