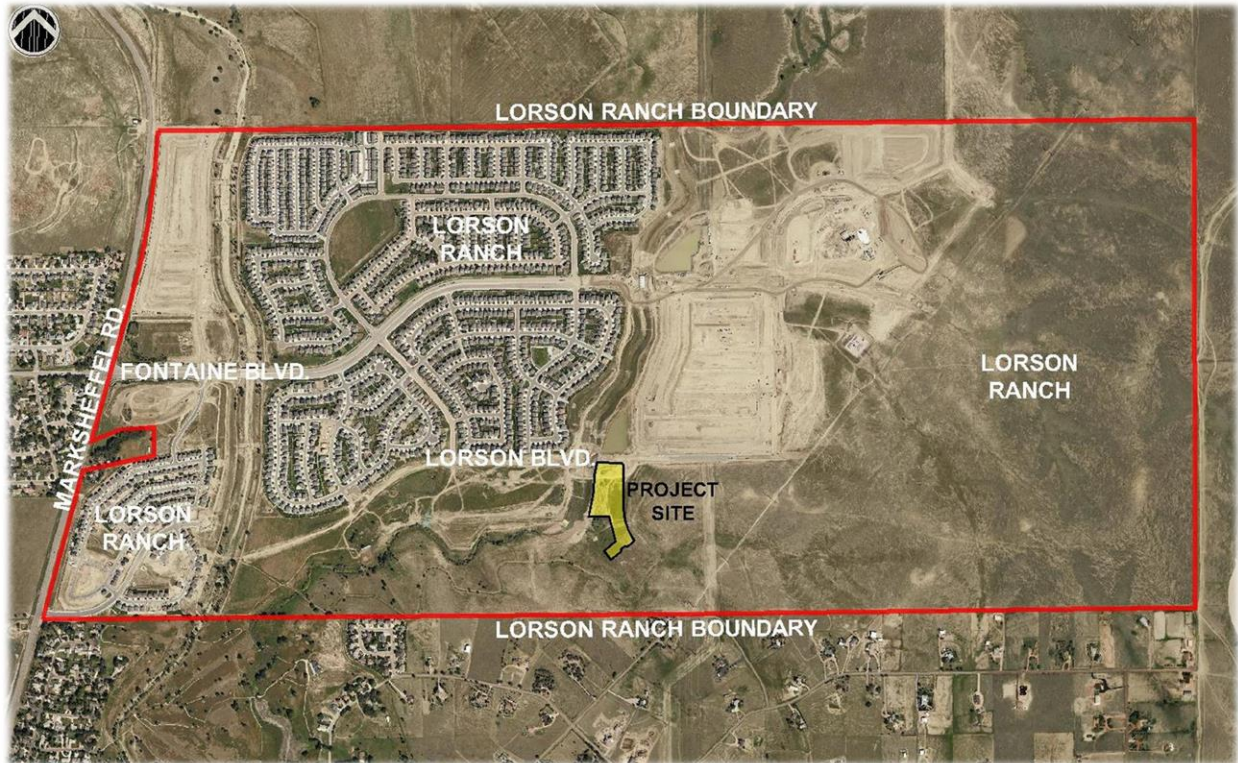


CREEKSIDE AT LORSON RANCH FILING NO. 2

Wildlife Report

May 02, 2022



PREPARED FOR:

Lorson LLC et/ al
212 N. Wahsatch Ave., Suite 301
Colorado Springs, CO 80903

PREPARED BY:

Matrix Design Group
2435 Research Parkway, Suite 300
Colorado Springs, CO 80920

Site Location, Size, Zoning:

The Creekside at Lorson Ranch Filing No. 2 project is 6.01 acres located within the southern portion of Lorson Ranch between the Jimmy Camp Creek east tributary and the eastern Lorson Ranch PUD boundary line. With a combined PUD/ Preliminary Plan submittal, the proposed Creekside project will be a continuation of the Lorson Ranch development. The site is currently zoned PUD with a density cap of 7-10 DU/ Acre. The Lorson Ranch Minor Sketch Plan Amendment, approved on April 21, 2016, depicts RM (Residential Medium 7-10 DU/ Acre). The parcel is currently vacant. The proposed PUDSP application submittal includes 38 new single family lots on 6.01 acres.

Wildlife and Migratory Birds

Proposed landscaping will include low-water use plant material, and where possible, the plant material will be native to the Colorado Springs region.

The Colorado Division of Wildlife note the following as also present in the area.

- Prairie Dog
- Mule and White Tailed Deer
- Pronghorn Antelope
- Fox species
- Coyote
- Rabbits
- Raptors
- Songbirds
- Numerous Small Mammals

Due to the construction activity and adjoining residential developments, it is not anticipated that either application will have significant impacts on wildlife in the area.

The U.S. Fish and Wildlife Service's IPaC mapper and website database (<https://ecos.fws.gov/ipac/>) was used to determine the potential of migratory birds within the area. The IPaC mapper listed 5 migratory birds that may be affected by the Creekside at Lorson Ranch Filing No. 2; however, this list may also include birds occurring outside this area's FWS office jurisdiction. Breeding migratory birds do receive statutory protection; however, the site contains very few if any trees. There is potential for vegetation to be reestablished along the banks of the Jimmy Camp Creek which could introduce additional bird habitat. In addition, there are no critical habitats or rare/ threatened species found to be present on the site.

Preble's Meadow Jumping Mouse

This development is not within the Preble's Meadow Jumping Mouse Critical Habitat Area per the U.S. Fish and Wildlife Service's IPaC mapper.

