

PROPERTY DETAILS

Existing 5 bed residence
Future 3 bed aux. residence
5 Acre property.

BENCHMARKS

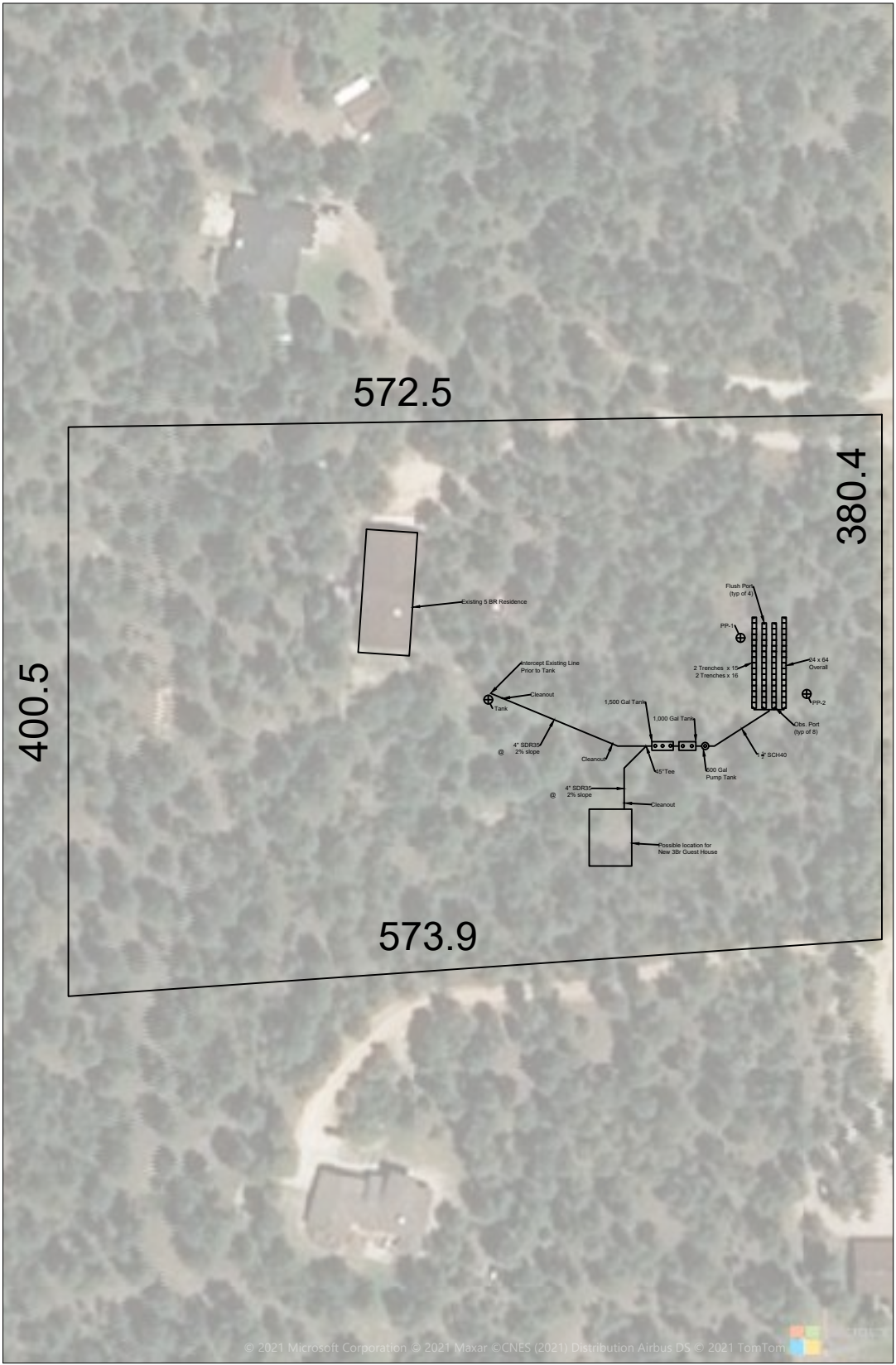
Existing Tank 7374'
Profile Pit 1 7367'
Profile Pit 2 7364'

CALCULATIONS

5+3 Beds = 14 persons = 1,050 Gal/day
Soil Type = 1
LTAR = 0.8.
 $A = 1050 / 0.8 = 1313 \text{ sqft}$
Table 10-2 reduction - 0.8 press. trench
Table 10-3 reduction - 0.7 chambers
Reduced area = 736 sqft
For 12 sqft Quick-4 chambers = 62
2 rows of 15 and 2 rows of 16 chambers

SPECIFICATIONS

Septic Tank - 2,500 Gallon precast or poly
Two tanks in series are acceptable if both residences enter the first tank.
Pump Tank - 500 Gallon Infiltrator Systems IM-540, or equal.
Pump - Orenco PF3005; 30 GPM @20 TDH, or equal.
Controller - Orenco Triple Float, SJE Rhombus, or equal.
Piping from Residences to Tank - 4" SDR35 @2% slope (min).
Piping between Tanks - 4" SDR35
Piping from pump tank to manifold and laterals - 1 1/2" SCH40.
Drill orifice holes 1/8" 4'OC alternate up/down.
Set dosage for 75-100 gals.
Set floats 3', 4' and 4'4".
Excavate 2-3'. Place chambers on leveled surface. Cover with 12" rock-free fill.




GENERAL INSTALLATION NOTES

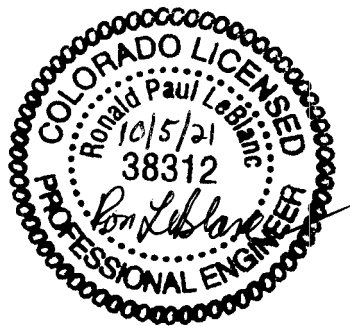
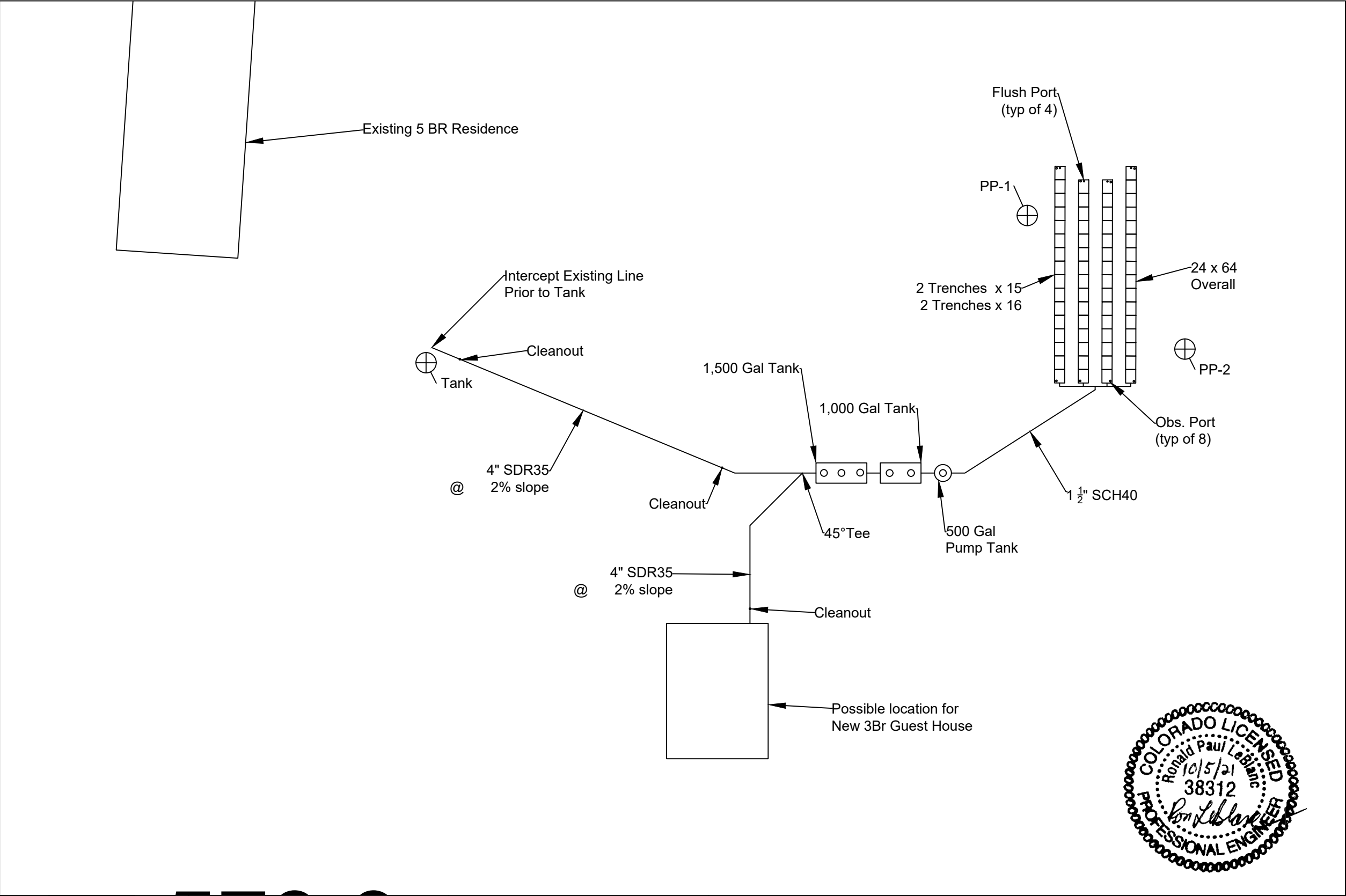
Construction shall be per applicable local plumbing and electrical codes.
Install cleanout within 5 feet of structure.
Install cleanouts every 100 feet in gravity lines
Install cleanouts in gravity lines if change of direction exceed 135 degrees.
Contractor or homeowner to verify all setbacks and obtain utility clearances.
Never allow runoff across Soil Treatment Area (STA).
Adjustment of locations shown is permitted, check with Engineer for prior approval.


GENERAL MAINTENANCE NOTES

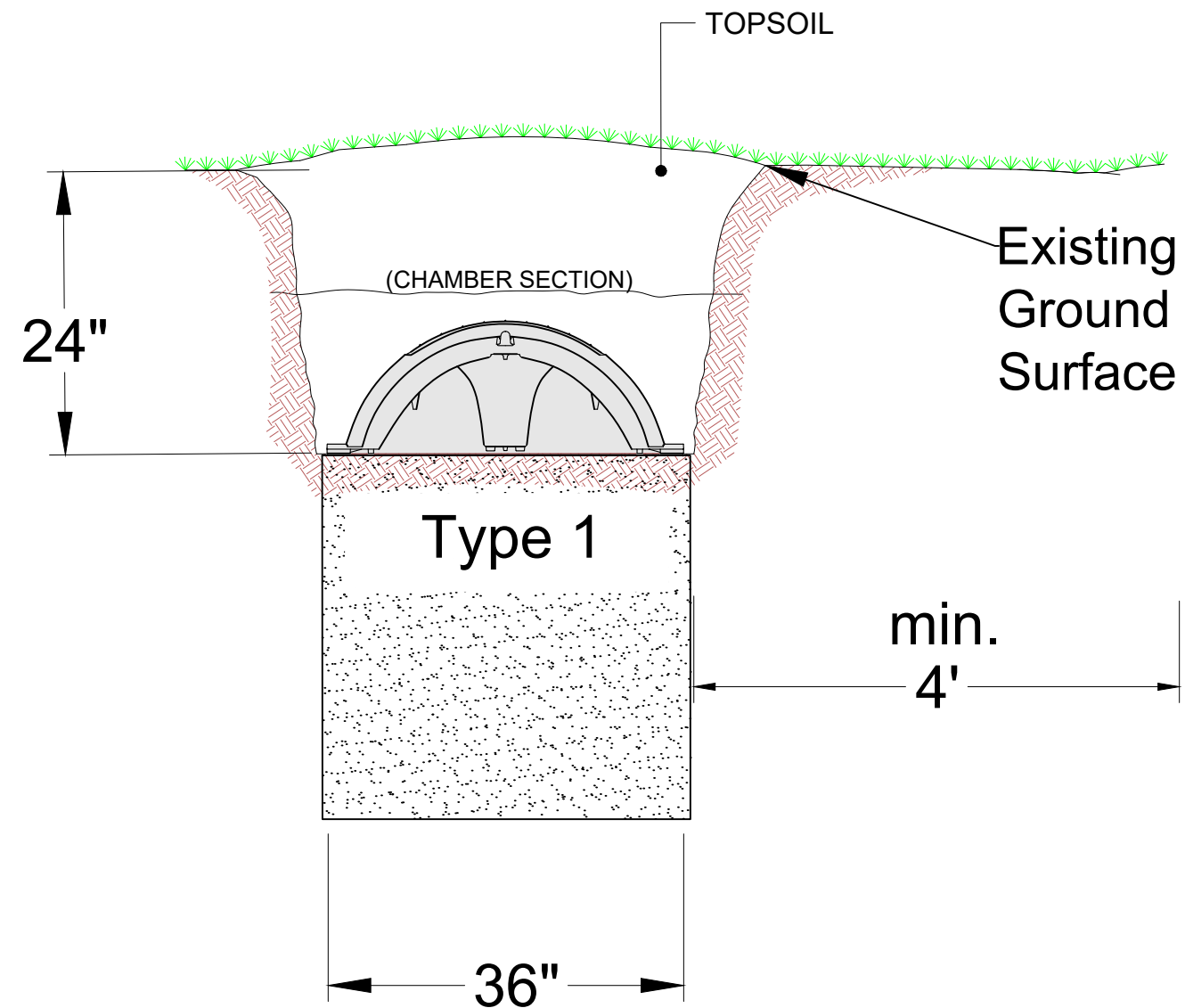
Design and proper installation cannot guarantee proper performance of the system, given unknown use and future site conditions.
Onsite Wastewater Treatment Systems are only suited for domestic waste, industrial chemicals will cause premature failure.
Do not allow cooking oils, drain cleaner, or excess food solids from garbage disposals into OWTS.
Some water treatment systems produce a waste stream that will cause premature failure.
Do not allow any hooved animal or vehicular traffic over STA.
Do not plant trees or shrubs over STA.




	Innovative Process Engineering, PLLC	14330 Chalet Lane	SITE PLAN
		El Paso County, CO	
	Monument, CO 80132	October 5, 2021	
		Project 21222	



	Innovative Process Engineering, PLLC	14330 Chalet Lane	SITE DETAIL
	Monument, CO 80132	El Paso County, CO	
		October 5, 2021	
		Project 21222	



	Innovative Process Engineering, PLLC		14330 Chalet Lane	Trench Section
	Monument, CO 80132		El Paso County, CO	
			October 5, 2021	Project 21222

Pump Selection for a Pressurized System - Single Family Residence Project

14330 Chalet Ln / 21222

Parameters

Discharge Assembly Size	2.00	inches
Transport Length	50	feet
Transport Pipe Class	40	
Transport Line Size	1.50	inches
Distributing Valve Model	None	
Max Elevation Lift	5	feet
Manifold Length	20	feet
Manifold Pipe Class	40	
Manifold Pipe Size	1.50	inches
Number of Laterals per Cell	4	
Lateral Length	64	feet
Lateral Pipe Class	40	
Lateral Pipe Size	1.50	inches
Orifice Size	1/8	inches
Orifice Spacing	4	feet
Residual Head	5	feet
Flow Meter	None	inches
'Add-on' Friction Losses	5	feet

Calculations

Minimum Flow Rate per Orifice	0.43	gpm
Number of Orifices per Zone	68	
Total Flow Rate per Zone	29.5	gpm
Number of Laterals per Zone	4	
% Flow Differential 1st/Last Orifice	0.8	%
Transport Velocity	4.7	fps

Frictional Head Losses

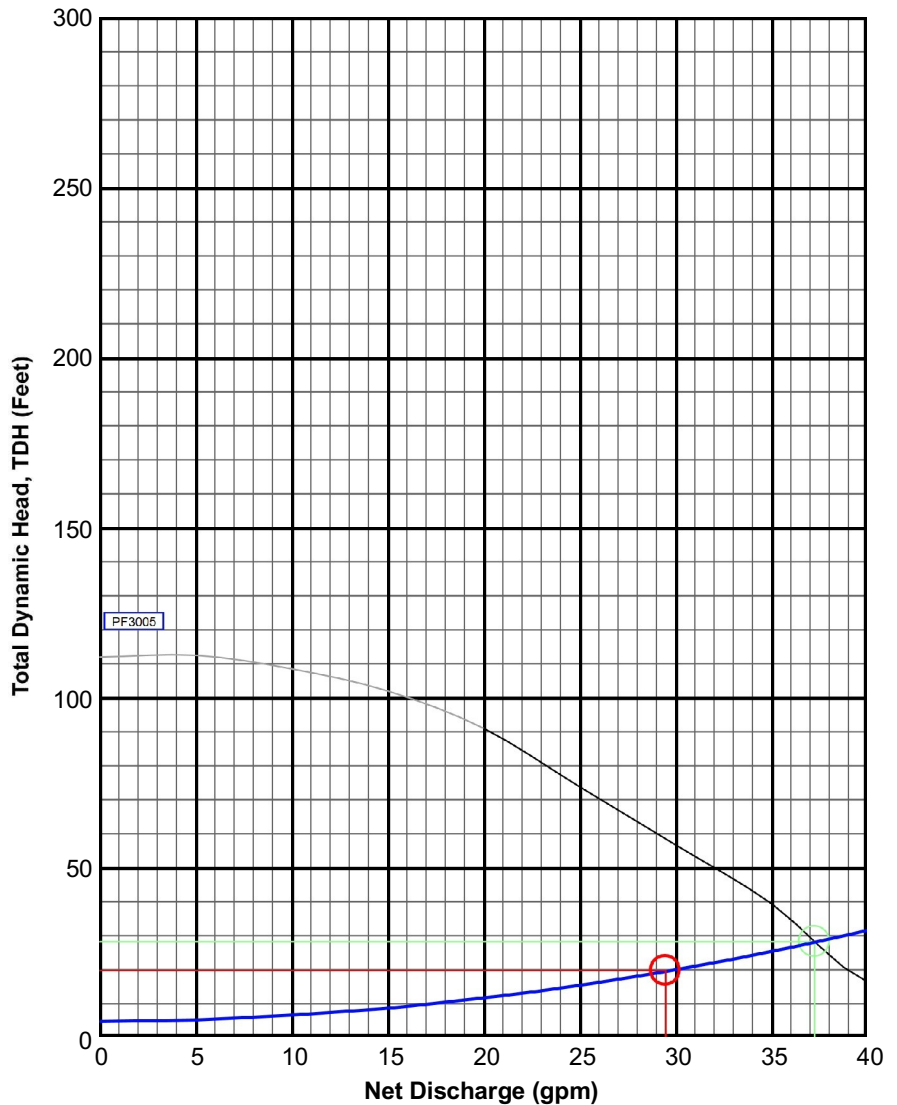
Loss through Discharge	1.7	feet
Loss in Transport	2.5	feet
Loss through Valve	0.0	feet
Loss in Manifold	0.3	feet
Loss in Laterals	0.1	feet
Loss through Flowmeter	0.0	feet
'Add-on' Friction Losses	5.0	feet

Pipe Volumes

Vol of Transport Line	5.3	gals
Vol of Manifold	2.1	gals
Vol of Laterals per Zone	27.1	gals
Total Volume	34.5	gals

Minimum Pump Requirements

Design Flow Rate	29.5	gpm
Total Dynamic Head	19.7	feet



PumpData

PF3005 High Head Effluent Pump
30 GPM, 1/2HP
115/230V 1Ø 60Hz, 200V 3Ø 60Hz

Legend

System Curve:	—
Pump Curve:	—
Pump Optimal Range:	—
Operating Point:	○
Design Point:	○

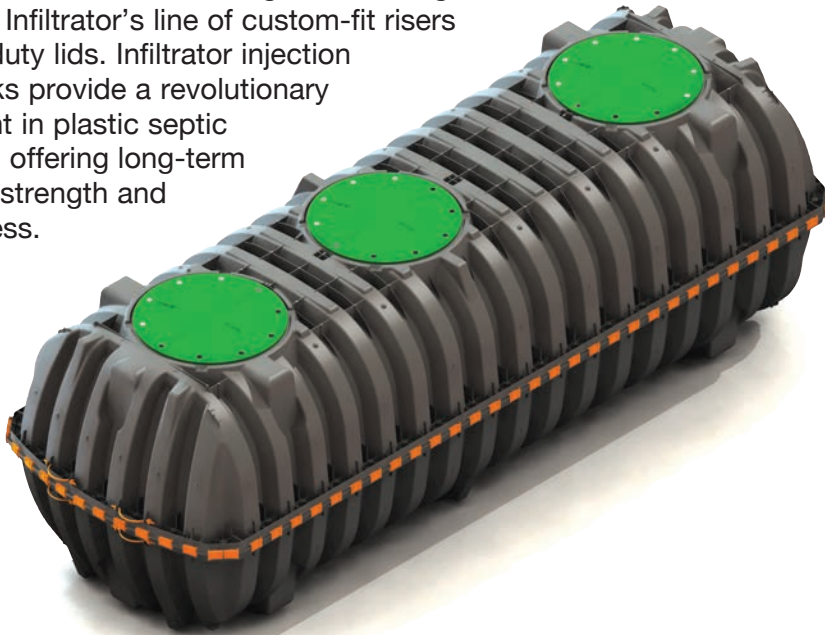




INFILTRATOR®
tanks

IM-1530

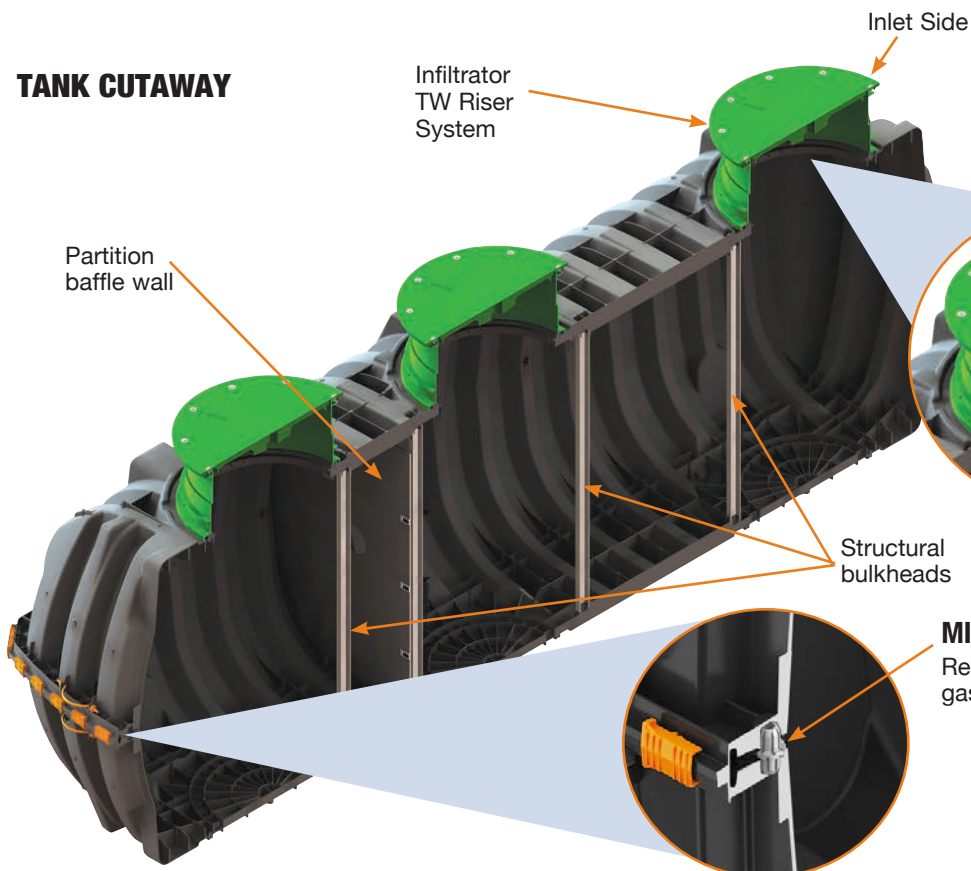
The Infiltrator IM-1530 is a lightweight strong and durable septic tank. This watertight tank design is offered with Infiltrator's line of custom-fit risers and heavy-duty lids. Infiltrator injection molded tanks provide a revolutionary improvement in plastic septic tank design, offering long-term exceptional strength and watertightness.



Features & Benefits

- Strong injection molded polypropylene construction
- Lightweight plastic construction and inboard lifting lugs allow for easy delivery and handling
- Integral heavy-duty green lids that interconnect with TW™ risers and pipe riser solutions
- Structurally reinforced access ports eliminate distortion during installation and pump-outs
- Reinforced structural ribbing and fiberglass bulkheads offer additional strength
- Can be installed with 6" to 48" of cover
- Can be pumped dry during pump-outs
- Suitable for use as a septic tank, pump tank, or rainwater (non-potable) tank
- No special water filling requirements are necessary
- The tank may be backfilled with suitable native soil. See installation instructions for guidance.

TANK CUTAWAY



HEAVY DUTY LID CUTAWAY

Reinforced 24" structural access port

MID-SEAM CUTAWAY

Reinforced water tight mid-seam gasketed connection



IM-1530 General Specifications and Illustrations

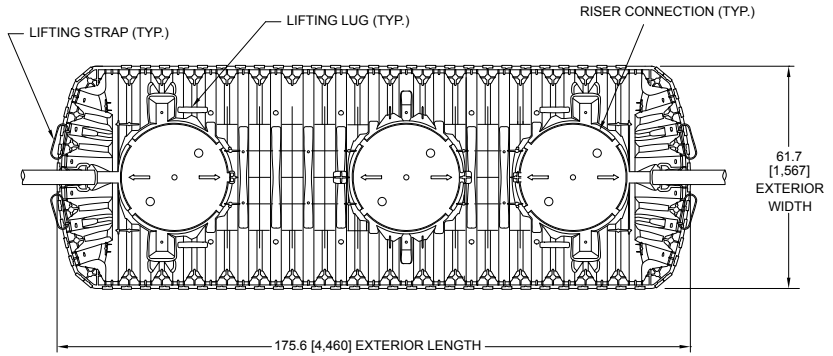
The IM-1530 is an injection molded two piece mid-seam plastic tank. The IM-1530 injection molded plastic design allows for a mid-seam joint that has precise dimensions for accepting an engineered EPDM gasket. Infiltrator's gasket design utilizes technology from the water industry to deliver proven means of maintaining a watertight seal.

The two-piece design is permanently fastened using a series of non-corrosive plastic alignment dowels and locking seam clips. The IM-1530 is assembled and sold through a network of certified Infiltrator distributors.

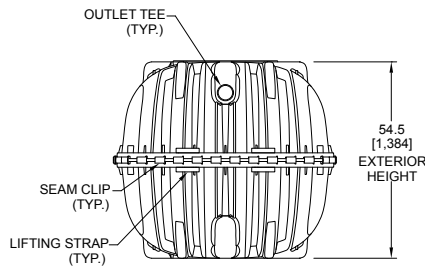
Must be backfilled and installed in accordance with Infiltrator Water Technologies, Infiltrator IM-Series Septic Tank General Installation Instructions and for shallow ground water conditions reference the Infiltrator IM-Series Tank Buoyancy Control Guidance.

Please visit www.infiltratorwater.com/images/pdf/ManualsGuides/TANK01.pdf for the latest information.

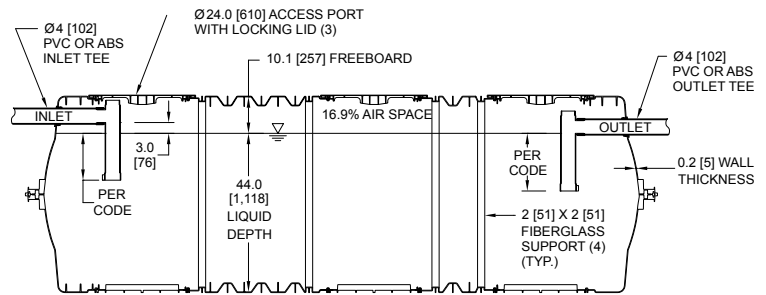
IM-1530	
Working Capacity	1537 gal (5818 L)
Total Capacity	1787 gal (6765 L)
Airspace	16.9%
Length	176" (4460 mm)
Width	62" (1567 mm)
Length-to-Width Ratio	2.8 to 1
Height	55" (1384 mm)
Liquid Level	44" (1118 mm)
Invert Drop	3" (76 mm)
Fiberglass Supports	4
Compartments	1 or 2
Maximum Burial Depth	48" (1219 mm)
Minimum Burial Depth	6" (152 mm)
Maximum Pipe Diameter	4" (100 mm)
Weight	501 lbs (228 kg)



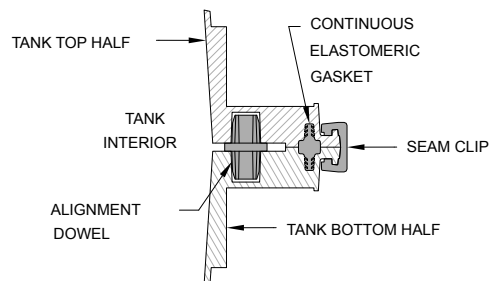
TOP VIEW



END VIEW



SIDE VIEW



MID-HEIGHT SEAM SECTION



4 Business Park Road
P.O. Box 768
Old Saybrook, CT 06475
860-577-7000 • Fax 860-577-7001
1-800-221-4436
www.infiltratorwater.com

U.S. Patents: 4,759,661; 5,017,041; 5,156,488; 5,336,017; 5,401,116; 5,401,459; 5,511,903; 5,716,163; 5,588,778; 5,839,844 Canadian Patents: 1,329,959; 2,004,564 Other patents pending. Infiltrator, Equalizer, Quick4, and SideWinder are registered trademarks of Infiltrator Water Technologies. Infiltrator is a registered trademark in France. Infiltrator Water Technologies is a registered trademark in Mexico. Contour, MicroLeaching, PolyTuff, ChamberSpacer, MultiPort, PosiLock, QuickCut, QuickPlay, SnapLock and StraightLock are trademarks of Infiltrator Water Technologies. PolyLok is a trademark of PolyLok, Inc. TUF-TITE is a registered trademark of TUF-TITE, INC. Ultra-Rib is a trademark of IPEX Inc.

© 2014 Infiltrator Water Technologies, LLC. All rights reserved. Printed in U.S.A.

IM21 1116

Contact Infiltrator Water Technologies' Technical Services Department for assistance at 1-800-221-4436

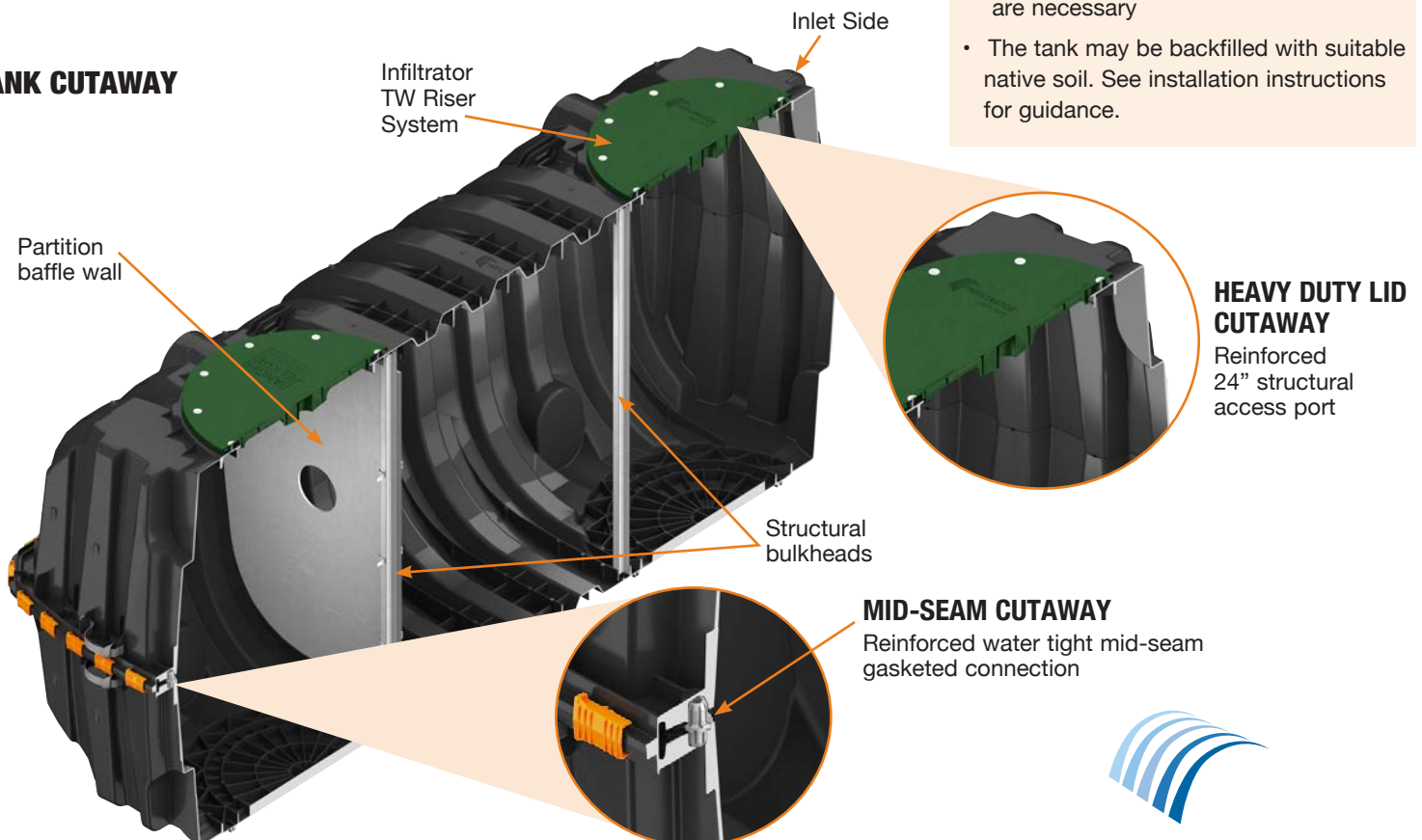


The Infiltrator IM-1060 is a lightweight strong and durable septic tank. This watertight tank design is offered with Infiltrator's line of custom-fit risers and heavy-duty lids. Infiltrator injection molded tanks provide a revolutionary improvement in plastic septic tank design, offering long-term exceptional strength and watertightness.

Features & Benefits

- Strong injection molded polypropylene construction
- Lightweight plastic construction and inboard lifting lugs allow for easy delivery and handling
- Integral heavy-duty green lids that interconnect with TW™ risers and pipe riser solutions
- Structurally reinforced access ports eliminate distortion during installation and pump-outs
- Reinforced structural ribbing and fiberglass bulkheads offer additional strength
- Can be installed with 6" to 48" of cover
- Can be pumped dry during pump-outs
- Suitable for use as a septic tank, pump tank, or rainwater (non-potable) tank
- No special water filling requirements are necessary
- The tank may be backfilled with suitable native soil. See installation instructions for guidance.

TANK CUTAWAY



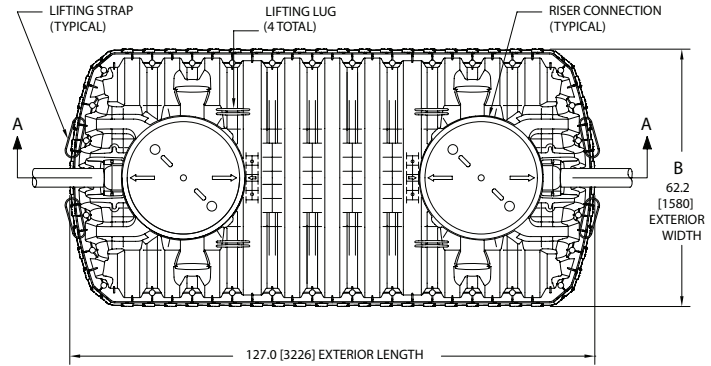
IM-1060 General Specifications and Illustrations

The IM-1060 is an injection molded two piece mid-seam plastic tank. The IM-1060 injection molded plastic design allows for a mid-seam joint that has precise dimensions for accepting an engineered EPDM gasket. Infiltrator's gasket design utilizes technology from the water industry to deliver proven means of maintaining a watertight seal. The two-piece design is permanently fastened using a series of non-corrosive plastic alignment dowels and locking seam clips. The IM-1060 is assembled and sold through a network of certified Infiltrator distributors.

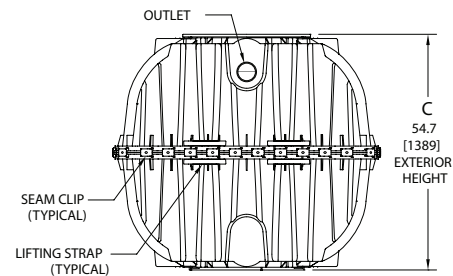
Must be backfilled and installed in accordance with Infiltrator Water Technologies, Infiltrator IM-Series Septic Tank General Installation Instructions and for shallow ground water conditions reference the Infiltrator IM-Series Tank Buoyancy Control Guidance.

Please visit www.infiltratorwater.com/images/pdf/ManualsGuides/TANK01.pdf for the latest information.

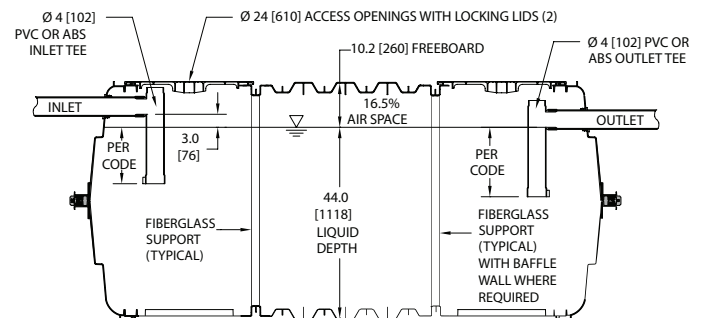
IM-1060	
Working Capacity	1094 gal (4141 L)
Total Capacity	1287 gal (4872 L)
Airspace	16.5%
Length	127" (3226 mm)
Width	62.2" (1580 mm)
Length-to-Width Ratio	2.3 to 1
Height	54.7" (1389 mm)
Liquid Level	44" (1118 mm)
Invert Drop	3" (76 mm)
Fiberglass Supports	2
Compartments	1 or 2
Maximum Burial Depth	48" (1219 mm)
Minimum Burial Depth	6" (152 mm)
Maximum Pipe Diameter	6" (152 mm)
Weight	320 lbs (145 kg)



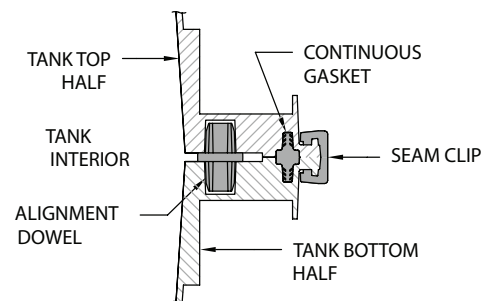
TOP VIEW



END VIEW



SIDE VIEW



MID-HEIGHT SEAM SECTION



4 Business Park Road
P.O. Box 768
Old Saybrook, CT 06475
860-577-7000 • Fax 860-577-7001
1-800-221-4436
www.infiltratorwater.com

U.S. Patents: 4,759,661; 5,017,041; 5,156,488; 5,336,017; 5,401,116; 5,401,459; 5,511,903; 5,716,163; 5,588,778; 5,839,844 Canadian Patents: 1,329,959; 2,004,564 Other patents pending. Infiltrator, Equalizer, Quick4, and SideWinder are registered trademarks of Infiltrator Water Technologies. Infiltrator is a registered trademark in France. Infiltrator Water Technologies is a registered trademark in Mexico. Contour, MicroLeaching, PolyTuff, ChamberSpacer, MultiPort, PosiLock, QuickCut, QuickPlay, SnapLock and StraightLock are trademarks of Infiltrator Water Technologies. PolyLok is a trademark of PolyLok, Inc. TUF-TITE is a registered trademark of TUF-TITE, INC. Ultra-Rib is a trademark of IPEX Inc.

© 2016 Infiltrator Water Technologies, LLC. All rights reserved. Printed in U.S.A.

IM02 1116

Contact Infiltrator Water Technologies' Technical Services Department for assistance at 1-800-221-4436

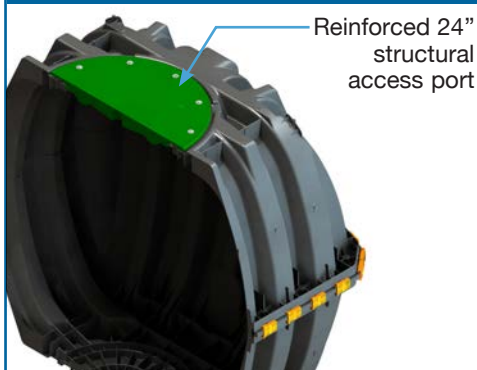


The Infiltrator IM-540 is a lightweight strong and durable septic/pump tank. This watertight tank design is offered with Infiltrator's line of custom-fit risers and heavy-duty lids. Infiltrator injection molded tanks provide a revolutionary improvement in plastic tank design, offering long-term exceptional strength and watertightness.

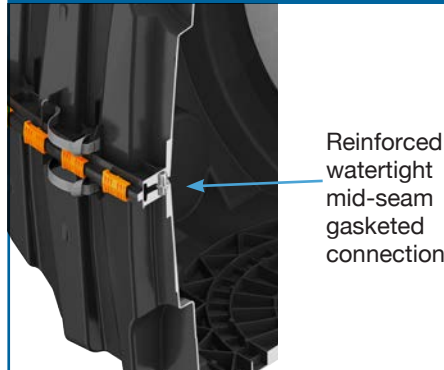
Features & Benefits

- Strong injection molded polypropylene construction
- Lightweight plastic construction and inboard lifting lugs allow for easy delivery and handling
- Integral heavy-duty green lids that interconnect with TW™ risers and pipe riser solutions
- Structurally reinforced access ports eliminate distortion during installation and pump-outs
- Reinforced structural ribbing offers additional strength
- Can be installed with 6" to 48" of cover
- Can be pumped dry during pump-outs
- Suitable for use as a pump tank or rainwater (non-potable) tank
- No special installation, backfill or water filling procedures are required
- No special water filling requirements are necessary
- The tank may be backfilled with suitable native soil. See installation instructions for guidance.

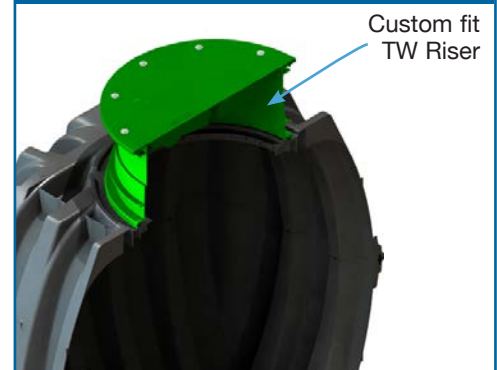
TANK CUTAWAY



MID-SEAM CUTAWAY



RISER CUTAWAY



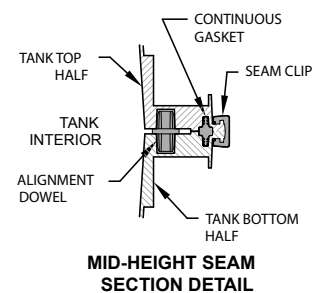
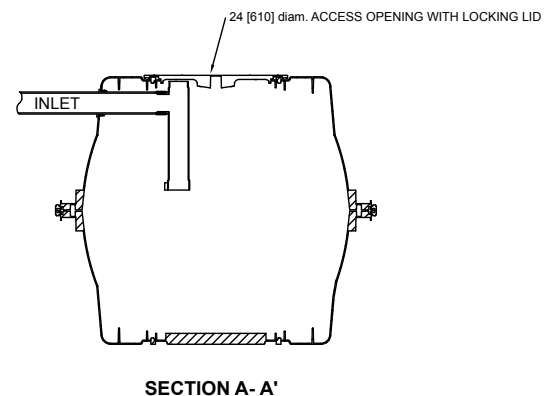
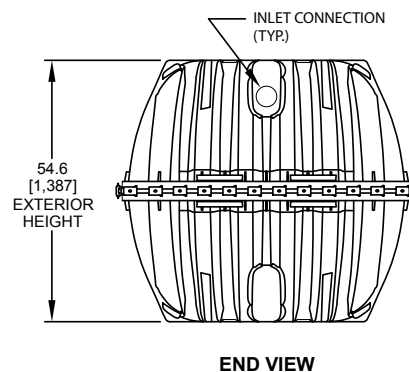
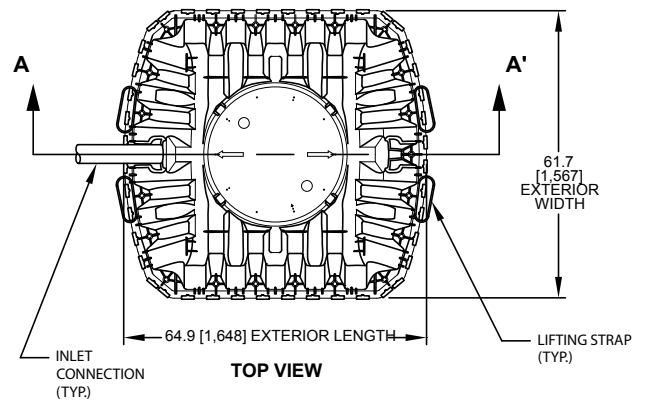
IM-540 General Specifications and Illustrations

The IM-540 is an injection molded two piece mid-seam plastic tank. The IM-540 injection molded plastic design allows for a mid-seam joint that has precise dimensions for accepting an engineered EPDM gasket. Infiltrator's gasket design utilizes technology from the water industry to deliver proven means of maintaining a watertight seal. The two-piece design is permanently fastened using a series of non-corrosive plastic alignment dowels and locking seam clips. The IM-540 is assembled and sold through a network of certified Infiltrator distributors.

Must be backfilled and installed in accordance with Infiltrator Water Technologies, Infiltrator IM-Series Septic Tank General Installation Instructions and for shallow ground water conditions reference the Infiltrator IM-Series Tank Buoyancy Control Guidance.

Please visit www.infiltratorwater.com/images/pdf/ManualsGuides/TANK01.pdf for the latest information.

IM-540	
Total Capacity	552 gal (2090 L)
Length	64.9" (1648 mm)
Width	61.7" (1567 mm)
Height	54.6" (1387 mm)
Maximum Burial Depth	48" (1219 mm)
Minimum Burial Depth	6" (152 mm)
Maximum Pipe Diameter	4" (100 mm)
Weight	169 lbs (77 kg)



4 Business Park Road
P.O. Box 768
Old Saybrook, CT 06475
860-577-7000 • Fax 860-577-7001
1-800-221-4436
www.infiltratorwater.com

U.S. Patents: 4,759,661; 5,017,041; 5,156,488; 5,336,017; 5,401,116; 5,401,459; 5,511,903; 5,716,163; 5,588,778; 5,839,844 Canadian Patents: 1,329,959; 2,004,564 Other patents pending. Infiltrator, Equalizer, Quick4, and SideWinder are registered trademarks of Infiltrator Water Technologies. Infiltrator is a registered trademark in France. Infiltrator Water Technologies is a registered trademark in Mexico. Contour, MicroLeaching, PolyTuff, ChamberSpacer, MultiPort, PosiLock, QuickCut, QuickPlay, SnapLock and StraightLock are trademarks of Infiltrator Water Technologies. PolyLok is a trademark of PolyLok, Inc. TUF-TITE is a registered trademark of TUF-TITE, INC. Ultra-Rib is a trademark of IPEX Inc.

© 2013 Infiltrator Water Technologies, LLC. All rights reserved. Printed in U.S.A.

IM11 1116

Contact Infiltrator Water Technologies' Technical Services Department for assistance at 1-800-221-4436

PF Series 60-Hz, 4-inch (100-mm) Submersible Effluent Pumps

Applications

Our 4-inch (100-mm) Submersible Effluent Pumps are designed to transport screened effluent (with low TSS counts) from septic tanks or separate dosing tanks. All our pumps are constructed of lightweight, corrosion-resistant stainless steel and engineered plastics; all are field-serviceable and repairable with common tools; 60-Hz PF Series models are CSA certified to the U.S. and Canadian safety standards for effluent pumps, meeting UL requirements.

Orencia's Effluent Pumps are used in a variety of applications, including pressurized drainfields, packed bed filters, mounds, aerobic units, effluent irrigation, effluent sewers, wetlands, lagoons, and more. These pumps are designed to be used with a Biotube® pump vault or after a secondary treatment system.



Powered by
Franklin Electric

Features/Specifications

To specify this pump for your installation, require the following:

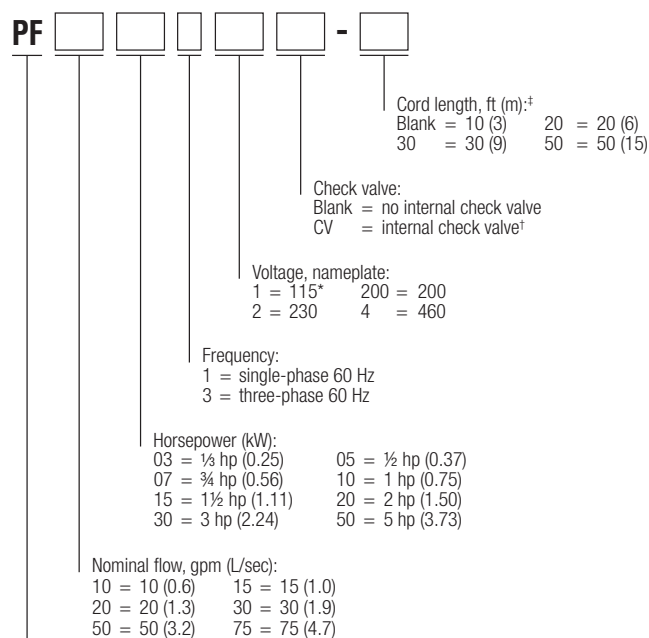
- Minimum 24-hour run-dry capability with no deterioration in pump life or performance*
- Patented 1/8-inch (3-mm) bypass orifice to ensure flow recirculation for motor cooling and to prevent air bind
- Liquid end repair kits available for better long-term cost of ownership
- TRI-SEAL™ floating impeller design on 10, 15, 20, and 30 gpm (0.6, 1.0, 1.3, and 1.9 L/sec) models; floating stack design on 50 and 75 gpm (3.2 and 4.7 L/sec) models
- Franklin Electric Super Stainless motor, rated for continuous use and frequent cycling
- Type SOOW 600-V motor cable

* Not applicable for 5-hp (3.73 kW) models

Standard Models

See specifications chart, pages 2-3, for a list of standard pumps. For a complete list of available pumps, call Orendo.

Product Code Diagram



Pump, PF Series

* ½-hp (0.37kW) only

† Available for 10 gpm (0.6 L/sec), 1/2 hp (0.37 kW) only

† Note: 20-ft cords are available only for single-phase pumps through 1½ hp.

Specifications

Pump Model	Design gpm (L/sec)	Horsepower (kW)	Phase	Nameplate voltage	Actual voltage	Design flow amps	Max amps	Impellers	Discharge size and material ¹	Length, in. (mm)	Min. liquid level, ² in. (mm)	Weight, ³ lb (kg)	Rated cycles/day
PF100511	10 (0.6)	0.50 (0.37)	1	115	120	12.7	12.7	6	1 ¼ in. GFP	23.0 (660)	16 (406)	26 (12)	300
PF100511CV	10 (0.6)	0.50 (0.37)	1	115	120	12.7	12.7	6	1 ¼ in. GFP	23.0 (660)	16 (406)	26 (12)	300
PF100512	10 (0.6)	0.50 (0.37)	1	230	240	6.3	6.3	6	1 ¼ in. GFP	23.0 (660)	16 (406)	26 (12)	300
PF10053200	10 (0.6)	0.50 (0.37)	3	200	208	3.8	3.8	6	1 ¼ in. GFP	23.0 (660)	16 (406)	26 (12)	300
PF100712 ^{4,5}	10 (0.6)	0.75 (0.56)	1	230	240	8.3	8.3	8	1 ¼ in. GFP	25.9 (658)	17 (432)	30 (14)	300
PF10073200 ^{4,5}	10 (0.6)	0.75 (0.56)	3	200	208	5.1	5.2	8	1 ¼ in. GFP	25.4 (645)	17 (432)	31 (14)	300
PF101012 ^{5,6}	10 (0.6)	1.00 (0.75)	1	230	240	9.6	9.6	9	1 ¼ in. GFP	27.9 (709)	18 (457)	33 (15)	100
PF10103200 ^{5,6}	10 (0.6)	1.00 (0.75)	3	200	208	5.5	5.5	9	1 ¼ in. GFP	27.3 (693)	18 (457)	37 (17)	300
PF102012 ^{5,6,7,8}	10 (0.6)	2.00 (1.49)	1	230	240	12.1	12.1	18	1 ¼ in. SS	39.5 (1003)	22 (559)	48 (22)	100
PF102032 ^{5,6,8}	10 (0.6)	2.00 (1.49)	3	230	240	7.5	7.6	18	1 ¼ in. SS	37.9 (963)	20 (508)	44 (20)	300
PF10203200 ^{5,6,8}	10 (0.6)	2.00 (1.49)	3	200	208	8.7	8.7	18	1 ¼ in. SS	37.9 (963)	20 (508)	44 (20)	300
PF150311	15 (1.0)	0.33 (0.25)	1	115	120	8.7	8.8	3	1 ¼ in. GFP	19.5 (495)	15 (380)	23 (10)	300
PF150312	15 (1.0)	0.33 (0.25)	1	230	240	4.4	4.5	3	1 ¼ in. GFP	19.5 (495)	15 (380)	23 (10)	300
PF200511	20 (1.3)	0.50 (0.37)	1	115	120	12.3	12.5	4	1 ¼ in. GFP	22.3 (566)	18 (457)	25 (11)	300
PF200512	20 (1.3)	0.50 (0.37)	1	230	240	6.4	6.5	4	1 ¼ in. GFP	22.5 (572)	18 (457)	26 (12)	300
PF20053200	20 (1.3)	0.50 (0.37)	3	200	208	3.7	3.8	4	1 ¼ in. GFP	22.3 (566)	18 (457)	26 (12)	300
PF201012 ^{4,5}	20 (1.3)	1.00 (0.75)	1	230	240	10.5	10.5	7	1 ¼ in. GFP	28.4 (721)	20 (508)	33 (15)	100
PF20103200 ^{4,5}	20 (1.3)	1.00 (0.75)	3	200	208	5.8	5.9	7	1 ¼ in. GFP	27.8 (706)	20 (508)	33 (15)	300
PF201512 ^{4,5}	20 (1.3)	1.50 (1.11)	1	230	240	12.4	12.6	9	1 ¼ in. GFP	34.0 (864)	24 (610)	41 (19)	100
PF20153200 ^{4,5}	20 (1.3)	1.50 (1.11)	3	200	208	7.1	7.2	9	1 ¼ in. GFP	30.7 (780)	20 (508)	35 (16)	300
PF300511	30 (1.9)	0.50 (0.37)	1	115	120	11.8	11.8	3	1 ¼ in. GFP	21.3 (541)	20 (508)	28 (13)	300
PF300512	30 (1.9)	0.50 (0.37)	1	230	240	6.2	6.2	3	1 ¼ in. GFP	21.3 (541)	20 (508)	25 (11)	300
PF30053200	30 (1.9)	0.50 (0.37)	3	200	208	3.6	3.6	3	1 ¼ in. GFP	21.3 (541)	20 (508)	25 (11)	300
PF300712	30 (1.9)	0.75 (0.56)	1	230	240	8.5	8.5	5	1 ¼ in. GFP	24.8 (630)	21 (533)	29 (13)	300
PF30073200	30 (1.9)	0.75 (0.56)	3	200	208	4.9	4.9	5	1 ¼ in. GFP	24.6 (625)	21 (533)	30 (14)	300
PF301012 ⁴	30 (1.9)	1.00 (0.75)	1	230	240	10.4	10.4	6	1 ¼ in. GFP	27.0 (686)	22 (559)	32 (15)	100
PF30103200 ⁴	30 (1.9)	1.00 (0.75)	3	200	208	5.8	5.8	6	1 ¼ in. GFP	26.4 (671)	22 (559)	33 (15)	300
PF301512 ^{4,5}	30 (1.9)	1.50 (1.11)	1	230	240	12.6	12.6	8	1 ¼ in. GFP	32.8 (833)	24 (610)	40 (18)	100
PF30153200 ^{4,5}	30 (1.9)	1.50 (1.11)	3	200	208	6.9	6.9	8	1 ¼ in. GFP	29.8 (757)	22 (559)	34 (15)	300
PF301534 ^{4,5}	30 (1.9)	1.50 (1.11)	3	460	480	2.8	2.8	8	1 ¼ in. GFP	29.5 (685)	22 (559)	34 (15)	300
PF302012 ^{5,6,7}	30 (1.9)	2.00 (1.49)	1	230	240	11.0	11.0	10	1 ¼ in. SS	35.5 (902)	26 (660)	44 (20)	100
PF30203200 ^{5,6}	30 (1.9)	2.00 (1.49)	3	200	208	9.3	9.3	10	1 ¼ in. SS	34.0 (864)	24 (610)	41 (19)	300
PF303012 ^{5,6,7,8}	30 (1.9)	3.00 (2.23)	1	230	240	16.8	16.8	14	1 ¼ in. SS	44.5 (1130)	33 (838)	54 (24)	100
PF303032 ^{5,6,8}	30 (1.9)	3.00 (2.23)	3	230	240	10.0	10.1	14	1 ¼ in. SS	44.3 (1125)	27 (686)	52 (24)	300
PF305012 ^{5,6,7,8}	30 (1.9)	5.00 (3.73)	1	230	240	25.6	25.8	23	1 ¼ in. SS	66.5 (1689)	53 (1346)	82 (37)	100
PF305032 ^{5,6,8}	30 (1.9)	5.00 (3.73)	3	230	240	16.6	16.6	23	1 ¼ in. SS	60.8 (1544)	48 (1219)	66 (30)	300
PF30503200 ^{5,6,8}	30 (1.9)	5.00 (3.73)	3	200	208	18.7	18.7	23	1 ¼ in. SS	60.8 (1544)	48 (1219)	66 (30)	300
PF500511	50 (3.2)	0.50 (0.37)	1	115	120	12.1	12.1	2	2 in. SS	20.3 (516)	24 (610)	27 (12)	300
PF500512	50 (3.2)	0.50 (0.37)	1	230	240	6.2	6.2	2	2 in. SS	20.3 (516)	24 (610)	27 (12)	300
PF500532	50 (3.2)	0.50 (0.37)	3	230	240	3.0	3.0	2	2 in. SS	20.3 (516)	24 (610)	28 (13)	300
PF50053200	50 (3.2)	0.50 (0.37)	3	200	208	3.7	3.7	2	2 in. SS	20.3 (516)	24 (610)	28 (13)	300
PF500534	50 (3.2)	0.50 (0.37)	3	460	480	1.5	1.5	2	2 in. SS	20.3 (516)	24 (610)	28 (13)	300
PF500712	50 (3.2)	0.75 (0.56)	1	230	240	8.5	8.5	3	2 in. SS	23.7 (602)	25 (635)	31 (14)	300
PF500732	50 (3.2)	0.75 (0.56)	3	230	240	3.9	3.9	3	2 in. SS	23.7 (602)	25 (635)	32 (15)	300

Specifications, cont.

Pump Model	Design gpm (L/sec)	Horsepower (kW)	Phase	Nameplate voltage	Actual voltage	Design flow amps	Max amps	Impellers	Discharge size and material ¹	Length, in. (mm)	Min. liquid level, ² in. (mm)	Weight, ³ lb (kg)	Rated cycles/day
PF50073200	50 (3.2)	0.75 (0.56)	3	200	208	4.9	4.9	3	2 in. SS	23.1 (587)	26 (660)	32 (15)	300
PF500734	50 (3.2)	0.75 (0.56)	3	460	480	1.8	1.8	3	2 in. SS	34.8 (884)	25 (635)	31 (14)	300
PF501012	50 (3.2)	1.00 (0.75)	1	230	240	10.1	10.1	4	2 in. SS	27.0 (686)	26 (660)	35 (16)	100
PF50103200	50 (3.2)	1.00 (0.75)	3	200	208	5.7	5.7	4	2 in. SS	26.4 (671)	26 (660)	39 (18)	300
PF501034	50 (3.2)	1.00 (0.75)	3	460	480	2.2	2.2	4	2 in. SS	26.4 (671)	26 (660)	39 (18)	300
PF501512 ⁴	50 (3.2)	1.50 (1.11)	1	230	240	12.5	12.6	5	2 in. SS	32.5 (826)	30 (762)	41 (19)	100
PF50153200 ⁴	50 (3.2)	1.50 (1.11)	3	200	208	7.0	7.0	5	2 in. SS	29.3 (744)	26 (660)	35 (16)	300
PF503012 ^{4, 5, 7, 8}	50 (3.2)	3.00 (2.23)	1	230	240	17.7	17.7	8	2 in. SS	43.0 (1092)	37 (940)	55 (25)	100
PF50303200 ^{4, 5, 8}	50 (3.2)	3.00 (2.23)	3	200	208	13.1	13.1	8	2 in. SS	43.4 (1102)	30 (762)	55 (25)	300
PF503034 ^{4, 5, 8}	50 (3.2)	3.00 (2.23)	3	460	480	5.3	5.3	8	2 in. SS	40.0 (1016)	31 (787)	55 (25)	300
PF505012 ^{5, 6, 7, 8}	50 (3.2)	5.00 (3.73)	1	230	240	26.2	26.4	13	2 in. SS	65.4 (1661)	55 (1397)	64 (29)	100
PF505032 ^{5, 6, 8}	50 (3.2)	5.00 (3.73)	3	230	240	16.5	16.5	13	2 in. SS	59.3 (1506)	49 (1245)	64 (29)	300
PF751012	75 (4.7)	1.00 (0.75)	1	230	240	9.9	10.0	3	2 in. SS	27.0 (686)	27 (686)	34 (15)	100
PF751512	75 (4.7)	1.50 (1.11)	1	230	240	12.1	12.3	4	2 in. SS	33.4 (848)	30 (762)	44 (20)	100

- ¹ GFP = glass-filled polypropylene; SS = stainless steel. The 1 ¼-in. NPT GFP discharge is 2 7/8 in. octagonal across flats; the 1 ¼-in. NPT SS discharge is 2 1/8 in. octagonal across flats; and the 2-in. NPT SS discharge is 2 7/8 in. hexagonal across flats. Discharge is female NPT threaded, U.S. nominal size, to accommodate Orenco® discharge hose and valve assemblies. Consult your Orenco Distributor about fittings to connect hose and valve assemblies to metric-sized piping.
- ² Minimum liquid level is for single pumps when installed in an Orenco Biotube® Pump Vault or Universal Flow Inducer. In other applications, minimum liquid level should be top of pump. Consult Orenco for more information.
- ³ Weight includes carton and 10-ft (3-m) cord.
- ⁴ High-pressure discharge assembly required.
- ⁵ Do not use cam-lock option (Q) on discharge assembly.
- ⁶ Custom discharge assembly required for these pumps. Contact Orenco.
- ⁷ Capacitor pack (sold separately or installed in a custom control panel) required for this pump. Contact Orenco.
- ⁸ Torque locks are available for all pumps, and are supplied with 3-hp and 5-hp pumps.

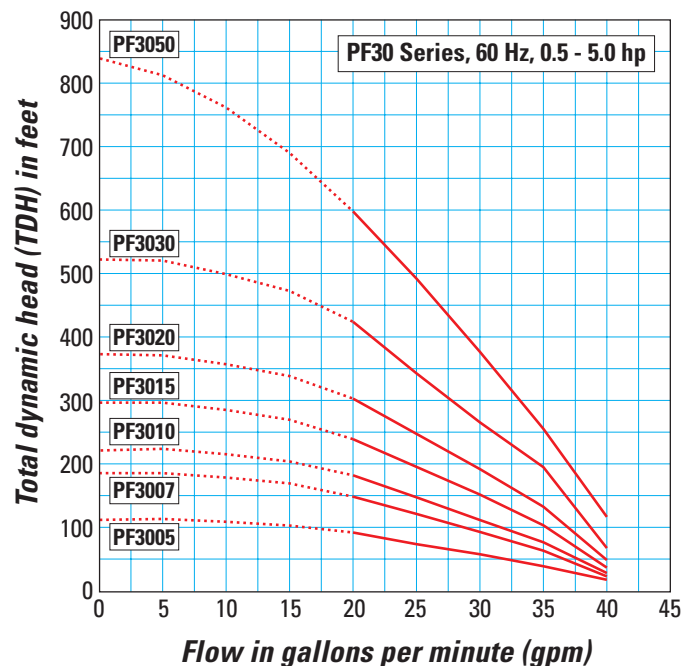
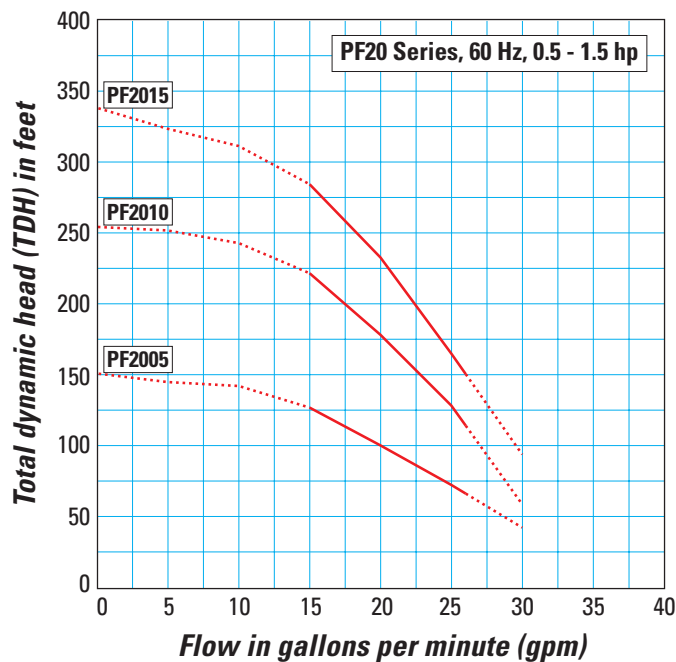
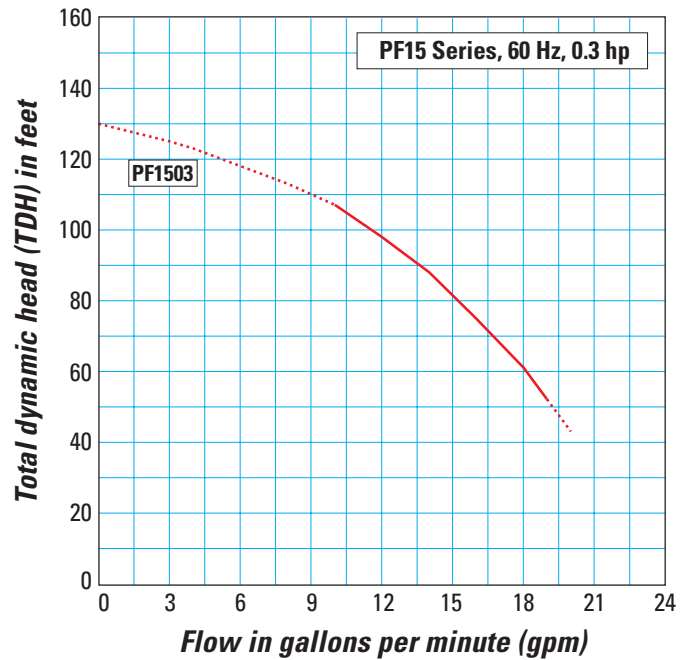
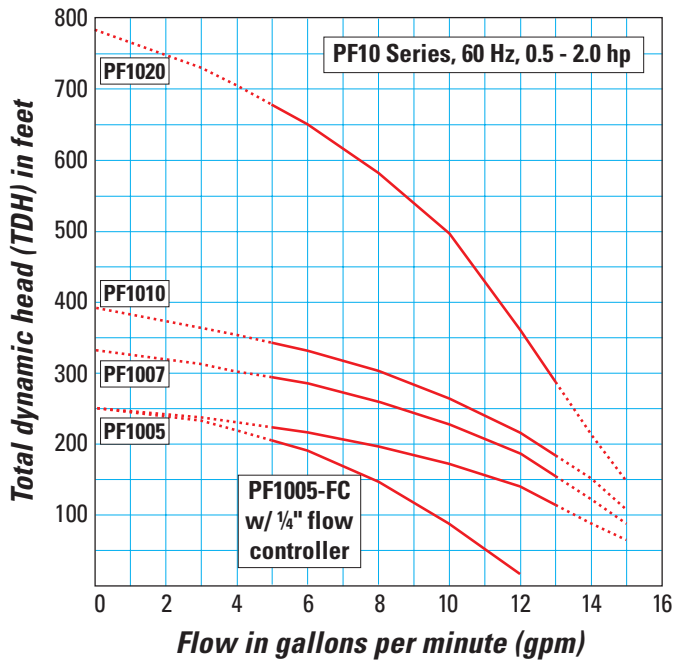
Materials of Construction

Discharge	Glass-filled polypropylene or stainless steel
Discharge bearing	Engineered thermoplastic (PEEK)
Diffusers	Glass-filled PPO (Noryl GFN3)
Impellers	Celcon® acetal copolymer on 10-, 20, and 30-gpm models; 50-gpm impellers are Noryl GFN3
Intake screen	Polypropylene
Suction connection	Stainless steel
Drive shaft	7/16 inch hexagonal stainless steel, 300 series
Coupling	Sintered stainless steel, 300 series
Shell	Stainless steel, 300 series
Motor	Franklin motor exterior constructed of stainless steel. Motor filled with deionized water and propylene glycol for constant lubrication. Hermetically sealed motor housing ensures moisture-free windings. All thrust absorbed by Kingsbury-type thrust bearing. Rated for continuous duty. Single-phase motors and 200 and 230 V 3-phase motors equipped with surge arrestors for added security. Single-phase motors through 1.5 hp (1.11 kW) have built-in thermal overload protection, which trips at 203-221° F (95-105° C).

Using a Pump Curve

A *pump curve* helps you determine the best pump for your system. Pump curves show the relationship between flow and pressure (total dynamic head, or TDH), providing a graphical representation of a pump's optimal performance range. Pumps perform best at their nominal flow rate. These graphs show optimal pump operation ranges with a solid line and show flow rates outside of these ranges with a dashed line. For the most accurate pump specification, use Orenco's PumpSelect™ software.

Pump Curves



Pump Curves, cont.

