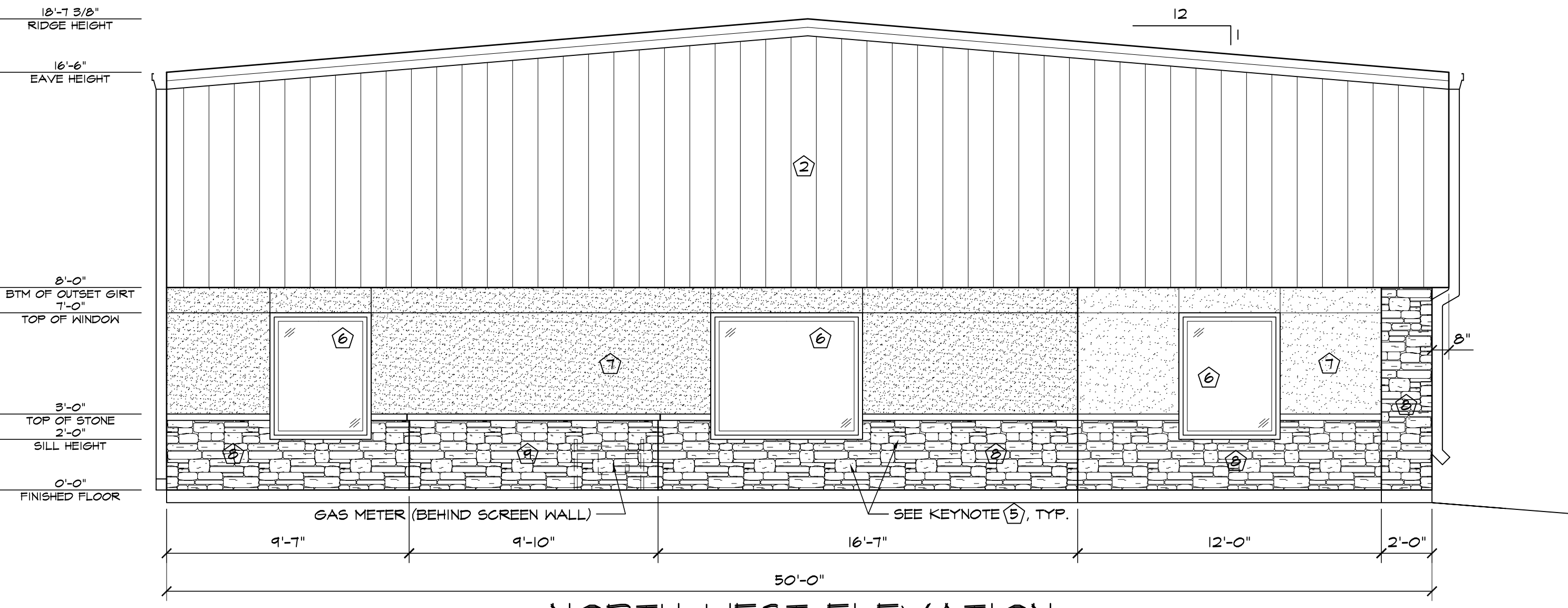
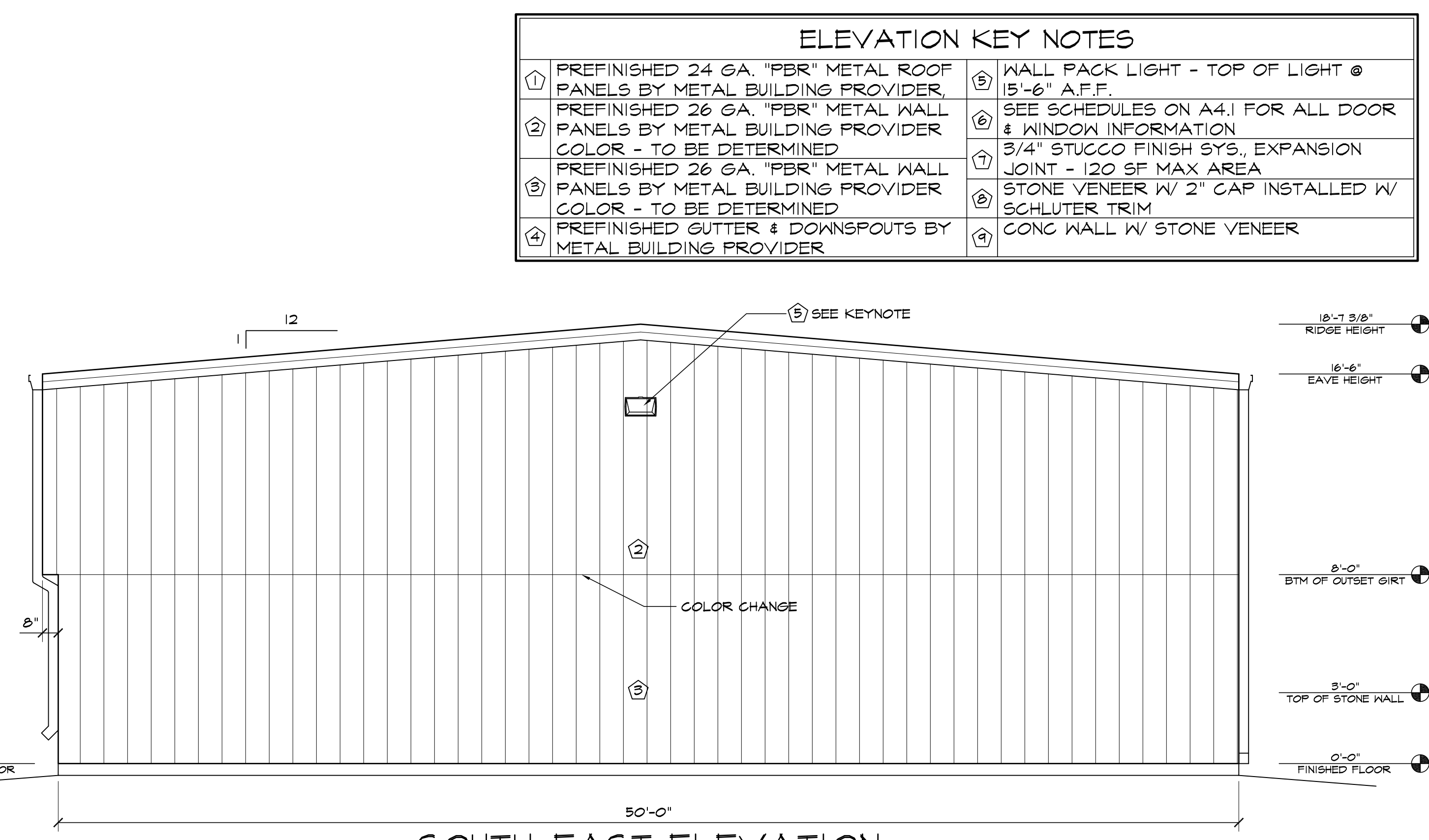


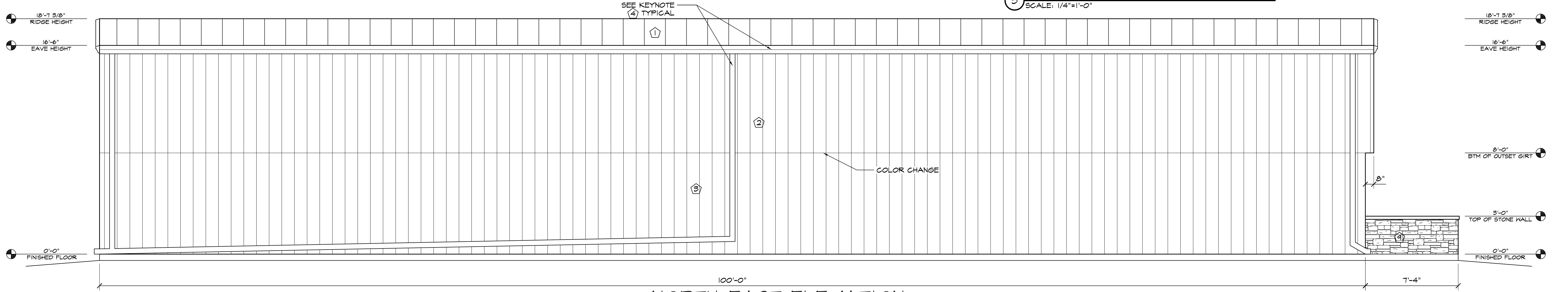
1 SOUTH-WEST ELEVATION
SCALE: 1/4"=1'-0"



2 NORTH-WEST ELEVATION
SCALE: 1/4"=1'-0"



3 SOUTH-EAST ELEVATION
SCALE: 1/4"=1'-0"



4 NORTH-EAST ELEVATION
SCALE: 1/4"=1'-0"

ELEVATION KEY NOTES	
①	PREFINISHED 24 GA. "PBR" METAL ROOF PANELS BY METAL BUILDING PROVIDER.
②	PREFINISHED 26 GA. "PBR" METAL WALL PANELS BY METAL BUILDING PROVIDER. COLOR - TO BE DETERMINED.
③	PREFINISHED 26 GA. "PBR" METAL WALL PANELS BY METAL BUILDING PROVIDER. COLOR - TO BE DETERMINED.
④	PREFINISHED GUTTER & DOWNSPOUTS BY METAL BUILDING PROVIDER.
⑤	WALL PACK LIGHT - TOP OF LIGHT @ 15'-6" A.F.F.
⑥	SEE SCHEDULES ON A4.1 FOR ALL DOOR & WINDOW INFORMATION.
⑦	3/4" STUCCO FINISH SYS. EXPANSION JOINT - 120 SF MAX AREA.
⑧	STONE VENEER W/ 2" GAP INSTALLED W/ SCHLUTER TRIM.
⑨	CONC WALL W/ STONE VENEER.

HAMMERS CONSTRUCTION INC.
COMMERCIAL GENERAL CONTRACTORS SPECIALIZING IN DESIGN/BUILD
PRESIDENT: STEVE R. HAMMERS
VICE PRES: DAVID J. HAMMERS
1411 WOOLSEY HEIGHTS
COLORADO SPRINGS, CO 80915
(719) 570-1589 FAX (719) 570-7008
www.hammersconstruction.com

THIS DRAWING CONTAINS MATERIAL & INFORMATION WHICH MAY NOT BE REPRODUCED WITHOUT WRITTEN CONSENT OF HAMMERS CONSTRUCTION INC. THESE DRAWINGS ARE INTENDED TO BE USED ONLY BY HAMMERS CONSTRUCTION & ITS REPRESENTATIVES. THESE DRAWINGS HAVE NOT BEEN PREPARED FOR ANY OTHER PURPOSE THAN TO INDICATE THE GENERAL FEATURES AND PLACEMENT OF THE PROPOSED PROJECT. COPYRIGHT © 2018 HAMMERS CONSTRUCTION

1002, LLC
CLAREMONT BUSINESS PARK-LOT 8-2
1415 SELIX GROVE
COLORADO SPRINGS, CO 80915
EL PASO COUNTY, COLORADO

DATE: NOV. 21, 2017
DRAWN BY: L. PETERSON
PROJ. MGR: Z. GRABTREE
SCALE: SEE PLAN
APPROVED BY:
JOB NO: 1024

RESUBMITTALS:
 ▲ 1-8-18/DP COMMENTS 1-1-17
 ▲ 2-1-18/DP COMMENTS 1-25-18
 ▲ 3-2-18/FINAL SUBMITTAL

DATE: NOV. 21, 2017
DRAWN BY: L. PETERSON
PROJ. MGR: Z. GRABTREE
SCALE: SEE PLAN
APPROVED BY:
JOB NO: 1024

RESUBMITTALS:
 ▲ 1-8-18/DP COMMENTS 1-1-17
 ▲ 2-1-18/DP COMMENTS 1-25-18
 ▲ 3-2-18/FINAL SUBMITTAL