



WOODMEN

VALLEY CHAPEL

290 E. Woodmen Rd., Colorado Springs, CO 80919

719.388.5000 • info@woodmenvalley.org

woodmenvalley.org

MEMO FOR RECORD

SUBJECT: Traffic Flow/Management on Sunday Mornings

DATE: April 3, 2020

Purpose. To identify steps Woodmen Valley Chapel plans to adopt to manage the traffic flow during Sunday morning services and other high-traffic events (weddings/funerals/holiday services).

Discussion.

- Under normal daily/evening activities at the church the projected traffic count will not require special traffic management steps.
 - The traffic count is expected to be in the 175 to 200 range with a single flow into the parking area (15-20 minute duration using both NW and NE access points) and a single flow exiting the parking area (10-15 minute duration).
 - This should not result in “stacking” on Wagon Bow Way or Old Denver Highway.
- The major traffic flow challenge (“stacking” on Wagon Bow Way) will be on Sunday mornings (with two services), during special events and during holiday service periods with higher than normal attendance.
 - The challenge is particularly acute on Sunday mornings **between** the first (9:00am) and second (11:00am) worship service.
 - Traffic flow should not be an issue **before** the 9:00am service (only arriving traffic) and **after** the 11:00am service (only departing traffic).
 - Between 10:15am and 11:00am people will be departing the 9:00am service while people are also arriving for the 11:00am service creating a potential for traffic congestion.
 - This will require the church execute a planned “counter clock wise” traffic flow (see attached site plan map) with vehicles **entering** the parking area via the NW lot access and flowing counter clock wise around the church building to parking areas (counter clock wise flow will begin at 8:30am and continue until 11:00am).
 - The NE access will be the dedicated parking area **exit** with vehicles turning left onto Wagon Bow Way to exit onto Old Denver Highway.
 - WVC will use the following traffic control/management tools during the period between Sunday services.
 - Traffic cones on Wagon Bow Way to direct inbound traffic to use the NW access for entry into the parking area.

- Traffic monitors (volunteers with safety vests/flags) located at strategic locations to direct traffic and keep vehicles moving to avoid stacking on Wagon Bow Way.
- For departing traffic all vehicles will be **right turn only** at Wagon Bow Way onto Old Denver Highway between 10:15am and 11:00am.
 - WVC will position a portable sign at that intersection illustrating this traffic flow.
 - It would be very helpful to have local police direct traffic at the Old Denver Highway/Wagon Bow Way intersection on Sunday mornings between 10:15am and 11:00am.

- For special events and holiday services with higher traffic counts WVC will use similar traffic control measures as for Sunday mornings. Additionally, for holiday services the church will attempt to plan additional time between services to reduce the traffic congestion between inbound and outbound vehicles.

Prepared By: Ed Houle/WVC Project Manager
(719) 659-9759
Ehoule52@msn.com

Attachment



PROJECT
WOODMEN VALLEY CHAPEL
MONUMENT CAMPUS
CONCEPT PLAN
TOWN OF MONUMENT

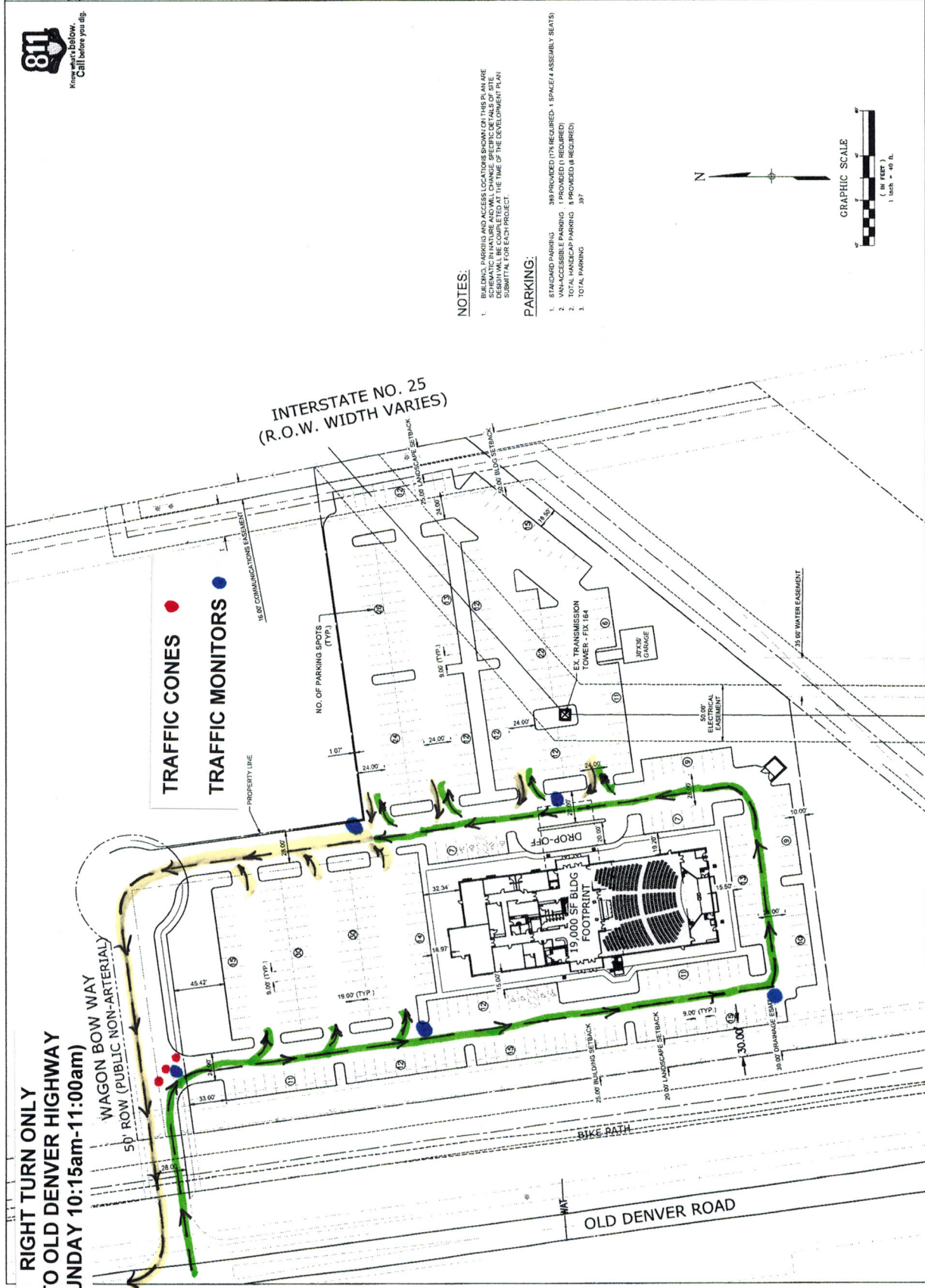
OWNER
WOODMEN VALLEY CHAPEL
1800 E. WOODMEN RD
COLORADO SPRINGS, CO 80919
(719) 388-5000

DEVELOPER
WOODMEN VALLEY CHAPEL
280 E. WOODMEN RD
COLORADO SPRINGS, CO 80919
(719) 388-5000

CONSULTANT
PLANNING ENGINEER
811
Know what's below.
Call before you dig.

DATE: 18 MAR 2017
PROJECT NO: AC
DRAWN BY: [blank]
CHECKED BY: [blank]
APPROVED BY: [blank]
SHEET TITLE: [blank]

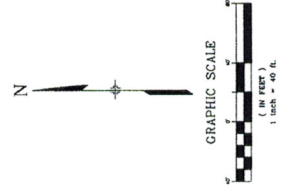
CONCEPT
SITE
PLAN
SP01
SHEET 1 OF 1



NOTES:
1. BUILDING, PARKING AND ACCESS LOCATIONS SHOWN ON THIS PLAN ARE SCHEMATIC IN NATURE AND WILL CHANGE. SPECIFIC DETAILS OF SITE LAYOUT, MATERIALS, AND THE TIME OF THE DEVELOPMENT PLAN SUBMITTAL FOR EACH PROJECT.

PARKING:
1. 8 STANDARD PARKING
2. 1 VAN-ACCESSIBLE PARKING
3. 1 NON-ACCESSIBLE PARKING
4. 37 TOTAL PARKING

388 PROVIDED (178 REQUIRED) - 1 SPACE/1 ASSEMBLY SEATS
1 PROVIDED (1 REQUIRED)
377 PROVIDED (377 REQUIRED)
387 TOTAL PARKING



WOODMEN VALLEY CHAPEL
TRAFFIC MANAGEMENT
(SUNDAY MORNINGS)