

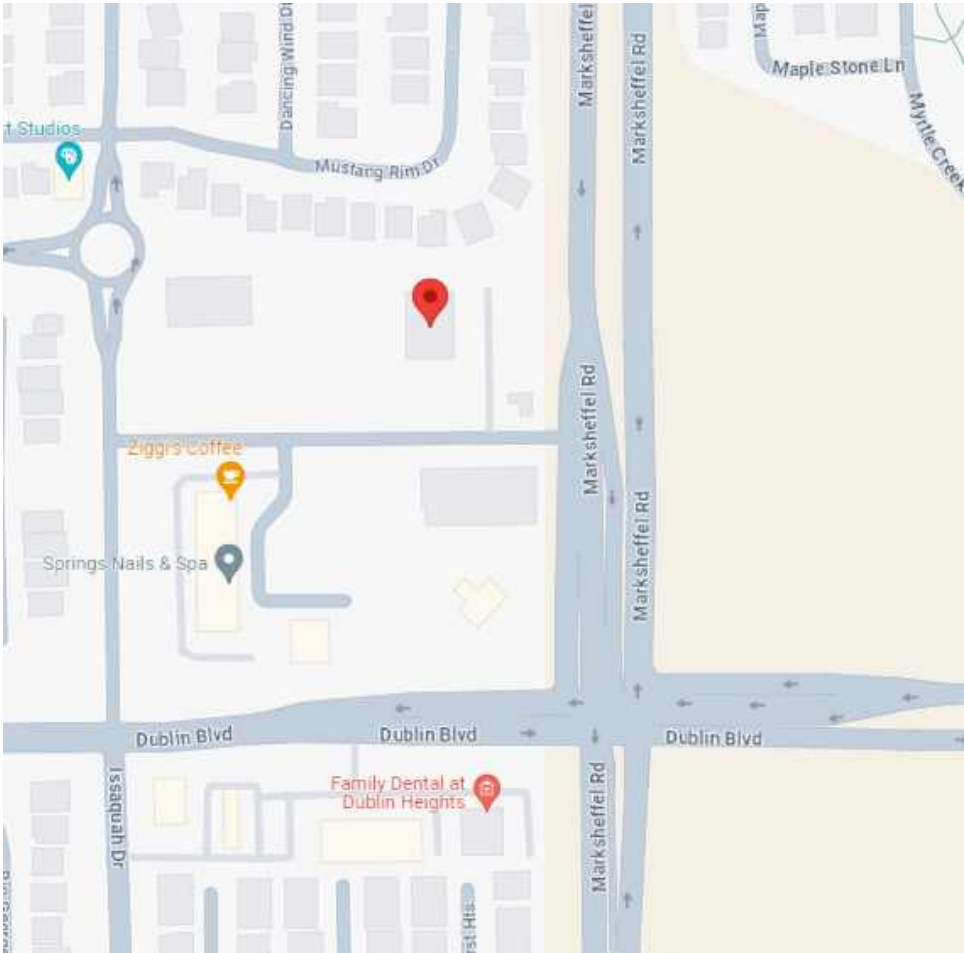


McDonald's

6646 MARKSHEFFEL ROAD - COLORADO SPRINGS, CO 80925

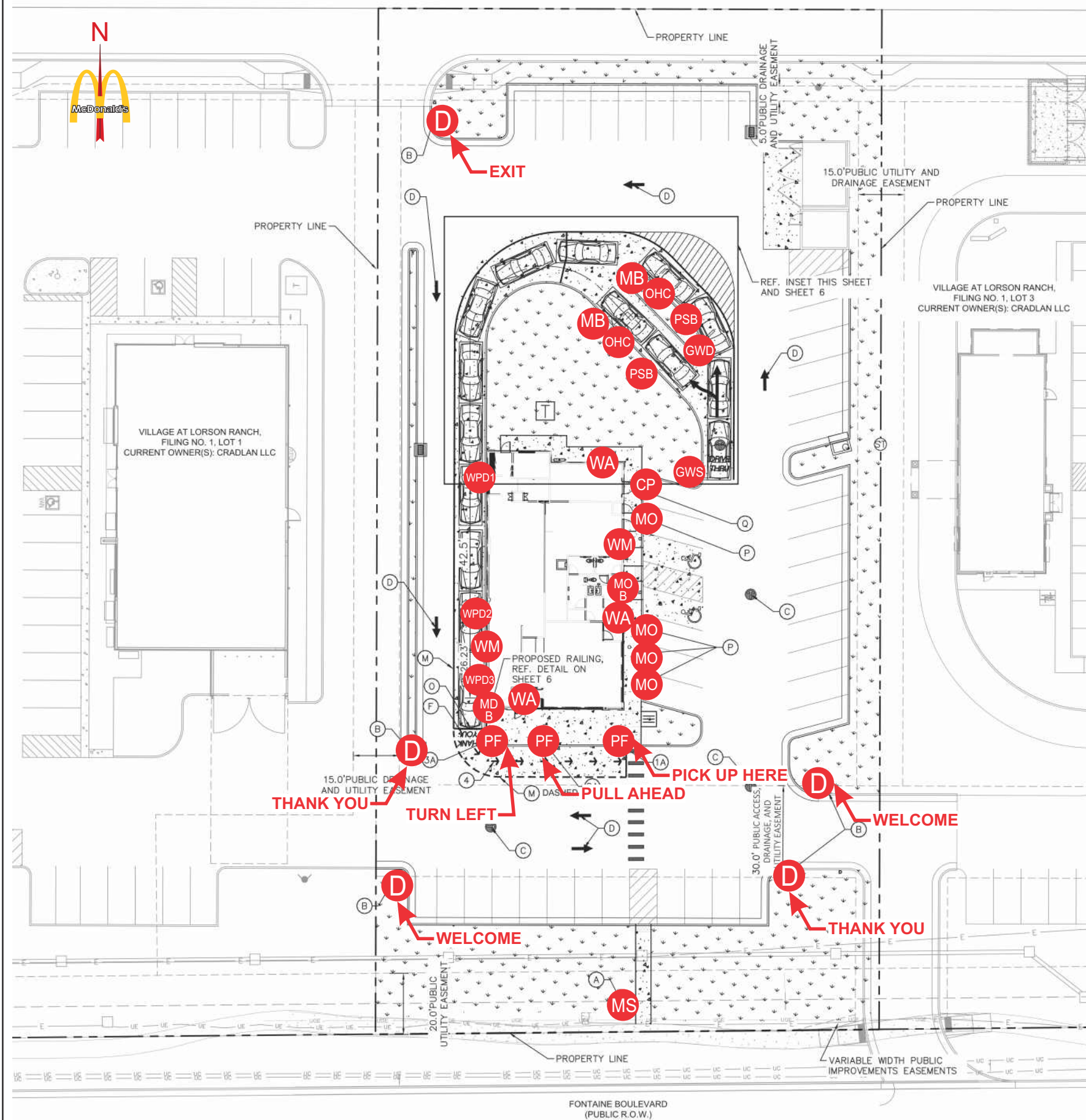
SIGN PROGRAM BOOK

- Please provide:
- 1. Summary of square footage of the total allowed signage and existing and proposed signage for the property.
 - 2. Setback distances from all lot line to all existing and proposed signs.
 - 3. Detailed description of illuminating devices and how the proposed illumination will be in compliance with the lighting standards.



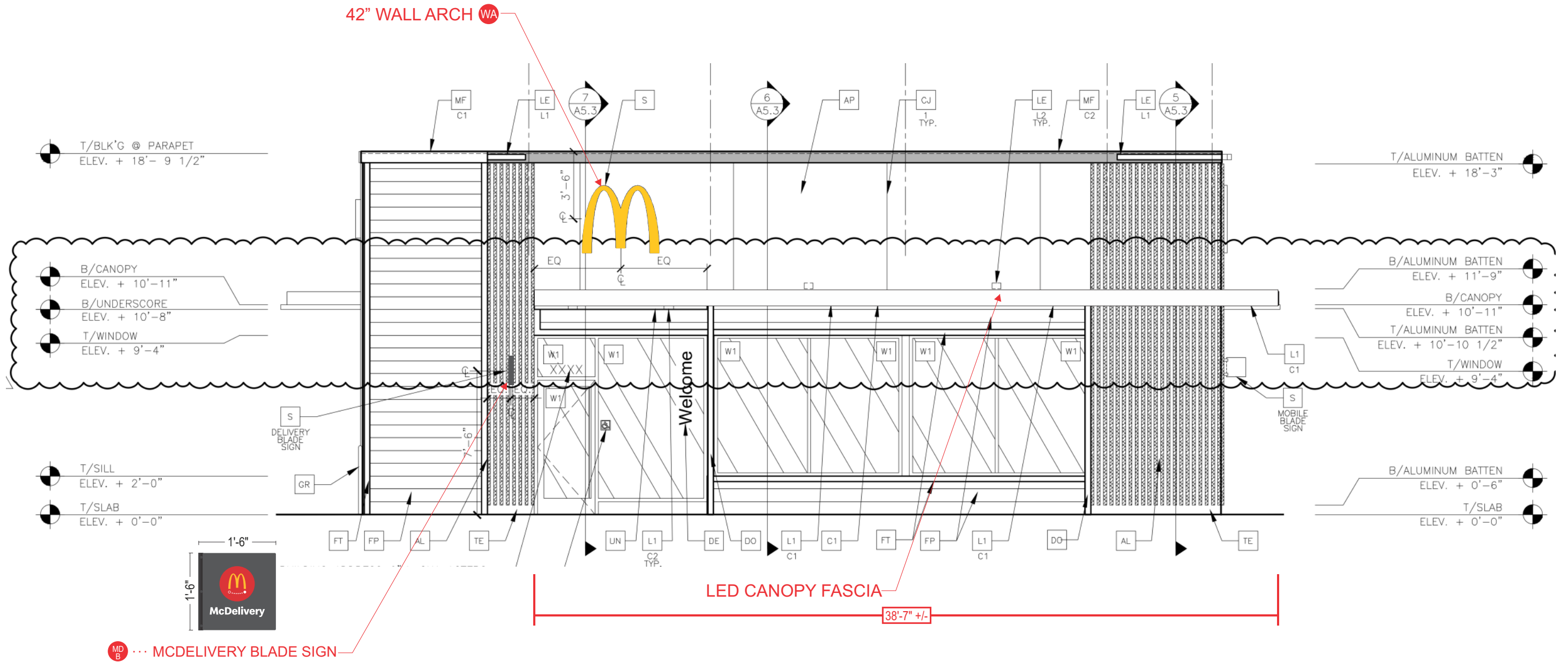
VICINITY MAP
NTS

<div>persona</div> <div>SIGNS LIGHTING IMAGE</div>	<div>Persona Signs, LLC</div> <div>700 21st Street Southwest</div> <div>PO Box 210</div> <div>Watertown, SD 57201-0210</div> <div>1.800.843.9888 • www.personasigns.com</div>	<div>Customer:</div> <div>MCDONALD'S</div>	<div>Project No.:</div> <div>444961</div>	<div>Request No.:</div> <div>61959</div>	<div><div><div></div></div><div>This sign is intended to be installed in accordance with the requirements of Article 600 of the National Electric Code and/or other applicable local codes. This includes proper grounding and bonding of the sign.</div></div> <div>This is an original document created by Persona Signs, LLC provided specifically to the client for the client's personal use. This document should not be shared, reproduced, disclosed or otherwise used without written permission from Persona Signs, LLC.</div>	<div>Customer Approval (Please Initial):</div>	
		<div>Location:</div> <div>COLORADO SPRINGS, CO</div>	<div>Prepared By:</div> <div>SC</div>			<div>Approval Date:</div>	
		<div>File Name:</div> <div>444961 - R1 - 6646 MARKSHEFFEL ROAD - COLORADO SPRINGS, CO</div>	<div>Date:</div> <div>26JUL24</div>	<div>Revision:</div> <div>1</div>			

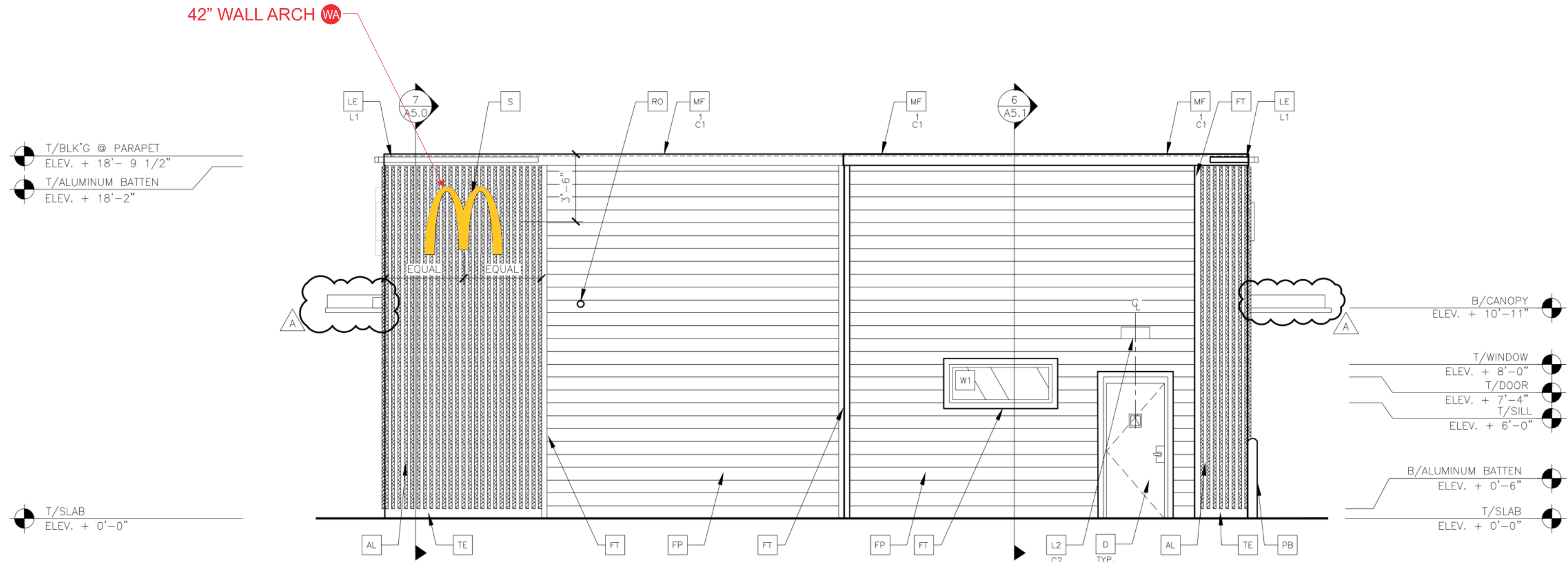


- PSB ··· PRE-SELL BOARD (QTY 2)
- GWD ··· DOUBLE ARM GATEWAY
- GWS ··· SINGLE ARM GATEWAY
- OHC ··· ORDER HERE CANOPY (QTY 2)
- MB ··· MENU BOARD (QTY 2)
- WPD1 ··· WINDOW POSITION DECAL 1
- WPD2 ··· WINDOW POSITION DECAL 2
- WPD3 ··· WINDOW POSITION DECAL 3
- PF ··· PULL FORWARD SIGN (QTY 3)
- MO ··· MOBILE ORDER SIGN (QTY 4)
- CP ··· COURIER PARKING SIGN (QTY 1)
- WA ··· WALL ARCH (QTY 3)
- WM ··· 24" WORDMARK (QTY 2)
- MOB ··· MOBILE ORDER BLADE SIGN
- MD ··· MCDELIVERY BLADE SIGN
- D ··· DIRECTIONAL (QTY 5)
- MS ··· MONUMENT SIGN

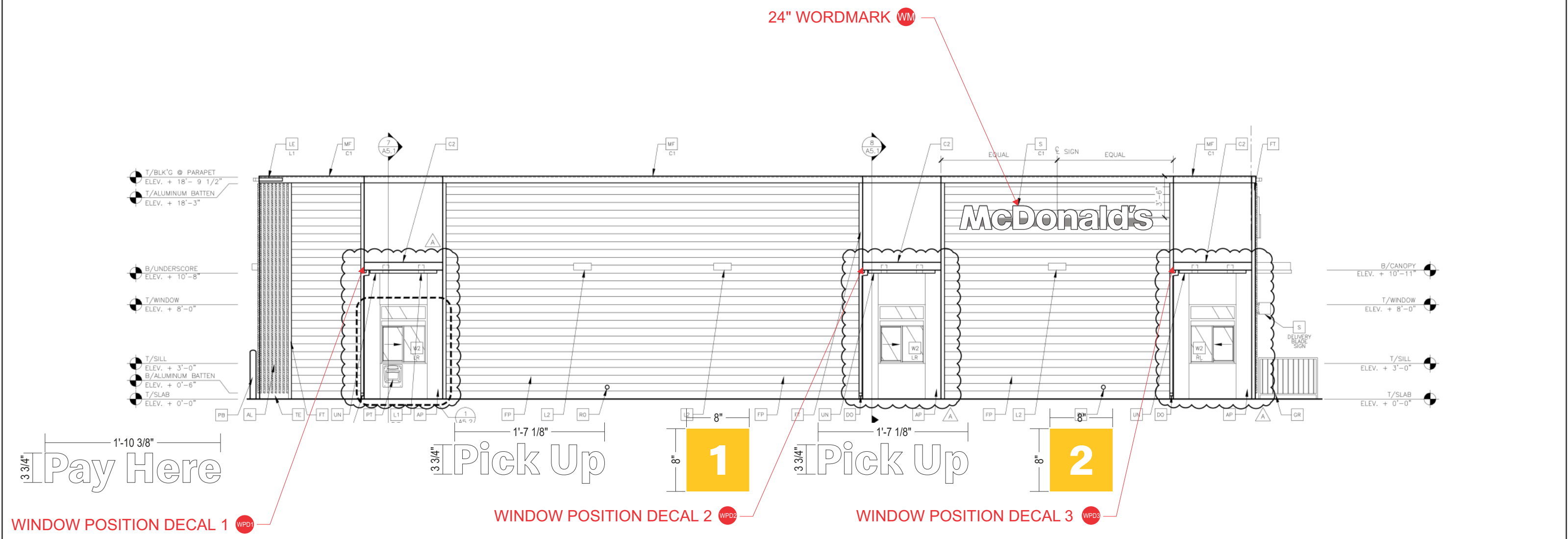
SOUTH (FRONT) ELEVATION
SCALE: 3/16" = 1'-0"



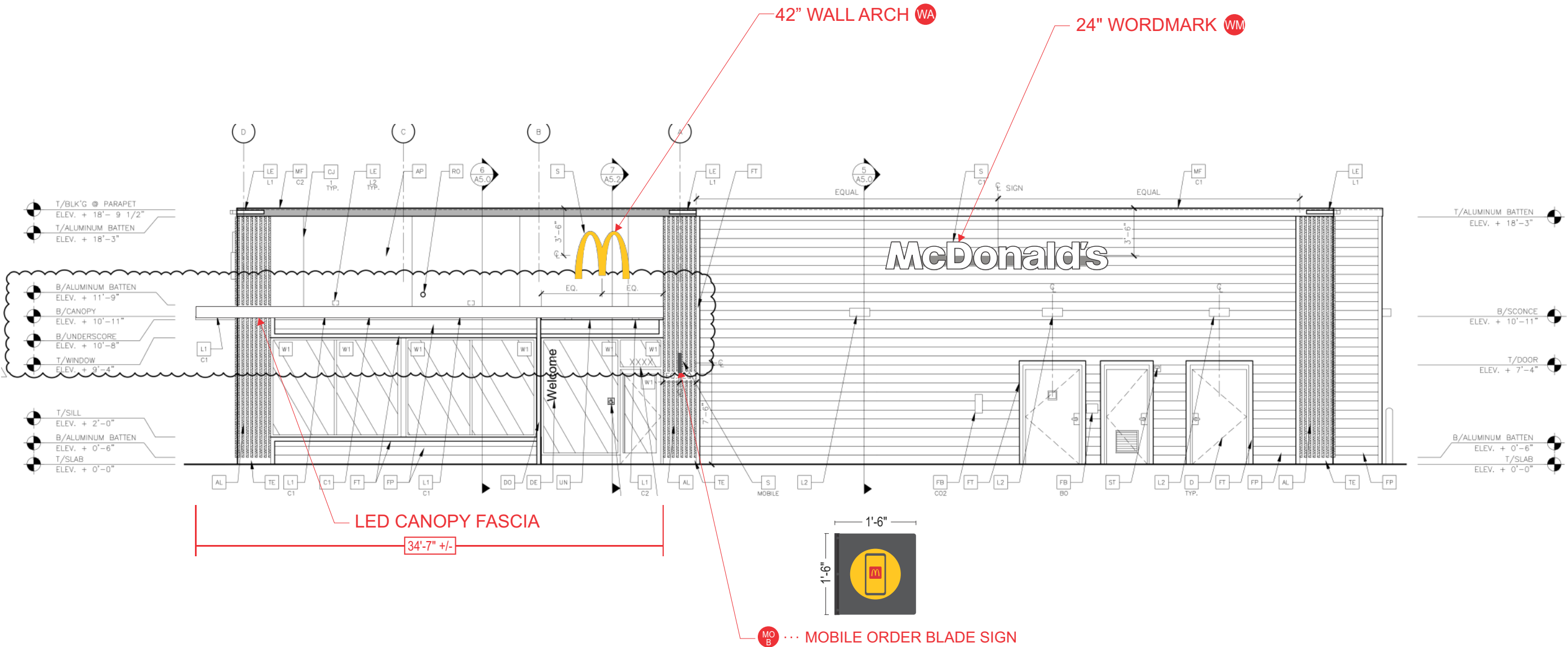
NORTH (REAR) ELEVATION
SCALE: 3/16" = 1'-0"



WEST (DRIVE-THRU) ELEVATION
SCALE: 1/8" = 1'-0"



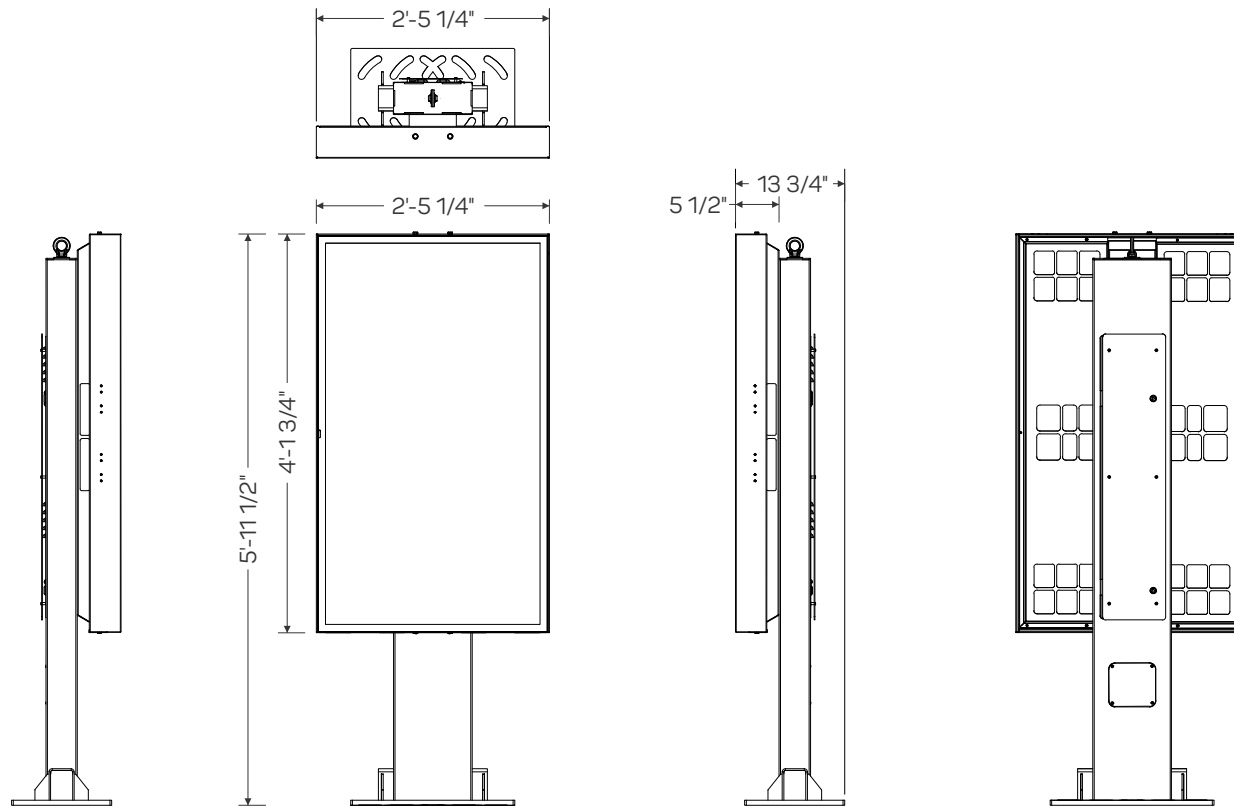
EAST (NON DRIVE-THRU) ELEVATION
SCALE: 1/8" = 1'-0"



Frame	Hot dip galvanized + anti-graffiti powder coated steel
Brackets	Hot dip galvanized
Panels	Aluminium + anti-graffiti powdercoat
Access fasteners	Security Torx
Media player access	Dual camlock
Eyebolt	Stainless crane on
Baseplate	McDonalds spec triple mounting pattern option

ODMB 02 SINGLE

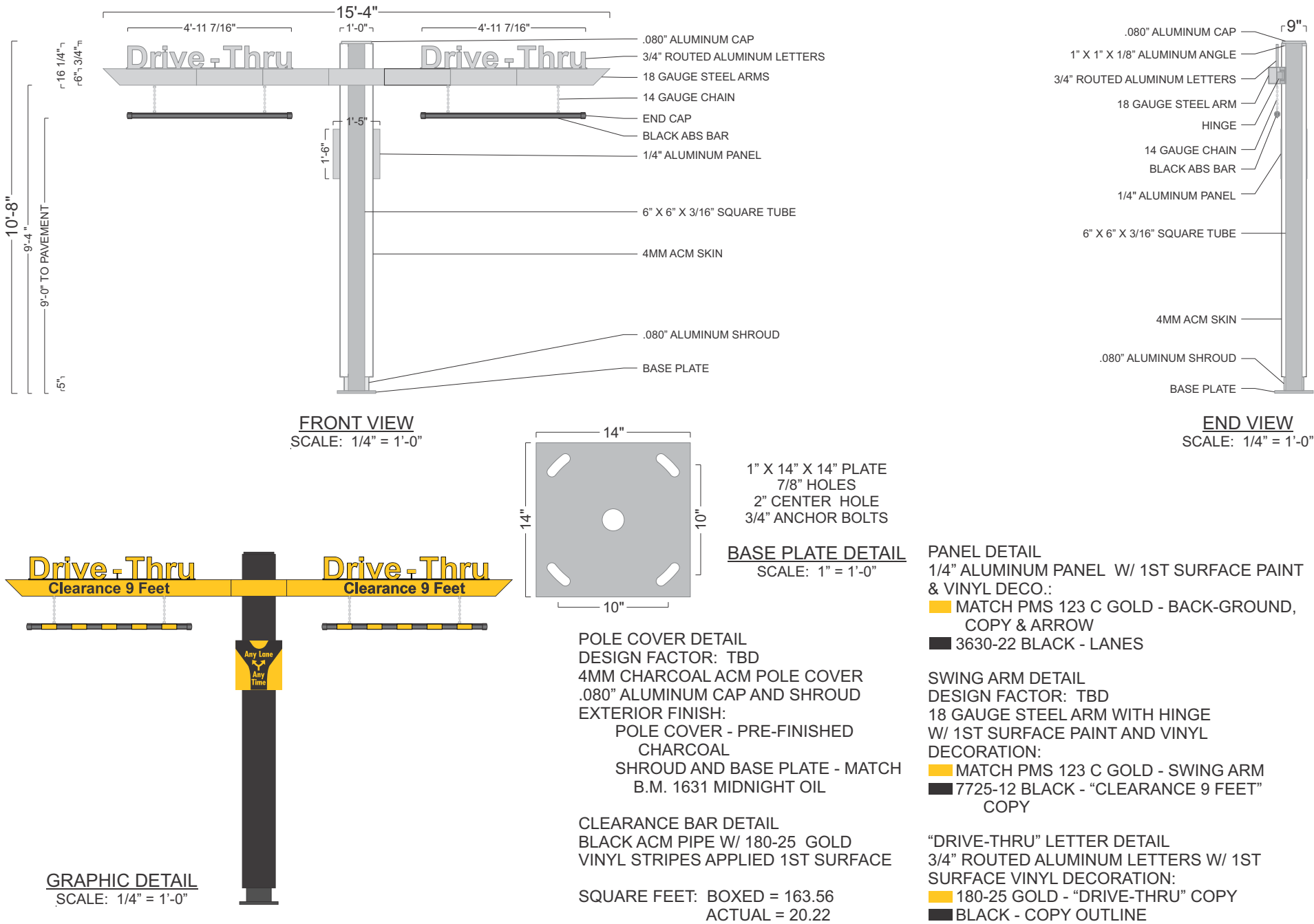
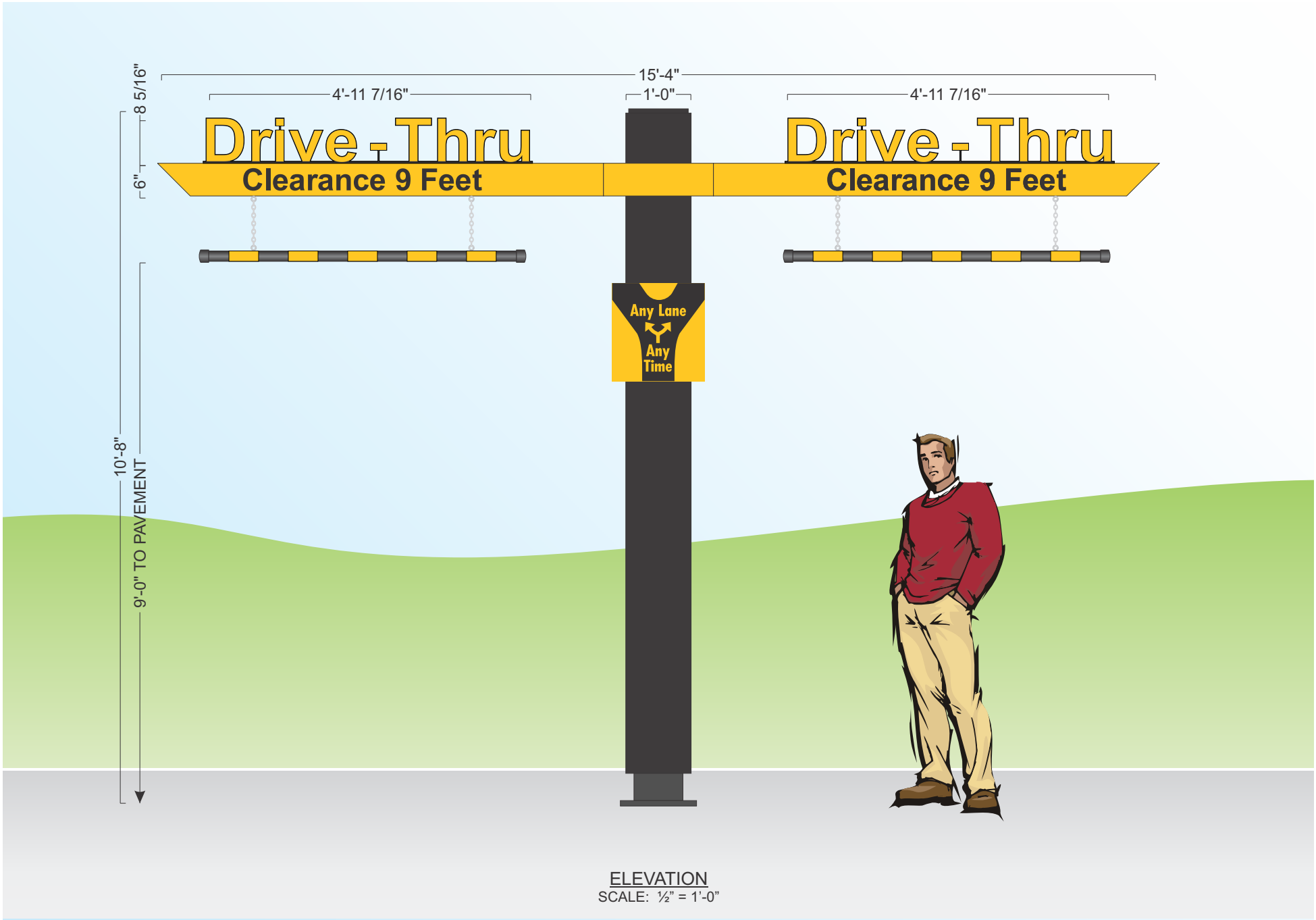
Displays	Samsung OH55F
Hardware	Stratacache Spectra NG
Heating/Cooling	Watlow 100W Heater Sunon 120mm AC Fan
Power Supply Units	60W DC Media Player Power Supply
Power Cables	1 x IEC Power Cable
Electrical Components	Isolated Ground 2 x IG Receptacles 20A Circuit Breaker
Communication Cables	2 x HDMI 1 x RS232
Certification	UL Certified

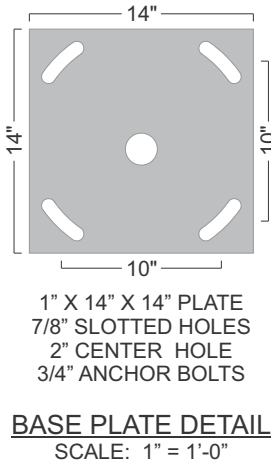
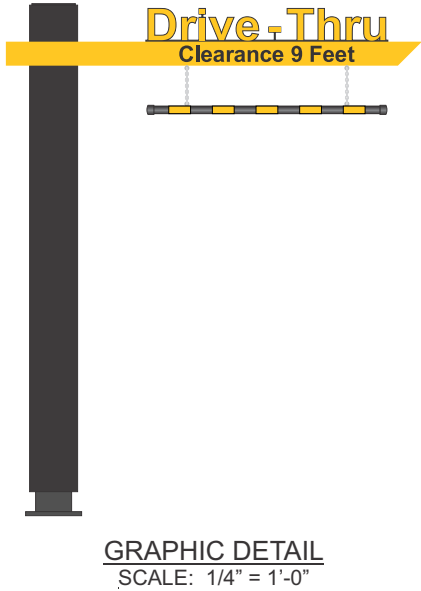
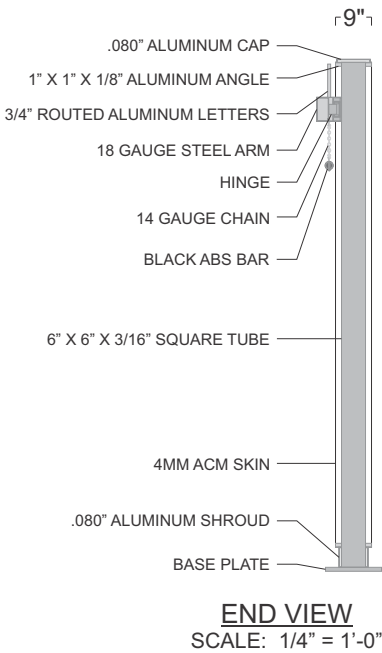
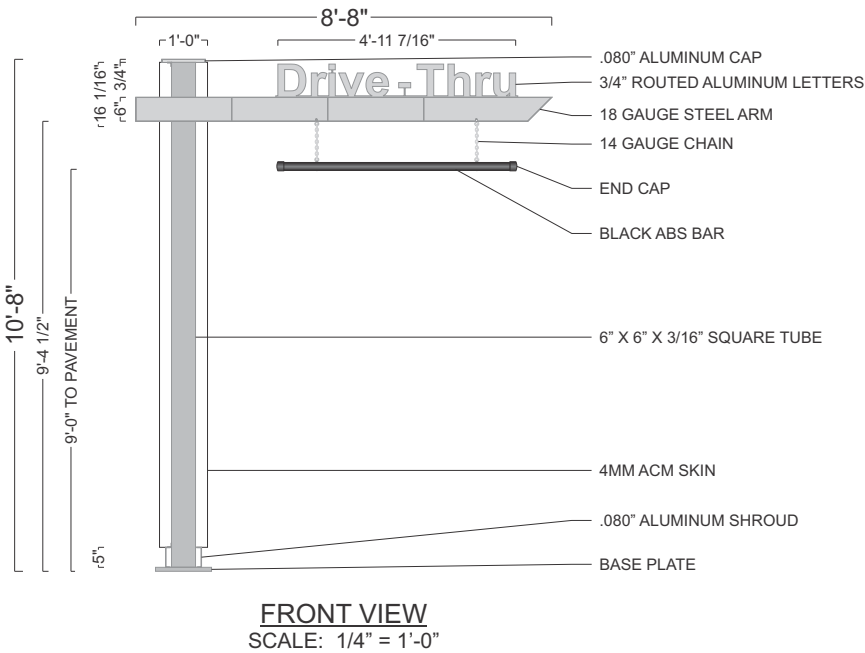
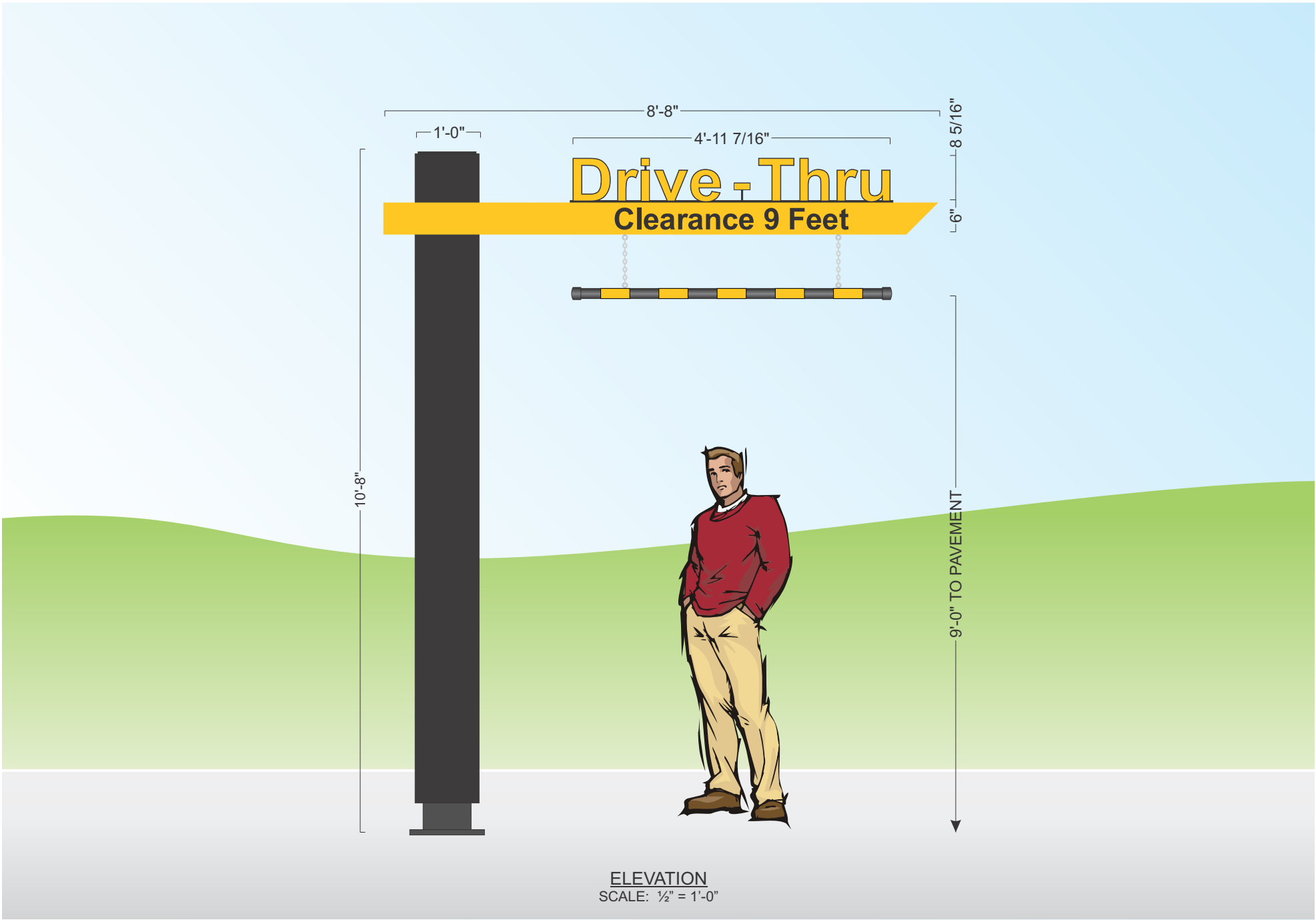


SCALE: 1/2" = 1'-0"



GRAPHIC DETAIL
NOT TO SCALE





POLE COVER DETAIL
DESIGN FACTOR: TBD
4MM CHARCOAL ACM POLE COVER
.080" ALUMINUM CAP AND SHROUD
EXTERIOR FINISH:
POLE COVER - PRE-FINISHED CHARCOAL
SHROUD AND BASE PLATE - MATCH B.M. 1631 MIDNIGHT OIL

CLEARANCE BAR DETAIL
BLACK ACM PIPE W/ 180-25 GOLD VINYL STRIPES APPLIED TO 1ST SURFACE

SQUARE FEET: BOXED = 92.44
ACTUAL = 15.68

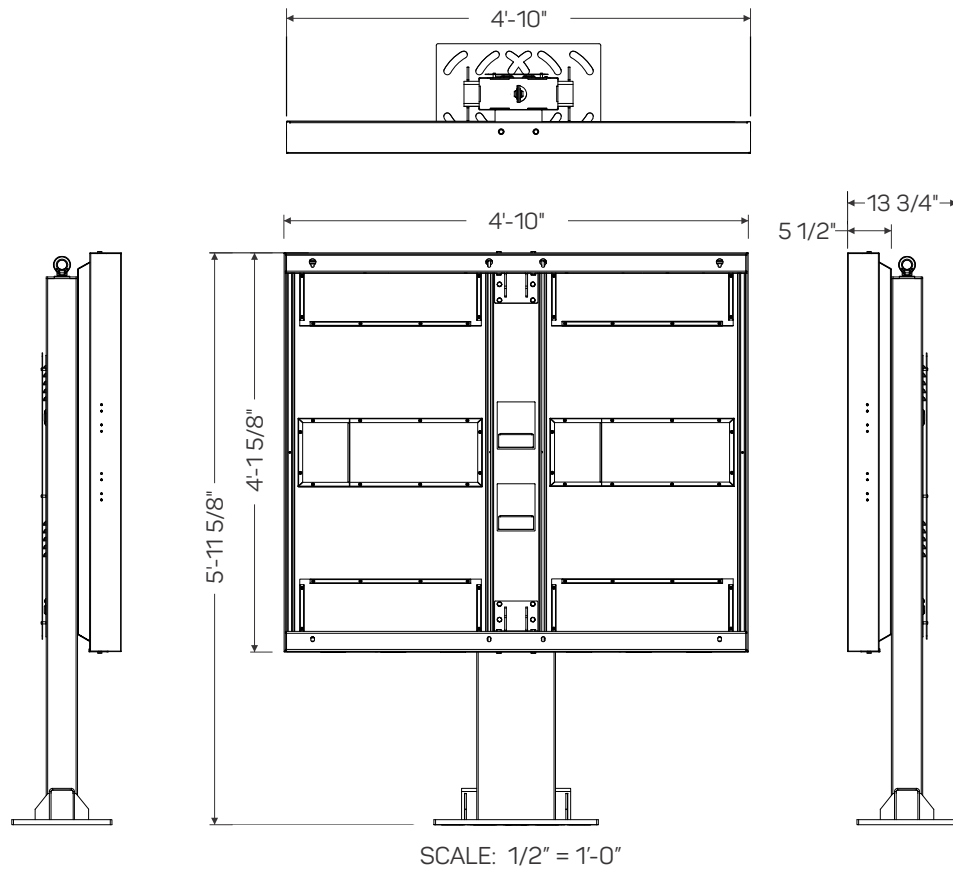
SWING ARM DETAIL
DESIGN FACTOR: TBD
18 GAUGE STEEL ARM WITH HINGE W/ 1ST SURFACE PAINT AND VINYL DECORATION:
MATCH PMS 123 C YELLOW - SWING ARM
7725-12 BLACK - "CLEARANCE 9 FEET" COPY

"DRIVE-THRU" LETTER DETAIL
3/4" ROUTED ALUMINUM LETTERS W/ 1ST SURFACE VINYL DECORATION:
180-25 GOLD - "DRIVE-THRU" COPY
BLACK - COPY OUTLINE

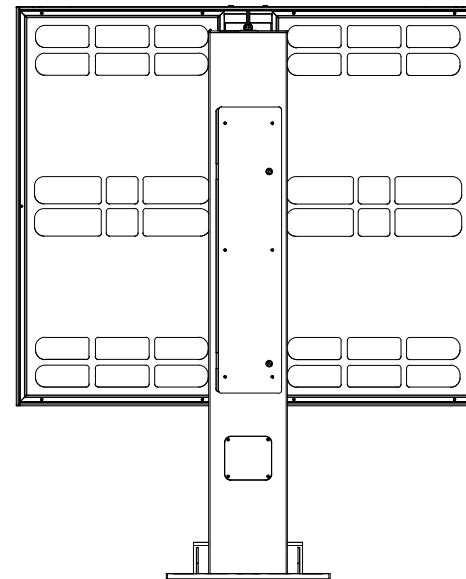
Frame	Hot dip galvanized + anti-graffiti powder coated steel
Brackets	Hot dip galvanized
Panels	Aluminium + anti-graffiti powdercoat
Access fasteners	Security Torx
Media player access	Dual camlock
Eyebolt	Stainless crane on
Baseplate	McDonalds spec triple mounting pattern option

ODMB 02 DOUBLE

Displays	2 x Samsung OH55F
Hardware	2 x Stratacache Spectra NG
Heating/Cooling	Watlow 100W Heater Sunon 120mm AC Fan
Power Supply Units	2 x 60W DC Media Player Power Supply
Power Cables	2 x IEC Power Cables
Electrical Components	Isolated Ground 2 x IG Receptacles 20A Circuit Breaker
Communication Cables	4 x HDMI 2 x RS232
Certification	UL Certified



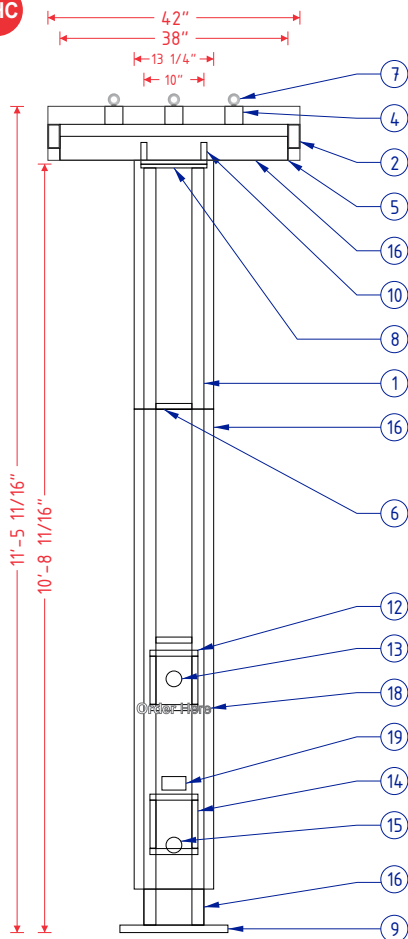
SCALE: 1/2" = 1'-0"



GRAPHIC DETAIL
NOT TO SCALE



OHC



FRAME & LAMP DETAIL

SCALE: 3/8" = 1'-0"

18" X 18" X 1" PLATE
1 3/8" SLOTTED HOLES
1" BOLTS

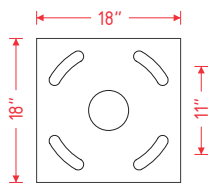
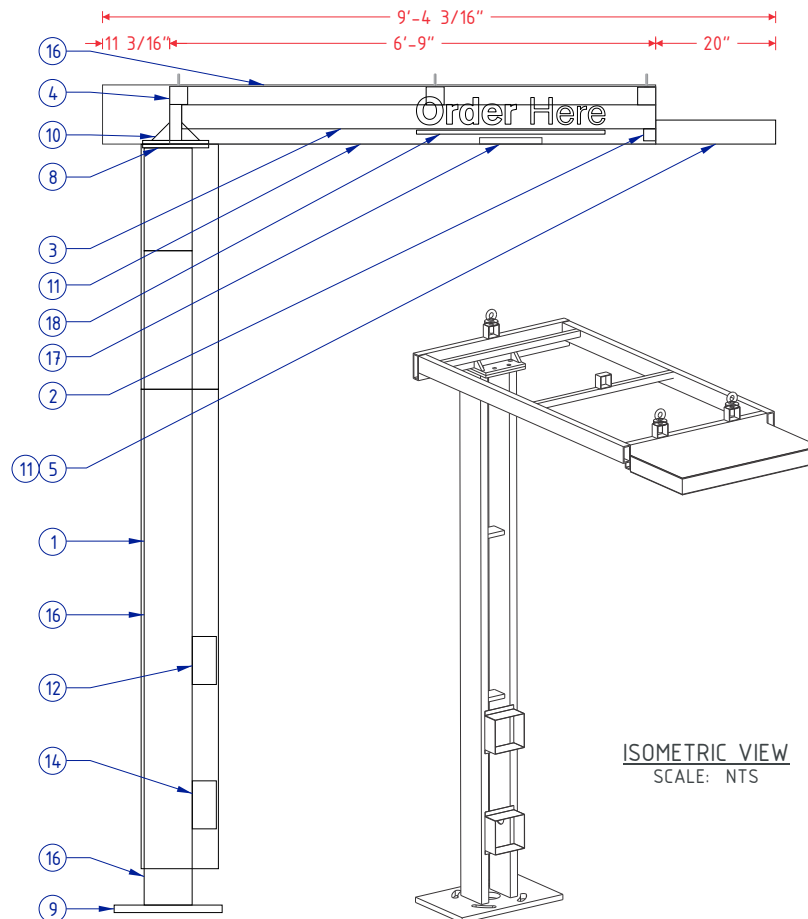


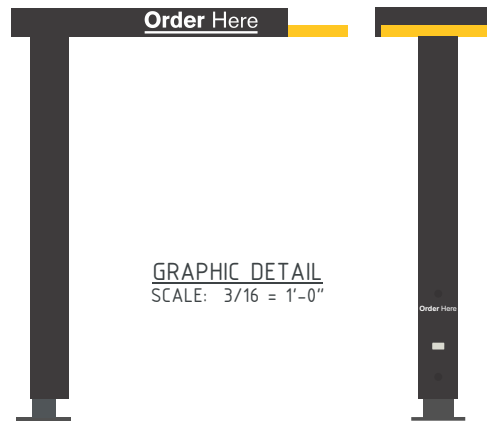
PLATE DETAIL

SCALE: 1/2" = 1'-0"



CROSS SECTION A-A

SCALE: 3/8" = 1'-0"

ISOMETRIC VIEW
SCALE: NTSGRAPHIC DETAIL
SCALE: 3/16" = 1'-0"

MCDONALD'S SPRINGBOARD OHC SPECIFICATIONS

NO.	PART/DESCRIPTION
1	2" X 8" X 3/16" RECTANGULAR TUBE
2	2" X 6" X 1/4" RECTANGULAR TUBE
3	2" X 4" X 1/4" RECTANGULAR TUBE
4	3" X 3" X 3/16" SQUARE TUBE
5	1" X 4" C-CHANNEL
6	2" X 8" X 3/16" RECTANGULAR TUBE
7	1/2" EYEBOLTS (3)
8	11" X 11" X 5/8" TOP PLATES (2) (SEE PLATE DETAILS)
9	18" X 28" X 1" BASE PLATE (SEE PLATE DETAILS)
10	3" X 3" X 3/4" GUSSETS
11	.063" ALUMINUM SKIN
12	.063" ALUMINUM BENT SP10 SPEAKER BOX HOLDER
13	SPEAKER OPENING
14	.063" ALUMINUM BENT DM 4/DM 5 MICROPHONE BOX HOLDER
15	MICROPHONE OPENING
16	ACM CLADDING
17	SLOAN LED LIGHT WITH POWER SUPPLY
18	3M 380-10 REFLECTIVE WHITE FILM 1ST SURFACE
19	ADA STICKER

NOTES:

- 2" X 8" X 3/16 RECTANGULAR TUBE FRAME
- ACM AND .063" ALUMINUM SKIN
- EXTERIOR FINISH:
BASE PLATE - PAINT BM 1631 MIDNIGHT OIL
TUBE AND TOP ACM - PAINT CHARCOAL
SPRINGBOARD TIP AND UNDERSIDE - PAINT PMS 123 C GOLD
- ACM/SKIN REMOVABLE FOR SERVICE
- U.L. LISTED
- (1) 20A / 120V CIRCUIT REQUIRED

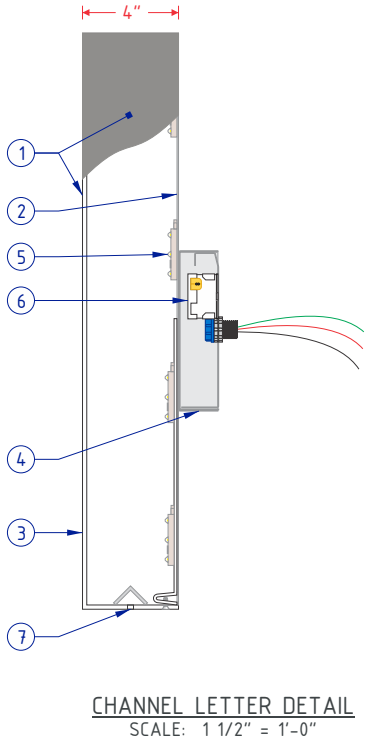
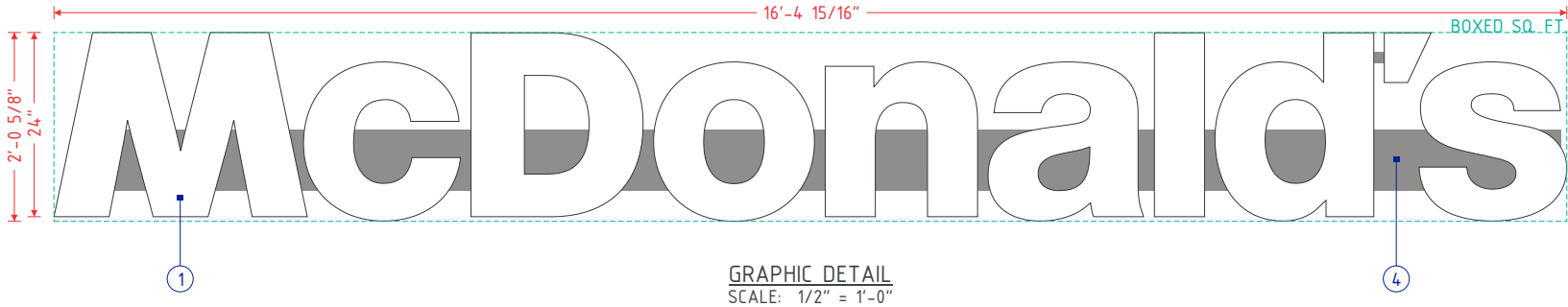
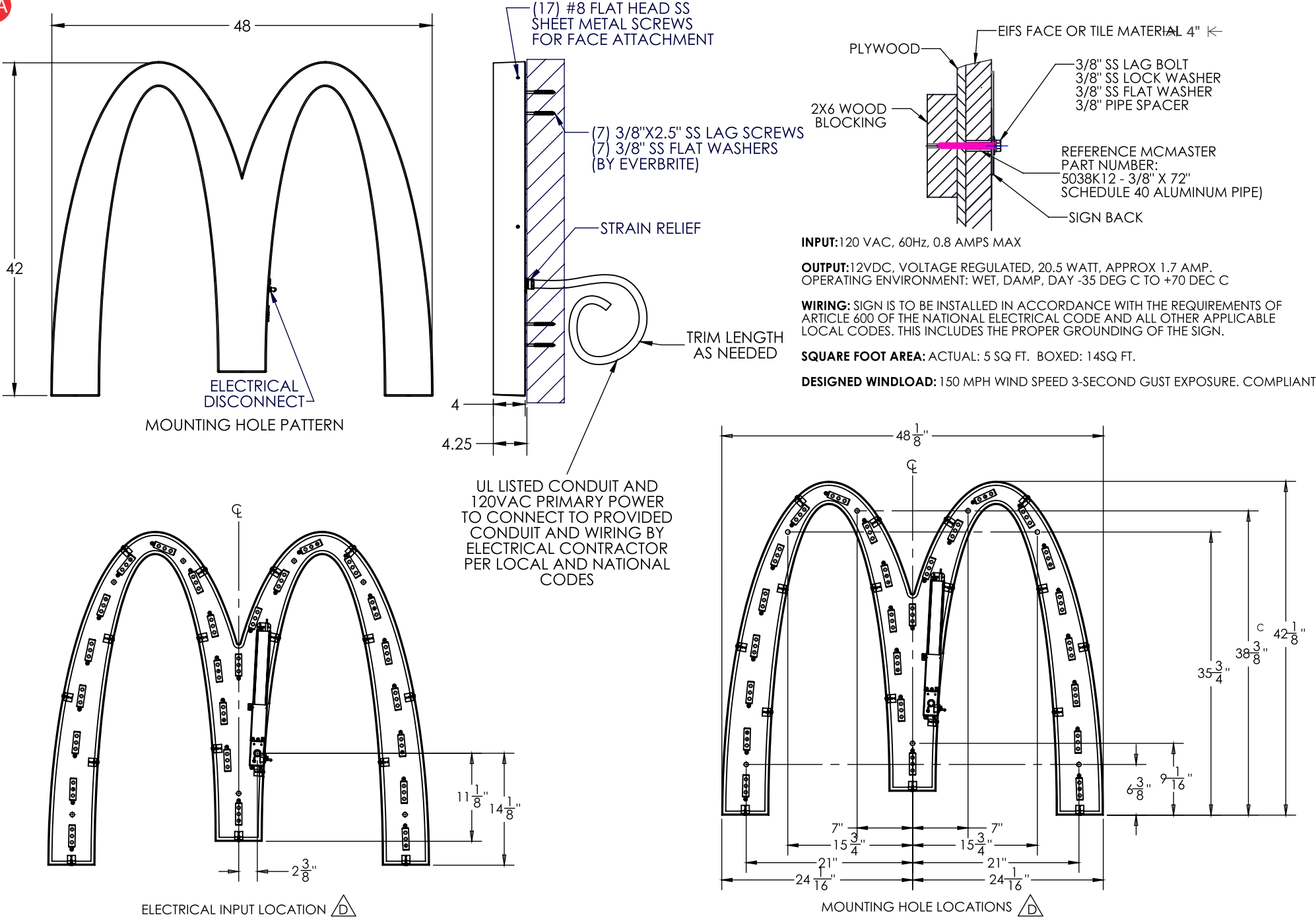


This sign is intended to be installed in accordance with the requirements of Article 600 of the National Electric Code and/or other applicable local codes. This includes proper grounding and bonding of the sign.

This is an original document created by Persona Signs, LLC provided specifically to the client for the client's personal use. This document should not be shared, reproduced, disclosed or otherwise used without written permission from Persona Signs, LLC.

Customer Approval (Please Initial):

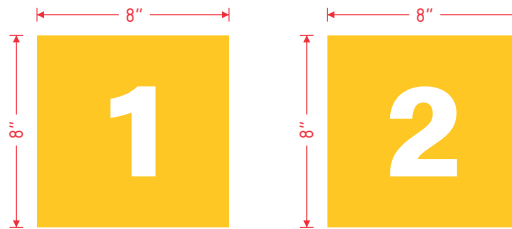
Approval Date:



SPECIFICATIONS	
NO.	PART/DESCRIPTION
1	.177" MOLDED WHITE MODIFIED ACRYLIC FACES/LETTER BODIES WITH SIDES PAINTED MCDONALD'S SILVER (OPAQUE) ON EXTERIOR
2	.040" ALUMINUM BACKS
3	.118" WHITE ABS INSERTS
4	ALUMINUM RACEWAY PAINTED MCDONALD'S SILVER
5	GE 5000K WHITE LED'S AS REQUIRED
6	LED POWER SUPPLY LOCATED INSIDE RACEWAY
7	DRAIN HOLES WITH BAFFLES AS REQUIRED

- NOTES:
- LETTER INTERIORS TO BE WHITE
 - U.L. LISTED

Pay Here
Pick Up



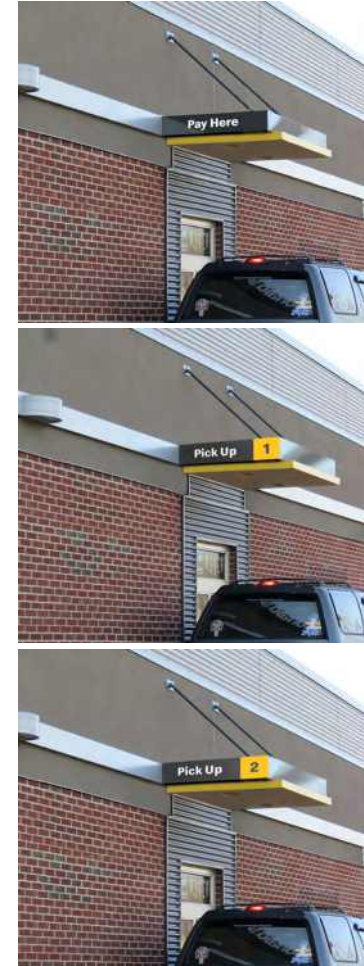
GRAPHIC DETAILS
SCALE: 1 1/2" = 1'-0"



TRELLIS POSITIONING DETAIL
SCALE: 1 1/2" = 1'-0"

SPECIFICATIONS

- 3M 7725-20 MATTE WHITE OPAQUE FILM
- 3M 7725-25 SUNFLOWER OPAQUE FILM
- FONT = SPEEDEE BOLD



SHOWN APPLIED ON TRELLIS

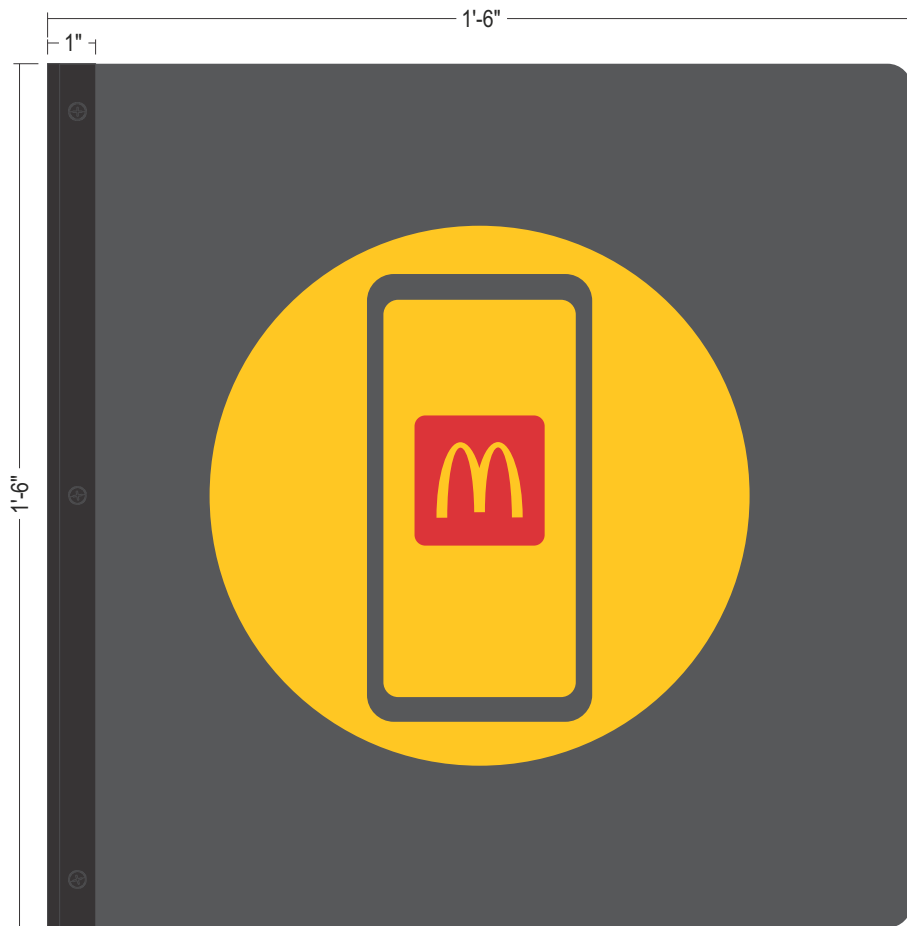


This sign is intended to be installed in accordance with the requirements of Article 600 of the National Electric Code and/or other applicable local codes. This includes proper grounding and bonding of the sign.

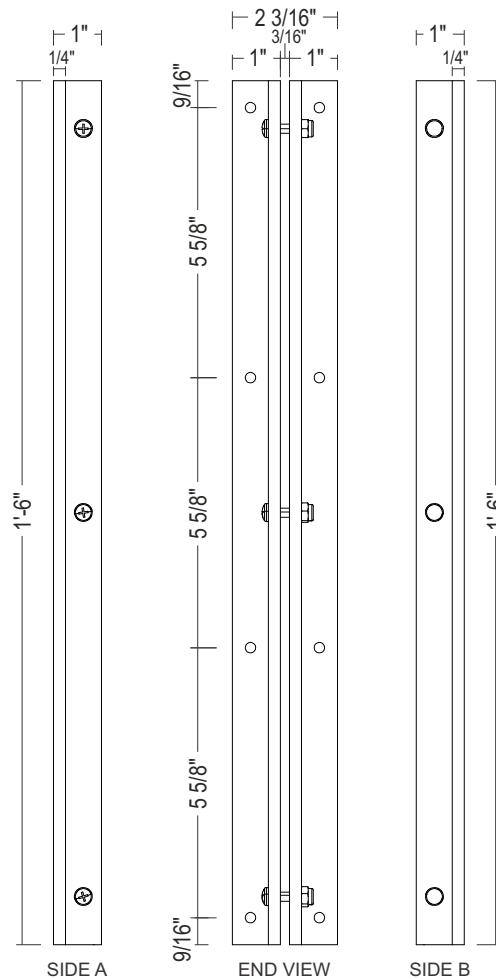
This is an original document created by Persona Signs, LLC provided specifically to the client for the client's personal use. This document should not be shared, reproduced, disclosed or otherwise used without written permission from Persona Signs, LLC.

Customer Approval (Please Initial):

Approval Date:



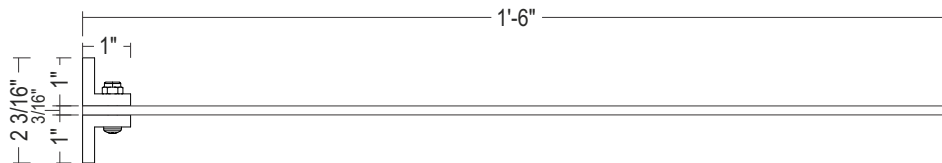
GRAPHIC DETAIL
SCALE: 3" = 1'-0"



MOUNTING BRACKET DETAIL
SCALE: 3" = 1'-0"

SPECIFICATIONS:

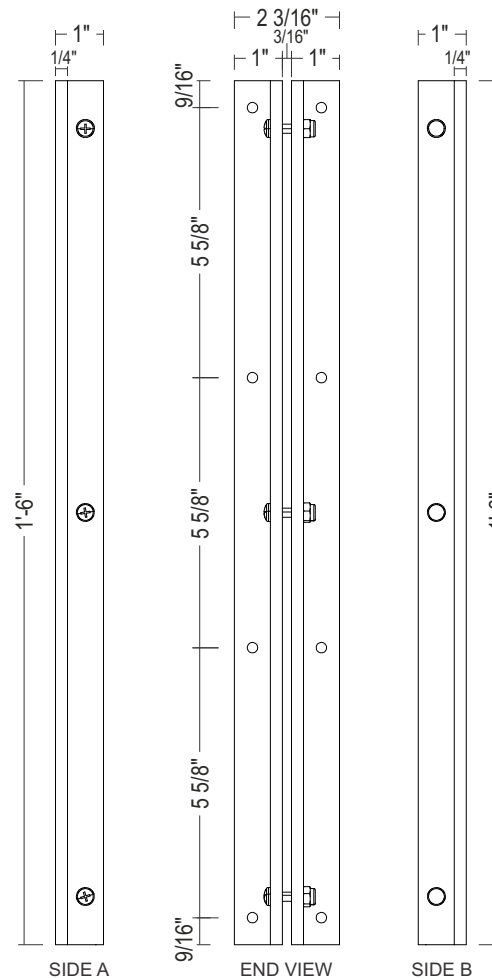
- MOUNTING BRACKET:
(2) 1" X 1" X 1/4" X 18" ALUMINUM ANGLES;
POWDER COATED BLACK
- FACE ATTACHMENT: 10-24 X .75" THREAD-
CUTTING SCREWS WITH NYLOCK NUTS,
POWDER COATED BLACK
- .187" ALUMINUM FACE, POWDER COATED TO
MATCH NG CHARCOAL
- DECORATION (BOTH SIDES):
3M 3630-33 RED FILM
3M 7725-25 YELLOW FILM
- BOXED SIGN AREA: 2.25 SQ FT



PLAN VIEW
SCALE: 3" = 1'-0"



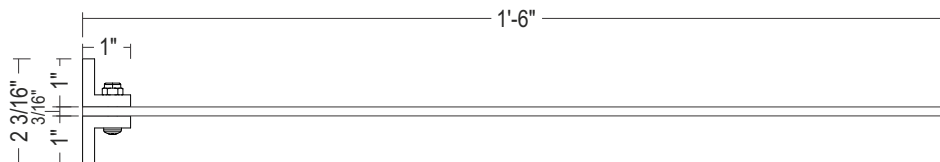
GRAPHIC DETAIL
SCALE: 3" = 1'-0"



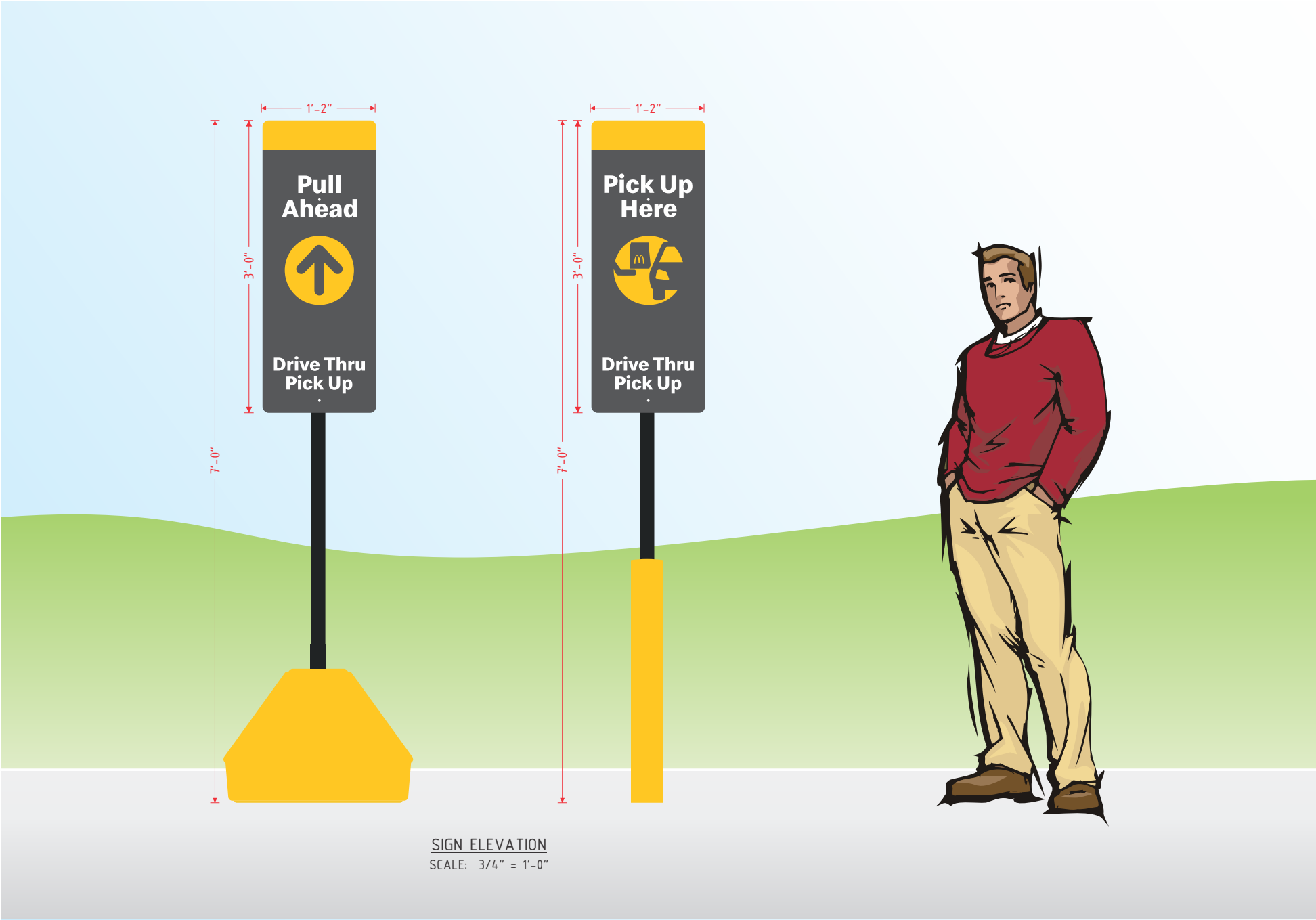
MOUNTING BRACKET DETAIL
SCALE: 3" = 1'-0"

SPECIFICATIONS:

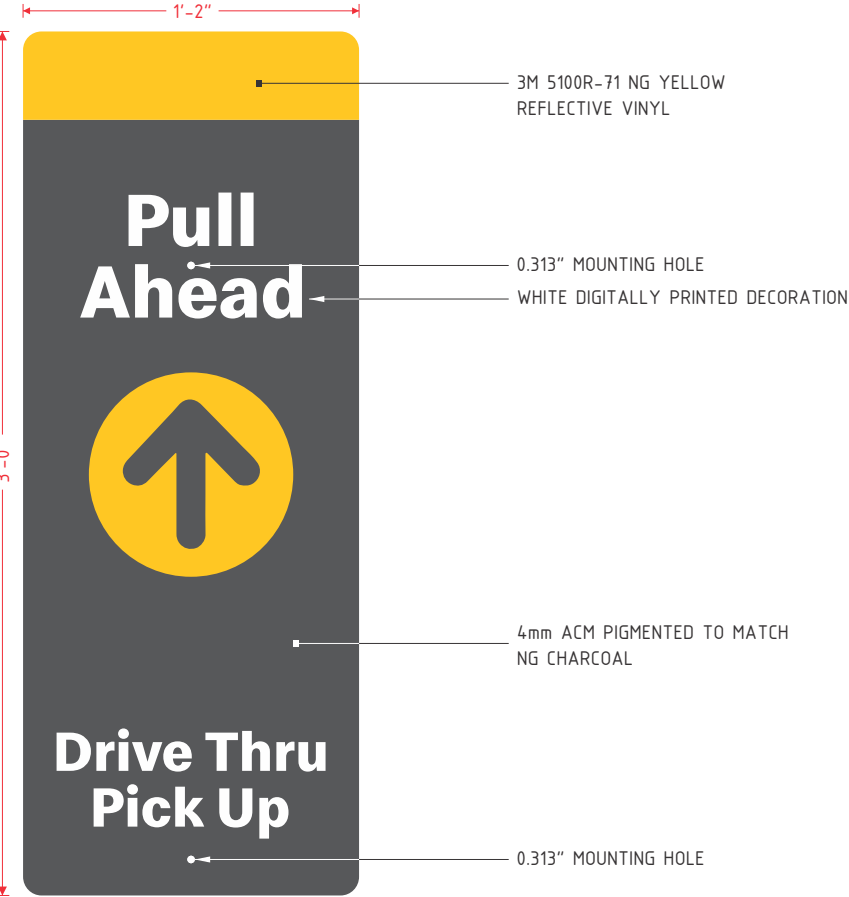
- MOUNTING BRACKET:
(2) 1" X 1" X 1/4" X 18" ALUMINUM ANGLES;
POWDER COATED BLACK
- FACE ATTACHMENT: 10-24 X .75" THREAD-
CUTTING SCREWS WITH NYLOCK NUTS,
POWDER COATED BLACK
- .187" ALUMINUM FACE, POWDER COATED TO
MATCH NG CHARCOAL
- DECORATION (BOTH SIDES):
3M 3630-33 RED FILM
3M 7725-25 YELLOW FILM
3M 7725-20 WHITE FILM
- BOXED SIGN AREA: 2.25 SQ FT



PLAN VIEW
SCALE: 3" = 1'-0"



SIGN ELEVATION
SCALE: 3/4" = 1'-0"

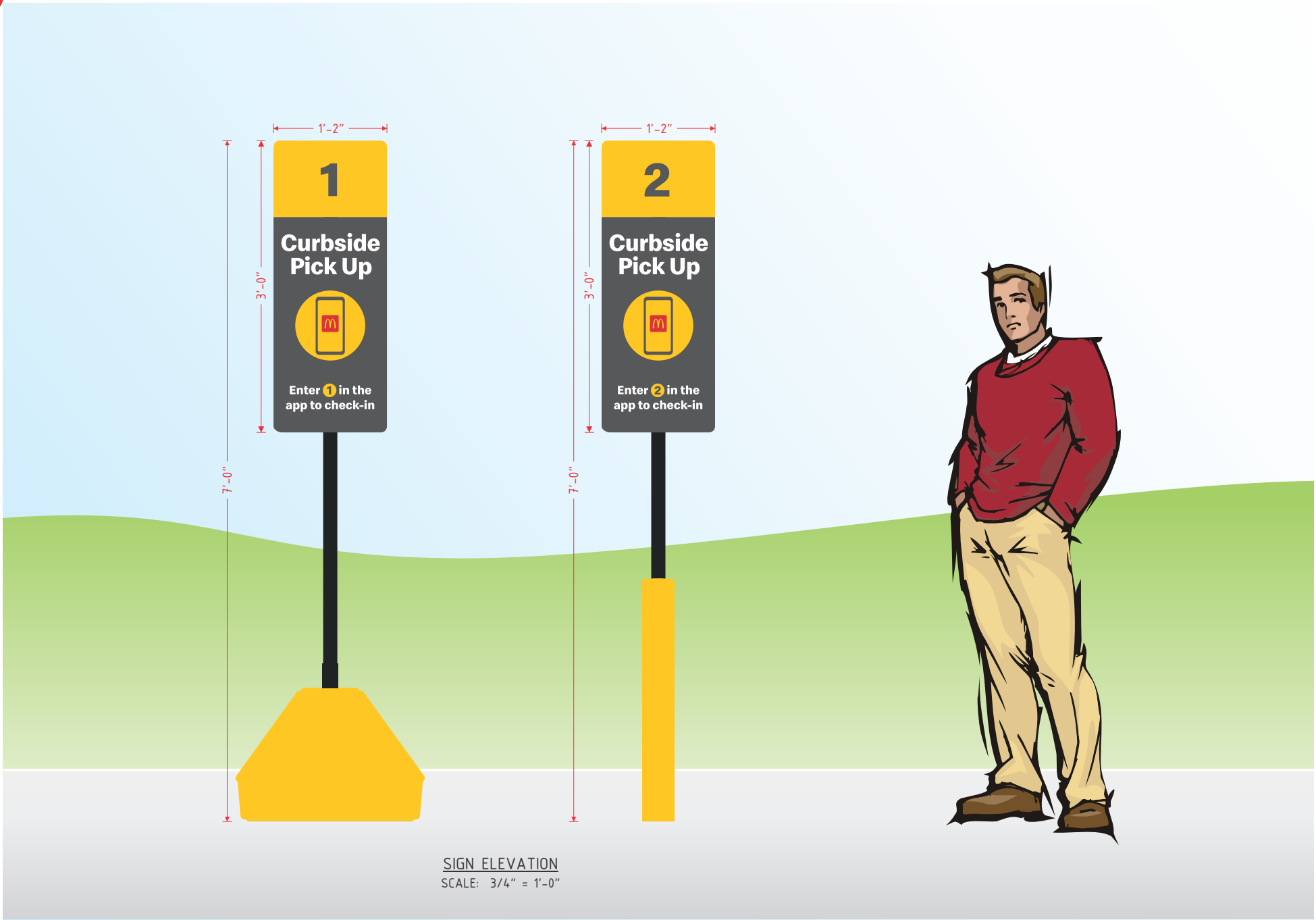


GRAPHIC DETAIL
SCALE: 1 1/2" = 1'-0"

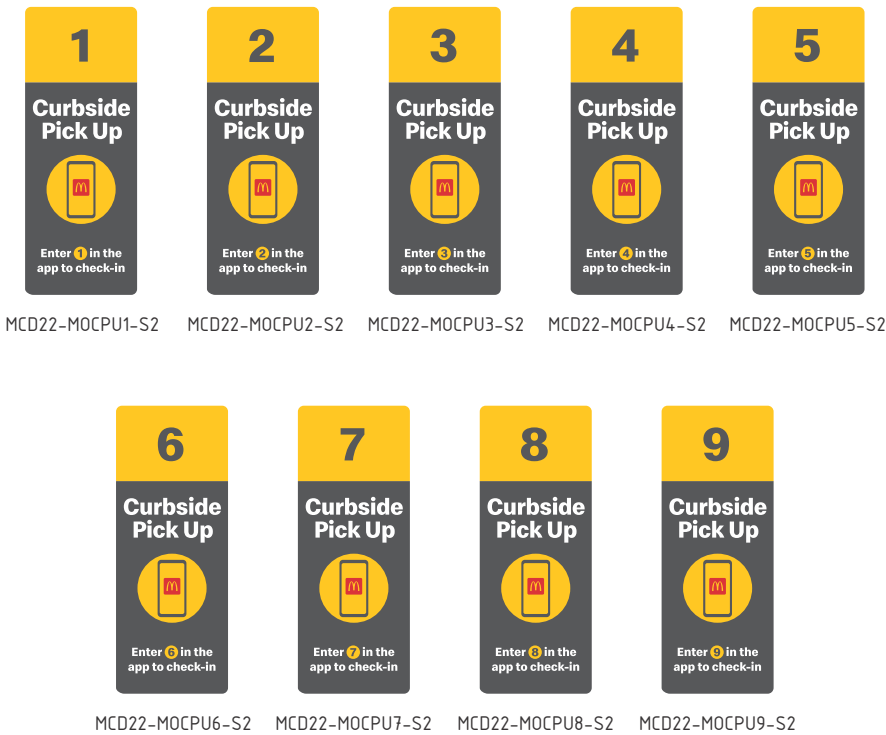


AVAILABLE FACES
SCALE: 3/4" = 1'-0"

DRIVE THRU RESERVED SIGN DETAIL
DESIGN FACTOR: TBD
4mm ACM PIGMENTED TO MATCH NG CHARCOAL
WHITE DIGITALLY PRINTED GRAPHICS
REFLECTIVE YELLOW VINYL NUMBER BACKGROUND
3.50 SQUARE FEET

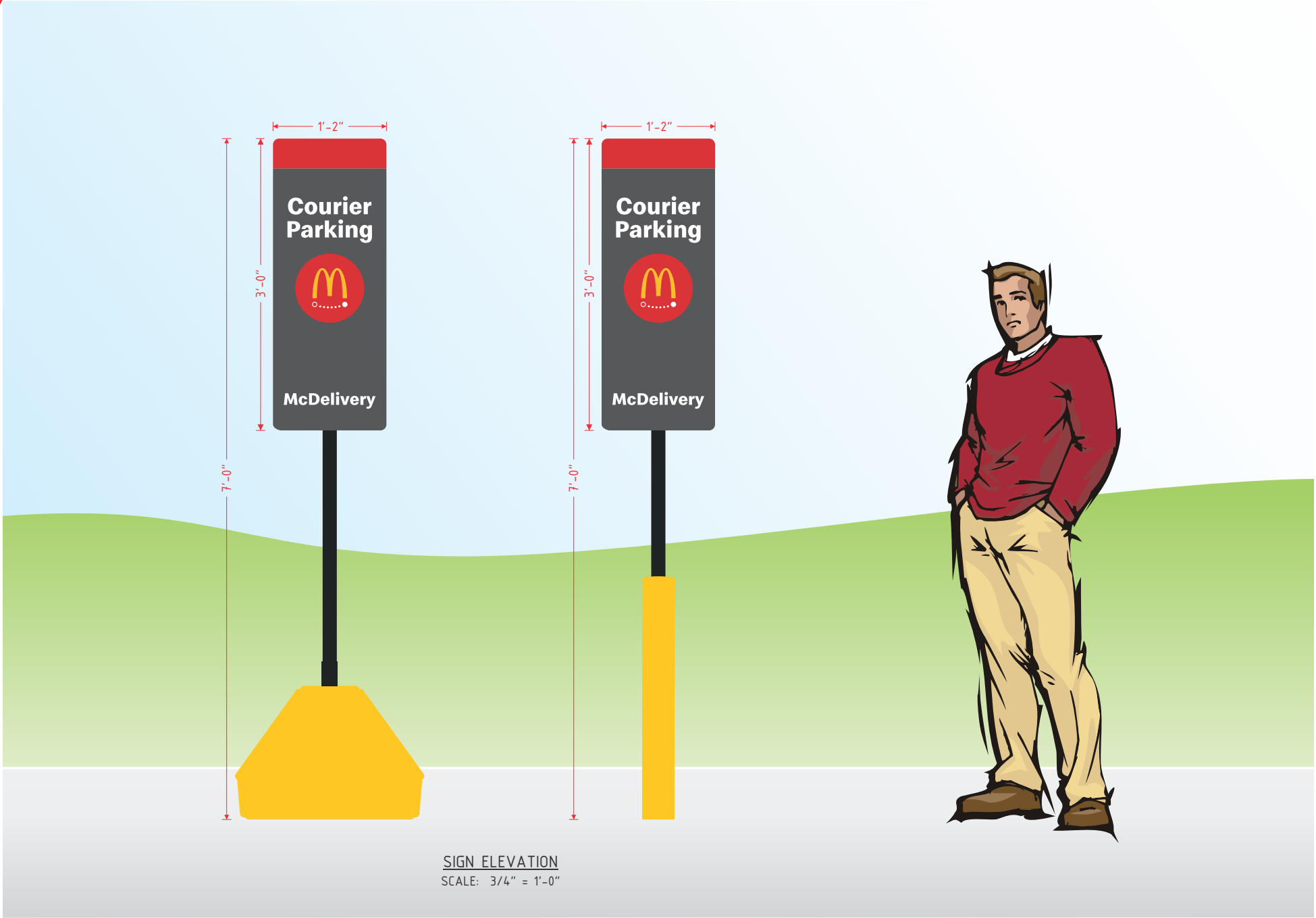


GRAPHIC DETAIL
SCALE: 1 1/2" = 1'-0"



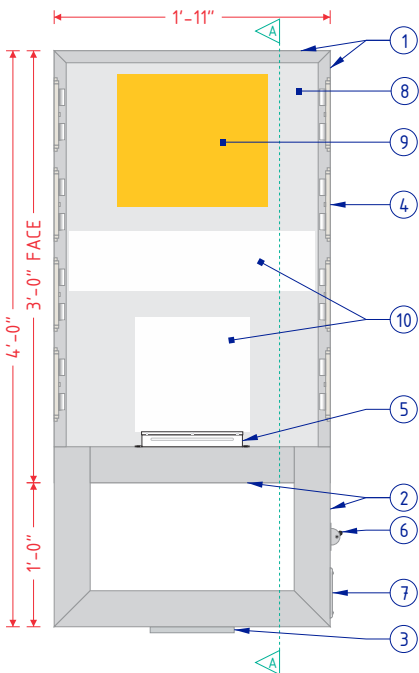
AVAILABLE FACES
SCALE: 1/2" = 1'-0"

MOBILE ORDER CURBSIDE PICKUP SIGN DETAIL
DESIGN FACTOR: TBD
4mm ACM PIGMENTED TO MATCH NG CHARCOAL
WHITE, YELLOW, & RED DIGITALLY PRINTED GRAPHICS
REFLECTIVE YELLOW VINYL NUMBER BACKGROUND
3.50 SQUARE FEET

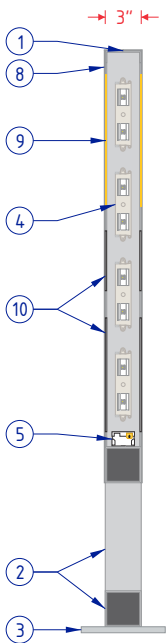


GRAPHIC DETAIL
SCALE: 1 1/2" = 1'-0"

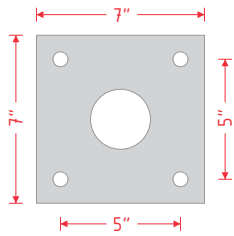
COURIER PARKING SIGN DETAIL
DESIGN FACTOR: TBD
4mm ACM PIGMENTED TO MATCH NG CHARCOAL
WHITE, YELLOW, & RED DIGITALLY PRINTED GRAPHICS
REFLECTIVE YELLOW VINYL NUMBER BACKGROUND
3.50 SQUARE FEET



FRAME & LAMP DETAIL
SCALE: 3/4" = 1'-0"



CROSS SECTION A-A
SCALE: 3/4" = 1'-0"



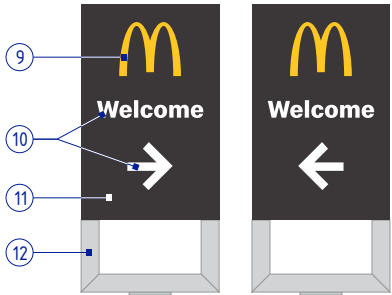
1/2" X 7" X 7" ALUMINUM PLATE
5/8" BOLT HOLES
2 1/2" CENTER HOLE

PLATE DETAIL
SCALE: 1 1/2" = 1'-0"

MCDONALD'S 48" NEXT GEN DIRECTIONAL SPECIFICATIONS	
NO.	PART/DESCRIPTION
1	3" X 1" X 1/8" ALUMINUM C-CHANNEL
2	3" X 3" X 1/8" ALUMINUM TUBE
3	MOUNTING PLATE (SEE PLATE DETAIL)
4	WHITE LED'S AS REQUIRED
5	LED POWER SUPPLIES AS REQUIRED
6	DISCONNECT SWITCH
7	ELECTRICAL CONNECTION ACCESS THROUGH COVER
8	.080" ROUTED ALUMINUM SHOEBOX FACES
9	.118" NG YELLOW SOLAR GRADE POLYCARBONATE BACKER PANEL
10	.118" NG WHITE SOLAR GRADE POLYCARBONATE BACKER PANEL
11	POWDERCOAT HENTZEN #P90353APC (OR PAINT TO MATCH)
12	PAINT TO MATCH SILVER OR METALLIC GRAY

NOTES:

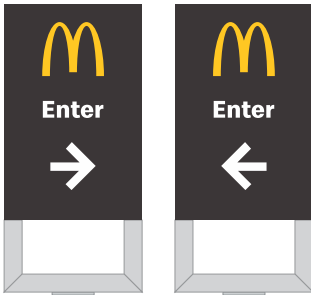
- DESIGN FACTOR: TO BE DETERMINED
- 3" X 1/8" ALUMINUM C-CHANNEL FRAME
- ROUTED ALUMINUM SHOTEBOX FACES
- EXTERIOR FINISH:
 - FACES - POWDERCOAT HENTZEN #P90353APC (OR PAINT TO MATCH)
 - TUBES AND PLATE - PAINT SILVER OR METALLIC GRAY
- INTERIOR FINISH: PAINT REFLECTIVE WHITE
- FACES REMOVABLE FOR SERVICE ACCESS
- U.L. LISTED
- ELECTRICAL: 1.10 AMPS/120 VOLTS
- SQUARE FOOTAGE:
 - FACE = 5.75
 - DISPLAY = 7.67



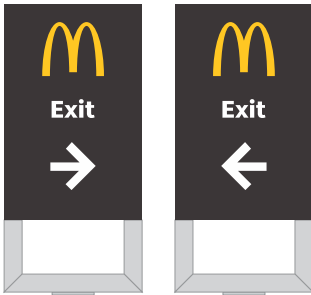
MCD-NG48DIRARCHWEL-S



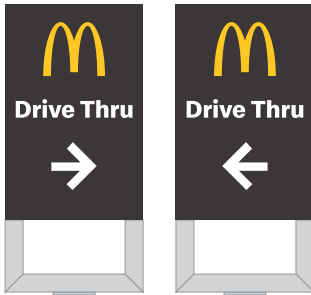
MCD-NG48DIRARCHTY-S



MCD-NG48DIRARCHENT-S

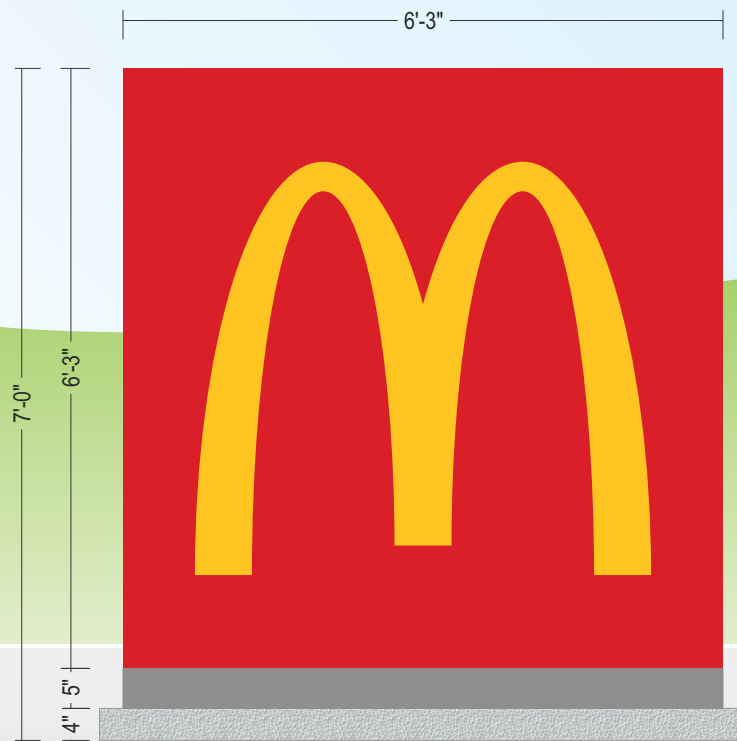


MCD-NG48DIRARCHEXIT-S



MCD-NG48DIRARCHDT-S

GRAPHIC DETAIL
SCALE: 3/8" = 1'-0"



ELEVATION
SCALE: 1/2" = 1'-0"



This sign is intended to be installed in accordance with the requirements of Article 600 of the National Electric Code and/or other applicable local codes. This includes proper grounding and bonding of the sign.

This is an original document created by Persona Signs, LLC provided specifically to the client for the client's personal use. This document should not be shared, reproduced, disclosed or otherwise used without written permission from Persona Signs, LLC.

Customer Approval (Please Initial):

Approval Date: