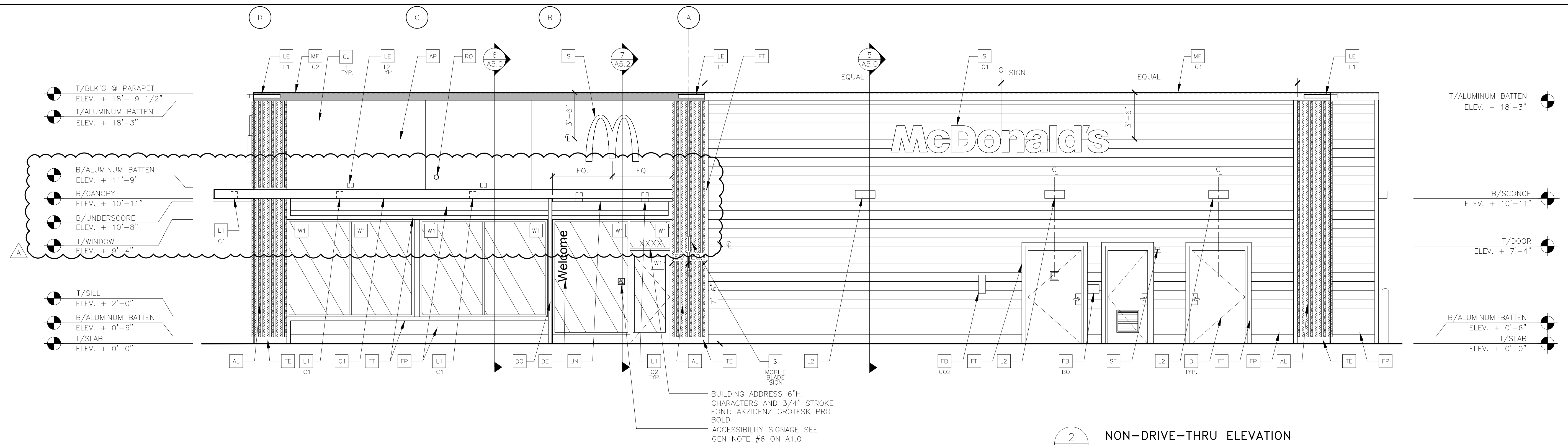


1 FRONT ELEVATION
1/4" = 1'-0"



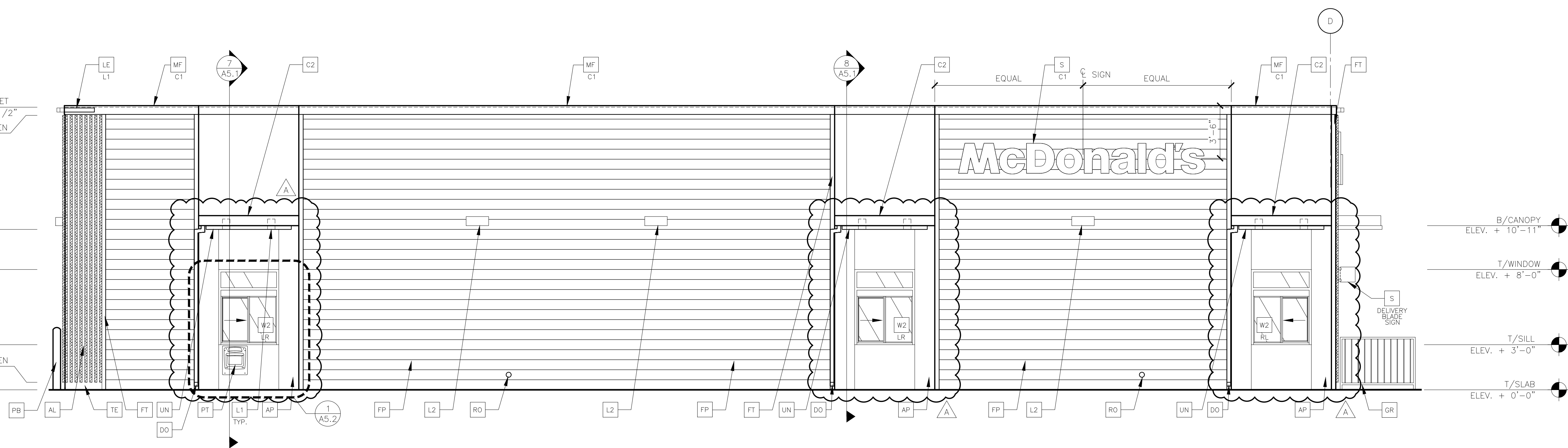
2 NON-DRIVE-THRU ELEVATION
1/4" = 1'-0"

KEY NOTES:

- AL ALUMINUM BATTEN SYSTEM
SIZE: 2"x2" PROFILE
COLOR: WOOD GRAIN, BACKRAIL UNFINISHED, ENDCAP PAINTED TO MATCH
SUBSTRATE: 1/2" EXTERIOR HIGH DENSITY OVERLAY (HDO) PLYWOOD, BB,
GROUP 1, HDO BOTH FACES, APA TRADEMARKED.
COURSE GRIT SAND SURFACES PRIOR TO PRIMING. PRIME AND PAINT BOTH
SIDES AND ALL EDGES PRIOR TO INSTALLATION.
SUBSTRATE COLOR: "IRON ORE" SW 7069 BY SHERWIN WILLIAMS
- AP ALPOLIC METAL PANEL (COLOR: DON GRAY)
- C1 ALUMINUM CANOPY SYSTEM W/FASCIA
COLOR: WHITE
- C2 ALUMINUM CANOPY SYSTEM
COLOR: RAL 7022
- C3 NOT USED
- CJ CONTROL JOINT
T-TYPE: T = EIFS
- D HOLLOW METAL DOOR
PAINT: "GAUNTLET GREY" SW7019 BY SHERWIN WILLIAMS
- DE DECAL BY GRAPHICS SUPPLIER
SURFACE APPLIED, FIELD INSTALLED, PRE CUT, PRE SPACED.
SUPPLIERS:
VOMELA (865) 330-7337, ann.bowen@vomela.com
GEX INTERNATIONAL (847) 543-4600, mcdonaldsdecor@gfxi.com
- EJ EXPANSION JOINT. SEE DETAIL 7/A4.1
- FB CO2 = CO2 = BULK CO2 FILL BOX (EQPM SCHEDULE ITEM 49.00)
BO = BULK OIL FILL BOX (EQPM SCHEDULE ITEM 700.18)
- FR FIBER CEMENT LAP SIDING: SMOOTH HARDI-BOARD PLANK BY
JAMES HARDIE, 8-1/4" WIDTH, 7" EXPOSURE, HZ5
PAINT: "GAUNTLET GREY" SW7019 BY SHERWIN WILLIAMS
- FT FIBER CEMENT TRIM: HARDIE TRIM BOARDS 4/4 SMOOTH, 1
5/8" AND 3 1/2" WIDTH, 3/4" THICK, HZ5
PAINT: "GAUNTLET GREY" SW7019 BY SHERWIN WILLIAMS
- GR GUARD RAIL -SEE SITE PLAN FOR EXACT LOCATION AND LENGTH
PAINT: "IRON ORE" SW 7069 BY SHERWIN WILLIAMS
- L1 RECESSED DOWN LIGHT FIXTURE - SEE ELECTRICAL
C1= COLOR:
C1= WHITE
C2= GOLD
- L2 RADIAL SCENCE LIGHT FIXTURE - SEE ELECTRICAL
COLOR: PLATINUM SILVER
- LE ACCENT LIGHTING - SEE ELECTRICAL
L1 = LED LIGHT;
L1 = SLIM LED (DOWN ONLY)
L2 = INTEGRAL CANOPY FIXTURE
- MF METAL FASCIA
T-TYPE:
1 = PRE-FAB ANCHOR-TITE FASCIA
2 = BOTTOM TRIM AT METAL REVEAL PANEL
3 = VERTICAL TRIM AT METAL REVEAL PANEL CORNERS, CLOSURES
COLOR:
C1 = WEATHERED ZINC
C2 = RAL 7022
- PB PIPE BOLLARD - PAINTED YELLOW
- PT (RMHC) COIN COLLECTOR
MODEL: #WPT STD
CALL 1-888-743-7435 TO ORDER
- RO ROOF DRAIN OVERFLOW PIPE PAINT TO MATCH SURROUNDING MATERIAL
- S McDONALD'S SIGNAGE BY OTHERS - UNDER SEPARATE PERMIT.
C1 = COLOR:
C1 = WEATHERED ZINC RACEWAY
C2 = RAL 7022 RACEWAY
- ST CO2 STROBE/ALARM. SEE MECHANICAL DRAWINGS
FOR SPECIFICATION.
- TE TRU EXTERIOR 1"x6" TRIM, PAINTED ON SITE
COLOR: "IRON ORE" SW 7069 BY SHERWIN WILLIAMS
METAL UNDERSCORE
COLOR: GOLD
- UN METAL UNDERSCORE
COLOR: GOLD
- W1 EXTERIOR WINDOW ASSEMBLY - TEMPERED GLASS
COLOR: DARK BRONZE
- W2 DRIVE-THRU WINDOW BY READY ACCESS
MODEL: 600 SERIES, 36" SERVICE HEIGHT WITH TRANSOM, MANUAL
OPEN; ELECTRONIC RELEASE
COLOR: DEEP BRONZE
SLIDE DIRECTION: RL = RIGHT TO LEFT
LR = LEFT TO RIGHT

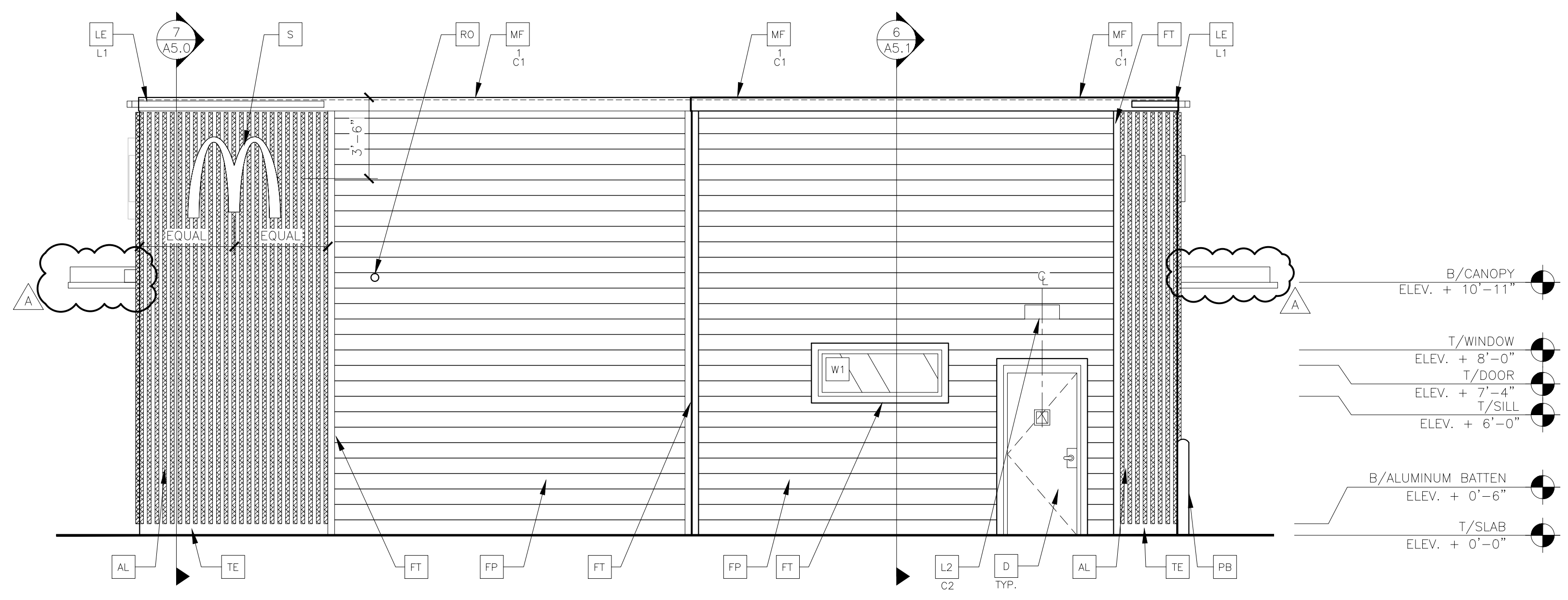
STATE OF COLORADO MARC PELINI ARC:00407183 07-11-24 LICENSED ARCHITECT EXPIRATION: 10-31-2025	PREPARED BY: CORE STATES GROUP 138 West Street Newark, NJ 07102 2022110400	PREPARED FOR: McDonald's USA, LLC These drawings and specifications are the confidential and proprietary property of McDonald's USA, LLC and shall not be copied or reproduced without written authorization. The contract documents were prepared not suitable for use on a different site or at a later time. Use of these drawings for reference or example on another project requires the contract documents for reuse on another project is not authorized.	DRAWN BY: B.ARDALLA STD ISSUE DATE: 2023 09 REVIEWED BY: M.PELINI DATE ISSUED: 09 18 2023 C.S.G. PROJECT #: MCD_37442	TITLE: 2023 STANDARD BUILDING - BB20 4584 WOOD/WOOD DESCRIPTION: WOOD BEARING WALLS W/HARDE BOARD EXTERIOR FINISH WOOD TRUSS ROOF FRAMING ALPOLIC/BATTEN/LAP SIDING EXTERIOR FINISH NSN:41163 SITE ADDRESS: 6646 MARKSHEFFEL RD., COLORADO SPRINGS, CO L/C: 005-0128	005-1028.00.0 A2.0 ELEVATIONS
--	---	--	--	--	--

- T/BLK'G @ PARAPET
ELEV. + 18'-9 1/2"
- T/ALUMINUM BATTEN
ELEV. + 18'-3"
- B/UNDERSCORE
ELEV. + 10'-8"
- T/WINDOW
ELEV. + 8'-0"
- T/SILL
ELEV. + 3'-0"
- B/ALUMINUM BATTEN
ELEV. + 0'-6"
- T/SLAB
ELEV. + 0'-0"



1 DRIVE THRU ELEVATION
A2.1 1/4" = 1'-0"

- T/BLK'G @ PARAPET
ELEV. + 18'-9 1/2"
- T/ALUMINUM BATTEN
ELEV. + 18'-2"
- T/SLAB
ELEV. + 0'-0"



2 REAR ELEVATION
A2.1 1/4" = 1'-0"

KEY NOTES:

- AL ALUMINUM BATTEN SYSTEM
SIZE: 2"x2" PROFILE
COLOR: WOOD GRAIN, BACKRAIL UNFINISHED, ENDCAP PAINTED TO MATCH
SUBSTRATE: 1/2" EXTERIOR HIGH DENSITY OVERLAY (HDO) PLYWOOD, BB, GROUP 1, HDO BOTH FACES, APA TRADEMARKED.
COURSE GRIT SAND SURFACES PRIOR TO PRIMING. PRIME AND PAINT BOTH SIDES AND ALL EDGES PRIOR TO INSTALLATION.
SUBSTRATE COLOR: "IRON ORE" SW 7069 BY SHERWIN WILLIAMS
- AP ALPOLIC METAL PANEL (COLOR: DON GRAY)
- C1 ALUMINUM CANOPY SYSTEM W/FASCIA
COLOR: WHITE
- C2 ALUMINUM CANOPY SYSTEM
COLOR: RAL 7022
- C3 NOT USED
- CJ CONTROL JOINT
T-TYPE: 1 = EIFS
- D HOLLOW METAL DOOR
PAINT: "GAUNTLET GREY" SW7019 BY SHERWIN WILLIAMS
- DE DECAL BY GRAPHICS SUPPLIER
SURFACE APPLIED, FIELD INSTALLED, PRE CUT, PRE SPACED.
SUPPLIERS:
VOMELA (865) 330-7337, ann.bowen@vomela.com
GFX INTERNATIONAL (847) 543-4600, mcdonaldsdecor@gfxi.com
- EJ EXPANSION JOINT. SEE DETAIL 7/A4.1
- FB C02 = BULK C02 FILL BOX (EQM SCHEDULE ITEM 49.00)
B0 = BULK OIL FILL BOX (EQM SCHEDULE ITEM 700.18)
- FR FIBER CEMENT LAP SIDING: SMOOTH HARDI-BEARD PLANK BY JAMES HARDIE, 8-1/4" WIDTH, 7" EXPOSURE, HZ5
PAINT: "GAUNTLET GREY" SW7019 BY SHERWIN WILLIAMS
- FT FIBER CEMENT TRIM: HARDIE TRIM BOARDS 4/4 SMOOTH, 1 5/8" AND 3 1/2" WIDTH, 3/4" THICK, HZ5
PAINT: "GAUNTLET GREY" SW7019 BY SHERWIN WILLIAMS
- GR GUARD RAIL - SEE SITE PLAN FOR EXACT LOCATION AND LENGTH
PAINT: "IRON ORE" SW 7069 BY SHERWIN WILLIAMS
- L1 RECESSED DOWN LIGHT FIXTURE - SEE ELECTRICAL
C1-COLOR:
C1 = WHITE
C2 = GOLD
- L2 RADIAL SCONCE LIGHT FIXTURE - SEE ELECTRICAL
COLOR: PLATINUM SILVER
- LE ACCENT LIGHTING - SEE ELECTRICAL
L1 - LED LIGHT:
L1 = SLIM LED (DOWN ONLY)
L2 = INTEGRAL CANOPY FIXTURE
- MF METAL FASCIA
T-TYPE:
1 = PRE-FAB ANCHOR-TITE FASCIA
2 = BOTTOM TRIM AT METAL REVEAL PANEL
3 = VERTICAL TRIM AT METAL REVEAL PANEL CORNERS, CLOSURES
COLOR:
C1 = WEATHERED ZINC
C2 = RAL 7022
- PB PIPE BOLLARD - PAINTED YELLOW
- PT (RMHC) COIN COLLECTOR
MODEL: #WPT STD
CALL 1-888-743-7435 TO ORDER
- RO ROOF DRAIN OVERFLOW PIPE PAINT TO MATCH SURROUNDING MATERIAL
- S McDONALD'S SIGNAGE BY OTHERS - UNDER SEPARATE PERMIT.
C1-COLOR:
C1 = WEATHERED ZINC RACEWAY
C2 = RAL 7022 RACEWAY
- ST C02 STROBE/ALARM. SEE MECHANICAL DRAWINGS FOR SPECIFICATION.
- TE TRU EXTERIOR 1"x6" TRIM, PAINTED ON SITE
COLOR: "IRON ORE" SW 7069 BY SHERWIN WILLIAMS
- UN METAL UNDERSCORE
COLOR: GOLD
- W1 EXTERIOR WINDOW ASSEMBLY - TEMPERED GLASS
COLOR: DARK BRONZE
- W2 DRIVE-THRU WINDOW BY READY ACCESS
MODEL: 600 SERIES, 36" SERVICE HEIGHT WITH TRANSM, MANUAL OPEN, ELECTRONIC RELEASE
COLOR: DEEP BRONZE
SLIDE DIRECTION: RL = RIGHT TO LEFT
LR = LEFT TO RIGHT

STATE OF COLORADO MARC PELINI ARC 00407183 07-11-24 LICENSED ARCHITECT EXPIRATION: 10-31-2025	PREPARED BY: CORE STATES GROUP 138 West Street Newport, LA 70090 2025.04.08	PREPARED FOR: McDonald's USA, LLC These drawings and specifications are the confidential and proprietary property of McDonald's USA, LLC and shall not be copied or reproduced without written authorization. The contract documents were prepared not suitable for use on a different site or at a later time. Use of these drawings for reference or example on another project requires the the contract documents for reuse on another project is not authorized.	DRAWN BY: B.ARDALLA STD ISSUE DATE 2023.09 REVIEWED BY: M.PELINI DATE ISSUED 09.18.2023 C.S.G. PROJECT # MCD.37442	TITLE 2023 STANDARD BUILDING - BB20 4584 WOOD/WOOD DESCRIPTION WOOD BEARING WALLS W/HARDE BOARD EXTERIOR FINISH WOOD TRUSS ROOF FRAMING ALPOLIC/BATTEN/LAP SIDING EXTERIOR FINISH NSN-41163 L/C: 005-0128 6646 MARKSHEFFEL RD. COLORADO SPRINGS, CO	SHEET NO. 005-1028.00.0 A2.1 ELEVATIONS	DATE 07/08/24	REV A	DESCRIPTION PROTO UPDATES	BY NC
--	--	--	---	---	---	------------------	----------	------------------------------	----------