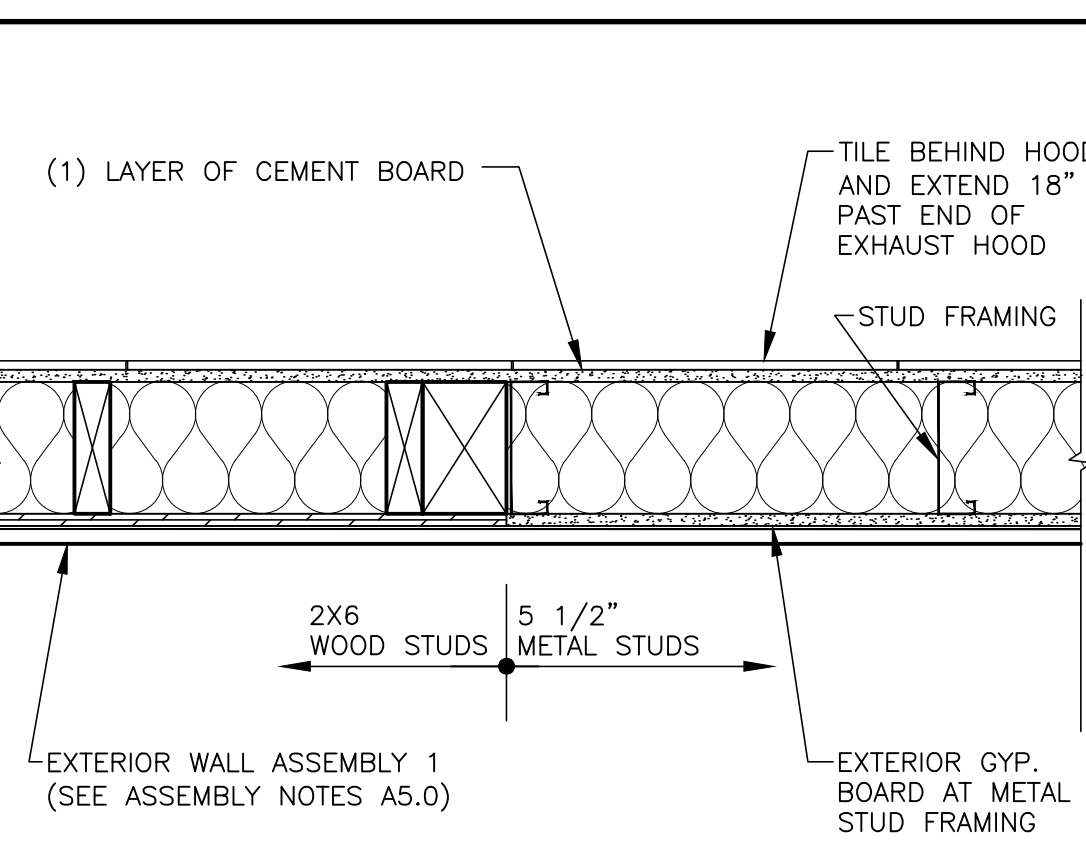
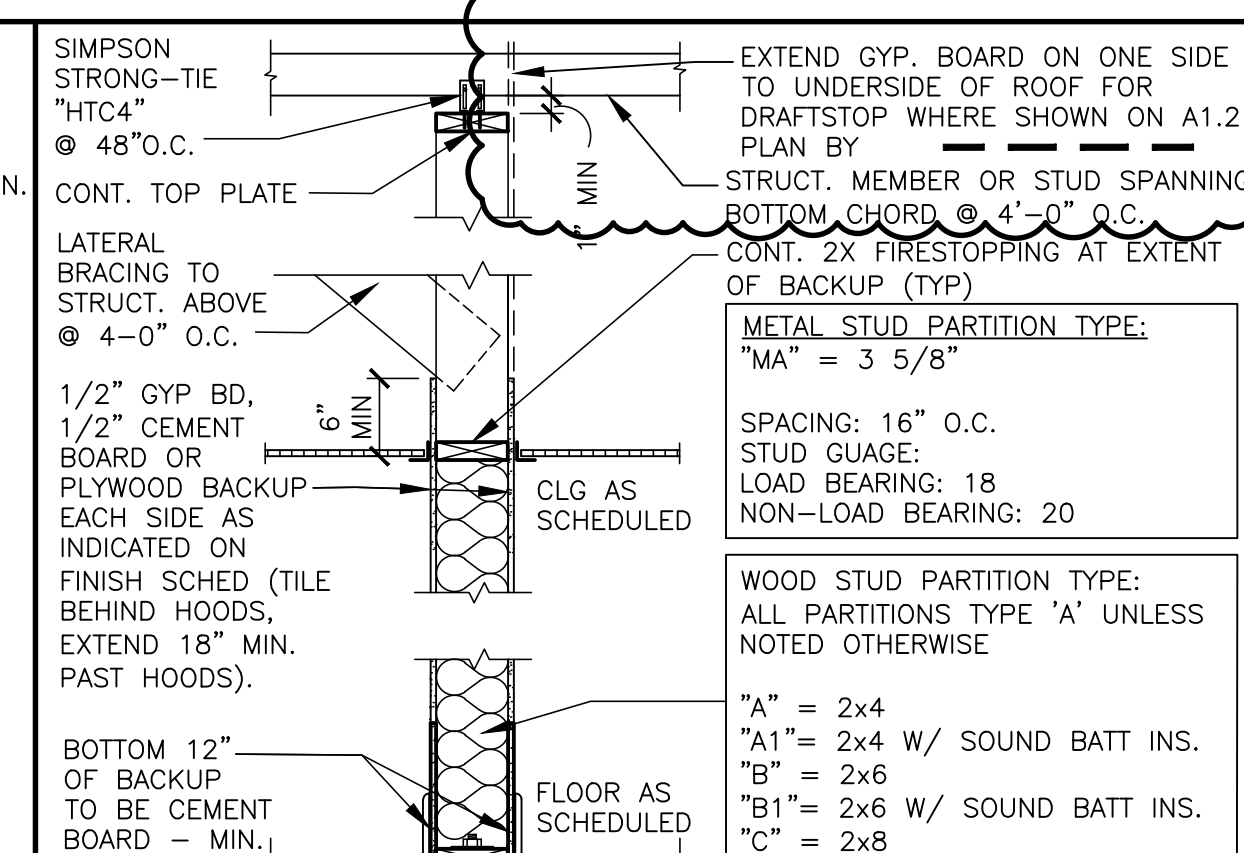


1 FLOOR PLAN
1/4" = 1'-0"



3 TRANSITION DETAIL
1 1/2" = 1'-0"



2 INTERIOR PARTITION
3/4" = 1'-0"

- KEY NOTES**
- [C] ALUMINUM CANOPY SYSTEM ABOVE - SEE 4/A5.0 FOR NOTES - SEE ROOF PLAN FOR DIMENSIONS, SEE ELEVATION FOR COLORS AND FASCIA LOCATIONS
 - [G.C.] G.C. TO PROVIDE 4"x4"x5'-0" HIGH STAINLESS STEEL CORNER GUARDS AT ALL EXPOSED LOCATIONS IN KITCHEN/SUPPORT AREA. CORNER GUARDS TO START AT FINISH FLOOR. ATTACH WITH WOOD SCREWS INTO WOOD BLOCKING BULLNOSE COVE BASE WHERE TILE MEETS STAINLESS STEEL CORNER
 - [CP] CONCRETE EQMT PAD - SEE STRUCTURAL
 - [CT] WALL TILE: PER DECOR PORTFOLIO GEOMETRY/LUNA/RAY: EUROWEST - 754-747. COLOR: NOIR, SIZE: 4"x12", PATTERN: RUNNING BOND. GROUT: MAPEI O2 PEWTER - JOINT TO BE 3/8" MAX. ROUTE 66: EUROWEST - WHITE GLOSSY CHEVRON GROUT: CHARCOAL 47 - JOINT TO BE 3/8" MAX.
 - [CT] WALL TILE: CROSSVILLE - COLOR BY NUMBERS COLOR: LATE-NIGHT WINDOW (OPTIONAL) BY READYACCESS, SIZE: 4"x12", PATTERN: RUNNING BOND. USE THIS TILE WHEN HIGH LRV IS REQUIRED. COORDINATE WITH McDONALD'S AREA CONSTRUCTION MANAGER
 - [DE] DECOR ELEMENT - VERIFY SIZE AND PLACEMENT WITH DECOR DOWNSPOUT CONNECTED TO CANOPY SYSTEM. SEE ELEVATIONS. COORDINATE CONNECTION WITH CIVIL.
 - [DF] NOT USED
 - [DS] DROPPED SOFFIT ABOVE - SEE REFLECTED CEILING PLAN
 - [FB CO2] CO2 FILL BOX (EQUIPMENT SCHEDULE ITEM 49.00)
 - [FB BO] OPTIONAL BULK OIL FILL BOX (EQPM SCHEDULE ITEM 700.18) CONFIRM USE WITH McDONALD'S AREA CONSTRUCTION MANAGER
 - [FL] FLOOR LINE - CHANGE IN MATERIAL - SEE DECOR DRAWINGS
 - [FP] FIBERGLASS REINFORCED PLASTIC (FRP) - PANOLAM, GRAY SMOOTH, CLASS A, .075. REFER TO ROOM FINISH SCHEDULE SHEET A6.1 FOR INSTALLATION LOCATIONS. FOR ORDERING, CONTACT KIMBERLY LAWSON Kimberly.Lawson@panolam.com 1-866-925-4377
 - [FW] LINE OF FROST WALL; SEE SECTIONS AND STRUCTURAL DRAWINGS FOR MORE INFORMATION
 - [LL 5x5] LEVEL LANDING @ EXT. DOOR W/ MAX. 2% RUNNING/CROSS SLOPE AWAY FROM BUILDING
 - [LW] SIZE OF LANDING
 - [MS] LATE-NIGHT WINDOW (OPTIONAL) BY READYACCESS, MANUAL OPEN/SELF CLOSE. SEE SHEET A3.1 FOR NOTES.
 - [MOP] MOP SINK - SEE DETAIL 8/A6.1 AND PLUMBING DRAWINGS.
 - [RL] ROOF ACCESS LADDER W/HATCH ABOVE SEE STRUCTURAL FRAMING PLAN FOR LOCATING DIMENSIONS

- SYMBOL LEGEND**
- [A] PARTITION TYPE TAG - SEE 2/A1.0
 - [A] DRAFT STOPPING - SEE 2/A1.2
 - [7] DOOR TAG - SEE DOOR SCHEDULE ON A6.0
 - [X] KEY NOTE
- GENERAL NOTES**
1. EXTERIOR DIMENSIONS ARE TO COLUMN REFERENCE LINES AND EXTERIOR FACE OF MASONRY UNLESS OTHERWISE NOTED. INTERIOR DIMENSIONS ARE TO FACE OF INTERIOR WALL BOARD
 2. SEE 4/A5.0 FOR EXTERIOR WALL ASSEMBLY TYPES. SEE 2/A1.0 FOR INTERIOR PARTITION TYPES. INTERIOR PARTITIONS ARE TYPE 'A' UNLESS NOTED OTHERWISE.
 3. SEE EXTERIOR ELEVATIONS FOR WINDOW TYPES
 4. SEE SHEET A6.0 FOR DOOR AND ROOM FINISH SCHEDULES
 5. SEE SITE PLAN FOR SIDEWALKS, RAMPS, ETC.
 6. GC TO PROVIDE ADA SIGNAGE PACKAGE AND INSTALL SIGNS AT LOCATIONS AND POSITIONS INDICATED IN PACKAGE OR AS REQUIRED BY LOCAL CODES. SIGNAGE PACKAGE SUPPLIED BY: FRANKES/S2K 1-800-423-5247 www.frankesupply.com email: fs-frankesupply.us@franke.com
 7. MAXIMUM OCCUPANCY SIGN TO BE POSTED PER LOCAL CODE. SIGN FURNISHED AND INSTALLED BY GENERAL CONTRACTOR.
 8. ALL HANDSINK LOCATIONS SHALL HAVE CEMENT BOARD BACKING 48" IN HEIGHT A.F.F.
 9. GC TO COORDINATE ALL REQUIRED BLOCKING FOR WALL HUNG EQUIPMENT, SHELVES, ETC. FOR PROPER INSTALLATION HEIGHTS.
 10. KNOX BOX TO BE INSTALLED PER LOCAL CODE AS REQUIRED. MODEL AND LOCATION TO BE COORDINATED WITH FIRE MARSHALL.

STATE OF COLORADO MARC PELINI ARC 0007183 07-11-24 EXPIRATION: 10-31-2025 LICENSED ARCHITECT	PREPARED BY: CORE STATES GROUP 133 Water Street Norwalk, CT 06854 corestates.com	PREPARED FOR: McDonald's USA, LLC These drawings and specifications are the confidential and proprietary property of McDonald's USA, LLC and shall not be copied or reproduced without written authorization. The contract documents were prepared not suitable for use on a different site or at a later time. Use of these drawings for reference or example on another project requires the contract documents for reuse on another project is not authorized.	DRAWN BY: B.ABDALLA	STD ISSUE DATE: 2023 09	REVIEWED BY: M.PELINI	DATE ISSUED: 09 18 2023	C.S.G. PROJECT #: MCD.37442	TITLE: 2023 STANDARD BUILDING - BB20 4584 WOOD/WOOD	DESCRIPTION: WOOD BEARING WALLS W/HARDBOARD EXTERIOR FINISH WOOD TRUSS ROOF FRAMING ALPOUC/BATENA/LAP SIDING EXTERIOR FINISH	NSK-41163 L/C: 005-0128	SHEET NO: 005-1028.00.0 A1.0 FLOOR PLAN	REV A 07/08/24	DATE	PROTO. UPDATES	NG BY	DESCRIPTION
---	---	--	------------------------	----------------------------	--------------------------	----------------------------	--------------------------------	---	---	----------------------------	---	----------------------	------	----------------	----------	-------------