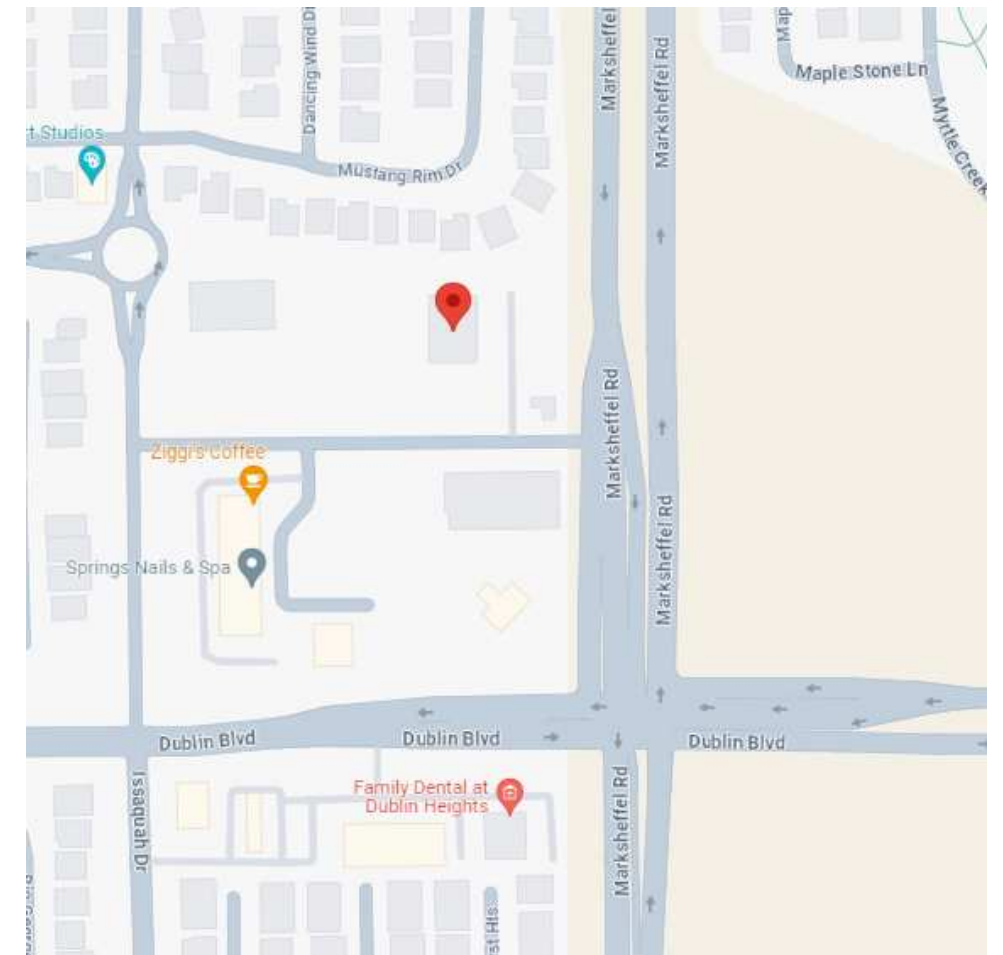




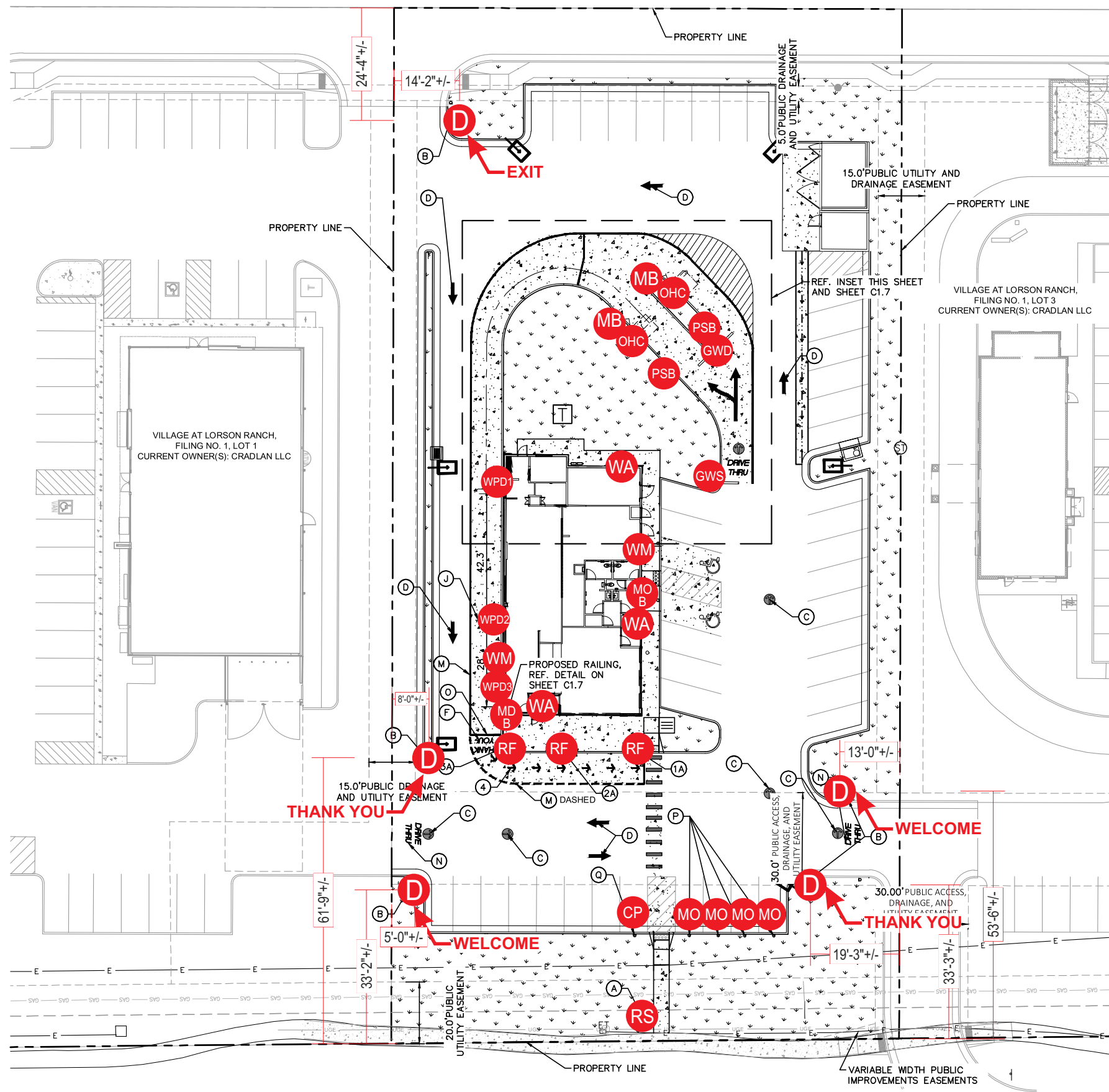
# McDonald's

6646 MARKSHEFFEL ROAD - COLORADO SPRINGS, CO 80925

## SIGN PROGRAM BOOK



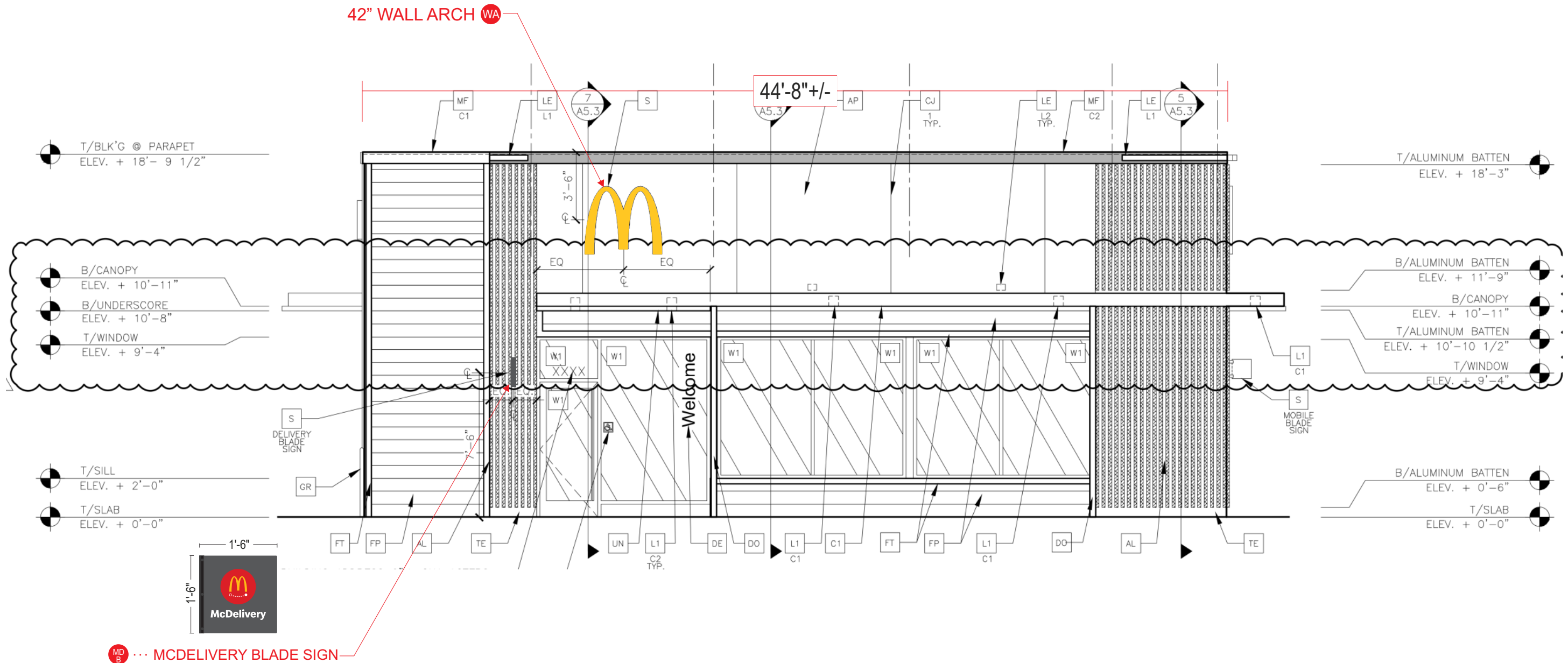
VICINITY MAP  
NTS



- PSB ..... PRE-SELL BOARD (QTY 2)
- GWD ..... DOUBLE ARM GATEWAY
- GWS ..... SINGLE ARM GATEWAY
- OHC ..... ORDER HERE CANOPY (QTY 2)
- MB ..... MENU BOARD (QTY 2)
- WPD1 ..... WINDOW POSITION DECAL 1
- WPD2 ..... WINDOW POSITION DECAL 2
- WPD3 ..... WINDOW POSITION DECAL 3
- PF ..... ROLL FORWARD SIGN (QTY 3)
- MO ..... MOBILE ORDER SIGN (QTY 4)
- CP ..... COURIER PARKING SIGN
- WA ..... WALL ARCH (QTY 3)
- WM ..... 24" WORDMARK (QTY 2)
- MO<sub>B</sub> ..... MOBILE ORDER BLADE SIGN
- MD<sub>B</sub> ..... MCDelivery BLADE SIGN
- D ..... DIRECTIONAL (QTY 5)
- RS ..... ROAD SIGN

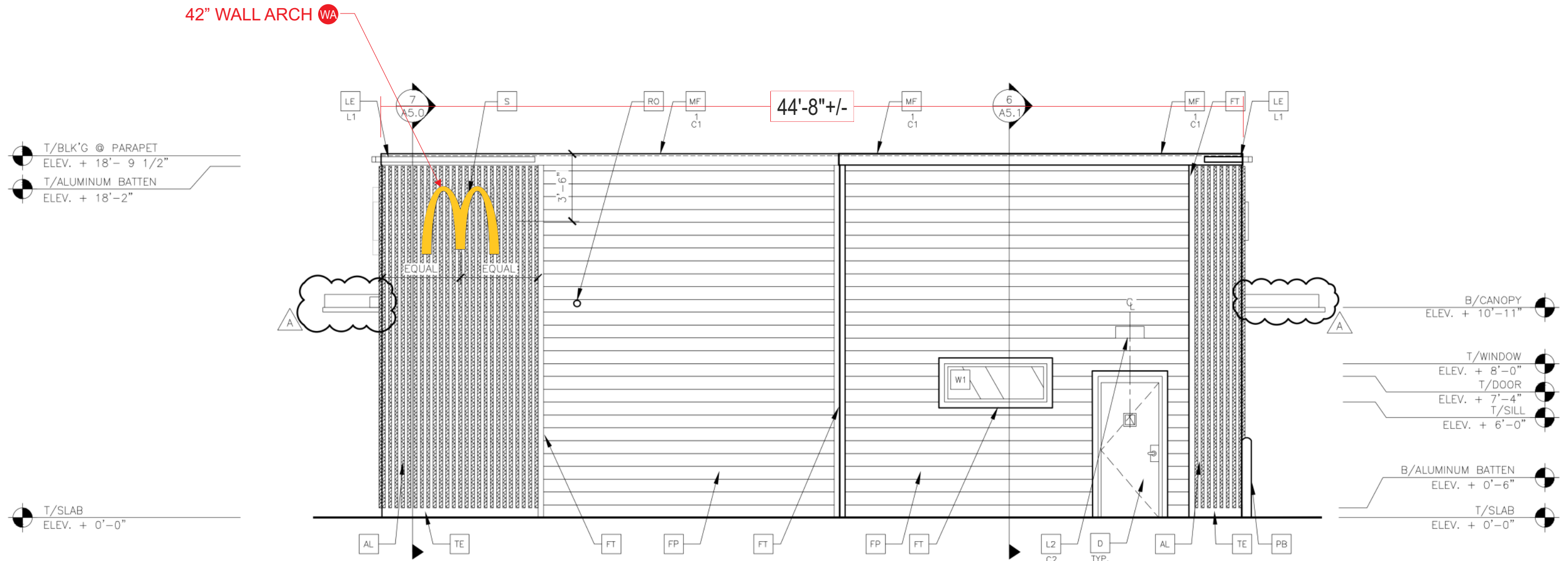
**SOUTH (FRONT) ELEVATION**  
SCALE: 3/16" = 1'-0"

**ALLOWED SQ FT: 64.5**  
**PROPOSED SQ FT: 16.25**



**NORTH (REAR) ELEVATION**  
SCALE: 3/16" = 1'-0"

**ALLOWED SQ FT: 64.5**  
**PROPOSED SQ FT: 14**

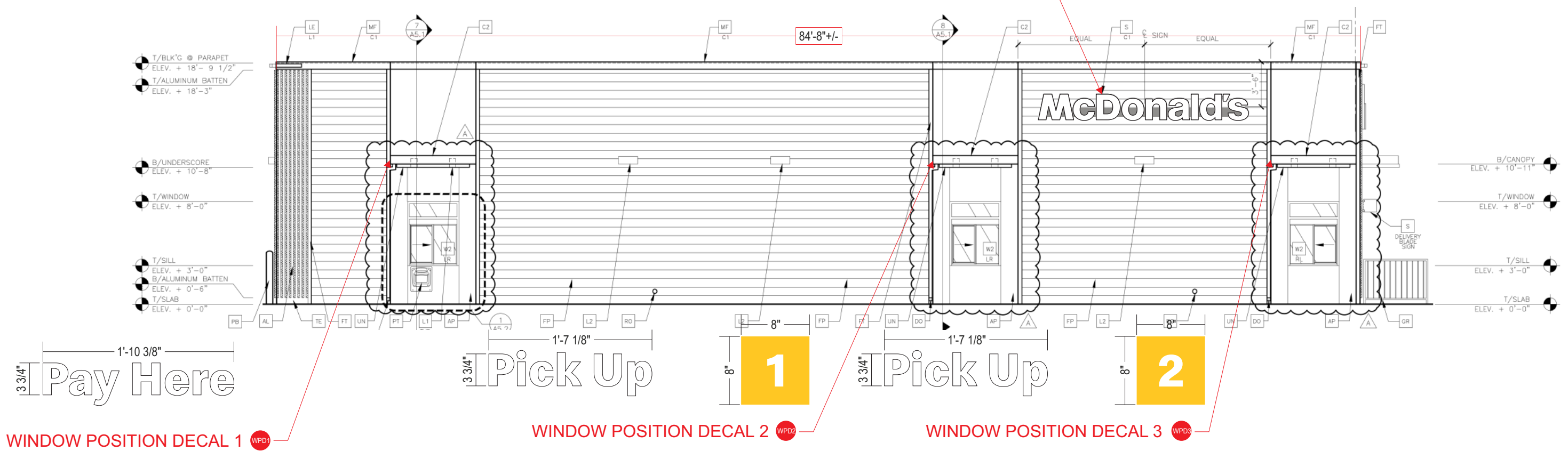




**WEST (DRIVE-THRU) ELEVATION**  
SCALE: 1/8" = 1'-0"

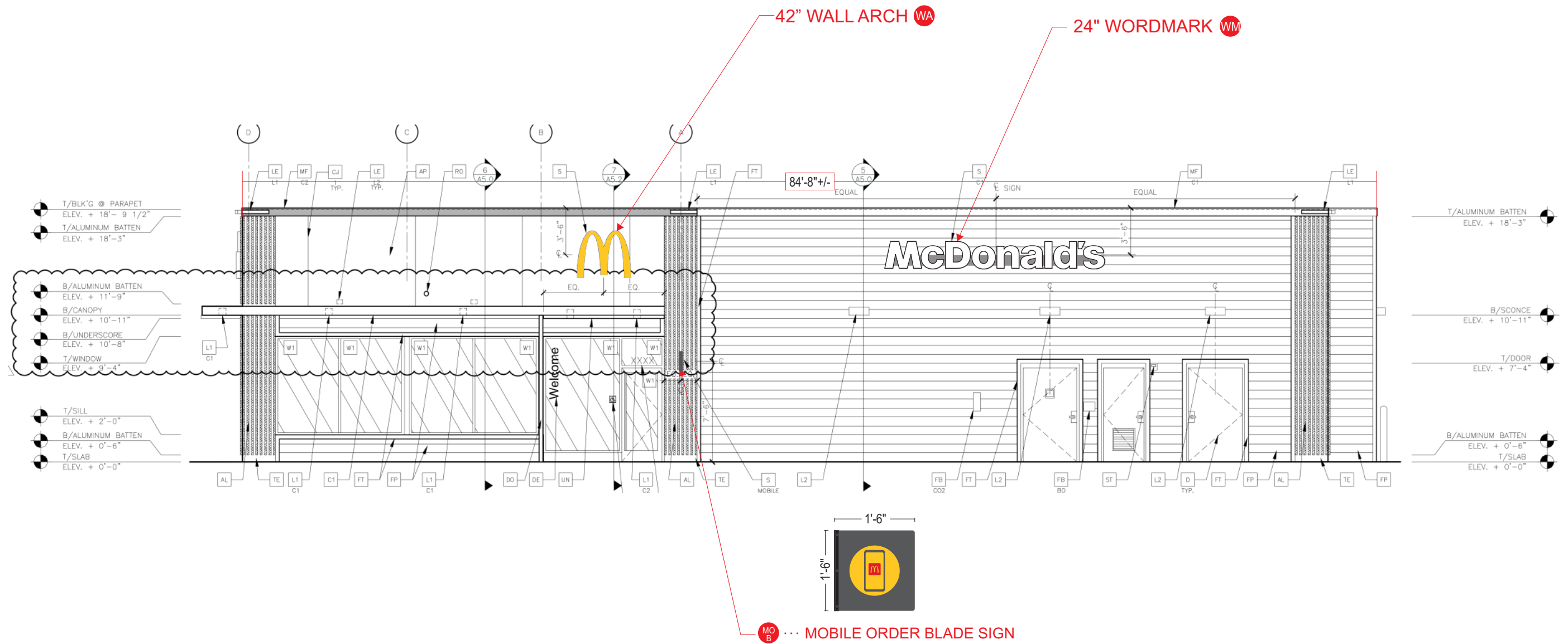
**ALLOWED SQ FT: 82.5**  
**PROPOSED SQ FT: 33.33**

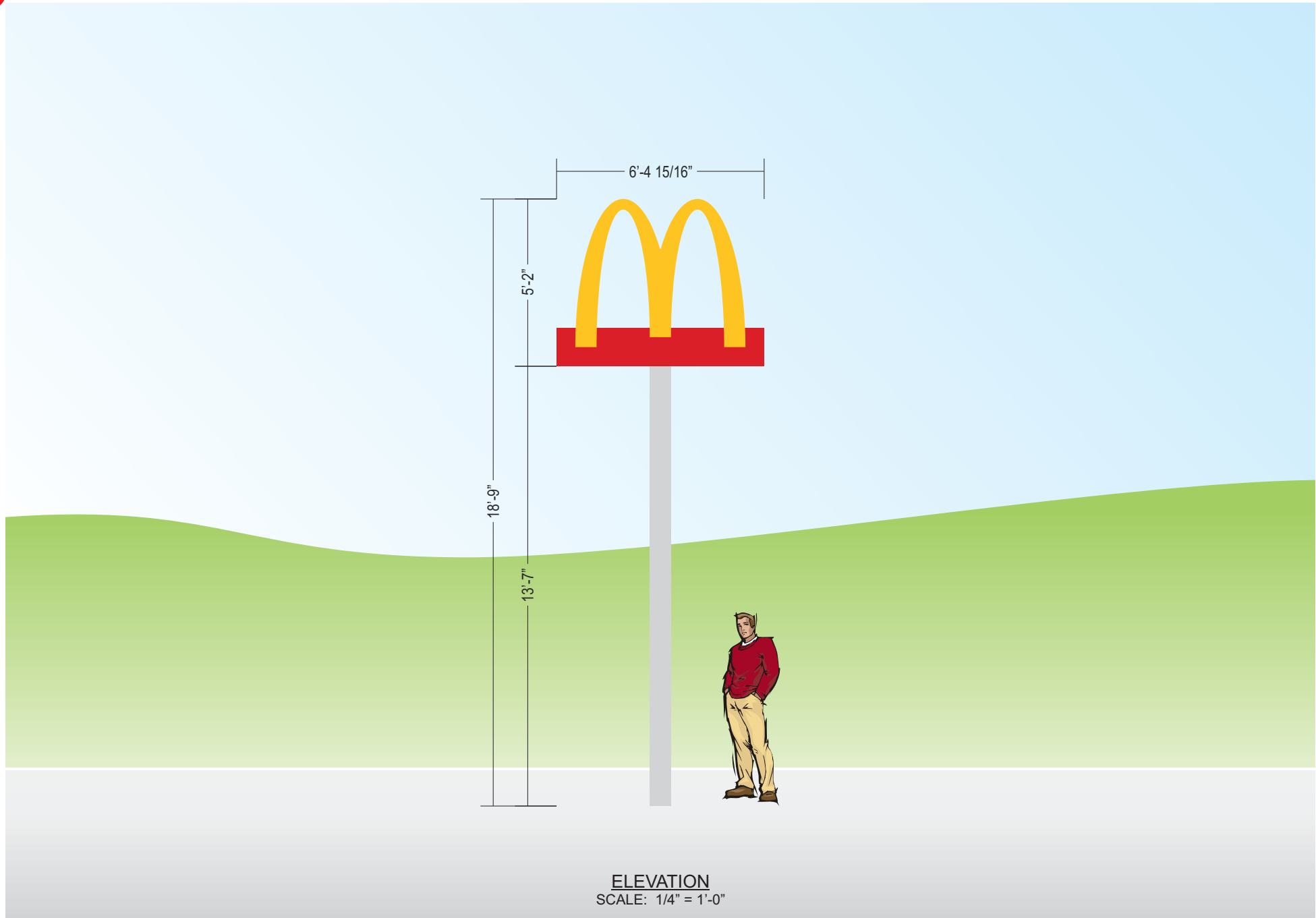
24" WORDMARK **WM**



**EAST (NON DRIVE-THRU) ELEVATION**  
**SCALE: 1/8" = 1'-0"**

**ALLOWED SQ FT: 82.5**  
**PROPOSED SQ FT: 49.65**





ELEVATION  
SCALE: 1/4" = 1'-0"



This sign is intended to be installed in accordance with the requirements of Article 600 of the National Electric Code and/or other applicable local codes. This includes proper grounding and bonding of the sign.

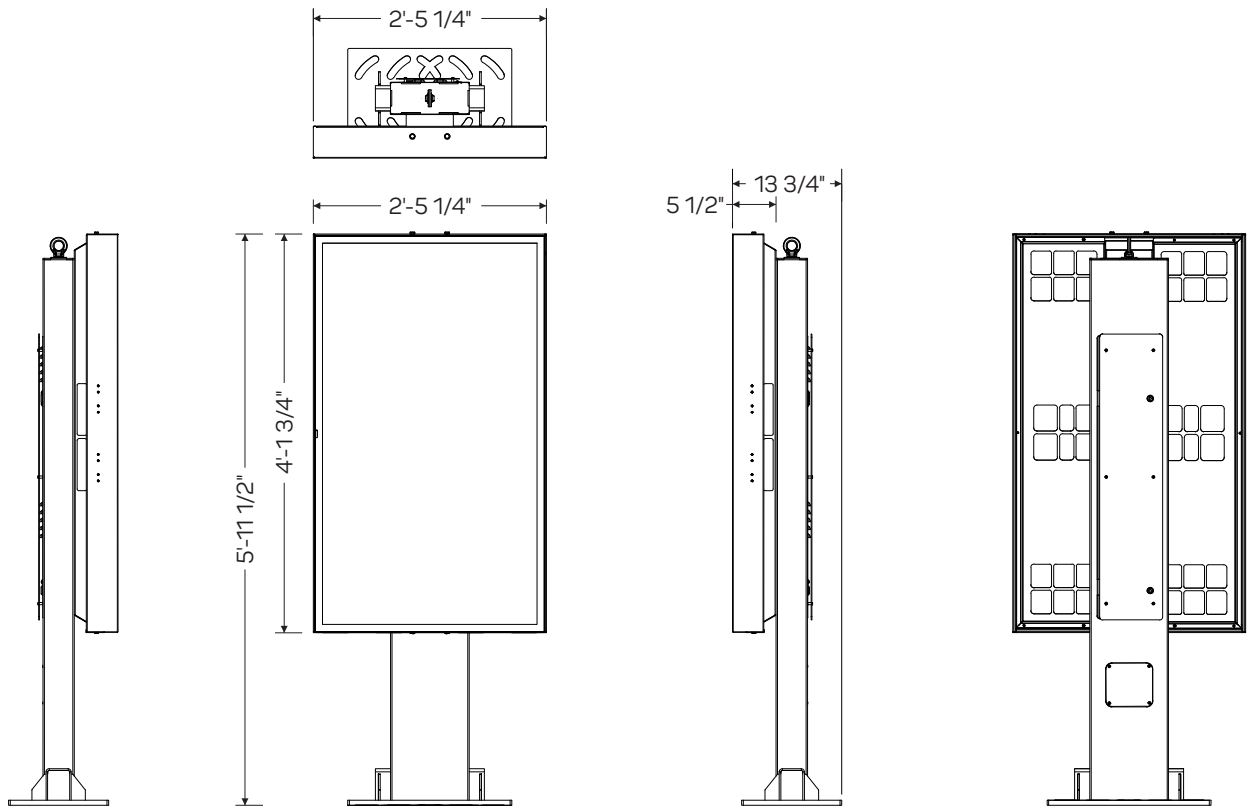
This is an original document created by Persona Signs, LLC provided specifically to the client for the client's personal use. This document should not be shared, reproduced, disclosed or otherwise used without written permission from Persona Signs, LLC.

Customer Approval (Please Initial):

Approval Date:

<b>Frame</b>	<b>Hot dip galvanized + anti-graffiti powder coated steel</b>
<b>Brackets</b>	<b>Hot dip galvanized</b>
<b>Panels</b>	<b>Aluminium + anti-graffiti powdercoat</b>
<b>Access fasteners</b>	<b>Security Torx</b>
<b>Media player access</b>	<b>Dual camlock</b>
<b>Eyebolt</b>	<b>Stainless crane on</b>
<b>Baseplate</b>	<b>McDonalds spec triple mounting pattern option</b>

<b>ODMB 02 SINGLE</b>	
<b>Displays</b>	<b>Samsung OH55F</b>
<b>Hardware</b>	<b>Stratocache Spectra NG</b>
<b>Heating/Cooling</b>	<b>Watlow 100W Heater Sunon 120mm AC Fan</b>
<b>Power Supply Units</b>	<b>60W DC Media Player Power Supply</b>
<b>Power Cables</b>	<b>1 x IEC Power Cable</b>
<b>Electrical Components</b>	<b>Isolated Ground 2 x IG Receptacles 20A Circuit Breaker</b>
<b>Communication Cables</b>	<b>2 x HDMI 1 x RS232</b>
<b>Certification</b>	<b>UL Certified</b>



SCALE: 1/2" = 1'-0"



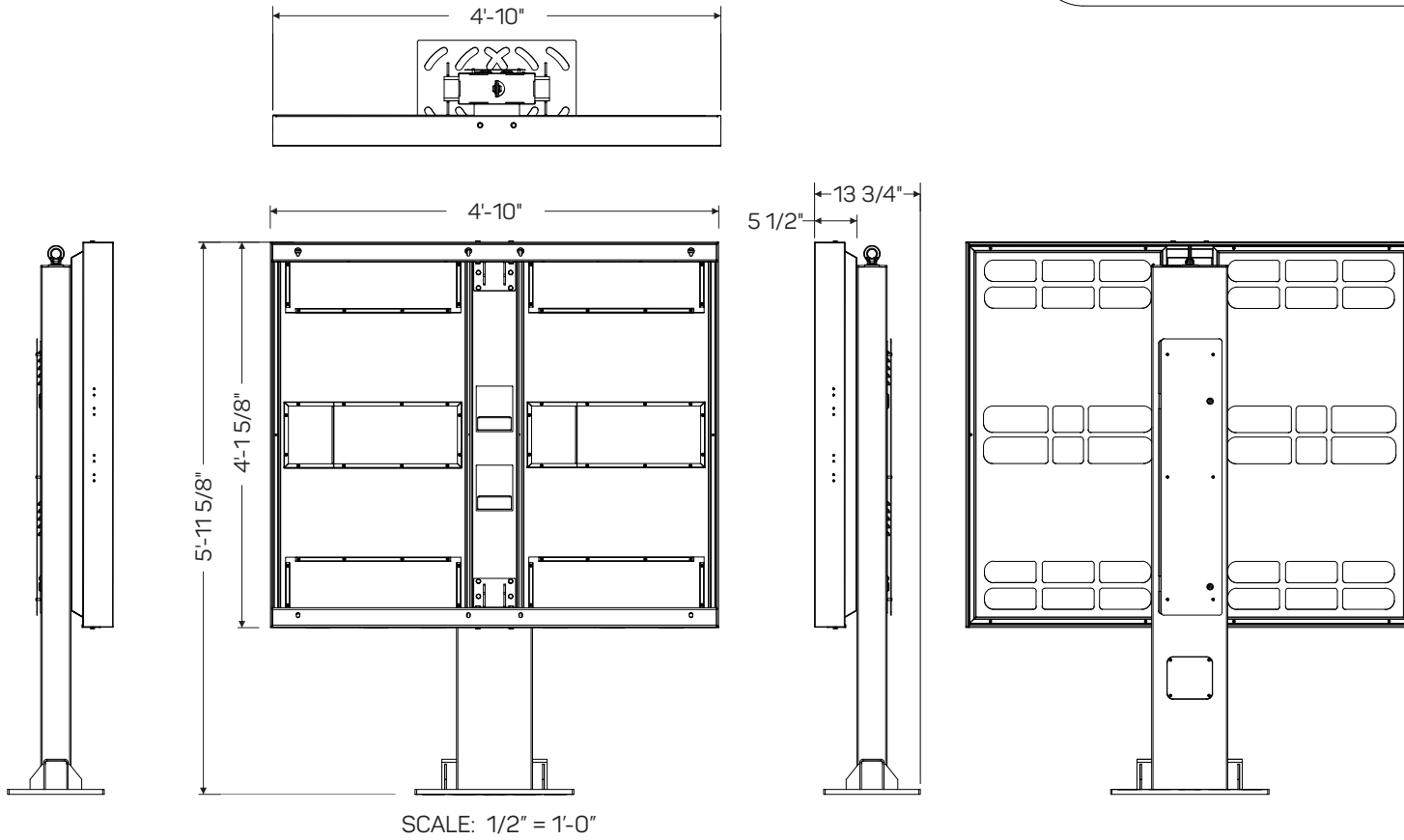
GRAPHIC DETAIL  
NOT TO SCALE



<b>Frame</b>	<b>Hot dip galvanized + anti-graffiti powder coated steel</b>
<b>Brackets</b>	<b>Hot dip galvanized</b>
<b>Panels</b>	<b>Aluminium + anti-graffiti powdercoat</b>
<b>Access fasteners</b>	<b>Security Torx</b>
<b>Media player access</b>	<b>Dual camlock</b>
<b>Eyebolt</b>	<b>Stainless crane on</b>
<b>Baseplate</b>	<b>McDonalds spec triple mounting pattern option</b>

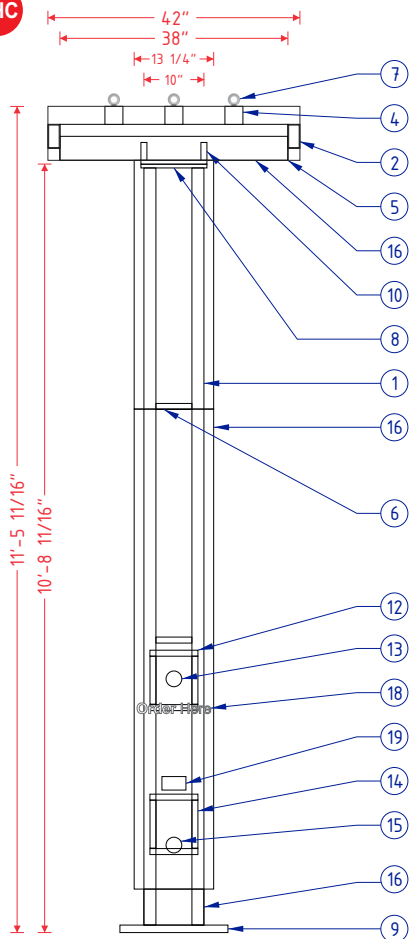
## ODMB 02 DOUBLE

<b>Displays</b>	<b>2 x Samsung OH55F</b>
<b>Hardware</b>	<b>2 x Stratacache Spectra NG</b>
<b>Heating/Cooling</b>	<b>Watlow 100W Heater Sunon 120mm AC Fan</b>
<b>Power Supply Units</b>	<b>2 x 60W DC Media Player Power Supply</b>
<b>Power Cables</b>	<b>2 x IEC Power Cables</b>
<b>Electrical Components</b>	<b>Isolated Ground 2 x IG Receptacles 20A Circuit Breaker</b>
<b>Communication Cables</b>	<b>4 x HDMI 2 x RS232</b>
<b>Certification</b>	<b>UL Certified</b>



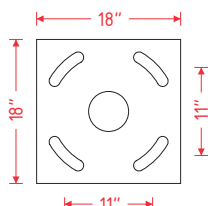
GRAPHIC DETAIL  
NOT TO SCALE

OHC

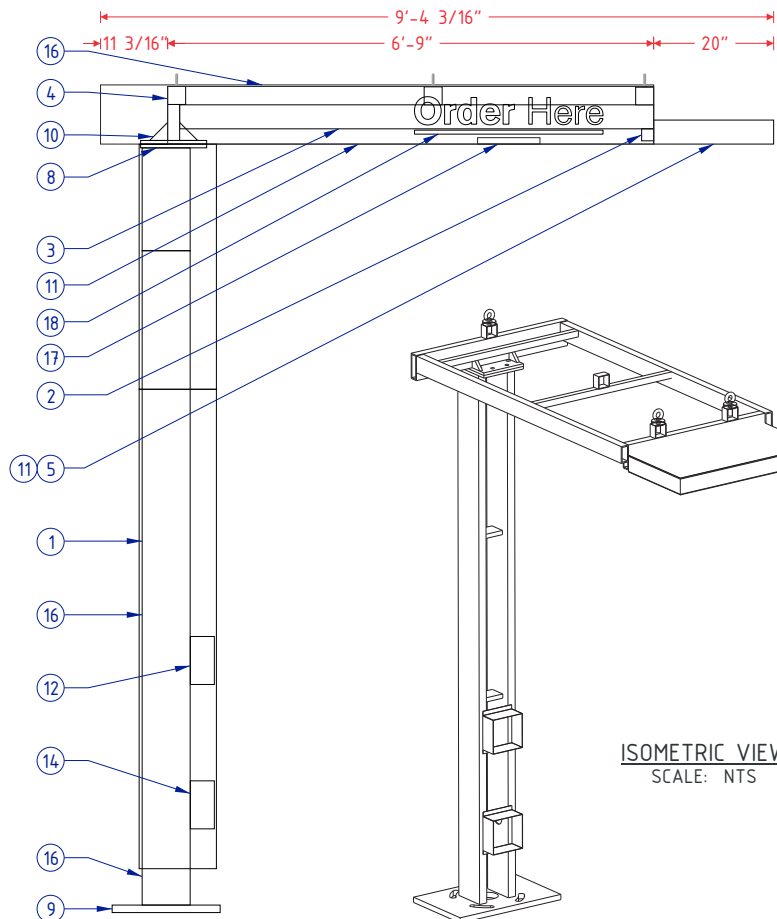


**FRAME & LAMP DETAIL**  
SCALE: 3/8" = 1'-0"

18" X 18" X 1" PLATE  
1 3/8" SLOTTED HOLES  
1" BOLTS

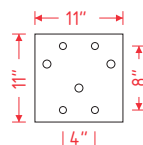


**PLATE DETAIL**  
SCALE: 1/2" = 1'-0"

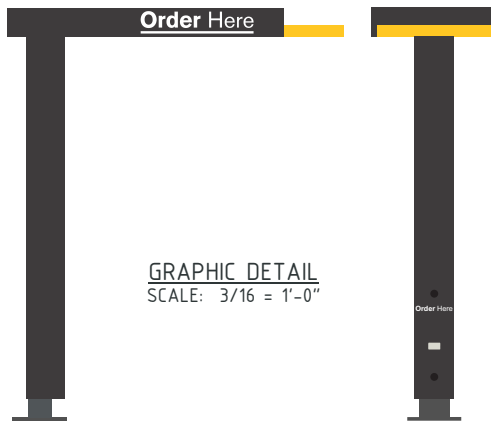
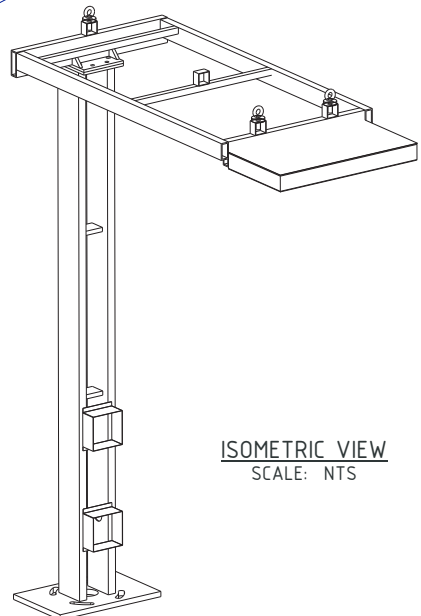


**CROSS SECTION A-A**  
SCALE: 3/8" = 1'-0"

11" X 11" X 5/8" PLATE  
3/4" HOLES  
5/8" BOLTS



**PLATE DETAIL**  
SCALE: 1/2" = 1'-0"



MCDONALD'S SPRINGBOARD OHC SPECIFICATIONS	
NO.	PART/DESCRIPTION
1	2" X 8" X 3/16" RECTANGULAR TUBE
2	2" X 6" X 1/4" RECTANGULAR TUBE
3	2" X 4" X 1/4" RECTANGULAR TUBE
4	3" X 3" X 3/16" SQUARE TUBE
5	1" X 4" C-CHANNEL
6	2" X 8" X 3/16" RECTANGULAR TUBE
7	1/2" EYEBOLTS (3)
8	11" X 11" X 5/8" TOP PLATES (2) (SEE PLATE DETAILS)
9	18" X 28" X 1" BASE PLATE (SEE PLATE DETAILS)
10	3" X 3" X 3/4" GUSSETS
11	.063" ALUMINUM SKIN
12	.063" ALUMINUM BENT SP10 SPEAKER BOX HOLDER
13	SPEAKER OPENING
14	.063" ALUMINUM BENT DM 4/DM 5 MICROPHONE BOX HOLDER
15	MICROPHONE OPENING
16	ACM CLADDING
17	SLOAN LED LIGHT WITH POWER SUPPLY
18	3M 380-10 REFLECTIVE WHITE FILM 1ST SURFACE
19	ADA STICKER

NOTES:

- 2" X 8" X 3/16 RECTANGULAR TUBE FRAME
- ACM AND .063" ALUMINUM SKIN
- EXTERIOR FINISH:  
BASE PLATE - PAINT BM 1631 MIDNIGHT OIL  
TUBE AND TOP ACM - PAINT CHARCOAL  
SPRINGBOARD TIP AND UNDERSIDE - PAINT PMS 123 C GOLD
- ACM/SKIN REMOVABLE FOR SERVICE
- U.L. LISTED
- (1) 20A / 120V CIRCUIT REQUIRED



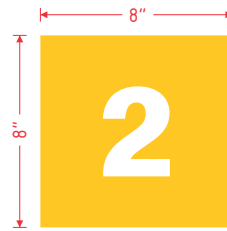
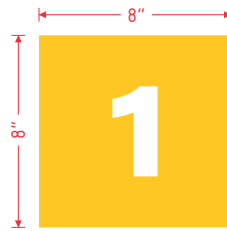
This sign is intended to be installed in accordance with the requirements of Article 600 of the National Electric Code and/or other applicable local codes. This includes proper grounding and bonding of the sign.

This is an original document created by Persona Signs, LLC provided specifically to the client for the client's personal use. This document should not be shared, reproduced, disclosed or otherwise used without written permission from Persona Signs, LLC.

Customer Approval (Please Initial):

Approval Date:

1'-10 3/8"  
 3 3/4"  
**Pay Here**  
 1'-7 1/8"  
 3 3/4"  
**Pick Up**



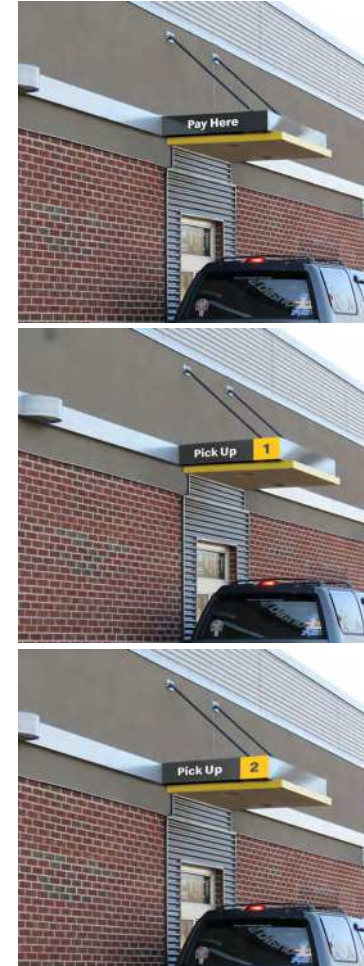
**GRAPHIC DETAILS**  
 SCALE: 1 1/2" = 1'-0"



**TRELLIS POSITIONING DETAIL**  
 SCALE: 1 1/2" = 1'-0"

**SPECIFICATIONS**

- 3M 7725-20 MATTE WHITE OPAQUE FILM
- 3M 7725-25 SUNFLOWER OPAQUE FILM
- FONT = SPEEDEE BOLD



SHOWN APPLIED ON TRELLIS

**persona**  
 SIGNS | LIGHTING | IMAGE

Persona Signs, LLC  
 700 21st Street Southwest  
 PO Box 210  
 Watertown, SD 57201-0210  
 1.800.843.9888 • www.personasigns.com

Customer: <b>MCDONALD'S</b>	Project No.: <b>444961</b>	Request No.: <b>64722</b>
Location: <b>COLORADO SPRINGS, CO</b>	Prepared By: <b>CM/PG</b>	
File Name: <b>444961 - R5 - 6646 MARKSHEFFEL ROAD - COLORADO SPRINGS, CO</b>	Date: <b>9/12/24</b>	Revision: <b>5</b>

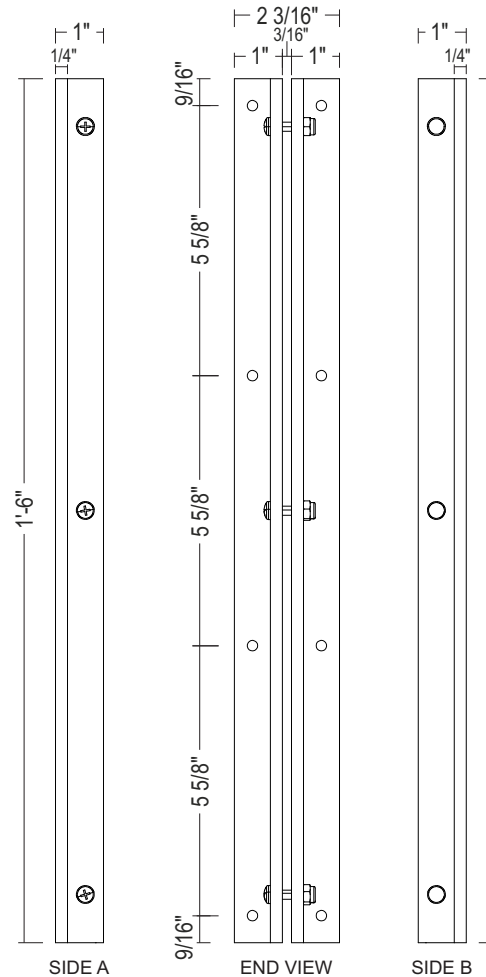
This sign is intended to be installed in accordance with the requirements of Article 600 of the National Electric Code and/or other applicable local codes. This includes proper grounding and bonding of the sign.

This is an original document created by Persona Signs, LLC provided specifically to the client for the client's personal use. This document should not be shared, reproduced, disclosed or otherwise used without written permission from Persona Signs, LLC.

Customer Approval (Please Initial):
Approval Date:



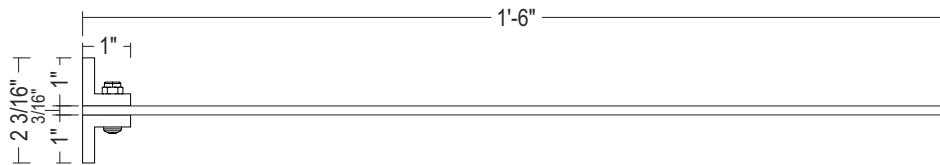
GRAPHIC DETAIL  
SCALE: 3" = 1'-0"



MOUNTING BRACKET DETAIL  
SCALE: 3" = 1'-0"

SPECIFICATIONS:

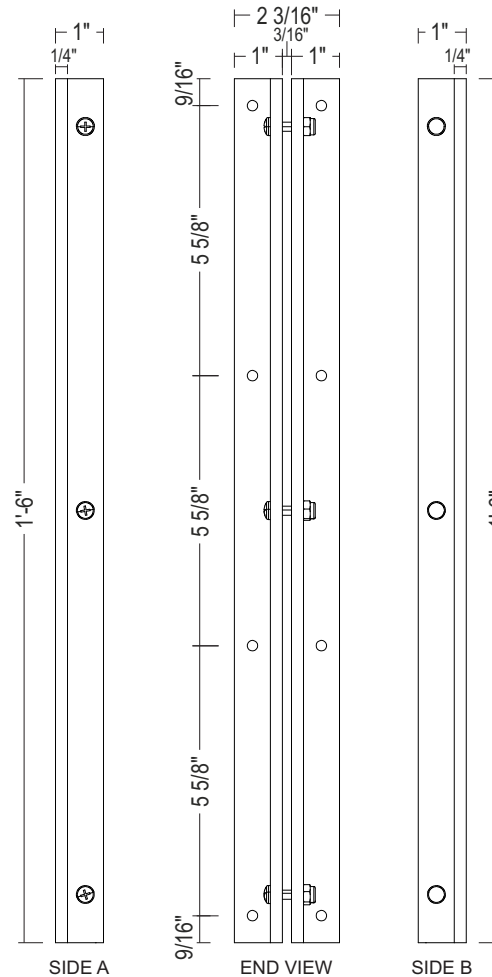
- MOUNTING BRACKET:  
(2) 1" X 1" X 1/4" X 18" ALUMINUM ANGLES;  
POWDER COATED BLACK
- FACE ATTACHMENT: 10-24 X .75" THREAD-  
CUTTING SCREWS WITH NYLOCK NUTS,  
POWDER COATED BLACK
- .187" ALUMINUM FACE, POWDER COATED TO  
MATCH NG CHARCOAL
- DECORATION (BOTH SIDES):  
3M 3630-33 RED FILM  
3M 7725-25 YELLOW FILM
- BOXED SIGN AREA: 2.25 SQ FT



PLAN VIEW  
SCALE: 3" = 1'-0"



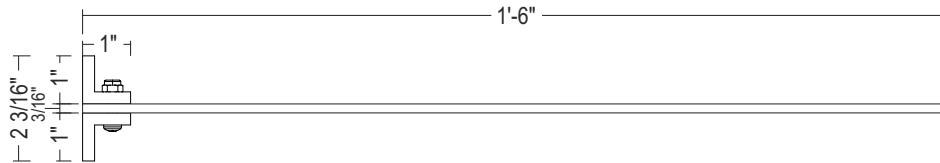
GRAPHIC DETAIL  
SCALE: 3" = 1'-0"



MOUNTING BRACKET DETAIL  
SCALE: 3" = 1'-0"

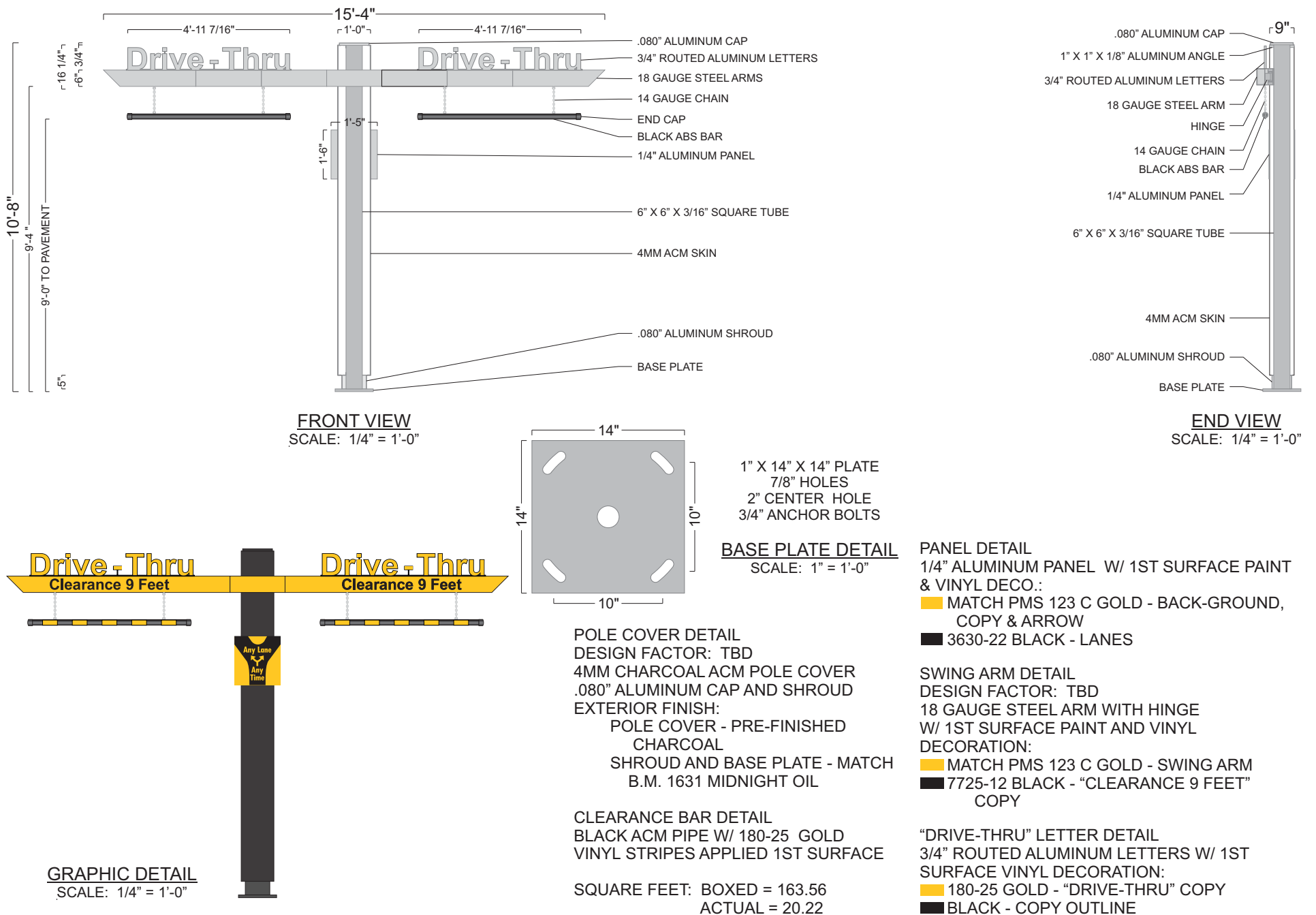
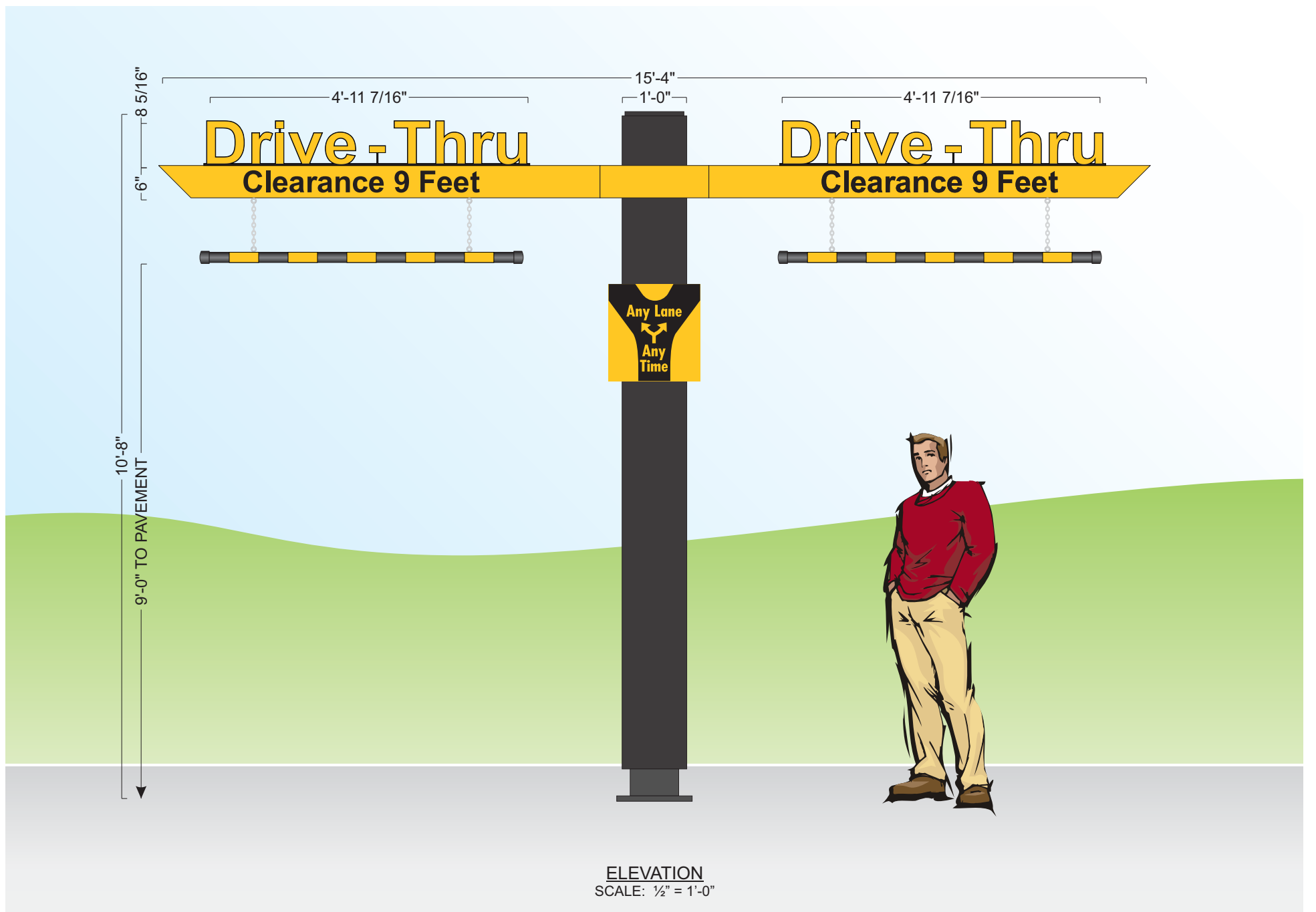
SPECIFICATIONS:

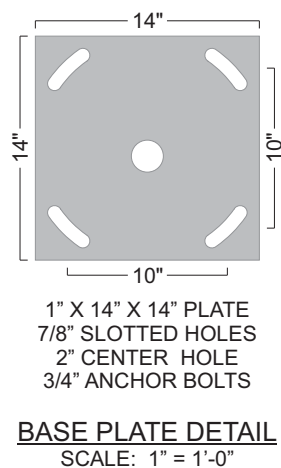
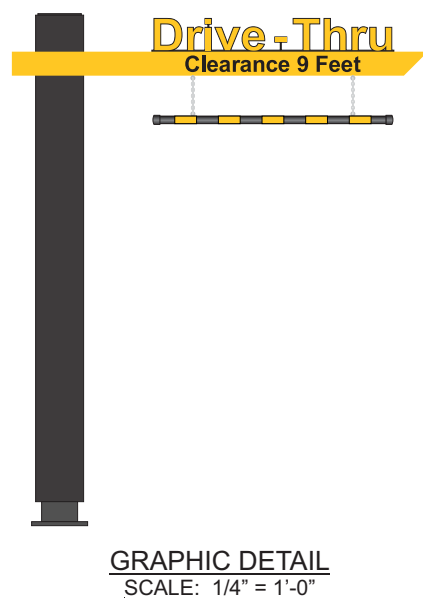
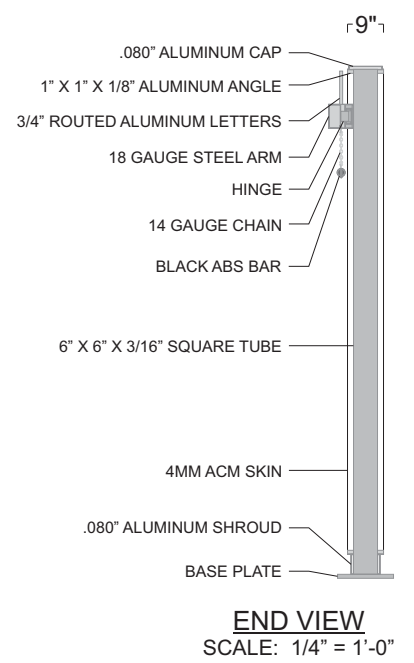
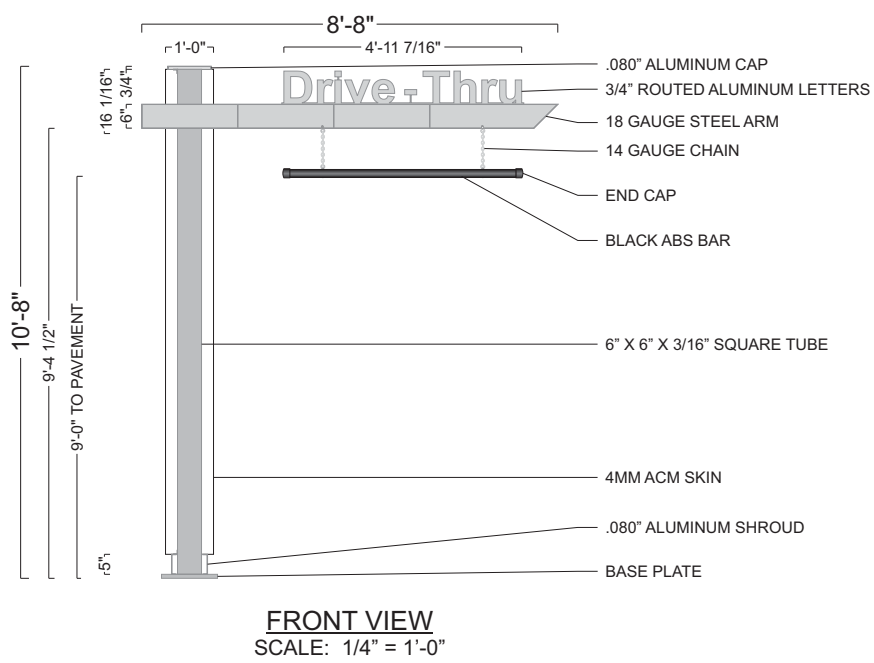
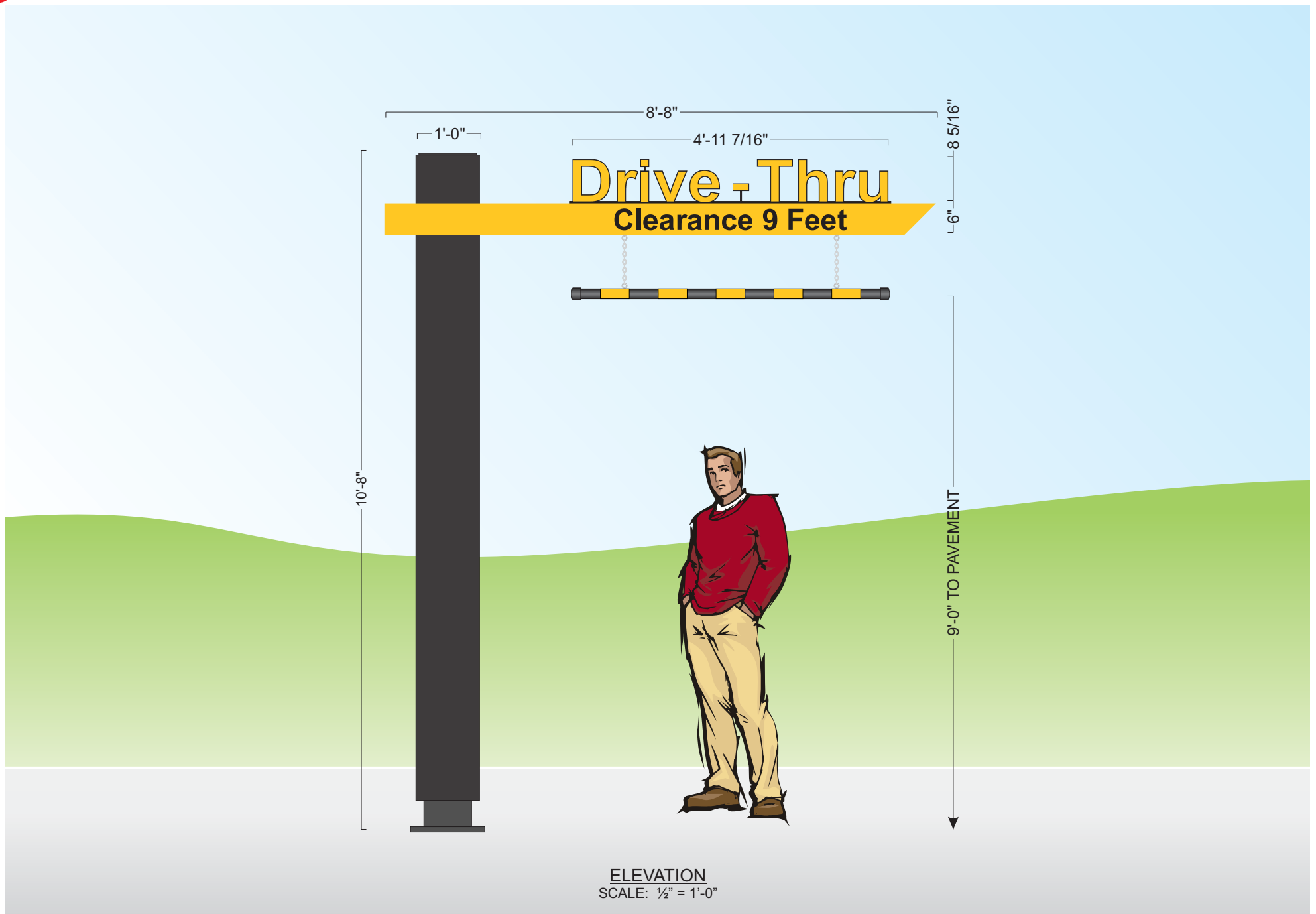
- MOUNTING BRACKET:  
(2) 1" X 1" X 1/4" X 18" ALUMINUM ANGLES;  
POWDER COATED BLACK
- FACE ATTACHMENT: 10-24 X .75" THREAD-  
CUTTING SCREWS WITH NYLOCK NUTS,  
POWDER COATED BLACK
- .187" ALUMINUM FACE, POWDER COATED TO  
MATCH NG CHARCOAL
- DECORATION (BOTH SIDES):  
3M 3630-33 RED FILM  
3M 7725-25 YELLOW FILM  
3M 7725-20 WHITE FILM
- BOXED SIGN AREA: 2.25 SQ FT



PLAN VIEW  
SCALE: 3" = 1'-0"







**POLE COVER DETAIL**  
DESIGN FACTOR: TBD  
4MM CHARCOAL ACM POLE COVER  
.080" ALUMINUM CAP AND SHROUD  
EXTERIOR FINISH:  
POLE COVER - PRE-FINISHED CHARCOAL  
SHROUD AND BASE PLATE - MATCH B.M. 1631 MIDNIGHT OIL

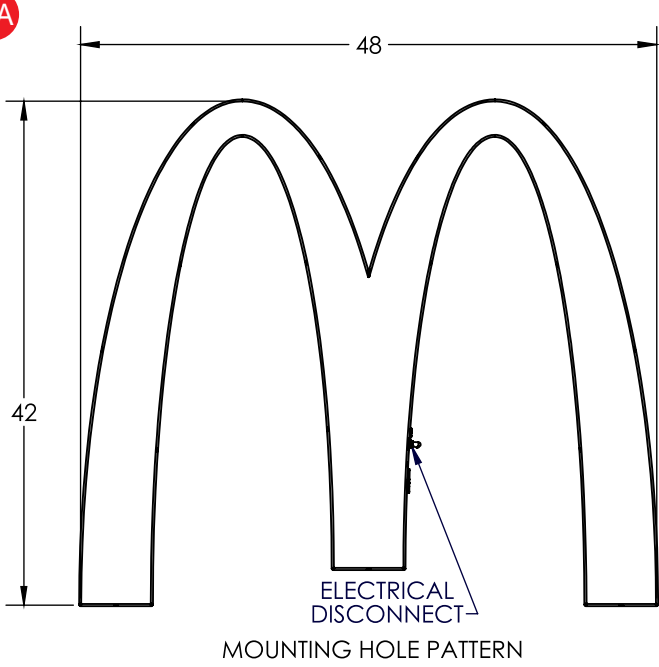
**CLEARANCE BAR DETAIL**  
BLACK ACM PIPE W/ 180-25 GOLD VINYL STRIPES APPLIED TO 1ST SURFACE

**SQUARE FEET:** BOXED = 92.44  
ACTUAL = 15.68

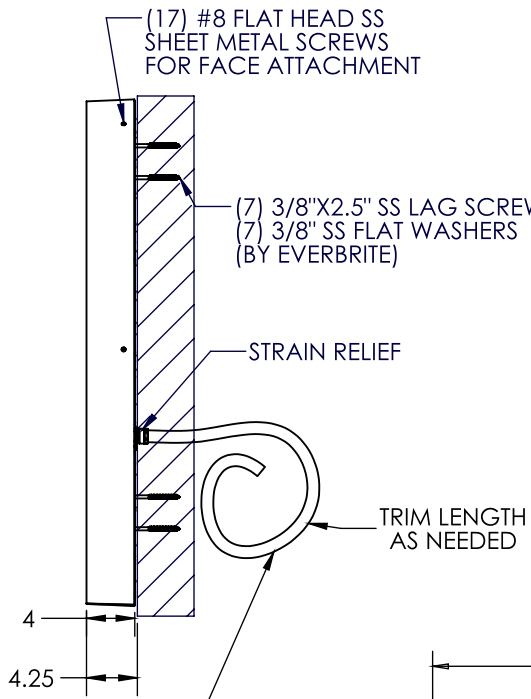
**SWING ARM DETAIL**  
DESIGN FACTOR: TBD  
18 GAUGE STEEL ARM WITH HINGE W/ 1ST SURFACE PAINT AND VINYL DECORATION:  
■ MATCH PMS 123 C YELLOW - SWING ARM  
■ 7725-12 BLACK - "CLEARANCE 9 FEET" COPY

**"DRIVE-THRU" LETTER DETAIL**  
3/4" ROUTED ALUMINUM LETTERS W/ 1ST SURFACE VINYL DECORATION:  
■ 180-25 GOLD - "DRIVE-THRU" COPY  
■ BLACK - COPY OUTLINE

WA



MOUNTING HOLE PATTERN



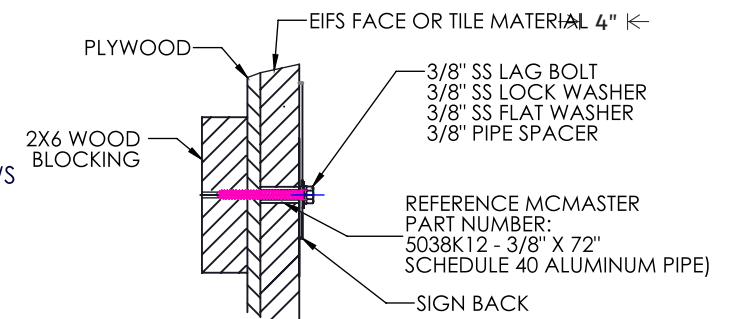
INPUT: 120 VAC, 60Hz, 0.8 AMPS MAX

OUTPUT: 12VDC, VOLTAGE REGULATED, 20.5 WATT, APPROX 1.7 AMP.  
OPERATING ENVIRONMENT: WET, DAMP, DAY -35 DEG C TO +70 DEG C

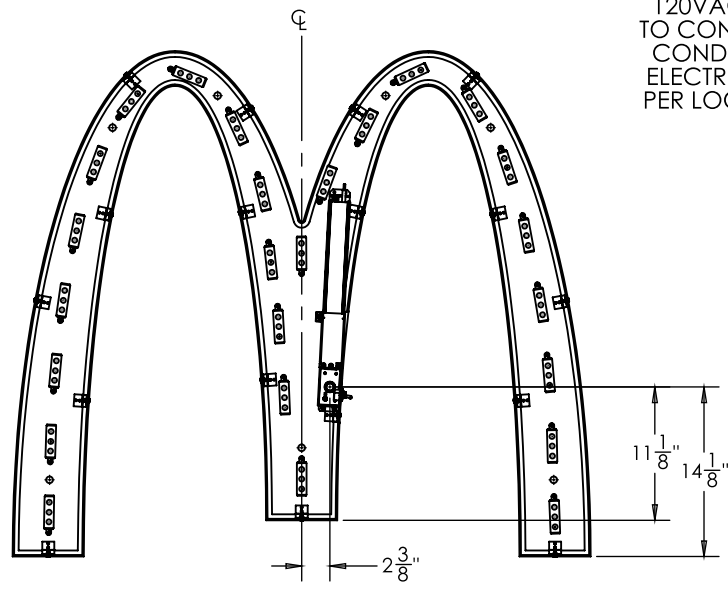
WIRING: SIGN IS TO BE INSTALLED IN ACCORDANCE WITH THE REQUIREMENTS OF ARTICLE 600 OF THE NATIONAL ELECTRICAL CODE AND ALL OTHER APPLICABLE LOCAL CODES. THIS INCLUDES THE PROPER GROUNDING OF THE SIGN.

SQUARE FOOT AREA: ACTUAL: 5 SQ FT. BOXED: 14SQ FT.

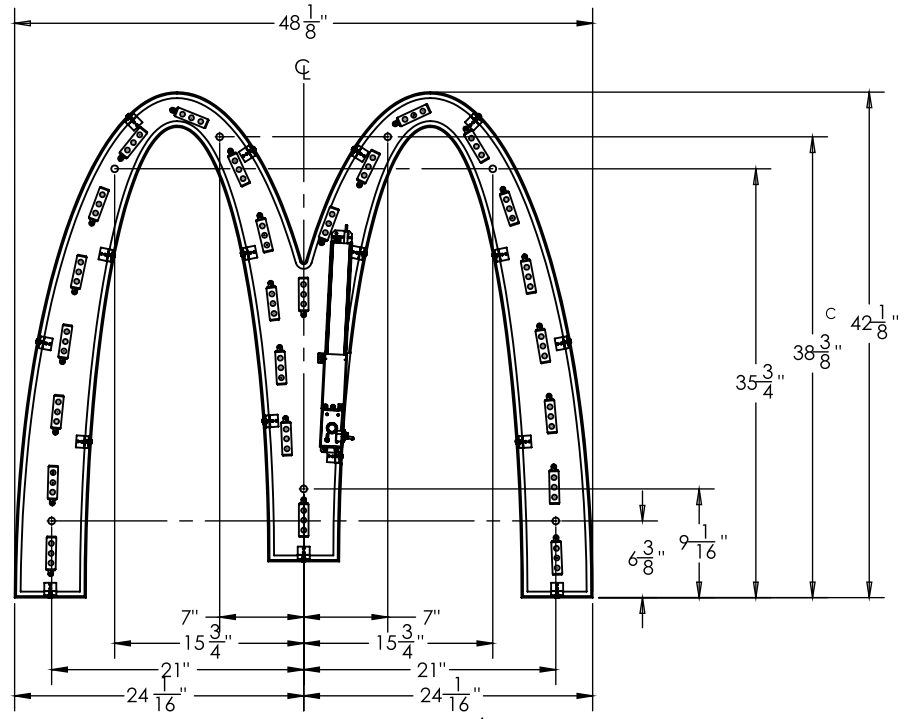
DESIGNED WINDLOAD: 150 MPH WIND SPEED 3-SECOND GUST EXPOSURE. COMPLIANT



UL LISTED CONDUIT AND 120VAC PRIMARY POWER TO CONNECT TO PROVIDED CONDUIT AND WIRING BY ELECTRICAL CONTRACTOR PER LOCAL AND NATIONAL CODES

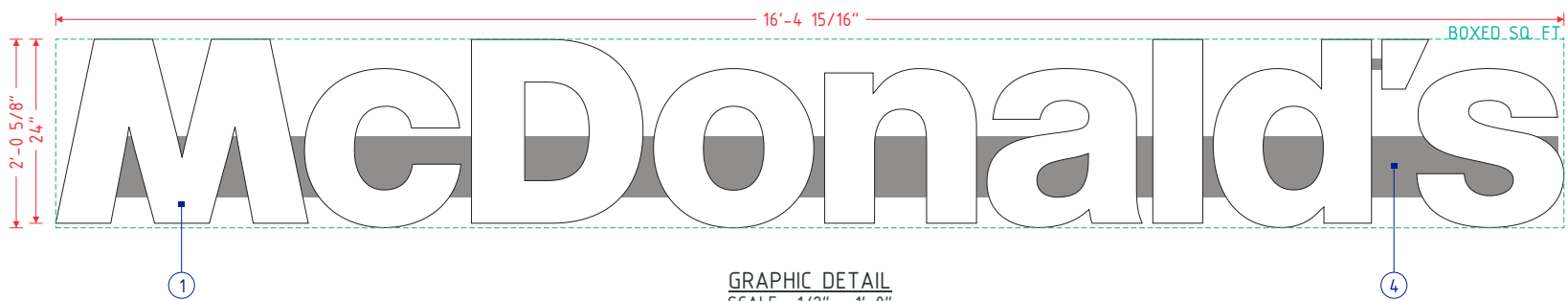


ELECTRICAL INPUT LOCATION  $\Delta$

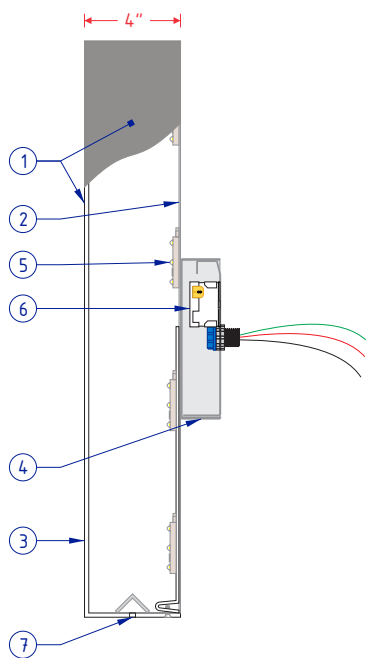


MOUNTING HOLE LOCATIONS  $\Delta$

WM



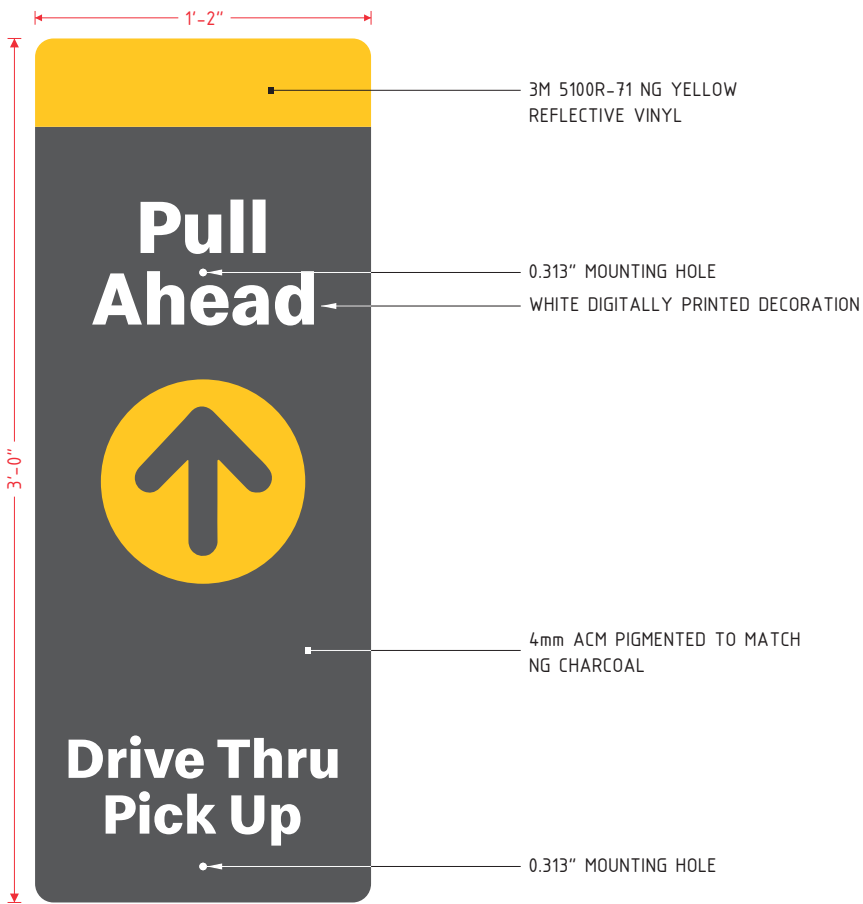
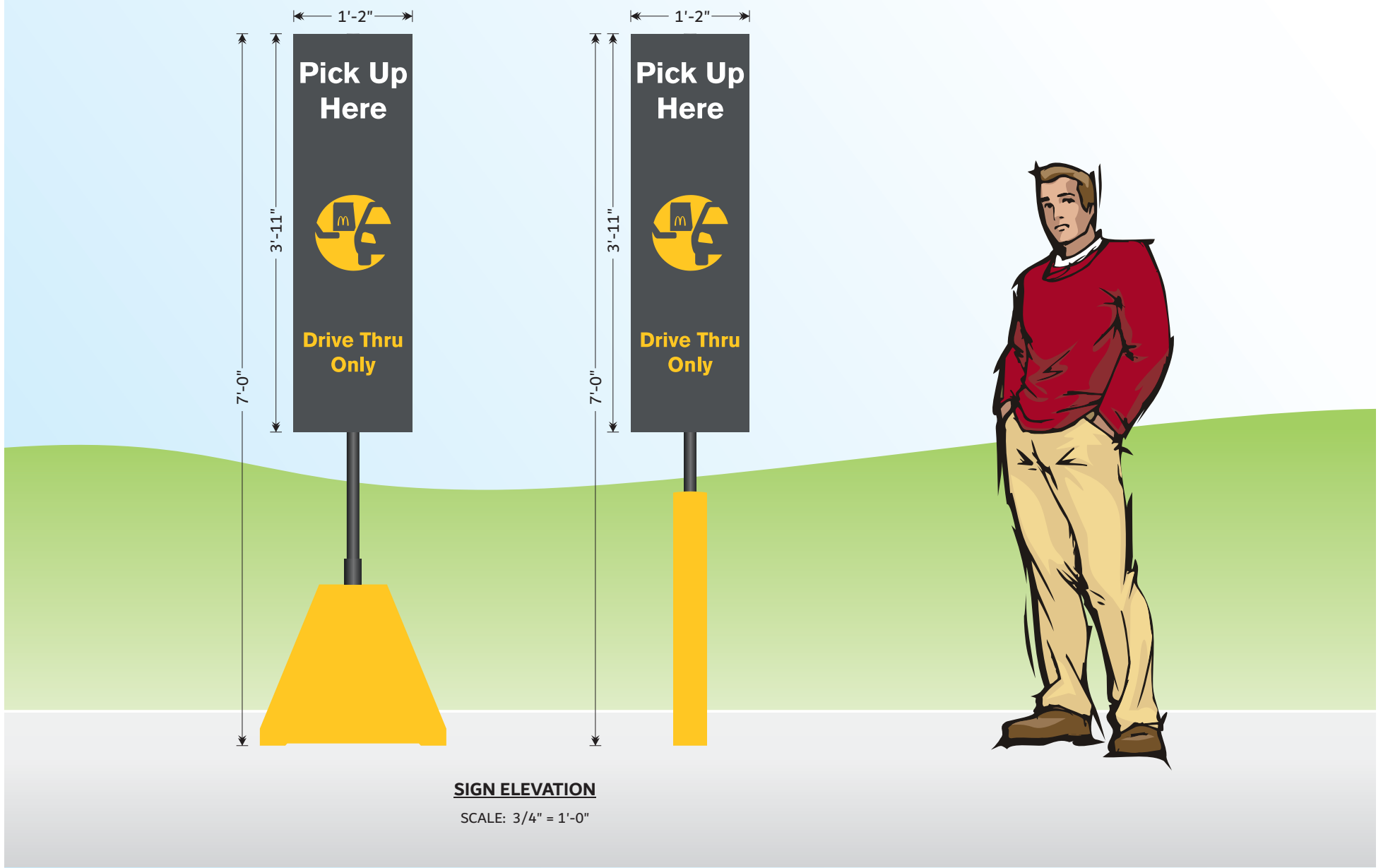
GRAPHIC DETAIL  
SCALE: 1/2" = 1'-0"



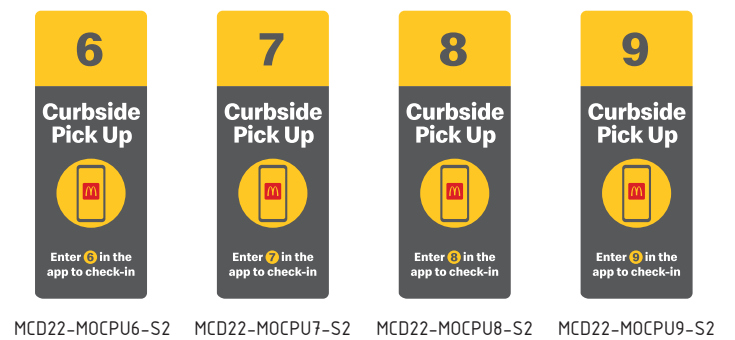
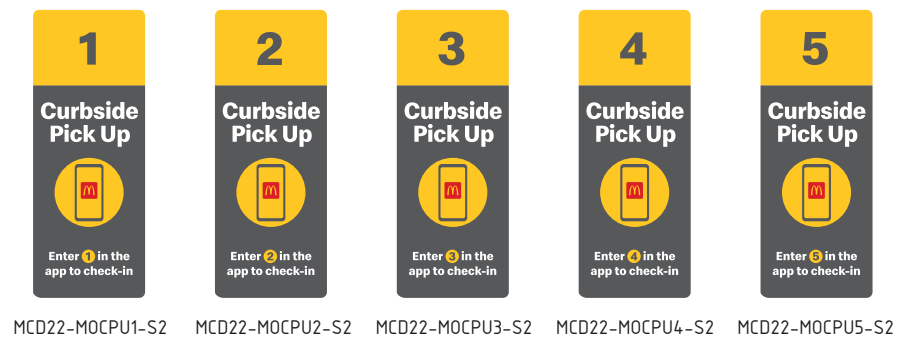
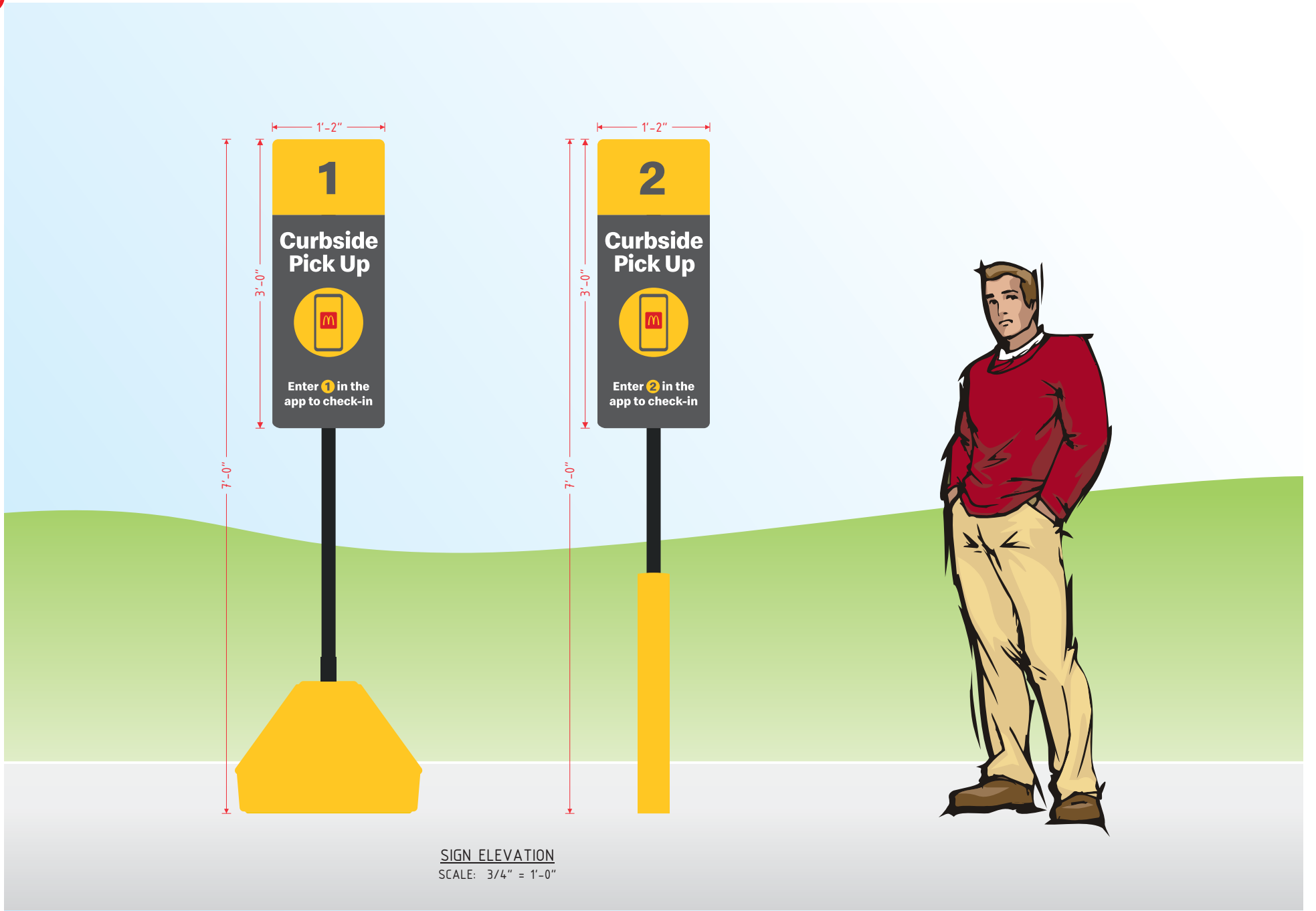
CHANNEL LETTER DETAIL  
SCALE: 1 1/2" = 1'-0"

SPECIFICATIONS	
NO.	PART/DESCRIPTION
1	.177" MOLDED WHITE MODIFIED ACRYLIC FACES/LETTER BODIES WITH SIDES PAINTED MCDONALD'S SILVER (OPAQUE) ON EXTERIOR
2	.040" ALUMINUM BACKS
3	.118" WHITE ABS INSERTS
4	ALUMINUM RACEWAY PAINTED MCDONALD'S SILVER
5	GE 5000K WHITE LED'S AS REQUIRED
6	LED POWER SUPPLY LOCATED INSIDE RACEWAY
7	DRAIN HOLES WITH BAFFLES AS REQUIRED

- NOTES:
- LETTER INTERIORS TO BE WHITE
  - U.L. LISTED



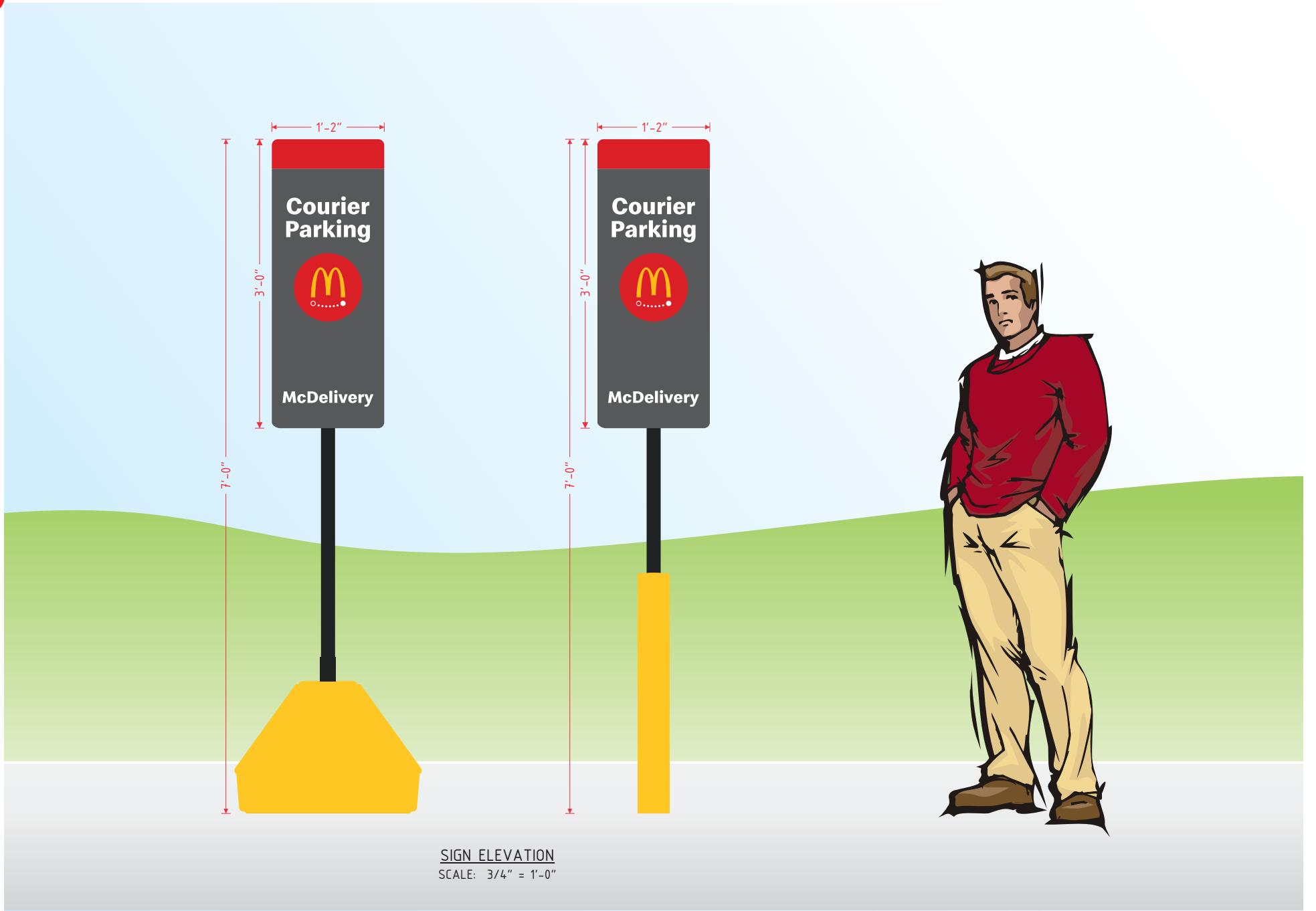
**DRIVE THRU RESERVED SIGN DETAIL**  
DESIGN FACTOR: TBD  
4mm ACM PIGMENTED TO MATCH NG CHARCOAL  
WHITE DIGITALLY PRINTED GRAPHICS  
REFLECTIVE YELLOW VINYL NUMBER BACKGROUND  
3.50 SQUARE FEET



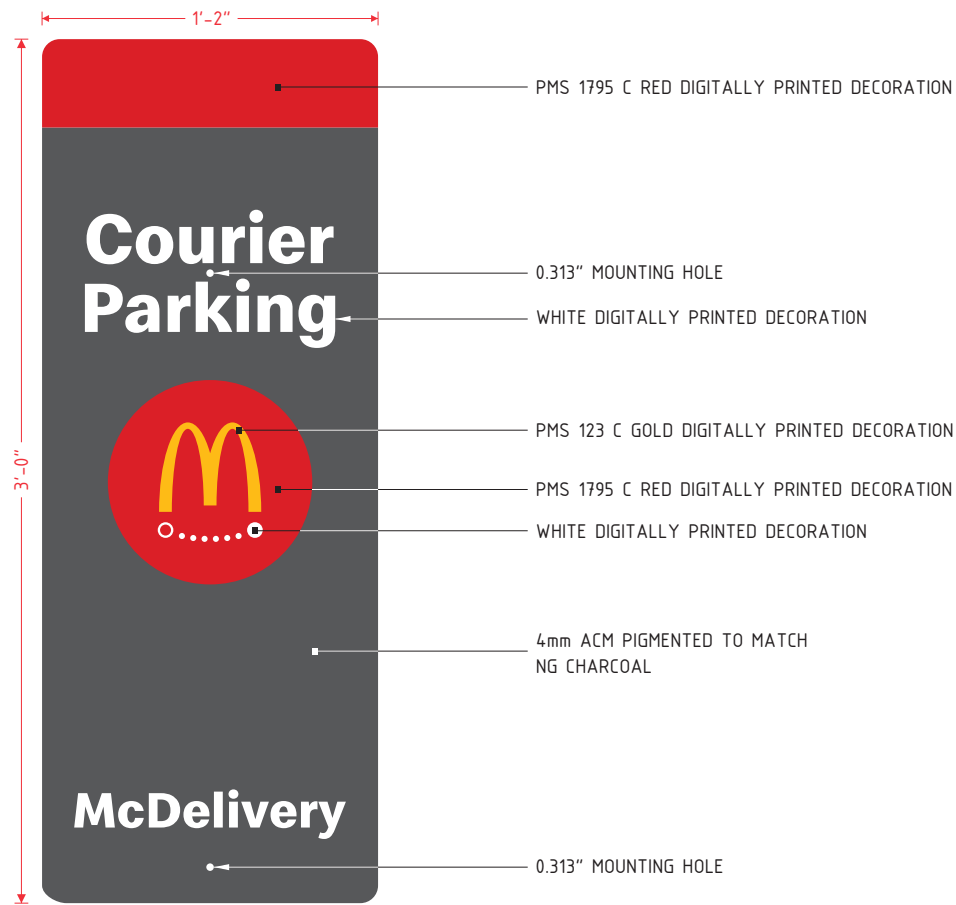
**AVAILABLE FACES**  
SCALE: 1/2" = 1'-0"

MOBILE ORDER CURBSIDE PICKUP SIGN DETAIL  
DESIGN FACTOR: TBD  
4mm ACM PIGMENTED TO MATCH NG CHARCOAL  
WHITE, YELLOW, & RED DIGITALLY PRINTED GRAPHICS  
REFLECTIVE YELLOW VINYL NUMBER BACKGROUND  
3.50 SQUARE FEET





**SIGN ELEVATION**  
SCALE: 3/4" = 1'-0"

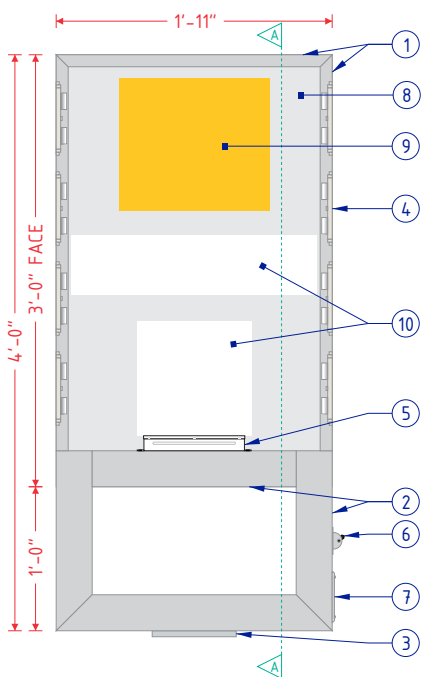


**GRAPHIC DETAIL**  
SCALE: 1 1/2" = 1'-0"

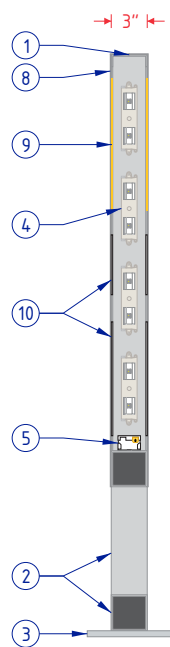
**COURIER PARKING SIGN DETAIL**  
DESIGN FACTOR: TBD  
4mm ACM PIGMENTED TO MATCH NG CHARCOAL  
WHITE, YELLOW, & RED DIGITALLY PRINTED GRAPHICS  
REFLECTIVE YELLOW VINYL NUMBER BACKGROUND  
3.50 SQUARE FEET



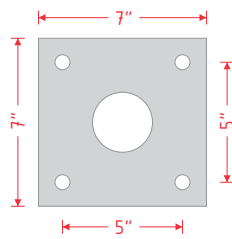
DIRECTIONAL ELEVATION  
SCALE: 1" = 1'-0"



FRAME & LAMP DETAIL  
SCALE: 3/4" = 1'-0"



CROSS SECTION A-A  
SCALE: 3/4" = 1'-0"



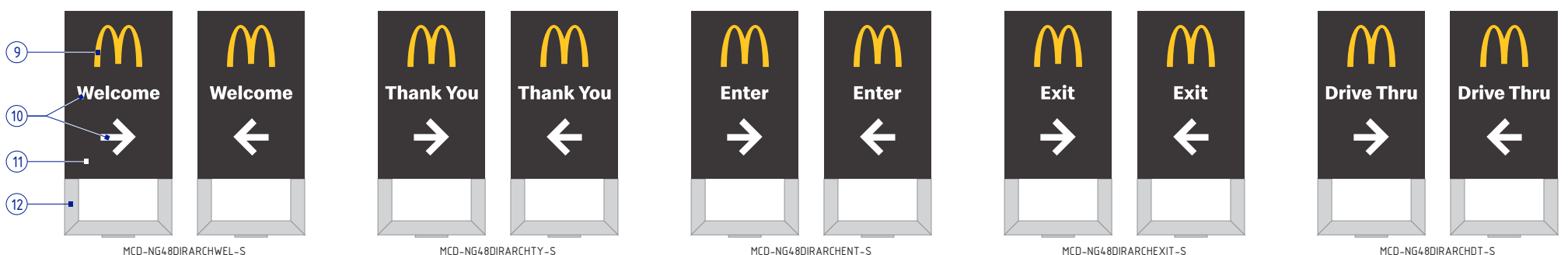
1/2" X 7" X 7" ALUMINUM PLATE  
5/8" BOLT HOLES  
2 1/2" CENTER HOLE

PLATE DETAIL  
SCALE: 1 1/2" = 1'-0"

MCDONALD'S 48" NEXT GEN DIRECTIONAL SPECIFICATIONS	
NO.	PART/DESCRIPTION
1	3" X 1" X 1/8" ALUMINUM C-CHANNEL
2	3" X 3" X 1/8" ALUMINUM TUBE
3	MOUNTING PLATE (SEE PLATE DETAIL)
4	WHITE LED'S AS REQUIRED
5	LED POWER SUPPLIES AS REQUIRED
6	DISCONNECT SWITCH
7	ELECTRICAL CONNECTION ACCESS THROUGH COVER
8	.080" ROUTED ALUMINUM SHOTBOX FACES
9	.118" NG YELLOW SOLAR GRADE POLYCARBONATE BACKER PANEL
10	.118" NG WHITE SOLAR GRADE POLYCARBONATE BACKER PANEL
11	POWDERCOAT HENTZEN #P90353APC (OR PAINT TO MATCH)
12	PAINT TO MATCH SILVER OR METALLIC GRAY

NOTES:

- DESIGN FACTOR: TO BE DETERMINED
- 3" X 1/8" ALUMINUM C-CHANNEL FRAME
- ROUTED ALUMINUM SHOTBOX FACES
- EXTERIOR FINISH:
  - FACES - POWDERCOAT HENTZEN #P90353APC (OR PAINT TO MATCH)
  - TUBES AND PLATE - PAINT SILVER OR METALLIC GRAY
- INTERIOR FINISH: PAINT REFLECTIVE WHITE
- FACES REMOVABLE FOR SERVICE ACCESS
- U.L. LISTED
- ELECTRICAL: 1.10 AMPS/120 VOLTS
- SQUARE FOOTAGE:
  - FACE = 5.75
  - DISPLAY = 7.67



GRAPHIC DETAIL  
SCALE: 3/8" = 1'-0"