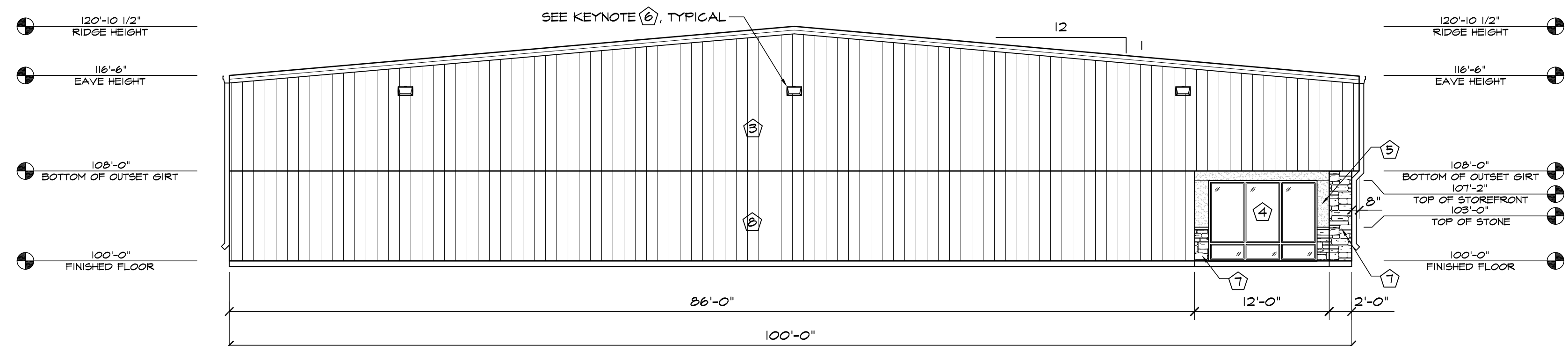
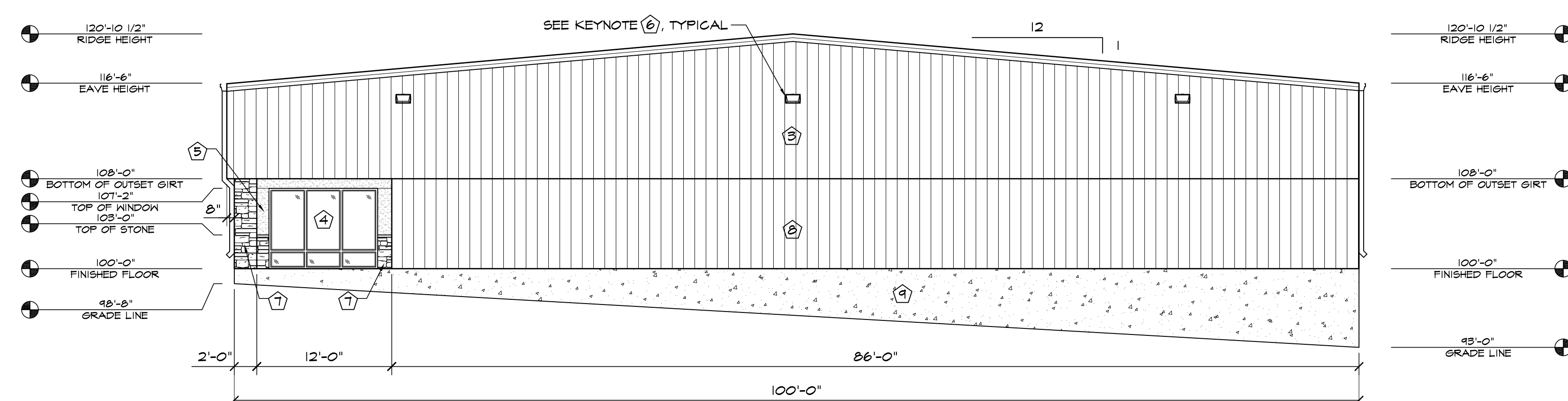


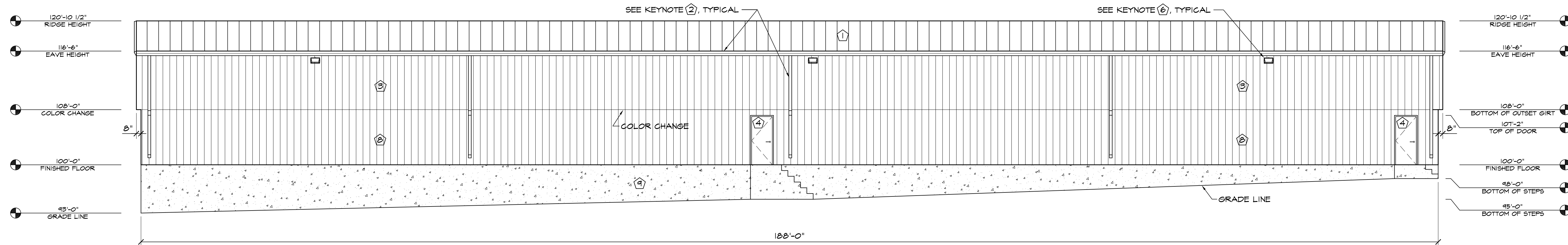
1 NORTH ELEVATION
SCALE: 1/8"=1'-0"



2 EAST ELEVATION
SCALE: 1/8"=1'-0"



3 WEST ELEVATION
SCALE: 1/8"=1'-0"



4 SOUTH ELEVATION
SCALE: 1/8"=1'-0"

ELEVATION KEY NOTES	
1	PREFINISHED 24 GA. "PBR" METAL ROOF PANELS BY METAL BUILDING PROVIDER - COLOR: TBD
2	PREFINISHED GUTTER & DOWNSPOUTS BY METAL BUILDING PROVIDER
3	PREFINISHED 26 GA. "PBR" METAL WALL PANELS BY METAL BUILDING PROVIDER - COLOR: TBD
4	SEE SCHEDULES ON "A" SHEETS FOR ALL DOOR AND WINDOW INFORMATION
5	3/4" STUCCO FINISH SYS. W/ EXPANSION JOINT-120 SF MAX AREA
6	WALL PACK LIGHT TOP OF LIGHT @ 15'-6" A.F.F. SEE ELECT. PLANS
7	STONE VENEER WITH 2" CAP INSTALLED W/ SCHLUTER TRIM
8	PREFINISHED 26 GA. "PBR" METAL WALL PANELS BY METAL BUILDING PROVIDER - COLOR: TBD
9	EXPOSED CONCRETE WALL

HAMMERS CONSTRUCTION INC.
 COMMERCIAL GENERAL CONTRACTORS SPECIALIZING IN DESIGN/BUILD
 PRESIDENT: STEVE R. HAMMERS
 VICE PRES: DAVID J. HAMMERS
 1411 WOODSEY HEIGHTS
 COLORADO SPRINGS, CO 80915
 (719) 570-1589 FAX (719) 570-7008
 www.hammersconstruction.com

THIS DRAWING CONTAINS MATERIAL & INFORMATION WHICH MAY NOT BE REPRODUCED WITHOUT WRITTEN CONSENT OF HAMMERS CONSTRUCTION INC. THESE DRAWINGS ARE INTENDED TO BE USED ONLY BY HAMMERS CONSTRUCTION & ITS REPRESENTATIVES. THESE DRAWINGS HAVE NOT BEEN PREPARED FOR ANY OTHER PURPOSE THAN TO INDICATE THE GENERAL FEATURES AND PLACEMENT OF THE PROPOSED PROJECT. COPYRIGHT © 2022 HAMMERS CONSTRUCTION

VALLEY STREET
 NEW BUILDING
 1450 VALLEY STREET
 COLORADO SPRINGS, CO 80939
 EL PASO COUNTY, COLORADO

DATE: NOV. 7, 2022
 DRAWN BY: W. VENEROS
 PROJ. MGR: P. HOLLI-ARCUS
 SCALE: SEE PLAN
 APPROVED BY:
 JOB NO: 1304

RESUBMITTALS:
