

CALCULATION ZONE STATISTICS

DESCRIPTION	SYMBOL (fc)	AVERAGE (fc)	MAXIMUM (fc)	MINIMUM (fc)	MAX./MIN. (fc)	AVG./MIN. (fc)
EAST PARKING LOT	+	1.2	3.1	0.1	31.0:1	12.0:1

LIGHT FIXTURE SCHEDULE

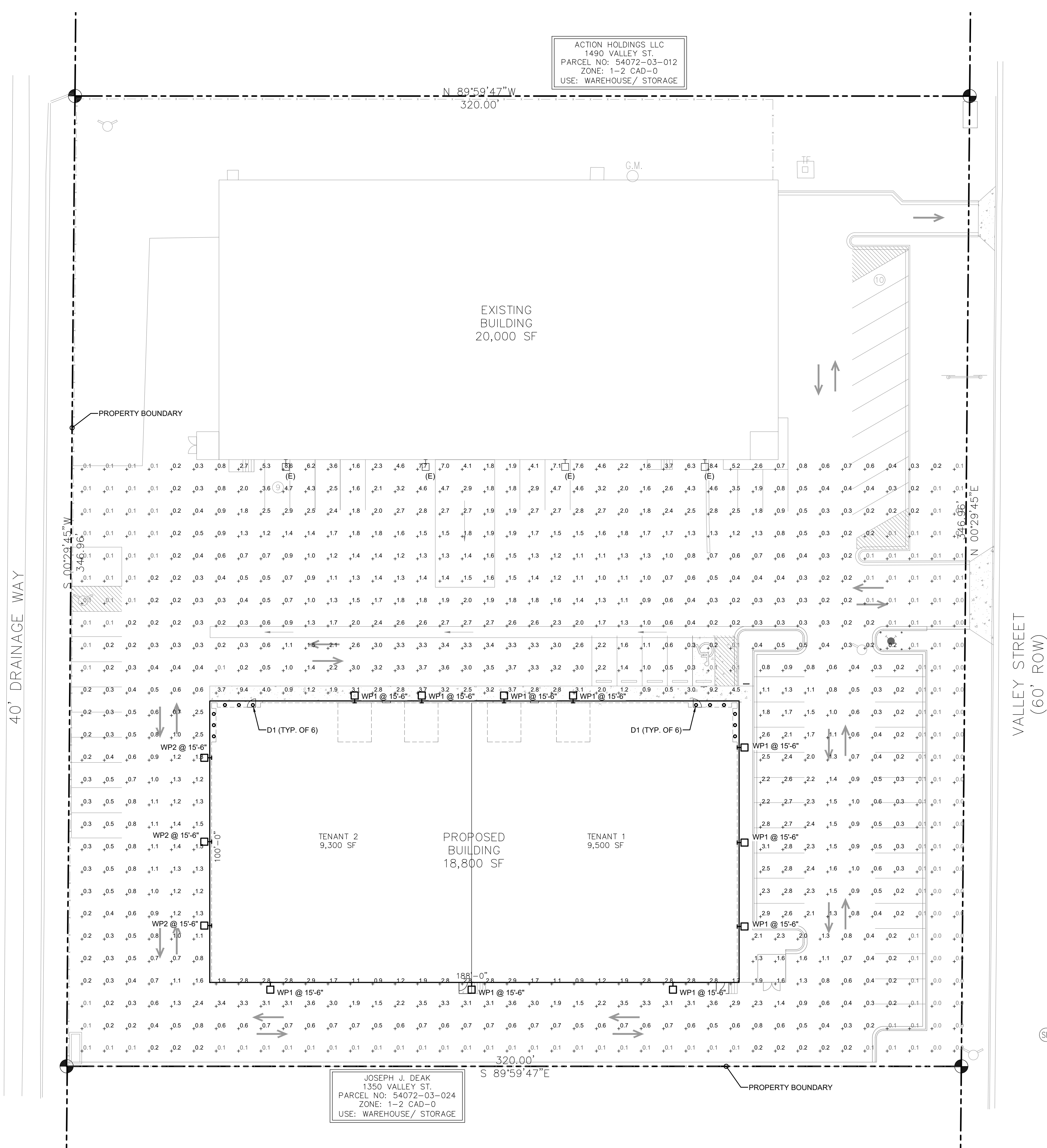
MARK	MANUF.	MODEL	LAMP			MOUNTING	DESCRIPTION	VOLTAGE	TOTAL WATTS	NOTES
			QTY.	WATT	TYPE					
D1	LITHONIA	LDN6 30/10 L06AR LSS	1	10.4	LED	RECESSED	6" DOWNLIGHT	120/277	10.4	
WP1	LITHONIA	WDGE2 LED P4 40K 80CRI TFTM	1	46.7	LED	SURFACE	WALLPACK	120/277	46.7	
WP2	LITHONIA	WDGE2 LED P4 40K 80CRI T1S	1	46.7	LED	SURFACE	WALLPACK	120/277	46.7	
WP3	LITHONIA	WDGE2 LED P2 40K 80CRI T4M	1	19.0	LED	SURFACE	WALLPACK	120/277	19.0	



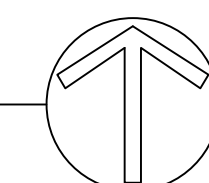
3 WDGE2 WALLPACK (WP1 - WP3)
SP0.1 SCALE: NONE



2 LDN6 DOWNLIGHT (D1)
SP0.1 SCALE: NONE



1 SITE PHOTOMETRIC PLAN
SP0.1 SCALE: 1"=20'-0"



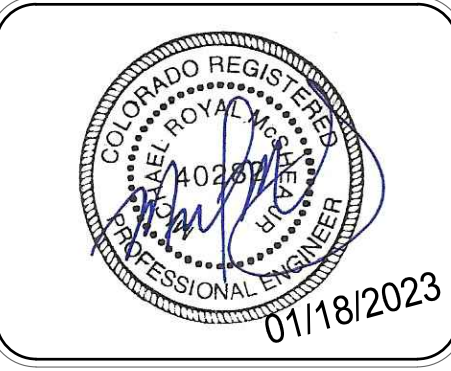
FILE #: EPPR 2258

HAMMERS CONSTRUCTION INC.
COMMERCIAL GENERAL CONTRACTORS SPECIALIZING IN DESIGN/BUILD
PRESIDENT: STEVE R. HAMMERS
VICE PRES: DAVID J. HAMMERS
1411 WOOLSEY HEIGHTS
COLORADO SPRINGS, CO 80915
(719) 570-1599 FAX (719) 570-7008
www.hammersconstruction.com

THIS DRAWING CONTAINS MATERIAL & INFORMATION WHICH MAY NOT BE REPRODUCED WITHOUT WRITTEN CONSENT OF HAMMERS CONSTRUCTION, INC. THESE DRAWINGS ARE INTENDED TO BE USED ONLY BY HAMMERS CONSTRUCTION & ITS REPRESENTATIVES. THESE DRAWINGS HAVE NOT BEEN PREPARED FOR ANY OTHER PURPOSE THAN TO INDICATE THE GENERAL FEATURES AND PLACEMENT OF THE PROPOSED PROJECT. COPYRIGHT 2022 HAMMERS CONSTRUCTION

VALLEY STREET
NEW BUILDING
1450 VALLEY STREET
COLORADO SPRINGS, CO 80939
EL PASO COUNTY, COLORADO

McShea Consulting, LLC
MECHANICAL • ELECTRICAL • PLUMBING
Colorado Springs, CO 80907
mcsheaconsulting.com
Project 22-6771




DATE: OCT. 25, 2022
DRAWN BY: C. FORRESTER
PROJ. MNGR: P. HOLLI-ARCUS
SCALE: SEE PLAN
APPROVED BY: MRM
JOB NO: 1304

RESUBMITTALS:

SP0.1

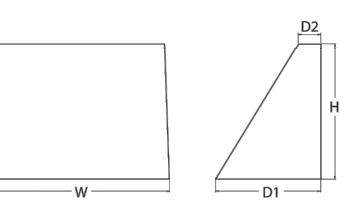
WEDGE2 LED

Architectural Wall Sconce
Precision Refractive Optic



Country: USA
Finish: White
Type: Sconce

Specifications
Depth (D1): 7"
Depth (D2): 1.5"
Height: 9"
Width: 11.5"
Weight (without options): 3.55 lb



Introduction
The WEDGE2 LED family is designed to meet specific, every well-enclosed lighting need in a widely recognized shape that blends with any architecture. The clean, rectangular design comes in four sizes with lumens packages ranging from 1,200 to 20,000 lumens, providing a true, low-profile solution. Equipped with rugged, all-wireless controls, the WEDGE2 family provides additional energy savings and code compliance.

WEDGE2 with industry leading precision refractive optics provides great uniform distribution and optical control. When combined with multiple integrated emergency battery backup options, including an 80% cut temperature option, the WEDGE2 becomes the ideal well-enclosed lighting solution for production scale applications in any environment.

WEDGE LED Family Overview

Leadtime	Model	Height (H)	Width (W)	Depth (D)	Weight (lb)	Power (W)	Beam Spread	Beam Angle	Beam Diameter (ft)	Beam Diameter (in)	Beam Diameter (mm)
1-2 weeks	WEDGE2 LED	9"	11.5"	7"	3.55	1200	120°	120°	1.5'	18"	457
1-2 weeks	WEDGE2 LED	9"	11.5"	7"	3.55	2400	120°	120°	3.0'	36"	914
1-2 weeks	WEDGE2 LED	9"	11.5"	7"	3.55	4800	120°	120°	6.0'	72"	1828
1-2 weeks	WEDGE2 LED	9"	11.5"	7"	3.55	9600	120°	120°	12.0'	144"	3658

Ordering Information EXAMPLE: WEDGE2 LED P3 40K 80CR V FVOLT SRM DBWB

Color: White
Finish: White
Type: Sconce

Accessories

WEDGE2 LED P3 40K 80CR V FVOLT SRM DBWB
WEDGE2 LED P3 40K 80CR V FVOLT SRM DBWB

Performance Data

Lumen Output

Model	Power (W)	Beam Spread	Beam Angle	Beam Diameter (ft)	Beam Diameter (in)	Beam Diameter (mm)
WEDGE2 LED P3 40K 80CR V FVOLT SRM DBWB	40W	120°	120°	1.5'	18"	457

Electrical Load

Model	Power (W)	Beam Spread	Beam Angle	Beam Diameter (ft)	Beam Diameter (in)	Beam Diameter (mm)
WEDGE2 LED P3 40K 80CR V FVOLT SRM DBWB	40W	120°	120°	1.5'	18"	457

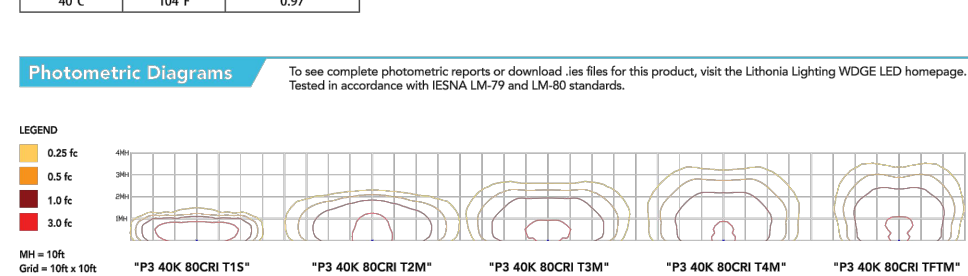
Lumen Output in Emergency Mode (4000K, 80 CR, TSM)

Model	Power (W)	Beam Spread	Beam Angle	Beam Diameter (ft)	Beam Diameter (in)	Beam Diameter (mm)
WEDGE2 LED P3 40K 80CR V FVOLT SRM DBWB	40W	120°	120°	1.5'	18"	457

Lumen Ambient Temperature (LAT) Multipliers

Temp (°C)	Multiplier
0°C	1.00
10°C	0.97
20°C	0.94
25°C	0.91
30°C	0.88
40°C	0.83

Photometric Diagrams



Emergency Egress Options

Emergency Battery Backup

The emergency battery backup is integral to the luminaire - no external housing required! This design provides reliable emergency operation while maintaining the aesthetics of the product. All emergency battery backup configurations include an independent secondary driver with an integral relay to immediately direct loss of normal power and automatically energize the luminaire. The emergency battery will power the luminaire for a minimum duration of 90 minutes (maximum duration of three hours) from the time normal power is lost and maintain a minimum of 60% of the light output at the end of 90 minutes.

Applicable codes: NFPA 70(NEC) - section 700.16, NFPA 101 Life Safety Code Section 7-9


LITHONIA LIGHTING COMMERCIAL OUTDOOR

One Lithonia Way • Corpey, Georgia 30022 • Phone: 1-800-765-8278 • www.lithonia.com WDS021-02 Rev. 05/21/22

LITHONIA LIGHTING

LDN6

8" Open and Wall/In-Led
New Construction Downlight



FEATURES & SPECIFICATIONS

Introduction
The LDN6 LED family is designed to meet specific, every well-enclosed lighting need in a widely recognized shape that blends with any architecture. The clean, rectangular design comes in four sizes with lumens packages ranging from 1,200 to 20,000 lumens, providing a true, low-profile solution. Equipped with rugged, all-wireless controls, the LDN6 family provides additional energy savings and code compliance.

LDN6 with industry leading precision refractive optics provides great uniform distribution and optical control. When combined with multiple integrated emergency battery backup options, including an 80% cut temperature option, the LDN6 becomes the ideal well-enclosed lighting solution for production scale applications in any environment.

LDN6 LED Family Overview

Leadtime	Model	Height (H)	Width (W)	Depth (D)	Weight (lb)	Power (W)	Beam Spread	Beam Angle	Beam Diameter (ft)	Beam Diameter (in)	Beam Diameter (mm)
1-2 weeks	LDN6 LED	8"	8"	4"	1.5	1200	120°	120°	1.5'	18"	457
1-2 weeks	LDN6 LED	8"	8"	4"	1.5	2400	120°	120°	3.0'	36"	914
1-2 weeks	LDN6 LED	8"	8"	4"	1.5	4800	120°	120°	6.0'	72"	1828
1-2 weeks	LDN6 LED	8"	8"	4"	1.5	9600	120°	120°	12.0'	144"	3658

Ordering Information EXAMPLE: LDN6 LED P3 40K 80CR V FVOLT SRM DBWB

Color: White
Finish: White
Type: Downlight

Accessories

LDN6 LED P3 40K 80CR V FVOLT SRM DBWB
LDN6 LED P3 40K 80CR V FVOLT SRM DBWB

Performance Data

Lumen Output

Model	Power (W)	Beam Spread	Beam Angle	Beam Diameter (ft)	Beam Diameter (in)	Beam Diameter (mm)
LDN6 LED P3 40K 80CR V FVOLT SRM DBWB	40W	120°	120°	1.5'	18"	457

LITHONIA LIGHTING COMMERCIAL OUTDOOR

One Lithonia Way • Corpey, Georgia 30022 • Phone: 1-800-765-8278 • www.lithonia.com WDS021-02 Rev. 05/21/22

HAMMERS CONSTRUCTION INC.

COMMERCIAL GENERAL CONTRACTORS SPECIALIZING IN DESIGN/BUILD

PRESIDENT: STEVE R. HAMMERS
VICE PRES: DAVID J. HAMMERS
1411 WOOLSEY HEIGHTS
COLORADO SPRINGS, CO 80915
(719) 570-1599 FAX (719) 570-7008
www.hammersconstruction.com

THIS DRAWING CONTAINS MATERIAL & INFORMATION THAT IS THE PROPERTY OF HAMMERS CONSTRUCTION, INC. THESE DRAWINGS ARE INTENDED TO BE USED ONLY BY HAMMERS CONSTRUCTION & ITS REPRESENTATIVES. THESE DRAWINGS HAVE NOT BEEN PREPARED FOR ANY OTHER PURPOSE THAN TO INDICATE THE GENERAL FEATURES AND PLACEMENT OF THE PROPOSED PROJECT. COPYRIGHT 2022 HAMMERS CONSTRUCTION

VALLEY STREET
NEW BUILDING
1450 VALLEY STREET
COLORADO SPRINGS, CO 80939
EL PASO COUNTY, COLORADO

cShea Consulting, LLC

MECHANICAL • ELECTRICAL • PLUMBING
Colorado Springs, CO 80907
mcsheaconsulting.com
Project 22-6771

PROFESSIONAL ENGINEER
01/18/2023

DATE: OCT. 25, 2022
DRAWN BY: C. FORRESTER
PROJ. MNGR: P. HOLLI-ARCUS
SCALE: SEE PLAN
APPROVED BY: MRM
JOB NO: 1304

RESUBMITTALS:

SP0.2