

CALCULATION ZONE STATISTICS

DESCRIPTION	SYMBOL (fc)	AVERAGE (fc)	MAXIMUM (fc)	MINIMUM (fc)	MAX./MIN. (fc)	AVG./MIN. (fc)
EAST PARKING LOT	+	1.2	3.1	0.1	31.0:1	12.0:1

LIGHT FIXTURE SCHEDULE

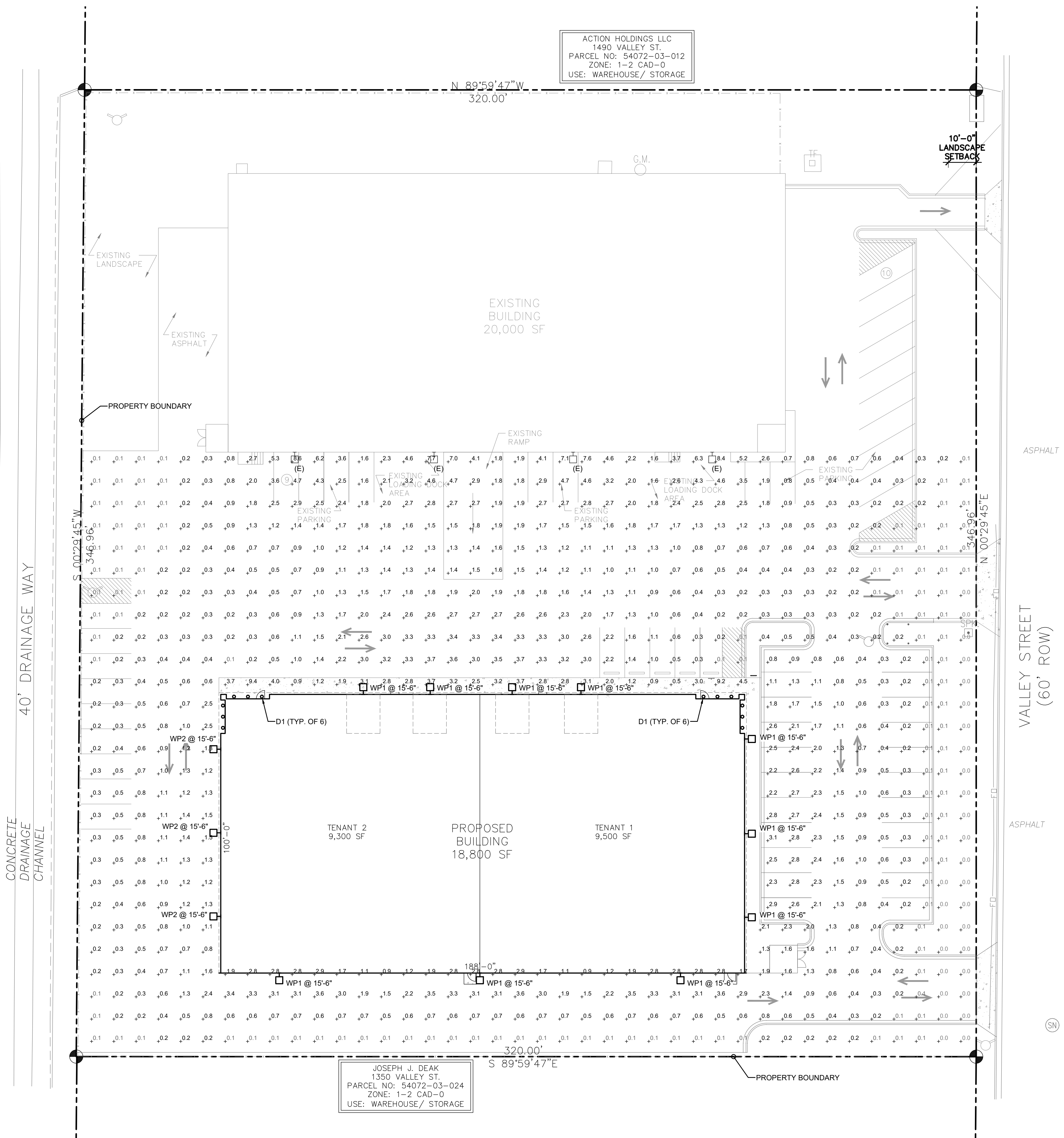
MARK	MANUF.	MODEL	LAMP			MOUNTING	DESCRIPTION	VOLTAGE	TOTAL WATTS	NOTES
			QTY.	WATT	TYPE					
D1	LITHONIA	LDN6 30/10 L06AR LSS	1	10.4	LED	RECESSED	6" DOWNLIGHT	120/277	10.4	
WP1	LITHONIA	WDGE2 LED P4 40K 80CRI TFTM	1	46.7	LED	SURFACE	WALLPACK	120/277	46.7	
WP2	LITHONIA	WDGE2 LED P4 40K 80CRI T1S	1	46.7	LED	SURFACE	WALLPACK	120/277	46.7	
WP3	LITHONIA	WDGE2 LED P2 40K 80CRI T4M	1	19.0	LED	SURFACE	WALLPACK	120/277	19.0	



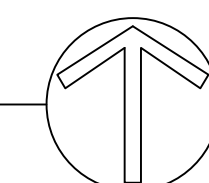
3 WDGE2 WALLPACK (WP1 - WP3)
SP0.1 SCALE: NONE



2 LDN6 DOWNLIGHT (D1)
SP0.1 SCALE: NONE



1 SITE PHOTOMETRIC PLAN
SP0.1 SCALE: 1"=20'-0"

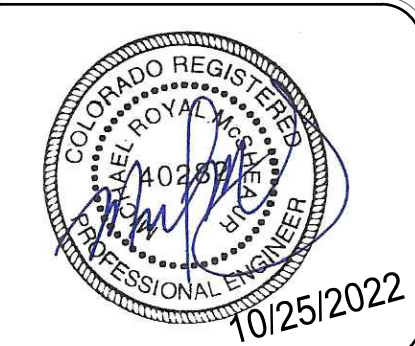


HAMMERS CONSTRUCTION INC.
COMMERCIAL GENERAL CONTRACTORS SPECIALIZING IN DESIGN/BUILD
PRESIDENT: STEVE R. HAMMERS
VICE PRES: DAVID J. HAMMERS
1411 WOOLSEY HEIGHTS
COLORADO SPRINGS, CO 80915
(719) 570-1599 FAX (719) 570-7008
www.hammersconstruction.com

THIS DRAWING CONTAINS MATERIAL & INFORMATION WHICH MAY NOT BE REPRODUCED WITHOUT WRITTEN CONSENT OF HAMMERS CONSTRUCTION, INC. THESE DRAWINGS ARE INTENDED TO BE USED ONLY BY HAMMERS CONSTRUCTION & ITS REPRESENTATIVES. THESE DRAWINGS HAVE NOT BEEN PREPARED FOR ANY OTHER PURPOSE THAN TO INDICATE THE GENERAL FEATURES AND PLACEMENT OF THE PROPOSED PROJECT. COPYRIGHT 2022 HAMMERS CONSTRUCTION

VALLEY STREET
NEW BUILDING
1450 VALLEY STREET
COLORADO SPRINGS, CO 80939
EL PASO COUNTY, COLORADO

McShea Consulting, LLC
MECHANICAL • ELECTRICAL • PLUMBING
Colorado Springs, CO 80907
mcsheac consulting.com
Project 22-6771




DATE: OCT. 25, 2022
DRAWN BY: C. FORRESTER
PROJ. MNGR: P. HOLLI-ARCUS
SCALE: SEE PLAN
APPROVED BY: MRM
JOB NO: 1304

RESUBMITTALS:

SP0.1

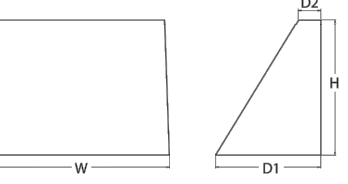
WEDGE2 LED

Architectural Wall Sconce
Precision Refractive Optic



Country: USA
Finish: White
Type: Sconce

Specifications
Depth (D1): 7"
Depth (D2): 1.5"
Height: 9"
Width: 11.5"
Weight (without options): 3.5 lbs



Introduction
The WEDGE2 LED family is designed to meet specifiers' every well-encouraged lighting need in a widely recognized shape that blends with any architecture. The clean, rectangular design comes in four sizes with lumens packages ranging from 1,200 to 20,000 lumens, providing a true blue-white solution. Equipped with rugged, IP67 wireless controls, the WEDGE2 family provides additional energy savings and code compliance.

WEDGE2 with industry leading precision refractive optics provides great uniform distribution and optical control. When combined with multiple integrated emergency battery backup options, including an 80% cut temperature option, the WEDGE2 becomes the ideal well-encouraged lighting solution for production scale applications in any environment.

WEDGE LED Family Overview

Leadtime	Model	Height (D1)	Width (D2)	Depth (D3)	Weight	Material	Finish	Color	Beam Angle	Beam Spread	Beam Diameter	Beam Spread	Beam Diameter	Beam Spread	Beam Diameter	Beam Spread
1-2 weeks	WEDGE2 LED	9"	11.5"	7"	3.5 lbs	Aluminum	White	3000K	30°	1.5m	1.5m	1.5m	1.5m	1.5m	1.5m	
1-2 weeks	WEDGE2 LED	9"	11.5"	7"	3.5 lbs	Aluminum	White	4000K	30°	1.5m	1.5m	1.5m	1.5m	1.5m	1.5m	
1-2 weeks	WEDGE2 LED	9"	11.5"	7"	3.5 lbs	Aluminum	White	5000K	30°	1.5m	1.5m	1.5m	1.5m	1.5m	1.5m	
1-2 weeks	WEDGE2 LED	9"	11.5"	7"	3.5 lbs	Aluminum	White	6000K	30°	1.5m	1.5m	1.5m	1.5m	1.5m	1.5m	

Ordering Information EXAMPLE: WEDGE2 LED P3 40K 80CR V FVOLT SSM DBWB

Color: White | Lumens: 4000 | Beam Angle: 30° | Material: Aluminum | Finish: White | Country: USA

Accessories

Part	Description	Notes
WEDGE2 LED	Emergency battery backup, 12V, 10Ah, 100Wh	Standard backup
WEDGE2 LED	Emergency battery backup, 12V, 20Ah, 200Wh	Standard backup
WEDGE2 LED	Emergency battery backup, 12V, 40Ah, 400Wh	Standard backup
WEDGE2 LED	Emergency battery backup, 12V, 80Ah, 800Wh	Standard backup
WEDGE2 LED	Emergency battery backup, 12V, 160Ah, 1600Wh	Standard backup

Performance Data

Lumen Output

Model	Beam Angle	Beam Diameter	Beam Spread	Beam Diameter	Beam Spread	Beam Diameter	Beam Spread	Beam Diameter	Beam Spread
P1	30°	1.5m	1.5m	1.5m	1.5m	1.5m	1.5m	1.5m	1.5m
P1	30°	1.5m	1.5m	1.5m	1.5m	1.5m	1.5m	1.5m	1.5m
P1	30°	1.5m	1.5m	1.5m	1.5m	1.5m	1.5m	1.5m	1.5m
P1	30°	1.5m	1.5m	1.5m	1.5m	1.5m	1.5m	1.5m	1.5m
P1	30°	1.5m	1.5m	1.5m	1.5m	1.5m	1.5m	1.5m	1.5m

Electrical Load

Model	Power (W)	Power (VA)	Power (VA)	Power (VA)
P1	110	130	130	130
P1	110	130	130	130
P1	110	130	130	130
P1	110	130	130	130
P1	110	130	130	130

Lumen Output in Emergency Mode (4000K, 80 CR, TSM)

Model	Power (W)	Power (VA)	Power (VA)
ETW9	1.58	1.58	1.58
EWK	2.28	2.28	2.28

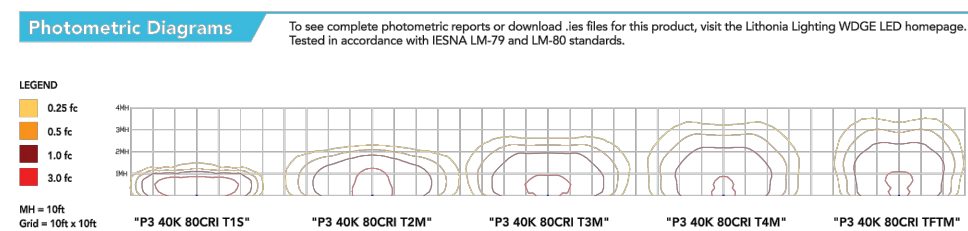
Lumen Ambient Temperature (LAT) Multipliers

Temp (°C)	Multiplier
0°C	1.00
10°C	0.97
20°C	0.94
25°C	0.91
30°C	0.88
40°C	0.83

Projected LED Lumen Maintenance

Hours	Lumen Maintenance (%)
0	100.00
10,000	95.00
20,000	90.00
30,000	85.00
40,000	80.00
50,000	75.00
60,000	70.00
70,000	65.00
80,000	60.00
90,000	55.00
100,000	50.00

Photometric Diagrams



Emergency Egress Options

Emergency Battery Backup


The emergency battery backup is integral to the luminaire - no external housing required! This design provides reliable emergency operation while maintaining the aesthetics of the product. All emergency battery backup configurations include an independent secondary driver with an integral relay to immediately direct loss of normal power and automatically energize the luminaire. The emergency battery will power the luminaire for a minimum duration of 90 minutes (minimum duration of three hours) from the time normal power is lost and maintain a minimum of 60% of the light output at the end of 90 minutes.

Applicable codes: NFPA 70(NEC) - section 700.16, NFPA 101 Life Safety Code Section 7-9

LITHONIA LIGHTING

LDN6

8" Open and Wall/In-Lid
New Construction Downlight



FEATURES & SPECIFICATIONS

Introduction
The LDN6 LED family is designed to meet specifiers' every well-encouraged lighting need in a widely recognized shape that blends with any architecture. The clean, rectangular design comes in four sizes with lumens packages ranging from 1,200 to 20,000 lumens, providing a true blue-white solution. Equipped with rugged, IP67 wireless controls, the LDN6 family provides additional energy savings and code compliance.

LDN6 with industry leading precision refractive optics provides great uniform distribution and optical control. When combined with multiple integrated emergency battery backup options, including an 80% cut temperature option, the LDN6 becomes the ideal well-encouraged lighting solution for production scale applications in any environment.

Ordering Information EXAMPLE: LDN6 35° 1500LM 5000K DBWB

Color: White | Lumens: 1500 | Beam Angle: 35° | Material: Aluminum | Finish: White | Country: USA

Accessories

Part	Description	Notes
LDN6 LED	Emergency battery backup, 12V, 10Ah, 100Wh	Standard backup
LDN6 LED	Emergency battery backup, 12V, 20Ah, 200Wh	Standard backup
LDN6 LED	Emergency battery backup, 12V, 40Ah, 400Wh	Standard backup
LDN6 LED	Emergency battery backup, 12V, 80Ah, 800Wh	Standard backup
LDN6 LED	Emergency battery backup, 12V, 160Ah, 1600Wh	Standard backup

Performance Data

Lumen Output

Model	Beam Angle	Beam Diameter	Beam Spread	Beam Diameter	Beam Spread	Beam Diameter	Beam Spread	Beam Diameter	Beam Spread
P1	30°	1.5m	1.5m	1.5m	1.5m	1.5m	1.5m	1.5m	1.5m
P1	30°	1.5m	1.5m	1.5m	1.5m	1.5m	1.5m	1.5m	1.5m
P1	30°	1.5m	1.5m	1.5m	1.5m	1.5m	1.5m	1.5m	1.5m
P1	30°	1.5m	1.5m	1.5m	1.5m	1.5m	1.5m	1.5m	1.5m
P1	30°	1.5m	1.5m	1.5m	1.5m	1.5m	1.5m	1.5m	1.5m

Electrical Load

Model	Power (W)	Power (VA)	Power (VA)	Power (VA)
P1	110	130	130	130
P1	110	130	130	130
P1	110	130	130	130
P1	110	130	130	130
P1	110	130	130	130

Lumen Output in Emergency Mode (4000K, 80 CR, TSM)

Model	Power (W)	Power (VA)	Power (VA)
ETW9	1.58	1.58	1.58
EWK	2.28	2.28	2.28

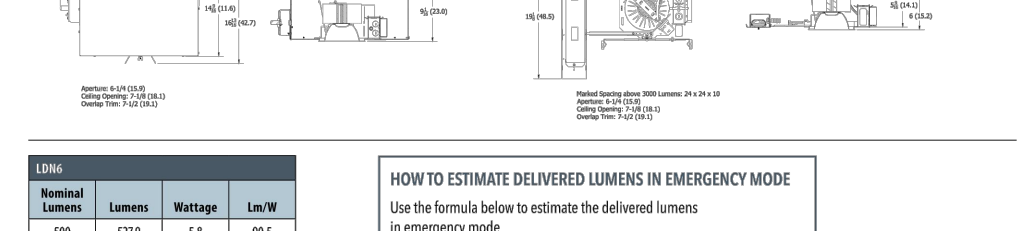
Lumen Ambient Temperature (LAT) Multipliers

Temp (°C)	Multiplier
0°C	1.00
10°C	0.97
20°C	0.94
25°C	0.91
30°C	0.88
40°C	0.83

Projected LED Lumen Maintenance

Hours	Lumen Maintenance (%)
0	100.00
10,000	95.00
20,000	90.00
30,000	85.00
40,000	80.00
50,000	75.00
60,000	70.00
70,000	65.00
80,000	60.00
90,000	55.00
100,000	50.00

Photometric Diagrams



Emergency Egress Options

Emergency Battery Backup

The emergency battery backup is integral to the luminaire - no external housing required! This design provides reliable emergency operation while maintaining the aesthetics of the product. All emergency battery backup configurations include an independent secondary driver with an integral relay to immediately direct loss of normal power and automatically energize the luminaire. The emergency battery will power the luminaire for a minimum duration of 90 minutes (minimum duration of three hours) from the time normal power is lost and maintain a minimum of 60% of the light output at the end of 90 minutes.

Applicable codes: NFPA 70(NEC) - section 700.16, NFPA 101 Life Safety Code Section 7-9

HAMMERS CONSTRUCTION INC.

COMMERCIAL GENERAL CONTRACTORS SPECIALIZING IN DESIGN/BUILD

PRESIDENT: STEVE R. HAMMERS
VICE PRES: DAVID J. HAMMERS
1411 WOOLSEY HEIGHTS
COLORADO SPRINGS, CO 80915
(719) 570-1599 FAX (719) 570-7008
www.hammersconstruction.com

THIS DRAWING CONTAINS MATERIAL & INFORMATION WHICH IS THE PROPERTY OF HAMMERS CONSTRUCTION, INC. THESE DRAWINGS ARE INTENDED TO BE USED ONLY BY HAMMERS CONSTRUCTION & ITS REPRESENTATIVES. THESE DRAWINGS HAVE NOT BEEN PREPARED FOR ANY OTHER PURPOSE THAN TO INDICATE THE GENERAL FEATURES AND PLACEMENT OF THE PROPOSED PROJECT. COPYRIGHT 2022 HAMMERS CONSTRUCTION

VALLEY STREET
NEW BUILDING
1450 VALLEY STREET
COLORADO SPRINGS, CO 80939
EL PASO COUNTY, COLORADO

cShea Consulting, LLC

MECHANICAL + ELECTRICAL + PLUMBING
Colorado Springs, CO 80907
mcsheaconsulting.com
Project 22-6771

PROFESSIONAL ENGINEER
10/25/2022

DATE: OCT. 25, 2022
DRAWN BY: C. FORRESTER
PROJ. MNGR: P. HOLLI-ARCUS
SCALE: SEE PLAN
APPROVED BY: MRM
JOB NO: 1304

RESUBMITTALS:

SP0.2