

El Paso County Parcel Information

PARCEL	NAME
5227300001	TIMBERRIDGE DEVELOPMENT GROUP LLC
5227200001	TIMBERRIDGE DEVELOPMENT GROUP LLC
5228000032	TIMBERRIDGE DEVELOPMENT GROUP LLC

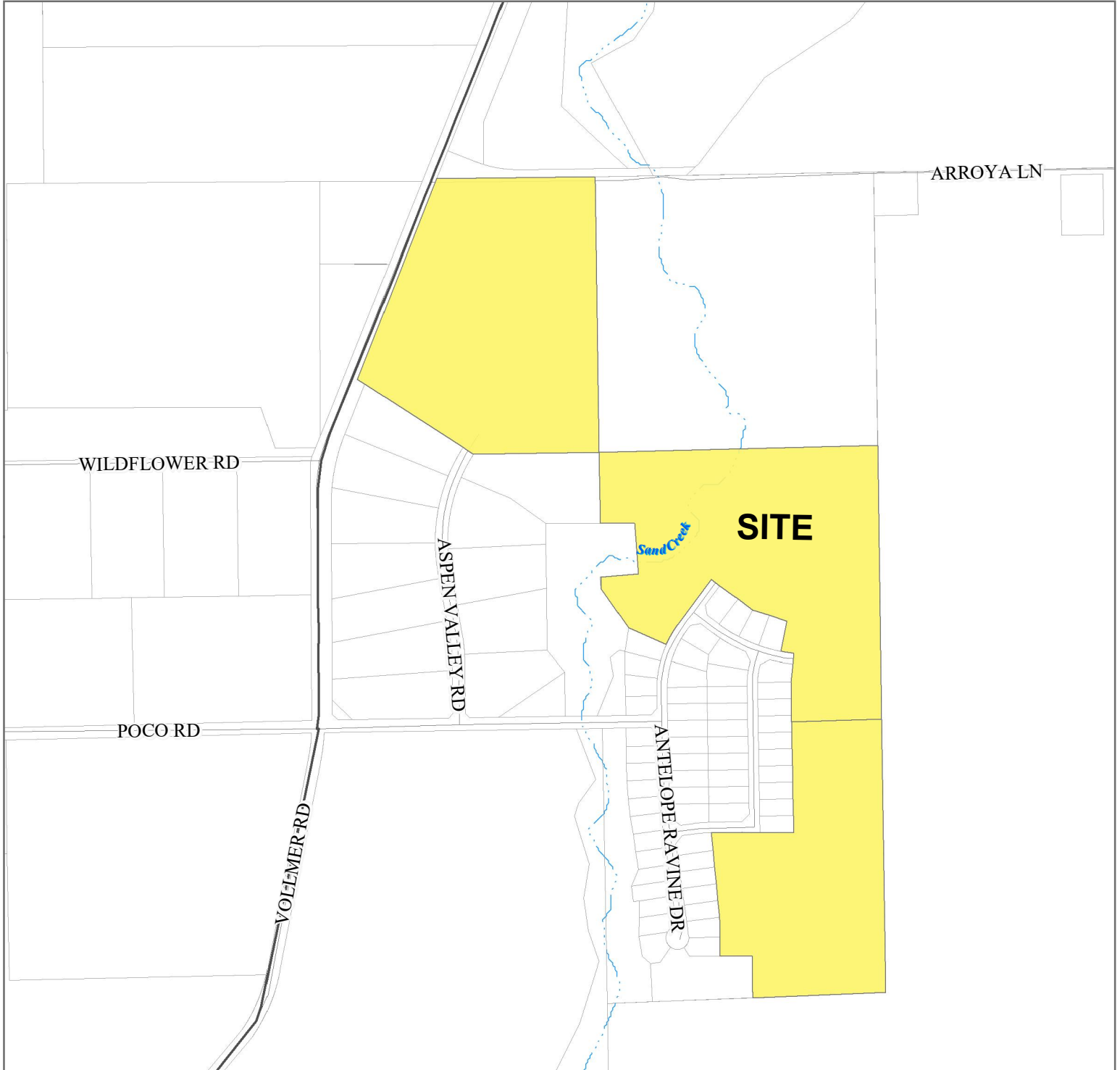
ADDRESS	CITY	STATE
2138 FLYING HORSE CLUB DR	COLORADO SPRINGS	CO
2138 FLYING HORSE CLUB DR	COLORADO SPRINGS	CO
2138 FLYING HORSE CLUB DR	COLORADO SPRINGS	CO

ZIP	ZIPLUS
80921	
80921	
80921	

File Name: SF-21-21

Zone Map No.: --

Date: May 16, 2022



Please report any parcel discrepancies to:
 El Paso County Assessor
 1675 W. Garden of the Gods Rd.
 Colorado Springs, CO 80907
 (719) 520-6600



COPYRIGHT 2022 by the Board of County Commissioners, El Paso County, Colorado. All rights reserved. No part of this document or data contained hereon may be reproduced; used to prepare derivative products; or distributed without the specific written approval of the Board of County Commissioners, El Paso County, Colorado. This document was prepared from the best data available at the time of printing. El Paso County, Colorado, makes no claim as to the completeness or accuracy of the data contained hereon.