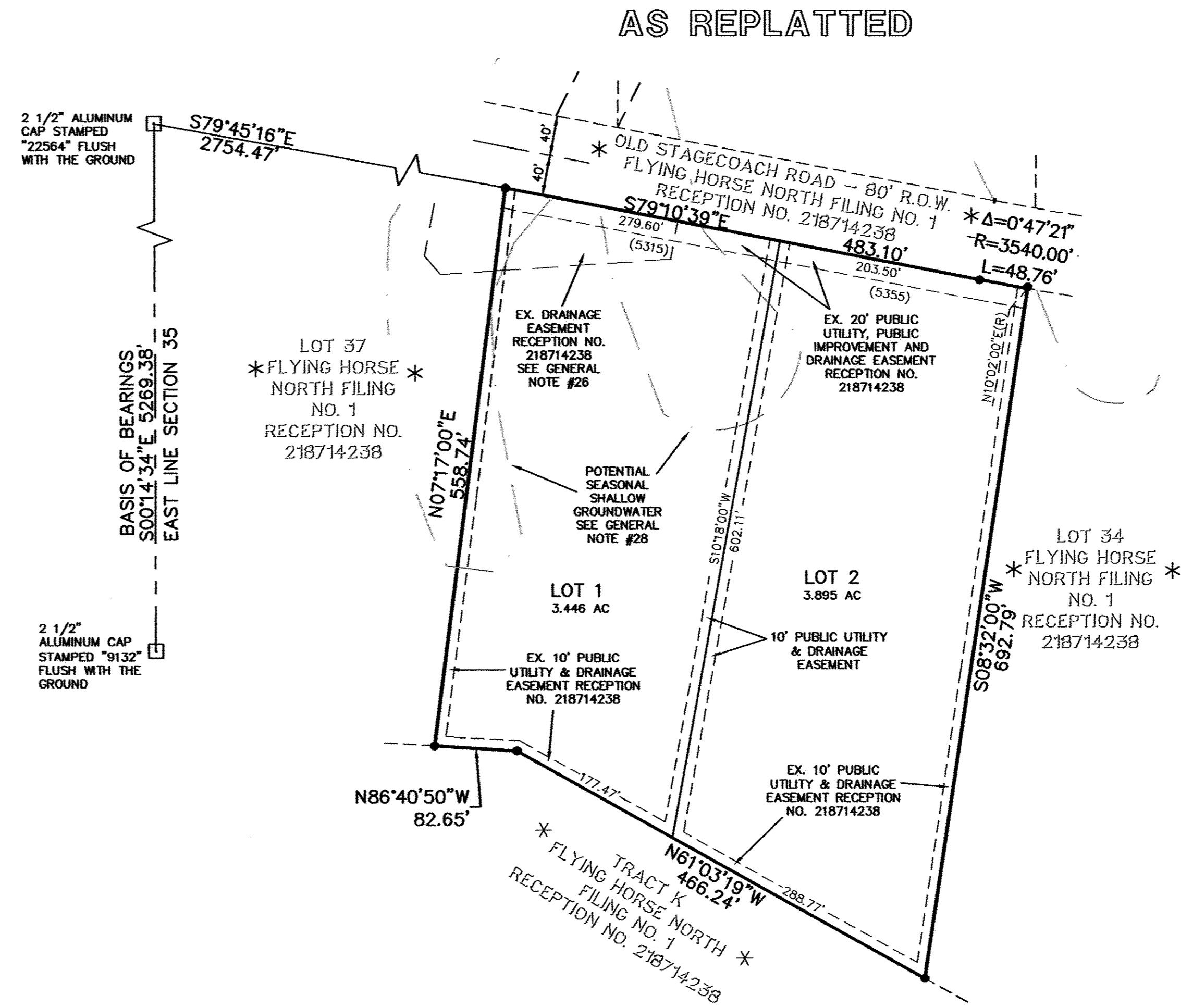
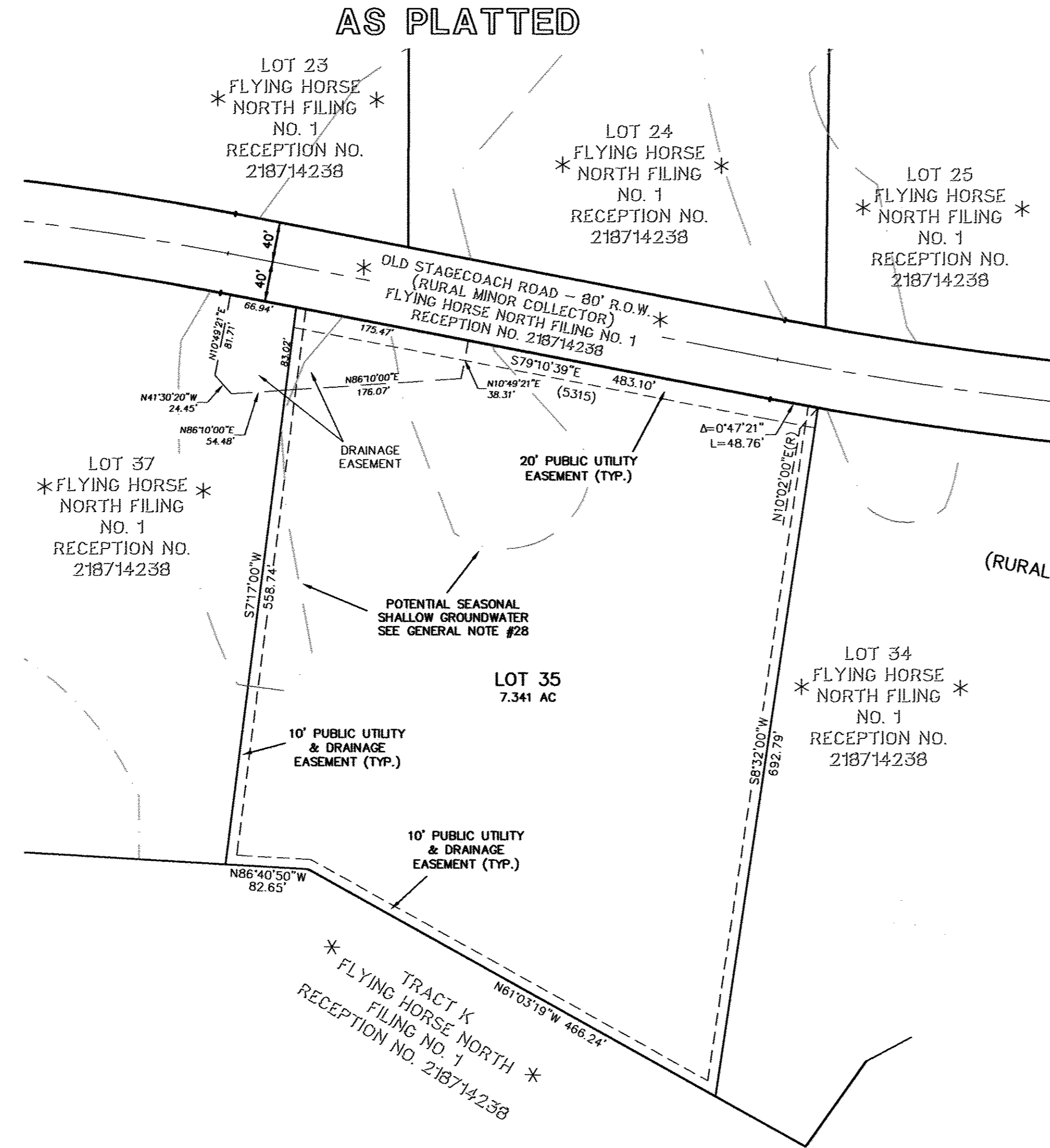


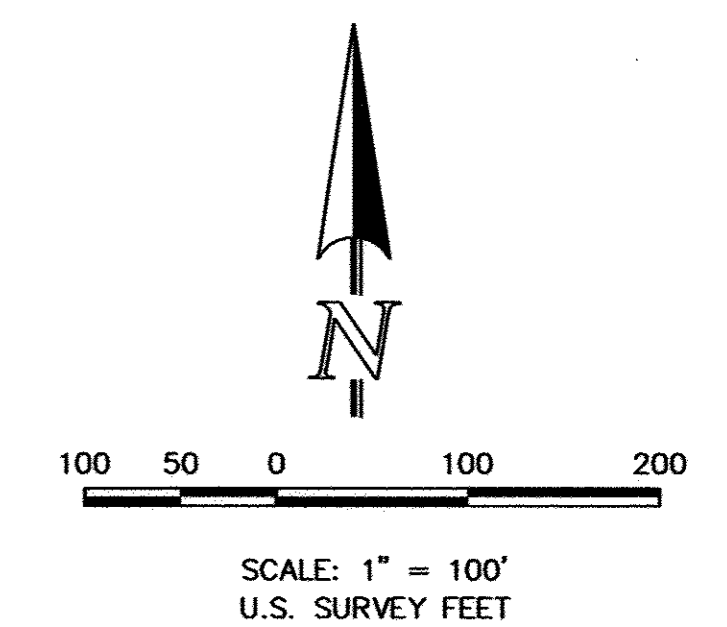
FLYING HORSE NORTH FILING NO. 1A

A PORTION OF THE NORTH HALF OF SECTION 36, TOWNSHIP 11 SOUTH, RANGE 66 WEST OF THE SIXTH PRINCIPAL MERIDIAN, EL PASO COUNTY, COLORADO

14356



COLOrado LICENSING BOARD
PROFESSIONAL LAND SURVEYOR
5-23-19
30118
Wayne



- LEGEND**
- NO. 5 REBAR WITH 1-1/2" ALUMINUM SURVEYORS CAP STAMPED "CCES LLC PLS 30118" RECOVERED FLUSH WITH THE GROUND
 - (XXXX) ADDRESS
 - * NOT PART OF THIS PLAT
 - (R) RADIAL BEARING

CLASSIC CONSULTING

619 N. Cascade Avenue, Suite 200
Colorado Springs, Colorado 80903
(719)785-0790
(719)785-0799 (Fax)

RBD