

CHEROKEE METROPOLITAN DISTRICT EL LICOTT CHLORINATOR UPGRADES EL PASO COUNTY, COLORADO LANDSCAPE PLAN: PPR-2334

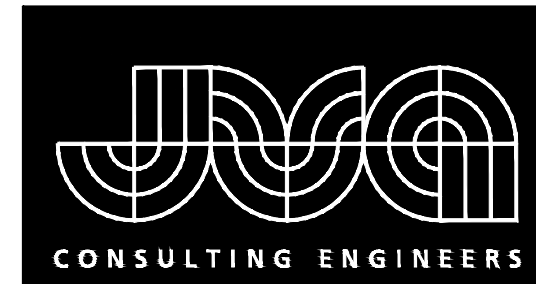
CONTACTS

OWNER: CHEROKEE METROPOLITAN DISTRICT
6250 PALMER PARK BOULEVARD
COLORADO SPRINGS, CO 80915

KEVIN BROWN, P.E.
(719) 322-4339
KBROWN@CHEROKEEMETRO.ORG

ENGINEER: JVA, INC
1319 SPRUCE STREET
BOULDER, CO 80302

JOSH MCGIBBON, P.E.
(303) 565-4941
JMCIBBON@JVA.JVA.COM



JVA, Inc. 1319 Spruce Street
Boulder, CO 80302 303.444.1951
www.jvajva.com
Boulder • Fort Collins • Winter Park
Glenwood Springs • Denver

LEGAL DESCRIPTION:

A TRACT OF LAND IN SEC 14-14-63 DESC AS FOLS: COM AT NE4NW4,
TH S 00°32'57" W 50.0 FT TO POB, CONT S 00°32'57" W 130.0 FT, N
88°41'59" W 290.0 FT, N 00°32'57" E 130.0 FT, TH S 88°41'59" E
290.0 FT TO POB

SHEET INDEX

SHEET NO.	TITLE
G0.0	COVER SHEET
G0.1	LEGEND, NOTES & ABBREVIATIONS
C1.0	LANDSCAPING PLAN

OCTOBER 2023

PREPARED UNDER THE SUPERVISION OF



J. McGibbon

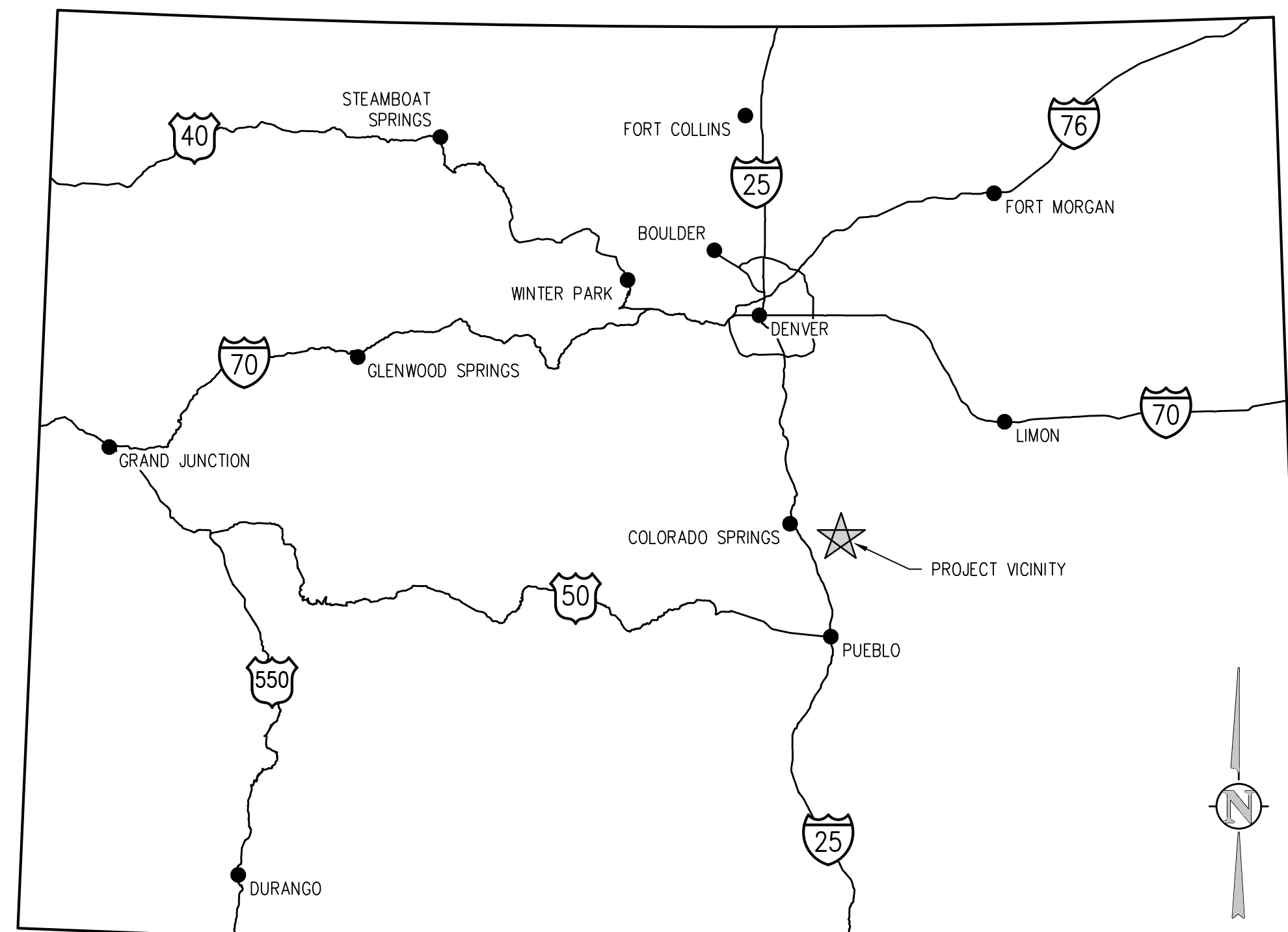
JVA, Inc.

ZONING:

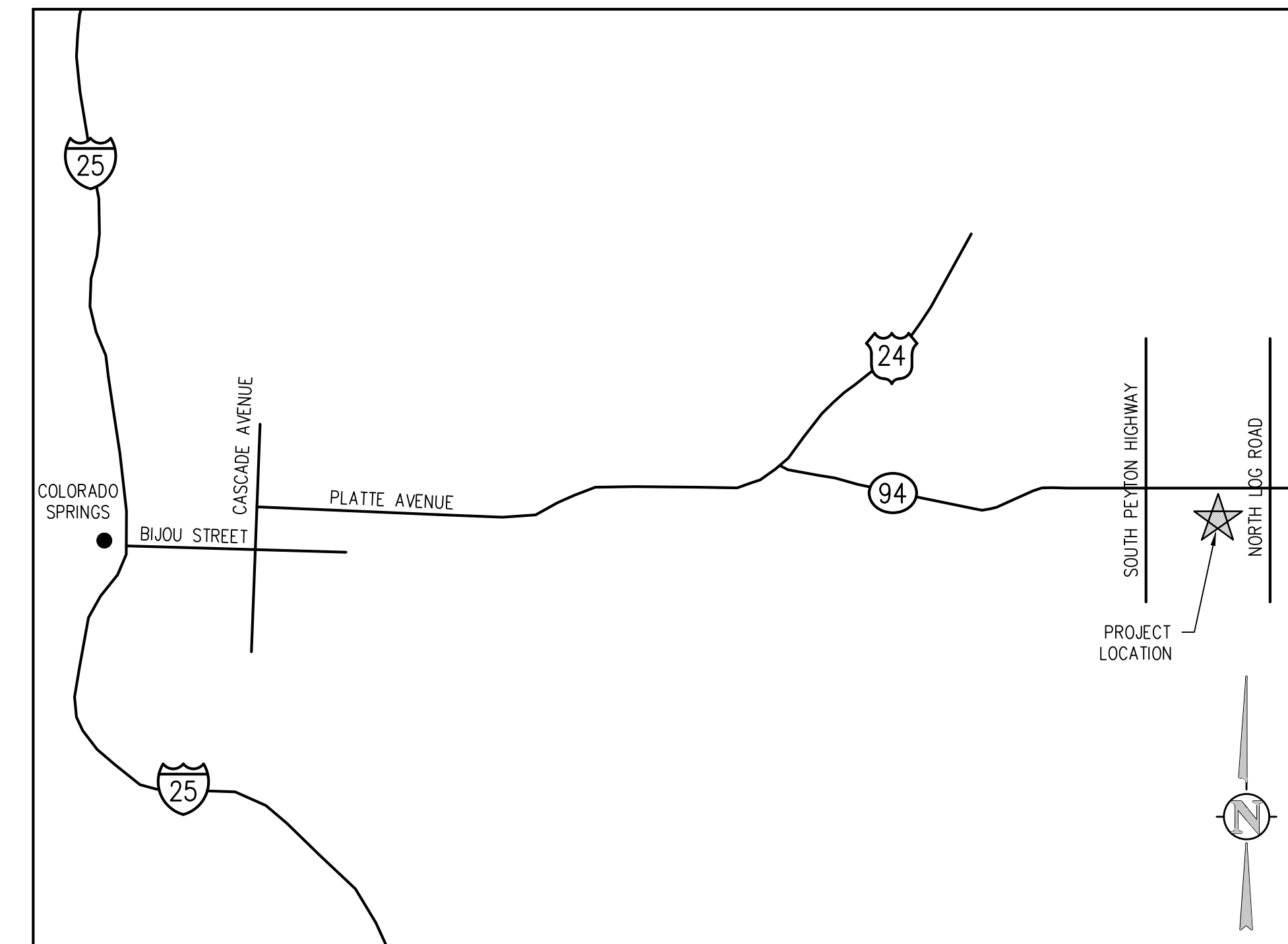
THE PROPERTY IS ZONED AS A-35 (AGRICULTURAL). THE PROPOSED PROJECT WILL NOT CHANGE THE ZONING DESIGNATION.

SITE DATA:

SITE ADDRESS:	21388 HWY 94, ELLICOTT, CO
PARCEL/SCHEDULE NUMBER:	3414201027
EXISTING/PROPOSED LAND USE:	EXEMPT POLITICAL SUBS/PUB SCHL
EXISTING LOT/PARCEL SIZE:	42,648 SF
PROPOSED LAND SWAPPED LOT/PARCEL SIZE:	48,571 SF
PROPOSED OPEN SPACE/LANDSCAPING COVERAGE:	16,432 SF
PROPOSED IMPERMEABLE SURFACE COVERAGE:	17,392 SF
EXISTING BUILDING FOOTPRINT:	1,388 SF
PROPOSED BUILDING FOOTPRINT:	1,303 SF
EXISTING STORAGE TANK FOOTPRINT:	2,220 SF
PROPOSED STORAGE TANK FOOTPRINT:	1,964 SF



VICINITY MAP
NTS



PROJECT LOCATION MAP
NTS

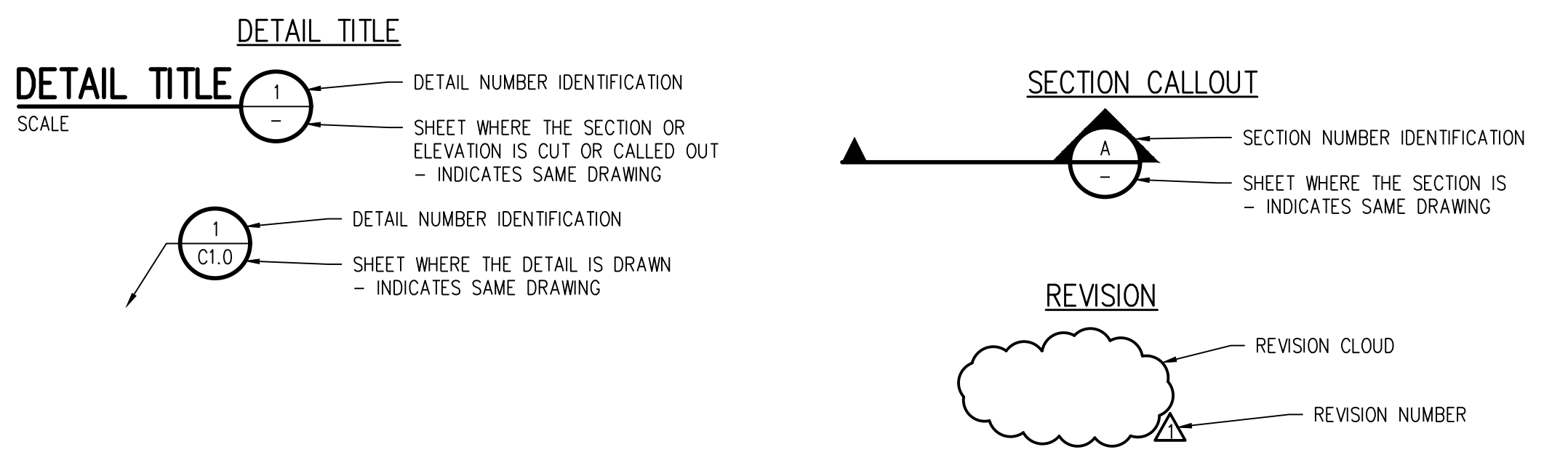
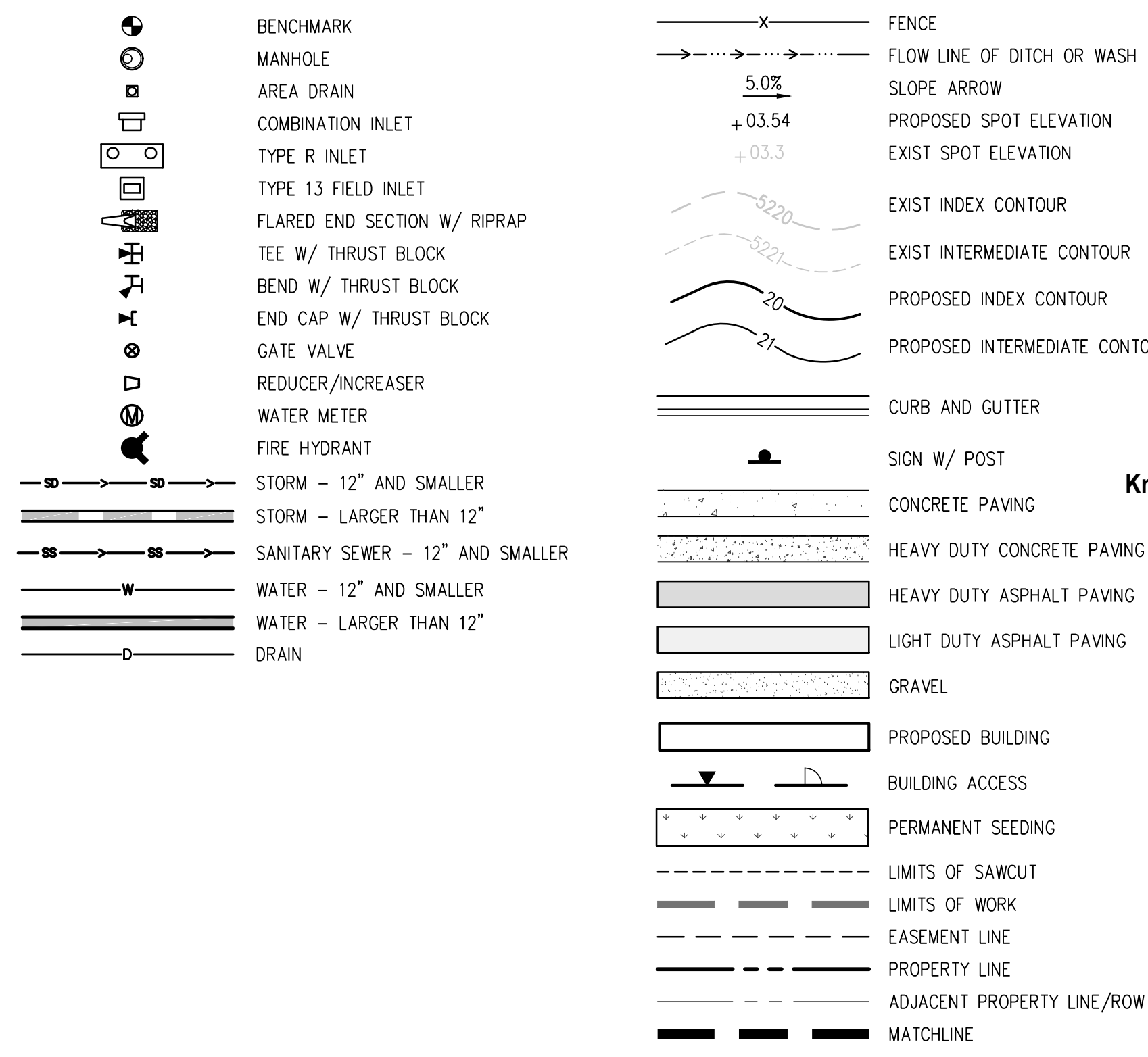
GENERAL NOTES

- ALL MATERIALS AND WORKMANSHIP SHALL BE IN CONFORMANCE WITH THE LATEST STANDARDS AND SPECIFICATIONS OF CHEROKEE METROPOLITAN DISTRICT, COLORADO DEPARTMENT OF TRANSPORTATION, CIMARRON HILLS FIRE PROTECTION REQUIREMENTS, AND APPLICABLE STATE AND LOCAL STANDARDS AND SPECIFICATIONS. THE CONTRACTOR SHALL HAVE IN POSSESSION AT THE JOB SITE AT ALL TIMES ONE (1) SIGNED COPY OF APPROVED PLANS, STANDARDS AND SPECIFICATIONS. CONTRACTOR SHALL CONSTRUCT AND MAINTAIN EMERGENCY ACCESS ROUTES TO THE SITE AND STRUCTURE AT ALL TIMES PER THE APPLICABLE CIMARRON HILLS FIRE PROTECTION DISTRICT REQUIREMENTS. THE CONTRACTOR SHALL OBTAIN WRITTEN APPROVAL FOR ANY VARIANCE TO THE ABOVE DOCUMENTS. NOTIFY ENGINEER OF ANY CONFLICTING STANDARDS OR SPECIFICATIONS. IN THE EVENT OF ANY CONFLICTING STANDARD OR SPECIFICATION, THE MORE STRINGENT OR HIGHER QUALITY STANDARD, DETAIL OR SPECIFICATION SHALL APPLY.
- THE CONTRACTOR SHALL OBTAIN, AT HIS OWN EXPENSE, ALL APPLICABLE CODES, LICENSES, STANDARD SPECIFICATIONS, PERMITS, BONDS, ETC., WHICH ARE NECESSARY TO PERFORM THE PROPOSED WORK, INCLUDING, BUT NOT LIMITED TO A LOCAL AND STATE GROUNDWATER DISCHARGE AND COLORADO DEPARTMENT OF HEALTH AND ENVIRONMENT (CDPHE) STORMWATER DISCHARGE PERMIT ASSOCIATED WITH CONSTRUCTION ACTIVITY.
- THE CONTRACTOR SHALL BE RESPONSIBLE FOR NOTIFYING THE REQUIRED PARTY (OWNER AND ENGINEER) AT LEAST 48 HOURS PRIOR TO START OF ANY CONSTRUCTION, PRIOR TO BACKFILLING, AND AS REQUIRED BY JURISDICTIONAL AUTHORITY AND/OR PROJECT SPECIFICATIONS. THE CONTRACTOR SHALL CONTINUE WITH NOTIFICATIONS THROUGHOUT THE PROJECT AS REQUIRED BY THE STANDARDS AND SPECIFICATIONS.
- THE LOCATIONS OF EXISTING UTILITIES ARE SHOWN IN THE APPROXIMATE LOCATION BASED ON INFORMATION BY OTHERS. NOT ALL UTILITIES MAY BE SHOWN. THE CONTRACTOR SHALL DETERMINE THE EXACT SIZE, LOCATION AND TYPE OF ALL EXISTING UTILITIES WHETHER SHOWN OR NOT BEFORE COMMENCING WORK. THE ENGINEER AND/OR OWNER ASSUMES NO RESPONSIBILITY FOR THE ACCURACY OR COMPLETENESS SHOWN ON PLANS. THE CONTRACTOR SHALL BE FULLY AND SOLELY RESPONSIBLE FOR ANY AND ALL DAMAGES AND COSTS WHICH MIGHT OCCUR BY THE CONTRACTOR'S FAILURE TO EXACTLY LOCATE AND PRESERVE ANY AND ALL UTILITIES. THE CONTRACTOR SHALL NOTIFY ALL PUBLIC AND PRIVATE UTILITY COMPANIES AND DETERMINE THE LOCATION OF ALL EXISTING UTILITIES PRIOR TO PROCEEDING WITH GRADING AND CONSTRUCTION. ALL WORK PERFORMED IN THE AREA OF UTILITIES SHALL BE PERMANENT AND INSPECTED ACCORDING TO THE REQUIREMENTS OF THE UTILITY OWNER. LIKEWISE, THE CONTRACTOR SHALL BE RESPONSIBLE FOR LOCATING AND MAPPING ANY EXISTING UTILITY (INCLUDING DEPTH) WHICH MAY CONFLICT WITH THE PROPOSED CONSTRUCTION, AND FOR RELOCATING ENCOUNTERED UTILITIES AS DIRECTED BY THE ENGINEER. CONTRACTOR SHALL CONTACT AND RECEIVE APPROVAL FROM OWNER AND ENGINEER BEFORE RELOCATING ANY ENCOUNTERED UTILITIES. CONTRACTOR RESPONSIBLE FOR SERVICE CONNECTIONS, AND RELOCATING AND RECONNECTING AFFECTED UTILITIES AS COORDINATED WITH UTILITY OWNER AND/OR ENGINEER, INCLUDING NON-MUNICIPAL UTILITIES (TELEPHONE, GAS, CABLE, ETC., WHICH SHALL BE COORDINATED WITH THE UTILITY OWNER). THE CONTRACTOR SHALL IMMEDIATELY CONTACT ENGINEER UPON DISCOVERY OF A UTILITY DISCREPANCY OR CONFLICT. AT LEAST 48 HOURS PRIOR TO CONSTRUCTION, THE CONTRACTOR SHALL NOTIFY THE UTILITY NOTIFICATION CENTER OF COLORADO (1-800-922-1987, WWW.UNCC.ORG). SEE SURVEY UTILITY LOCATION INFORMATION BELOW.
- THE CONTRACTOR SHALL BE SOLELY AND COMPLETELY RESPONSIBLE FOR CONDITIONS AT AND ADJACENT TO THE JOB SITE, INCLUDING SAFETY OF ALL PERSONS AND PROPERTY DURING THE PERFORMANCE OF THE WORK. THE CONTRACTOR SHALL PREPARE A TRAFFIC CONTROL PLAN FOR OWNER AND/OR CITY APPROVAL AND PROVIDE ALL LIGHTS, SIGNS, BARRICADES, FENCING, FLAGMEN OR OTHER DEVICES NECESSARY TO PROVIDE FOR PUBLIC SAFETY. THIS REQUIREMENT SHALL APPLY CONTINUOUSLY AND BE LIMITED TO NORMAL WORKING HOURS. THE CONTRACTOR AGREES TO COMPLY WITH THE PROVISIONS OF THE TRAFFIC CONTROL PLAN AND THE LATEST EDITION OF THE "MANUAL ON UNIFORM TRAFFIC CONTROL DEVICES," PART VI, FOR CONSTRUCTION SIGNAGE AND TRAFFIC CONTROL. ALL TEMPORARY AND PERMANENT TRAFFIC SIGNS SHALL COMPLY TO THE MANUAL ON UNIFORM TRAFFIC CONTROL DEVICES (MUTCD) WITH REGARD TO SIGN SHAPE, COLOR, SIZE, LETTERING, ETC. UNLESS OTHERWISE SPECIFIED. IF APPLICABLE, PART NUMBERS ON SIGNAGE DETAILS REFER TO MUTCD SIGN NUMBERS.
- THE CONTRACTOR SHALL BE RESPONSIBLE FOR REMOVING ANY GROUNDWATER ENCOUNTERED DURING THE CONSTRUCTION OF ANY PORTION OF THIS PROJECT. GROUNDWATER SHALL BE PUMPED, PIPED, REMOVED AND DISPOSED OF IN A MANNER WHICH DOES NOT CAUSE FLOODING OF EXISTING STREETS NOR EROSION ON ADJUTING PROPERTIES IN ORDER TO CONSTRUCT THE IMPROVEMENTS SHOWN ON THESE PLANS. GROUNDWATER TO BE PUMPED SHALL BE TESTED, PERMITTED, AND PUMPED PER THE STATE OF COLORADO AND LOCAL GROUNDWATER DISCHARGING PERMIT REQUIREMENTS.
- RIM AND GRATE ELEVATIONS SHOWN ON PLANS ARE APPROXIMATE ONLY AND ARE NOT TO BE TAKEN AS FINAL ELEVATIONS. THE CONTRACTOR SHALL ADJUST RIMS AND OTHER IMPROVEMENTS TO MATCH FINAL PAVEMENT AND FINISHED GRADE ELEVATIONS.
- THE EXISTING AND PROPOSED ELEVATIONS OF FLATWORK, SIDEWALKS, CURBS, THRESHOLDS, PAVING, ETC. AS SHOWN HEREON ARE BASED ON EXTRAPOLATION OF FIELD SURVEY DATA, EXISTING CONDITIONS, AND DATA PROVIDED BY OTHERS. AT CRITICAL AREAS AND SITE FEATURES, CONTRACTOR SHALL HAVE FORMWORK INSPECTED AND APPROVED BY OWNER, OWNER'S REPRESENTATIVE, OR ENGINEER PRIOR TO PLACING CONCRETE. MINOR ADJUSTMENTS, AS APPROVED, TO PROPOSED GRADES, INVERTS, ETC. MAY BE REQUIRED TO PREVENT PONDING OR SLOPE NOT IN CONFORMANCE WITH MUNICIPAL STANDARDS. ALL FLATWORK MUST PREVENT PONDING AND PROVIDE POSITIVE DRAINAGE AWAY FROM EXISTING AND PROPOSED BUILDINGS, WALLS, ROOF DRAIN OUTFALLS, ACROSS DRIVES AND WALKS, ETC., TOWARDS THE PROPOSED INTENDED DRAINAGE FEATURES AND CONVEYANCES.
- FINAL LIMITS OF REQUIRED ASPHALT SAWCUTTING AND PATCHING MAY VARY FROM LIMITS SHOWN ON PLANS. CONTRACTOR TO PROVIDE SAWCUT AND PATCH WORK TO ACHIEVE POSITIVE DRAINAGE AND A SMOOTH TRANSITION TO EXISTING ASPHALT WITHIN SLOPES ACCEPTABLE TO THE ENGINEER AND WITHIN MUNICIPAL STANDARDS. CONTRACTOR SHALL PROVIDE ADDITIONAL SAWCUTTING AND PATCHING AT UTILITY WORK, CONNECTION POINTS TO EXISTING PAVEMENT AND FEATURES, ETC. THAT MAY NOT BE DELINEATED ON PLANS.
- ANY EXISTING MONITORING WELLS, CLEANOUTS, VALVE BOXES, ETC. TO BE PROTECTED AND TO REMAIN IN SERVICE. IF FEATURES EXIST, EXTEND OR LOWER TO FINAL SURFACE WITH LIKE KIND CAP WITH STANDARD CAST ACCESS LID WITH SAME MARKINGS. IN LANDSCAPED AREAS PROVIDE A CONCRETE COLLAR (18"x18"x6" THICK) AT ALL EXISTING AND PROPOSED MONITORING WELLS, CLEANOUTS, VALVE BOXES, ETC.
- OWNER TO APPROVE ALL PRIVATE CONCRETE FINISHING, JOINT PATTERNS AND COLORING REQUIREMENTS PRIOR TO CONSTRUCTION. SUBMIT JOINT LAYOUT PLAN TO OWNER FOR APPROVAL PRIOR TO CONSTRUCTION.
- PIPE LENGTHS AND HORIZONTAL CONTROL POINTS SHOWN ARE FROM CENTER OF STRUCTURES, END OF FLARED END SECTIONS, ETC. SEE STRUCTURE DETAILS FOR EXACT HORIZONTAL CONTROL LOCATION. CONTRACTOR IS RESPONSIBLE FOR ADJUSTING ACTUAL PIPE LENGTHS TO ACCOUNT FOR STRUCTURES AND LENGTH OF FLARED END SECTIONS.
- ALL SURPLUS MATERIALS, TOOLS, AND TEMPORARY STRUCTURES, FURNISHED BY THE CONTRACTOR, SHALL BE REMOVED FROM THE PROJECT SITE BY THE CONTRACTOR. ALL DEBRIS AND RUBBISH CAUSED BY THE OPERATIONS OF THE CONTRACTOR SHALL BE REMOVED, AND THE AREA OCCUPIED DURING CONSTRUCTION ACTIVITIES SHALL BE RESTORED TO ITS ORIGINAL CONDITION, WITHIN 48 HOURS OF PROJECT COMPLETION, UNLESS OTHERWISE DIRECTED BY THE MUNICIPALITY OR OWNER'S REPRESENTATIVE.
- THE CONTRACTOR IS REQUIRED TO PROVIDE AND MAINTAIN EROSION AND SEDIMENT CONTROL MEASURES IN ACCORDANCE WITH THE LOCAL JURISDICTION, THE STATE OF COLORADO, MILE HIGH FLOOD DISTRICT "URBAN STORM DRAINAGE CRITERIA MANUAL VOLUME 3", THE M-STANDARD PLANS OF THE COLORADO DEPARTMENT OF TRANSPORTATION, AND THE APPROVED EROSION CONTROL PLAN. JURISDICTIONAL AUTHORITY MAY REQUIRE THE CONTRACTOR TO PROVIDE ADDITIONAL EROSION CONTROL MEASURES AT THE CONTRACTOR'S EXPENSE DUE TO UNFORESEEN EROSION PROBLEMS OR IF THE PLANS DO NOT FUNCTION AS INTENDED. THE CONTRACTOR IS RESPONSIBLE FOR PROHIBITING SILT AND DEBRIS LAIDEN RUNOFF FROM LEAVING THE SITE, AND FOR KEEPING ALL PUBLIC AREAS FREE OF MUD AND DEBRIS. THE CONTRACTOR IS RESPONSIBLE FOR RE-ESTABLISHING FINAL GRADES AND FOR REMOVING ACCUMULATED SEDIMENTATION FROM ALL AREAS INCLUDING SWALES AND DETENTION/WATER QUALITY AREAS. CONTRACTOR SHALL REMOVE TEMPORARY EROSION CONTROL MEASURES AND REPAIR AREAS AS REQUIRED AFTER VEGETATION IS ESTABLISHED AND ACCEPTED BY OWNER AND MUNICIPALITY.
- PROTECT ALL TREES AND VEGETATION. PLACE CONSTRUCTION FENCING AT DRIP LINE OF TREES AND PLANTS NEAR THE WORK ZONE. DEEP WATER TREES WEEKLY. HAND EXCAVATION REQUIRED AT ROOT ZONES WHERE PROPOSED PAVING OR UTILITY WORK IS WITHIN DRIPLINE OF TREES.
- LOCATIONS OF CLEANOUTS, LIGHTS, SIGNAGE, JUNCTION BOXES, AND OTHER SIGNIFICANT SITE FEATURES TO BE STAKED FOR ENGINEER AND OR OWNER APPROVAL PRIOR TO WORK. CLEANOUTS, JUNCTION BOXES, AND ADJACENT GRADES TO BE RAISED ONE-HALF INCH AT ASPHALT/CONCRETE (OR 1" AT LANDSCAPING) TO PROVIDE POSITIVE DRAINAGE AWAY FROM FEATURES.
- SURVEY INFORMATION:
 17.1. TOPOGRAPHIC INFORMATION WAS PROVIDED BY EDWARD-JAMES SURVEYING, INC. SEE "2365-00 LSI TOPO JUNE 2022 V54.DWG" DATED 6/22/2022, UPDATED 8/5/2022. COORDINATE AND VERIFY ALL VERTICAL AND HORIZONTAL DATA SHOWN IN SURVEY AND REPORT ANY IRREGULARITIES OR DISCREPANCIES TO ENGINEER PRIOR TO CONSTRUCTION.
 17.2. BASIS OF ELEVATIONS: PROJECT ELEVATIONS ARE BASED ON A NGS SURVEY CONTROL MONUMENT POINT T 76 RESET. CONTROL POINT T 76 RESET IS A BENCHMARK BRASS MONUMENT SET IN CONCRETE ON THE SOUTH SIDE OF U.S. HIGHWAY 24 EAST OF COLORADO SPRINGS, HAVING A NAVD88 ELEVATION OF 6141.49 FT.
 17.3. COORDINATE DATUM: PROJECT COORDINATES ARE COLORADO STATE PLANE CENTRAL ZONE NAD 83 (2011) COORDINATES
 17.4. HORIZONTAL CONTROL INFORMATION: HORIZONTAL CONTROL COORDINATES ARE BASED ON THE REFERENCED SURVEY AND ARE PROVIDED BY THE FOLLOWING POINTS AS SHOWN ON THE PLANS:

CP-10	N1366229.22	E3225659.69	ELEV 6250.36	CP-40	N1367602.72	E3267269.52	ELEV 6501.14
CP-201	N1366966.87	E3225907.84	ELEV 6259.69	CP-70	N1367475.49	E3269900.76	ELEV 6487.64
CP-202	N1366434.26	E3226145.13	ELEV 6257.38	CP-80	N1355301.14	E3272427.81	ELEV 6353.97
CP-60	N1368003.86	E3233649.52	ELEV 6314.30	CP-50	N1351673.15	E3279000.96	ELEV 6215.87
CP-20	N1367210.75	E3258999.73	ELEV 6226.87	CP-51	N1351707.87	E3279076.41	ELEV 6214.70
CP-30	N1367113.69	E3263718.81	ELEV 6511.30				
- SURVEY UTILITY LOCATION INFORMATION PER THE SURVEYOR: SUBSURFACE UTILITIES ARE SHOWN IN APPROXIMATE HORIZONTAL AND VERTICAL LOCATIONS CONSISTENT WITH ASCE 38-02 QUALITY LEVEL "C" (INFORMATION OBTAINED BY SURVEYING AND PLOTTING VISIBLE ABOVE-GROUND UTILITY FEATURES AND BY USING PROFESSIONAL JUDGMENT IN CORRELATING THIS INFORMATION TO QUALITY LEVEL D; INFORMATION DERIVED FROM EXISTING RECORDS OR ORAL RECOLLECTIONS), AND BASED ON FIELD MEASUREMENTS PROVIDED BY THE OWNER AND THE CONTRACTOR. SUBSURFACE UTILITIES ARE NOT DEPICTED TO THE EXTENT SET FORTH IN ASCE 38-02 QUALITY LEVELS "A" (INFORMATION OBTAINED THROUGH THE NONDESTRUCTIVE EXPOSURE OF UNDERGROUND UTILITIES, AND ALSO PROVIDES THE TYPE, SIZE, CONDITION, MATERIAL AND OTHER CHARACTERISTICS OF UNDERGROUND FEATURES) OR "B" (INFORMATION OBTAINED BY THE APPLICATION OF APPROPRIATE SURFACE GEOPHYSICAL METHODS TO DETERMINE THE EXISTENCE AND HORIZONTAL POSITION OF VIRTUALLY ALL UTILITIES WITHIN THE PROJECT LIMITS. THE INFORMATION OBTAINED IN THIS MANNER IS SURVEYED TO PROJECT CONTROL). TO THE EXTENT DEEMED NECESSARY FOR THE PROTECTION OF PERSONS AND PROPERTY, POTHOLING OR OTHER PRECISE MAPPING SHOULD BE COMPLETED TO CONFIRM THE EXACT LOCATION OF ANY SUBSURFACE UTILITIES. NOTIFY OWNER AND ENGINEER WITH ALL UTILITY INFORMATION PRIOR TO CONSTRUCTION. VISIT [HTTPS://WWW.FHWA.DOT.GOV/PROGRAMADMIN/SUEINDEX.CFM](https://www.fhwa.dot.gov/programadmin/sueindex.cfm) FOR MORE INFORMATION.
- THE CONTRACTOR AT THE CONTRACTORS EXPENSE SHALL FURNISH THE OWNER AND ENGINEER OF RECORD A COMPLETE SET OF CONSTRUCTION RECORD DRAWINGS ("AS-BUILTS") FOR THE CONSTRUCTED IMPROVEMENTS. THE AS-BUILT SET SHALL SHOW SUFFICIENT DIMENSION TIES TO PERMANENT SURFACE FEATURES OR NOTHING/EASTING POINTS FOR ALL BURIED FACILITIES TO ALLOW FOR FUTURE LOCATING. THE AS-BUILT SET SHALL SHOW AS-BUILT CONTOURS AND ELEVATIONS OF ASPHALT AND CONCRETE FLATWORK, FLOWLINES, GRADE BREAKS, STAIRS, CROSS-SLOPES, HIGH AND LOW POINTS, AND ADDITIONAL ELEVATIONS TO DEMONSTRATE IMPROVEMENTS WERE CONSTRUCTED PER PLANS. THE AS-BUILT SET SHALL SHOW ELEVATIONS OF ALL DETENTION/WATER QUALITY FACILITIES, INCLUDING BUT NOT LIMITED TO BERMS, SPILLWAYS, BASIN BOTTOM, PIPE INVERTS, AND CONTROL STRUCTURE FEATURES (AS SURVEYED AND STAMPED BY A CERTIFIED P.L.S.). THE AS-BUILT SET SHALL ALSO INCLUDE ELEVATIONS OF MANHOLES, PIPES, INLETS, GRATES, AND SIZES OF ALL UTILITIES. THE AS-BUILT SET SHALL SHOW ANY AND ALL VARIATIONS FROM THE APPROVED PLAN. ENGINEER WILL PRODUCE FINAL RECORD DRAWINGS.



DESIGN LEGEND



SURVEY LEGEND



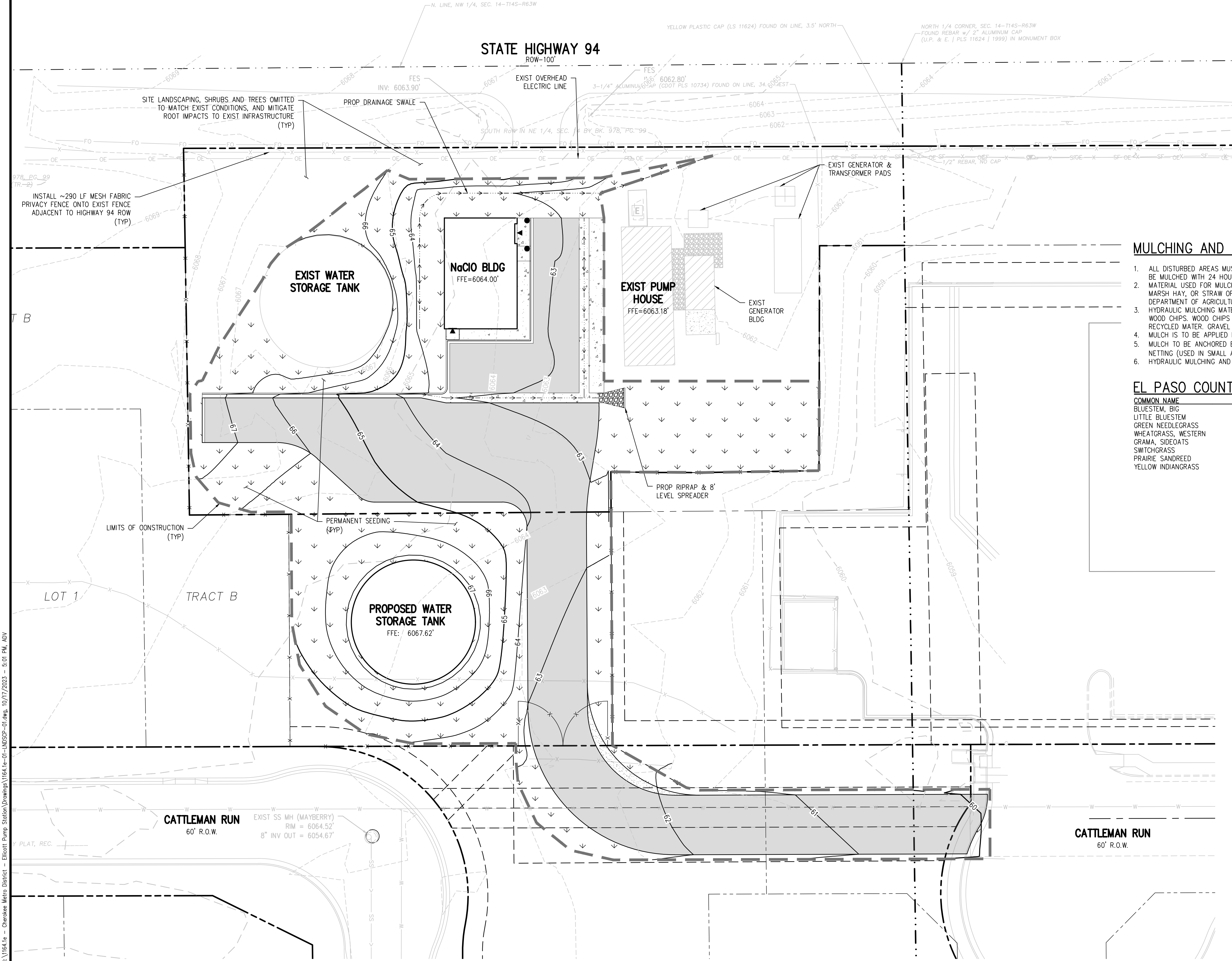
NOTE: SHADED ITEMS REPRESENT EXIST FEATURES

ABBREVIATIONS

AASHTO	AMERICAN ASSOC. OF STATE HIGHWAY AND TRANSPORTATION OFFICIALS	IN	INLET
ABAN	ABANDON	INSUL	INSULATION
AC	ASPHALTIC CONCRETE PAVING	INVT	INVERT
ADDL	ADDITIONAL	IRR	IRRIGATION
ADDM	ADDENDUM	JTS	JOINTS
ADJ	ADJUSTABLE	KO	KNOCKOUT
AL	ALUMINUM	KPL	KICK PLATE
ALT	ALTERNATE	KWY	KEYWAY
AMT	AMOUNT	L	LEFT OR LITER
APPROX	APPROXIMATE	LSCAPE	LANDSCAPE(NG)
ARCH	ARCHITECT(URAL)	LF	LINEAR FOOT
ARV	AIR RELIEF VALVE	LP	LOW POINT
ASTM	AMERICAN SOCIETY FOR TESTING AND MATERIALS	LT	LIGHT
ASPH	ASPHALT	LWL	LOW WATER LEVEL
ASSY	ASSEMBLY	MAINT	MAINTENANCE
ASYM	ASYMMETRICAL	MAN	MANUAL
AUTO	AUTOMATIC	MATL	MATERIAL
AVG	AVERAGE	MAX	MAXIMUM
AWWA	AMERICAN WATER WORKS ASSOC.	ME	MATCH EXISTING
BC	BACK OF CURB	MECH	MECHANICAL
BFV	BUTTERFLY VALVE	MFR	MANUFACTURER
BG	FINISHED GRADE ADJACENT TO BOTTOM OF WALL	MH	MANHOLE
BLDG	BUILDING	MIN	MINIMUM
BLK	BLOCK	MISC	MISCELLANEOUS
BM	BENCHMARK	MJ	MECHANICAL JOINT
BMP	BEST MANAGEMENT PRACTICE	N	NORTH
BS	BACKSIGHT	NA	NOT APPLICABLE
BOS	BOTTOM OF STEP	NIC	NOT IN CONTRACT
BOT	BOTTOM	NPT	NATIONAL PIPE THREAD
BSMT	BASEMENT	NTS	NOT TO SCALE
BVCE	BEGIN VERTICAL CURVE ELEVATION	OS	OFFSET
BVCS	BEGIN VERTICAL CURVE STATION	OC	ON CENTER
BW	BOTTOM OF WALL	OD	OUTSIDE DIAMETER
CB	CATCH BASIN	OPP	OPPOSITE
CCW	COUNTER CLOCKWISE	OPT	OPTIONAL
CDOT	COLORADO DEPARTMENT OF TRANSPORTATION	PC	POINT OF CURVATURE
CIP	CAST IRON PIPE	PCO	PRESSURE CLEAN OUT
CJ	CONSTRUCTION JOINT	PCR	POINT OF CURVE RETURN
CL	CENTER LINE OR CHAIN LINK	PI	POINT OF INTERSECTION
CLR	CLEAR	PIV	POINT OF VERTICAL INTERSECTION
CMP	CORRUGATED METAL PIPE	PL	PROPERTY LINE
CMU	CONCRETE MASONRY UNIT	PE	POLYETHYLENE
CO	CLEANOUT	PREFAB	PREFABRICATED
CONC	CONCRETE	PRELIM	PRELIMINARY
CONST	CONSTRUCTION	PREP	PREPARATION
CONT	CONTINUOUS(ATION)	PROP	PROPOSED
COR	CORNER	PRV	PRESSURE REDUCING VALVE OR PRESSURE RELIEF VALVE
CR	CONCENTRIC REDUCER	PSF	POUNDS PER SQUARE FOOT
CTR	CENTER	PSI	POUNDS PER SQUARE INCH
CY	CUBIC YARDS	PV	PLUG VALVE
DEMO	DEMOLITION	PVC	POLYVINYL CHLORIDE OR POINT OF VERTICAL CURVATURE
DIA	DIAMETER	PVMT	PAVEMENT
DIAG	DIAGONAL	QTY	QUANTITY
DIP	DUCTILE IRON PIPE	E	EAST
DOM	DOMESTIC	EA	EACH
DN	DOWN	ECC	ECCENTRIC
DR	DRAIN	EJ	EXPANSION JT
DWG	DRAWING	EL	ELEVATION
DWL	DOWEL	ELB	ELBOW
E	EAST	ELEC	ELECTRICAL
EA	EACH	ENGR	ENGINEER
ECC	ECCENTRIC	EOP	EDGE OF PAVEMENT
EJ	EXPANSION JT	EQ	EQUAL
EL	ELEVATION	EQUIP	EQUIPMENT
ELB	ELBOW	EQUIV	EQUIVALENT
ELEC	ELECTRICAL	ESMT	EASEMENT
ENGR	ENGINEER	EST	ESTIMATE
EOP	EDGE OF PAVEMENT	EVCE	END VERTICAL CURVE ELEVATION
EQ	EQUAL	EVCS	END VERTICAL CURVE STATION
EQUIP	EQUIPMENT	EW	EACH WAY
EQUIV	EQUIVALENT	EXP JT	EXPANSION JOINT
ESMT	EASEMENT	EXST	EXISTING
EST	ESTIMATE	FND	FOUNDATION
EVCE	END VERTICAL CURVE ELEVATION	FES	FLARED END SECTION
EVCS	END VERTICAL CURVE STATION	FF	FINISH FLOOR
EW	EACH WAY	FG	FINISH GRADE
EXP JT	EXPANSION JOINT	FH	FIRE HYDRANT
EXST	EXISTING	FL	FLOW LINE
FND	FOUNDATION	FN	FENCE
FES	FLARED END SECTION	FOC	FACE OF CONCRETE
FF	FINISH FLOOR	FPM	FEET PER MINUTE
FG	FINISH GRADE	FPS	FEET PER SECOND
FH	FIRE HYDRANT	FT	FEET
FL	FLOW LINE	FTG	FOOTING OR FITTING
FN	FENCE	G	GAS
FOC	FACE OF CONCRETE	GA	GAUGE
FPM	FEET PER MINUTE	GAL	GALLON
FPS	FEET PER SECOND	GALV	GALVANIZED
FT	FEET	GCO	GRADE CLEANOUT
FTG	FOOTING OR FITTING	GP	GALVANIZED IRON PIPE
G	GAS	GND	GROUND
GA	GAUGE	GPD	GALLONS PER DAY
GAL	GALLON	GPM	GALLONS PER MINUTE
GALV	GALVANIZED	GR	GRATE
GCO	GRADE CLEANOUT	GRTG	GRATING
GP	GALVANIZED IRON PIPE	GSP	GALVANIZED STEEL PIPE
GND	GROUND	GV	GATE VALVE
GPD	GALLONS PER DAY	H	HIGH
GPM	GALLONS PER MINUTE	HB	HOSE BIB
GR	GRATE	HE	HORIZONTAL ELLIPTICAL
GRTG	GRATING	HDWL	HEADWALL
GSP	GALVANIZED STEEL PIPE	HDRL	HAND RAIL
GV	GATE VALVE	HORIZ	HORIZONTAL
H	HIGH	HP	HIGH POINT
HB	HOSE BIB	HR	HOUR
HE	HORIZONTAL ELLIPTICAL	HVAC	HEATING, VENTILATION, AIR CONDITIONING
HDWL	HEADWALL	HWY	HIGHWAY
HDRL	HAND RAIL	HWL	HIGH WATER LINE
HORIZ	HORIZONTAL	HYD	HYDRANT
HP	HIGH POINT	INCL	INCLUDED
HR	HOUR	ID	INSIDE DIAMETER
HVAC	HEATING, VENTILATION, AIR CONDITIONING	IN	INLET
HWY	HIGHWAY	INSUL	INSULATION
HWL	HIGH WATER LINE	INVT	INVERT
HYD	HYDRANT	IRR	IRRIGATION
INCL	INCLUDED	JTS	JOINTS
ID	INSIDE DIAMETER	KO	KNOCKOUT
		KPL	KICK PLATE
		KWY	KEYWAY
		L	LEFT OR LITER
		LSCAPE	LANDSCAPE(NG)
		LF	LINEAR FOOT
		LP	LOW POINT
		LT	LIGHT
		LWL	LOW WATER LEVEL
		MAINT	MAINTENANCE
		MAN	MANUAL
		MATL	MATERIAL
		MAX	MAXIMUM
		ME	MATCH EXISTING
		MECH	MECHANICAL
		MFR	MANUFACTURER
		MH	MANHOLE
		MIN	MINIMUM
		MISC	MISCELLANEOUS
		MJ	MECHANICAL JOINT
		N	NORTH
		NA	NOT APPLICABLE
		NIC	NOT IN CONTRACT
		NPT	NATIONAL PIPE THREAD
		NTS	NOT TO SCALE
		OS	OFFSET
		OC	ON CENTER
		OD	OUTSIDE DIAMETER
		OPP	OPPOSITE
		OPT	OPTIONAL
		PC	POINT OF CURVATURE
		PCO	PRESSURE CLEAN OUT
		PCR	POINT OF CURVE RETURN
		PI	POINT OF INTERSECTION
		PIV	POINT OF VERTICAL INTERSECTION
		PL	PROPERTY LINE
		PE	POLYETHYLENE
		PREFAB	PREFABRICATED
		PRELIM	PRELIMINARY
		PREP	PREPARATION
		PROP	PROPOSED
		PRV	PRESSURE REDUCING VALVE OR PRESSURE RELIEF VALVE
		PSF	POUNDS PER SQUARE FOOT
		PSI	POUNDS PER SQUARE INCH
		PV	PLUG VALVE
		PVC	POLYVINYL CHLORIDE OR POINT OF VERTICAL CURVATURE
		PVMT	PAVEMENT
		QTY	QUANTITY
		R	RIGHT
		RAD	RADIUS
		RCP	REINFORCED CONCRETE PIPE
		RD	ROOF DRAIN
		RE	REFERENCE
		RECT	RECTANGULAR
		REINF	REINFORCE (D) (ING) (MENT)
		REQD	REQUIRED
		ROW	RIGHT OF WAY
		SAN	SANITARY
		SC	SAWCUT
		SD	STORM DRAIN
		SECT	SECTION
		SPD	STANDARD PROCTOR DENSITY
		SPEC	SPECIFICATION
		SQ	SQUARE
		SQ IN	SQUARE INCH
		SQ FT	SQUARE FOOT
		SQ YD</	

NORTH ROW IN SEC. 11 BY BK. 978, PG. 151

STATE HIGHWAY 94
ROW=100'



LANDSCAPING NOTE:
LANDSCAPING IS INTENDED TO BE MINIMAL EXCEPT FOR PREVENTING EROSION. DO NOT REMOVE THE NATURE OF THE FACILITY, TREES AND SHRUBS ARE KNOWN TO INTERFERE WITH OPERATION, ROOTS AND MAINTENANCE NEEDS CREATE ISSUES FOR OPERATIONS EFFORTS, PIPING, AND INFRASTRUCTURE, THEREFORE THE DISTRICT PREFERS TO KEEP ALL VEGETATION TO A MINIMUM.

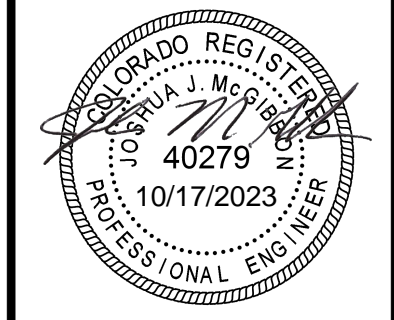
MULCHING AND SEEDING NOTES FOR EL PASO COUNTY

1. ALL DISTURBED AREAS MUST BE MULCHED WITHIN 21 DAYS AFTER FINAL GRADE AND SEEDING AREAS ARE TO BE MULCHED WITH 24 HOURS AFTER SEEDING.
2. MATERIAL USED FOR MULCH CAN BE CERTIFIED CLEAN, WEED- AND SEED-FREE LONG STEMMED FIELD OR MARSH HAY, OR STRAW OF OATS, BARLEY, WHEAT, RYE OR TRITICALE CERTIFIED BY THE COLORADO DEPARTMENT OF AGRICULTURE WEED FREE FORAGE CERTIFICATION PROGRAM.
3. HYDRAULIC MULCHING MATERIAL SHALL CONSIST OF VIRGIN WOOD FIBER MANUFACTURED FROM CLEAN WHOLE WOOD CHIPS. WOOD CHIPS CANNOT CONTAIN ANY GROWTH OR GERMINATION INHIBITORS OR BE PRODUCED FROM RECYCLED WOOD. GRAVEL CAN ALSO BE USED.
4. MULCH IS TO BE APPLIED EVENLY AT THE RATE OF 2 TONS PER ACRE.
5. MULCH TO BE ANCHORED EITHER BY CRIMPING (TUCKING MULCH FIBERS 4 INCHES INTO THE SOIL), USING NETTING (USED IN SMALL AREAS WITH STEEP SLOPES), OR WITH TACKIFIER.
6. HYDRAULIC MULCHING AND TACKIFIERS ARE NOT TO BE USED IN THE PRESENCE OF FREE SURFACE WATER.

EL PASO COUNTY CONSERVATION DISTRICT SHOTGUN MIX

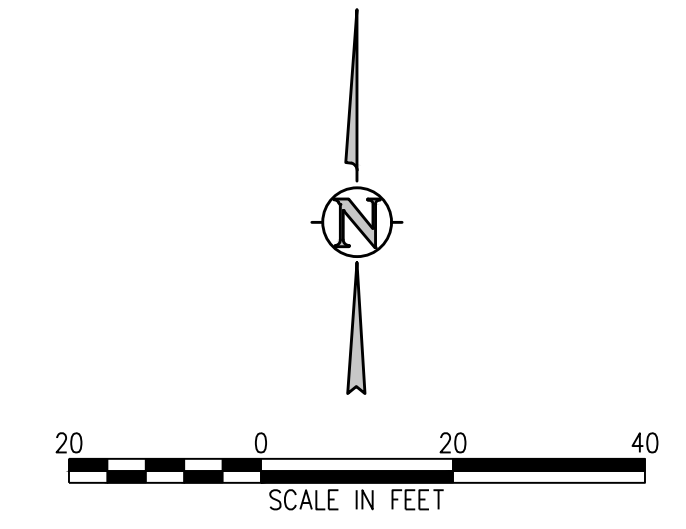
COMMON NAME	RECOMMENDED VARIETY	% OF SEED MIX	PLS/ACRE
BLUESTEM, BIG	KAW, BISON, CHAMP	20	1.08
LITTLE BLUESTEM	SCHIZACHYRIUM SCOPARIUM	10	0.12
GREEN NEEDLEGRASS	L000RM	10	0.48
WHEATGRASS, WESTERN	ARRIBA, BARTON	20	1.60
GRAMA, SIDE-OATS	VAUGHN, BUTTE, EL RENO, NINER	10	0.46
SWITCHGRASS	BLACKWELL, GREENVILLE	10	0.20
PRAIRIE SANDREED	GOSHEN, PRONGHORN	10	0.32
YELLOW INDIANGRASS	CHEYENNE, HOLT, LLANO	10	0.51

NO.	DATE	DES'D	DWN	REVISION DESCRIPTION



DESIGNED BY: RAH/NAS
DRAWN BY: ADV
CHECKED BY: JJM
JOB #: 1164.1e
DATE: OCTOBER, 2023
© JVA, INC.

ELLCOTT CHLORINATOR UPGRADES
CHEROKEE METROPOLITAN DISTRICT
EL PASO COUNTY, COLORADO
LANDSCAPING PLAN



N:\1164.1e - Cherokee Metro District - Elicott Pump Station Drawings\1164.1e-01-LANDSCAP-01.dwg, 10/17/2023 - 5:01 PM, ADV