





**LEGAL DESCRIPTION - STONEBRIDGE FILING 4:**

ROYAL LARK ENTERPRISES, TRACT C1, INC. (BAKERS DEVELOPMENT, INC., THEODORE TOMAS, PRESIDENT), BEING THE OWNERS OF THE FOLLOWING DESCRIBED TRACTS OF LAND:

TWO PARCELS OF LAND LOCATED IN A PORTION OF SECTION 29 AND 30, BOTH IN TOWNSHIP 22 SOUTH, RANGE 64 WEST OF THE 6TH PRINCIPAL MERIDIAN, EL PASO COUNTY, COLORADO, MORE PARTICULARLY DESCRIBED AS FOLLOWS:

PARCEL A:

BEGINNING AT A POINT ON THE SOUTHEASTERN MOST CORNER OF TRACT D OF STONEBRIDGE FILING NO. 1 AT MERIDIAN RANCH, RECORDED WITH RECEIPTION NO. 21573582 IN THE RECORDS OF EL PASO COUNTY;

THE FOLLOWING SINGL

1. THENCE N12°42'24"E A DISTANCE OF 390.00 FEET;
2. THENCE S89°02'15"E A DISTANCE OF 300.00 FEET;
3. THENCE N60°02'20"E A DISTANCE OF 300.00 FEET;
4. THENCE N42°00'00"E A DISTANCE OF 300.00 FEET;
5. THENCE N42°00'00"E A DISTANCE OF 300.00 FEET;
6. THENCE N42°00'00"E A DISTANCE OF 300.00 FEET;
7. THENCE N42°00'00"E A DISTANCE OF 300.00 FEET;
8. THENCE S12°10'07"W A DISTANCE OF 800.00 FEET;
9. THENCE S33°47'19"E A DISTANCE OF 600.00 FEET;
10. THENCE S89°56'56"E A DISTANCE OF 123.00 FEET;
11. THENCE S89°56'56"E A DISTANCE OF 60.00 FEET;
12. THENCE S46°16'15"E A DISTANCE OF 60.00 FEET;
13. THENCE S46°16'15"E A DISTANCE OF 60.00 FEET;
14. THENCE S46°16'15"E A DISTANCE OF 60.00 FEET;
15. THENCE S46°16'15"E A DISTANCE OF 60.00 FEET;
16. THENCE S46°16'15"E A DISTANCE OF 60.00 FEET;
17. THENCE S46°16'15"E A DISTANCE OF 60.00 FEET;
18. THENCE S46°16'15"E A DISTANCE OF 60.00 FEET;
19. THENCE S46°16'15"E A DISTANCE OF 60.00 FEET;
20. THENCE S46°16'15"E A DISTANCE OF 60.00 FEET;
21. THENCE S46°16'15"E A DISTANCE OF 60.00 FEET;
22. THENCE S46°16'15"E A DISTANCE OF 60.00 FEET;
23. THENCE S46°16'15"E A DISTANCE OF 60.00 FEET;
24. THENCE S46°16'15"E A DISTANCE OF 60.00 FEET;
25. THENCE S46°16'15"E A DISTANCE OF 60.00 FEET;

THE ABOVE PARCEL OF LAND CONTAINS 40.435 ACRES, MORE OR LESS.

PARCEL B:

BEGINNING AT A POINT ON THE SOUTHERN LINE OF TRACT C OF STONEBRIDGE FILING NO. 3 AT MERIDIAN RANCH, RECORDED WITH RECEIPTION NO. \_\_\_\_\_ IN THE RECORDS OF EL PASO COUNTY;

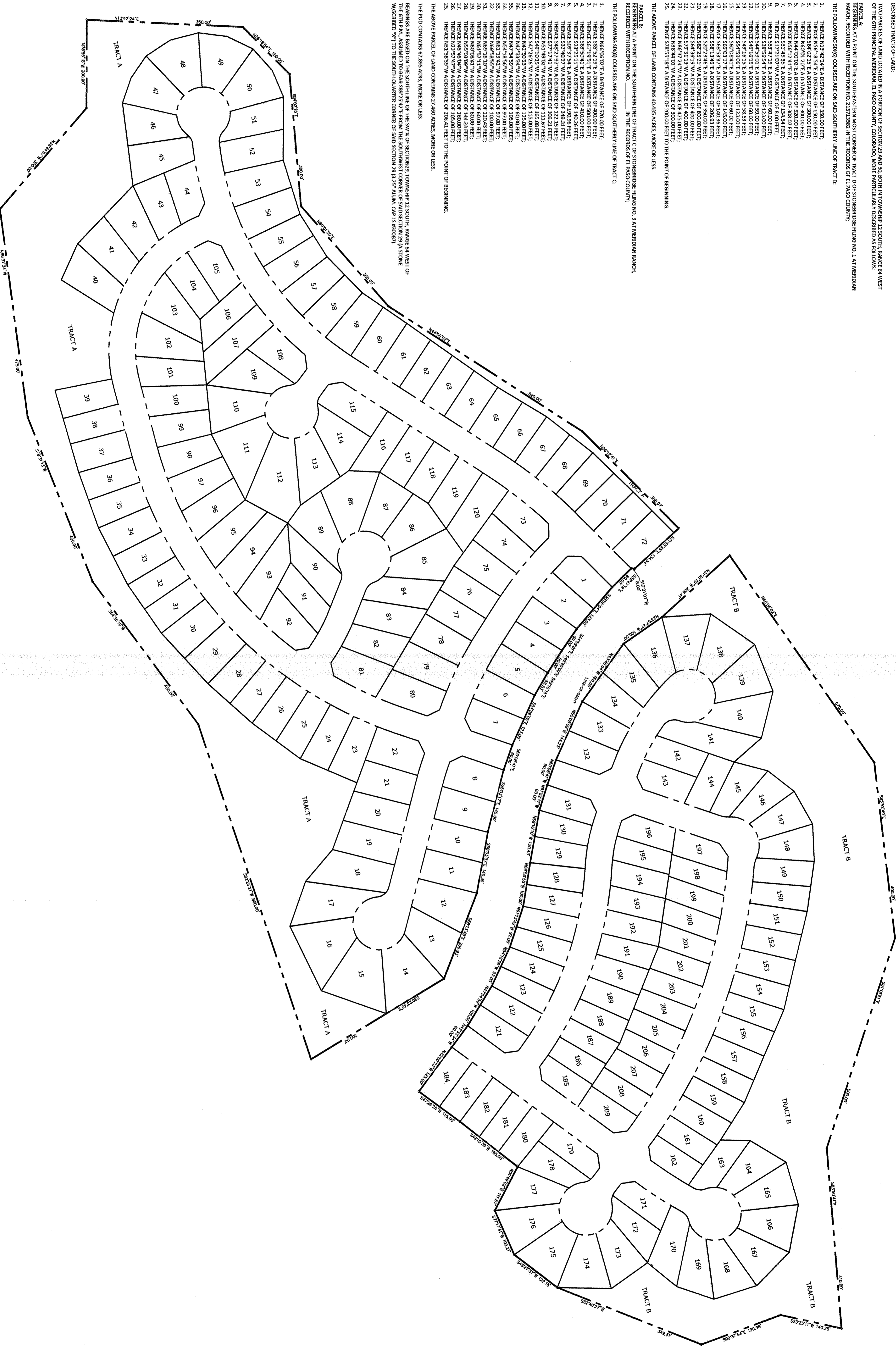
THE FOLLOWING SINGL

1. THENCE N6°06'02"E A DISTANCE OF 570.00 FEET;
2. THENCE S85°52'19"E A DISTANCE OF 400.00 FEET;
3. THENCE S81°19'51"E A DISTANCE OF 500.00 FEET;
4. THENCE S29°23'11"W A DISTANCE OF 140.26 FEET;
5. THENCE S29°23'11"W A DISTANCE OF 140.26 FEET;
6. THENCE S29°23'11"W A DISTANCE OF 140.26 FEET;
7. THENCE S29°23'11"W A DISTANCE OF 140.26 FEET;
8. THENCE S29°23'11"W A DISTANCE OF 140.26 FEET;
9. THENCE S29°23'11"W A DISTANCE OF 140.26 FEET;
10. THENCE S29°23'11"W A DISTANCE OF 140.26 FEET;
11. THENCE S29°23'11"W A DISTANCE OF 140.26 FEET;
12. THENCE S29°23'11"W A DISTANCE OF 140.26 FEET;
13. THENCE S29°23'11"W A DISTANCE OF 140.26 FEET;
14. THENCE S29°23'11"W A DISTANCE OF 140.26 FEET;
15. THENCE S29°23'11"W A DISTANCE OF 140.26 FEET;
16. THENCE S29°23'11"W A DISTANCE OF 140.26 FEET;
17. THENCE S29°23'11"W A DISTANCE OF 140.26 FEET;
18. THENCE S29°23'11"W A DISTANCE OF 140.26 FEET;
19. THENCE S29°23'11"W A DISTANCE OF 140.26 FEET;
20. THENCE S29°23'11"W A DISTANCE OF 140.26 FEET;
21. THENCE S29°23'11"W A DISTANCE OF 140.26 FEET;
22. THENCE S29°23'11"W A DISTANCE OF 140.26 FEET;
23. THENCE S29°23'11"W A DISTANCE OF 140.26 FEET;
24. THENCE S29°23'11"W A DISTANCE OF 140.26 FEET;
25. THENCE S29°23'11"W A DISTANCE OF 140.26 FEET;

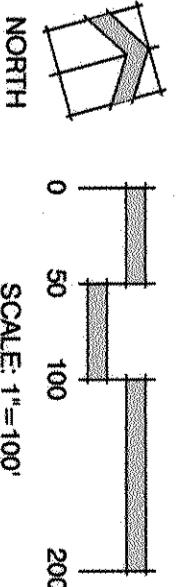
THE ABOVE PARCEL OF LAND CONTAINS 27.460 ACRES, MORE OR LESS.

THE PUD CONTAINS 67.885 ACRES, MORE OR LESS.

BEARINGS ARE BASED ON THE SOUTHERN LINE OF THE S.W. 1/4 OF SECTION 29, TOWNSHIP 22 SOUTH, RANGE 64 WEST OF THE 6TH P.M., ASSUMED TO BEAR S89°23'22"E FROM THE SOUTHWEST CORNER OF SAID SECTION 29 (A STONE W/SCRIBED "X") TO THE SOUTH QUARTER CORNER OF SAID SECTION 29 (3.25' ALUM. CAP. IS 89087).

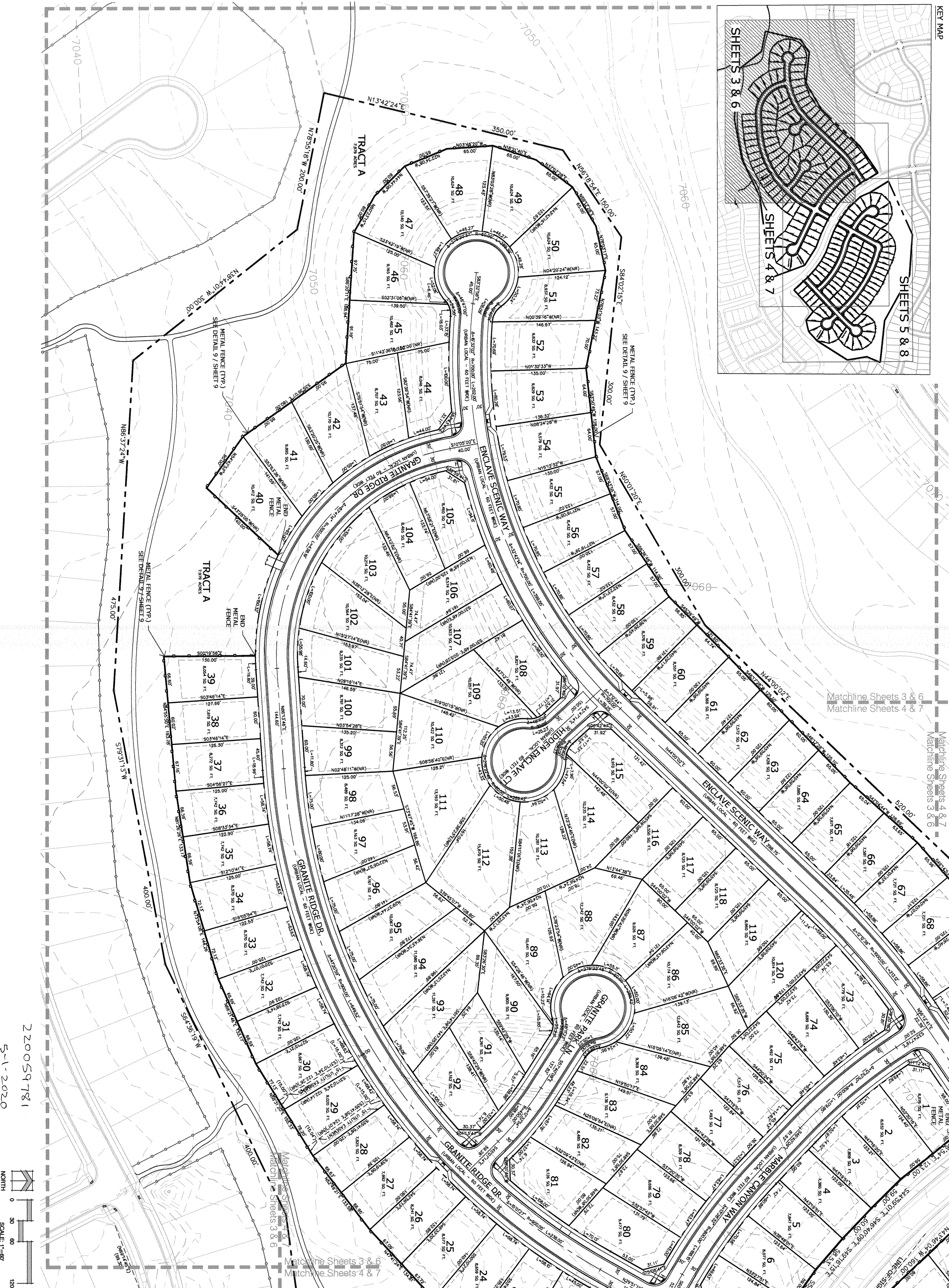
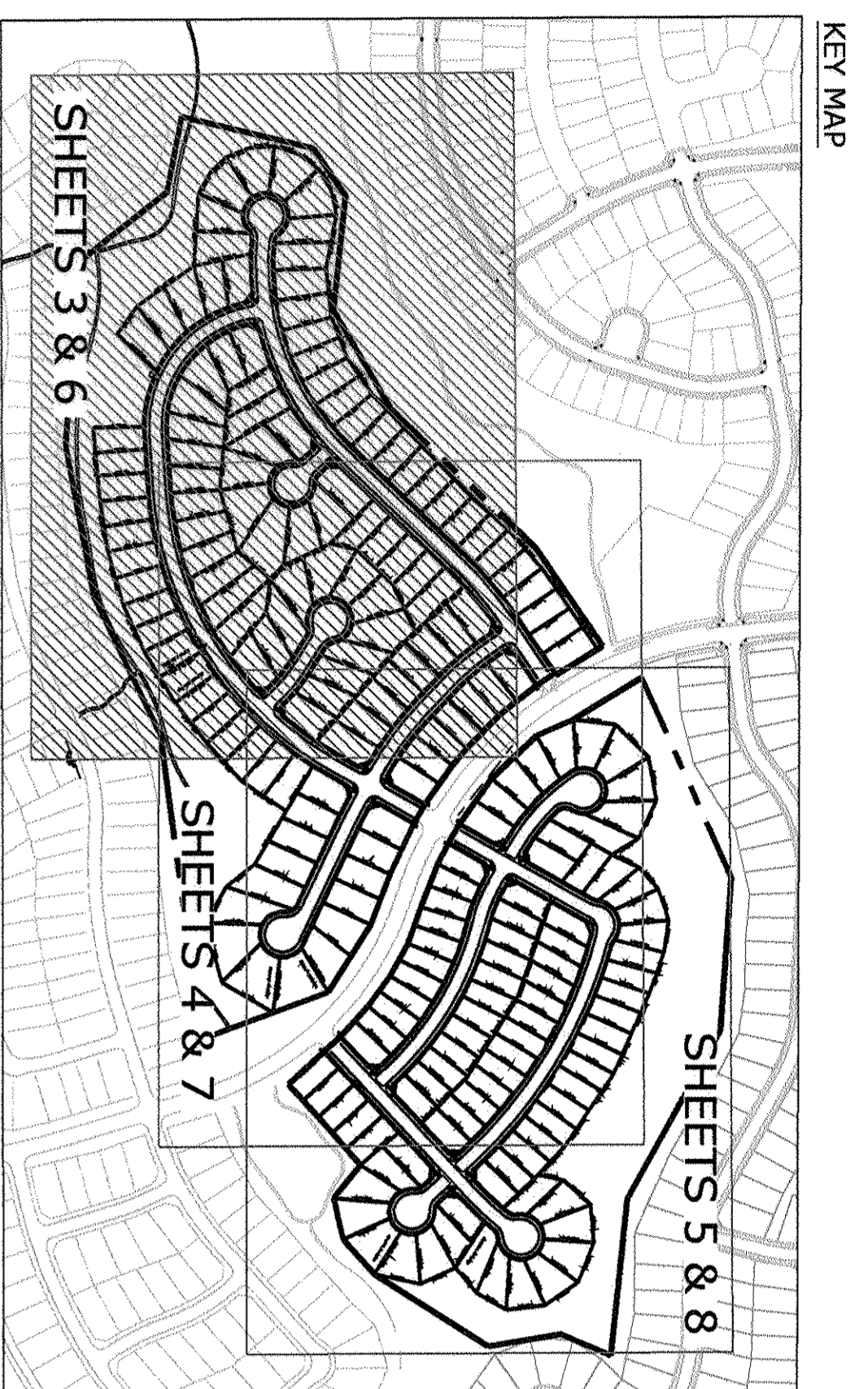


220059781  
5-1-2020

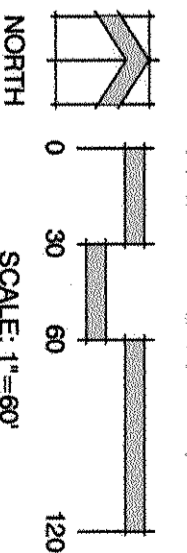


<p>PLAN FILE #</p> <p>SHEET NUMBER</p> <p style="font-size: 2em; font-weight: bold;">2</p> <p>OF 15</p> <p>PCD# PUDSP-18-003</p>	<p>SHEET TITLE</p> <p style="text-align: center; font-weight: bold;">LEGAL PLAN</p>	<p>ISSUE / REVISION</p>	<p>ISSUE INFO</p> <p>DATE: _____</p> <p>BY: _____</p> <p>DESCRIPTION: _____</p> <p>7/20/2018 JBS Per County Comments</p> <p>8/20/2018 MS Per County Comments</p>	<p>SEAL</p>	<p>PROJECT INFO</p> <p>DATE: January 4, 2018</p> <p>PROJECT NO: _____</p> <p>PREPARED BY: B. Swanson</p>	<p>IN ASSOCIATION WITH</p> <p style="font-size: 1.2em; font-weight: bold;">Stonebridge Filing 4 At Meridian Ranch</p> <p>PUD Development Plan / Preliminary Plan</p>	<p>PLANNER / LANDSCAPE ARCHITECT</p> <p style="text-align: center; font-weight: bold;">NRS</p> <p>N.R.S. Inc. 619 N. Cascade Ave., Ste. 200 Colorado Springs, CO 80903 Tel: 719.471.0073 Fax: 719.471.0267 www.nrscolorado.com © 2012. All Rights Reserved.</p>
--	---	-------------------------	--	-------------	--	--	---





220059781  
5-1-2020



PLAN FILE # SHEET NUMBER SHEET TITLE WEST & SOUTH SITE PLAN	DATE: 7/20/2018 BY: JMS PERMITTED: Per County COMMENTS: Per County 8/20/2018 MS	ISSUE / REVISION ISSUE INFO SEAL	PROJECT INFO DATE: January 4, 2018 PROJECT MGR: B. Swenson PREPARED BY: B. Swenson	PUD Development Plan / Preliminary Plan	ASSOCIATION WITH	PLANNER / LANDSCAPE ARCHITECT N.B.S. Inc. 619 N. Cascade Ave., Ste. 200 Colorado Springs, CO 80903 Tel: 719.471.0073 Fax: 719.471.0267 www.nbscolorado.com © 2017, All Rights Reserved.	Land Planning Landscape Architecture Urban Design





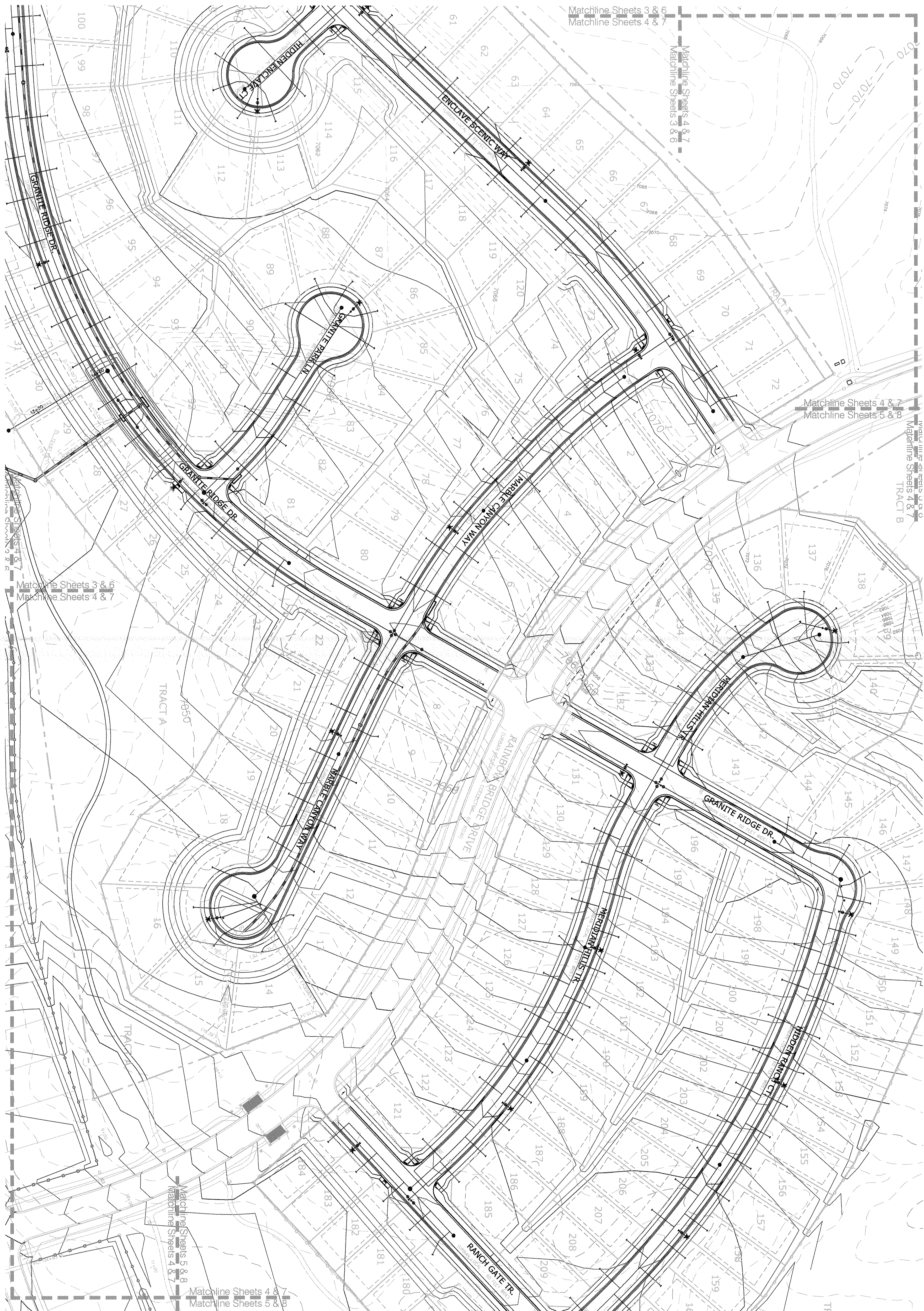




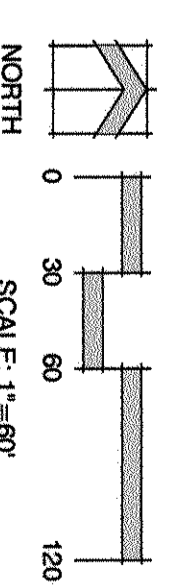


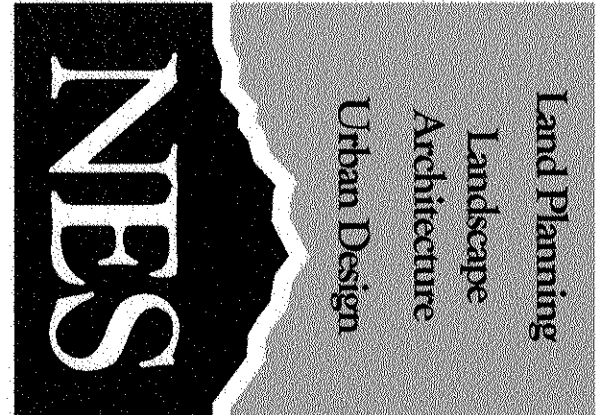






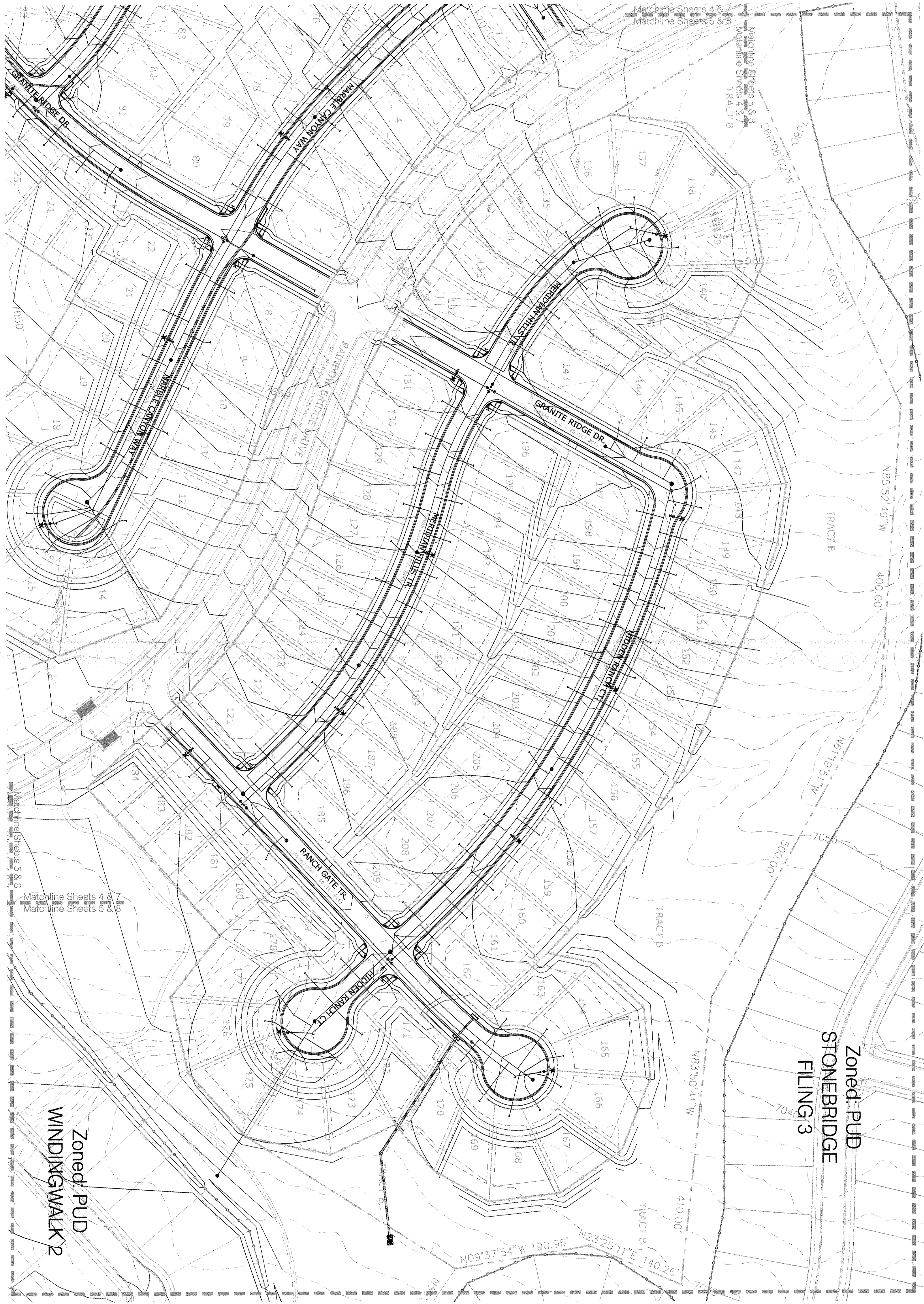
220059181  
5-1-2020



PLAN FILE # PCD # PUDSP-18-003	SHEET NUMBER 7 OF 15	SHEET TITLE <b>CENTER PLAN UTILITIES &amp; GRADING</b>	ISSUE / REVISION	ISSUE INFO	SEAL	PROJECT INFO DATE: January 4, 2018 PROJECT NBR: B. Swenson PREPARED BY: B. Swenson	IN ASSOCIATION WITH	PLANNER / LANDSCAPE ARCHITECT N.T.S. Inc. 619 N. Cascade Ave., Ste. 200 Colorado Springs, CO 80903 Tel: 719.471.0073 Fax: 719.471.0267 www.ntscolorado.com © 2012. All Rights Reserved.	 <p>Land Planning Landscape Architecture Urban Design</p>
-----------------------------------	----------------------------	---	------------------	------------	------	---	---------------------	--	--



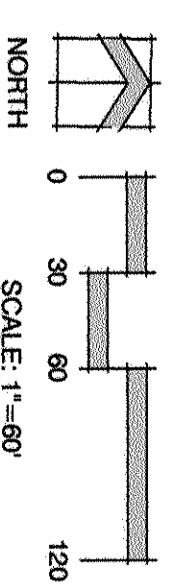
Matchline Sheets 4 & 7  
Matchline Sheets 5 & 8



Zoned: PUD  
STONEBRIDGE  
FILING 3

Zoned: PUD  
WINDING WALK 2

Z220059781  
5-1-2020



Land Planning  
Landscape  
Architecture  
Urban Design

N.E.S., Inc.  
619 N. Cascade Ave., Ste. 200  
Colorado Springs, CO 80903  
Tel. 719.471.0073  
Fax 719.471.0267  
www.nescolorado.com  
© 2012. All Rights Reserved.

Stonebridge  
Filing 4  
At Meridian  
Ranch

PUD Development Plan /  
Preliminary Plan

PROJECT INFO  
DATE: January 4, 2018  
PROJECT NO: [blank]  
PREPARED BY: B. Svenson

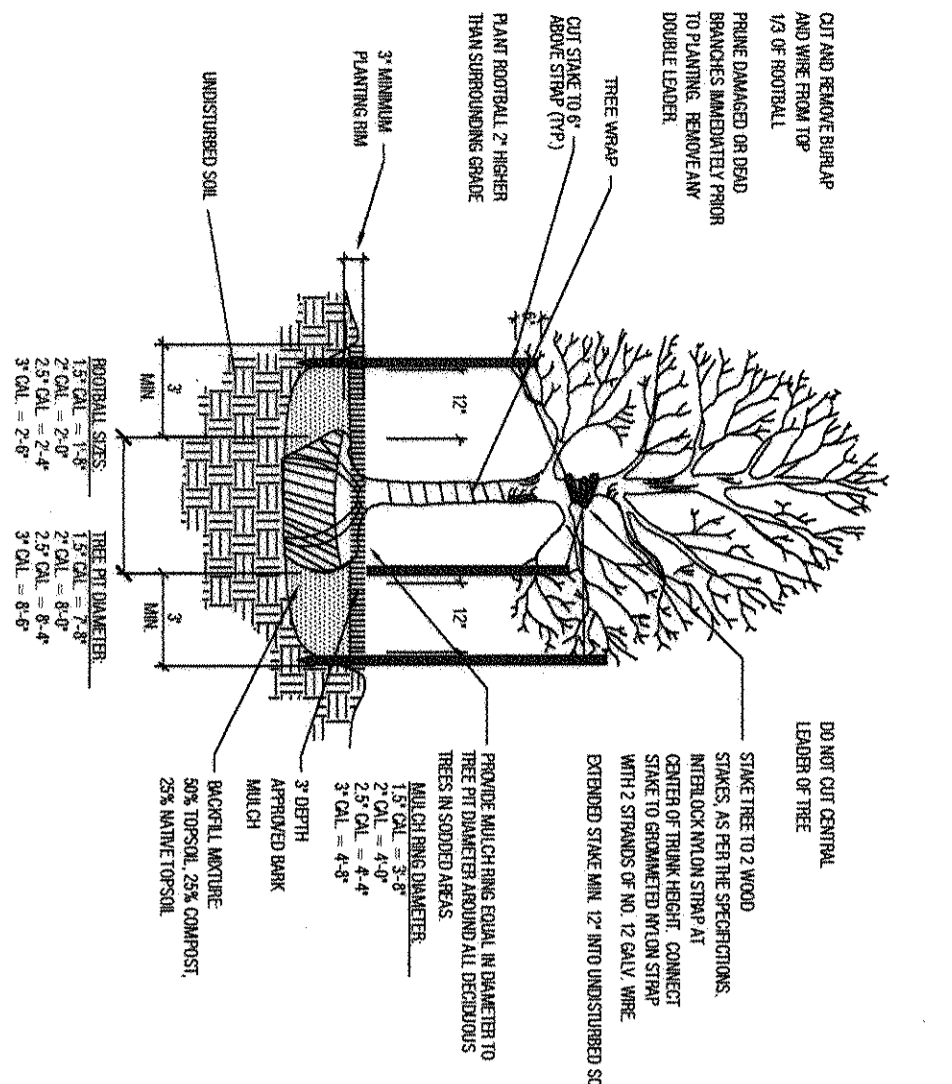
DATE	BY	DESCRIPTION
7/20/2018	BJS	Per County Comments
8/20/2018	MS	Per County Comments

EAST & NORTH  
UTILITIES & GRADING

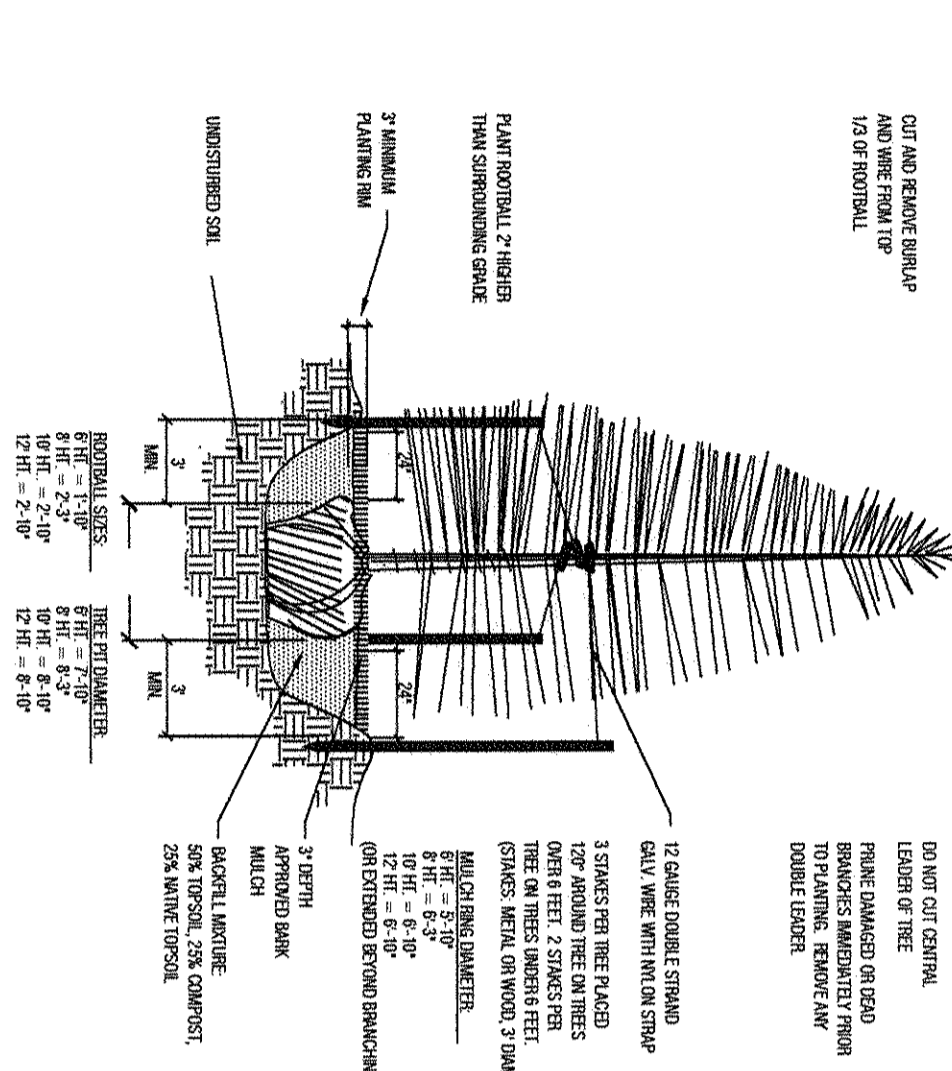
8  
OF  
15

PLAN FILE #  
PCD # PUDSP-18-003

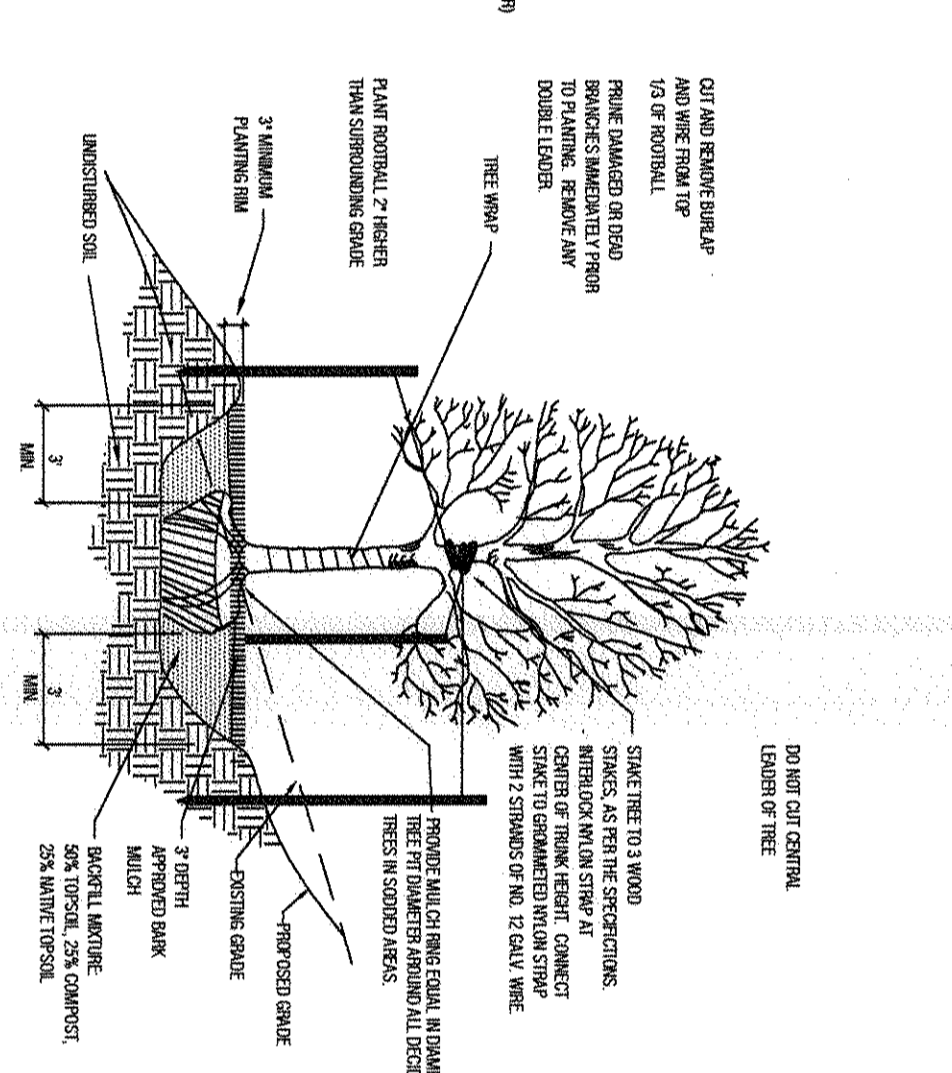




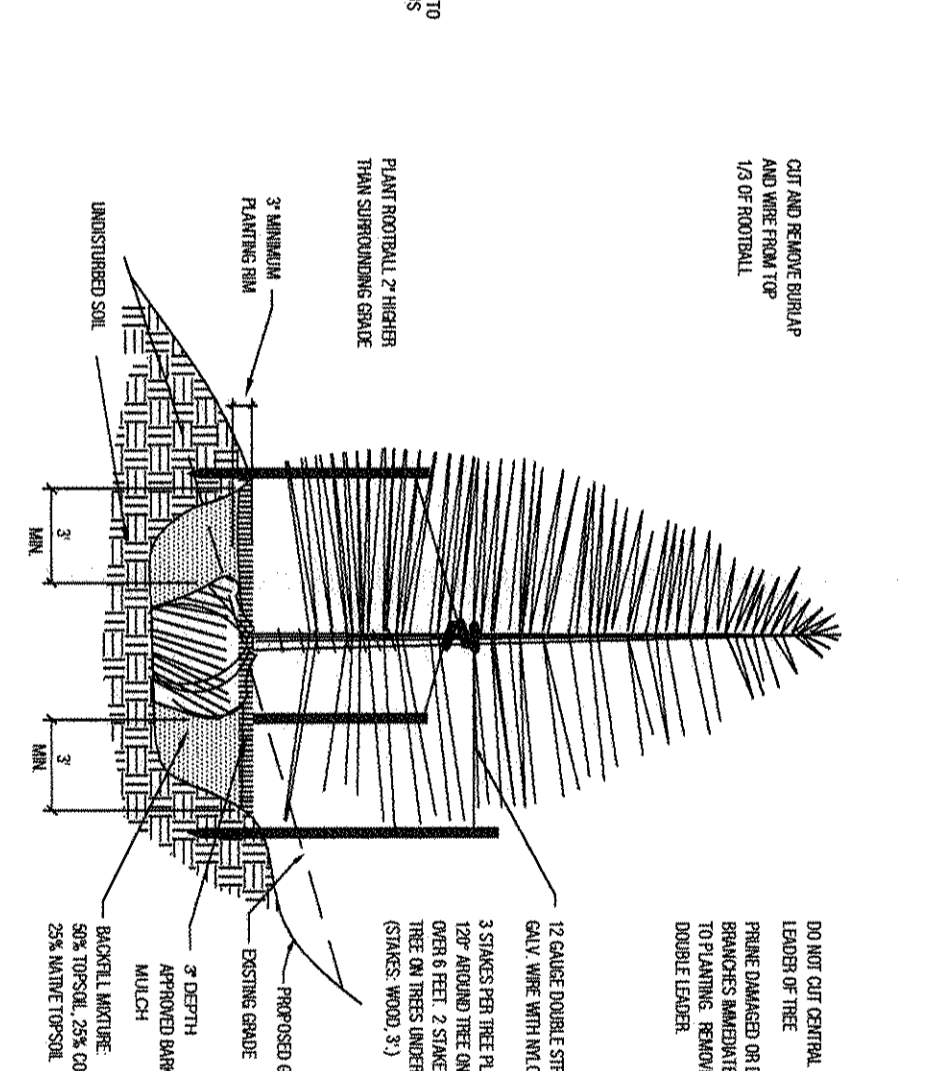
Deciduous Tree Planting Detail  
SCALE: WITH SCALE



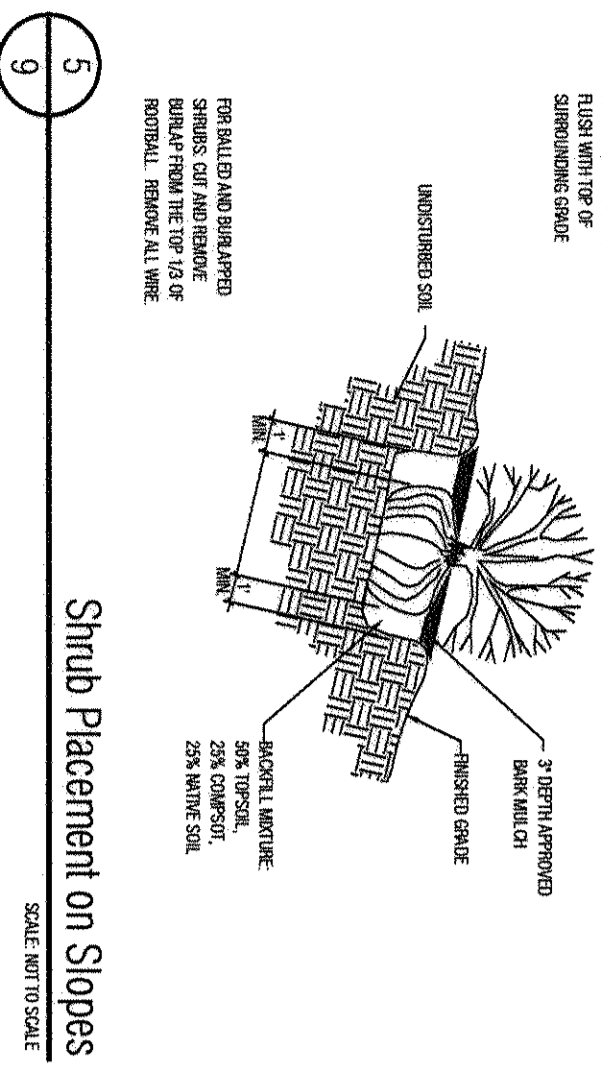
Coniferous Tree Planting Detail  
SCALE: WITH SCALE



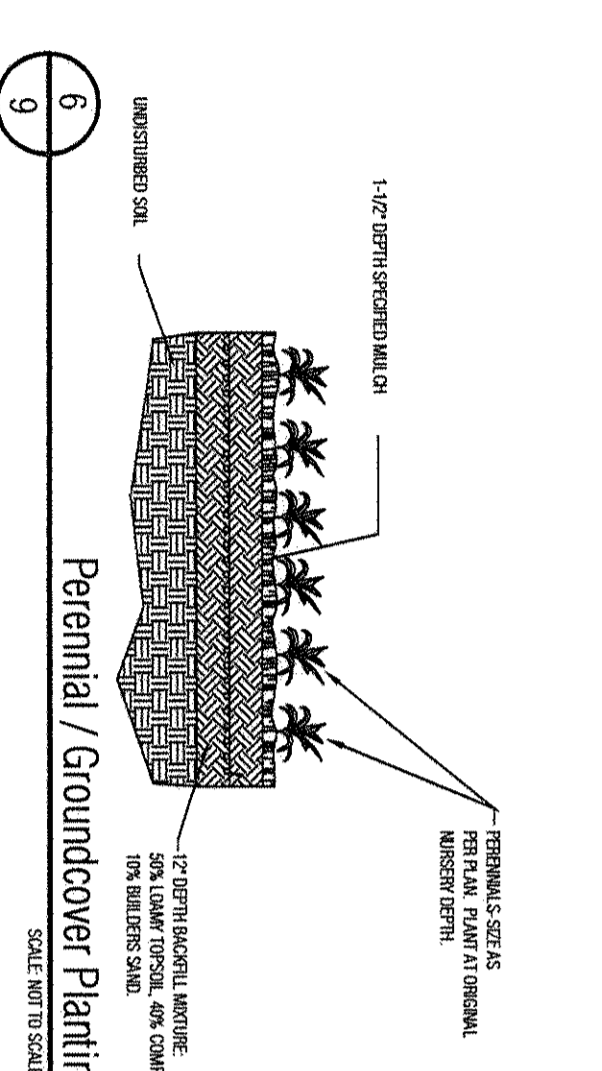
Deciduous Tree Placement on Slope  
SCALE: WITH SCALE



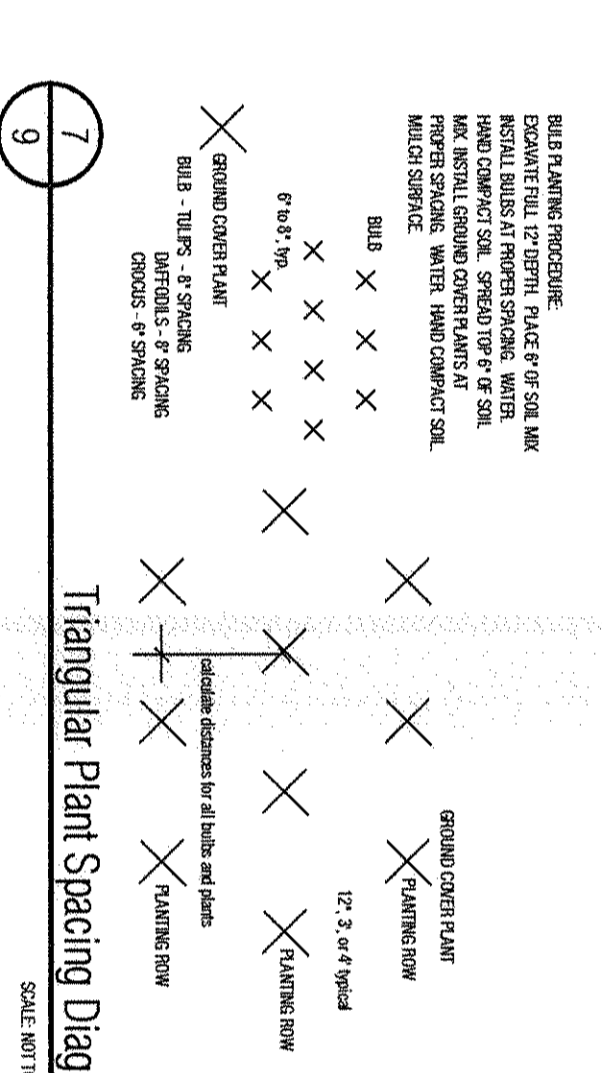
Coniferous Tree Placement on Slope  
SCALE: WITH SCALE



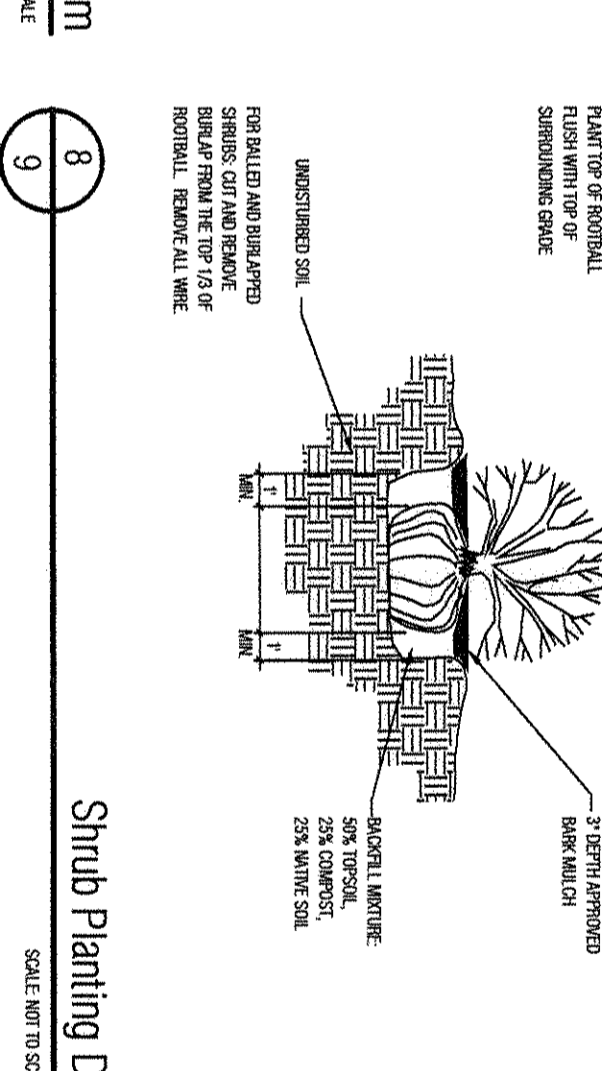
Shrub Placement on Slopes  
SCALE: WITH SCALE



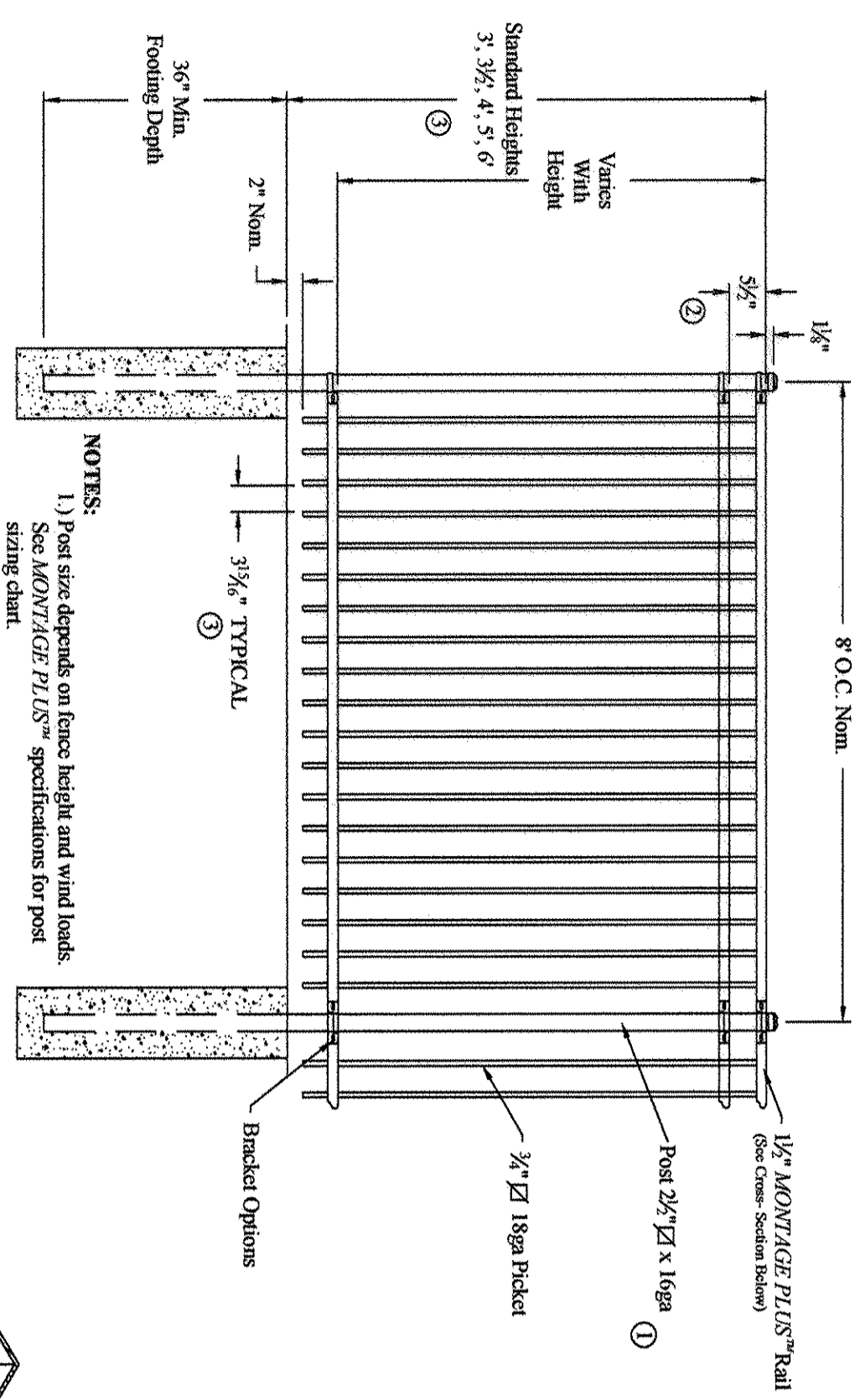
Perennial / Groundcover Planting  
SCALE: WITH SCALE



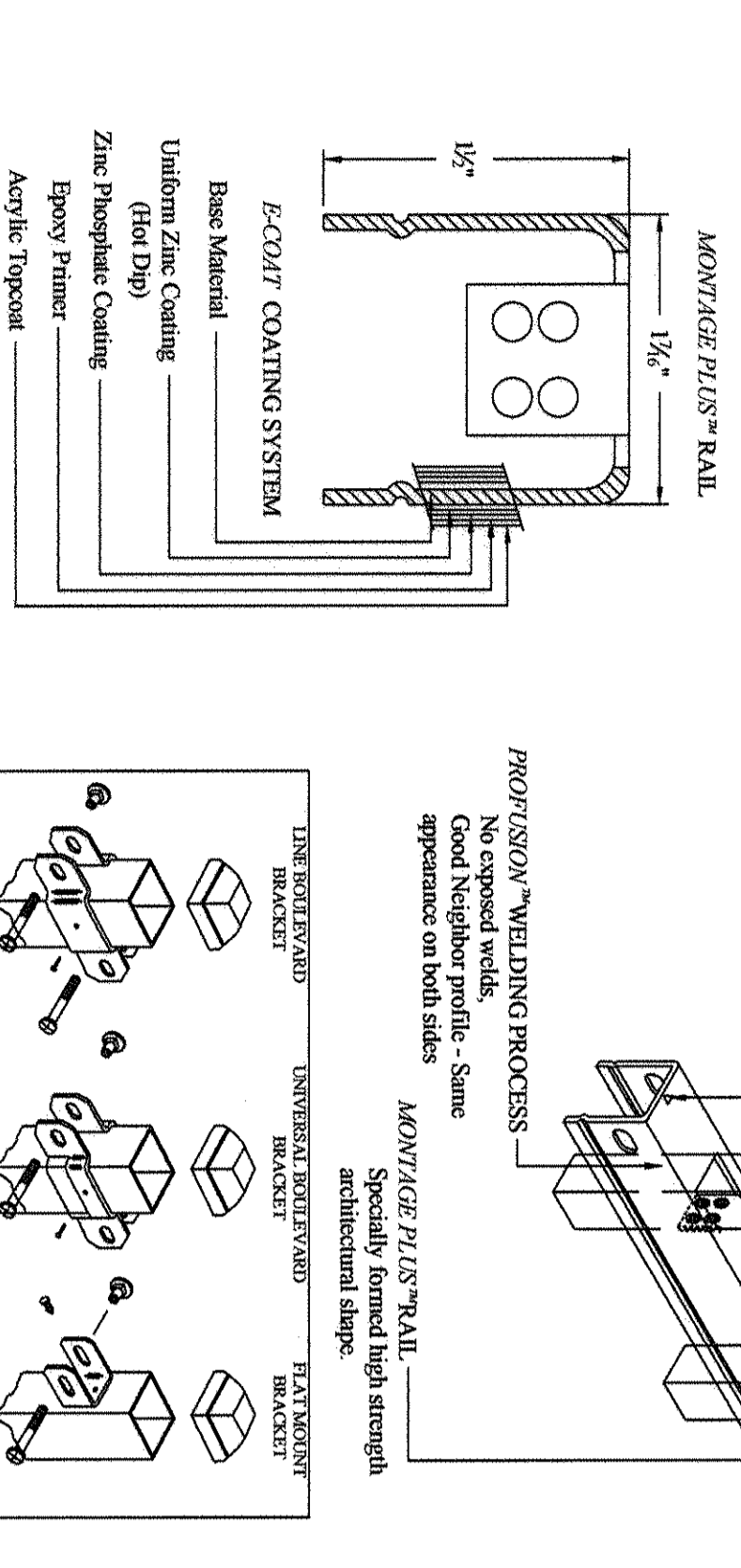
Triangular Plant Spacing Diagram  
SCALE: WITH SCALE



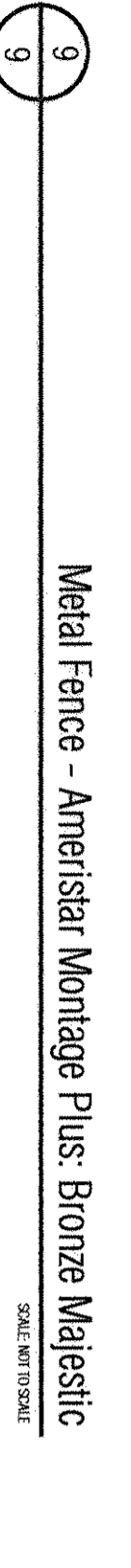
Shrub Planting Detail  
SCALE: WITH SCALE



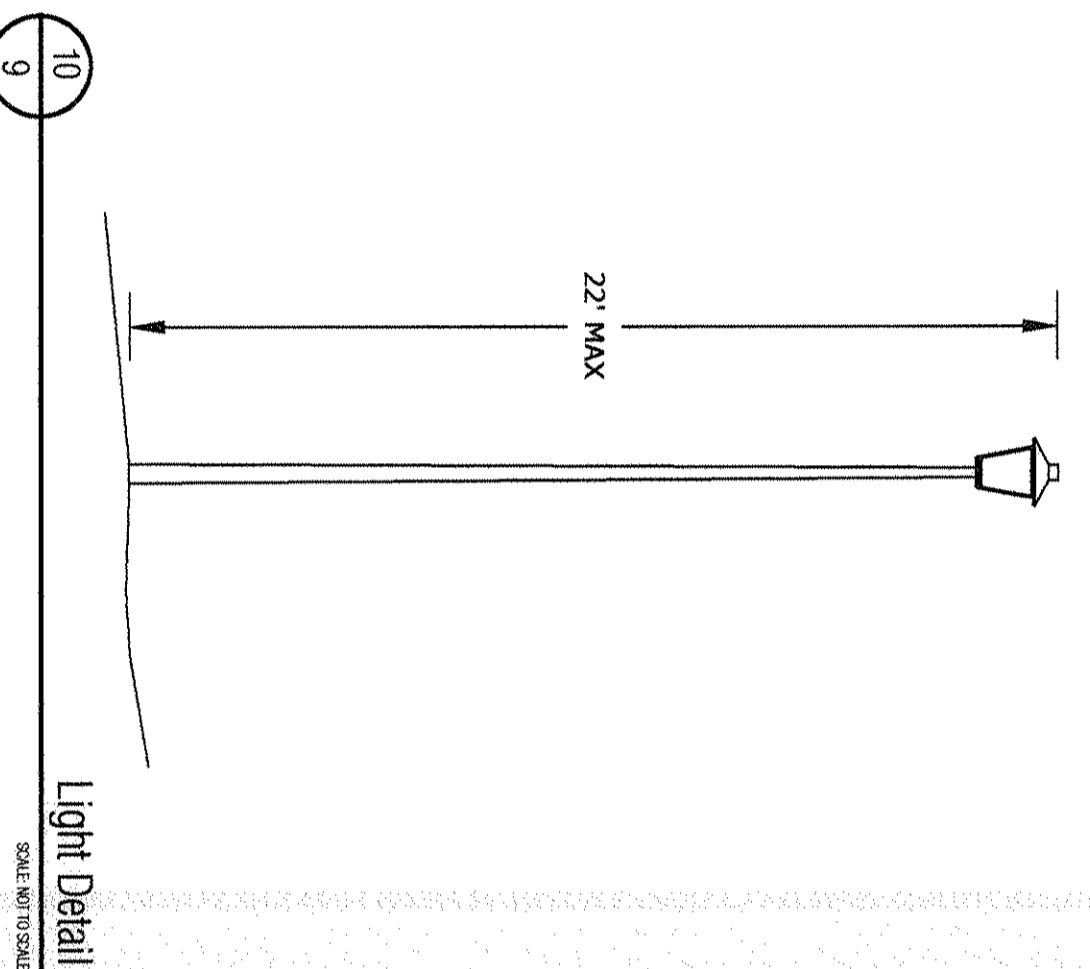
NOTES:  
1.) Post size depends on fence height and wind loads. See MONTAGE PLUS specifications for post.  
2.) Third rail required for Double Rails.  
3.) Available in 3' air space and/or final bottom on most heights.



NOTE: Gate to be Ameristar Montage Plus 6' Width Majestic Gate



Metal Fence - Ameristar Montage Plus - Bronze Majestic  
SCALE: WITH SCALE



Light Detail  
SCALE: WITH SCALE

**PLANT SCHEDULE**

DECIDUOUS TREES	CODE	BOTANICAL NAME / COMMON NAME	HEIGHT	WIDTH	SIZE	COND.	QTY
+	Gr	Gleditsia thornbush / Honey Locust	60'	40'	3" Cal.	BBB	3
+	Qal	Quercus alba / White Oak	60'	60'	3" Cal.	BBB	8
+	Tan	Tilia americana / American Linden	80'	50'	3" Cal.	BBB	8
+	Jaw	Juniperus scopulorum / Wichita Blue / Wichita Blue Juniper	20'	10'	6" HT	BBB	13
+	Pad	Prunus edulis / Prion Pine	30'	20'	6" HT	BBB	19
+	Ppo	Prunus pennsylvanica / Pennsylvania Pine	80'	40'	8" HT	BBB	11
EVERGREEN TREES	CODE	BOTANICAL NAME / COMMON NAME	HEIGHT	WIDTH	SIZE	COND.	QTY
+	Nvr	Nyctaginia x 'Red Jewel' / Cedar Apple	15'	10'	2" Cal.	BBB	4
SHRUBS	CODE	BOTANICAL NAME / COMMON NAME	HEIGHT	WIDTH	SIZE	COND.	QTY
+	Jkc	Juniperus horizontalis 'Blue Chip' / Blue Chip Juniper	1'	8"	5 Gal.	CONT	2
GRASSES	CODE	BOTANICAL NAME / COMMON NAME	HEIGHT	WIDTH	SIZE	COND.	QTY
+	Ssc	Schizanthus scoparium / Little Bluestem Grass	4'	2.5'	1 Gal.	CONT	1

**SITE DATA**

- Land Use: Single Family Residential
- Number of Lots: 209 Lots
- Total Area: 67,895 AC
- Total Tract Area: 15,375 AC

**TREE REQUIREMENTS**

LOC Plant Category (ft)	Sheet Classification (Random Ridge / Local)	Sheet Footing Length	Required Trees	Provided Trees
		162'	59 (1 per 30')	66

**LANDSCAPE NOTES**

- CONTRACTOR TO UTILIZE STOCKPILED TOPSOIL FROM GRADING OPERATION AS AVAIL. TILL INTO TOP 6" OF SOIL.
- FOR GRADES REFER TO CIVIL ENGINEERS DRAWINGS.
- ALL TREES TO RECEIVE A BACK FILL MIXTURE OF 50% IMPORTED LOAMY TOPSOIL, 25% PEAT MOSS, AND 25% EXISTING SOIL.
- A FULLY AUTOMATED SPRINKLER IRRIGATION SYSTEM WILL DRIP IRRIGATE ALL TREES.
- ALL TREES TO BE STAKED WITH WOOD STAKES. FOR 3" CAL. DECIDUOUS TREES AND EVERGREEN TREES OVER 6 USE 3 WOOD STAKES (SPACE TO GROUND LEVEL).
- CONTRACTOR'S REVISIONS WILL INCLUDE SELECTION OF SPECIFIC PLANT MATERIALS AT NURSERY OR WHOLESALE, APPROVAL OF PLANT LOCATION STAKES BEFORE PLANT MATERIALS ARE INSTALLED, PUNCH LIST SITE INSPECTION, AND FINAL INSPECTION SITE VISITS.
- PRE-CONSTRUCTION MEETING/SELECTION OF PLANT MATERIALS AT THE NURSERY AND REVIEW OF SPECIFIED LANDSCAPE/IRRIGATION SUBMITTALS.
- IRRIGATION MAINLINE INSPECTION - PRESSURE TEST AND REVIEW OF MODEL IRRIGATION.
- IRRIGATION 95% / PUNCH INSPECTION.
- IRRIGATION 50% / FINAL INSPECTION.
- LANDSCAPE 50% INSPECTION / PUNCH INSPECTION.
- LANDSCAPE 95% INSPECTION / PUNCH INSPECTION.
- LANDSCAPE FINAL ACCEPTANCE INSPECTION AND COUNTY LANDSCAPE AND IRRIGATION AFFIDAVITS.
- PLANTS SHALL BE WARRANTED FOR THE DURATION OF TWO FULL YEARS AFTER THE INSTALLATION (WARRANTY SHALL COVER 100% OF THE REPLACEMENT COST).
- ALL PLANTS TO RECEIVE 3 INCH DEPTH OF SHREDED CEDAR WOOD MULCH UNLESS OTHERWISE SPECIFIED. MULCH RINGS TO BE 15" DIA. FOR 5" GAL. SHRUBS AND 36" DIA. FOR TREES NOT PLANTED IN BEDS, WITH THE EXCEPTION OF BLUEGRASS SOD AREAS IN WHICH TREES SHALL RECEIVE 60" DIA. MULCH RING. AVAILABLE FROM OAC SAND CEDAR WHICH TREES SHALL RECEIVE 60" DIA. MULCH RING.
- CONTRACTOR IS RESPONSIBLE FOR INSTALLING ALL PLANT MATERIAL SHOWN ON THIS PLAN. IF ANY DISCREPANCIES ARE FOUND BETWEEN THE LANDSCAPE PLAN AND THE PLANT SCHEDULE, THE QUANTITIES SHOWN ON THE LANDSCAPE PLAN SUPERSEDE THOSE SHOWN ON THE PLANT SCHEDULE.
- CONTACT THE LANDSCAPE ARCHITECT FOR ANY DISCREPANCIES WITH THE DRAWINGS OR VARIATIONS IN THE FIELD.
- CALL FOR UTILITY LOCATIONS PRIOR TO ANY PLANT INSTALLATION.
- LANDSCAPING IN THE SIGHT TRIANGLES SHALL NOT EXCEED 18" IN HEIGHT.
- FENCING DETAILS ARE TYPICAL AND MAY BE SUBJECT TO MINOR VARIATIONS IN MATERIALS. REVIEW OF ALTERNATE PLANS, DETAILS, OR OTHER DOCUMENTATION IN SUPPORT OF THE VARIATION.

**Seed Mix B with Wildflowers**

30% Echinium Crispus Wildflowergrass	Native Grass Mix available from Wildflower Seed Co. (303) 431-7333
20% Sorghum bicolor	Advanced Heavy Seed Solutions (617) 591-5597
15% Bahiania Canadensis	Wildflower Mix available from: Applwood Seed Co. (303) 431-7333
10% Chamaecrista	
15% Blue Grass	
Wildflowers: 013 Western Mix	

APPLICATION RATE: Native Grass Mix: 40 lbs./acre (or as recommended by supplier)  
Wildflower Mix: 6 oz./1,000 sq. ft. or 8-10 lbs./acre  
Hydromulch: 2200 lbs./acre media, 100 lbs./acre tackifier.

APPLICATION METHOD: Broadcast seed by hand or with a drop spreader. Manually rake seed into prepared soil. After seeding apply green hydromulch and tackifier.

**Seed Mix A**

15% Western Wheatgrass	
15% Big Bluestem	
15% Thickspike Wheatgrass	
10% Shindaghi Grass	
15% Blue Grama	
15% Blue Grama	
15% Annual Ryegrass	

APPLICATION RATE: Native Grass Mix: 3 lbs./1,000 sq. ft. or 130 lbs./acre  
Hydromulch: 2200 lbs./acre media, 100 lbs./acre tackifier

APPLICATION METHOD: Broadcast seed by hand or with a drop spreader. Manually rake seed into prepared soil. After seeding apply green hydromulch and tackifier.

**Stonebridge Filing 4 At Meridian Ranch**

Final Landscape Plan  
January 1, 2018  
DATE: 1/1/2018  
PROJECT MGR: M. Smith  
PREPARED BY: M. Smith

ISSUE INFO	ISSUE INFO
DATE: 7/20/2018 BY: JSB PER COMMENTS	DATE: 9/20/2018 BY: NS PER COMMENTS

LANDSCAPE DETAILS

9 OF 15

PLAN FILE # PCD # PUDSP-18-003

Land Planning Landscape Architecture Urban Design

**NBS**

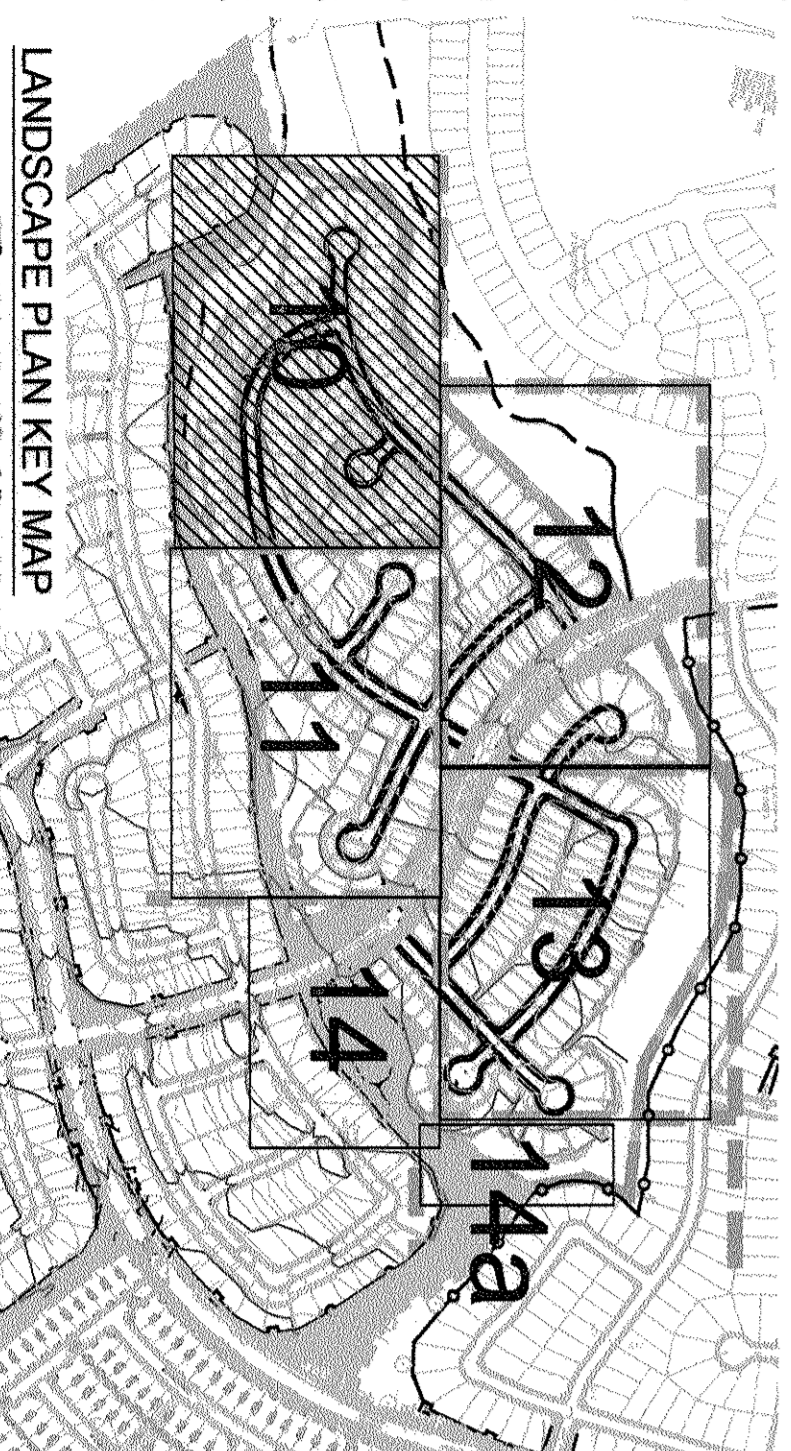
N.B.S., Inc.  
619 N. Cascade Ave., Ste. 200  
Colorado Springs, CO 80903  
Tel. 719.471.0073  
Fax 719.471.0267  
www.nbscolorado.com

© 2012, All Rights Reserved.

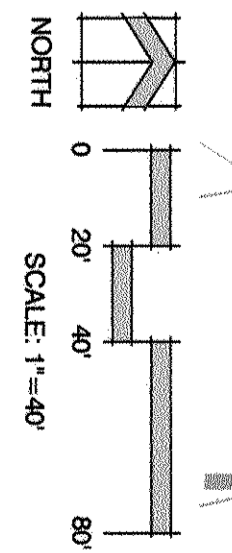


**LEGEND**

- METAL FENCE - SEE DETAIL / SHEET 9
- SEED MIX A
- SEED MIX B WITH WILDFLOWERS



Z220059781  
S-1-2020



<p>PLAN FILE #</p> <p>SHEET NUMBER</p> <p>SHEET TITLE</p> <p>ISSUE / REVISION</p> <p>ISSUE #/O</p> <p>SEAL</p>	<p>DATE: 7/20/2018</p> <p>BY: JSS</p> <p>REVISION: Per County Comments</p> <p>DATE: 9/20/2018</p> <p>BY: NS</p> <p>REVISION: Comments</p>	<p>PROJECT INFO</p> <p>DATE: January 1, 2018</p> <p>PROJECT MGR: N. Smith</p> <p>PREPARED BY: N. Smith</p>	<p>Final Landscape Plan</p> <p><b>Stonebridge Filing 4 At Meridian Ranch</b></p>	<p>IN ASSOCIATION WITH</p>	<p>PLANNER / LANDSCAPE ARCHITECT</p> <p>© 2012, All Rights Reserved.</p> <p>www.nrescolorado.com</p> <p>N.R.S. Inc. 619 N. Cascade Ave., Ste. 200 Colorado Springs, CO 80903 Tel: 719.471.0073 Fax: 719.471.0267</p>	<p>Land Planning Landscape Architecture Urban Design</p> <p><b>NRES</b></p>
--	---	--	--	----------------------------	--	---

**10**  
OF 15

**LANDSCAPE PLAN**

PCD# PUDSP-18-003


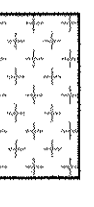
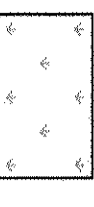


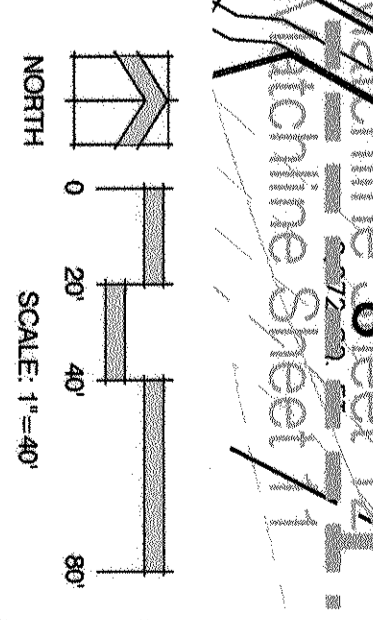
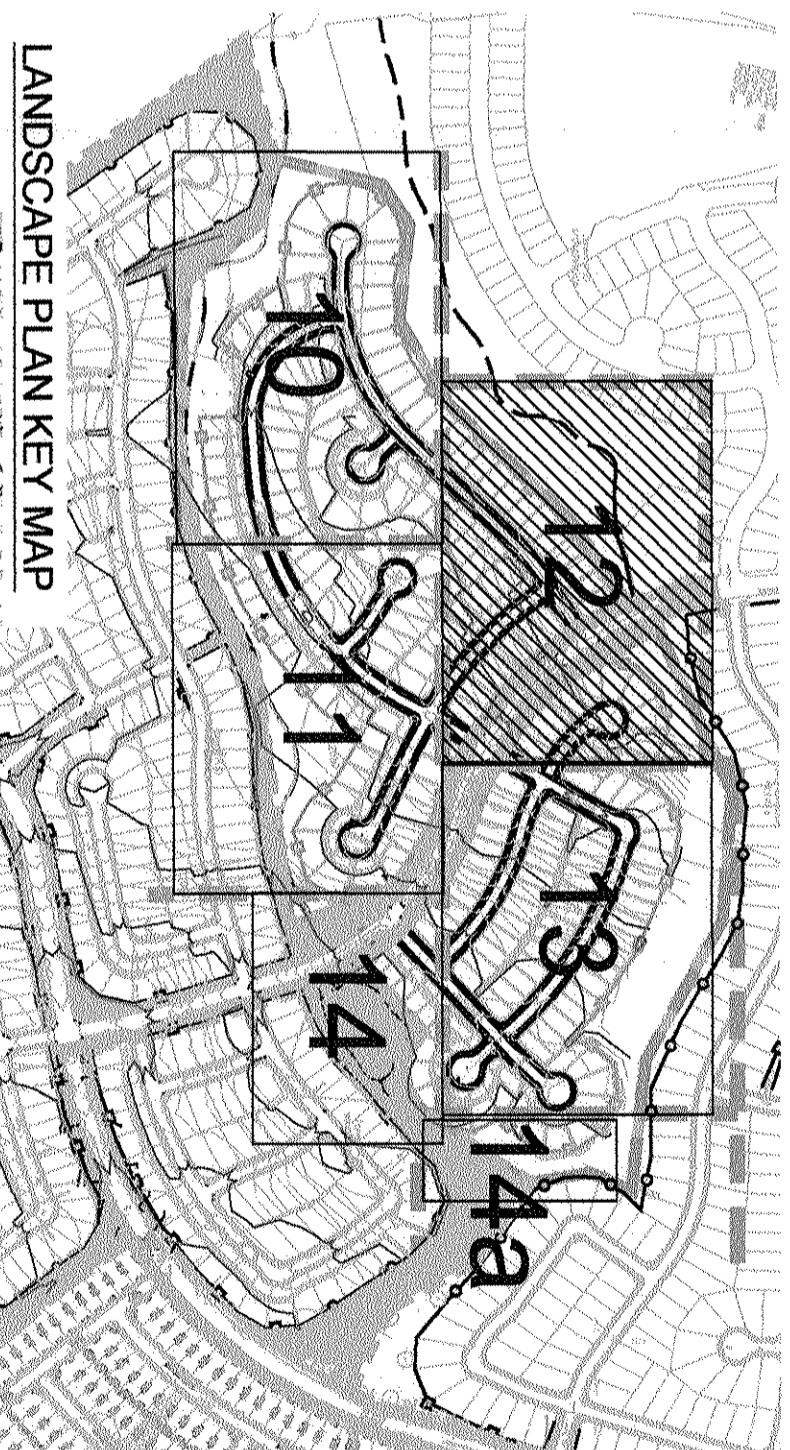
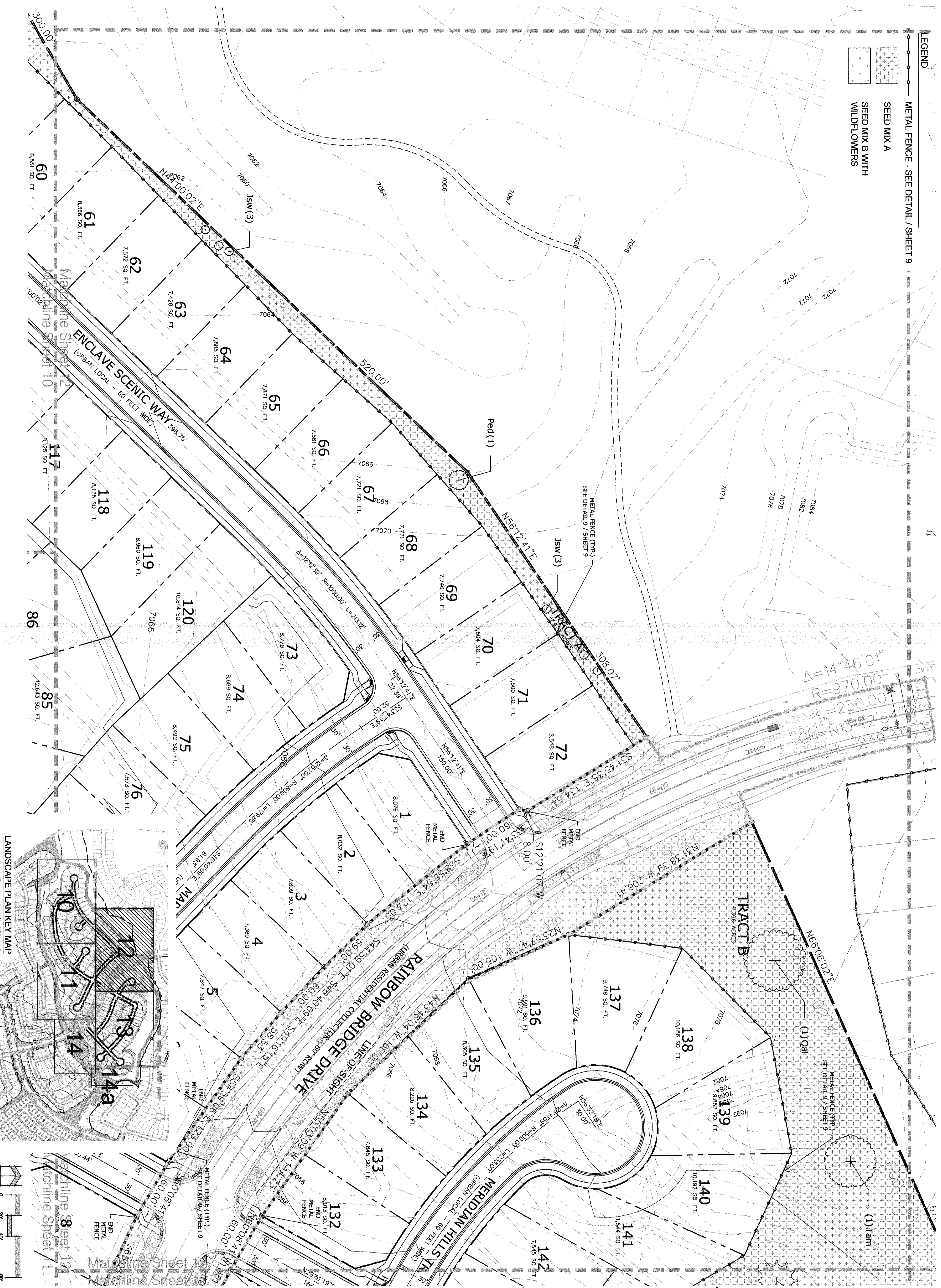


<p>PLANNING ARCHITECT</p> <p><b>NES</b></p> <p>N.E.S. Inc. 619 N. Cascade Ave., Ste. 200 Colorado Springs, CO 80903 Tel. 719.471.0073 Fax 719.471.0287 www.nescolorado.com</p> <p>© 2012. All Rights Reserved.</p>	<p>Final Landscape Plan</p> <p><b>Stonebridge Filing 4 At Meridian Ranch</b></p> <p>January 1, 2018 Landscape Plan N. Swenson</p>	<p>DATE: 1/1/2018 PREPARED BY: N. Swenson</p>	<p>ISSUE / REVISION</p> <table border="1"> <tr> <th>DATE</th> <th>BY</th> <th>DESCRIPTION</th> </tr> <tr> <td>7/20/2018</td> <td>JSB</td> <td>Per County Per County</td> </tr> <tr> <td>8/20/2018</td> <td>MS</td> <td>Comments</td> </tr> </table>	DATE	BY	DESCRIPTION	7/20/2018	JSB	Per County Per County	8/20/2018	MS	Comments	<p>ISSUE INFO</p> <p>SEAL</p>	<p>SHEET NUMBER</p> <p><b>11</b></p> <p>OF 15</p> <p>PCD# PUDSP-18-003</p>	<p>LANDSCAPE PLAN</p>
DATE	BY	DESCRIPTION													
7/20/2018	JSB	Per County Per County													
8/20/2018	MS	Comments													



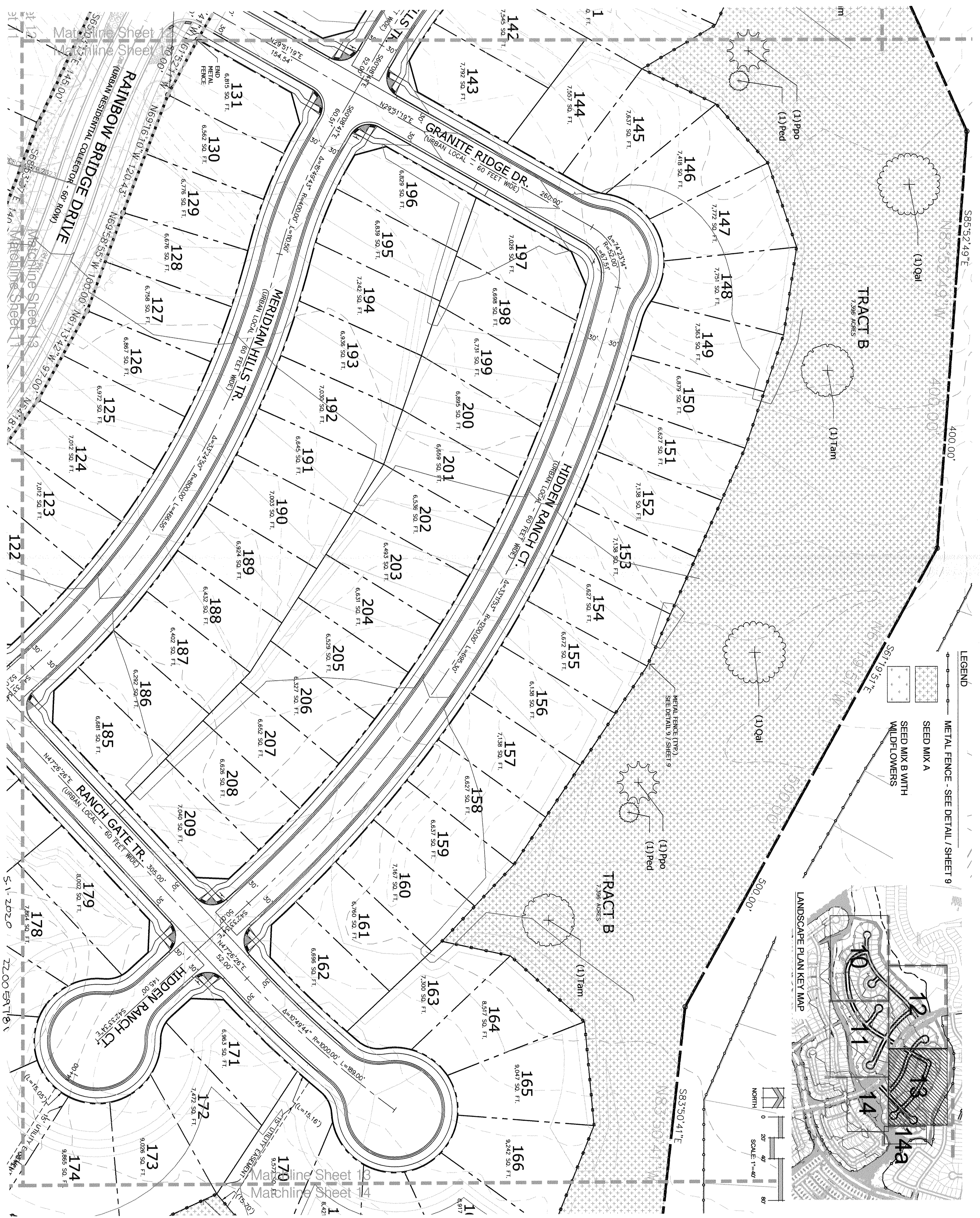
**LEGEND**


-  METAL FENCE - SEE DETAIL / SHEET 9
-  SEED MIX A
-  SEED MIX B WITH WILDFLOWERS



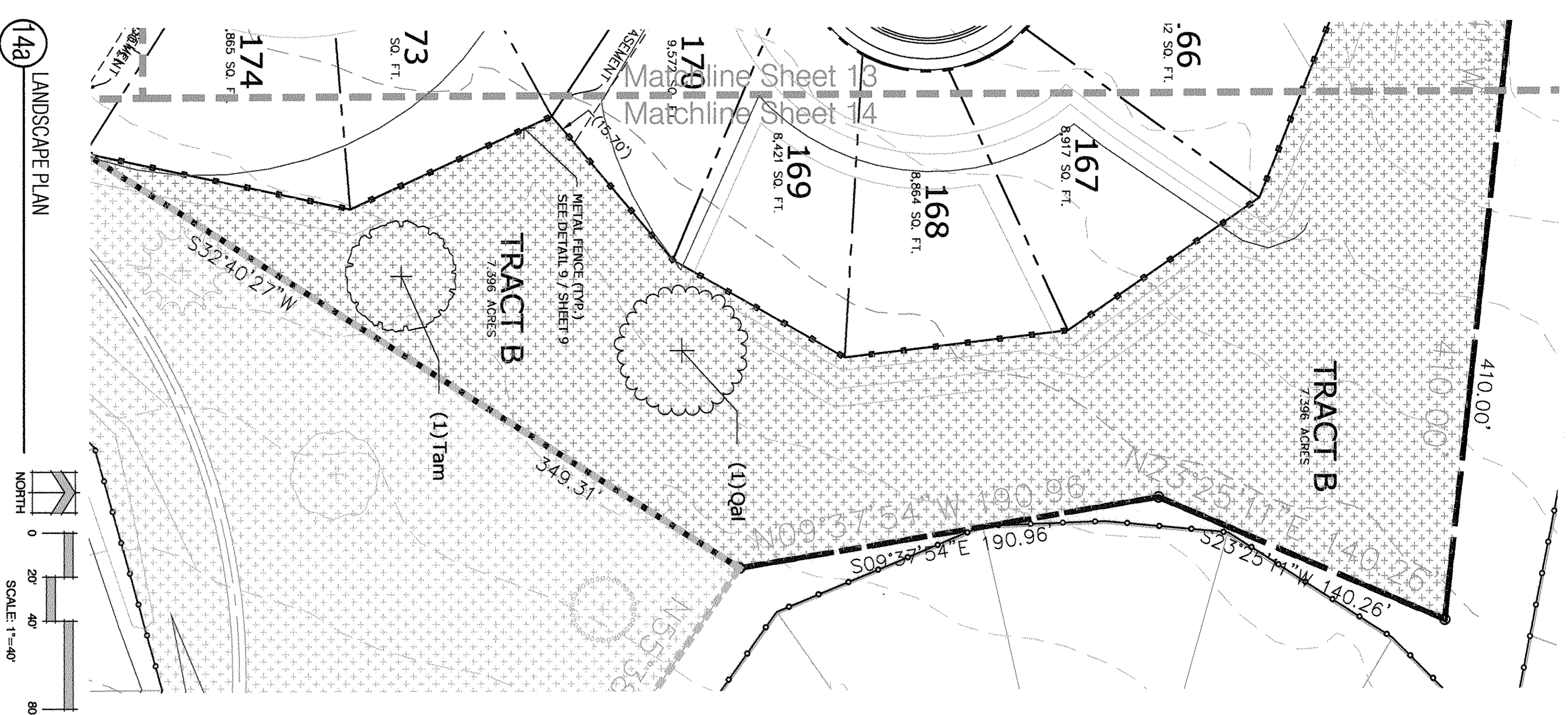
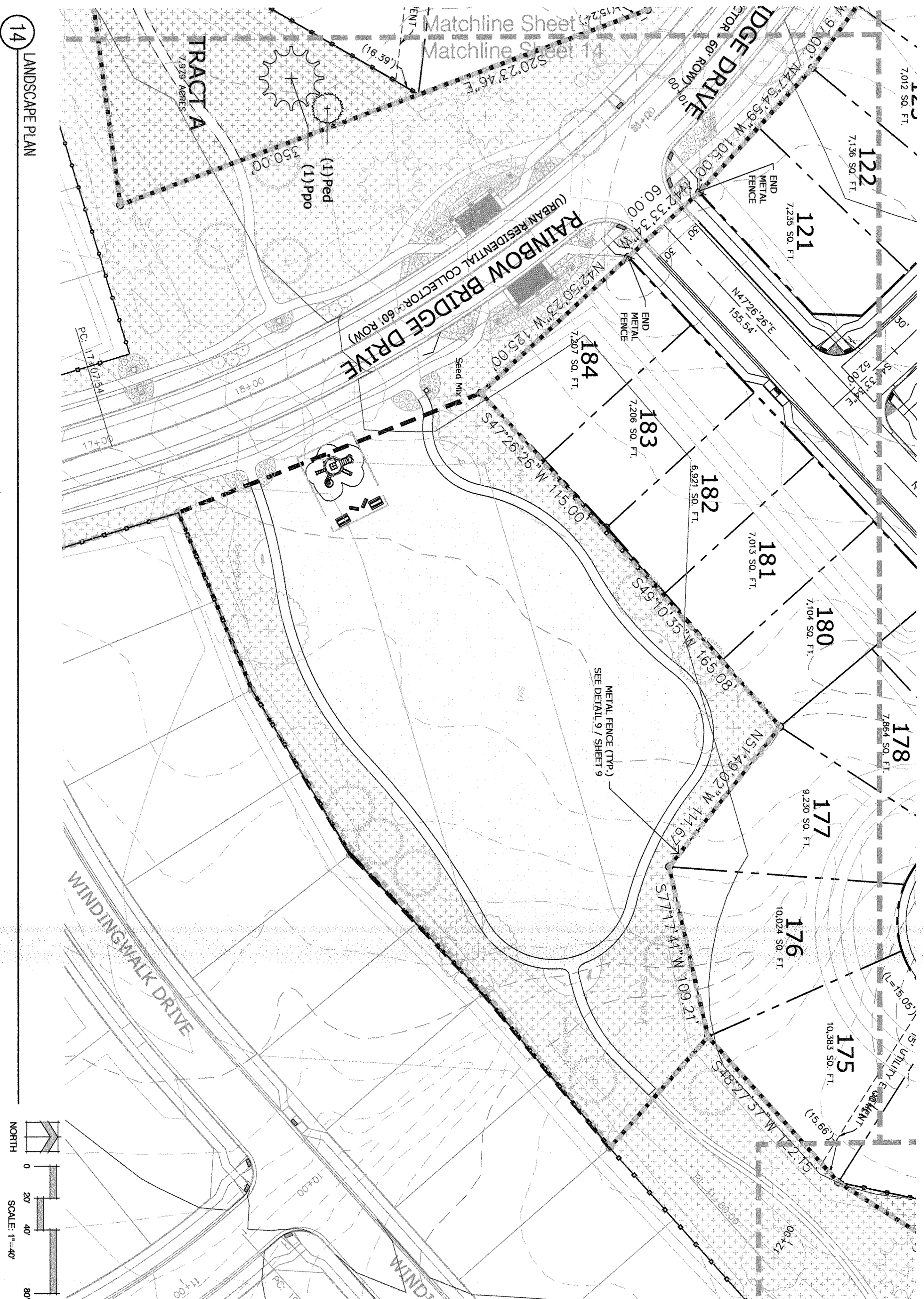
<p>PLAN FILE # PCD # PUDSP-18-003</p>	<p>SHEET NUMBER <b>12</b> OF 15</p>	<p>SHEET TITLE <b>LANDSCAPE PLAN</b></p>	<p>ISSUE / REVISION</p>	<p>ISSUE INFO</p>	<p>SEAL</p>	<p>PROJECT INFO  <b>Final Landscape Plan</b>                  Stonebridge Filing 4 At Meridian Ranch</p>	<p>IN ASSOCIATION WITH</p>	<p>PLANNER / LANDSCAPE ARCHITECT</p>	<p><b>NES</b>                  N.E.S. Inc.                  619 N. Cascade Ave., Ste. 200                  Colorado Springs, CO 80903                  Tel. 719.471.0073                  Fax 719.471.0267                  www.nescolorado.com                  © 2012. All Rights Reserved.</p>
---	---	--	-------------------------	-------------------	-------------	--	----------------------------	--------------------------------------	---



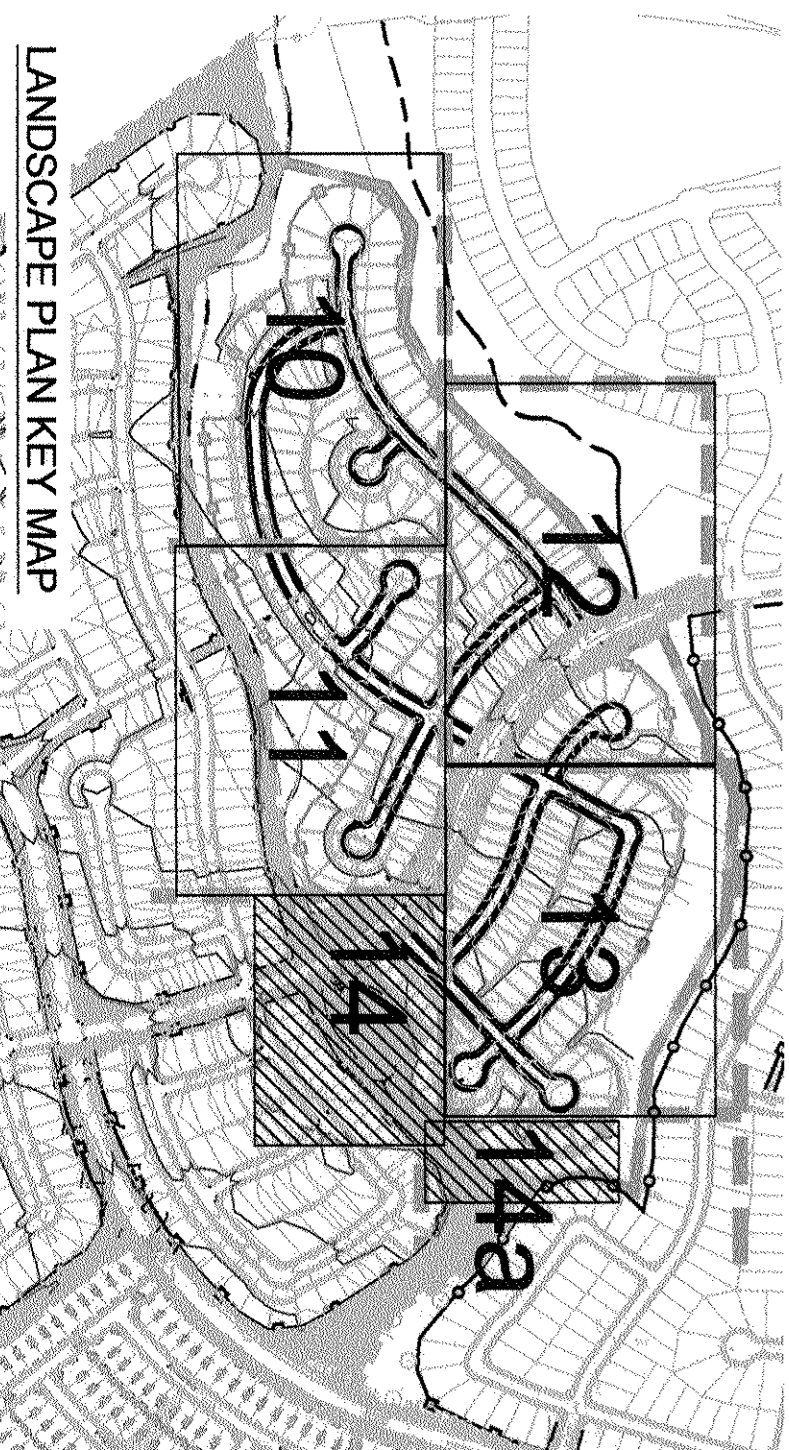


<p>Land Planning Landscape Architecture Urban Design</p>  <p>N.E.S., Inc. 619 N. Cascade Ave., Ste. 200 Colorado Springs, CO 80903 Tel. 719.471.0073 Fax 719.471.0267 www.nescolorado.com © 2012, All Rights Reserved.</p>	<p>PLANNER / LANDSCAPE ARCHITECT</p> <p>PROJECT INFO</p> <p>DATE: January 1, 2018 PROJECT NOS: Final Landscape Plan PREPARED BY: A. Barlow, M. Swift</p> <p>Stonebridge Filing 4 At Meridian Ranch</p>	<p>PLAN FILE # PCD # PUDSP-18-003</p> <p>SHEET NUMBER 13 OF 15</p> <p>SHEET TITLE LANDSCAPE PLAN</p> <p>DATE: 7/20/2018 BY: JSB PER COUNTY: Per County REV. COMMENTS: Per County Comments</p>
---	--	---





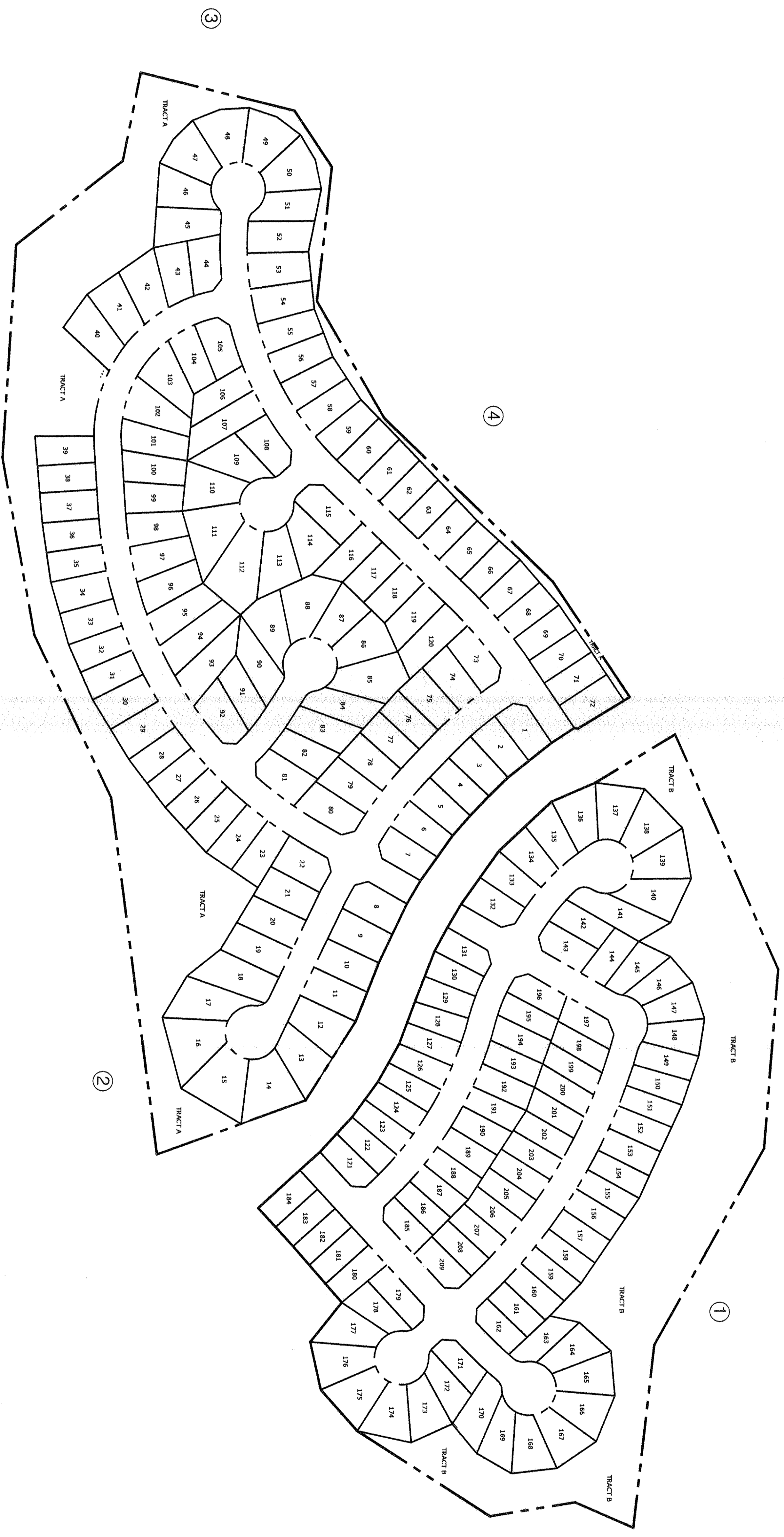
- LEGEND**
- METAL FENCE - SEE DETAIL / SHEET 9
  - SEED MIX A 220059181
  - SEED MIX B WITH WILDFLOWERS 5-1-2020



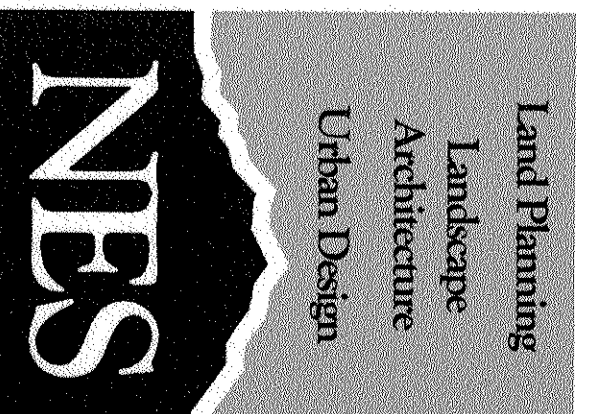
<p>PLAN FILE #</p> <p>PCC # PUDSP-18-003</p>	<p>SHEET NUMBER</p> <p><b>14</b></p> <p>OF 15</p>	<p>SHEET TITLE</p> <p><b>LANDSCAPE PLAN</b></p>	<p>ISSUE / REVISION</p>	<p>ISSUE INFO</p> <p>DATE: 7/20/2018</p> <p>BY: MS</p> <p>REVISION: Per County Comments</p> <p>DATE: 8/20/2018</p> <p>BY: MS</p> <p>REVISION: Per County Comments</p>	<p>SEAL</p>	<p>PROJECT INFO</p> <p>DATE: January 1, 2018</p> <p>PROJECT NBR: A-Landsc</p> <p>PREPARED BY: M. SMITH</p>	<p>IN ASSOCIATION WITH</p>	<p>PLANNER / LANDSCAPE ARCHITECT</p> <p>NES, Inc.</p> <p>619 N. Cascade Ave., Ste. 200</p> <p>Colorado Springs, CO 80903</p> <p>Tel. 719.471.0073</p> <p>Fax 719.471.0267</p> <p>www.nescolorado.com</p> <p>© 2012, All Rights Reserved.</p>	<p>Land Planning Landscape Architecture Urban Design</p>



- ADJACENT OWNERS**
- 1. 4200000410  
GTL INC.  
3575 KENNON STE 200  
SAN DIEGO CA 92110
  - 2. 4200000413  
MERIDIAN RANCH INVESTMENTS INC.  
PO BOX 80026  
SAN DIEGO CA 92138
  - 3. 4230401049  
MERIDIAN RANCH GOLF COURSE LLC  
PO BOX 80026  
SAN DIEGO CA 92138
  - 4. 4230401047  
MERIDIAN SERVICE METRO DISTRICT  
7995 FRENCH AVE STE 100E  
ENGLEWOOD CO 80111



226059781  
5-1-2020



N.R.S. Inc.  
619 N. Cascade Ave., Ste. 200  
Colorado Springs, CO 80903  
Tel. 719.471.0073  
Fax 719.471.0267  
www.nrescolorado.com  
© 2012. All Rights Reserved.

**Stonebridge  
Filing 4  
At Meridian  
Ranch**

PUD Development Plan /  
Preliminary Plan

DATE: January 4, 2018  
DRAWN BY: B. Swenson  
PREPARED BY: B. Swenson

DATE	BY	DESCRIPTION
7/20/2018	JRS	Per County Per County
8/20/2018	MS	Comments