

Seed Mix B with Wildflowers

30% Ephraim Crested Wheatgrass
25% Dwarf Perennial Ryegrass
20% SR3200 Blue Fescue
15% Ruebens Canada Bluegrass
10% Chewings Fescue
15% Blue Grama
Wildflowers: 615 Western Mix

Note: Low Gro Mix available from Arkansas Valley Seed Solutions (877) 957-3337

Wildflower Mix available from: Applewood Seed Co. (303) 431-7333

APPLICATION RATE: Native Grass Mix: 40 lbs./acre (or as recommended by supplier)
Wildflower Mix: 6 oz./1,000 s.f. or 8-10 lbs./acre
Hydromulch: 2200 lbs./acre mulch, 100 lbs./acre tackifier.

APPLICATION METHOD: Broadcast seed by hand or with a drop spreader.
Manually rake seed into prepared soil.
After seeding apply green hydromulch and tackifier.

Seed Mix A

15% Western Wheatgrass
15% Big Bluestem
15% Thickspike Wheatgrass
10% Sideoats Grama
15% Little Bluestem
15% Blue Grama
15% Annual Rye

APPLICATION RATE: Native Grass Mix: 3 lbs./1,000s.f. or 130 lbs./acre
Hydromulch: 2200 lbs./acre mulch, 100 lbs./acre tackifier

APPLICATION METHOD: Broadcast seed by hand or with a drop spreader.
Manually rake seed into prepared soil.
After seeding apply green hydromulch and tackifier.

PLANT SCHEDULE

DECIDUOUS TREES	CODE	BOTANICAL NAME / COMMON NAME	HEIGHT	WIDTH	SIZE	COND	QTY
	Gtr	Gleditsia triacanthos / Honey Locust	60'	40'	3" Cal.	B&B	3
	Qal	Quercus alba / White Oak	60'	60'	3" Cal.	B&B	8
	Tam	Tilia americana / American Linden	80'	50'	3" Cal.	B&B	8
EVERGREEN TREES	CODE	BOTANICAL NAME / COMMON NAME	HEIGHT	WIDTH	SIZE	COND	QTY
	Jsw	Juniperus scopulorum 'Wichita Blue' / Wichita Blue Juniper	20'	10'	6" HT	B&B	13
	Ped	Pinus edulis / Pinon Pine	30'	20'	6" HT	B&B	19
	Ppo	Pinus ponderosa / Ponderosa Pine	80'	40'	8" HT	B&B	11
ORNAMENTAL TREE	CODE	BOTANICAL NAME / COMMON NAME	HEIGHT	WIDTH	SIZE	COND	QTY
	Mxr	Malus x 'Red Jewel' / Crab Apple	15'	10'	2" Cal.	B&B	4
SHRUBS	CODE	BOTANICAL NAME / COMMON NAME	HEIGHT	WIDTH	SIZE	COND	QTY
	Jbc	Juniperus horizontalis 'Blue Chip' / Blue Chip Juniper	1'	8"	5 GAL	CONT	2
GRASSES	CODE	BOTANICAL NAME / COMMON NAME	HEIGHT	WIDTH	SIZE	COND	QTY
	Ssc	Schizachyrium scoparium / Little Bluestem Grass	4'	2.5'	1 GAL	CONT	1

SITE DATA

Land Use: Single Family Residential
Number of Lots: 209 Lots
Total Area: 67,895 AC
Total Tract Area: 15,375 AC

TREE REQUIREMENTS

LDC Plant Category	Street (Classification)	Street Frontage Length	Required Trees	Provided Trees
(RB)	Rainbow Bridge (Local)	1,624'	55 (1 per 30')	66

- LANDSCAPE NOTES**
- CONTRACTOR TO UTILIZE STOCKPILED TOPSOIL FROM GRADING OPERATION AS AVAIL. TILL INTO TOP 6" OF SOIL.
 - FOR GRADES REFER TO CIVIL ENGINEERS DRAWINGS.
 - ALL TREES TO RECEIVE A BACK FILL MIXTURE OF 50% IMPORTED LOAMY TOPSOIL, 25% PEAT MOSS, AND 25% EXISTING SOIL.
 - A FULLY AUTOMATED SPRINKLER IRRIGATION SYSTEM WILL DRIP IRRIGATE ALL TREES. OTHERWISE SPECIFIED. MULCH RINGS TO BE 15" DIA. FOR 5 GALLON SHRUBS AND 36" DIA. FOR TREES NOT PLANTED IN BEDS, WITH THE EXCEPTION OF BLUEGRASS SOD AREAS IN WHICH TREES SHALL RECEIVE 60" DIA. MULCH RING. AVAILABLE FROM C&C SAND CEDAR MULCH (719)471-7222.
 - MINIMUM INSPECTIONS WILL INCLUDE SELECTION OF SPECIMEN PLANT MATERIALS AT CONTRACTOR'S NURSERY OR WHOLESALER, APPROVAL OF PLANT LOCATION STAKES BEFORE PLANT MATERIALS ARE INSTALLED, "PUNCH LIST" SITE INSPECTION, AND FINAL INSPECTION SITE VISITS.
 - PRE-CONSTRUCTION MEETING/SELECTION OF PLANT MATERIALS AT THE NURSERY AND REVIEW OF SPECIFIED LANDSCAPE/IRRIGATION SUBMITTALS.
 - IRRIGATION MAINLINE INSPECTION - PRESSURE TEST AND REVIEW OF MODEL IRRIGATION.
 - IRRIGATION 95% / PUNCH INSPECTION.
 - IRRIGATION FINAL ACCEPTANCE INSPECTION.
 - LANDSCAPE 50% INSPECTION - 1/2 THROUGH ENTIRE PROJECT
 - LANDSCAPE 95% INSPECTION/ PUNCH INSPECTION.
 - LANDSCAPE FINAL ACCEPTANCE INSPECTION AND COUNTY LANDSCAPE AND IRRIGATION AFFIDAVITS.
 - PLANTS SHALL BE WARRANTED FOR THE DURATION OF TWO FULL YEARS AFTER THE INSTALLATION (WARRANTY SHALL COVER 100% OF THE REPLACEMENT COST).
 - ALL PLANTS TO RECEIVE 3 INCH DEPTH OF SHREDDED CEDAR WOOD MULCH UNLESS OTHERWISE SPECIFIED. MULCH RINGS TO BE 15" DIA. FOR 5 GALLON SHRUBS AND 36" DIA. FOR TREES NOT PLANTED IN BEDS, WITH THE EXCEPTION OF BLUEGRASS SOD AREAS IN WHICH TREES SHALL RECEIVE 60" DIA. MULCH RING. AVAILABLE FROM C&C SAND CEDAR MULCH (719)471-7222.
 - CONTRACTOR IS RESPONSIBLE FOR INSTALLING ALL PLANT MATERIAL SHOWN ON THIS PLAN. IF ANY DISCREPANCIES ARE FOUND BETWEEN THE LANDSCAPE PLAN AND THE PLANT SCHEDULE, THE QUANTITIES SHOWN ON THE LANDSCAPE PLAN SUPERSEDE THOSE SHOWN ON THE PLANT SCHEDULE.
 - CONTACT THE LANDSCAPE ARCHITECT FOR ANY DISCREPANCIES WITH THE DRAWINGS OR VARIATIONS IN THE FIELD.
 - CALL FOR UTILITY LOCATIONS PRIOR TO ANY PLANT INSTALLATION.
 - LANDSCAPING IN THE SIGHT TRIANGLES SHALL NOT EXCEED 18" IN HEIGHT.
 - FENCING DETAILS ARE TYPICAL AND MAY BE SUBJECT TO MINOR VARIATIONS IN MATERIALS. ANY VARIATION SHALL BE AUTHORIZED BY THE DEVELOPMENT SERVICES DIRECTOR, AFTER REVIEW OF ALTERNATE PLANS, DETAILS, OR OTHER DOCUMENTATION IN SUPPORT OF THE VARIATION.

Land Planning
Landscape
Architecture
Urban Design

NES

N.E.S. Inc.
619 N. Cascade Ave., Ste. 200
Colorado Springs, CO 80903

Tel. 719.471.0073
Fax 719.471.0267

www.nescolorado.com

© 2012. All Rights Reserved.

The Enclave at
Stonebridge
At Meridian
Ranch

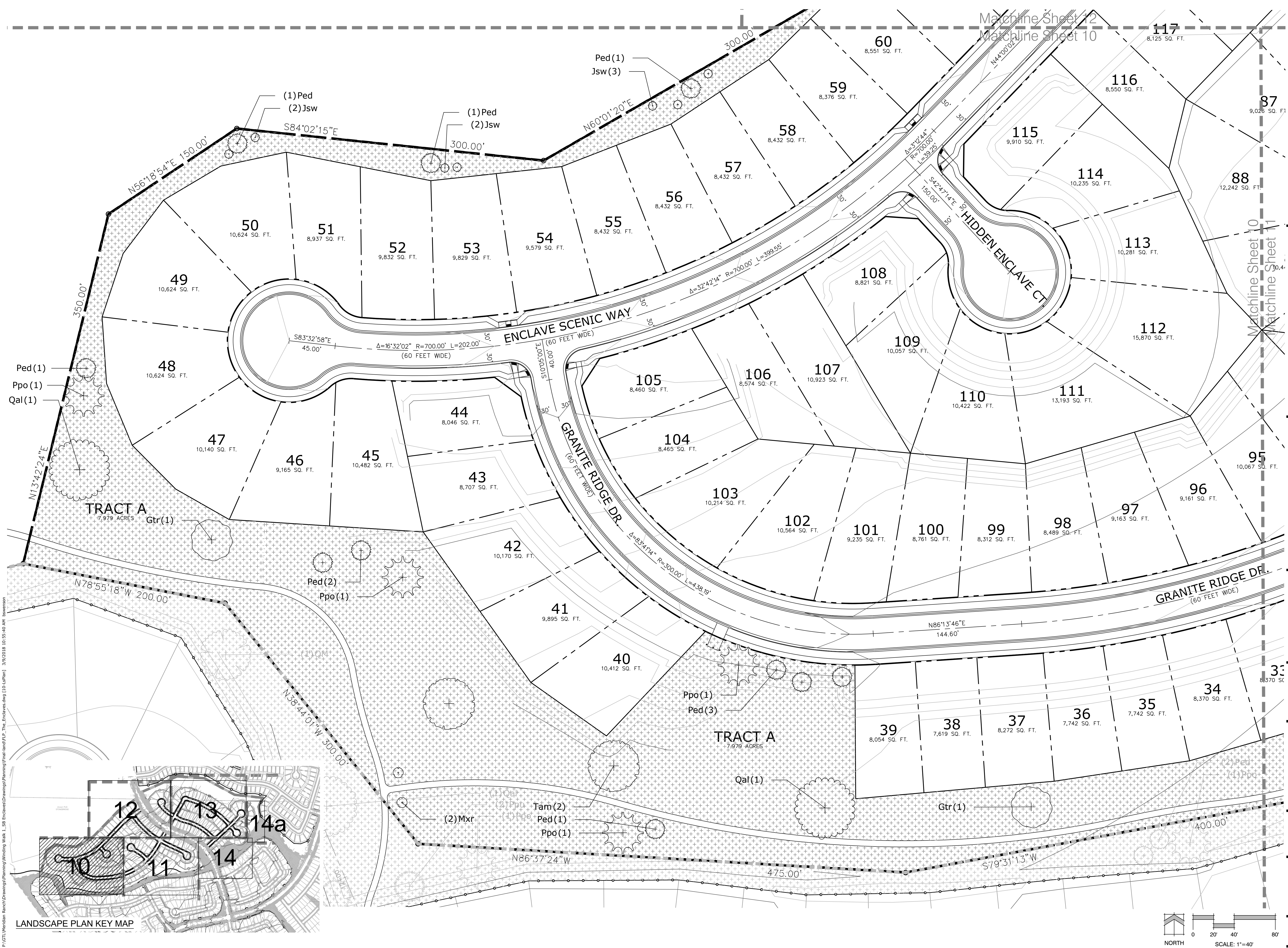
Final Landscape Plan

DATE: January 1, 2018
PROJECT MGR: A. Barlow
PREPARED BY: M. Swift

**LANDSCAPE
DETAILS**

9
of 15

PCD# PUDSP-18-003



P:\GTL\Meridian Ranch\Drawings\Planning\Final\18-0010\18-0010.dwg [10-Landscape] 3/9/2018 10:55:40 AM [revision]

PROJECT NUMBER: 18-0010
DATE: 3/9/2018
PROJECT MGR: A. Barlow
PREPARED BY: M. Swift

The Enclave at Stonebridge At Meridian Ranch
Final Landscape Plan

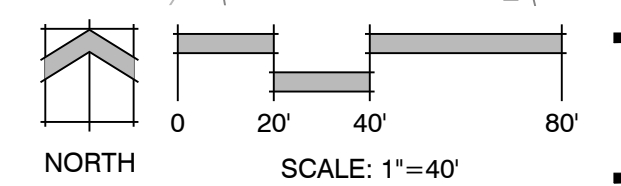
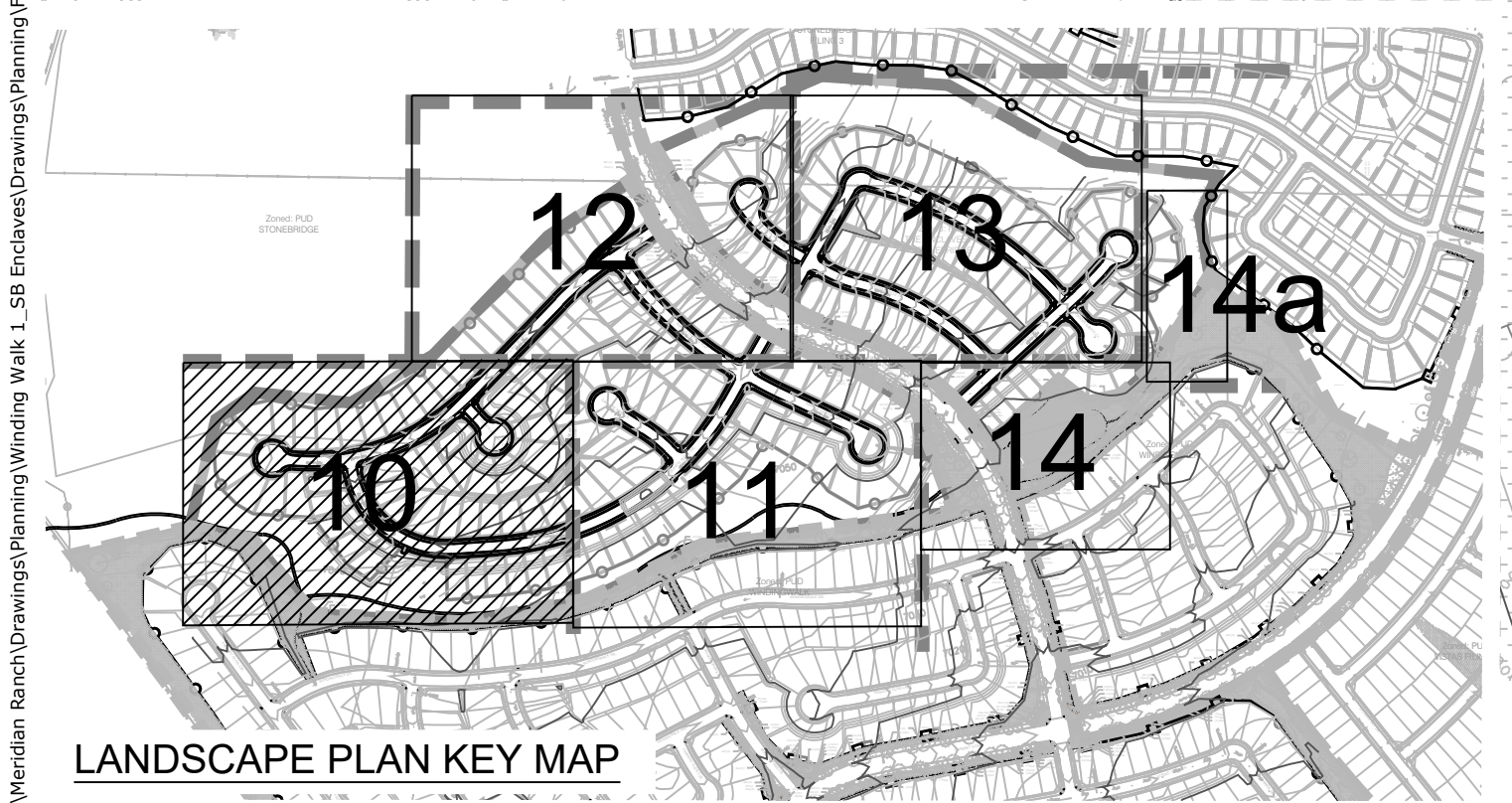
DATE: January 1, 2018
PROJECT MGR: A. Barlow
PREPARED BY: M. Swift

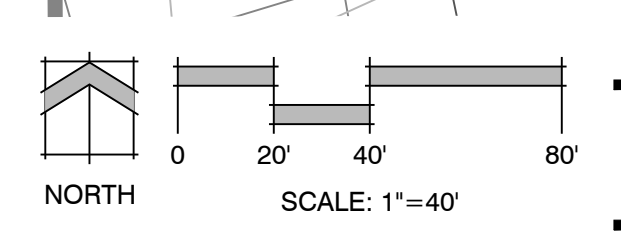
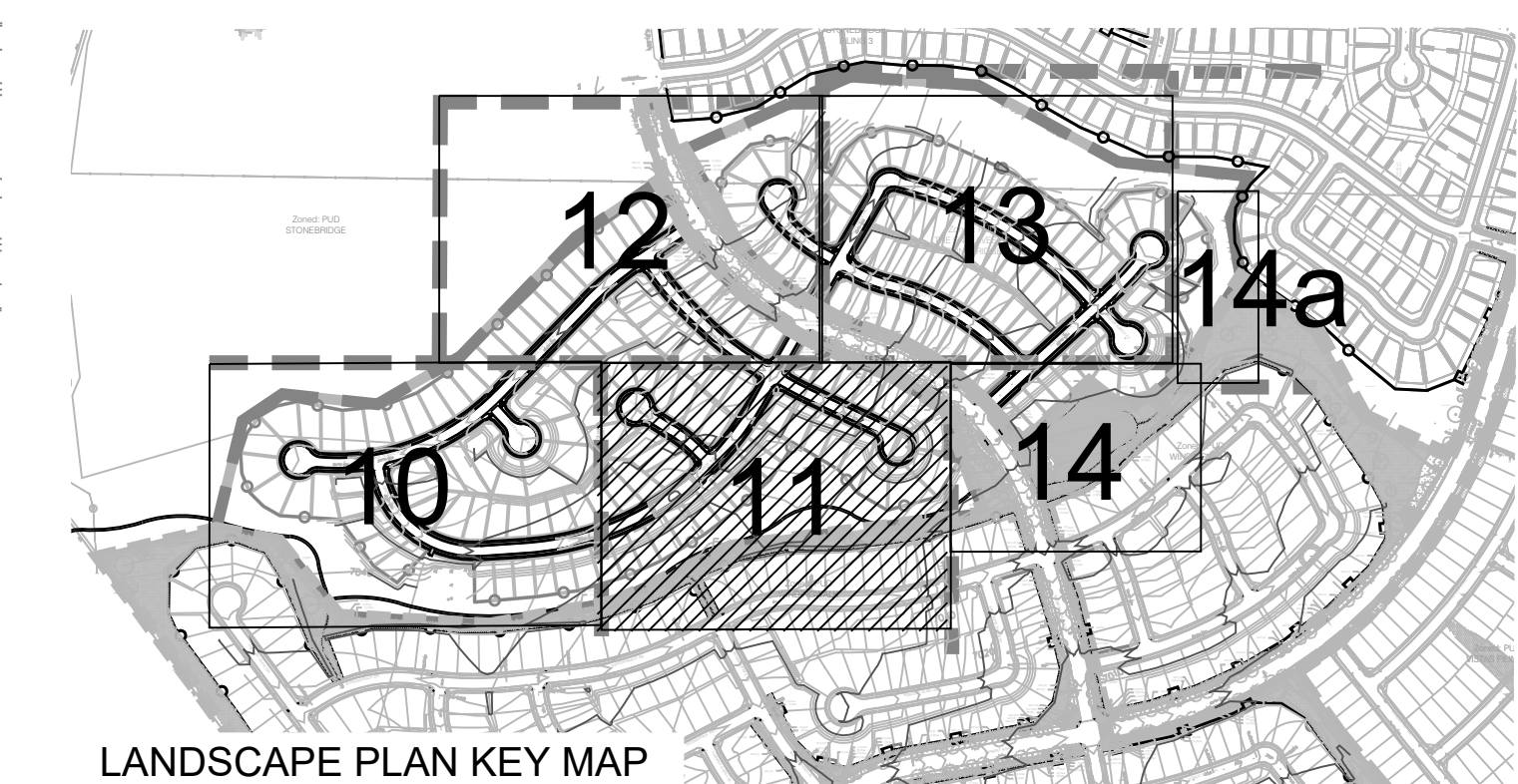
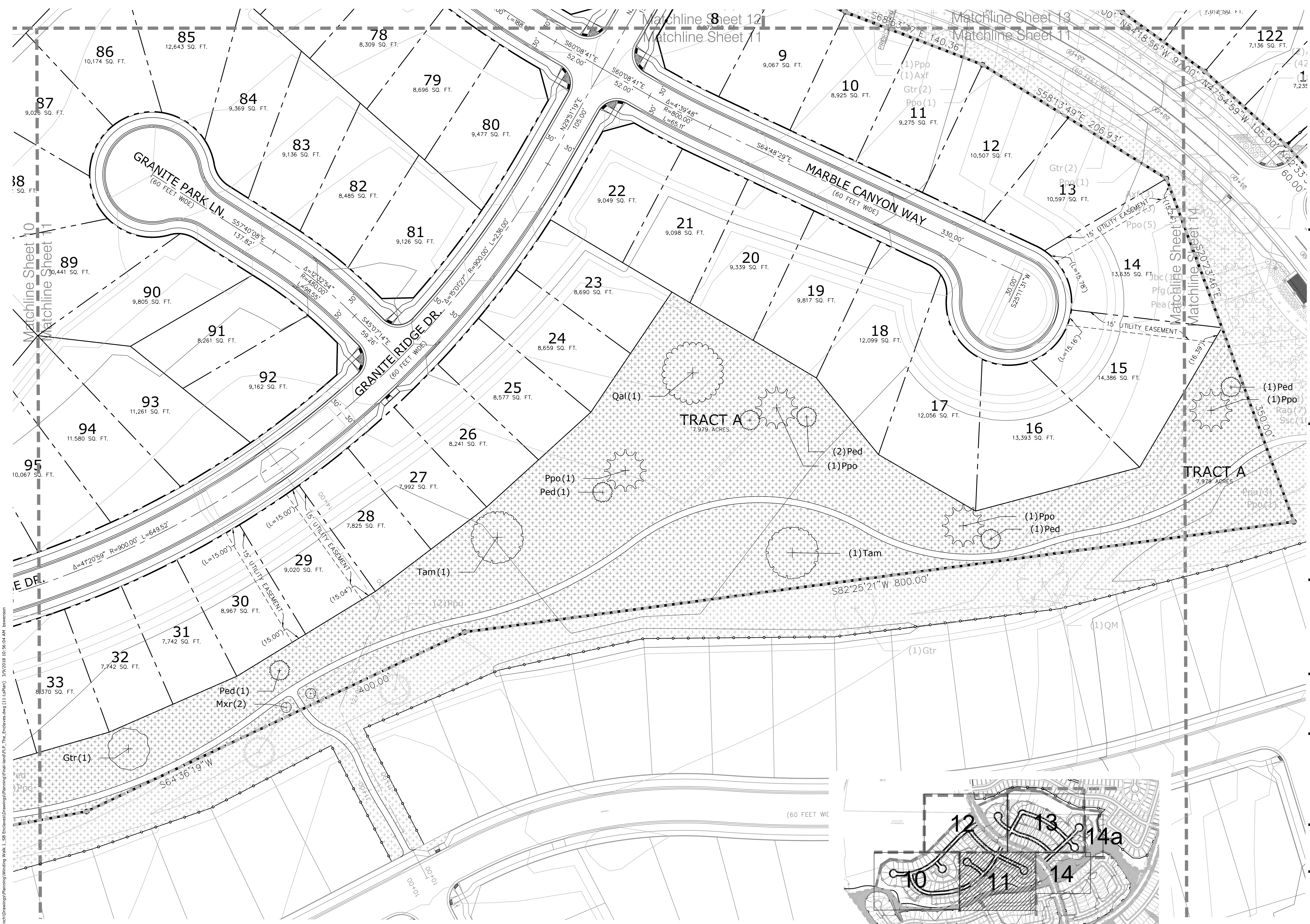
DATE	BY	DESCRIPTION

LANDSCAPE PLAN

10
OF 15

PCD# PUDSP-18-003





The Enclave at
Stonebridge
At Meridian
Ranch

Final Landscape Plan

DATE: January 1, 2018
PROJECT MGR: A. Barlow
PREPARED BY: M. Swift

DATE	BY	DESCRIPTION

LANDSCAPE PLAN

11
of 15
PCD# PUDSP-18-003

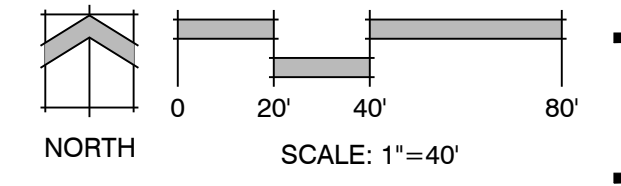
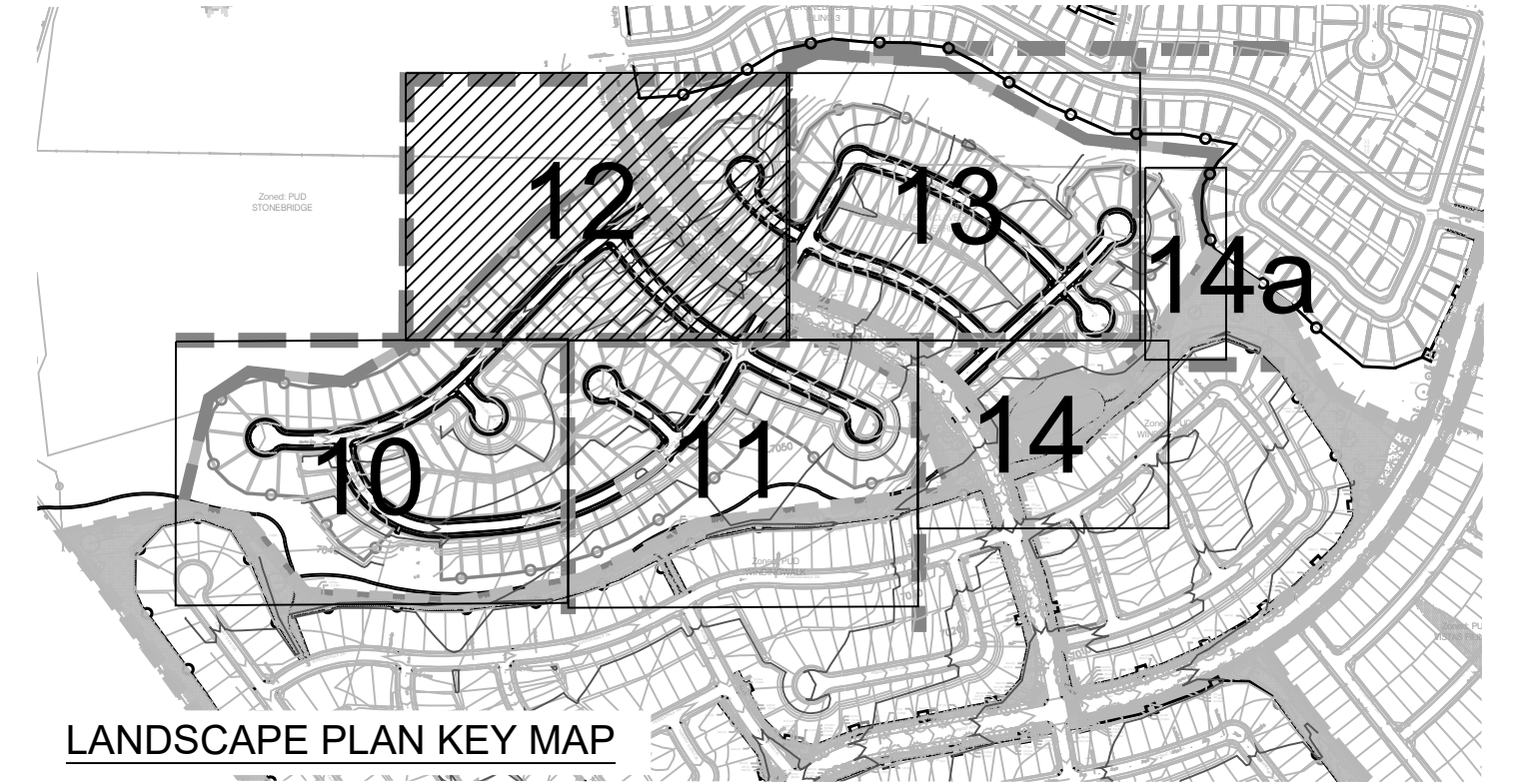
P:\GTL\Meridian Ranch\Drawings\Planning\Final\11-11.dwg [11-Landscape] 3/9/2018 10:56:04 AM bswinson

The Enclave at
Stonebridge
At Meridian
Ranch

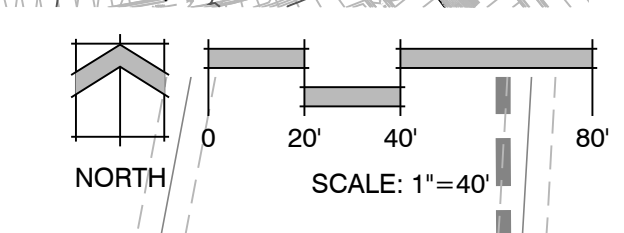
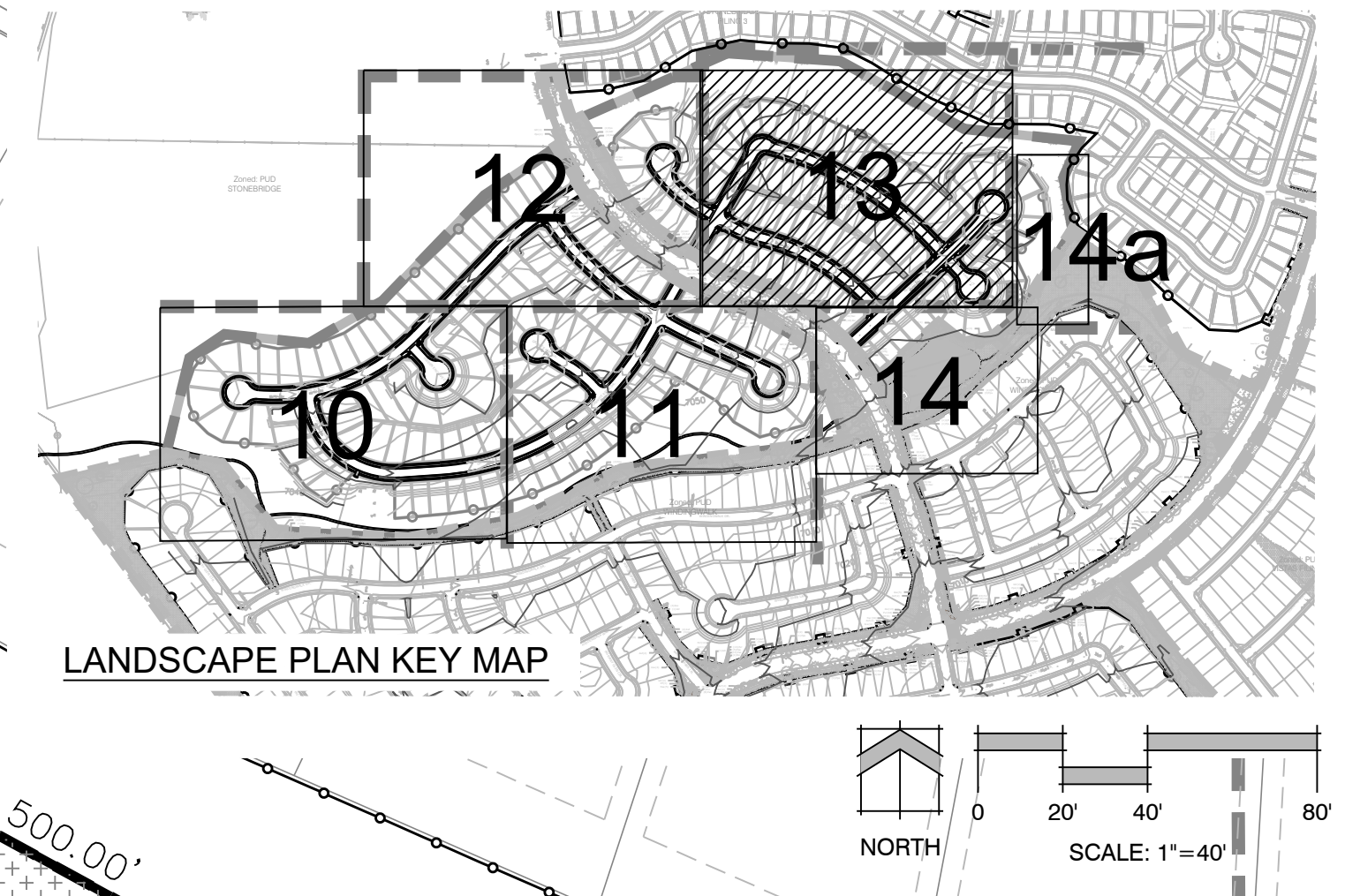
Final Landscape Plan

DATE: January 1, 2018
PROJECT MGR: A. Barlow
PREPARED BY: M. Swift

DATE	BY	DESCRIPTION



P:\GTL\Meridian Ranch\Drawings\Planning\Wiring\Wak_L_S8_Enclave\Drawings\Planning\Final\Handoff\12_The_Enclave.dwg (12-Landscape) 3/17/2018 10:56:39 AM bswinson



The Enclave at
Stonebridge
At Meridian
Ranch

Final Landscape Plan

DATE:	January 1, 2018
PROJECT MGR:	A. Barlow
PREPARED BY:	M. Swift

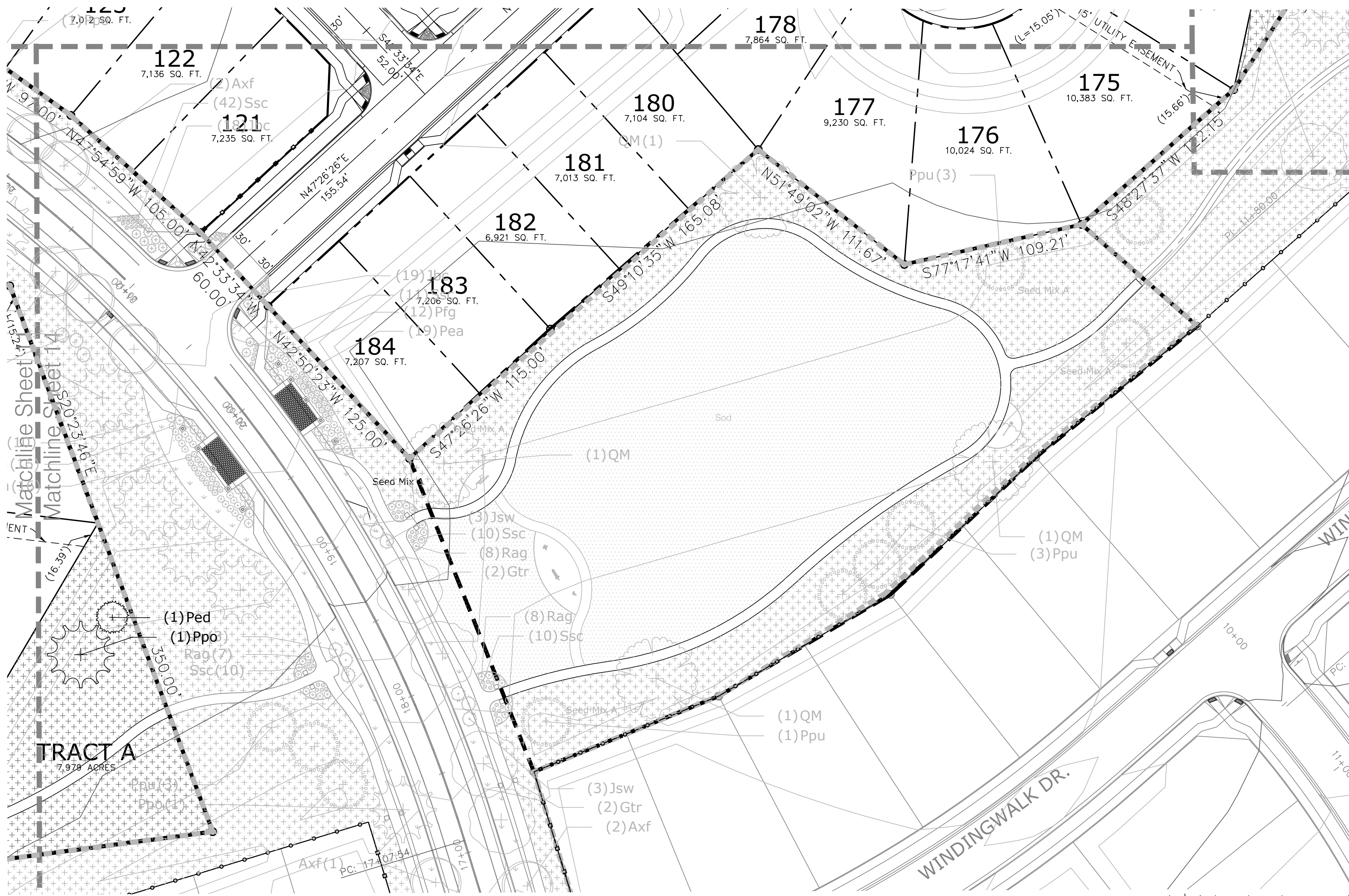
DATE	BY	DESCRIPTION

LANDSCAPE PLAN

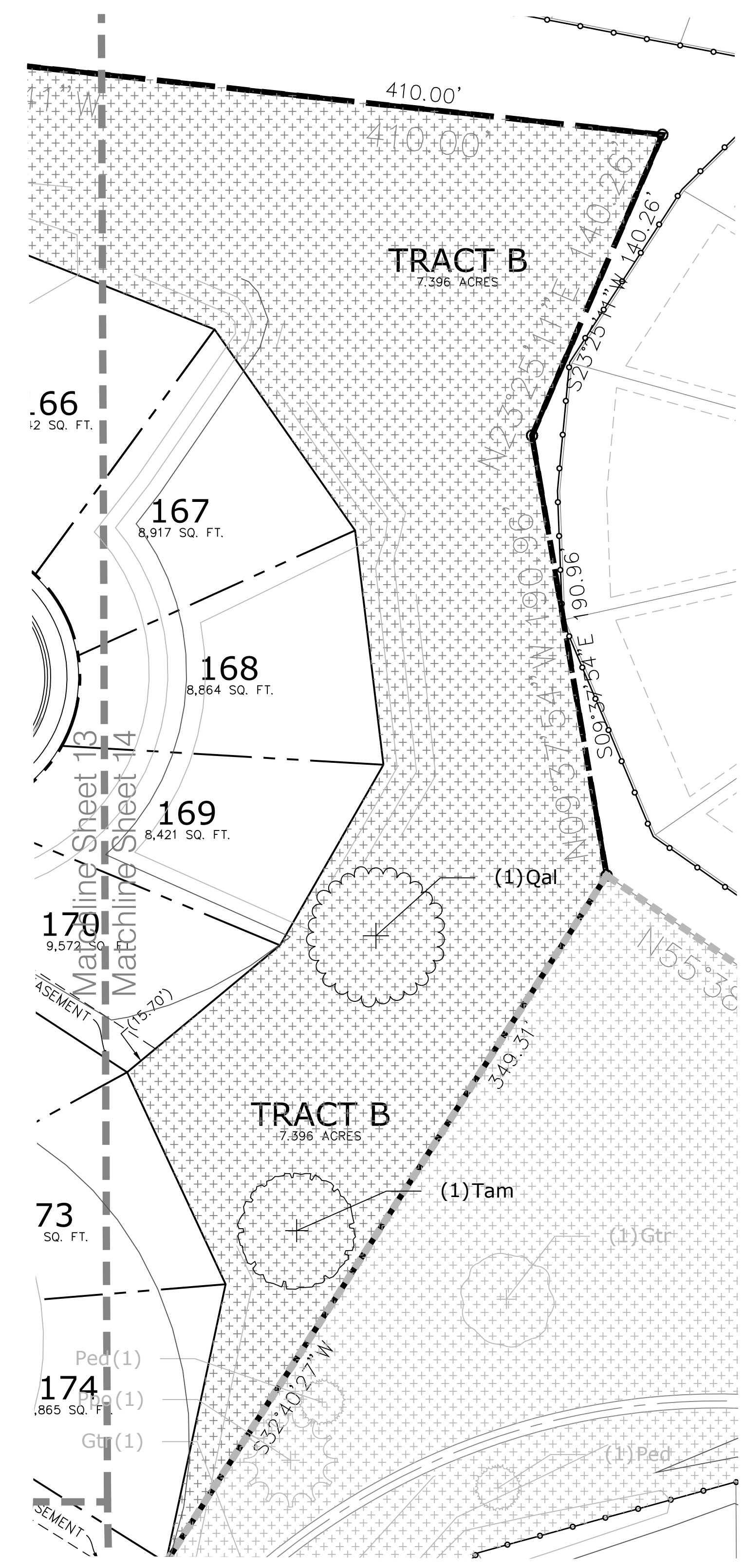
13
OF 15

PCD# PUDSP-18-003

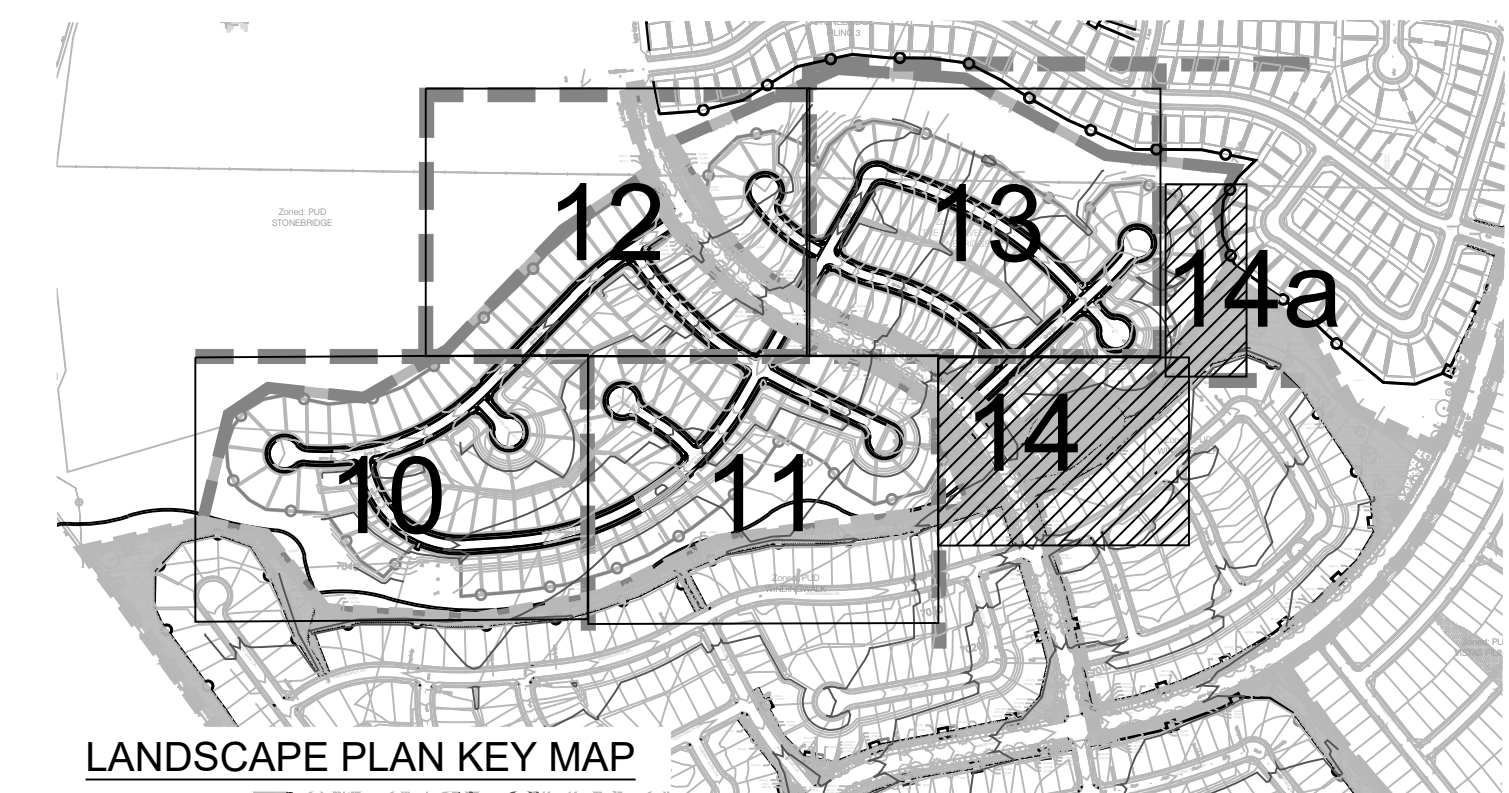
P:\GTL\Meridian Ranch\Drawings\Planning\Wiring\Wak_L_S8_Enclaves\Drawings\Planning\Final\Sheet13_The_Enclaves.dwg [13-up] 3/19/2018 10:56:55 AM bswenson



14 LANDSCAPE PLAN



14a LANDSCAPE PLAN



LANDSCAPE PLAN KEY MAP

The Enclave at Stonebridge At Meridian Ranch

Final Landscape Plan

DATE: January 1, 2018
PROJECT MGR: A. Barlow
PREPARED BY: M. Swift

DATE: BY: DESCRIPTION:

LANDSCAPE PLAN

14
OF 15

PCD# PUDSP-18-003