

PLANT SCHEDULE

DECIDUOUS TREES	CODE	BOTANICAL NAME / COMMON NAME	HEIGHT	WIDTH	SIZE	COND	QTY
	Gtr	Gleditsia triacanthos / Honey Locust	60'	40'	3" Cal.	B&B	3
	Qal	Quercus alba / White Oak	60'	60'	3" Cal.	B&B	8
	Tam	Tilia americana / American Linden	80'	50'	3" Cal.	B&B	8
EVERGREEN TREES	CODE	BOTANICAL NAME / COMMON NAME	HEIGHT	WIDTH	SIZE	COND	QTY
	Jsw	Juniperus scopulorum 'Wichita Blue' / Wichita Blue Juniper	20'	10'	6" HT	B&B	13
	Ped	Pinus edulis / Pinon Pine	30'	20'	6" HT	B&B	19
	Ppo	Pinus ponderosa / Ponderosa Pine	80'	40'	8" HT	B&B	11
ORNAMENTAL TREE	CODE	BOTANICAL NAME / COMMON NAME	HEIGHT	WIDTH	SIZE	COND	QTY
	Mxr	Malus x 'Red Jewel' / Crab Apple	15'	10'	2" Cal.	B&B	4
SHRUBS	CODE	BOTANICAL NAME / COMMON NAME	HEIGHT	WIDTH	SIZE	COND	QTY
	Jbc	Juniperus horizontalis 'Blue Chip' / Blue Chip Juniper	1'	8"	5 GAL	CONT	2
GRASSES	CODE	BOTANICAL NAME / COMMON NAME	HEIGHT	WIDTH	SIZE	COND	QTY
	Ssc	Schizachyrium scoparium / Little Bluestem Grass	4'	2.5'	1 GAL	CONT	1

SITE DATA

Land Use:	Single Family Residential
Number of Lots:	209 Lots
Total Area:	67.895 AC
Total Tract Area:	15.375 AC

TREE REQUIREMENTS

LDC Plant Category	Street (Classification)	Street Frontage Length	Required Trees	Provided Trees
(RB)	Rainbow Bridge (Local)	1,624'	55 (1 per 30')	66

- LANDSCAPE NOTES**
- CONTRACTOR TO UTILIZE STOCKPILED TOPSOIL FROM GRADING OPERATION AS AVAIL. TILL INTO TOP 6" OF SOIL.
 - FOR GRADES REFER TO CIVIL ENGINEERS DRAWINGS.
 - ALL TREES TO RECEIVE A BACK FILL MIXTURE OF 50% IMPORTED LOAMY TOPSOIL, 25% PEAT MOSS, AND 25% EXISTING SOIL.
 - A FULLY AUTOMATED SPRINKLER IRRIGATION SYSTEM WILL DRIP IRRIGATE ALL TREES. OTHERWISE SPECIFIED. MULCH RINGS TO BE 15" DIA. FOR 5 GALLON SHRUBS AND 36" DIA. FOR TREES NOT PLANTED IN BEDS, WITH THE EXCEPTION OF BLUEGRASS SOD AREAS IN WHICH TREES SHALL RECEIVE 60" DIA. MULCH RING. AVAILABLE FROM C&C SAND CEDAR MULCH (719)471-7222.
 - MINIMUM INSPECTIONS WILL INCLUDE SELECTION OF SPECIMEN PLANT MATERIALS AT CONTRACTOR'S NURSERY OR WHOLESALER, APPROVAL OF PLANT LOCATION STAKES BEFORE PLANT MATERIALS ARE INSTALLED, "PUNCH LIST" SITE INSPECTION, AND FINAL INSPECTION SITE VISITS.
 - PRE-CONSTRUCTION MEETING/SELECTION OF PLANT MATERIALS AT THE NURSERY AND REVIEW OF SPECIFIED LANDSCAPE/IRRIGATION SUBMITTALS.
 - IRRIGATION MAINLINE INSPECTION - PRESSURE TEST AND REVIEW OF MODEL
 - IRRIGATION 95% / PUNCH INSPECTION.
 - IRRIGATION FINAL ACCEPTANCE INSPECTION.
 - LANDSCAPE 50% INSPECTION - 1/2 THROUGH ENTIRE PROJECT
 - LANDSCAPE 95% INSPECTION/ PUNCH INSPECTION.
 - LANDSCAPE FINAL ACCEPTANCE INSPECTION AND COUNTY LANDSCAPE AND IRRIGATION AFFIDAVITS.
 - PLANTS SHALL BE WARRANTED FOR THE DURATION OF TWO FULL YEARS AFTER THE INSTALLATION (WARRANTY SHALL COVER 100% OF THE REPLACEMENT COST).
 - ALL PLANTS TO RECEIVE 3 INCH DEPTH OF SHREDDED CEDAR WOOD MULCH UNLESS OTHERWISE SPECIFIED. MULCH RINGS TO BE 15" DIA. FOR 5 GALLON SHRUBS AND 36" DIA. FOR TREES NOT PLANTED IN BEDS, WITH THE EXCEPTION OF BLUEGRASS SOD AREAS IN WHICH TREES SHALL RECEIVE 60" DIA. MULCH RING. AVAILABLE FROM C&C SAND CEDAR MULCH (719)471-7222.
 - CONTRACTOR IS RESPONSIBLE FOR INSTALLING ALL PLANT MATERIAL SHOWN ON THIS PLAN. IF ANY DISCREPANCIES ARE FOUND BETWEEN THE LANDSCAPE PLAN AND THE PLANT SCHEDULE, THE QUANTITIES SHOWN ON THE LANDSCAPE PLAN SUPERSEDE THOSE SHOWN ON THE PLANT SCHEDULE.
 - CONTACT THE LANDSCAPE ARCHITECT FOR ANY DISCREPANCIES WITH THE DRAWINGS OR VARIATIONS IN THE FIELD.
 - CALL FOR UTILITY LOCATIONS PRIOR TO ANY PLANT INSTALLATION.
 - LANDSCAPING IN THE SIGHT TRIANGLES SHALL NOT EXCEED 18" IN HEIGHT.
 - FENCING DETAILS ARE TYPICAL AND MAY BE SUBJECT TO MINOR VARIATIONS IN MATERIALS. ANY VARIATION SHALL BE AUTHORIZED BY THE DEVELOPMENT SERVICES DIRECTOR, AFTER REVIEW OF ALTERNATE PLANS, DETAILS, OR OTHER DOCUMENTATION IN SUPPORT OF THE VARIATION.

Land Planning
Landscape Architecture
Urban Design

NES

N.E.S. Inc.
619 N. Cascade Ave., Ste. 200
Colorado Springs, CO 80903

Tel. 719.471.0073
Fax 719.471.0267

www.nescolorado.com

© 2012. All Rights Reserved.

PLANNER/LANDSCAPE ARCHITECT

LANDSCAPE ARCHITECT

PROJECT INFO

SCALE

REVISION

SHEET TITLE

SHEET NUMBER

PLANTING

PLANTING

The Enclave at Stonebridge At Meridian Ranch

Final Landscape Plan

DATE: January 1, 2018
PROJECT MGR: A. Barlow
PREPARED BY: M. Swift

DATE	BY	DESCRIPTION
7/20/2018	JSB	Per County Comments
8/20/2018	MS	Per County Comments

LANDSCAPE DETAILS

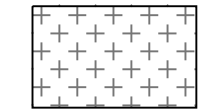
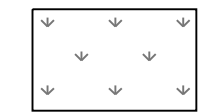
9
of 15

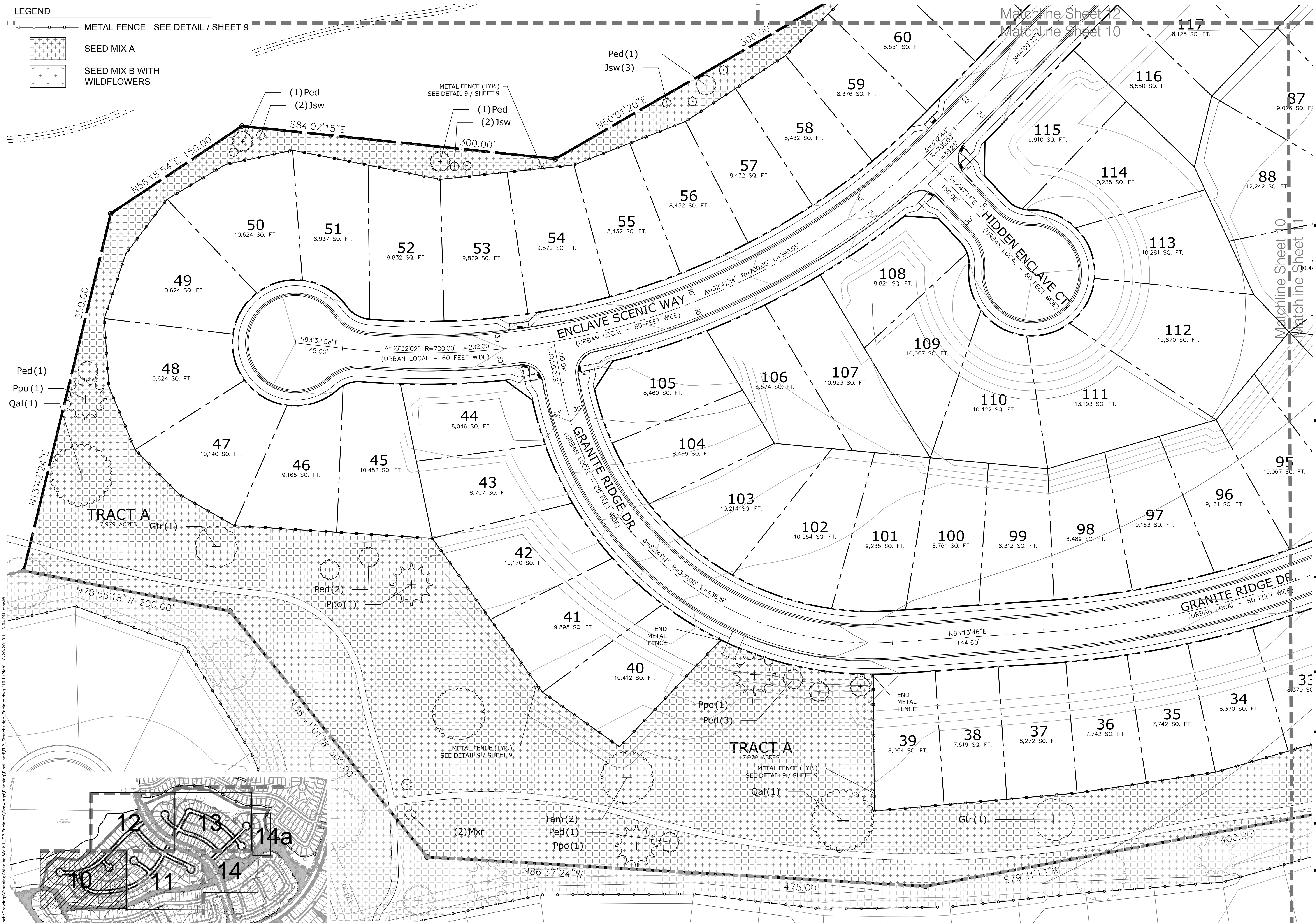
PCD# PUDSP-18-003

P:\GTL\Meridian Ranch\Drawings\Planning\Final\Sheet\CD - Stonebridge - Enclave.dwg (5-Detail) 8/20/2018 11:17:51 AM msawf

LEGEND

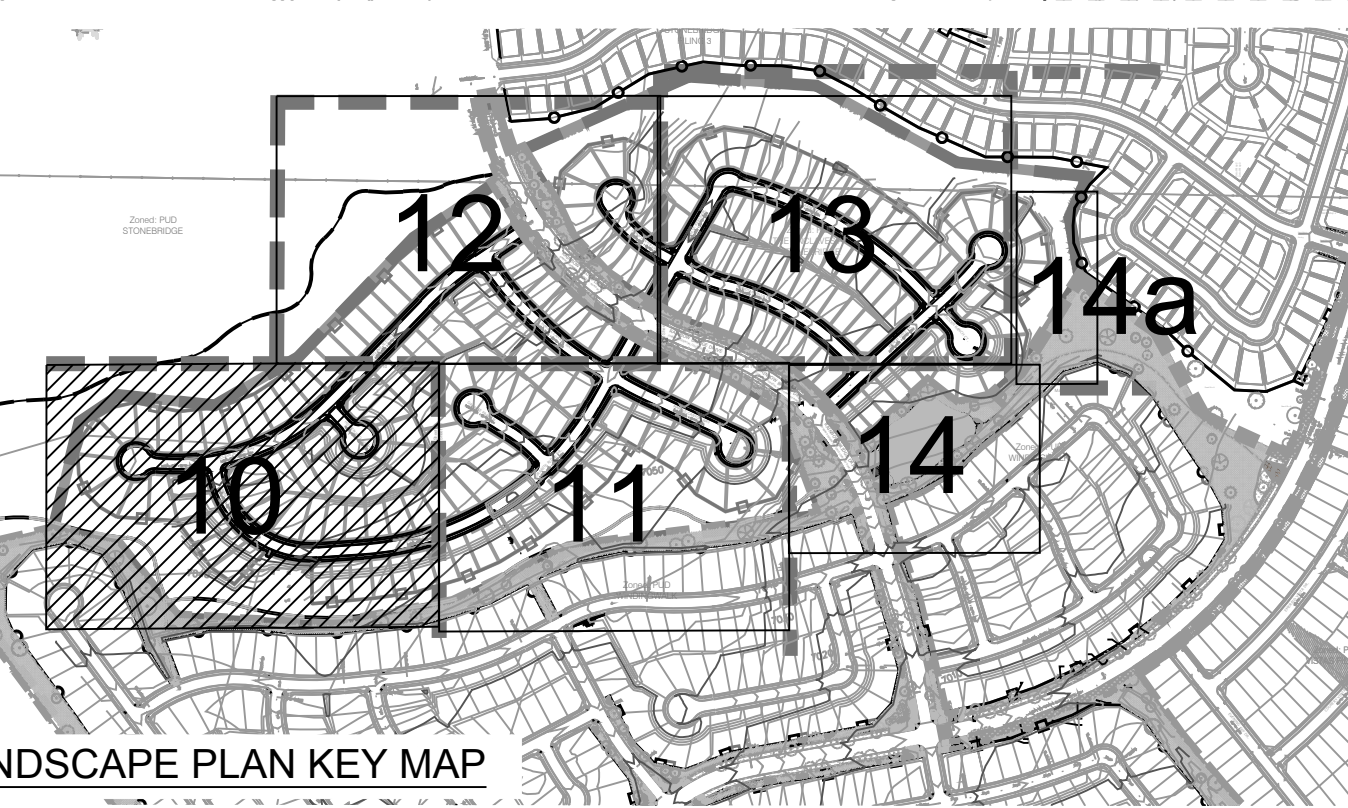
METAL FENCE - SEE DETAIL / SHEET 9

-  SEED MIX A
-  SEED MIX B WITH WILDFLOWERS




P:\GTL\Meridian Ranch\Drawings\Planning\Final\Plan\10 - Stonebridge_Enclave.dwg [10-Lgplan] 8/20/2018 11:58:04 AM mswift

LANDSCAPE PLAN KEY MAP



Land Planning
Landscape Architecture
Urban Design



N.E.S. Inc.
619 N. Cascade Ave., Ste. 200
Colorado Springs, CO 80903
Tel. 719.471.0073
Fax 719.471.0267
www.nescolorado.com
© 2012. All Rights Reserved.

The Enclave at Stonebridge At Meridian Ranch
Final Landscape Plan

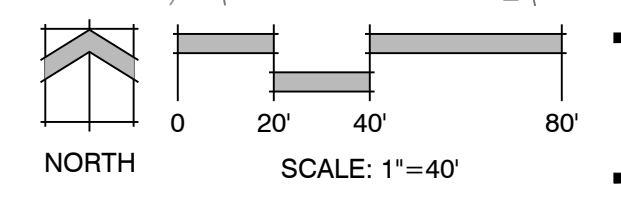
DATE: January 1, 2018
PROJECT MGR: A. Barlow
PREPARED BY: M. Swift

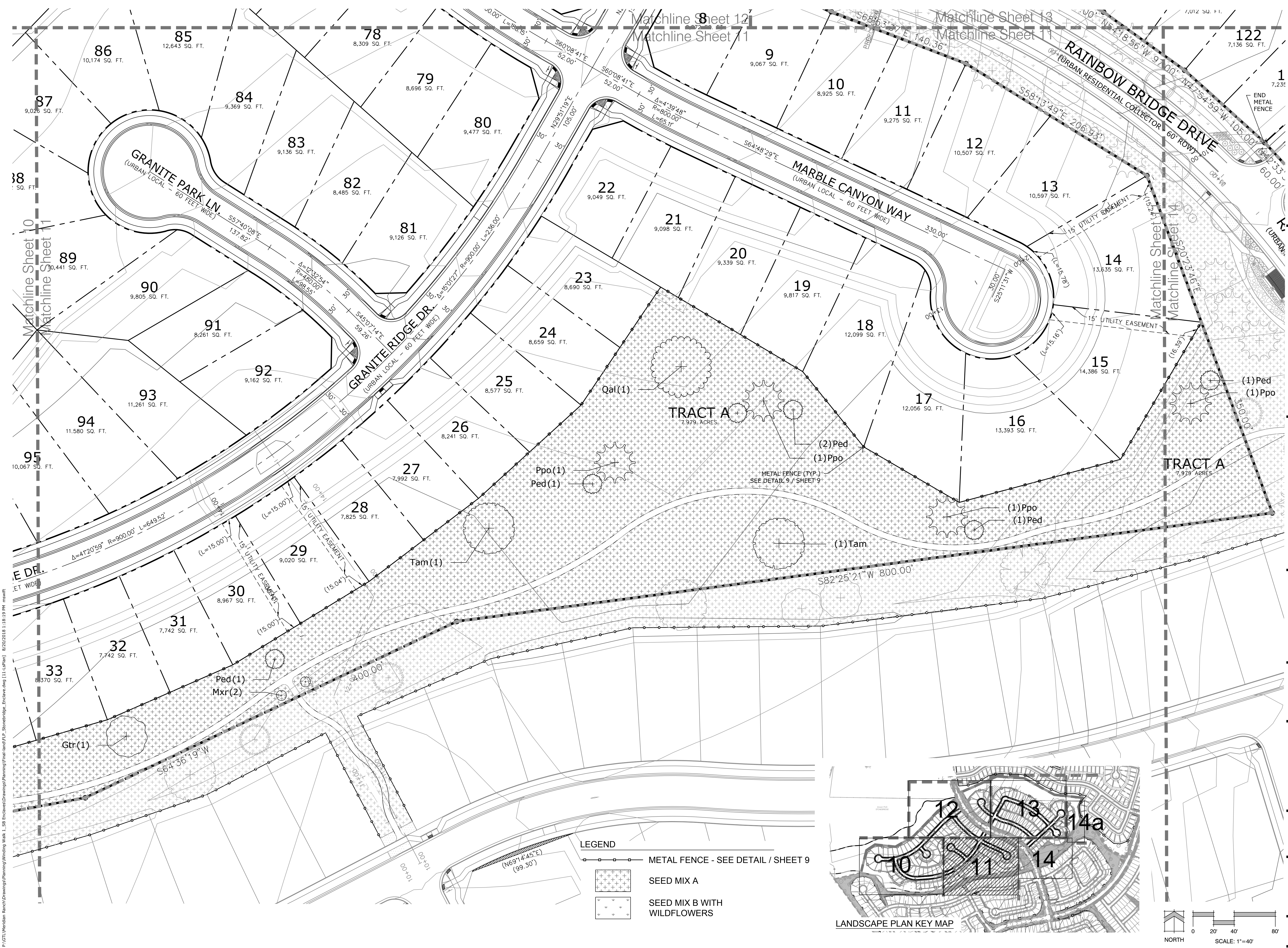
DATE	BY	DESCRIPTION
7/20/2018	JSB	Per County Comments
8/20/2018	MS	Per County Comments

LANDSCAPE PLAN

10 OF 15

PCD# PUDSP-18-003





The Enclave at Stonebridge At Meridian Ranch

Final Landscape Plan

DATE:	January 1, 2018
PROJECT MGR:	A. Barlow
PREPARED BY:	M. Swift

DATE	BY	DESCRIPTION
7/20/2018	JSB	Per County Comments
8/20/2018	MS	Per County Comments

LANDSCAPE PLAN

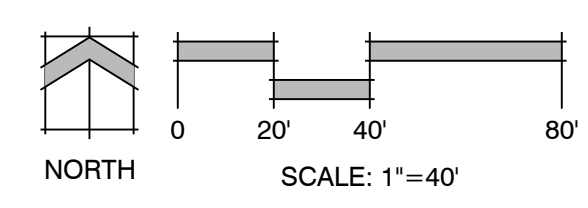
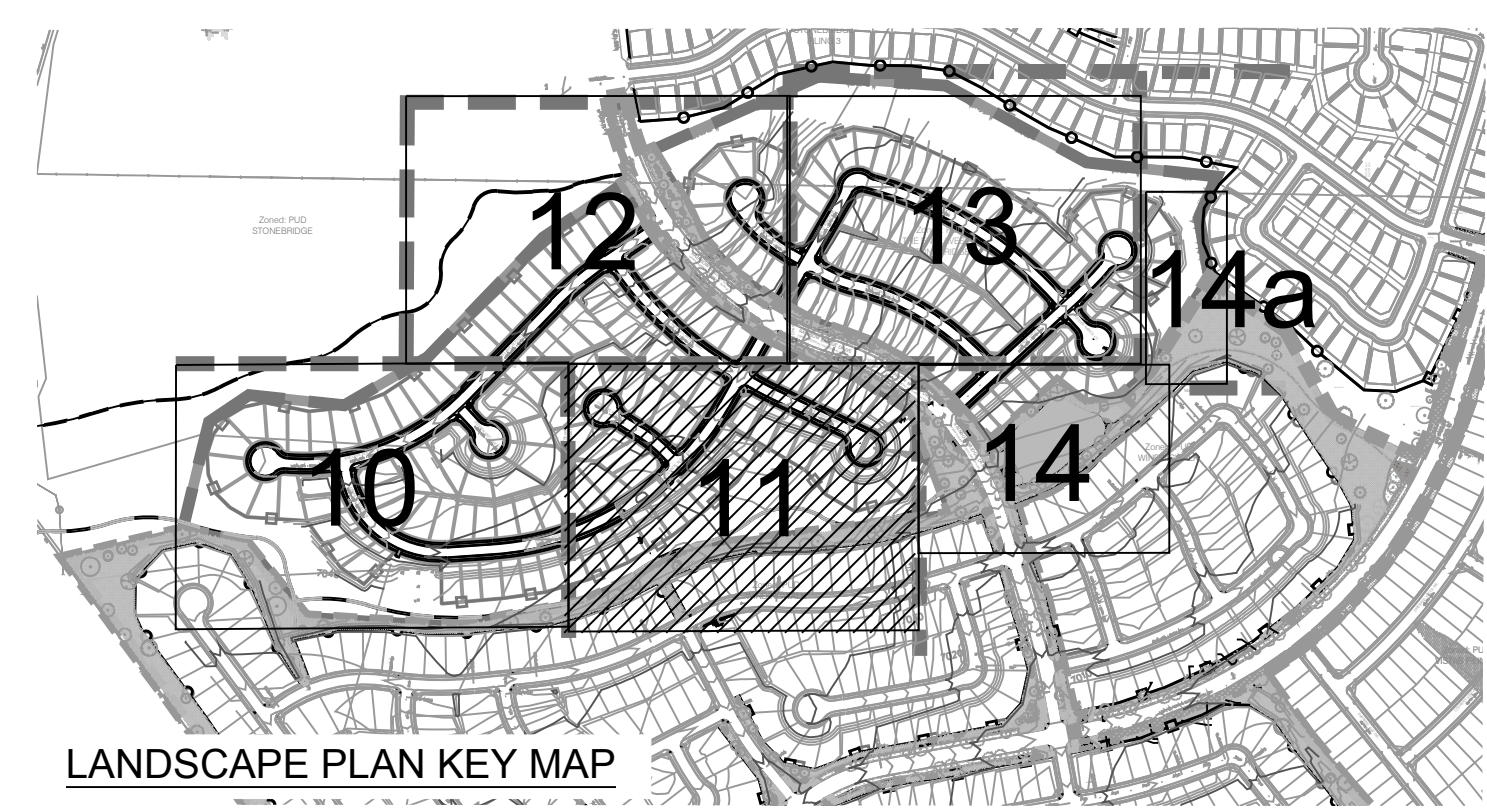
11

of 15

PCD# PUDSP-18-003

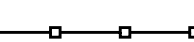
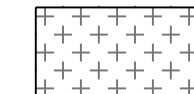

LEGEND

- METAL FENCE - SEE DETAIL / SHEET 9
- SEED MIX A
- SEED MIX B WITH WILDFLOWERS




P:\GTL\Meridian Ranch\Drawings\Planning\Wiring Walk - SE Enclave\Drawings\Planning\Final\Plan\11-11.dwg 8/20/2018 11:18:19 AM mswift

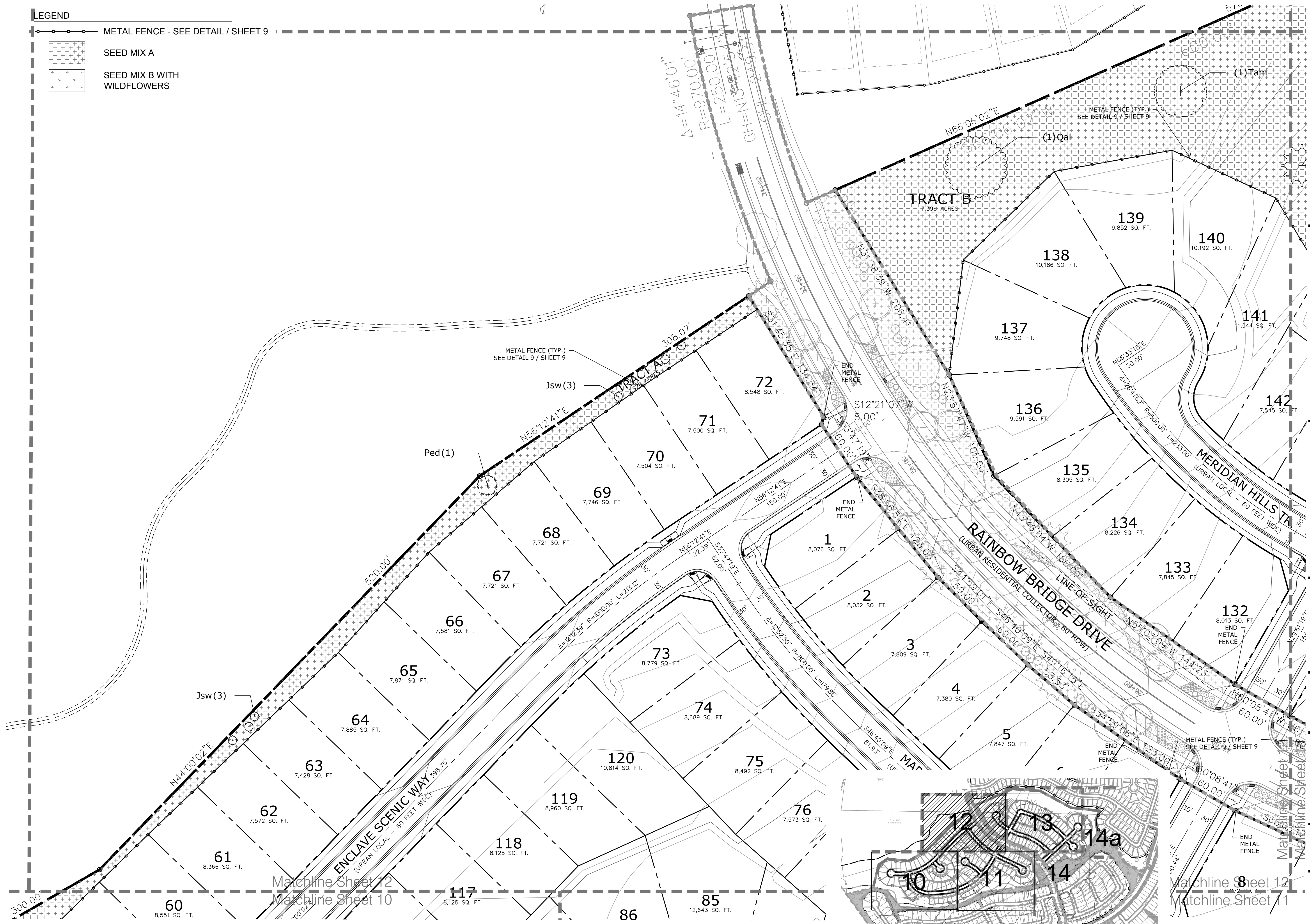
LEGEND

-  METAL FENCE - SEE DETAIL / SHEET 9
-  SEED MIX A
-  SEED MIX B WITH WILDFLOWERS

Land Planning
Landscape Architecture
Urban Design



N.E.S. Inc.
619 N. Cascade Ave., Ste. 200
Colorado Springs, CO 80903
Tel. 719.471.0073
Fax 719.471.0267
www.nescolorado.com
© 2012. All Rights Reserved.



The Enclave at Stonebridge At Meridian Ranch
Final Landscape Plan

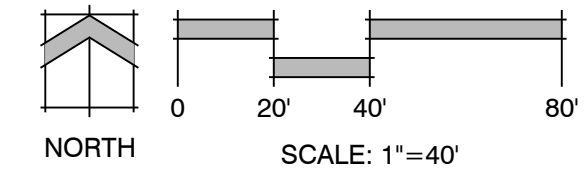
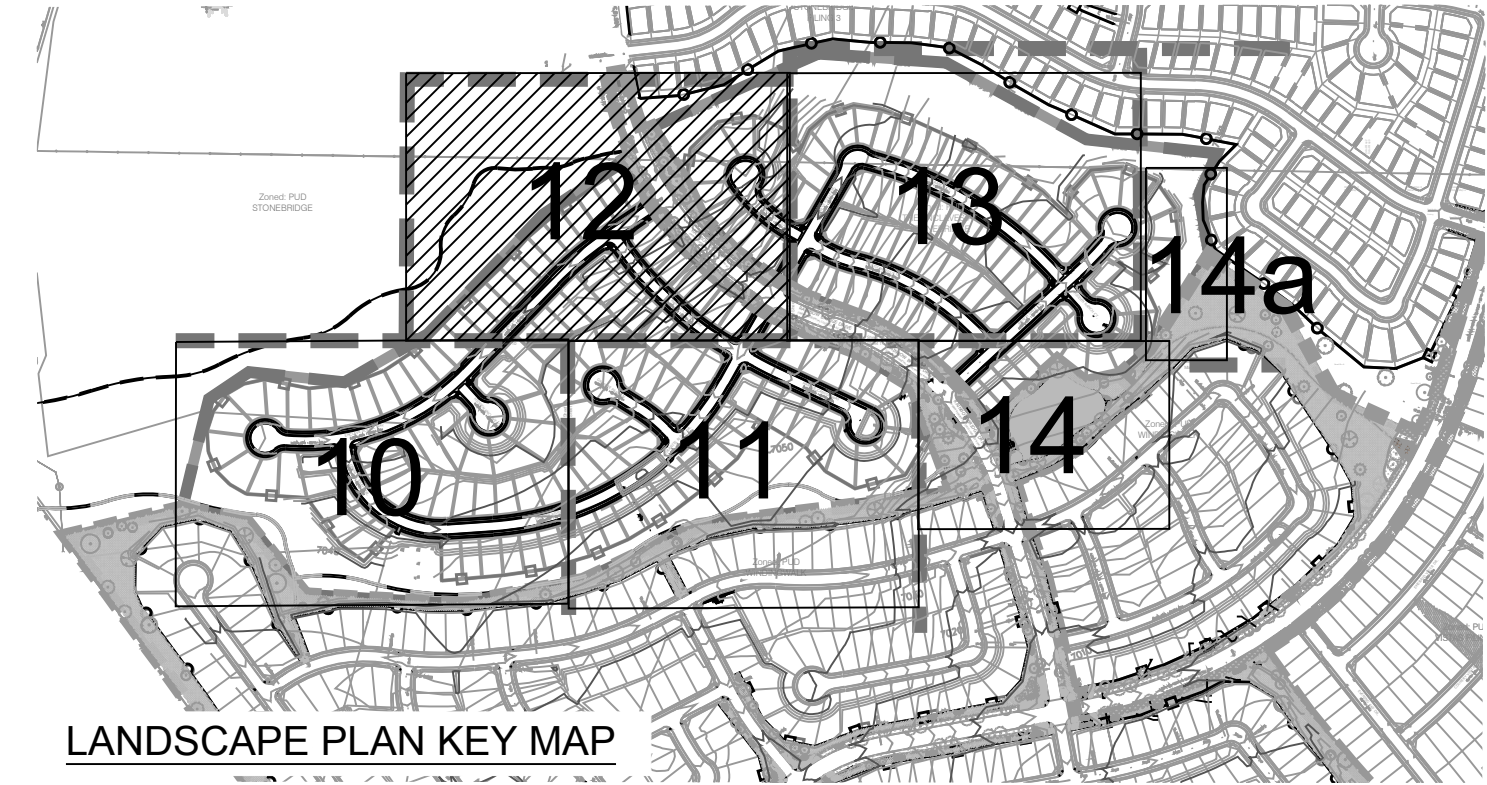
DATE:	January 1, 2018
PROJECT MGR:	A. Barlow
PREPARED BY:	M. Swift

DATE	BY	DESCRIPTION
7/20/2018	JSB	Per County Comments
8/20/2018	MS	Per County Comments

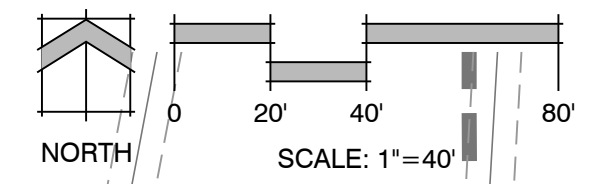
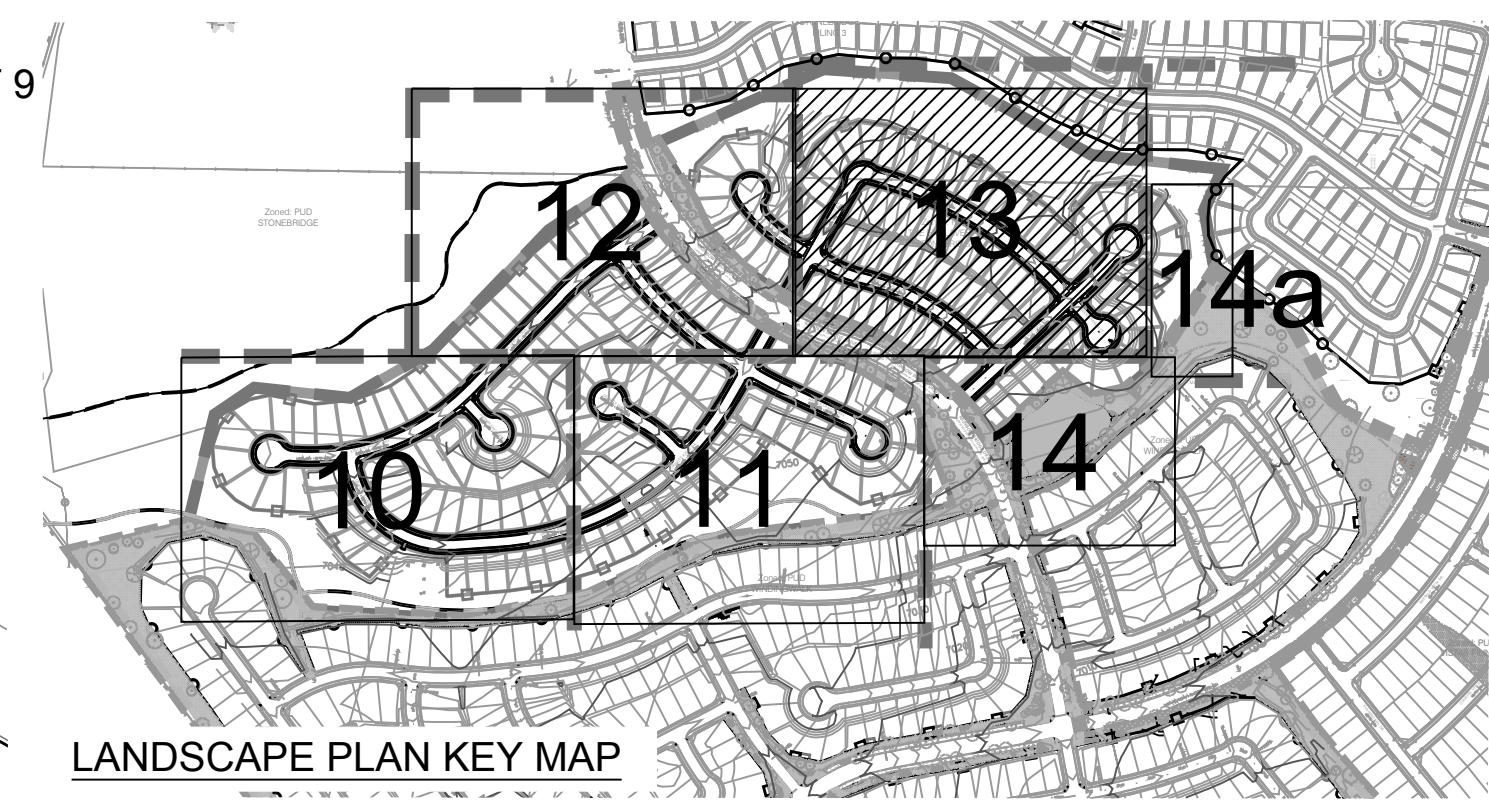
LANDSCAPE PLAN

12
OF 15

PCD# PUDSP-18-003

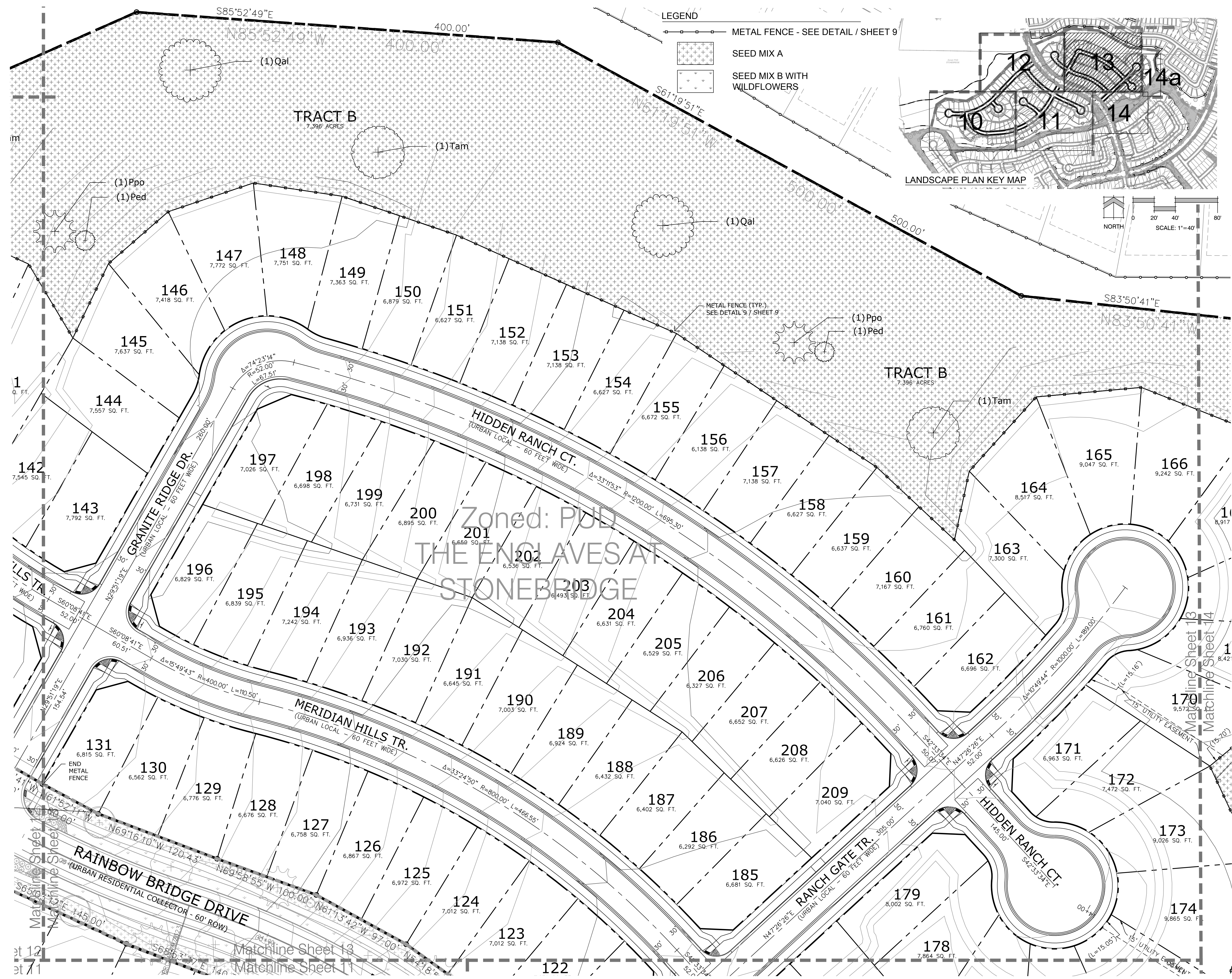


P:\GTL\Meridian Ranch\Drawings\Planning\Wiring\Wak_L_S8_Enclave\Drawings\Planning\Final\Sheet 12 - Stonebridge_Enclave.dwg 8/20/2018 11:33:34 AM mswift



LEGEND

- METAL FENCE - SEE DETAIL / SHEET 9
- SEED MIX A
- SEED MIX B WITH WILDFLOWERS



Zoned: PUD
THE ENCLAVES AT
STONEBRIDGE

The Enclave at
Stonebridge
At Meridian
Ranch

Final Landscape Plan

DATE:	January 1, 2018
PROJECT MGR:	A. Barlow
PREPARED BY:	M. Swift

DATE	BY	DESCRIPTION
7/20/2018	JSB	Per County Comments
8/20/2018	MS	Per County Comments

LANDSCAPE PLAN

13
OF 15

PCD# PUDSP-18-003

P:\GTL\Meridian Ranch\Drawings\Planning\Final\Sheet 13 - Stonebridge_Enclave.dwg (13-Landscape) 8/20/2018 11:49:49 AM mswift

The Enclave at
Stonebridge
At Meridian
Ranch

Final Landscape Plan

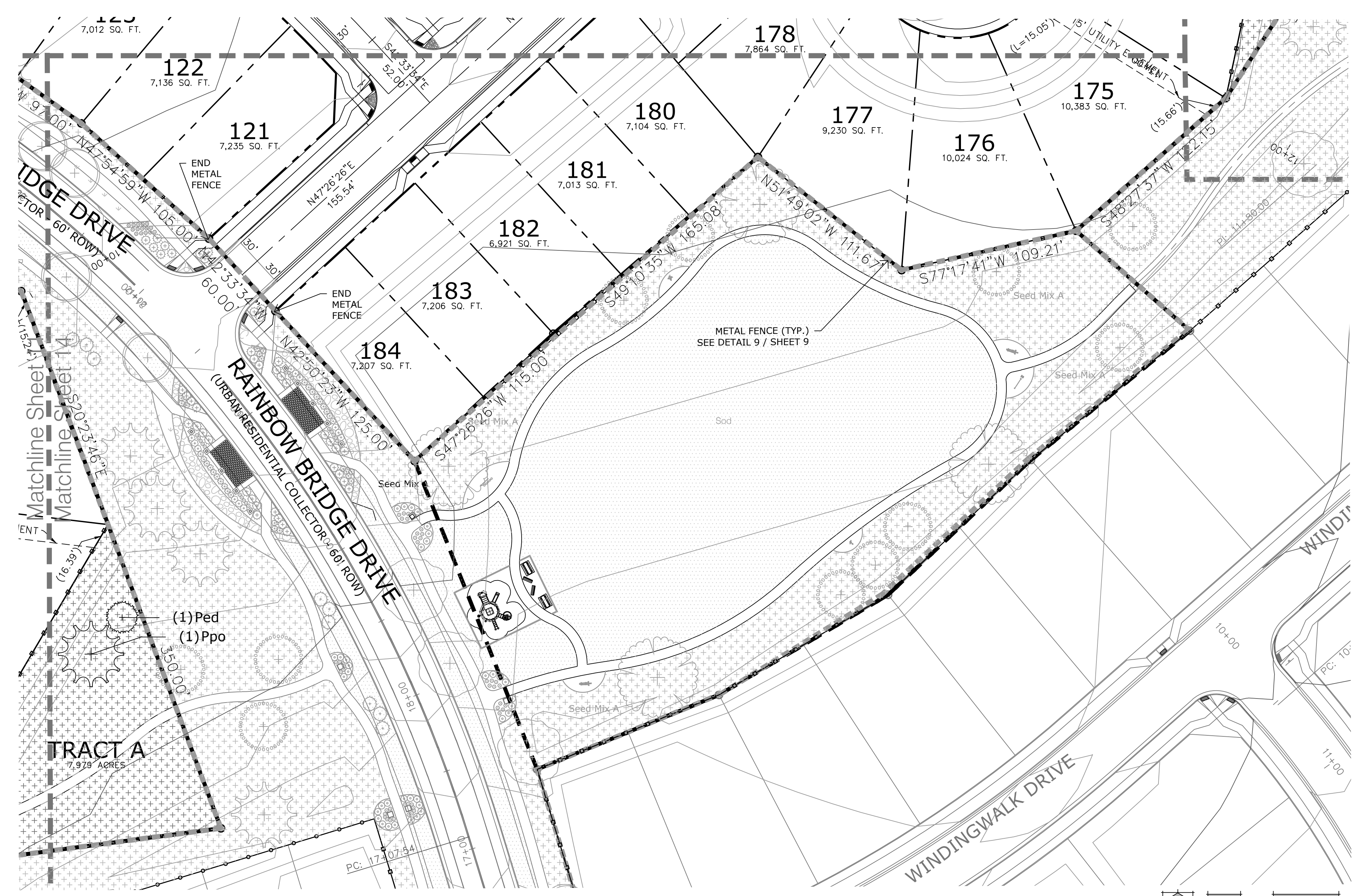
DATE: January 1, 2018
PROJECT MGR: A. Barlow
PREPARED BY: M. Swift

DATE	BY	DESCRIPTION
7/20/2018	JSB	Per County Comments
8/20/2018	MS	Per County Comments

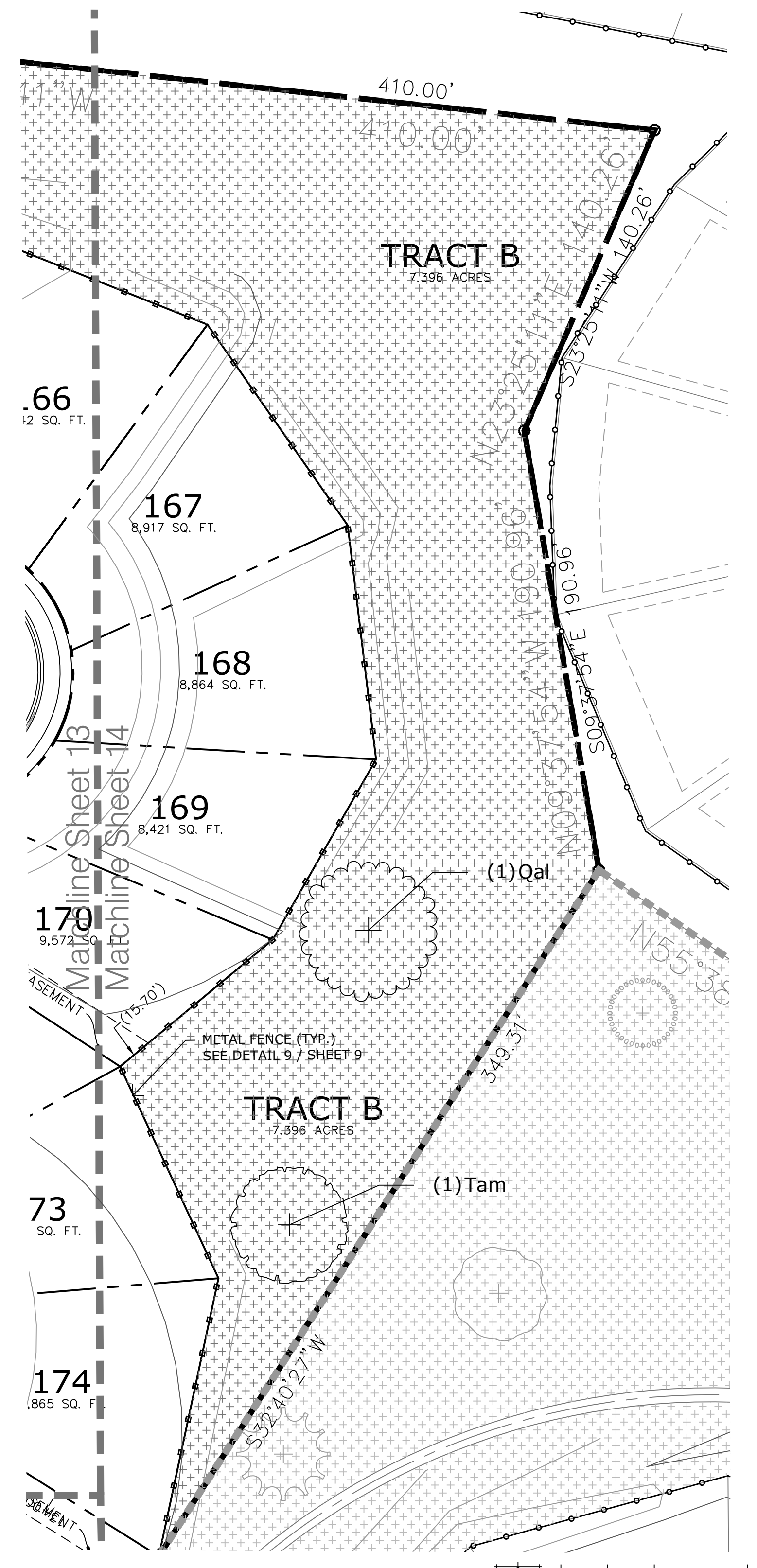
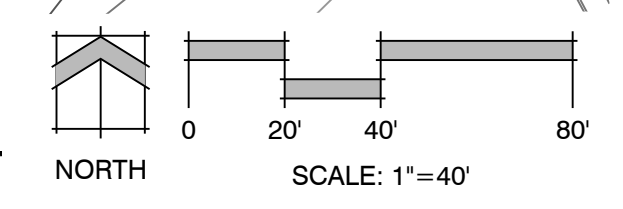
LANDSCAPE PLAN

14
OF 15

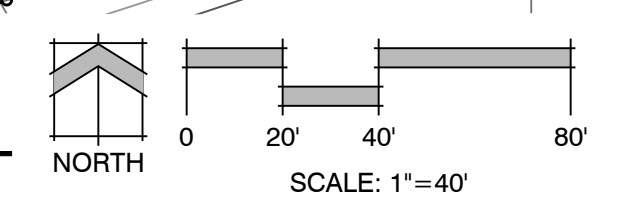
PCD# PUDSP-18-003

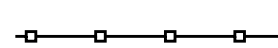
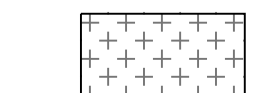



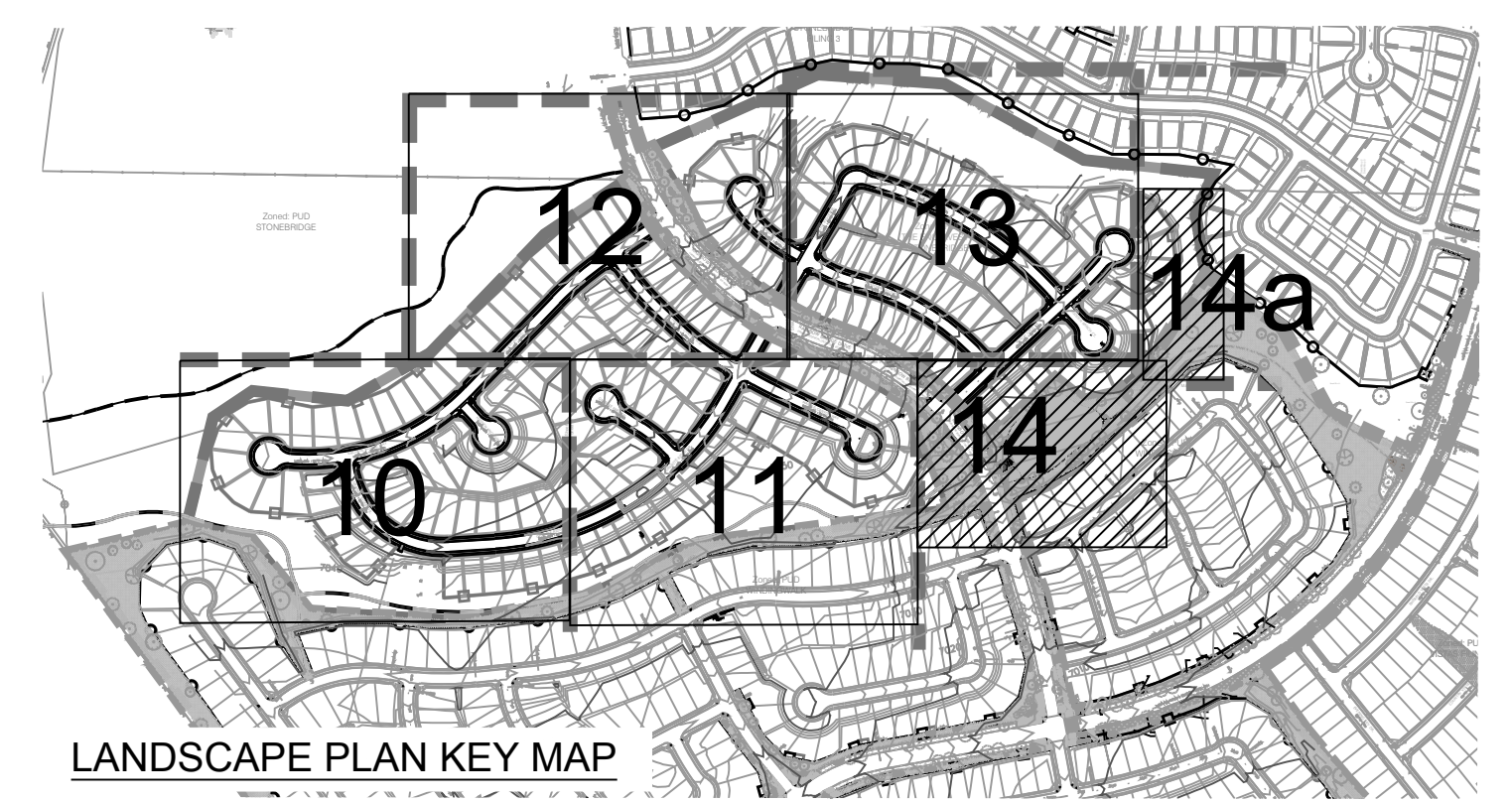
14 LANDSCAPE PLAN



14a LANDSCAPE PLAN



- LEGEND
-  METAL FENCE - SEE DETAIL / SHEET 9
 -  SEED MIX A
 -  SEED MIX B WITH WILDFLOWERS



LANDSCAPE PLAN KEY MAP

P:\GTL\Meridian Ranch\Drawings\Planning\Winding Walk_LSI_Enclaves\Drawings\Planning\Final\14a.dwg [14-Landscape] 8/20/2018 11:59:09 AM mswift