



One Denver Technology Center
5251 DTC Parkway, Suite 420
Greenwood Village, CO 80111

TEL 303.721.6932

www.GarverUSA.com

October 17, 2022

El Paso County Development Services
2880 International Circle
Colorado Springs, CO 80910
ATTN: Planning Department

**RE: Letter of Intent
Widefield Water and Sanitation District Upper West to East Water Transmission Line
and 8-inch Water Distribution Main Replacement on Metropolitan Street**

To Whom It May Concern:

Intro and Background

In conformity with El Paso County and the State of Colorado, and upon Administrative Determination No. 22-034 of the El Paso County Planning and Community Development Department that the proposed project is not subject to the County's 1041 Regulations and, therefore, will not require a 1041 permit, we, on behalf of the Owner, Widefield Water and Sanitation District ("District"), are providing this letter of intent for the proposed Upper West to East (UW2E) Water Transmission Line and 8-inch Water Distribution Main Replacement on Metropolitan Street project.

Project Scope Description

The overall project scope is the replacement of existing 8-inch diameter asbestos cement (AC) distribution line with 8-inch diameter PVC pipe, and the installation of 24-inch diameter PVC pipe, appurtenances, and related piping, to provide transmission redundancy and resiliency to the existing 12-inch diameter AC transmission line. Within the District's service area, the existing 8-inch AC pipe is a *water distribution line* and the existing 12-inch AC pipe is a *water transmission line*; herein also referred to as *distribution main* and *transmission main*, respectively, per the District's Standard Specifications. The replacement of water distribution lines and installation of water transmission lines is necessary due to the existing materials reaching the end of their useful life, the maintainability of the existing transmission line routed between resident's parcels, the current and future water demand, and the impact to capacity from other water supply sources (i.e., joint water storage with Fountain Valley Authority at the Goldfield Tank Farm).

The replacement of the existing 8-inch AC pipe includes installing approximately 4,340 LF of 8-inch PVC water distribution main, interconnecting with existing water distribution pressure zones, performing necessary adjustments and replacements of water and sanitary sewer service lines, and performing the necessary recovery and improvements of disturbed infrastructure. Additionally, five (5) existing Fire Hydrants will be replaced, and two (2) new Fire Hydrants will be added to the 4,340 LF of 8-inch PVC water distribution main on Metropolitan Street, between Booster 2 Pump Station (herein also referred to as "Booster Station #2") and Ketchum Drive.

The installation of the UW2E water transmission line is approximately 13,200 LF of 24-inch diameter PVC piping and appurtenances. The UW2E water transmission line will be located within WWSD service areas, the right-of-way and obtained easements, the Booster 2 Pump Station, and the Goldfield

WWSD UW2E Water Transmission Line
Letter of Intent

Tank Farm. Related replacements and interconnections will include approximately 2,000 LF of 6-inch through 24-inch diameter piping, service yard and tank farm piping and appurtenances, and consist of the necessary adjustments and replacements of water and sanitary sewer service lines. The scope will also include performing the necessary recovery and improvements of disturbed infrastructure and restoring a private trail within obtained easements for the UW2E transmission line, allowing for private use and the District's access for maintaining the UW2E transmission line. Additionally, eight (8) new Fire Hydrants will be added to the 13,200 LF of the 24-inch PVC water transmission line.

Proposed Project Sites and Locations Descriptions

The proposed project sites are located along the alignment of the UW2E water transmission line and 8-inch water distribution main, including Booster 2 Pump Station (herein also referred to as "Booster Station #2") and the Goldfield Tank Farm (refer to Figure 1 and Figure 2 below, and attachments included with this letter).

The westernmost project site location is at Booster 2 Pump Station, located northwest of the intersection of Metropolitan Street and Kipling Street in Colorado Springs, Colorado, in Section 19, Township 15 South, Range 65 West of the 6th Principle Meridian, specifically 7010 Metropolitan Street, **Parcel #5519412028**. This project site includes the adjacent northern parcel that is noted as Tract D from Plat No. 3446 – Widefield Country Club Heights East, bounded on the west by the FMIC ditch, **Parcel #5519109008**. Zoning for both parcels is listed as RS-5000, CAD-O.

The proposed project sites along the UW2E water transmission line alignment and 8-inch water distribution main include: the right-of-way on Metropolitan Street; the easements for open-cut and trenchless crossing of Crews Gulch Regional Trail and Fountain Mutual Irrigation Canal (FMIC) Canal; the easements for open-cut installation just southwest of the intersection of Metropolitan Street and Fontaine Boulevard on **Parcel #5519100004**; the right-of-way trenchless crossing of Fontaine Boulevard at the intersection of Metropolitan Street and Fontaine Boulevard; the easements of Fountain Valley Schools for open-cut installation just north of Fontaine Boulevard on **Parcel #5500000164**; the right-of-way trenchless crossing of Fontaine Boulevard and Goldfield Drive at the intersection of Fontaine Boulevard and Goldfield Drive; the right-of-way on Goldfield Drive; the right-of-way on River Bend Road; the right-of-way on Buffalo Creek Trail; the right-of-way on Grand Valley Drive; the right-of-way on Corn Tassle Drive; the right-of-way on Sunny View Lane; and, the right-of-way on Goldfield Drive.

The eastern project site location is at the Goldfield Tank Farm, located at the southeast corner of the intersection of Goldfield Drive and Sunny View Lane in Colorado Springs, Colorado, in Section 20, Township 15 South, Range 65 West of the 6th Principle Meridian, specifically 7545 Sunny View Lane, **Parcel #5520119002**. The project site includes the adjacent parcel just southeast, specifically at 7105 Goldfield Drive, **Parcel #5520400001**. Zoning for both parcels is listed as RS-6000, CAD-O.

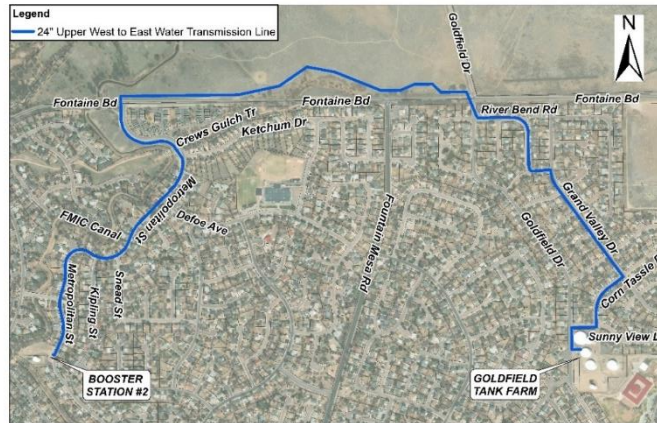


Figure 1 – Project Map: 24” Upper West to East Water Transmission Line Installation



Figure 2 – Project Map: 8" Water Distribution Main Replacement on Metropolitan Street

If you have any questions or comments, please contact us by phone or email.

Sincerely,


Rick Huggins, PE, PhD
Senior Project Manager
GARVER
RGHuggins@GarverUSA.com


Austin Chavez, EIT
Project Manager
GARVER
AJChavez@GarverUSA.com

Enclosures:

- Upper West to East Transmission Line Exhibit (1 page)
- 8-inch Water Distribution Main Replacement on Metropolitan Street Exhibit (1 page)

Enclosure

Upper West to East Transmission Line Exhibit

8-inch Water Distribution Main Replacement on Metropolitan Street Exhibit

