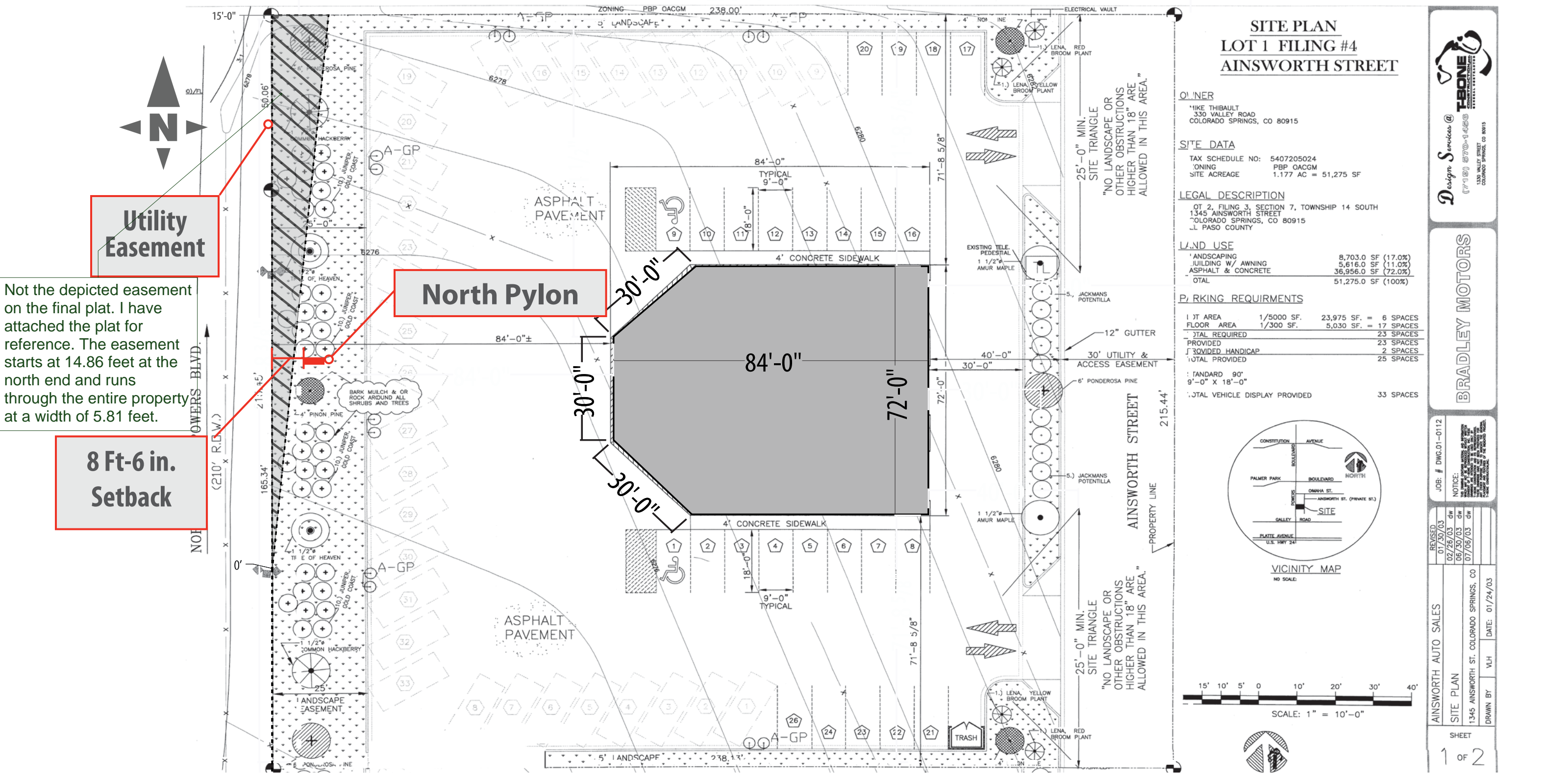


1345 AINSWORTH ST.



CORPORATE IDENTIFICATION SOLUTIONS

CUSTOMER
JD Byrider

SITE NUMBER
N/A

LOCATION
Colorado Springs, CO

ACCOUNT REP
Ben DeHayes

DRAWN BY
JR

DATE
09/28/18

REVISION
03

SCALE
NTS

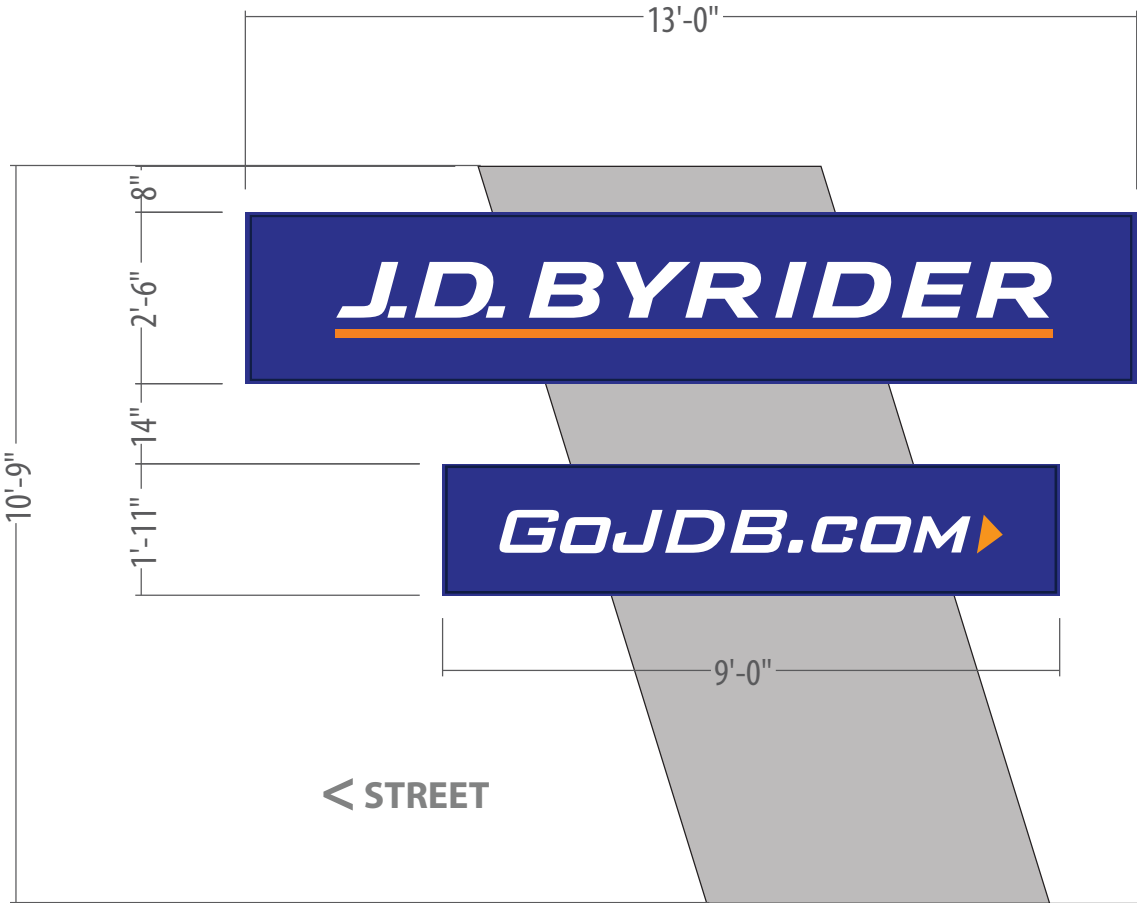
CORPORATE ID SOLUTIONS
5563 N Elston Ave.
Chicago, IL 60630
P: 773-763-9600 | F: 773-763-9606
www.CorporateIDSolutions.com

CUSTOMER ACCEPTANCE

THIS DRAWING IS THE PROPERTY OF CORPORATE IDENTIFICATION SOLUTIONS, INC. CHICAGO, ILLINOIS, AND CONTAINS PROPRIETARY AND CONFIDENTIAL INFORMATION. THIS DRAWING IS TRANSFERRED TO THE CUSTOMERS AND SUPPLIERS OF CORPORATE IDENTIFICATION SOLUTIONS, INC. BY WAY OF LOAN. THIS DRAWING MAY NOT BE COPIED OR REPRODUCED, IN WHOLE OR IN PART, NOR MAY IT OR THE INFORMATION IT CONTAINS BE DISCLOSED OR TRANSFERRED TO ANY OTHER PARTY OR PERSONS WITHOUT THE PRIOR WRITTEN CONSENT OF CORPORATE IDENTIFICATION SOLUTIONS, INC.

SIGNATURE _____ **DATE** _____

NORTH PYLON



ELEVATION A



49.75 SQ FT

ELEVATION B

VERIFY IN FIELD PRIOR TO MANUFACTURE



CORPORATE
IDENTIFICATION
SOLUTIONS

CUSTOMER	JD Byrider
SITE NUMBER	N/A

LOCATION	Colorado Springs, CO
ACCOUNT REP	Ben DeHayes

DRAWN BY	JR
DATE	09/28/18

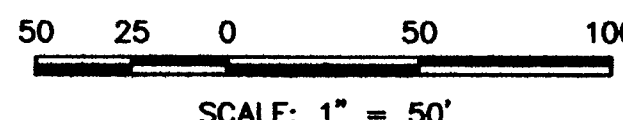
REVISION	03
SCALE	NTS

CORPORATE ID SOLUTIONS
5563 N Elston Ave.
Chicago, IL 60630
P: 773-763-9600 F: 773-763-9606
www.CorporateIDSolutions.com

CUSTOMER ACCEPTANCE	
THIS DRAWING IS THE PROPERTY OF CORPORATE IDENTIFICATION SOLUTIONS, INC. CHICAGO, ILLINOIS, AND CONTAINS PROPRIETARY AND CONFIDENTIAL INFORMATION. THIS DRAWING IS TRANSFERRED TO THE CUSTOMERS AND SUPPLIERS OF CORPORATE IDENTIFICATION SOLUTIONS, INC BY WAY OF LOAN. THIS DRAWING MAY NOT BE COPIED OR REPRODUCED, IN WHOLE OR IN PART, NOR MAY IT OR THE INFORMATION IT CONTAINS BE DISCLOSED OR TRANSFERRED TO ANY OTHER PARTY OR PERSONS WITHOUT THE PRIOR WRITTEN CONSENT OF CORPORATE IDENTIFICATION SOLUTIONS, INC.	
SIGNATURE	DATE

11589

SHEET 2 OF 2



AS RE-PLATTED

REVISIONS		DATE	BY:	DATE OF PREPARATION:	7/29/03
				SCALE:	1"=50'
				SHEET 2 OF 2	