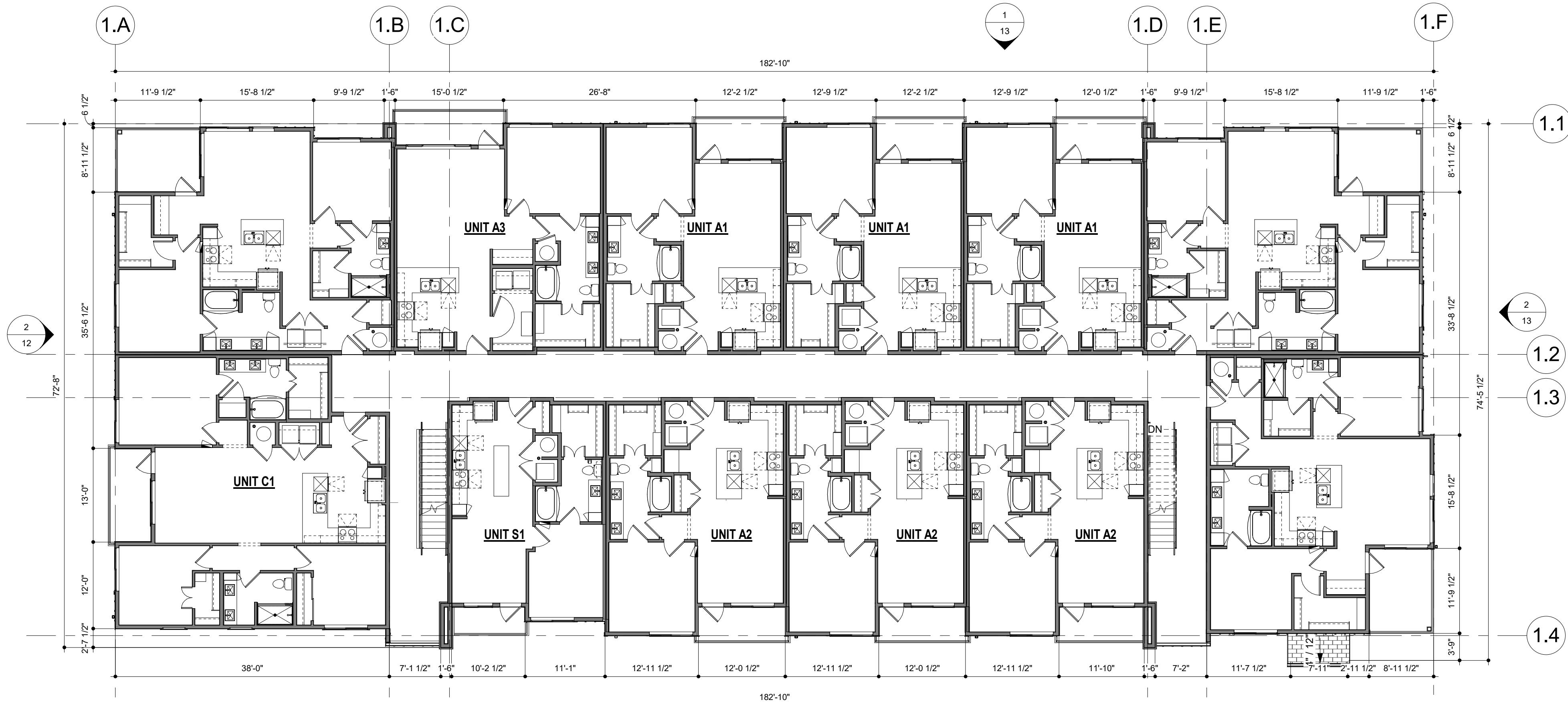


AURA AT CROSSROADS
SITE DEVELOPMENT PLAN

SITUATED IN THE SOUTHWEST 1/4 OF SECTION 8, TOWNSHIP 14 SOUTH, RANGE 65
WEST OF THE 6TH P.M., COUNTY OF EL PASO, STATE OF COLORADO

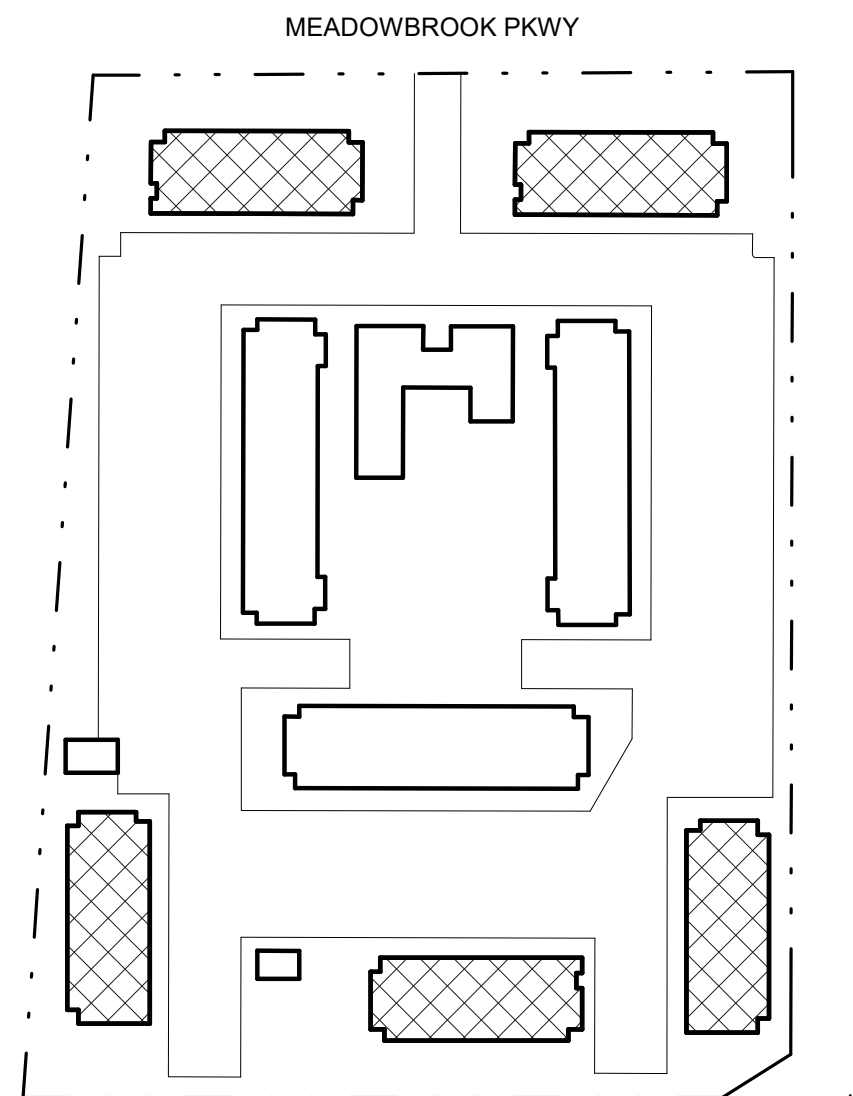


2 BUILDING TYPE A - SECOND/THIRD FLOOR COMPOSITE PLAN
3/32" = 1'-0"



1 BUILDING TYPE A - FIRST FLOOR COMPOSITE PLAN
3/32" = 1'-0"

MATERIAL LEGEND	
	FIBER CEMENT LAP SIDING - HARDI GRAY SLATE
	FIBER CEMENT B&B SIDING - HARDI IRON GRAY
	ADHERED STONE VENEER - SUNSET STONE CAPE COD
	ASPHALT SHINGLES - GEORGETOWN GRAY
	STANDING SEAM - SHAKE GRAY
	CEMENTITIOUS TRIM - HARDI GRAY SLATE
	CEMENTITIOUS TRIM - HARDI IRON GRAY
	METAL RAILING - HARDI GRAY SLATE
	CEMENTITIOUS HORIZONTAL RAILING - WOODTONE SAND CASTLE
	CMU - GRAY SLATE



SITE PLAN

36-PLEX -
COMPOSITE PLANS

TRINISIC RESIDENTIAL GROUP
1801 WEWATTA STREET, FLOOR 11
DENVER, CO 80202
P: 970.819.9968

SHEET 5 OF 29

AURA AT CROSSROADS

ISSUE DATE: 08-06-2021	PROJECT #: 220083
DATE	REVISION COMMENTS



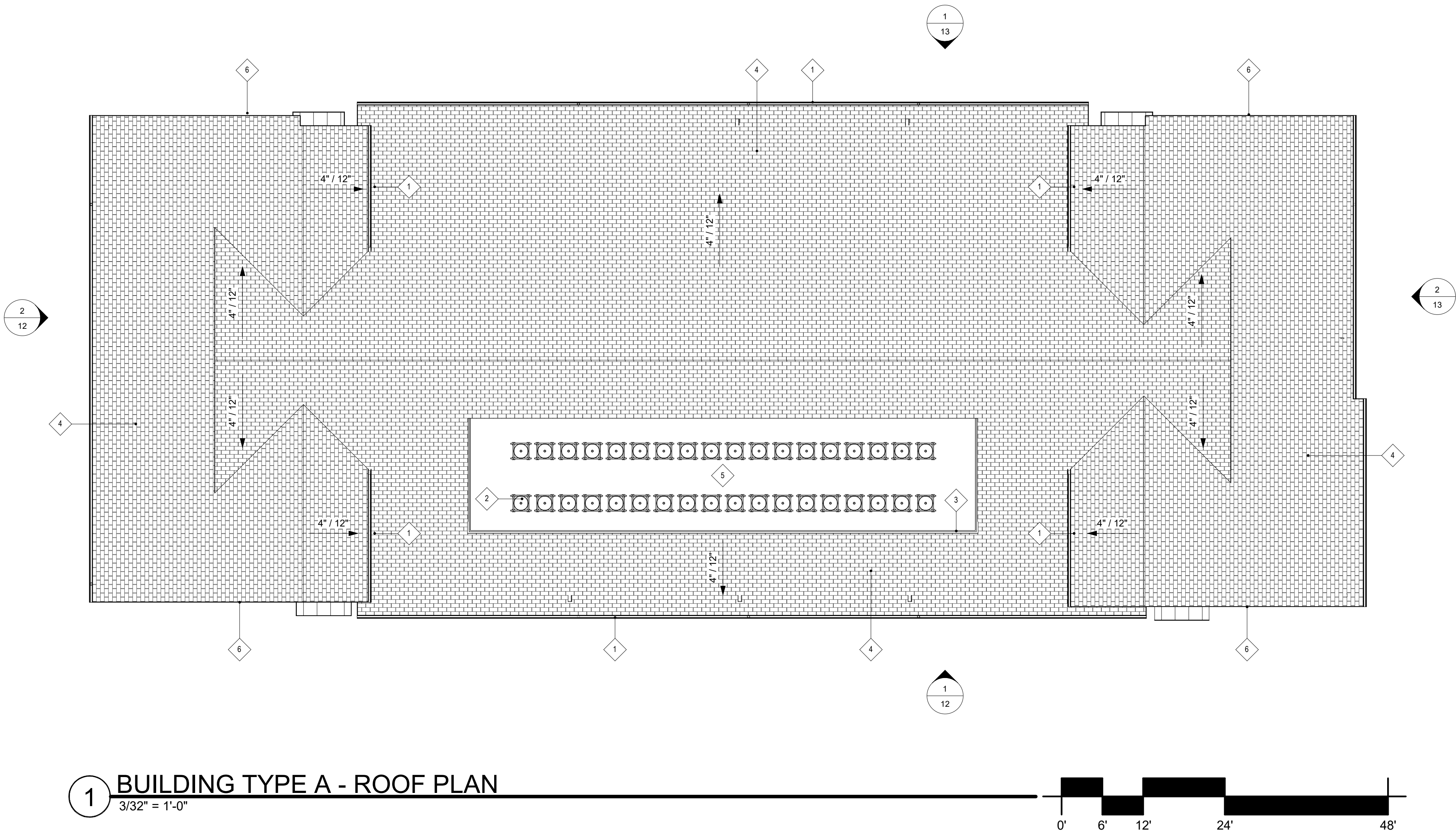
AURA AT CROSSROADS

SITE DEVELOPMENT PLAN

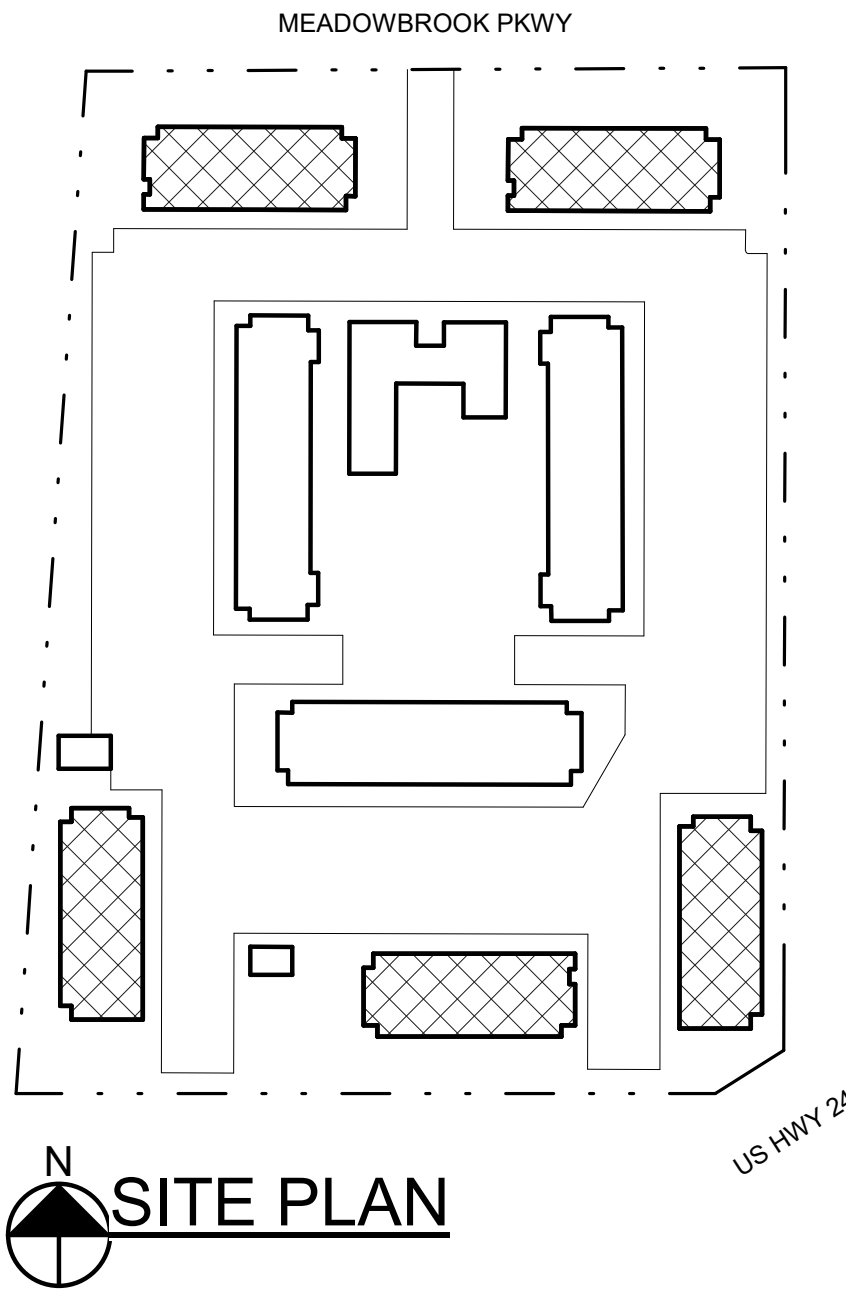
SITUATED IN THE SOUTHWEST 1/4 OF SECTION 8, TOWNSHIP 14 SOUTH, RANGE 65
WEST OF THE 6TH P.M., COUNTY OF EL PASO, STATE OF COLORADO

MATERIAL LEGEND	
	FIBER CEMENT LAP SIDING - HARDI GRAY SLATE
	FIBER CEMENT B&B SIDING - HARDI IRON GRAY
	ADHERED STONE VENEER - SUNSET STONE CAPE COD
	ASPHALT SHINGLES - GEORGETOWN GRAY
	STANDING SEAM - SHAKE GRAY
	CEMENTITIOUS TRIM - HARDI GRAY SLATE
	CEMENTITIOUS TRIM - HARDI IRON GRAY
	METAL RAILING - HARDI GRAY SLATE
	CEMENTITIOUS HORIZONTAL RAILING - WOODTONE SAND CASTLE
	CMU - GRAY SLATE

KEYNOTES	
NO.	NOTE
1	METAL GUTTER
2	MECHANICAL EQUIPMENT
3	CEMENTITIOUS HORIZONTAL RAILING - WOODTONE SAND CASTLE
4	ASPHALT SHINGLE ROOF - GEORGETOWN GREY
5	TPO LOW SLOPED ROOFING MEMBRANE
6	CEMENTITIOUS FASCIA - HARDI IRON GRAY



1 BUILDING TYPE A - ROOF PLAN
3/32" = 1'-0"



SITE PLAN

36-PLEX - ROOF PLAN

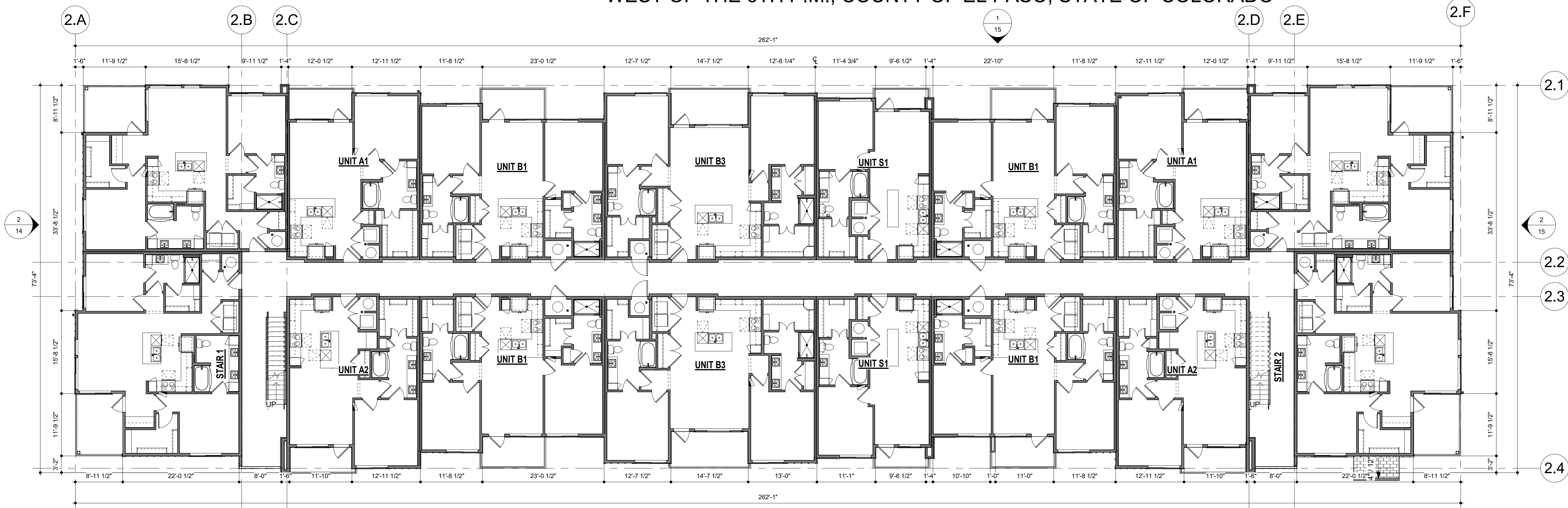
ISSUE DATE: 08-06-2021	PROJECT #: 220083
DATE	REVISION COMMENTS



TRINSIC RESIDENTIAL GROUP
1801 WEWATTA STREET, FLOOR 11
DENVER, CO 80202
P: 970.819.9968

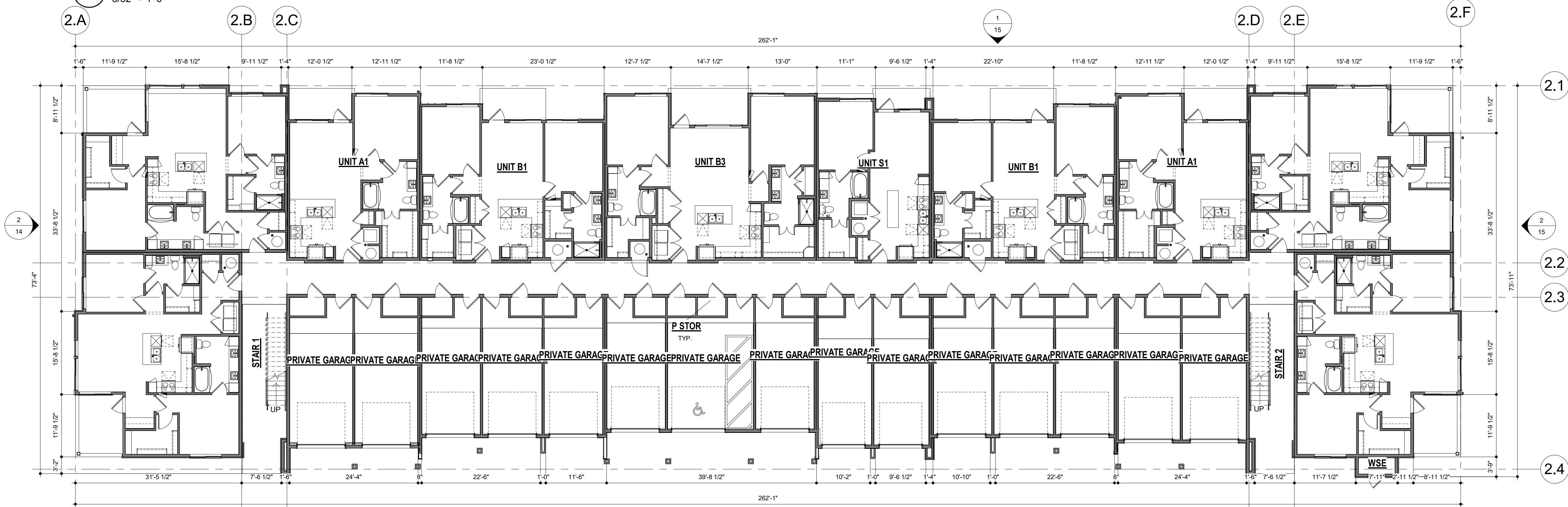
AURA AT CROSSROADS
SITE DEVELOPMENT PLAN

SITUATED IN THE SOUTHWEST 1/4 OF SECTION 8, TOWNSHIP 14 SOUTH, RANGE 65
WEST OF THE 6TH P.M., COUNTY OF EL PASO, STATE OF COLORADO

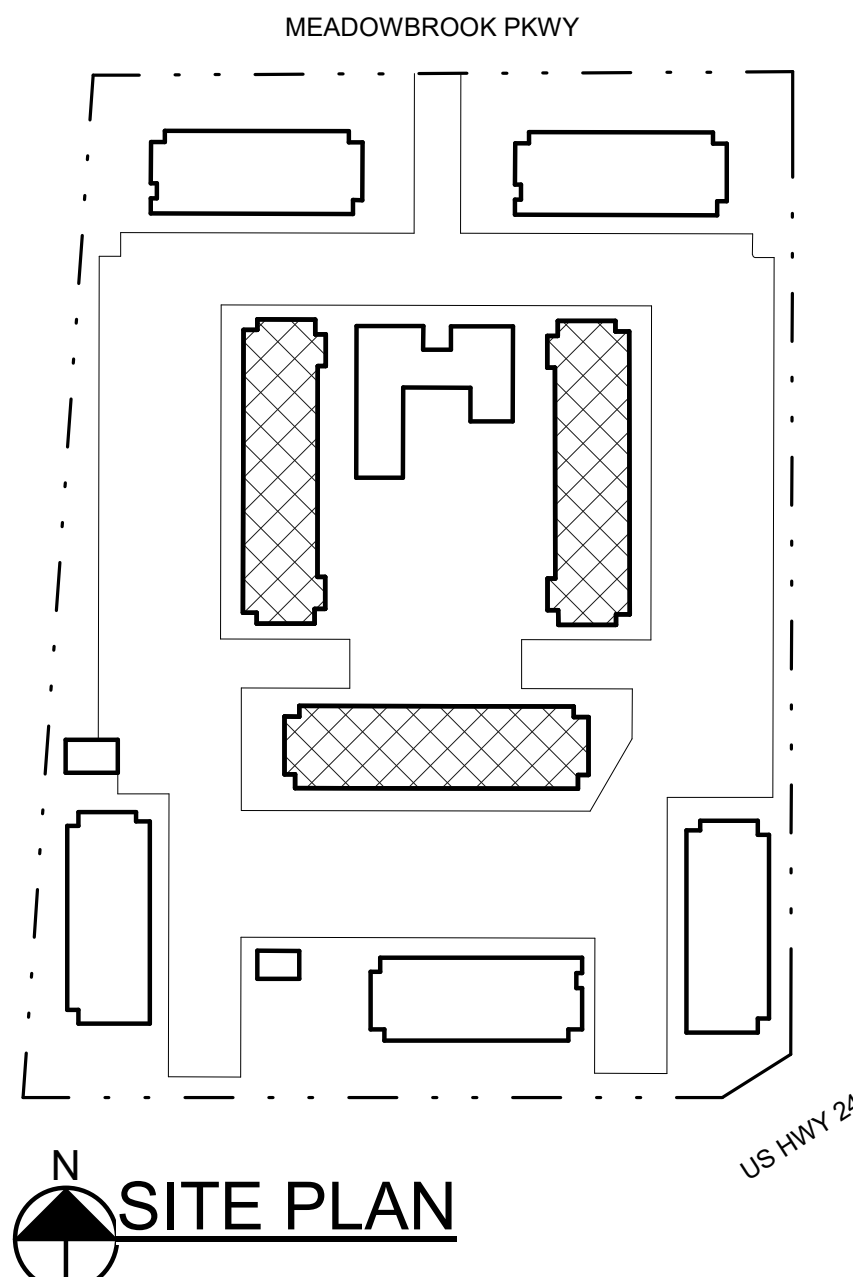


MATERIAL LEGEND	
	FIBER CEMENT LAP SIDING - HARDI GRAY SLATE
	FIBER CEMENT B&B SIDING - HARDI IRON GRAY
	ADHERED STONE VENEER - SUNSET STONE CAPE COD
	ASPHALT SHINGLES - GEORGETOWN GRAY
	STANDING SEAM - SHAKE GRAY
	CEMENTITIOUS TRIM - HARDI GRAY SLATE
	CEMENTITIOUS TRIM - HARDI IRON GRAY
	METAL RAILING - HARDI GRAY SLATE
	CEMENTITIOUS HORIZONTAL RAILING - WOODTONE SAND CASTLE
	CMU - GRAY SLATE

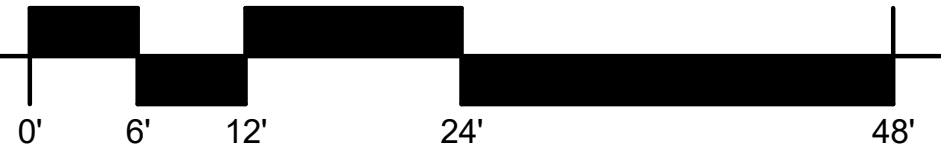
2 BUILDING TYPE B - SECOND/THIRD FLOOR COMPOSITE PLAN
3/32" = 1'-0"



1 BUILDING TYPE B - FIRST FLOOR COMPOSITE PLAN
3/32" = 1'-0"



ISSUE DATE: 08-06-2021	PROJECT #: 220083
DATE	REVISION COMMENTS



TRINISIC RESIDENTIAL GROUP
1801 WEWATTA STREET, FLOOR 11
DENVER, CO 80202
P: 970.819.9968

42-PLEX -
COMPOSITE PLANS

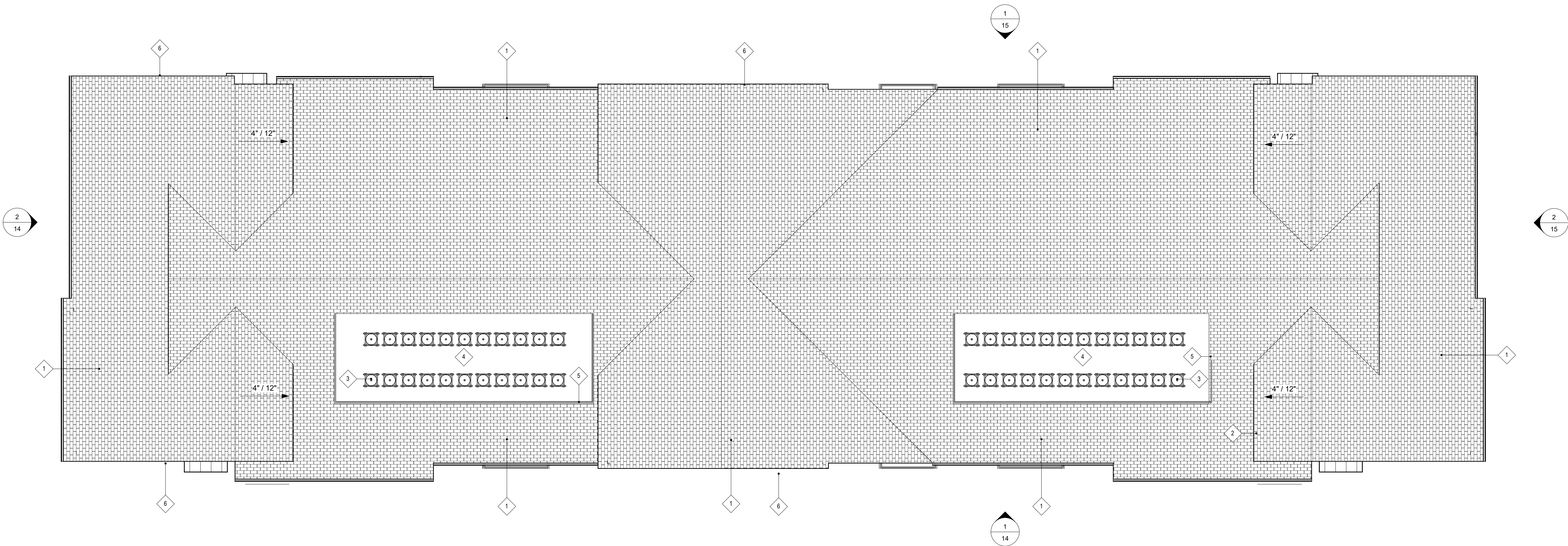
AURA AT CROSSROADS

SITE DEVELOPMENT PLAN

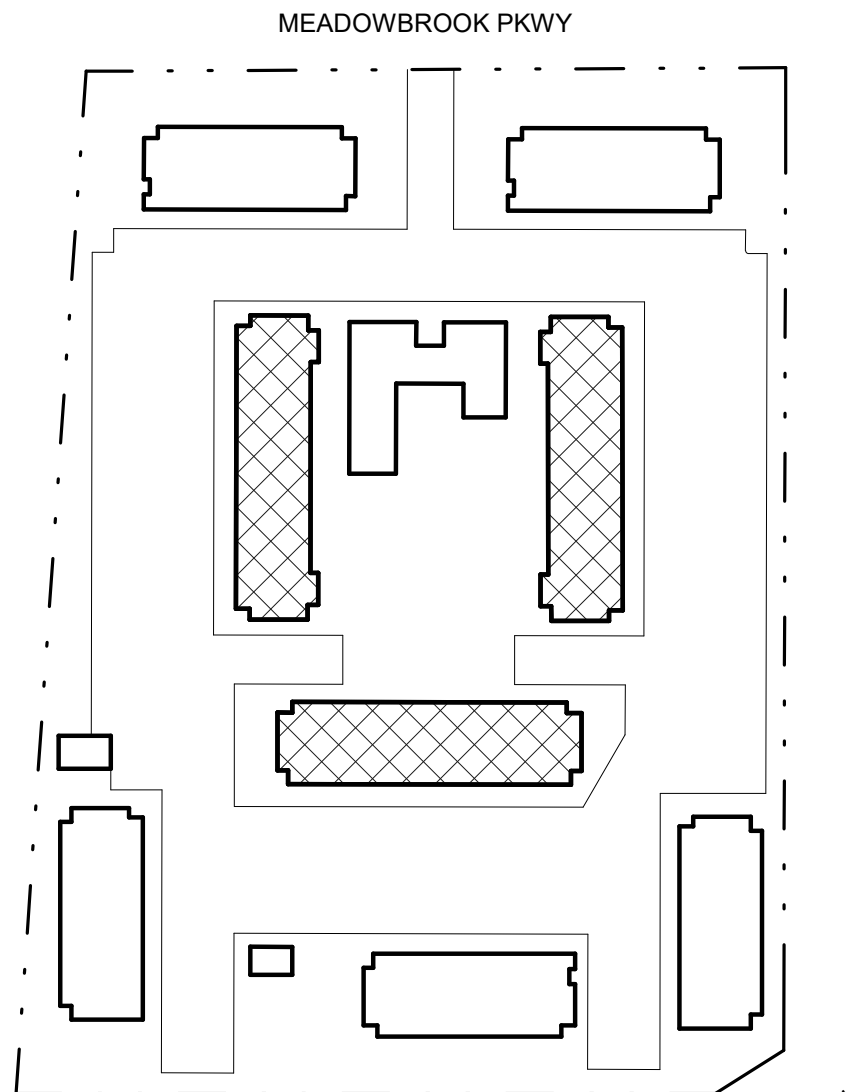
SITUATED IN THE SOUTHWEST 1/4 OF SECTION 8, TOWNSHIP 14 SOUTH, RANGE 65
WEST OF THE 6TH P.M., COUNTY OF EL PASO, STATE OF COLORADO

MATERIAL LEGEND	
	FIBER CEMENT LAP SIDING - HARDI GRAY SLATE
	FIBER CEMENT B&B SIDING - HARDI IRON GRAY
	ADHERED STONE VENEER - SUNSET STONE CAPE COD
	ASPHALT SHINGLES - GEORGETOWN GRAY
	STANDING SEAM - SHAKE GRAY
	CEMENTITIOUS TRIM - HARDI GRAY SLATE
	CEMENTITIOUS TRIM - HARDI IRON GRAY
	METAL RAILING - HARDI GRAY SLATE
	CEMENTITIOUS HORIZONTAL RAILING - WOODTONE SAND CASTLE
	CMU - GRAY SLATE

KEYNOTES	
NO.	NOTE
1	ASPHALT SHINGLE ROOF - GEORGETOWN GREY
2	METAL GUTTER
3	MECHANICAL EQUIPMENT
4	TPO LOW SLOPED ROOFING MEMBRANE
5	CEMENTITIOUS HORIZONTAL RAILING - WOODTONE SAND CASTLE
6	CEMENTITIOUS FASCIA - HARDI IRON GRAY



1 BUILDING TYPE B - ROOF PLAN
3/32" = 1'-0"



N SITE PLAN

42-PLEX - ROOF PLAN

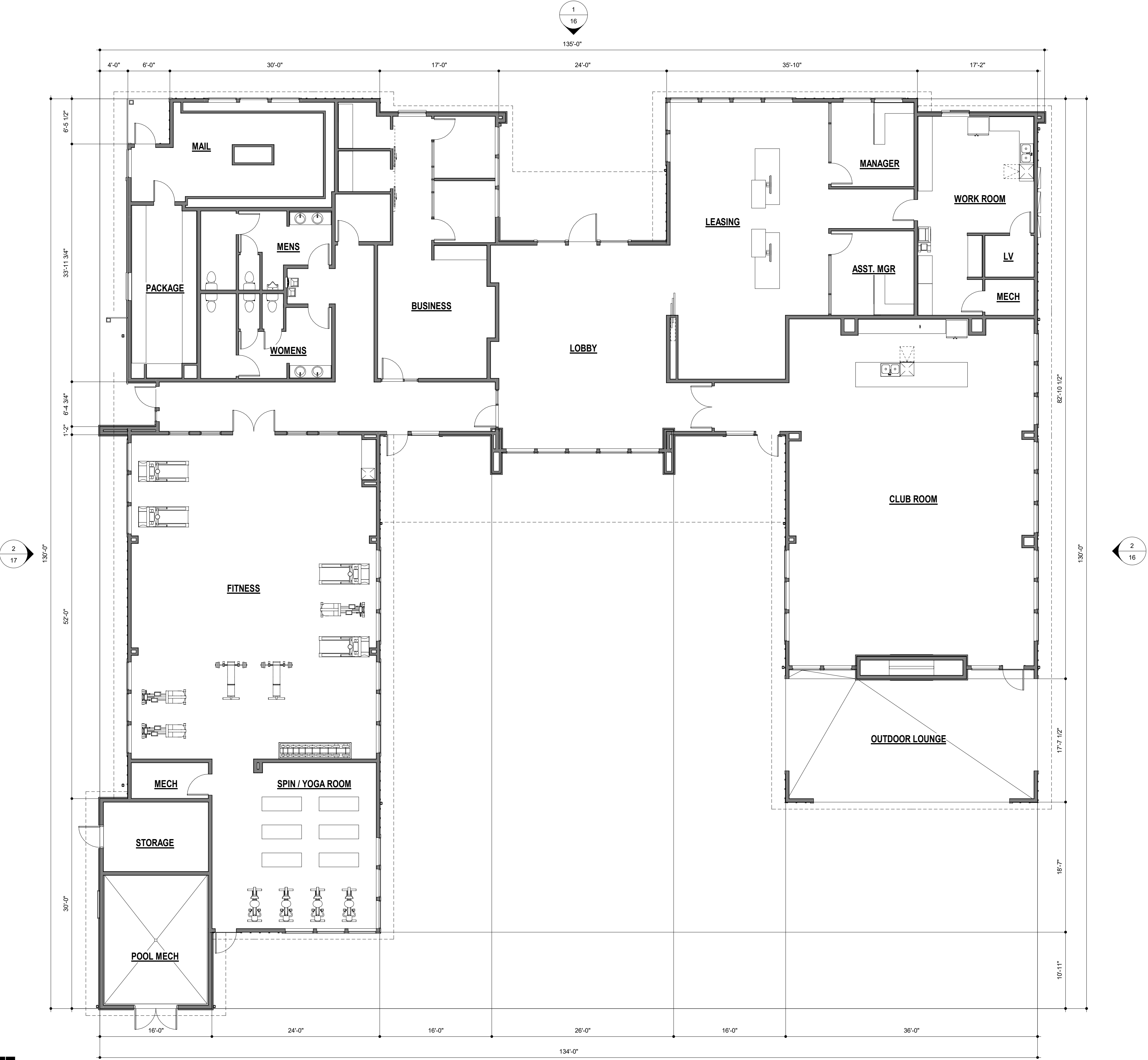
ISSUE DATE: 08-06-2021	PROJECT #: 220083
DATE	REVISION COMMENTS



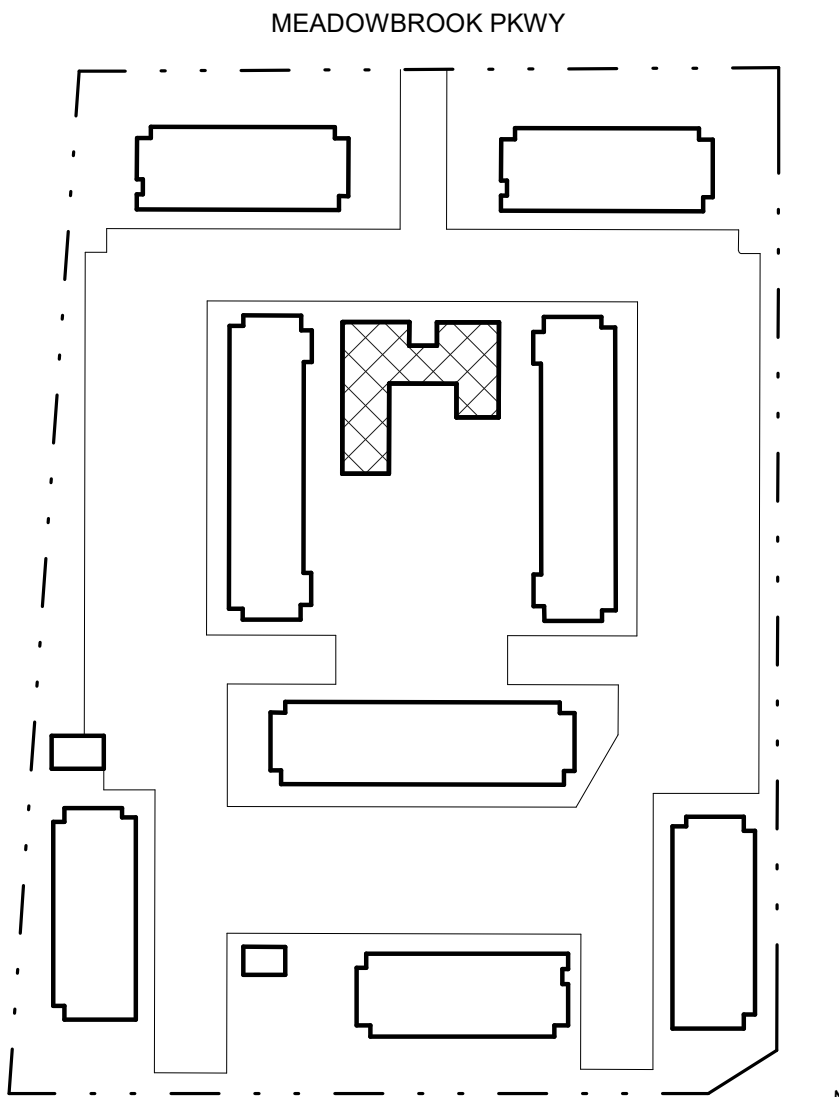
TRINSIC RESIDENTIAL GROUP
1801 WEWATTA STREET, FLOOR 11
DENVER, CO 80202
P: 970.819.9968

AURA AT CROSSROADS
SITE DEVELOPMENT PLAN

SITUATED IN THE SOUTHWEST 1/4 OF SECTION 8, TOWNSHIP 14 SOUTH, RANGE 65
WEST OF THE 6TH P.M., COUNTY OF EL PASO, STATE OF COLORADO



MATERIAL LEGEND	
	FIBER CEMENT LAP SIDING - HARDI GRAY SLATE
	FIBER CEMENT B&B SIDING - HARDI IRON GRAY
	ADHERED STONE VENEER - SUNSET STONE CAPE COD
	ASPHALT SHINGLES - GEORGETOWN GRAY
	STANDING SEAM - SHAKE GRAY
	CEMENTITIOUS TRIM - HARDI GRAY SLATE
	CEMENTITIOUS TRIM - HARDI IRON GRAY
	METAL RAILING - HARDI GRAY SLATE
	CEMENTITIOUS HORIZONTAL RAILING - WOODTONE SAND CASTLE
	CMU - GRAY SLATE



SITE PLAN

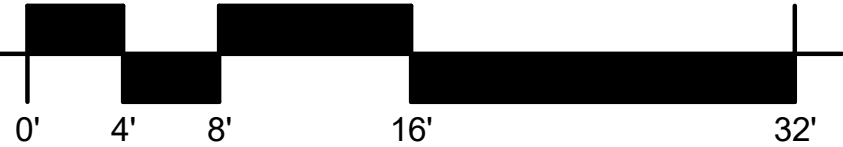
CLUBHOUSE - FLOOR PLAN

TRINISC RESIDENTIAL GROUP
1801 WEWATTA STREET, FLOOR 11
DENVER, CO 80202
P: 970.819.9968

ISSUE DATE: 08-06-2021		PROJECT #: 220083
DATE	REVISION COMMENTS	



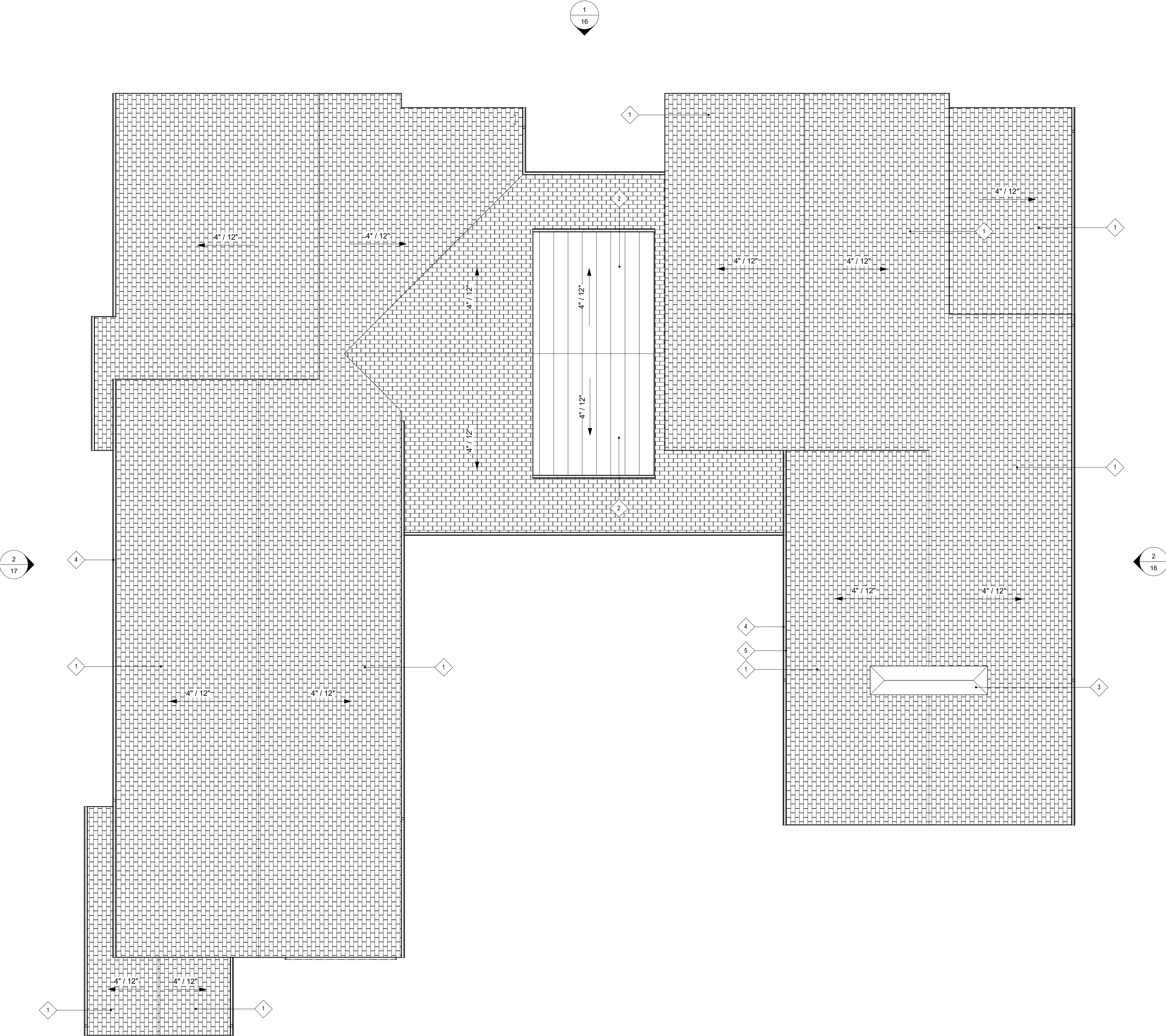
1 CLUBHOUSE/LEASING - FLOOR PLAN
1/8" = 1'-0"



AURA AT CROSSROADS

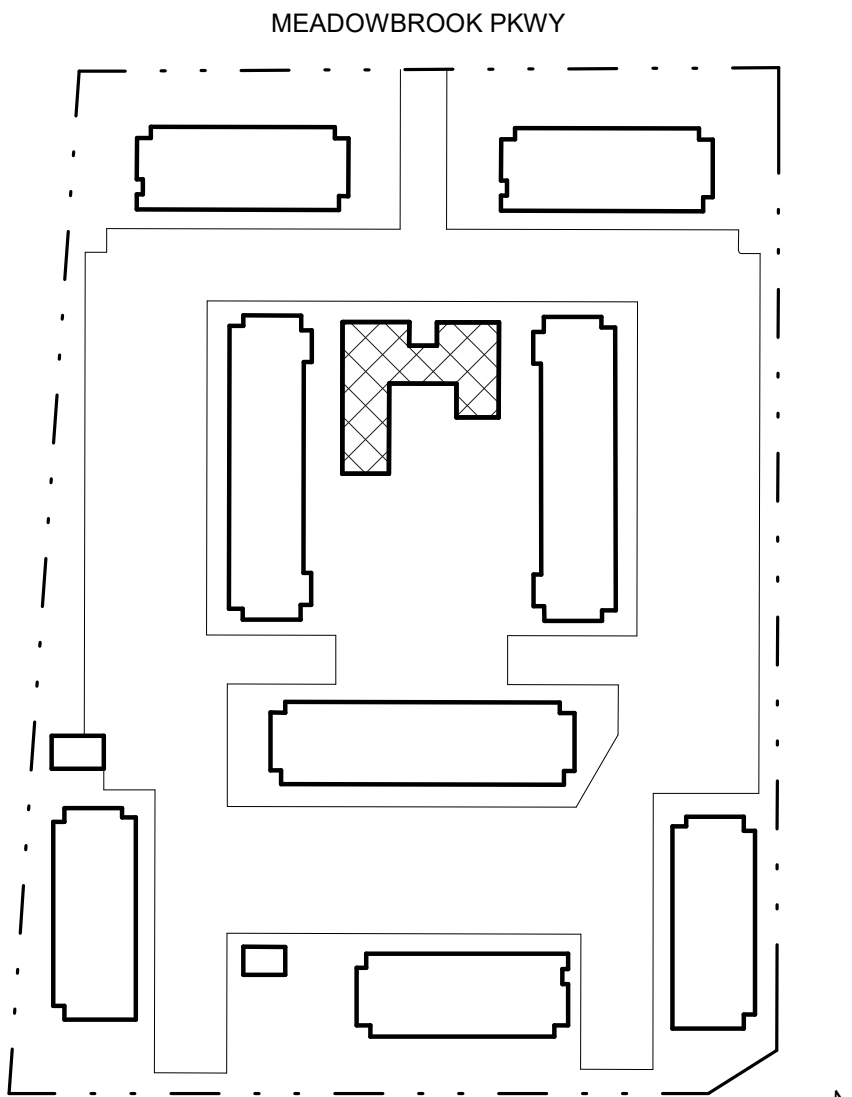
SITE DEVELOPMENT PLAN

SITUATED IN THE SOUTHWEST 1/4 OF SECTION 8, TOWNSHIP 14 SOUTH, RANGE 65
WEST OF THE 6TH P.M., COUNTY OF EL PASO, STATE OF COLORADO



MATERIAL LEGEND	
	FIBER CEMENT LAP SIDING - HARDI GRAY SLATE
	FIBER CEMENT B&B SIDING - HARDI IRON GRAY
	ADHERED STONE VENEER - SUNSET STONE CAPE COD
	ASPHALT SHINGLES - GEORGETOWN GRAY
	STANDING SEAM - SHAKE GRAY
	CEMENTITIOUS TRIM - HARDI GRAY SLATE
	CEMENTITIOUS TRIM - HARDI IRON GRAY
	METAL RAILING - HARDI GRAY SLATE
	CEMENTITIOUS HORIZONTAL RAILING - WOODTONE SAND CASTLE
	CMU - GRAY SLATE

KEYNOTES	
NO.	NOTE
1	ASPHALT SHINGLE ROOF - GEORGETOWN GREY
2	STANDING SEAM ROOF - SHAKE GRAY
3	PRECAST WALL CAP
4	METAL GUTTER
5	CEMENTITIOUS TRIM - HARDI IRON GRAY



SITE PLAN

CLUBHOUSE - ROOF PLAN

TRINSC RESIDENTIAL GROUP
1801 WEWATTA STREET, FLOOR 11
DENVER, CO 80202
P: 970.819.9968

ISSUE DATE: 08-06-2021	PROJECT #: 220083
DATE	REVISION COMMENTS



1 CLUBHOUSE/LEASING - ROOF PLAN
1/8" = 1'-0"

