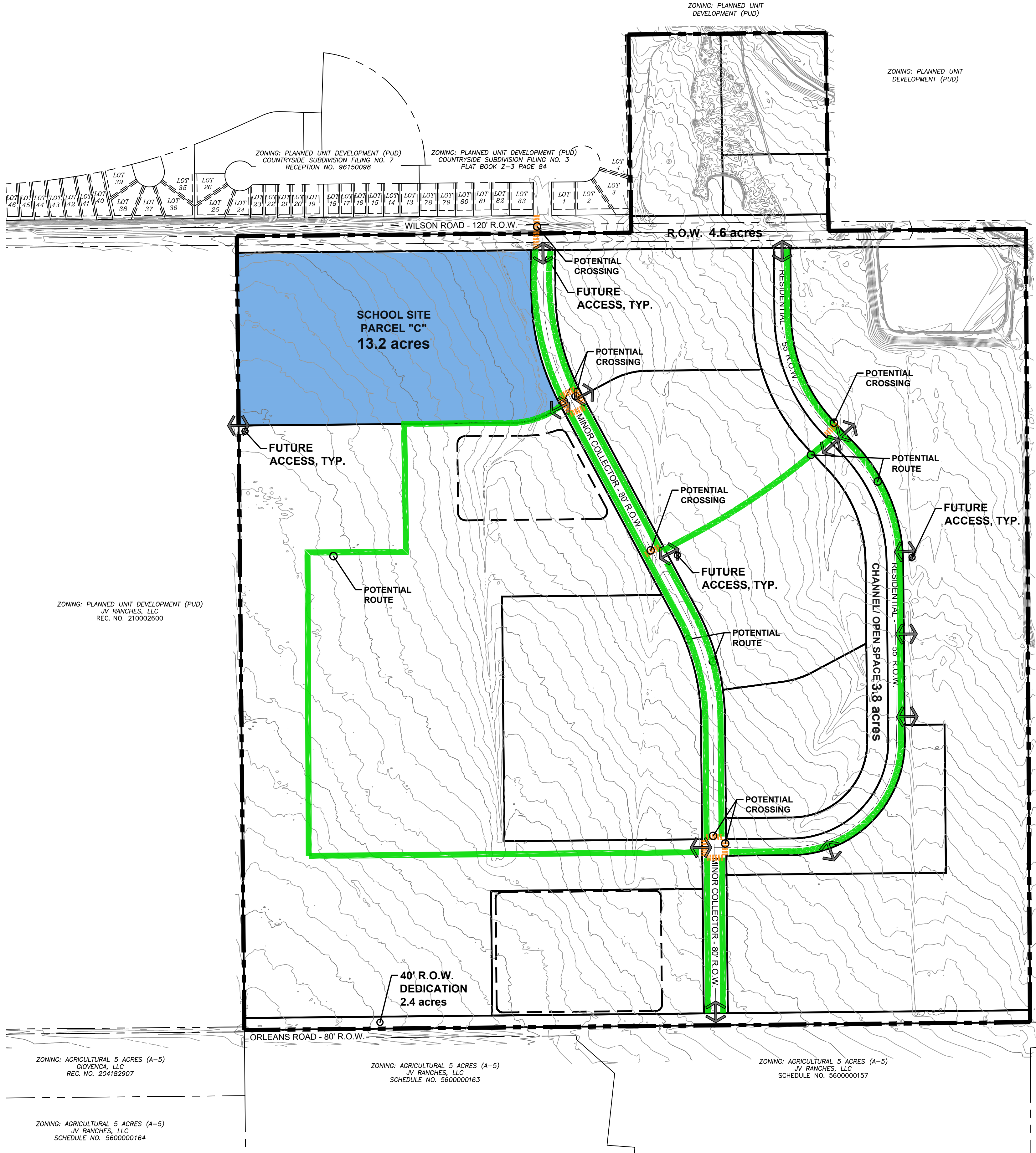


# COUNTRYSIDE SOUTH

## CITY OF FOUNTAIN

### SAFE ROUTES TO SCHOOL PLAN



**SAFE ROUTES TO SCHOOL ANALYSIS:**

1. THE COUNTRYSIDE SOUTH ODP IS PROPOSING A 13.2 AC SCHOOL SITE AS A PART OF THE DEVELOPMENT.
2. THE DEVELOPER WILL CONSTRUCT SIDEWALKS ALONG ALL SURROUNDING STREETS INCLUDING WILSON ROAD, THE MINOR COLLECTOR TO THE EAST, AND RESIDENTIAL COLLECTOR TO THE SOUTH.
3. INTERNAL SIDEWALKS AND TRAIL CONNECTIONS WILL BE PROVIDED AS REQUIRED WITH FUTURE MORE DETAILED LAND DEVELOPMENT APPLICATIONS.
4. PEDESTRIAN CROSSINGS AND TRAFFIC CONTROL MECHANISMS AS NEEDED.
5. THE SCHOOL SITE WILL ALSO BE USED BY THE EXISTING DEVELOPMENT TO THE NORTH, THEIR EXISTING SIDEWALK SYSTEM WILL CONNECT SEAMLESSLY INTO COUNTRYSIDE SOUTH PROVIDING THE NECESSARY SAFE ROUTES TO SCHOOL.

ZONING: RESIDENTIAL RURAL  
5 ACRES (RR-5)  
JV RANCHES, LLC  
REC. NO. 210002600

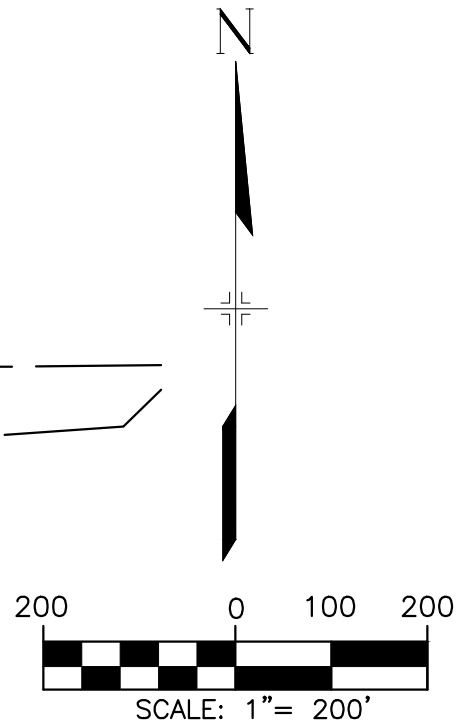
ZONING: PLANNED UNIT DEVELOPMENT (PUD)  
JV RANCHES, LLC  
REC. NO. 210002600

ZONING: AGRICULTURAL 5 ACRES (A-5)  
GIOVENCA, LLC  
REC. NO. 204182907

ZONING: AGRICULTURAL 5 ACRES (A-5)  
JV RANCHES, LLC  
SCHEDULE NO. 5600000163

ZONING: AGRICULTURAL 5 ACRES (A-5)  
JV RANCHES, LLC  
SCHEDULE NO. 5600000157

ZONING: AGRICULTURAL 5 ACRES (A-5)  
JV RANCHES, LLC  
SCHEDULE NO. 5600000164



COUNTRYSIDE SOUTH



2435 Research Parkway, Suite 300  
Colorado Springs, CO 80920  
Contact: ANDREA PAPIERSKI  
Phone (719) 575-0100 | Fax (719) 575-0208

S:\21.1208.002 Countryside South\100 Dwg\1104 Plan Sets\Concept Plan  
1208-Safe Routes to School

**SAFE ROUTES TO SCHOOL PLAN**

AUGUST 2021