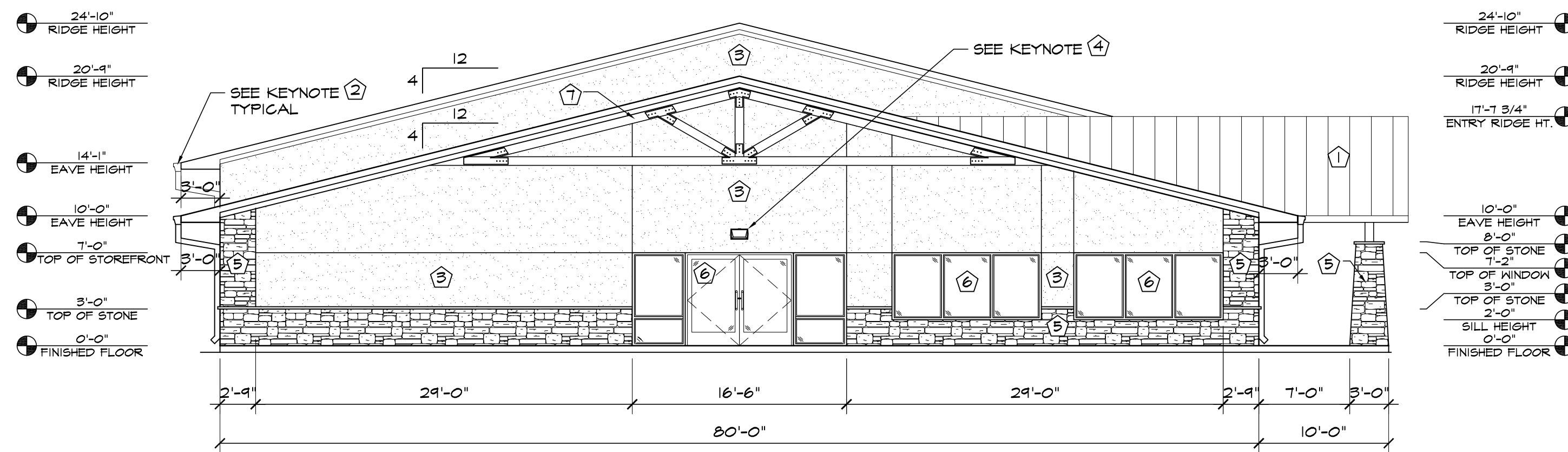
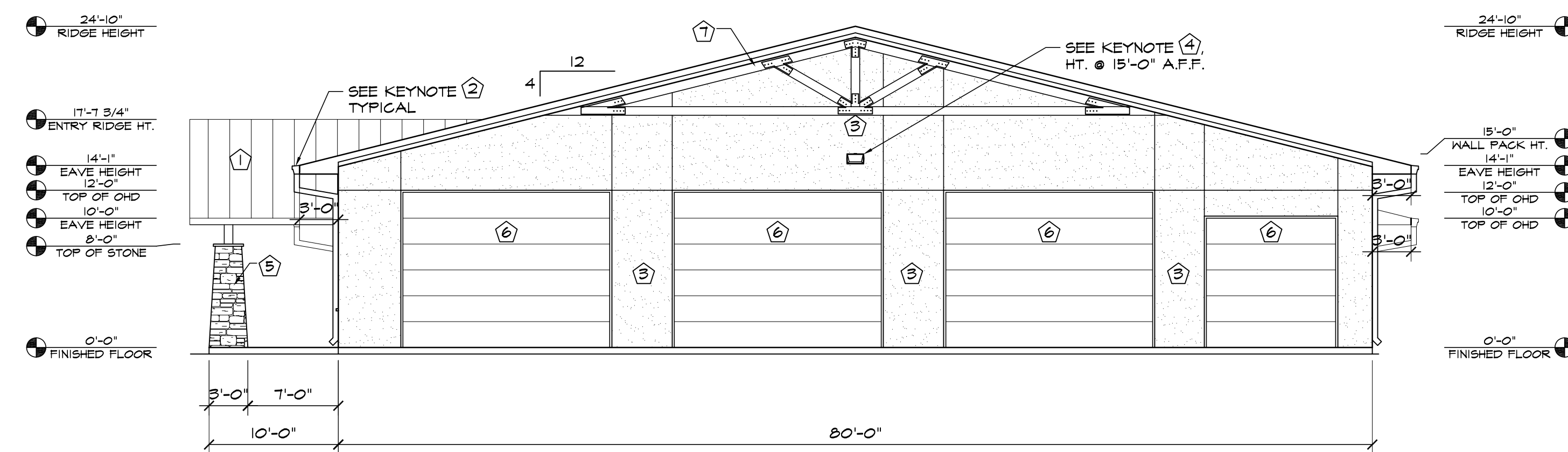


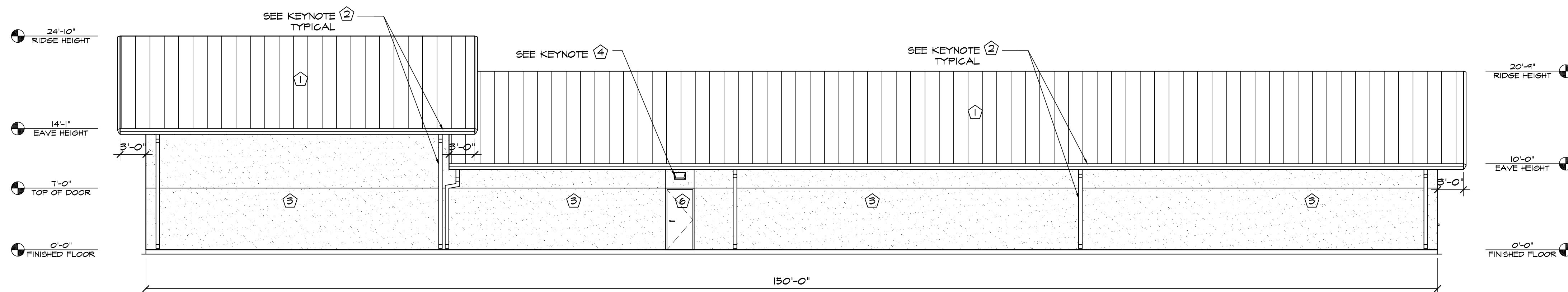
1 WEST ELEVATION
SCALE: 1/8"=1'-0"



2 NORTH ELEVATION
SCALE: 1/8"=1'-0"



3 SOUTH ELEVATION
SCALE: 1/8"=1'-0"



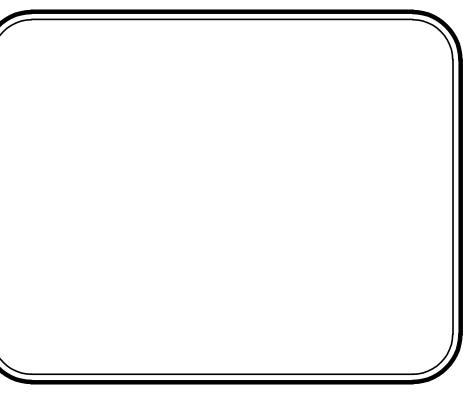
4 EAST ELEVATION
SCALE: 1/8"=1'-0"

ELEVATION KEY NOTES	
1	PREFINISHED STANDING SEAM ROOF BY METAL BUILDING PROVIDER
2	PREFINISHED GUTTER & DOWNSPOUTS BY METAL BUILDING PROVIDER
3	3/4" STUCCO FINISH SYS. W/ EXPANSION JOINT-120 SF MAX AREA
4	WALL PACK LIGHT TOP OF LIGHT @ 9'-0" A.F.F. SEE ELECT. PLANS, U.N.O.
5	STONE VENEER W/ 2" CAP INSTALLED W/ SCHLUTER TRIM
6	SEE SCHEDULES ON "A" SHEETS FOR ALL DOOR INFORMATION
7	DECORATIVE TIMBER TRUSS, SEE SHEET S2.2 FOR FURTHER FRAMING DETAILS

HAMMERS CONSTRUCTION INC.
COMMERCIAL GENERAL CONTRACTORS SPECIALIZING IN DESIGN/BUILD
PRESIDENT: STEVE R. HAMMERS
VICE PRES: DAVID J. HAMMERS
1411 WOODLEY HEIGHTS
COLORADO SPRINGS, CO 80915
(719) 570-1589 FAX (719) 570-7008
www.hammersconstruction.com

THIS DRAWING CONTAINS MATERIAL & INFORMATION WHICH MAY NOT BE REPRODUCED WITHOUT WRITTEN CONSENT OF HAMMERS CONSTRUCTION INC. THESE DRAWINGS ARE INTENDED TO BE USED ONLY BY HAMMERS CONSTRUCTION & ITS REPRESENTATIVES. THESE DRAWINGS HAVE NOT BEEN PREPARED FOR ANY OTHER PURPOSE THAN TO INDICATE THE GENERAL FEATURES AND PLACEMENT OF THE PROPOSED PROJECT. COPYRIGHT © 2022 HAMMERS CONSTRUCTION

STRUTHERS-POLARIS RMC
NEW BUILD
847 STRUTHERS RANCH RD.
COLORADO SPRINGS, CO 80921
EL PASO COUNTY, COLORADO



DATE: DEC. 6, 2022
DRAWN BY: A. MADALONE
PROJ. MGR: R. MAXWELL
SCALE: SEE PLAN
APPROVED BY:
JOB NO: 1293

REVISIONS:	
Δ	11-22-22/COMMENTS 4-20-22
Δ	
Δ	
Δ	
Δ	